

REV	DESCRIPTION	BY	DATE APPROVED
XA	RELEASE FOR PROTOTYPE	RLK	01/30/02
XB	ADD 1900 FCC ID: MTF052651	RLK	03/11/02



-01 (GSM-900/1800)




-02 (GSM-1900)

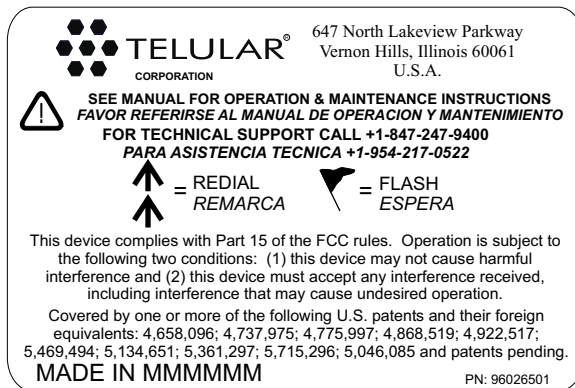
**NOTE:**

1. MATERIAL: 2" x 1" ADHESIVE-BACKED WHITE POLYESTER:  
ZEBRA #65598 (Z-ULTIMATE 3000 WHITE LABEL)  
ZEBRA #5095BK (06045 2.36" X 450 METER BLACK RESIN RIBBON)
2. TEXT FONTS, SIZE AND LOCATION SHALL BE APPROVED BY THE MARKETING DEPARTMENT PRIOR TO VOLUME PRODUCTION. ALL TEXT TO BE BLACK.
3. BARCODES TO BE CODE 128.
4. AAAAAAAAAAAAAAAAAA TO BE REPLACED WITH IMEI OF RADIO.
5. YYWWLTXXX TO COMPLY WITH TELULAR SPEC. 90006502.
6. DDDDDDDDDDDDDDDDD TO BE REPLACED WITH ONE OF THE FOLLOWING DESCRIPTIONS: a) GSM 900/1800 FWT  
b) GSM 900/1800 DP  
c) GSM 1900 FWT  
d) GSM 1900 DP

P/N 96027102 - GSM-1900  
P/N 96027101 - GSM-900/1800

 <b>TELULAR</b>			
APPROVED BY: <b>P. WOJCIK</b>	DES. ENG. N. Joslyn	DRAWN BY: <b>D. TOBIAS</b>	
	MFG. D. Krasowski		
	MECH. DESIG. D. Tobias		
TITLE: <b>LABEL, IMEI, GSM SX5</b>		DRAWING NUMBER: <b>96027100</b>	
DATE: <b>01/15/02</b>		SHT. <b>1</b> OF <b>1</b>	

REV	DESCRIPTION	BY	DATE APPROVED
-	RELEASED TO RECORDS; CD488	RLK	4/30/01




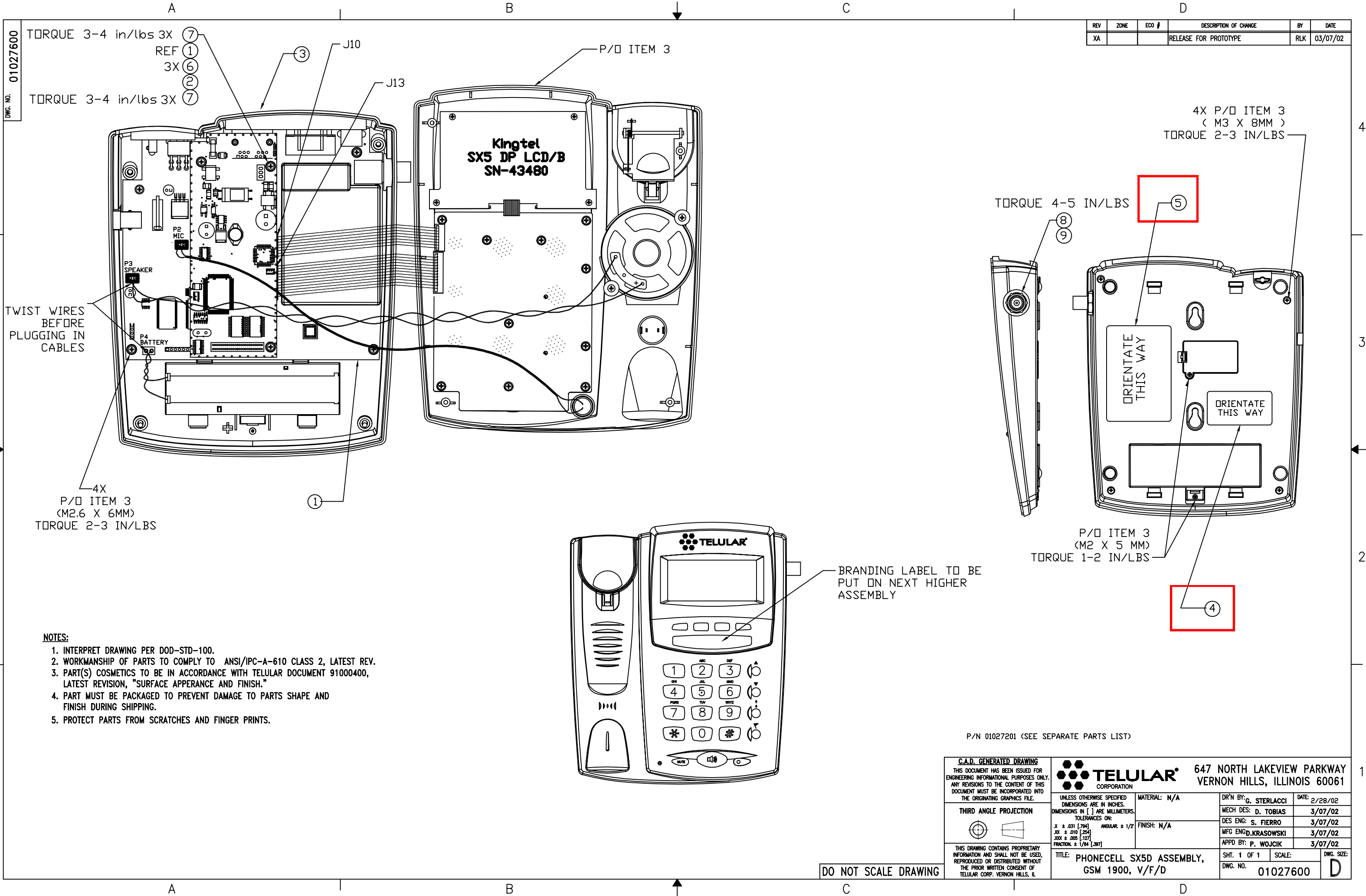
-01

**NOTE:**

1. MATERIAL: 2" x 3" ADHESIVE-BACKED WHITE POLYESTER OR APPROVED EQUIVALENT PER THE DURABILITY TEST OF 1.7.15 OF BS EN 60950: 1992 (BS 7002: 1992).
2. TEXT FONTS, SIZE AND LOCATION SHALL BE APPROVED BY THE MARKETING DEPARTMENT PRIOR TO VOLUME PRODUCTION.
3. COLOR: ALL TEXT AND SYMBOLS TO BE BLACK.
4. MMMMMM TO BE REPLACED WITH COUNTRY WHERE UNIT IS MANUFACTURED.

P/N 96026501

 <b>TELULAR</b>			
APPROVED BY: <b>RLK</b>	DES. ENG.	G. KNIGHT	DRAWN BY: <b>D. TOBIAS</b>
	MFG.	D. KRASOWSKI	
	MECH. DESIG.	D. TOBIAS	
TITLE: <b>LABEL, LOGO/PATENTS/FCC, ENGLISH/SPANISH</b>			DRAWING NUMBER: <b>96026500</b>
DATE: <b>04/23/01</b>			SHT. <b>1</b> OF <b>1</b>



REV	ZONE	ECO #	DESCRIPTION OF CHANGE	BY	DATE
XA			RELEASE FOR PROTOTYPE	RLK	03/07/02

<b>C.A.D. GENERATED DRAWING</b> THIS DOCUMENT HAS BEEN ISSUED FOR ENGINEERING INFORMATIONAL PURPOSES ONLY. ANY REVISIONS TO THE CONTENT OF THIS DOCUMENT MUST BE INCORPORATED INTO THE ORIGINATING GRAPHICS FILE.		<b>TELULAR CORPORATION</b> 647 NORTH LAKEVIEW PARKWAY VERNON HILLS, ILLINOIS 60061	
<b>THIRD ANGLE PROJECTION</b> 		UNLESS OTHERWISE SPECIFIED DIMENSIONS ARE IN INCHES. DIMENSIONS IN [ ] ARE MILLIMETERS. TOLERANCES ON: .X ± .031 [.784] .XX ± .010 [.254] .XXX ± .005 [.127] FRACTIONAL ± 1/64 [.397]	MATERIAL: N/A FINISH: N/A
THIS DRAWING CONTAINS PROPRIETARY INFORMATION AND SHALL NOT BE USED, REPRODUCED OR DISTRIBUTED WITHOUT THE PRIOR WRITTEN CONSENT OF TELULAR CORP. VERNON HILLS, IL		DR'N BY: G. STERLACCI MECH DES: D. TOBIAS DES ENG: S. FIERRO MFG ENG: D. KRASOWSKI APPD BY: P. WOJCIK	DATE: 2/28/02 3/07/02 3/07/02 3/07/02 3/07/02
TITLE: PHONECELL SX5D ASSEMBLY, GSM 1900, V/F/D		SHT. 1 OF 1 DWG. NO. 01027600	SCALE: DWG. SIZE: D

## ASSEMBLY PARTS LIST

[illegible]

REV	DESCRIPTION	BY	DATE APPROVED
XA	RELEASE FOR PROTOTYPE;SX161	RLK	1/22/01
-	RELEASED TO RECORDS	RLK	8/01/01



-01




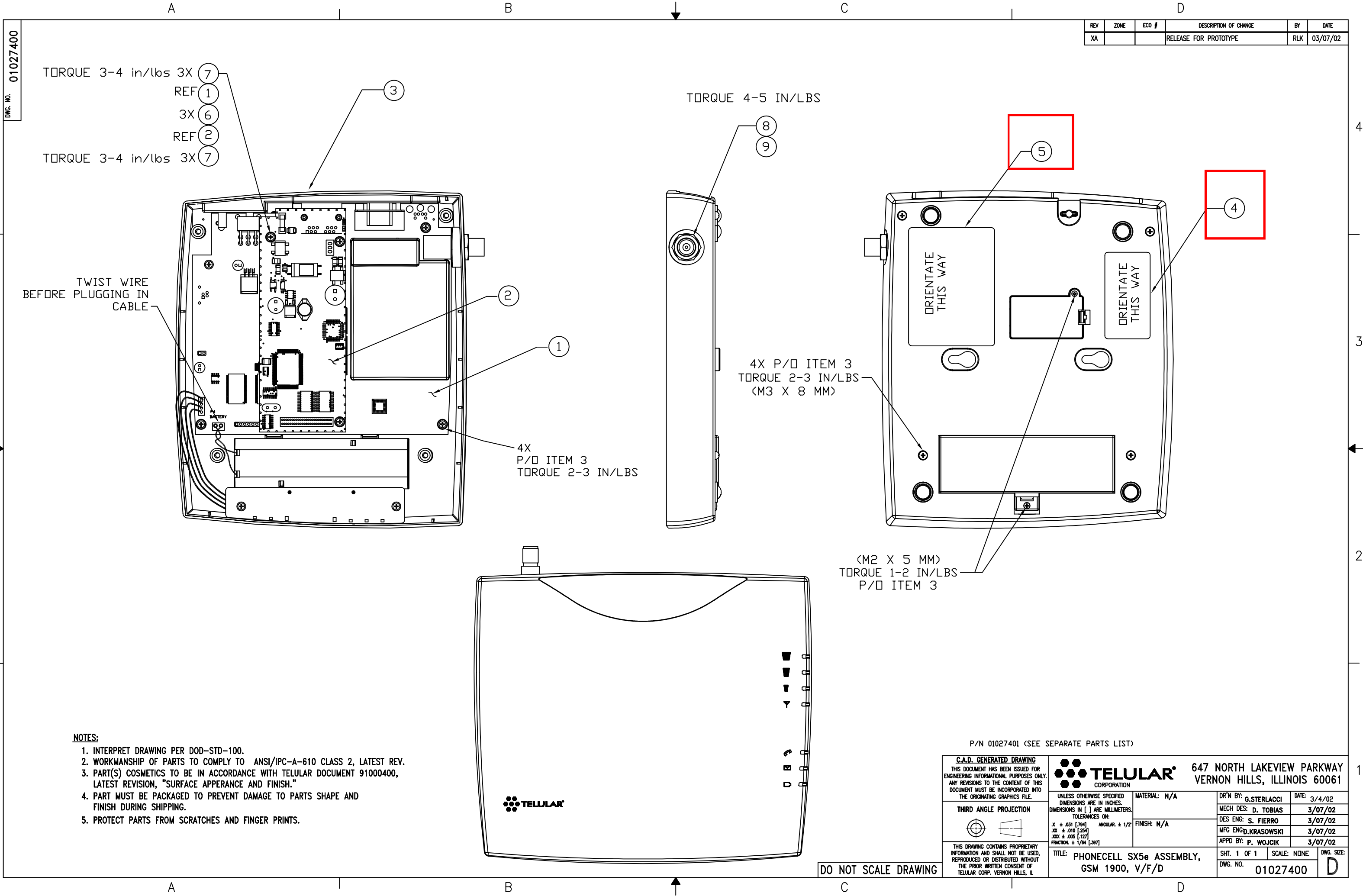
-02

**NOTE:**

1. MATERIAL: 2" x 3" ADHESIVE-BACKED WHITE POLYESTER OR APPROVED EQUIVALENT PER THE DURABILITY TEST OF 1.7.15 OF BS EN 60950: 1992 (BS 7002: 1992).
2. TEXT FONTS, SIZE AND LOCATION SHALL BE APPROVED BY THE MARKETING DEPARTMENT PRIOR TO VOLUME PRODUCTION.
3. COLOR: ALL TEXT AND SYMBOLS TO BE BLACK.

P/N 96026202 WITHOUT FCC RULES  
P/N 96026201 WITH FCC RULES

 <b>TELULAR</b>			
APPROVED BY: <b>PRW</b>	DES. ENG.	G. KNIGHT	DRAWN BY: <b>D. TOBIAS</b>
	MFG.	D. KRASOWSKI	
	MECH. DESIG.	D. TOBIAS	
TITLE: <b>LABEL, LOGO/PATENTS</b>			DRAWING NUMBER: <b>96026200</b>
DATE: <b>1/22/01</b>			SHT. <b>1</b> OF <b>1</b>



## ASSEMBLY PARTS LIST

[illegible]