

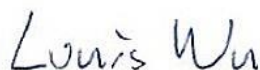


FCC RADIO TEST REPORT

FCC ID : HD5-CK67X1N
Equipment : Mobile Computer
Brand Name : Honeywell
Model Name : CK67X1N
Applicant : Honeywell International Inc
9680 Old Bailes Rd. Fort Mill, SC 29707 United States
Manufacturer : Honeywell International Inc
9680 Old Bailes Rd. Fort Mill, SC 29707 United States
Standard : FCC Part 15 Subpart E §15.407

The product was received on Nov. 27, 2024 and testing was performed from Nov. 27, 2024 to Nov. 27, 2024. We, Sporton International Inc. EMC & Wireless Communications Laboratory, would like to declare that the tested sample has been evaluated in accordance with the test procedures and has been in compliance with the applicable technical standards.

The test results in this partial report apply exclusively to the tested model / sample. Without written approval from Sporton International Inc. EMC & Wireless Communications Laboratory, the test report shall not be reproduced except in full.



Approved by: Louis Wu

Sporton International Inc. EMC & Wireless Communications Laboratory

No. 52, Huaya 1st Rd., Guishan Dist., Taoyuan City 333, Taiwan (R.O.C.)



Table of Contents

History of this test report.....	3
Summary of Test Result.....	4
1 General Description	5
1.1 Product Feature of Equipment Under Test.....	5
1.2 Modification of EUT	5
1.3 Testing Location	5
1.4 Applicable Standards.....	6
2 Test Result	7
2.1 Proper Power Adjustment, Client Devices Connected to a Standard Power Access Point (APC) ...	7
2.2 Dual Client Test, Demonstration of Proper Power Adjustment based on Associated AP	12
3 List of Measuring Equipment.....	15



History of this test report

Report No.	Version	Description	Issue Date
FR461705-04	01	Initial issue of report	Jan. 22, 2025

Summary of Test Result

Report Clause	Ref Std. Clause	Test Items	Result (PASS/FAIL)	Remark
2.1	15.407 KDB 987594 D02 Section II. L.	Proper Power Adjustment, Client Devices Connected to a Standard Power Access Point (APC)	Pass	-
2.2	15.407 KDB 987594 D02 Section II. K.	Dual Client Test, Demonstration of Proper Power Adjustment based on Associated AP	Pass	-

Conformity Assessment Condition:

The test results (PASS/FAIL) with all measurement uncertainty excluded are presented against the regulation limits or in accordance with the requirements stipulated by the applicant/manufacture who shall bear all the risks of non-compliance that may potentially occur if measurement uncertainty is taken into account.

Disclaimer:

The product specifications of the EUT presented in the test report that may affect the test assessments are declared by the manufacturer who shall take full responsibility for the authenticity.

Reviewed by: Wei Chen

Report Producer: Lucy Wu

1 General Description

1.1 Product Feature of Equipment Under Test

Product Feature
General Specs LTE/5G NR, Bluetooth, Wi-Fi 2.4GHz 802.11b/g/n/ac/ax, Wi-Fi 5GHz 802.11a/n/ac/ax, Wi-Fi 6GHz 802.11a/ax, and NFC.
Antenna Type WWAN: Coupling type (LDS) Antenna WLAN: <Ant. 0>: PIFA Antenna <Ant. 1>: PIFA Antenna Bluetooth: <Ant. 0>: PIFA Antenna <Ant. 1>: PIFA Antenna NFC: Loop Antenna

Remark: The EUT's information above is declared by manufacturer. Please refer to Disclaimer in report summary.

1.2 Modification of EUT

No modifications made to the EUT during the testing.

1.3 Testing Location

Test Site	Sporton International Inc. EMC & Wireless Communications Laboratory
Test Site Location	No.52, Huaya 1st Rd., Guishan Dist., Taoyuan City 333, Taiwan (R.O.C.) TEL: +886-3-327-3456 FAX: +886-3-328-4978
Test Site No.	Sporton Site No. DF02-HY
Temperature	21.9~23.5°C
Humidity	44.2~51.7 %
Test Engineer	Rebecca Li

FCC designation No.: TW1190



1.4 Applicable Standards

According to the specifications declared by the manufacturer, the EUT must comply with the requirements of the following standards:

- ♦ FCC Part 15 Subpart E
- ♦ FCC KDB 789033 D02 General UNII Test Procedures New Rules v02r01.
- ♦ FCC KDB 987594 D02 U-NII 6 GHz EMC Measurement v03
- ♦ ANSI C63.10-2013

Remark:

1. All the test items were validated and recorded in accordance with the standards without any modification during the testing.
2. The TAF code is not including all the FCC KDB listed without accreditation.



2 Test Result

2.1 Proper Power Adjustment, Client Devices Connected to a Standard Power Access Point (APC)

2.1.1 Limit of Standard Client Proper Power Adjustment

15.407 KDB 987594 D02 Section II. L. Power limits for standard client devices

c) The maximum power limits shall remain at least 6 dB below the power levels authorized for the associated standard-power access point

2.1.2 Test Procedures of Standard Client Proper Power Adjustment

The testing follows FCC KDB 987594 D02 U-NII 6 GHz EMC Measurement v03.

Section L. Proper Power Adjustment

2.1.3 Proper Power Adjustment, Client Devices Connected to a Standard Power Access Point

A client device that connects to a Standard Power AP must limit its power to a minimum of 6 dB lower than its associated Standard Power access point's authorized transmit power. The term "authorized" means the AFC-approved power level for the AP to use on a particular channel.

Test procedure to show that the client device can lower its power accordingly.

2.1.4 Test Procedure:

1. Connect equipment as shown in Figure 7 below.
2. Adjust Atten 1 to Std Power AP so as to facilitate error free communication with the Client but protect the Client receiver from overload or damage.
3. Configure the Client and AP so that they associate and start sending data (stream data). The AP should be configured such that its registered power is 36 dBm EIRP.
4. Verify transmission between Client and Std Power AP. Additional attenuators may be required to protect measurement equipment. Measure the Client RF power using any of the methods in C63.10 for NII devices.
5. Use this power, along with its antenna gain, to calculate the Client EIRP.
6. The Client EIRP should be minimally 6 dB lower than that of the AP.
7. Repeat Steps 2 through 5 at two other selected measurement points – the first at the midpoint and the second at the lowest rated power of the client as declared by the manufacturer.

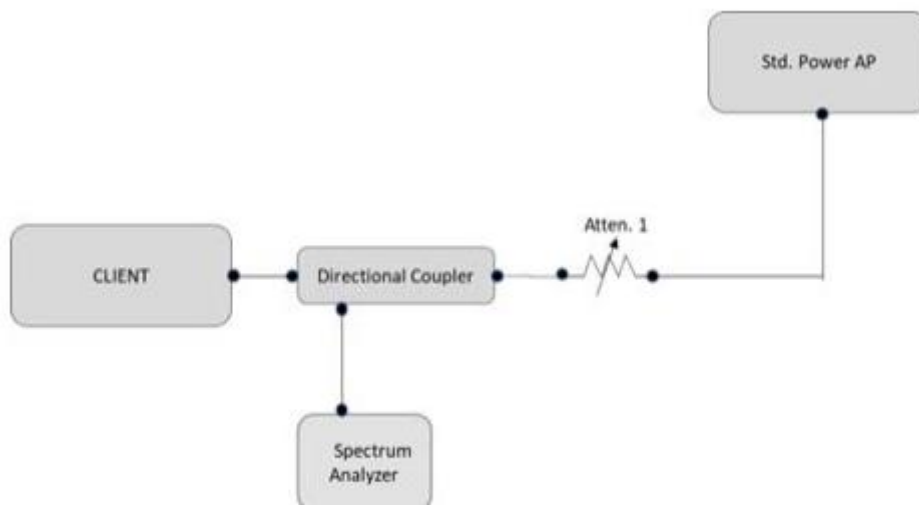


Figure 7. Test setup for conducted testing

2.1.5 Test Result Summary

Companion Standard Power AP: Brand name: Qualcomm, Model name: Wakiki

802.11ax 20MHz bandwidth

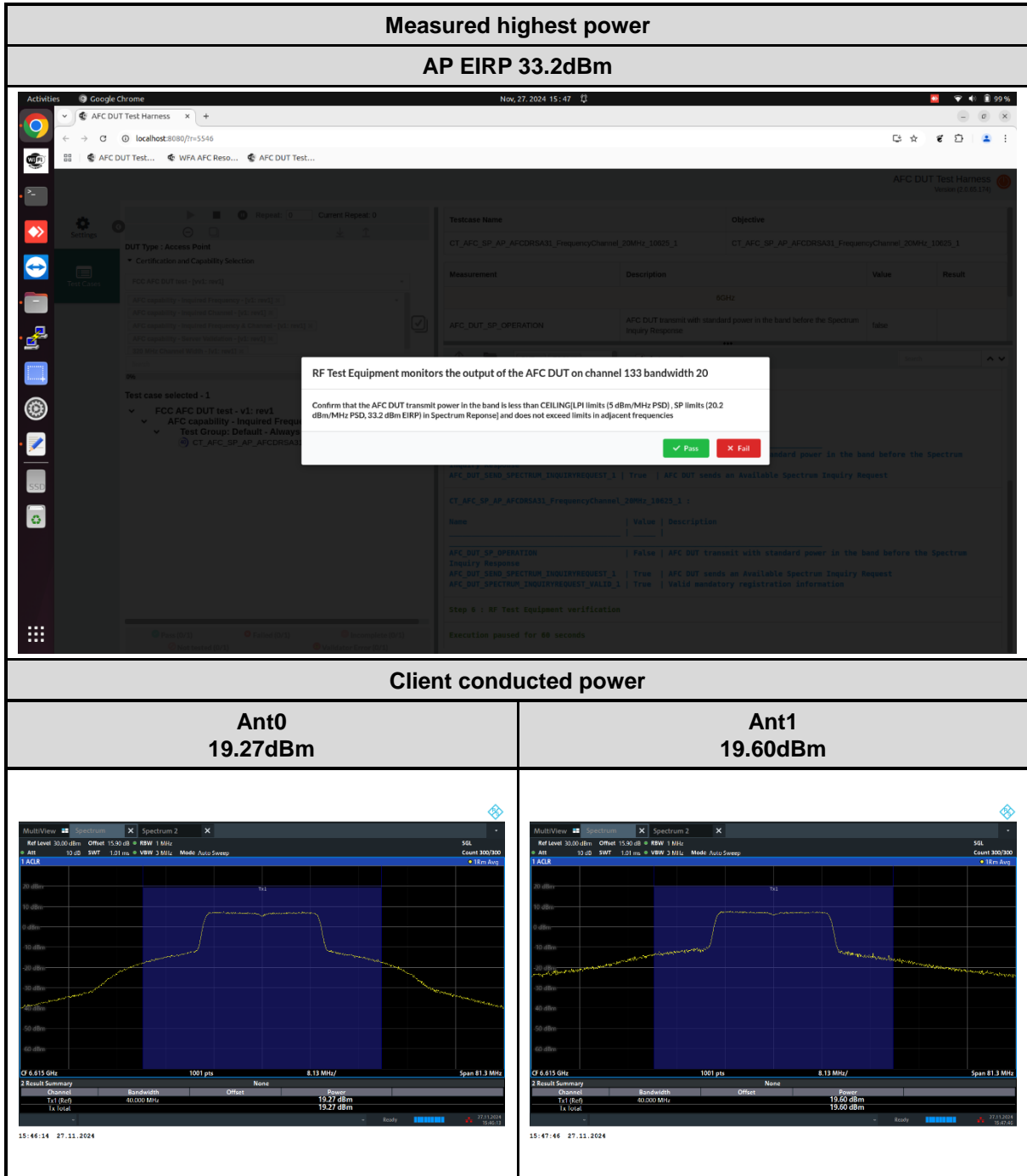
Test channel 133

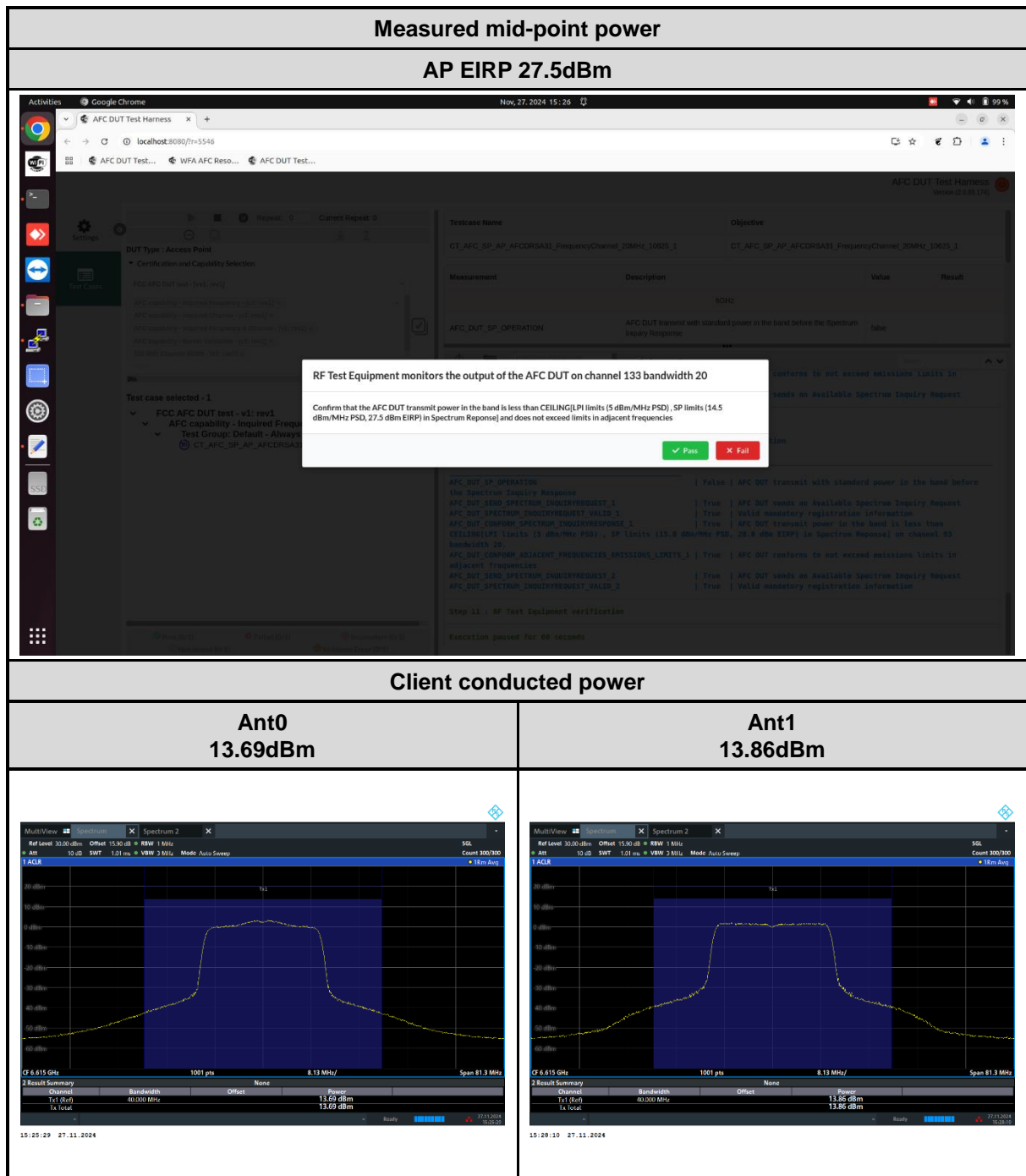
	Client Conducted Power (dBm)			Client EIRP (dBm)	AP EIRP (dBm)	AP to client EIRP Delta (dB)
	Ant0	Ant1	MIMO			
Maximum EIRP	19.27	19.60	22.45	26.45	33.2	6.75
Midpoint EIRP	13.69	13.86	16.79	20.79	27.5	6.71
Lowest EIRP	8.40	8.35	11.39	15.39	21.5	6.11
Requirement						At least 6 dB
Result						Pass

Note: Client EIRP = Client MIMO conducted power + antenna gain (4dBi).



2.1.6 Test Result Plot







2.2 Dual Client Test, Demonstration of Proper Power Adjustment based on Associated AP

2.2.1 Limit of Proper Power Adjustment

15.407 KDB 987594 D02 Section II. K. Power limits for standard client devices

A client device may connect to a Standard Power AP with a maximum power level of 30 dBm EIRP. A client may also connect to a Low Power indoor AP, but the power level is limited to a maximum of 24 dBm EIRP.

2.2.2 Test Procedures of Standard Client Proper Power Adjustment

The testing follows FCC KDB 987594 D02 U-NII 6 GHz EMC Measurement v03.

Section K. Dual Client Test, Demonstration of Proper Power Adjustment based on Associated AP.

2.2.3 Test Procedure:

1. Connect equipment as shown in Figure 6 below.
2. Adjust Atten 2 to Std Power AP so as to facilitate error free communication with the Client (Atten 1 should be set to High on the RF path to the Low Power AP)
3. Configure the Client and APs so that they associate and start sending data (stream data). It is important that the client is configured to transmit at its highest power level. Initially, because the attenuation on Atten 1 is set high, the Client will only associate with the Std Power AP.
4. Verify transmission between Client and Std Power AP. Additional attenuators may be required to protect measurement equipment. Measure the Client RF power using any of the methods in C63.10 for NII devices.
5. Gradually increase Atten 2 while at the same time decreasing Atten 1. This simulates the Client moving from outdoors to indoors. At some level of attenuation the Client should associate with the Low Power indoor AP.
6. Verify transmission between Client and Low Power AP.
7. Measure the RF power of the Client device using the same method as in step 4. Verify the power is no more than 24 dBm EIRP

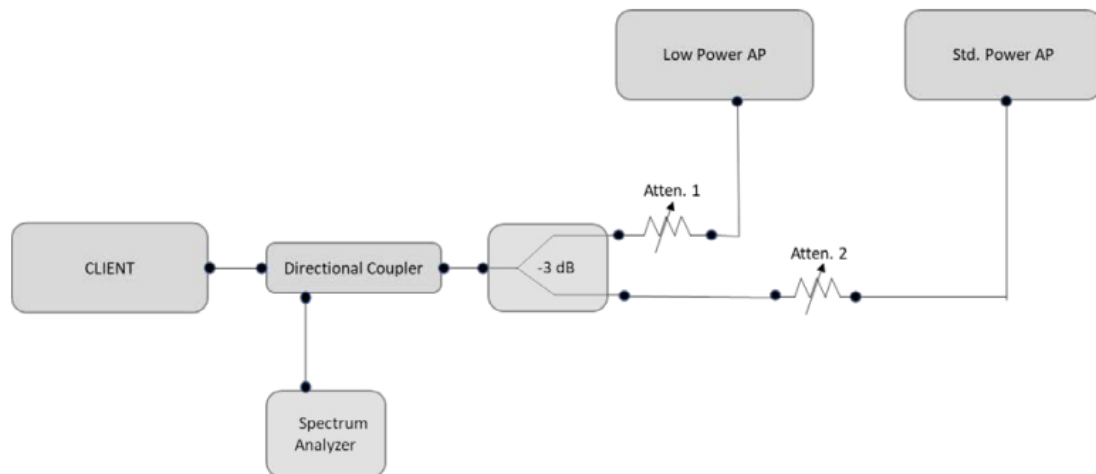


Figure 6. Test setup for conducted testing

2.2.4 Test Result Summary

Companion Standard Power AP: Brand name: Qualcomm, Model name: Wakiki

Companion Low Power indoor AP: Brand name: ASUS, Model name: GTAXE11000

802.11ax 20MHz bandwidth

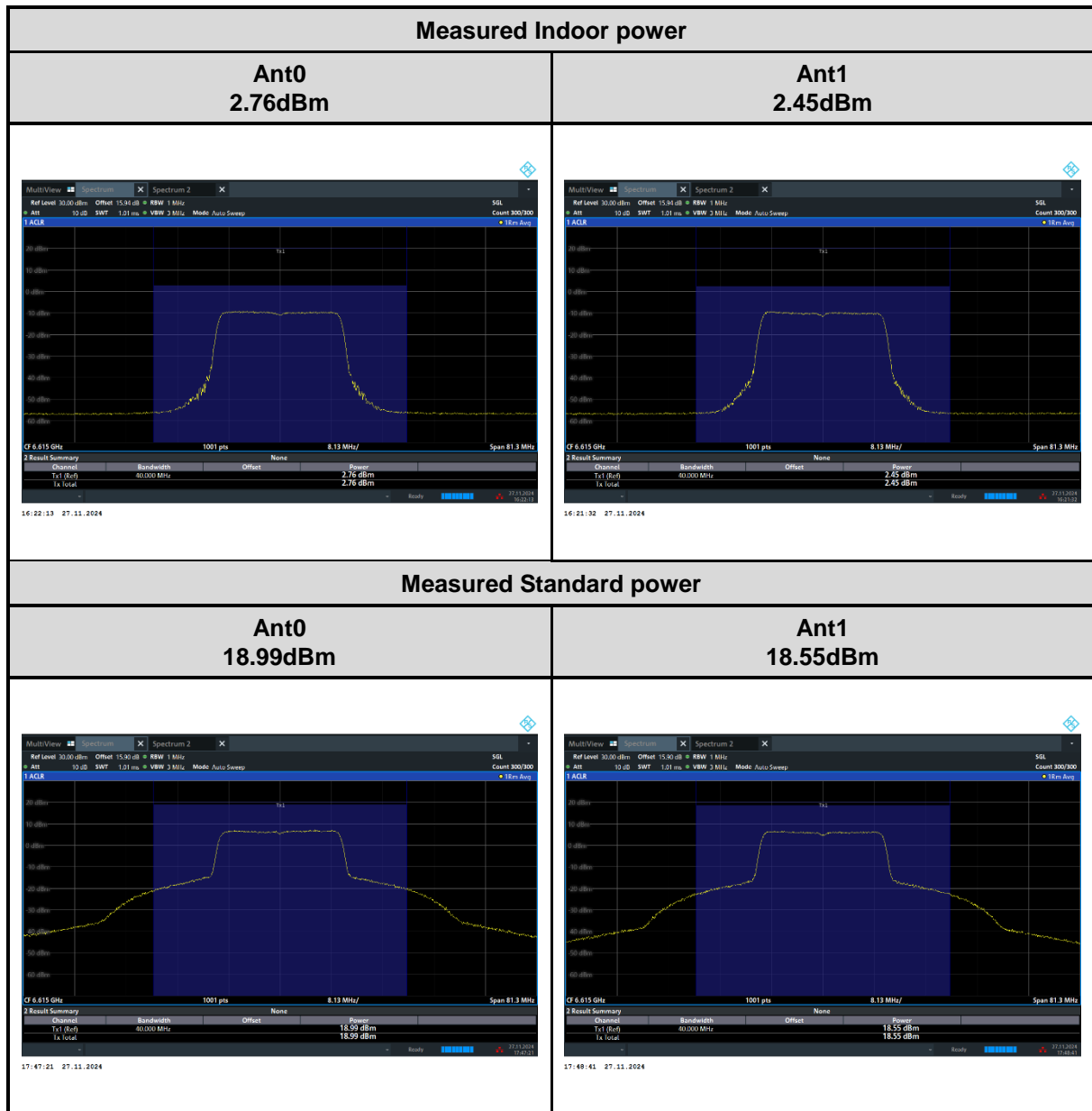
Test channel 133

	Client Conducted Power (dBm)			Client EIRP (dBm)	Limit EIRP (dBm)	Result
	Ant0	Ant1	MIMO			
Indoor EIRP	2.76	2.45	5.62	9.62	24	Pass
Standard EIRP	18.99	18.55	21.79	25.79	30	Pass

Note: Client EIRP = Client MIMO conducted power + antenna gain (4dBi).



2.2.5 Test Result Plot





3 List of Measuring Equipment

Instrument	Brand Name	Model No.	Serial No.	Characteristics	Calibration Date	Test Date	Due Date	Remark
Spectrum Analyzer	Rohde & Schwarz	FSV3013	101549	10Hz~13.6GHz	Jan. 30, 2024	Nov. 27, 2024	Jan. 29, 2025	APC (DF02-HY)
Power Divider	Woken	2Way Divider	DCMB1KW7A1	0.5GHz~18GHz	Calibration from System	Nov. 27, 2024	Calibration from System	APC (DF02-HY)
Power Divider	Woken	2Way Divider	DCMB1KW7A2	0.5GHz~18GHz	Calibration from System	Nov. 27, 2024	Calibration from System	APC (DF02-HY)
Power Divider	MTJ	SMA 2Way Power Divider	MD10016	0.5GHz~6GHz	Calibration from System	Nov. 27, 2024	Calibration from System	APC (DF02-HY)
Coupler	Woken	10dB 30W SMA	DOM5CIW3A1	0.5~18GHz	Calibration from System	Nov. 27, 2024	Calibration from System	APC (DF02-HY)
RF Cable	MTJ Cooperstion	SBF405-105FL EX	MTJ-30cm-01	30 kHz~18GHz	Calibration from System	Nov. 27, 2024	Calibration from System	APC (DF02-HY)
RF Cable	MTJ Cooperstion	SBF405-105FL EX	MTJ-30cm-02	30 kHz~18GHz	Calibration from System	Nov. 27, 2024	Calibration from System	APC (DF02-HY)
RF Cable	MTJ Cooperstion	SBF405-105FL EX	MTJ-30cm-03	30 kHz~18GHz	Calibration from System	Nov. 27, 2024	Calibration from System	APC (DF02-HY)
RF Cable	MTJ Cooperstion	SBF405-105FL EX	MTJ-30cm-05	30 kHz~18GHz	Calibration from System	Nov. 27, 2024	Calibration from System	APC (DF02-HY)
RF Cable	MVE	SPF141	SPF141-100cm-# 13	30 kHz~18GHz	Calibration from System	Nov. 27, 2024	Calibration from System	APC (DF02-HY)
RF Cable	MVE	SPF141	SPF141-100cm-# 14	30 kHz~18GHz	Calibration from System	Nov. 27, 2024	Calibration from System	APC (DF02-HY)
RF Cable	EC	SS405	SS405-100cm-01	30 kHz~18GHz	Calibration from System	Nov. 27, 2024	Calibration from System	APC (DF02-HY)
RF Cable	EC	SS405	SS405-100cm-03	30 kHz~18GHz	Calibration from System	Nov. 27, 2024	Calibration from System	APC (DF02-HY)
RF Cable	EC	SS405	SS405-100cm-04	30 kHz~18GHz	Calibration from System	Nov. 27, 2024	Calibration from System	APC (DF02-HY)
RF Cable	EC	SS405	SS405-100cm-06	30 kHz~18GHz	Calibration from System	Nov. 27, 2024	Calibration from System	APC (DF02-HY)

————THE END————