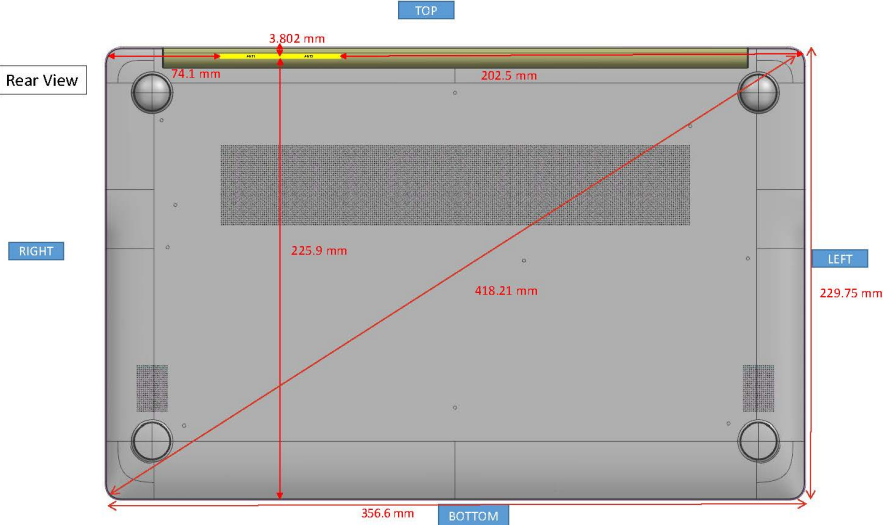


**APPENDIX H: DUT ANTENNA DIAGRAM & SAR TEST SETUP
PHOTOGRAPHS**

FCC ID: A3LNP750XQA	SAR EVALUATION REPORT	Approved by: Technical Manager
DUT Type: Portable Computing Device		APPENDIX H: Page 1 of 4

Note: Exact antenna dimensions and separation distances are shown in the Technical Descriptions in the FCC Filing.



Device Info
Main (Ant2): WLAN Tx/Rx, BT Tx/Rx
Aux (Ant1): WLAN Tx/Rx, BT Tx/Rx

Figure H-1
DUT Antenna Locations

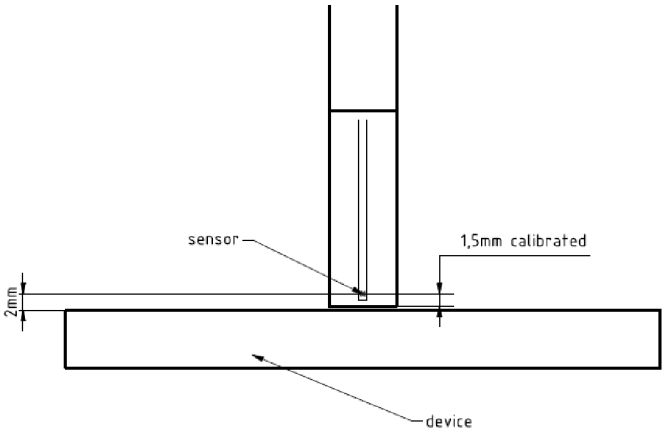


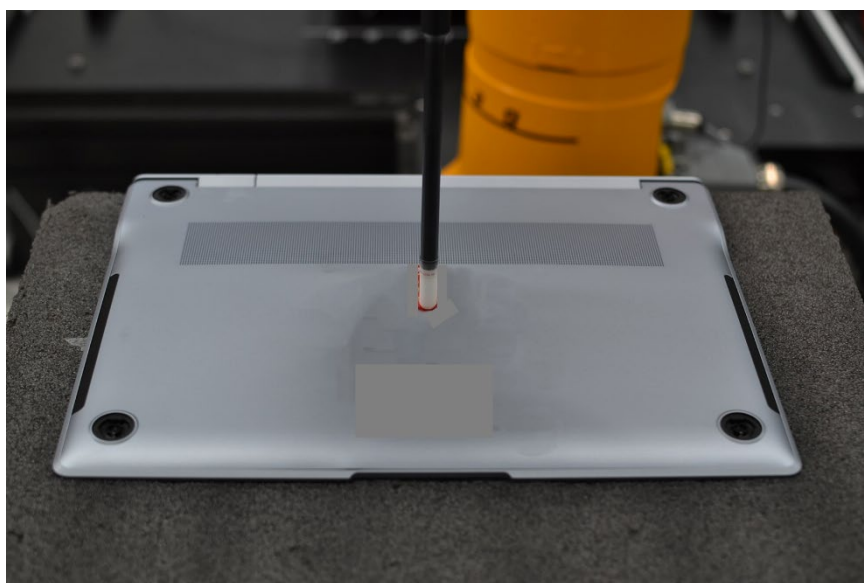
Figure H-2
EUmWVx Probe

Note: Distances below are distance from device surface to sensor-center. Therefore, distances include 1.5 mm for Probe Tip to Sensor Calibration Points.

FCC ID: A3LNP750XQA	SAR EVALUATION REPORT	Approved by: Technical Manager
DUT Type: Portable Computing Device		APPENDIX H: Page 2 of 4



SAR Test Setup Photo 1 – Laptop, Bottom Edge at 0mm



Test Setup Photo 2 - Near Field Power Density, Bottom Edge at 2 mm

FCC ID: A3LNP750XQA	SAR EVALUATION REPORT	Approved by: Technical Manager
DUT Type: Portable Computing Device		APPENDIX H: Page 3 of 4



Test Setup Photo 3 - Near Field Power Density, Bottom Edge at 10.02 mm

FCC ID: A3LNP750XQA	SAR EVALUATION REPORT	Approved by: Technical Manager
DUT Type: Portable Computing Device		APPENDIX H: Page 4 of 4