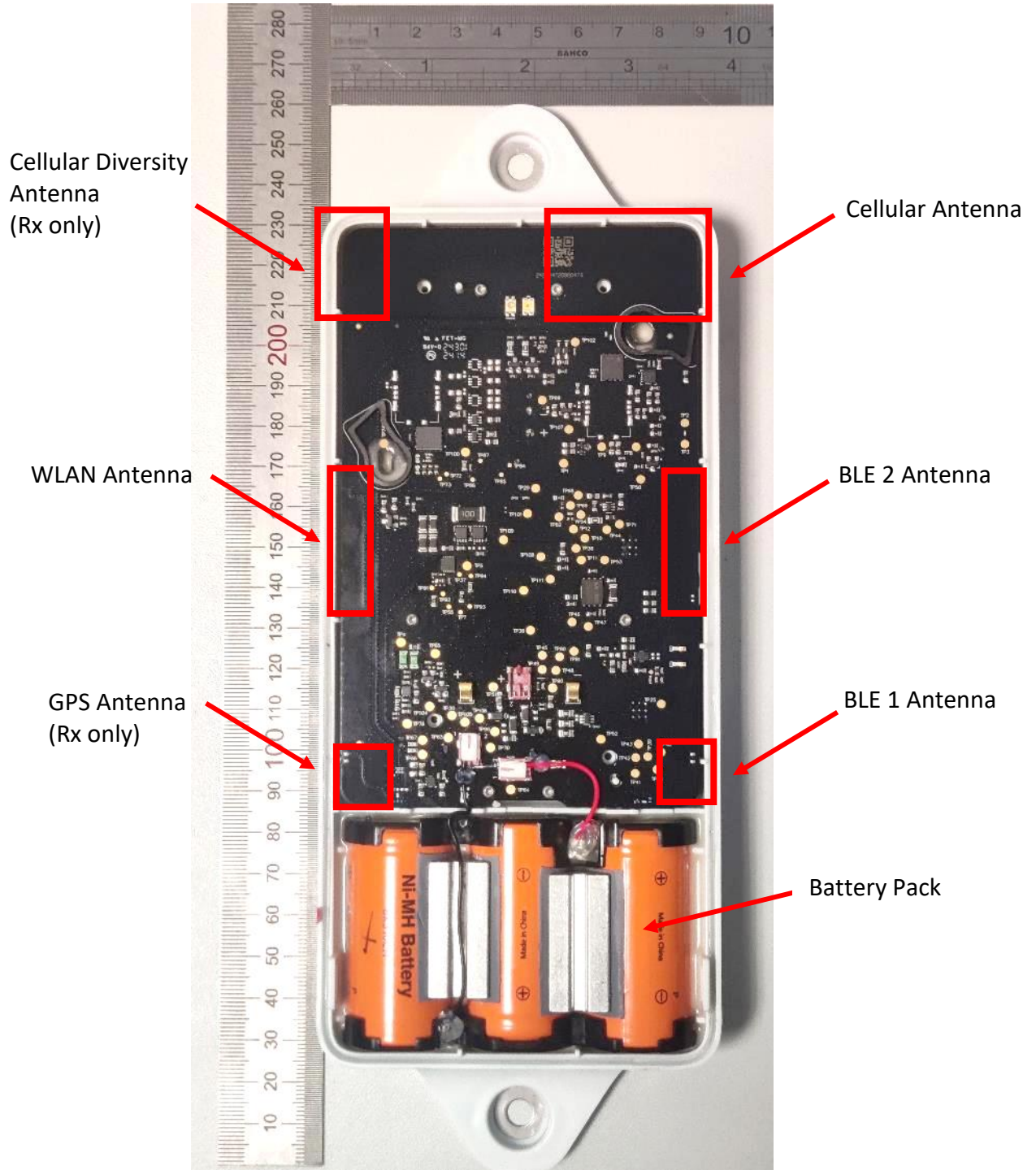
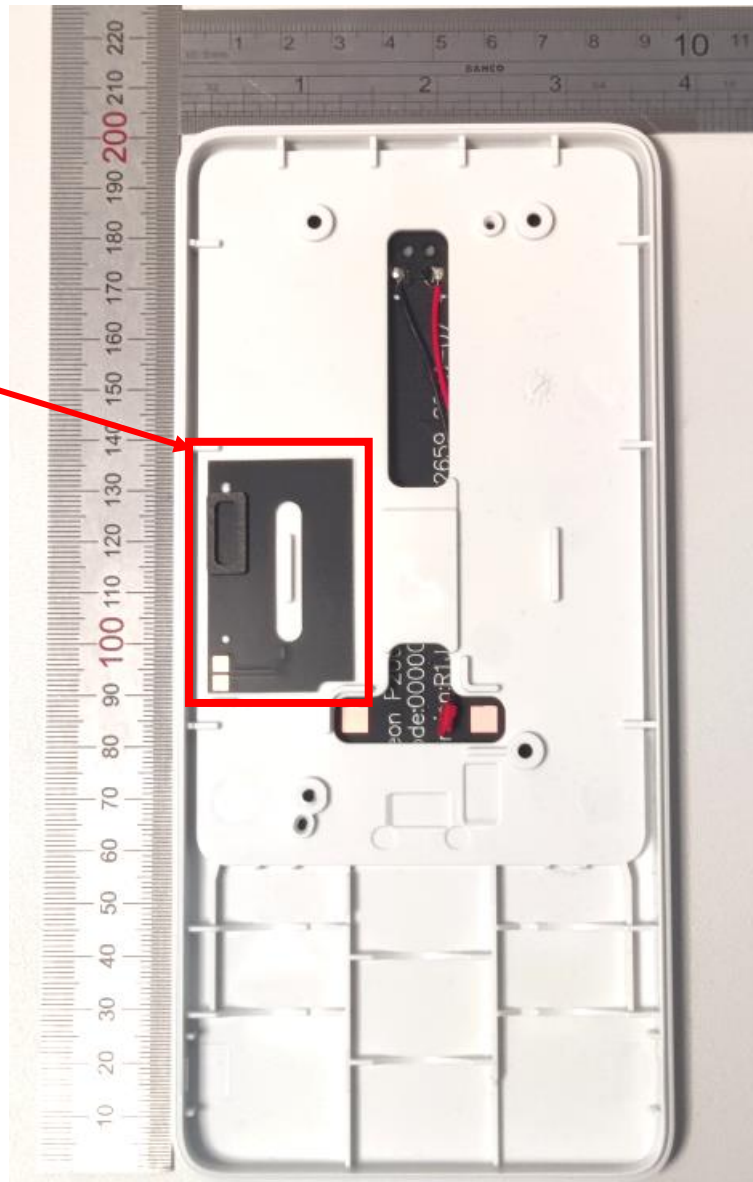


Model: 4111000
Internal Photos



Photograph 1: EUT Front Cover Removed

NFC Antenna
(Rx only)



Photograph 2: EUT Front Cover



Photograph 3: PCB Front

Narrowband
LTE CAT-M1/NB-IoT
Cellular module
(soldered on PCB)

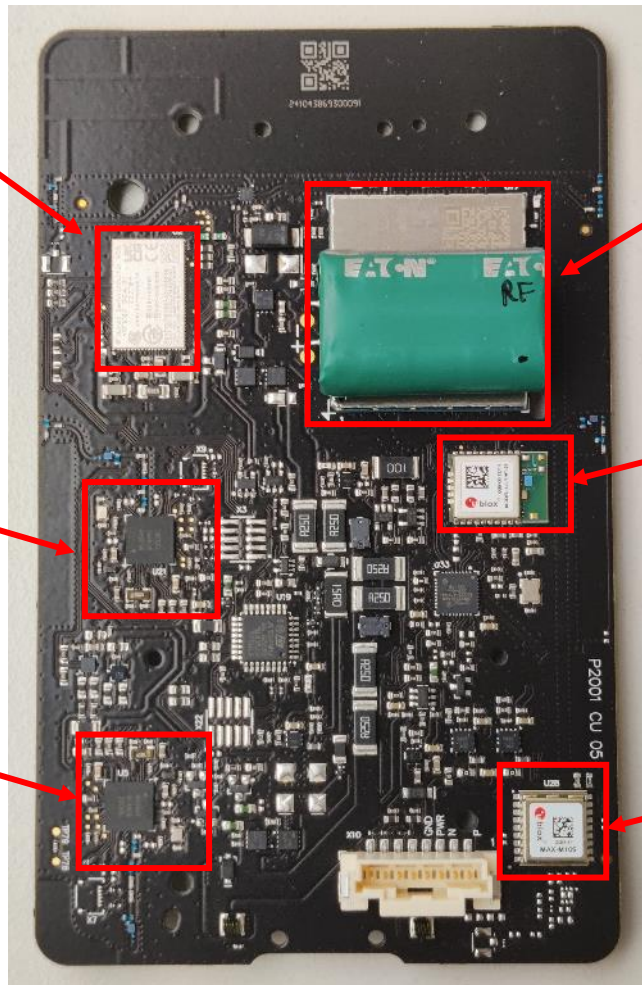
Cellular module
(soldered on PCB)

WLAN module
(soldered on PCB)

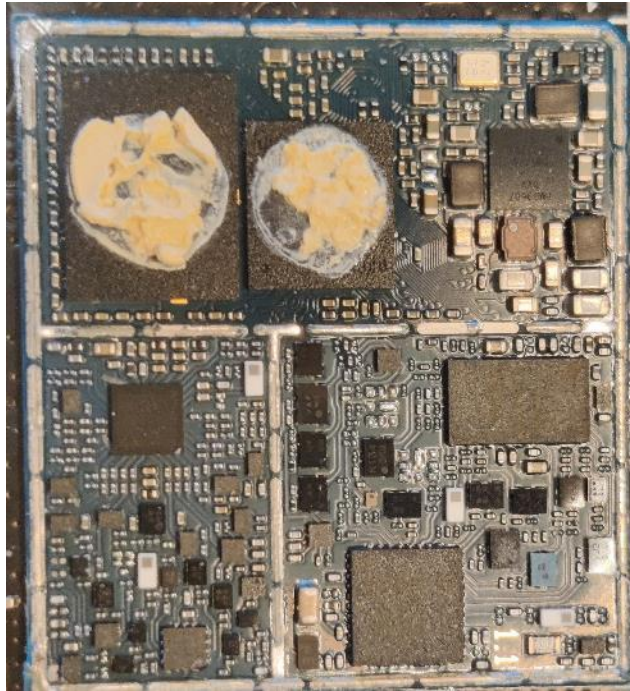
Discrete BLE 2

Discrete BLE 1

GPS module
(soldered on PCB)

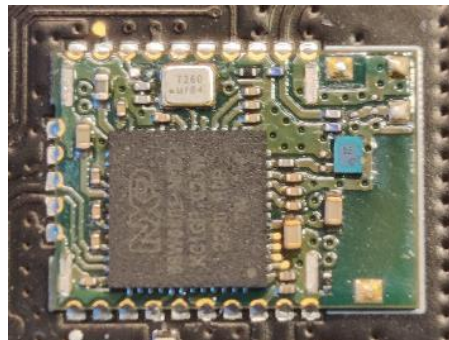


Photograph 4: PCB Back

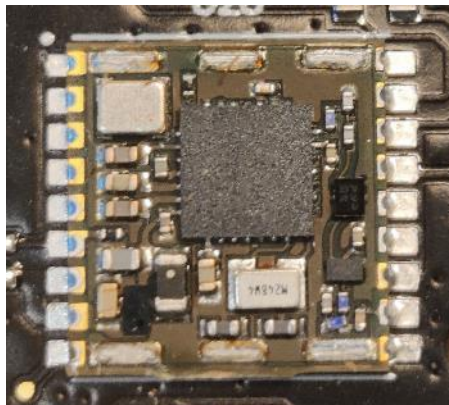


Photograph 5: Cellular module with RF Shield removed

Note! Narrowband cellular module is molded into substrate impossible to expose



Photograph 6: WLAN module with RF Shield removed



Photograph 7: GPS module with RF Shield removed