

EXHIBIT 9

Internal Photographs

(Pursuant to FCC Part 2.1033(b)(7), 2.1033(c)(12) and RSP 100 Sec 8.3)

The following photographs are attached.

Exhibit

- | | | |
|----|--|----|
| 1. | Main board Front <u>with</u> Shields and Lens | 9A |
| 2. | Main board Front <u>without</u> Shields and Lens | 9B |
| 3. | Main board Back <u>with</u> Shields | 9C |
| 4. | Main board Back <u>without</u> Shields | 9D |
| 5. | Main board Back <u>with</u> chassis and Back housing | 9E |
| 6. | Main board Front <u>with</u> chassis with Battery in front housing | 9F |
| 7. | Battery Pack and front housing without Battery Pack | 9G |
| 8. | Battery pack | 9H |
| 9. | Exploded View of Device | 9I |

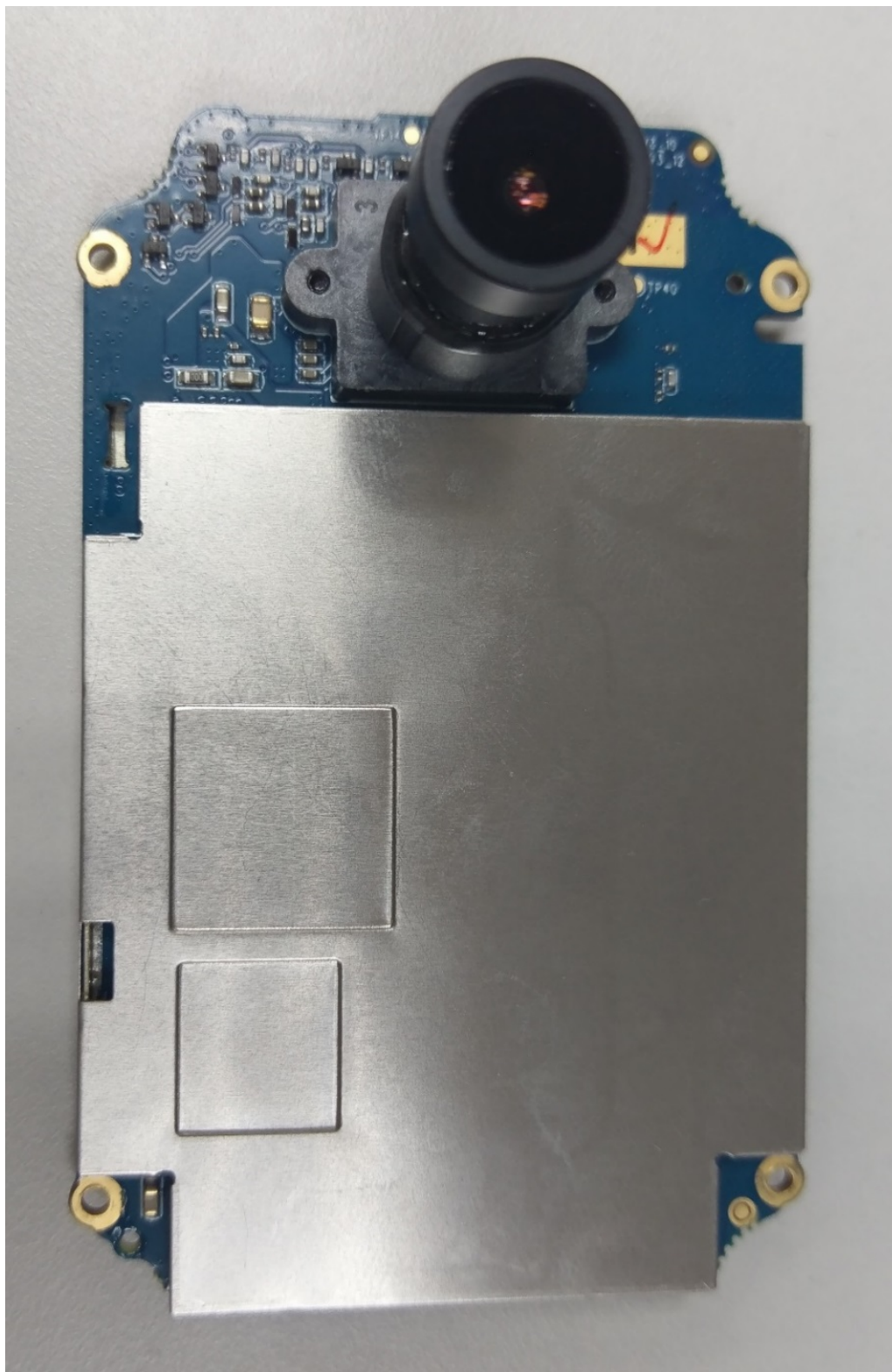


Exhibit 9A: Main board Front with Shields and Lens

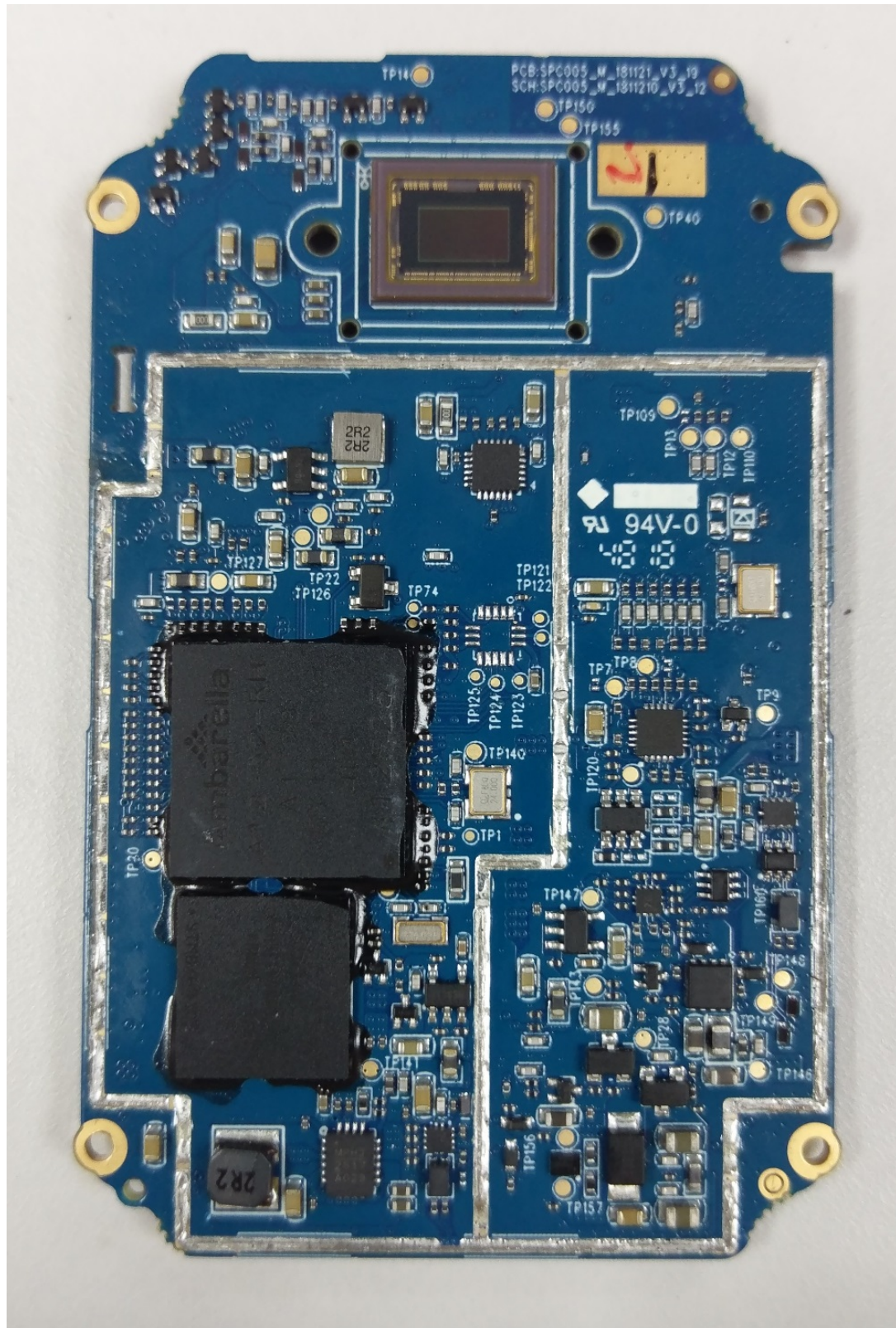


Exhibit 9B: Main Board Front without Shields and Lens

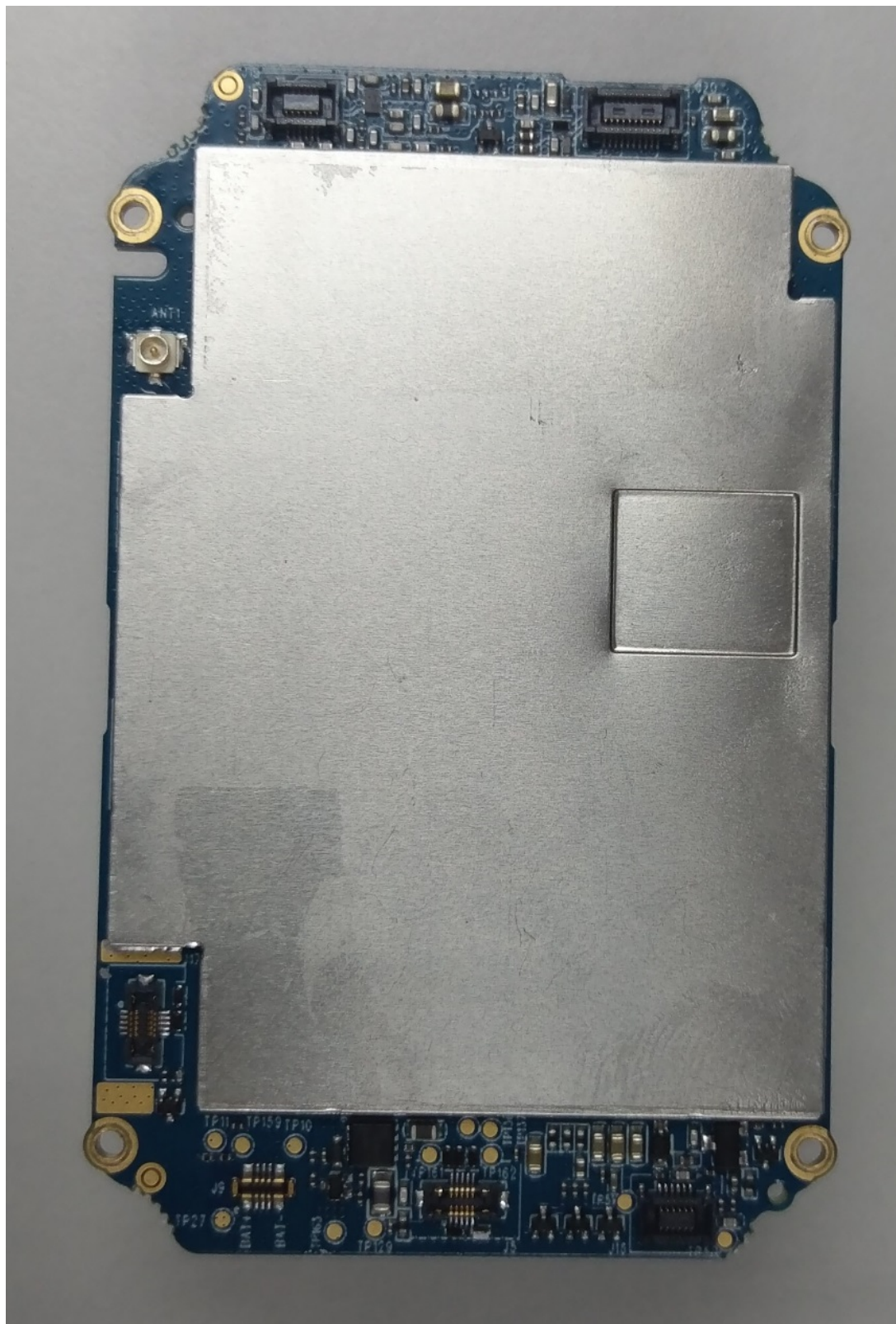


Exhibit 9C: Main board Back with Shields

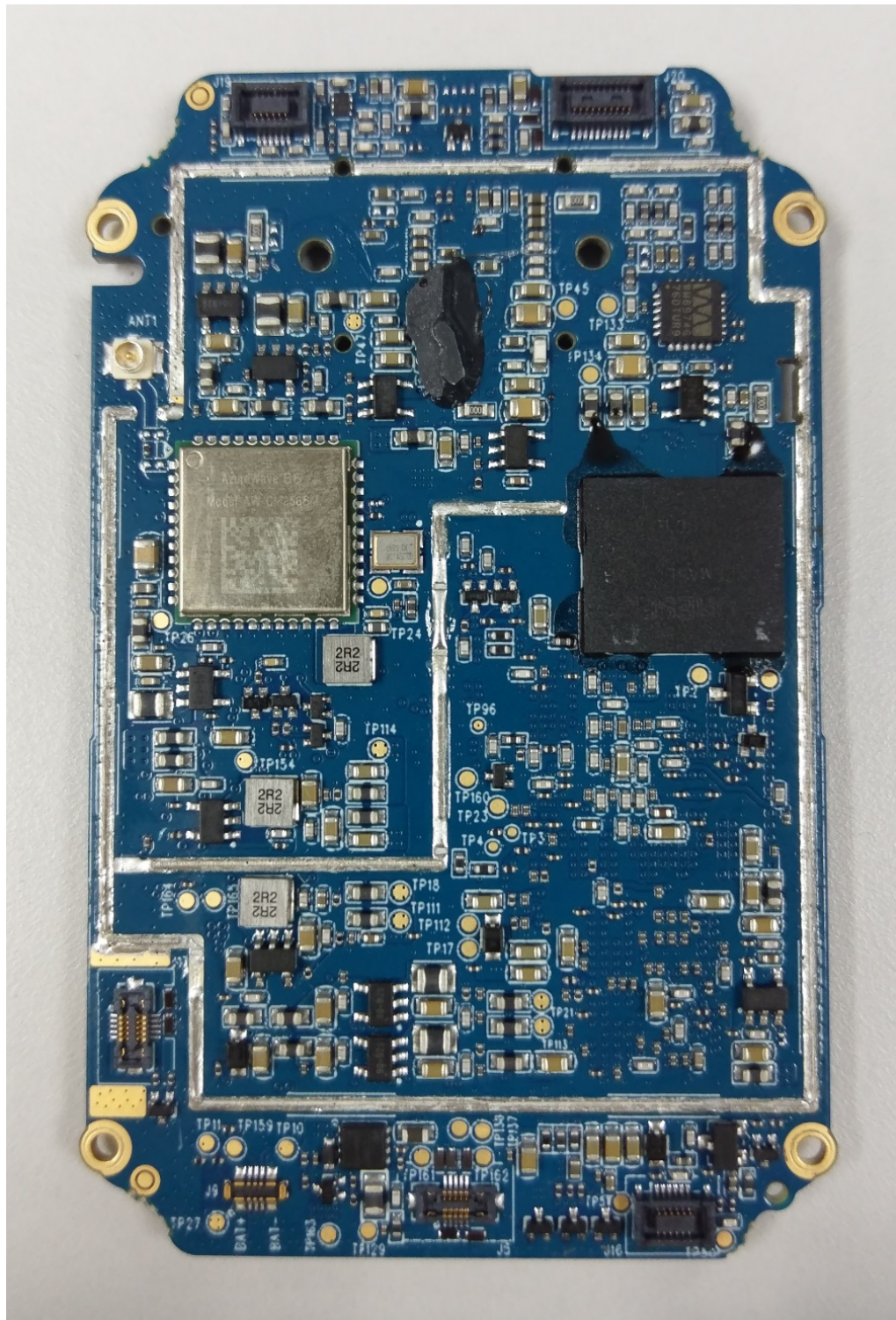


Exhibit 9D: Main board Back without Shields

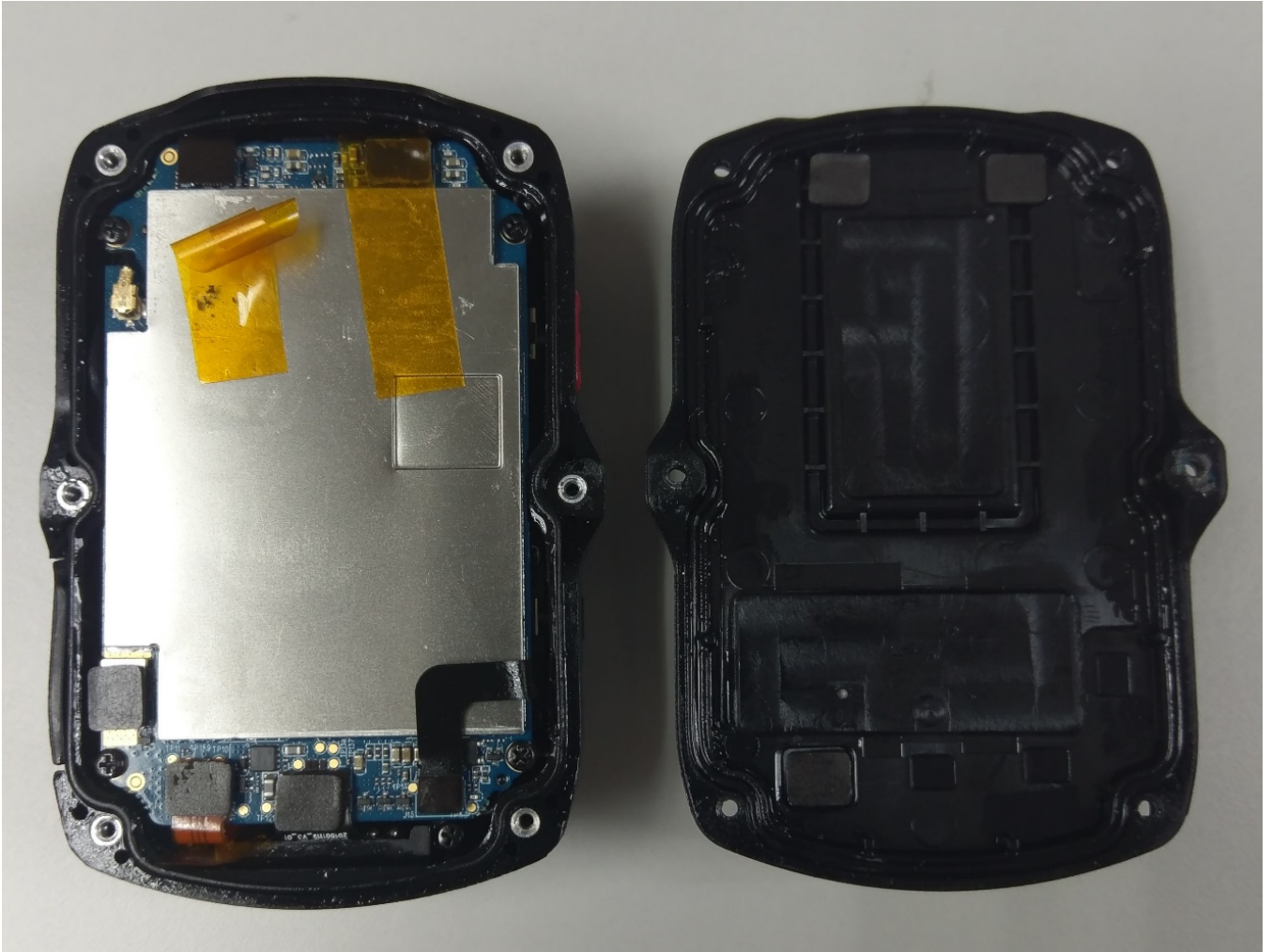


Exhibit 9E: Main board Back with chassis and Back housing



Exhibit 9F: Main board Front with Chassis with Battery in front housing



Exhibit 9G: Battery Pack and front housing without Battery Pack



Exhibit 9H: Battery Pack

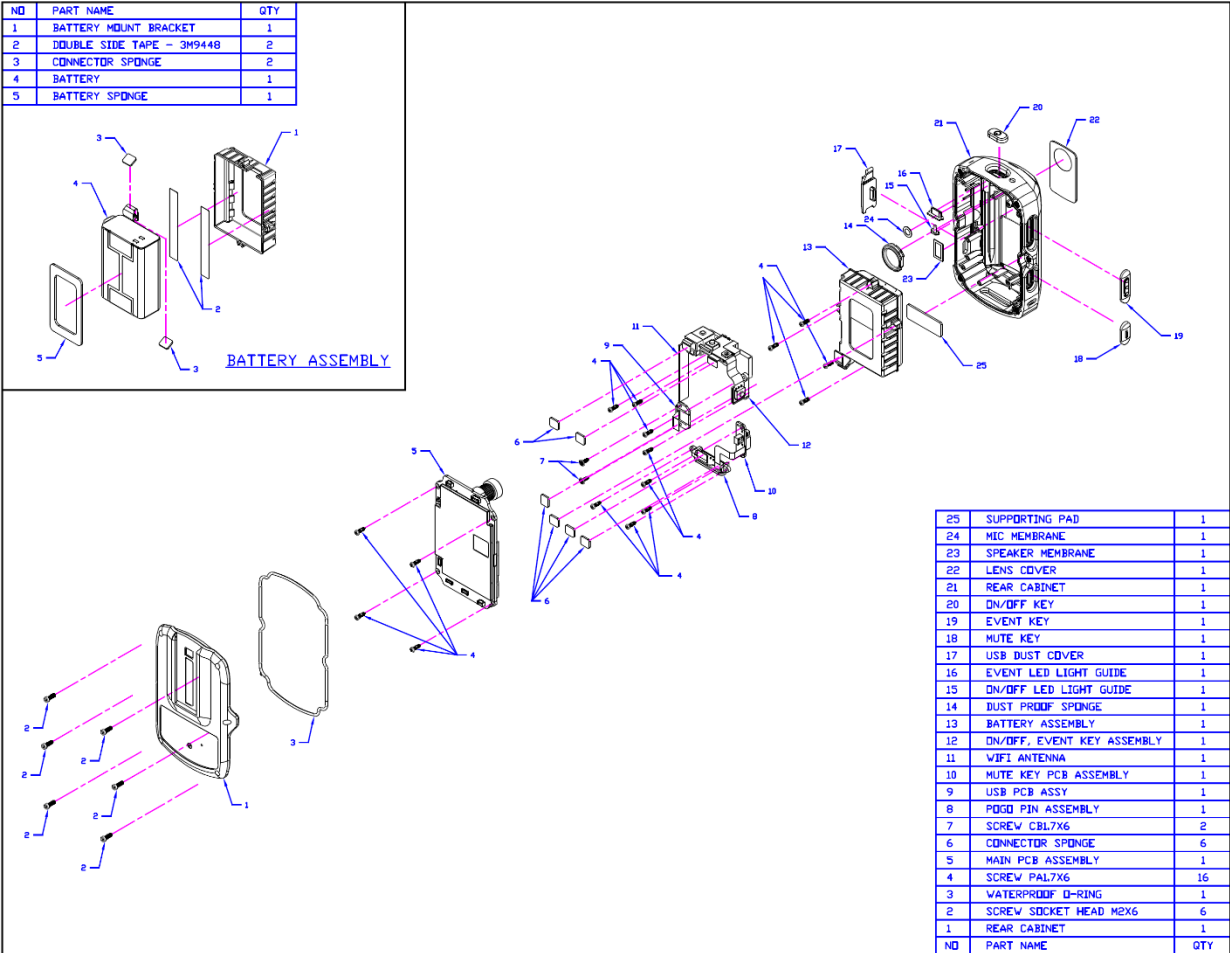


Exhibit 9I: Exploded View of Device

*** END ***