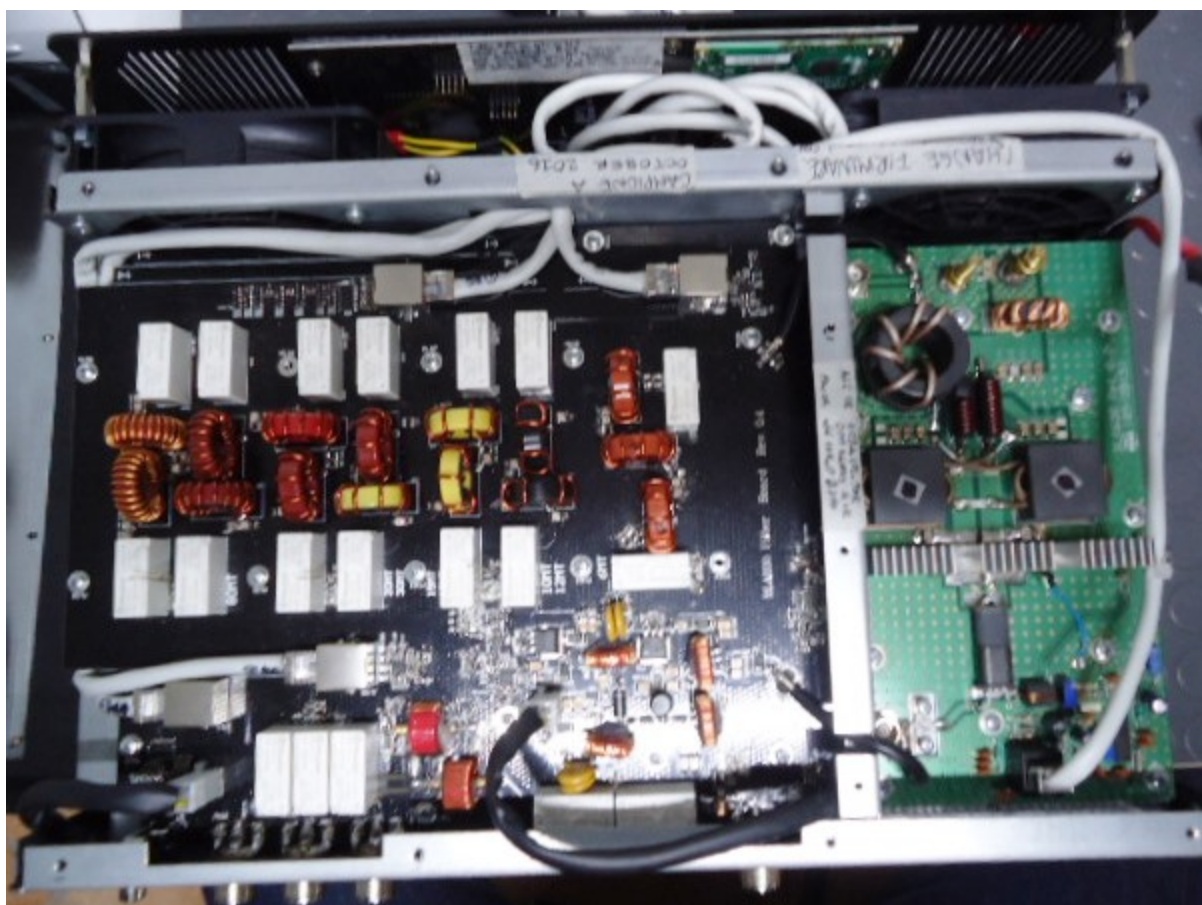
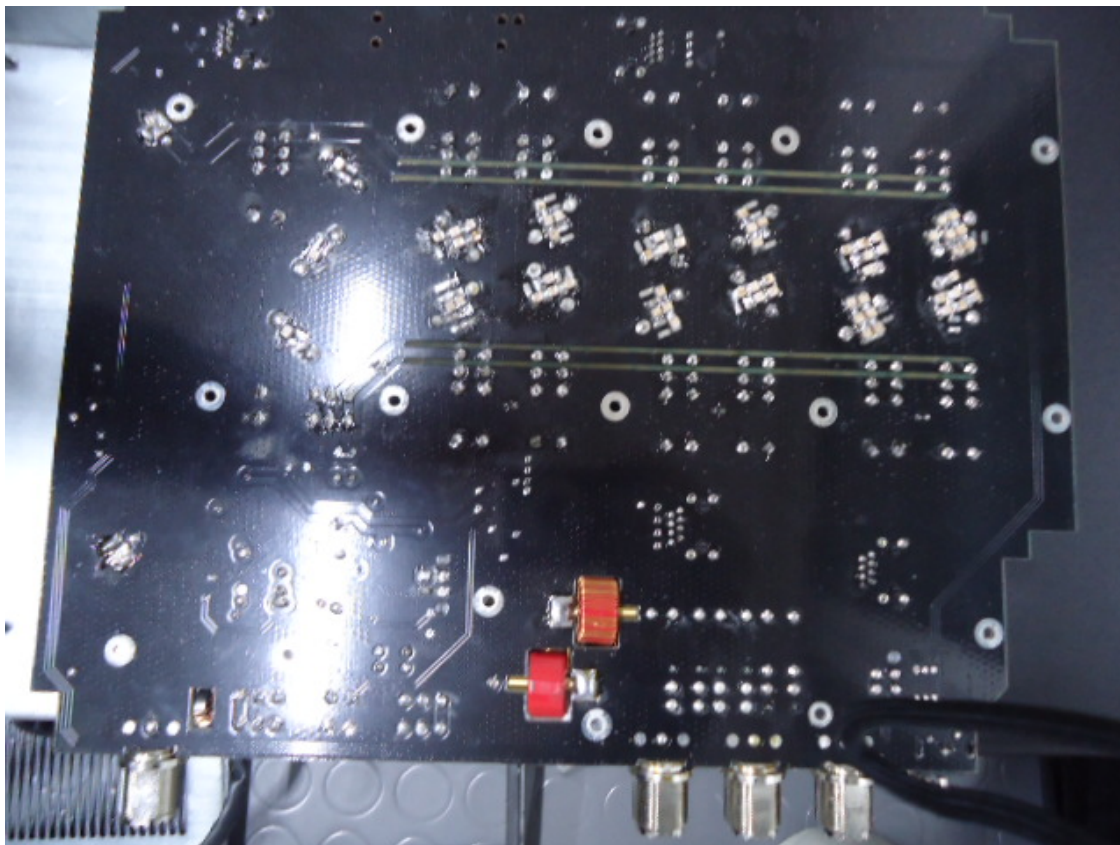


TOP view of internal BLA 600 RF amplifier;
On the upper side the main control and display board; on the left side the RF output filter board; on the right side the RF amplifier board.

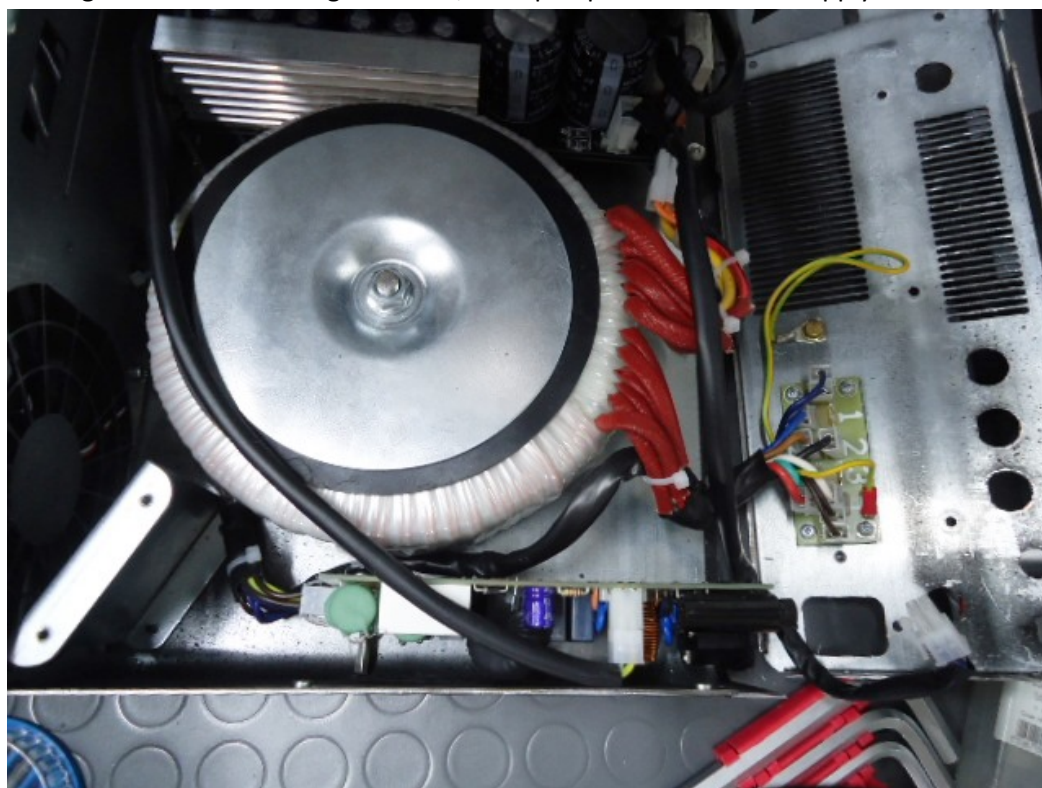


TOP view of internal BLA 600 RF amplifier,
on left side the RF amplifier board, on right side the RF output filter board
On the below photo the bottom side of RF output filter board.

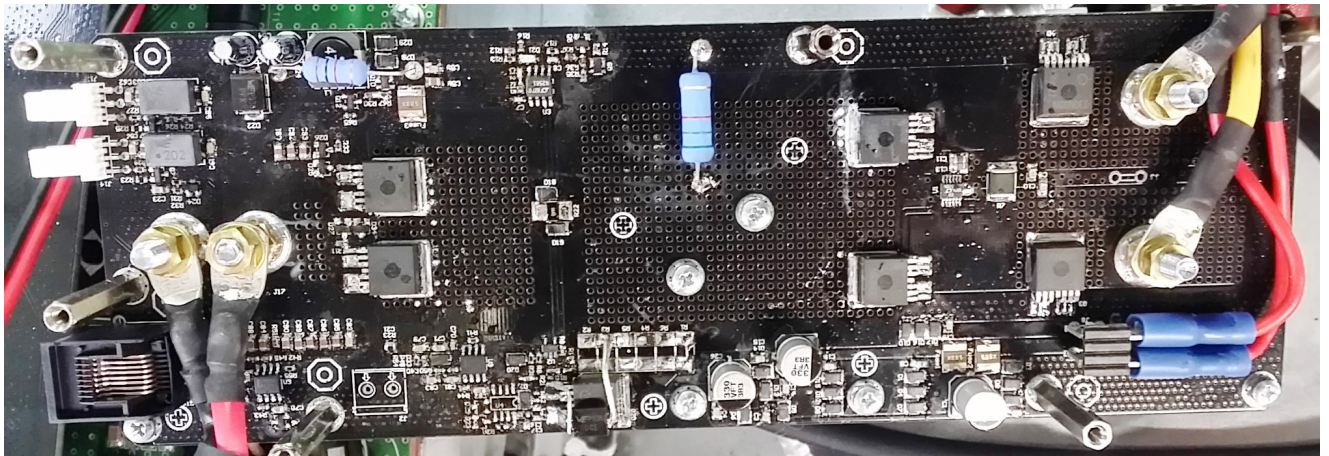




View of down side of internal BLA 600 RF amplifier;
on the bottom side is placed the EMI filter, in the centre the toroidal power transformer,
on right side the AC voltage selector, on top of photo the Power supply board.



View of down side of internal BLA 600 RF amplifier;
Near to the toroidal power transformer the top side of power supply board;
in the below photo the bottom side of supply board



View of internal side of the frontal panel of BLA 600 RF amplifier;
In the left photo the AC mains switch with his PCB support, in the right photo the single parts not assembled.

