

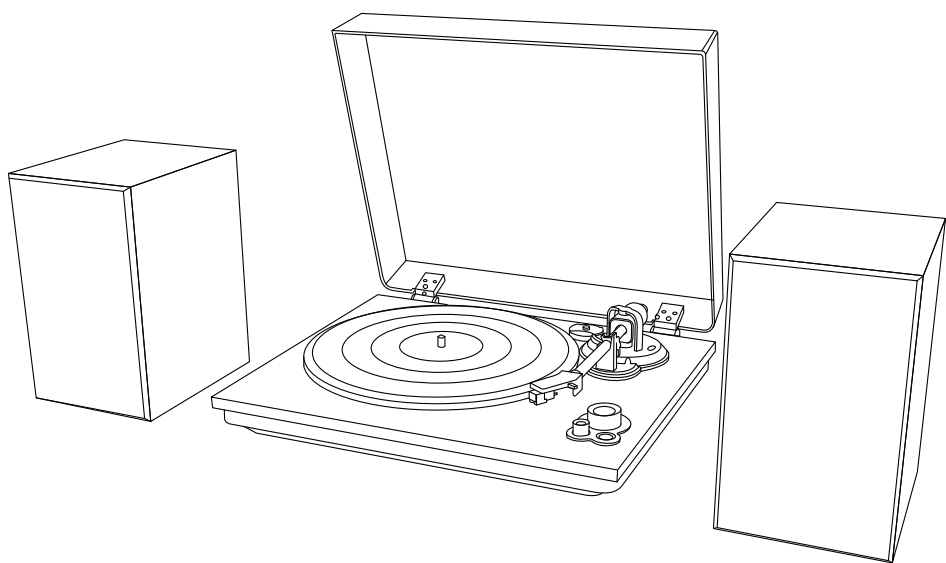
尺寸:142x210mm

材质:157g彩印、骑马钉装订





GLENCREAG



## USER MANUAL

# VINYL RECORD PLAYER

\*Please read the instructions before use and keep for future reference.

# SAFETY INSTRUCTION

---

1. Operate this product only with the type of power source indicated on the marking label or in this instruction manual.
2. Do not overload wall outlets, extension cords, or built-in convenience outlets, as this can pose a fire or electric shock risk.
3. Protect the power cord from being walked on or pinched, especially at plugs, convenience outlets, and where it exits the product.
4. Avoid using this product near water or in damp environments.
5. Keep the product away from heat sources such as radiators, heat registers, stoves, or other equipment (including amplifiers) that generate heat.
6. Never allow any liquid to spill on the product.
7. Use only attachments recommended by the manufacturer, as others may pose hazards.
8. Do not attempt to service this product yourself; opening or removing covers may expose you to dangerous voltage or other hazards. Refer all servicing to qualified personnel.
9. Move product and cart combinations with care. Quick stops, excessive force, and uneven surfaces may cause them to overturn.
10. Slots and openings in the cabinet are for ventilation to ensure reliable operation and prevent overheating. Do not block or cover these openings, and maintain at least 5 cm of space around the product for adequate ventilation.
11. Unplug the product during a lightning storm or when it will not be used for an extended period.

# FCC CAUTION

---

## FCC caution

This device complies with part 15 of the FCC Rules. Operation is subject to the following two conditions: (1) This device may not cause harmful interference, and (2) this device must accept any interference received, including interference that may cause undesired operation.

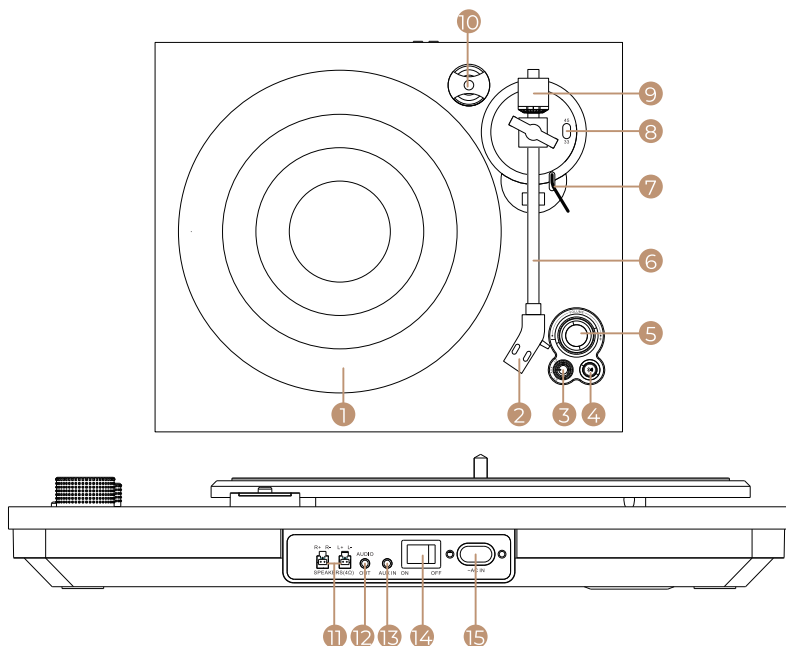
Any Changes or modifications not expressly approved by the party responsible for compliance could void the user's authority to operate the equipment.

**Note:** This equipment has been tested and found to comply with the limits for a Class B digital device, pursuant to part 15 of the FCC Rules. These limits are designed to provide reasonable protection against harmful interference in a residential installation. This equipment generates uses and can radiate radio frequency energy and, if not installed and used in accordance with the instructions, may cause harmful interference to radio communications. However, there is no guarantee that interference will not occur in a particular installation. If this equipment does cause harmful interference to radio or television reception, which can be determined by turning the equipment off and on, the user is encouraged to try to correct the interference by one or more of the following measures:

- Reorient or relocate the receiving antenna.
- Increase the separation between the equipment and receiver.
- Connect the equipment into an outlet on a circuit different from that to which the receiver is connected.
- Consult the dealer or an experienced radio/TV technician for help.

This equipment complies with FCC radiation exposure limits set forth for an uncontrolled environment. This equipment should be installed and operated with minimum distance 20cm between the radiator & your body.

# PRODUCT INFORMATION



- ① Platter
- ② Stylus cartridge
- ③ BT(Bluetooth)/AUX-IN/LP(PHONO) function switch
- ④ Bluetooth status light/Bluetooth transmit button
- ⑤ Volume control button (Rotate to turn up and turn down)  
Turn on/off button (Short press to turn on and turn off)
- ⑥ Tonearm
- ⑦ Lift lever
- ⑧ 33/45 RPM switch
- ⑨ Tonearm counterweight
- ⑩ 45 RPM adapter
- ⑪ L/R speaker output interface
- ⑫ Audio-out output interface (3.5 mm jack)
- ⑬ Aux-in input interface
- ⑭ Power on/off
- ⑮ Power input

## WHAT'S IN BOX

---

Record player ×1

Power cord ×1

User manual ×1

## SPECIFICATION

---

### Turntable

Power Consumption: AC 100-240V, 50/60Hz

Voltage: ≈60W

Turntable Speed: 33 RPM, 45 RPM

Turntable Dimension: L420 x W350 x H110 mm

Pre-Mounted Moving Magnet Cartridge: AT-3600L

Standby state: Automatically enters standby mode after 15 minutes of inactivity

### Speaker

Output Power: 2x30W

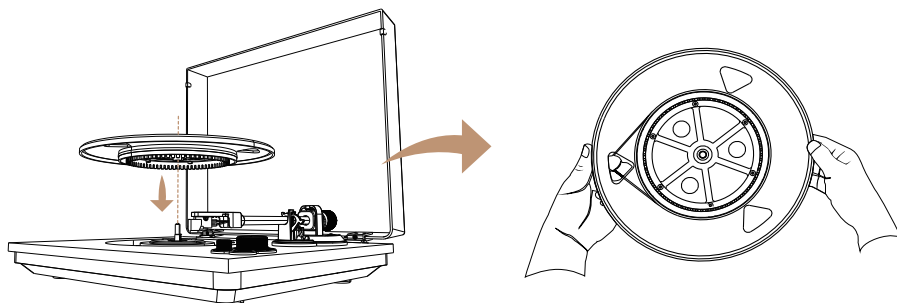
Wooden box dimension: L158 x W190 x H 248 mm

## INSTALLATION BEFORE USE

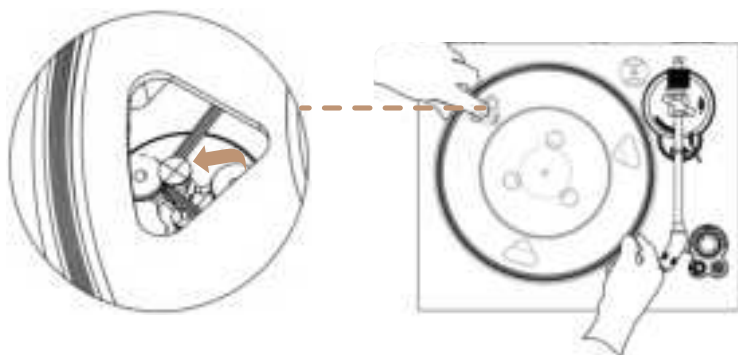
---

Step 1: Remove the platter and slip mat from the accessory packaging.

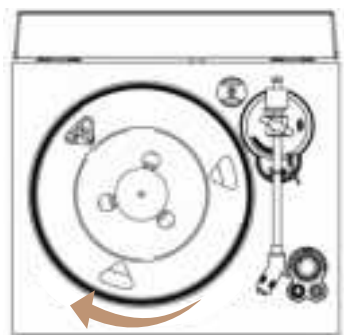
Step 2: Using your fingers, lift and hold the belt on the platter, then align the center spindle and gently place the platter onto the turntable.



Step 3: Slowly rotate the platter until the triangular hole aligns with the drive motor position. At this point, loop the belt over the motor pulley.



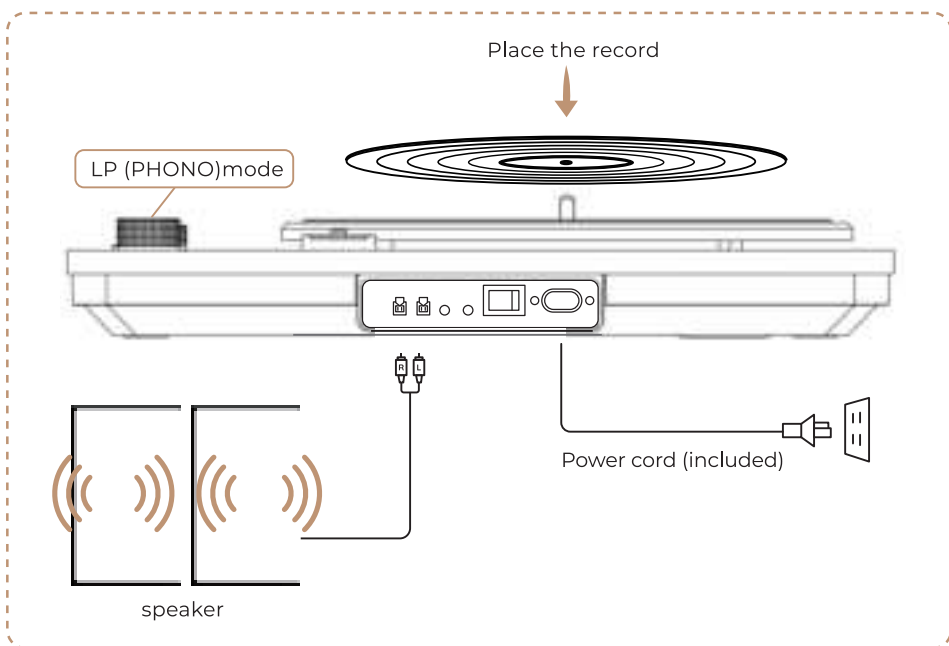
Step 4: Gently rotate the platter to ensure the belt is smoothly connected to the platter's drive rim, completing the belt installation.



Step 5: Before playing a record, place the slip mat on the platter.

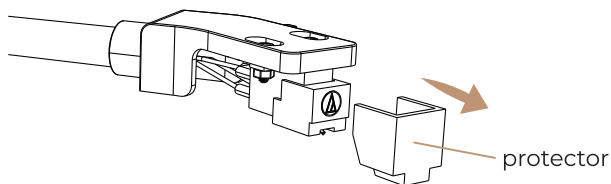
## HOW-TOS

### • Play a record (PHONO mode)



Step 1: Connect the power cord and switch the power to the "ON" position. Then, short press the "Turn on/off" button to power on the record player.

Step 2: Carefully remove the stylus protector.





**Note:**

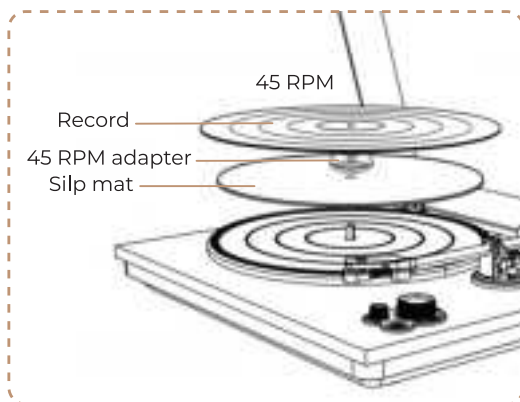
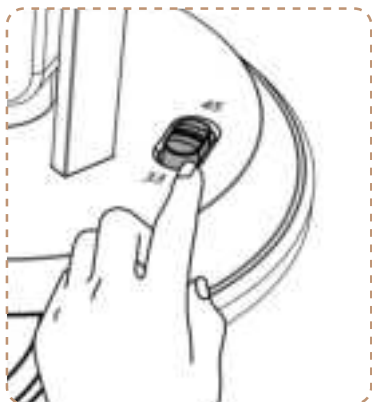
- Pull the protector straight out. Using the wrong direction of force may cause the stylus to detach. If the stylus is detached or about to detach, only low volume will be output.

Step 3: Rotate the Mode Button to select LP (PHONO) mode.

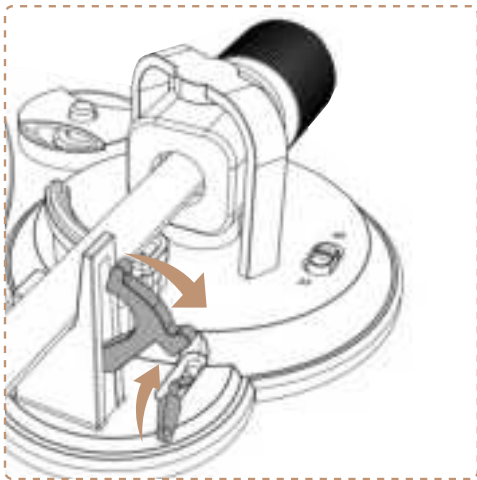
Step 4: Place the record on the slip mat.

**Note:**

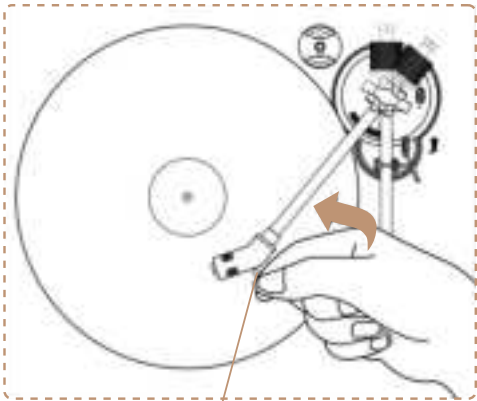
- For 45 RPM records, first select the 33/45 RPM switch to 45 RPM, then place the 45 RPM adapter on the center spindle, and then place the record on the platter.
- The RPM is typically indicated on the record sleeve or label.



Step 5: Unlock the tonearm clip and lift the tonearm using the lift lever.



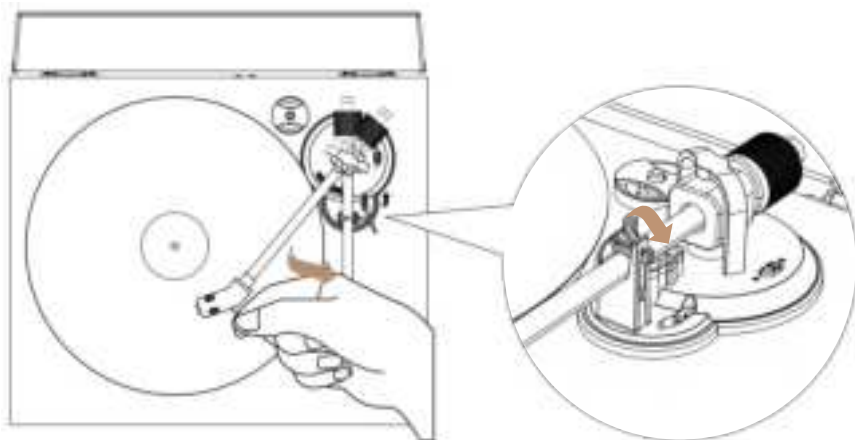
Step 6: Position the tonearm over the desired groove on the record and gently lower it.



Tonearm handle

Step 7: Adjust the volume as needed.

Step 8: To stop playback or when the record has finished, lift the tonearm and return it to the arm clip.

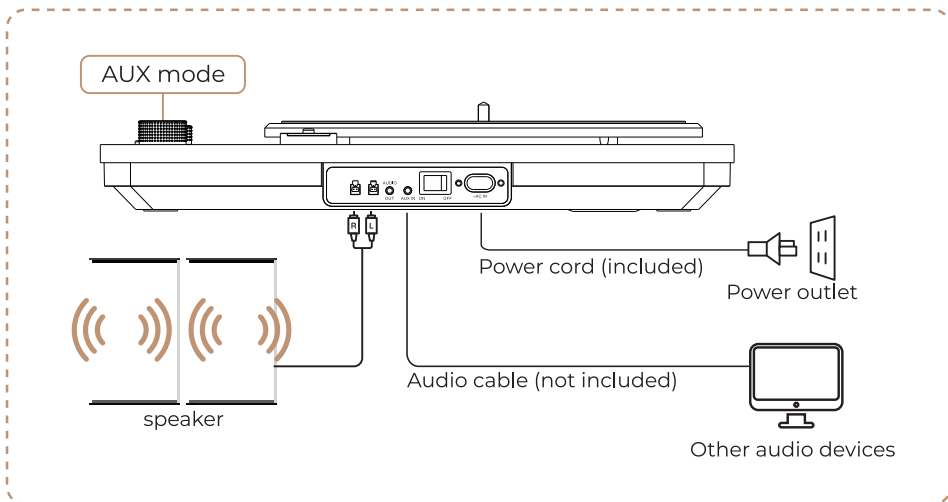


**Note:**

- If the slip mat collects dust, it may scratch the record. Please clean it periodically.
- Always remove the record after use to prevent scratches and warping.

## • Aux-in Function (AUX mode)

This unit allows you to connect other audio devices (such as mobile phones, tablets, computers, etc.) to the record player. This allows you to play music from these devices through the record player's sound system.

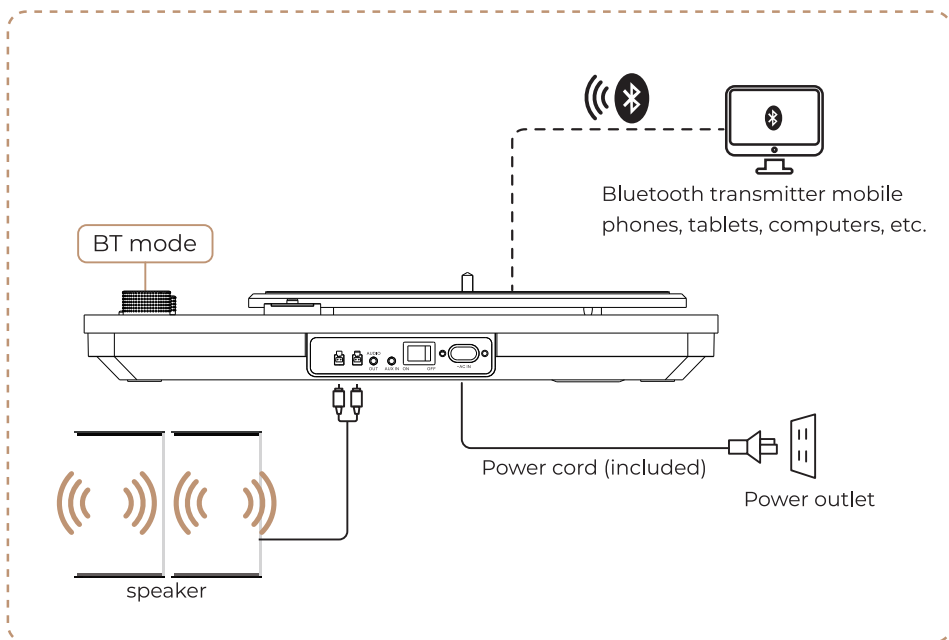


Step 1: Connect the power cord and switch the power to the "ON" position. Then, short press the "Turn on/off" button to power on the record player.

Step 2: Turn the Mode Button to select AUX mode.

Step 3: Insert the audio input cable into the "AUX IN" interface to play music from the external audio devices.

## • Bluetooth receiver/ Bluetooth input (BT mode)



Step 1: Connect the power cord and switch the power to the "ON" position. Then, short press the "Turn on/off" button to power on the record player.

Step 2: Turn the Mode Button to select BT mode. The Bluetooth status light will flash to indicate waiting for connection.

### Bluetooth status light:

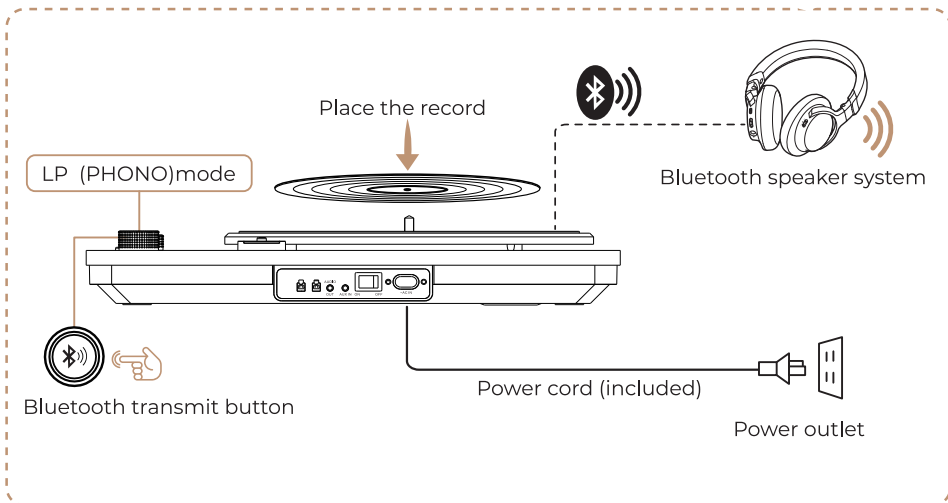
- **Flashing blue: Bluetooth is not connected or connection fails**
- **Steady blue: Bluetooth connection successful**

Step 3: Enable Bluetooth on your media device, search for the pairing name (ATE60), and select "pairing" to connect. Once connected, you can play music from your mobile device through the record player.

**Note:** Supports Bluetooth version 5.0.

## • Bluetooth transmission/ Bluetooth output

This unit features a Bluetooth transmitter function, allowing you to play records and listen wirelessly through an external Bluetooth speaker system. Ensure your external Bluetooth speaker has a built-in Bluetooth receiver (e.g., Bluetooth headphones, speakers, mobile phones, tablets). The effective range is approximately 10 meters.



Step 1: First, switch on your external Bluetooth speaker system.

Step 2: Connect the power cord and switch the power to the "ON" position. Then, short press the "Turn on/off" button to power on the record player.

Step 3: Turn on the turntable and select LP (PHONO) mode. Then, short press the Bluetooth transmit button to enter Bluetooth transmitting mode.

### **Note:**

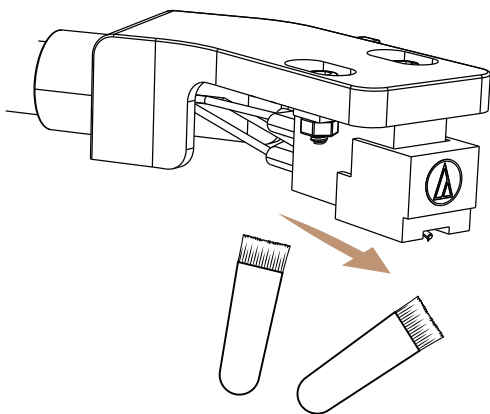
- It may take for about 10s for the first connection.
- A flashing Bluetooth LED indicator means it is searching for an external Bluetooth speaker to pair.

Step 4: Once connected to the external Bluetooth speaker system, the Bluetooth LED indicator will light steadily. You can then begin playback of your records.

## CLEANING AND MAINTENANCE

---

1. It is recommended to install the stylus cover before cleaning or maintenance to prevent damage.
2. If the player will not be used for an extended period, you can remove the drive belt to prevent uneven stretching.
3. When the turntable body is dirty or dusty, first disconnect the AC adapter, then wipe off dirt and dust with a soft, dry cloth.
4. Do not use benzene, thinners, or similar substances.
5. When storing the product for a long period, unplug the AC adapter from the socket and wrap the product in plastic to prevent dust. Do not allow the product to become damp.
6. Stylus Cleaning
  - If there is dirt and grime stuck on the stylus tip, please clean it with a commercially available brush.
  - If the stylus tip is very dirty, we recommend using a stylus cleaner (not included). Clean the stylus tip by moving the brush from the rear to the front of the stylus tip.



# TROUBLE SHOOT

---

## **Turntable Does Not Rotate**

- The power plug is not connected to the power outlet. Please connect it properly.
- The power switch is not turned on. Please turn it to the "ON" position
- The power button is not turned on. Please press and hold the "Turn on/off button" to turn on.

## **Turntable Rotates, But No Sound/Very Low Sound**

- The protective cover on the cartridge is still on. Please remove the protective cover.
- The tonearm is in the lifted position. Please lower it to make contact with the record surface, ensuring it is in the normal playback position.
- The connected device's (amplifier, etc.) function settings and input are not correctly selected. Please check if the connected device's settings are correct.
- Make sure that the L/R speaker interface cables are connected correctly.
- The stylus is damaged or missing. Please inspect the stylus and replace it if necessary.
- The belt at the bottom of the turntable has fallen off. Please check and install it correctly.
- Make sure that the volume is adjusted to the appropriate volume.
- Make sure the function switch is switched to LP mode.

## **Tonearm Stops Moving Midway**

- Make sure that the power cable is connected correctly.
- Make sure that the function switch is switched to LP mode.
- Please ensure no scratches on the record.
- Please ensure no objects obstruct the tonearm.

## **Producing Skips, Harsh Noises, or Distortion**

- Please ensure no scratches on the record.
- Please ensure the record is not warped.
- Please ensure no dirt or dust on the stylus or record.
- Please ensure the stylus is not worn. If necessary, replace the stylus.

## **Produces Howling Sounds**

- The distance between this product and the speakers is too close. Please appropriately distance the speakers away from this product.
- This product is placed in an unstable position. Please place this product on a stable, flat surface.
- The playback volume is too high. Adjust the volume of the connected amplifier to an appropriate level.



### Noise During Playback

- There is dust on the stylus. If dust is stuck on the stylus tip, please clean it with a separately purchased brush.

### Record Plays Too Fast or Too Slow

- The product's speed setting is incorrect. Use the turntable's speed button to select the correct speed for the type of record being played.

## FAQS

---

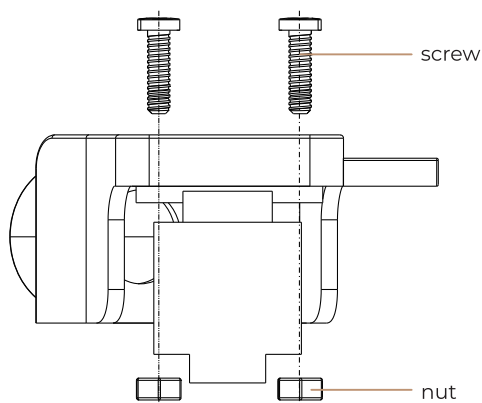
### Q: How to Replace the Cartridge?

A: Please replace the cartridge according to the following steps.

Step 1: Using needle-nose pliers or tweezers to hold the nut, then use an allen wrench to loosen the screw.

#### Note:

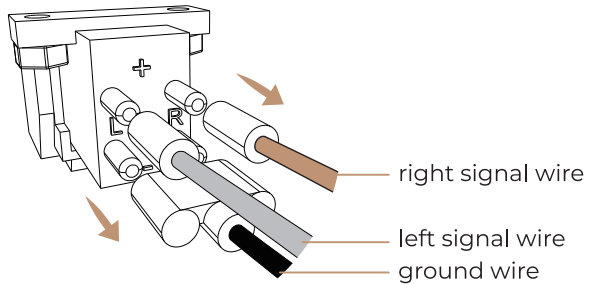
If you want to preserve the removed cartridge in good condition, make sure to install the stylus protector to avoid damaging the stylus during the process.



Step 2: Use hand or tweezers to disconnect the left and right signal wires and the ground wire.

**Note:**

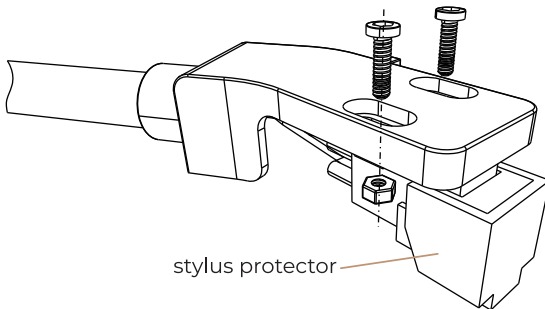
Remember the corresponding positions of each wire to avoid incorrect connections during installation.



Step 3: Install the new cartridge, correctly connect the left and right signal wires and the ground wire. Hold the nut in place and secure the screw.

**Note:**

When installing the new cartridge, ensure the stylus protector is properly installed to avoid damaging the stylus during the process.





## **After-sales Service**

All GLENCREAG products are covered by a 2-year warranty.

If you encounter quality problems or use problems with your GLENCREAG products,  
please contact us via [support@glencreag.com](mailto:support@glencreag.com).

We will reply within 48 hours.

Official website: <https://glencreag.com>.