

Directory

USB Client User Manual

Before You Start.....	2
Software Installation.....	3
Hardware Installation.....	5
Configuration.....	7
Regulatory Statement.....	9

USB Client User Manual

Please follow the procedure to use this manual.

Before You Start

Please check USB client package content:

- A USB Client
- A Stand
- A USB Client driver

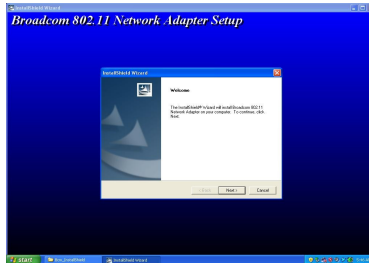


Install software before hardware installation.

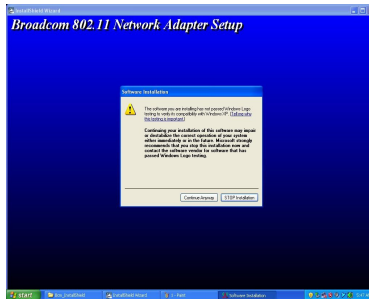
Software Installation

Insert the CD-ROM, and it auto-runs. You need to install the software before hardware installation.

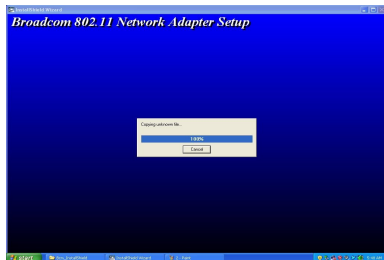
Click “Next” to continue the installation.



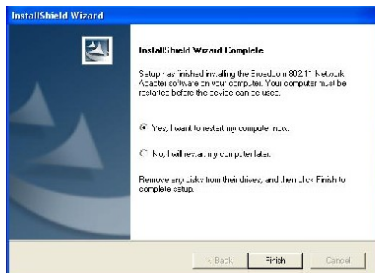
Click “Continue Anyway” to continue the setup.



After you click “Next”, the system will start to install the program as the following picture shows.



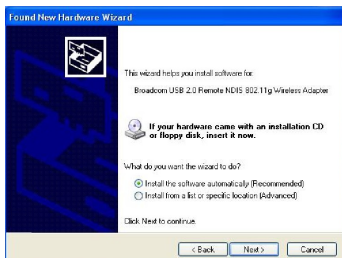
Click “Finish” to complete the installation.



Hardware Installation

Please plug the USB client to the Stand socket and the other end of the Stand cable to the USB socket of your computer.

For Windows XP users, the system detects a new device when you plug the cable into the USB socket. Just follow the system's instruction to add a new device.



The system will show a Hardware Installation dialog window. Please click “Continue Anyway” to continue the installation.



After the steps, please click “Finish” to complete the installation.

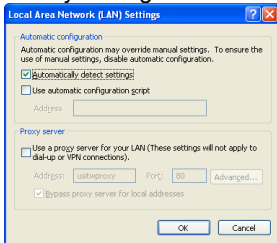


Configuration

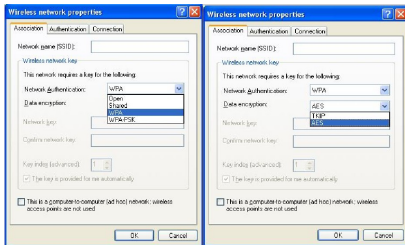
To connect the wireless network, please do the following steps:


1. Cancel your browser's proxy setting.

Open your browser and click Tool → Internet Options → Connections → LAN Settings → Unpick Proxy setting as the following figure shows.

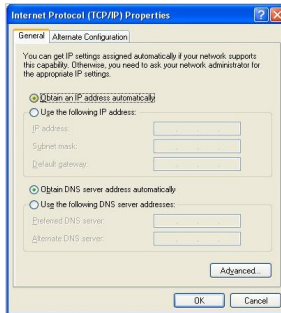


2. Change your network setups. Select “WPA” and “AES”.



Move the cursor to  and double click the mouse → Click “Property”
→ double click Wireless Networks → select “WPA” and “AES”.

2. Change your TCP/IP setups. Tick “Obtain an IP address automatically” and “Obtain DNS server address automatically”.



Go back to Internet Protocol (TCP/IP) and double click → tick “Obtain an IP address automatically” and “Obtain DNS server address automatically”.

3. After both software and hardware installation, your USB Client connects wireless network automatically.

Regulatory Statement

Technical Support

Universal Scientific Industrial Co., Ltd.

Address : 141, Lane 351, Taiping Road, Sec. 1, Tsao Tuen,
Nan-Tou, Taiwan

Tel : + 886-49-2350876, 2325876

Fax : +886-49-2329561, 2337360

E-mail : usi@ms.usi.com.tw

Technical Support in the US

Address : 3590 Peterson Way, Santa Clara, CA 95054, USA

Tel : +1-408-986-6589

Fax : +1-408-432-0440

E-mail : alex_lee@ms.usi.com.tw ; altliao@ms.usi.com.tw

Federal Communication Commission Interference Statement

This equipment has been tested and found to comply with the limits for a Class B digital device, pursuant to Part 15 of the FCC Rules. These limits are designed to provide reasonable protection against harmful interference in a residential installation. This equipment generates, uses and can radiate radio frequency energy and, if not installed and used in accordance with the instructions, may cause harmful interference to radio communications. However, there is no guarantee that interference will not occur in a particular installation. If this equipment does cause harmful interference to radio or television reception, which can be determined by turning the equipment off and on, the user is encouraged to try to correct the interference by one of the following measures:

- Reorient or relocate the receiving antenna.
- Increase the separation between the equipment and receiver.
- Connect the equipment into an outlet on a circuit different from that to which the receiver is connected.
- Consult the dealer or an experienced radio/TV technician for help.

This device complies with Part 15 of the FCC Rules. Operation is subject to the following two conditions: (1) This device may not cause harmful interference, and (2) this device must accept any interference received, including interference that may cause undesired operation.

FCC Caution: Any changes or modifications not expressly approved by the party responsible for compliance could void the user's authority to operate this equipment.

IMPORTANT NOTE:

FCC Radiation Exposure Statement:

This equipment complies with FCC radiation exposure limits set forth for an uncontrolled environment. End users must follow the specific operating instructions for satisfying RF exposure compliance.

This transmitter must not be co-located or operating in conjunction with any other antenna or transmitter.

IEEE 802.11b or 802.11g operation of this product in the U.S.A. is firmware-limited to channels 1 through 11.

This equipment has been SAR-evaluated for use in notebook with side slot configuration.