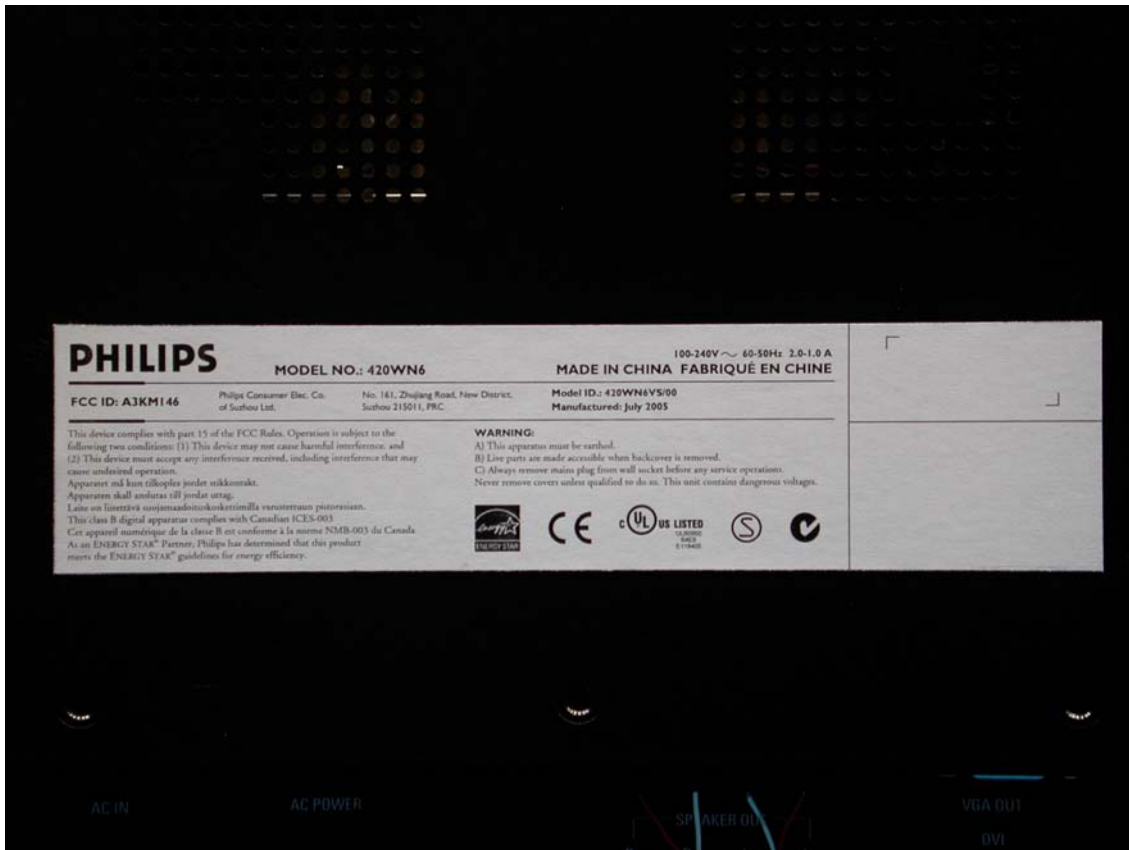


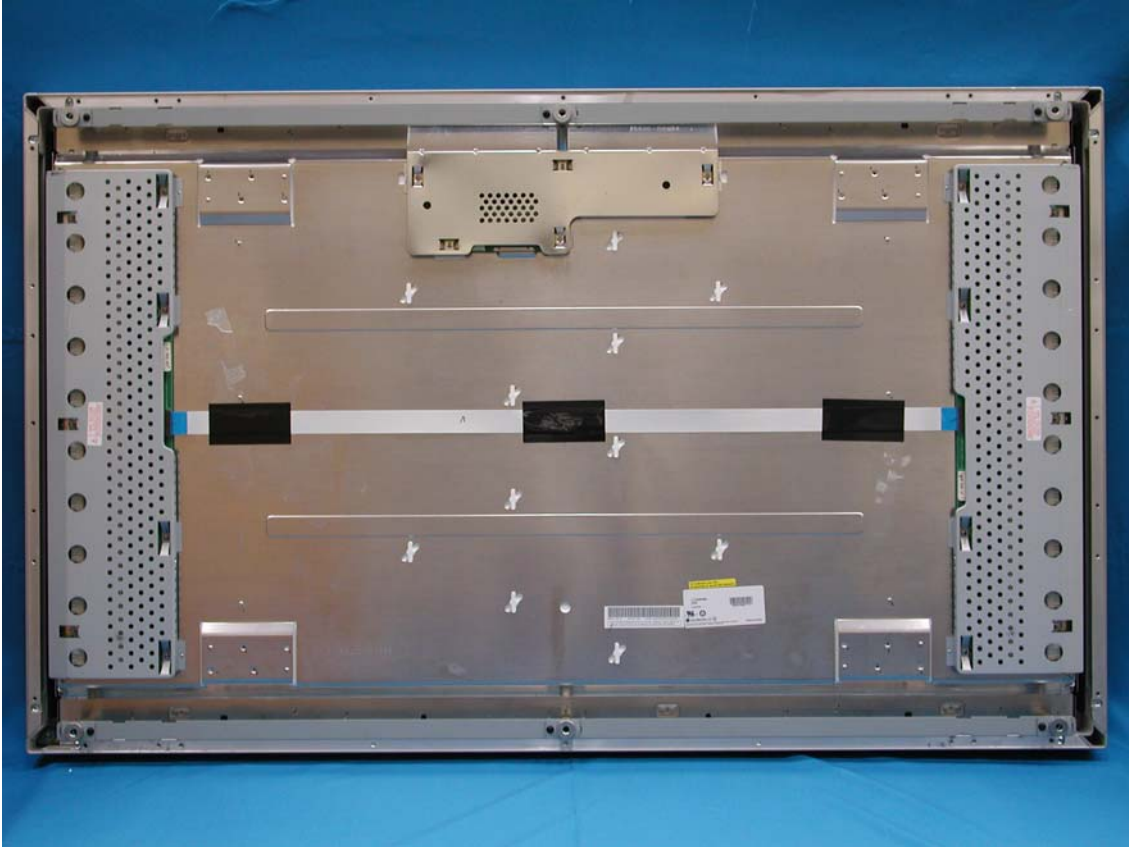
Label



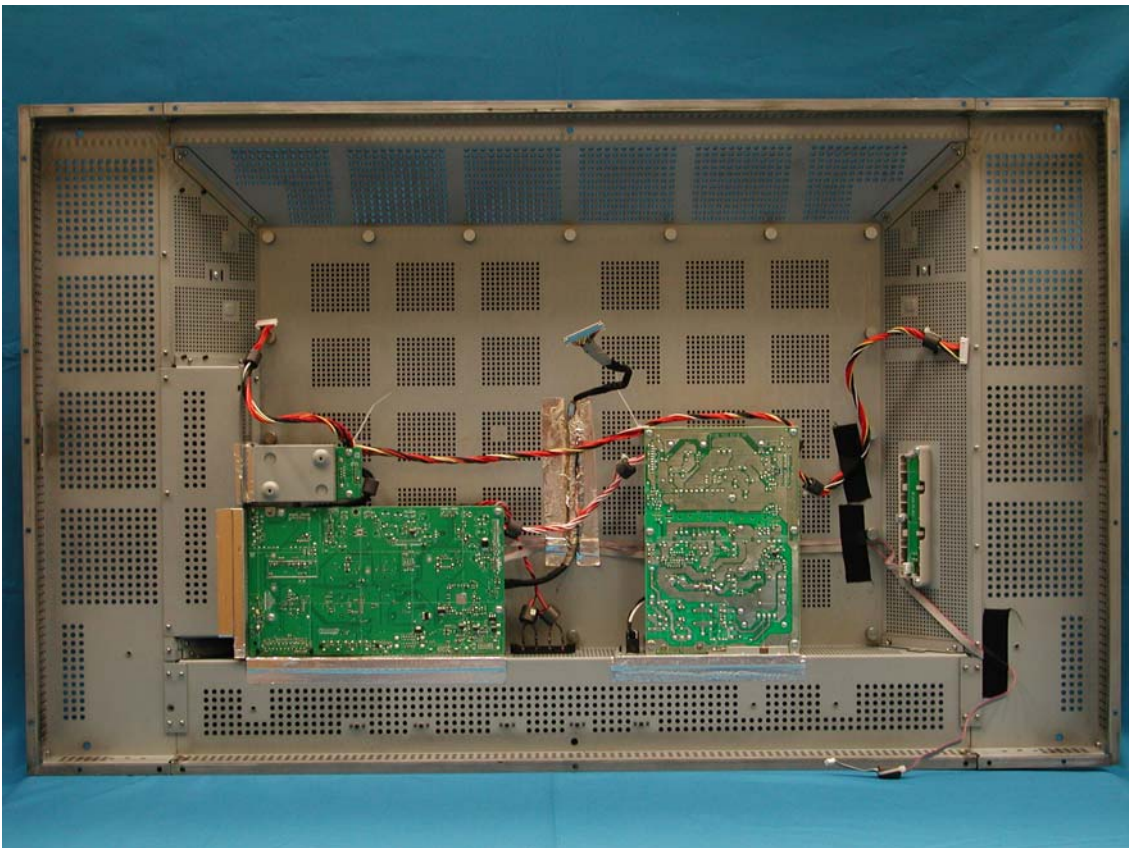
Rear View w/o Base



Rear View w/o Back Cover

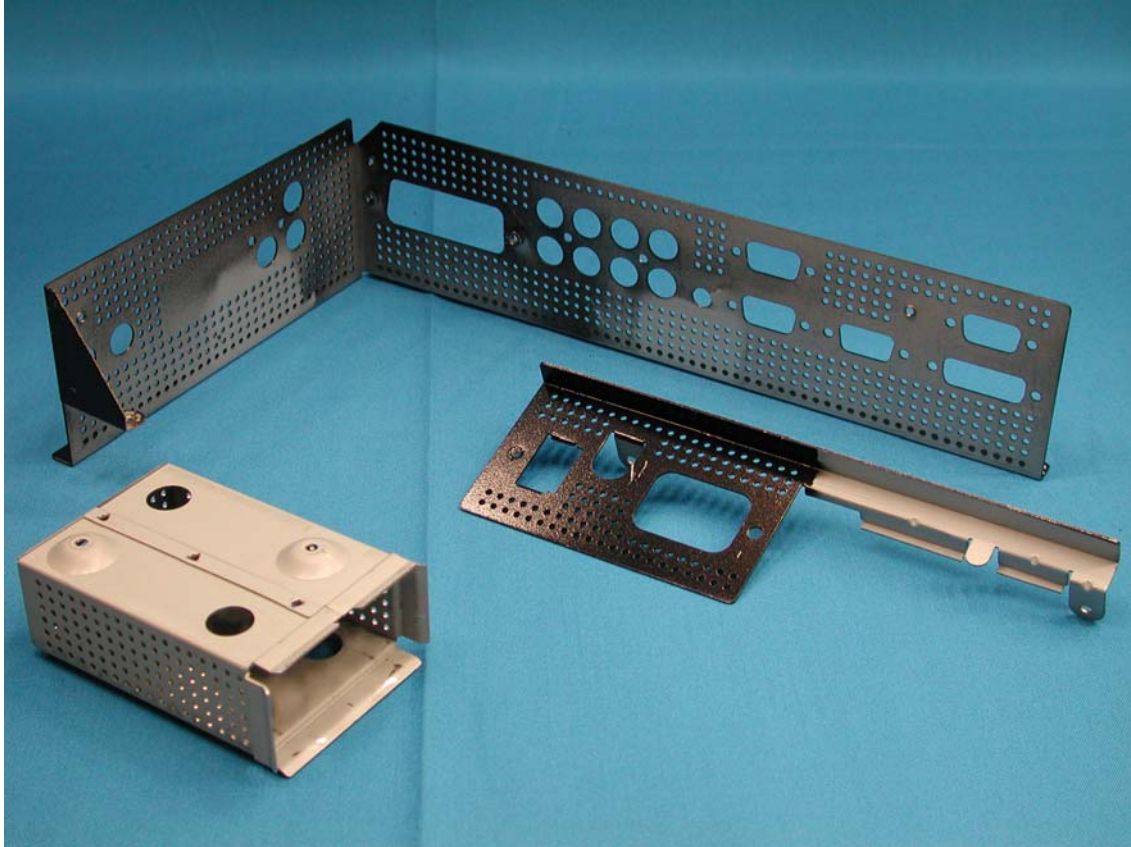


Back cover Assembly with PCB

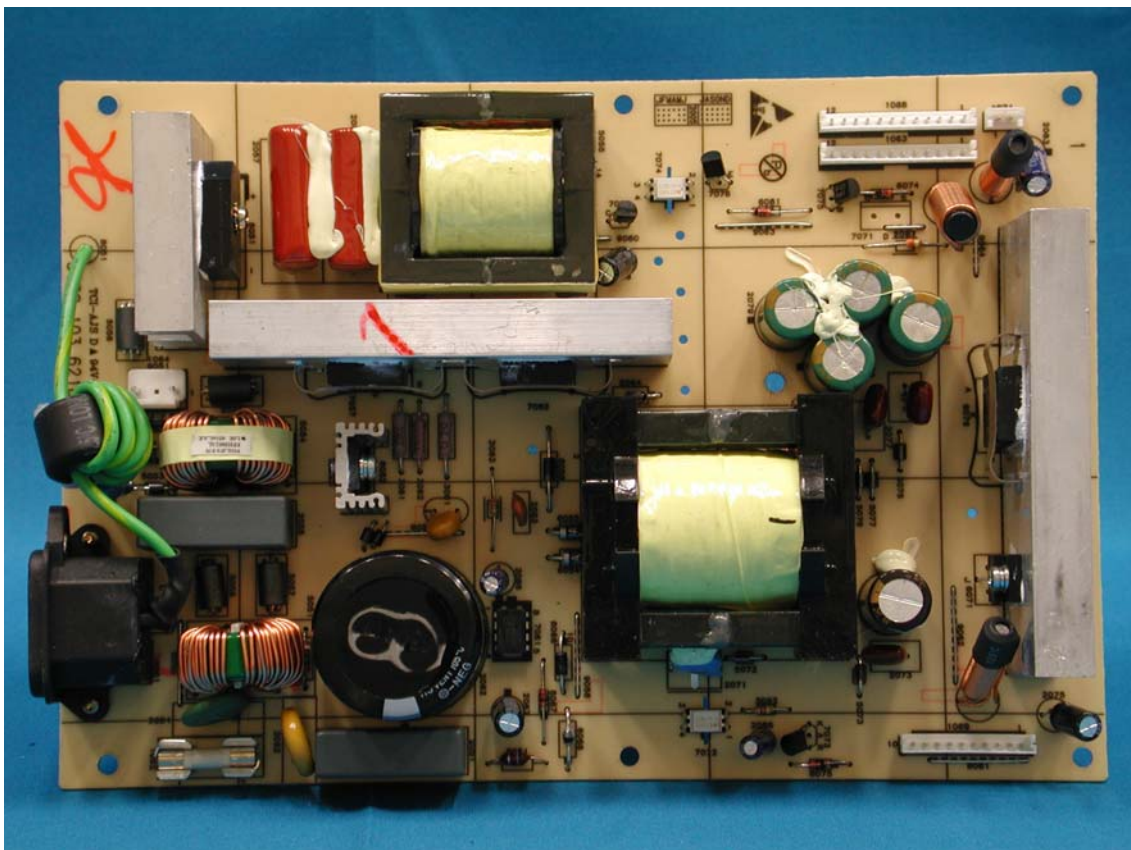




## Shielding

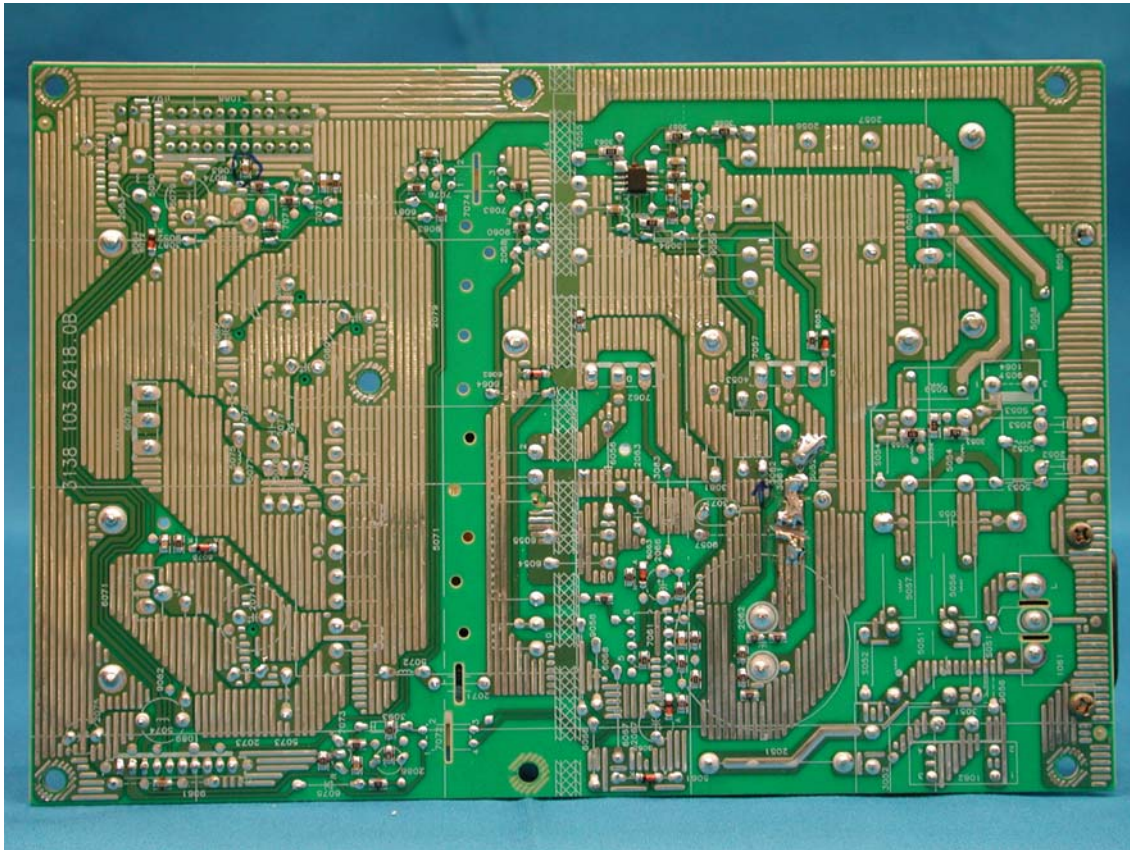


## PCB Layout

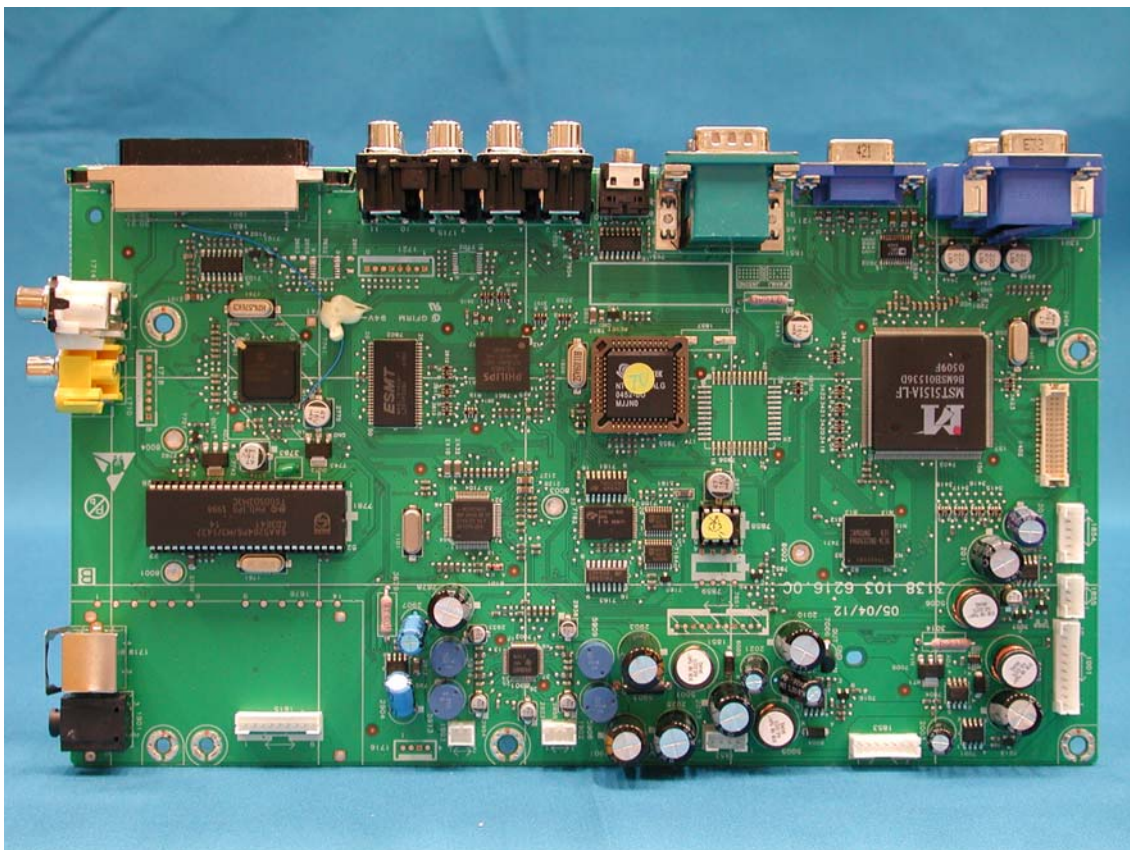




PCB Layout

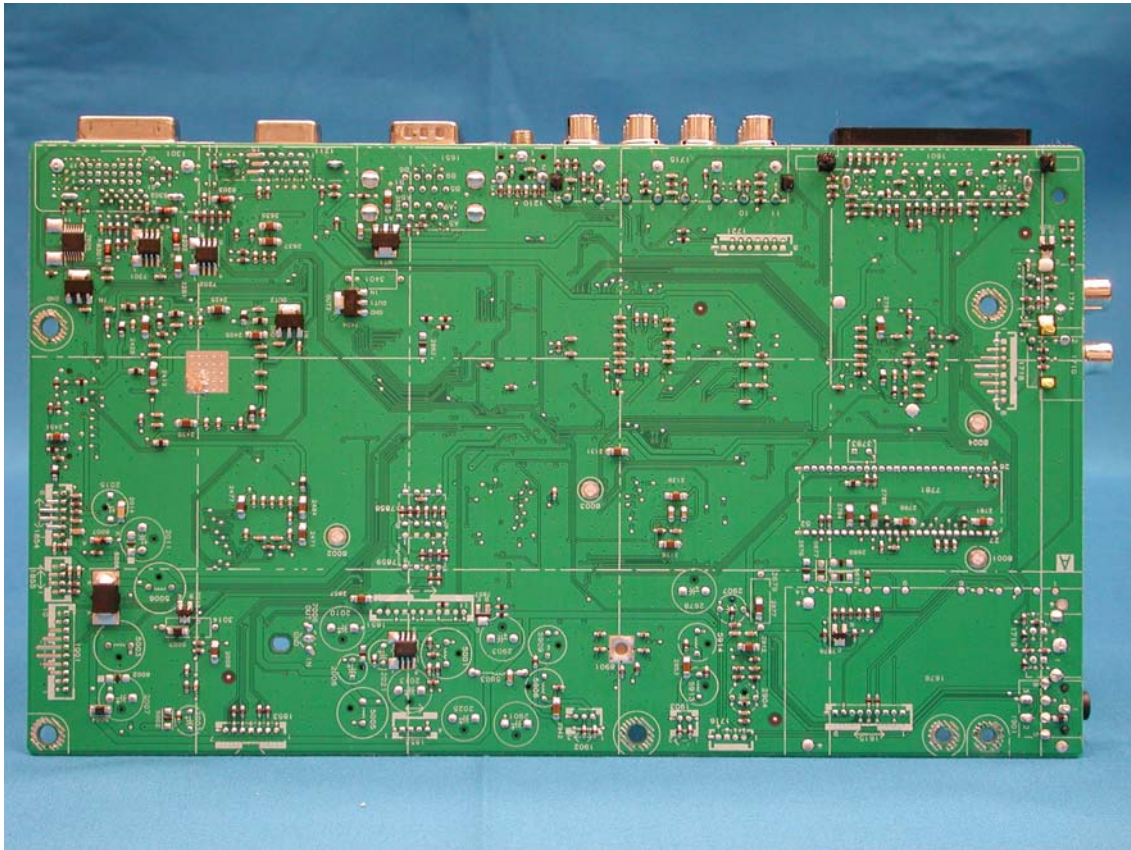


PCB Layout

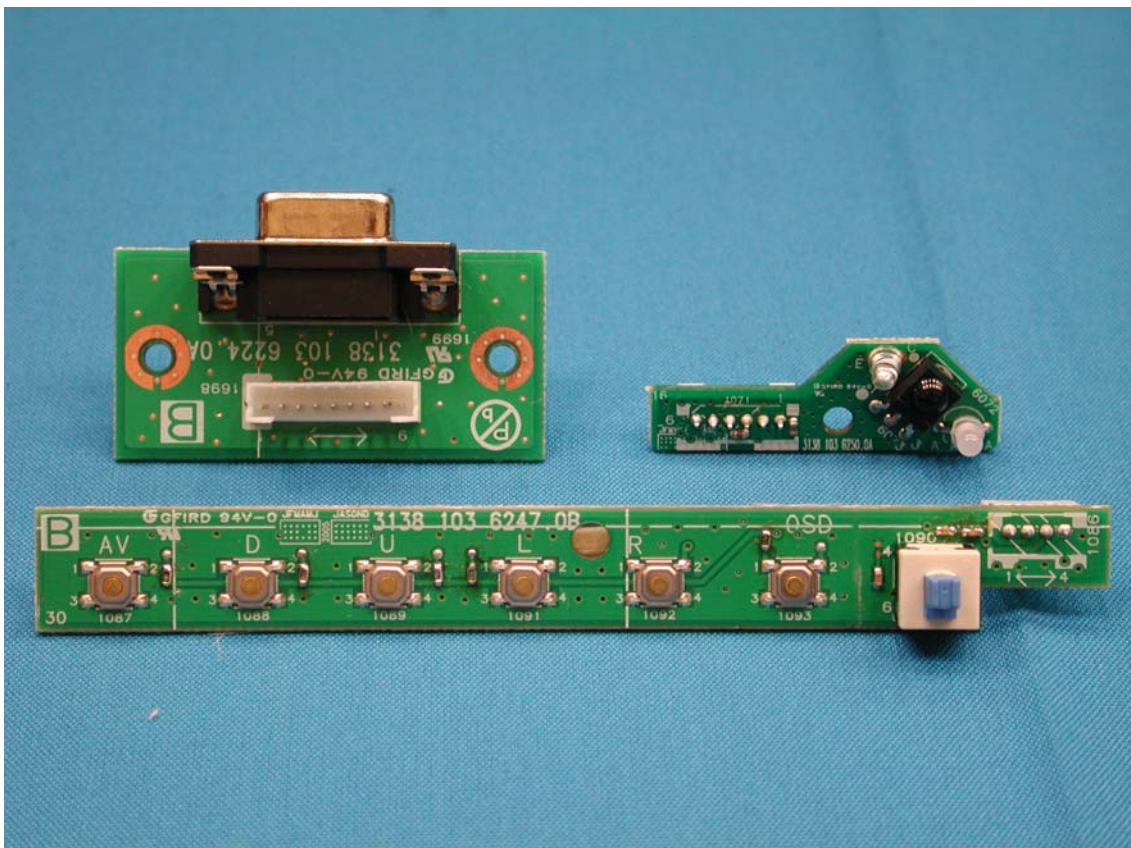




PCB Layout

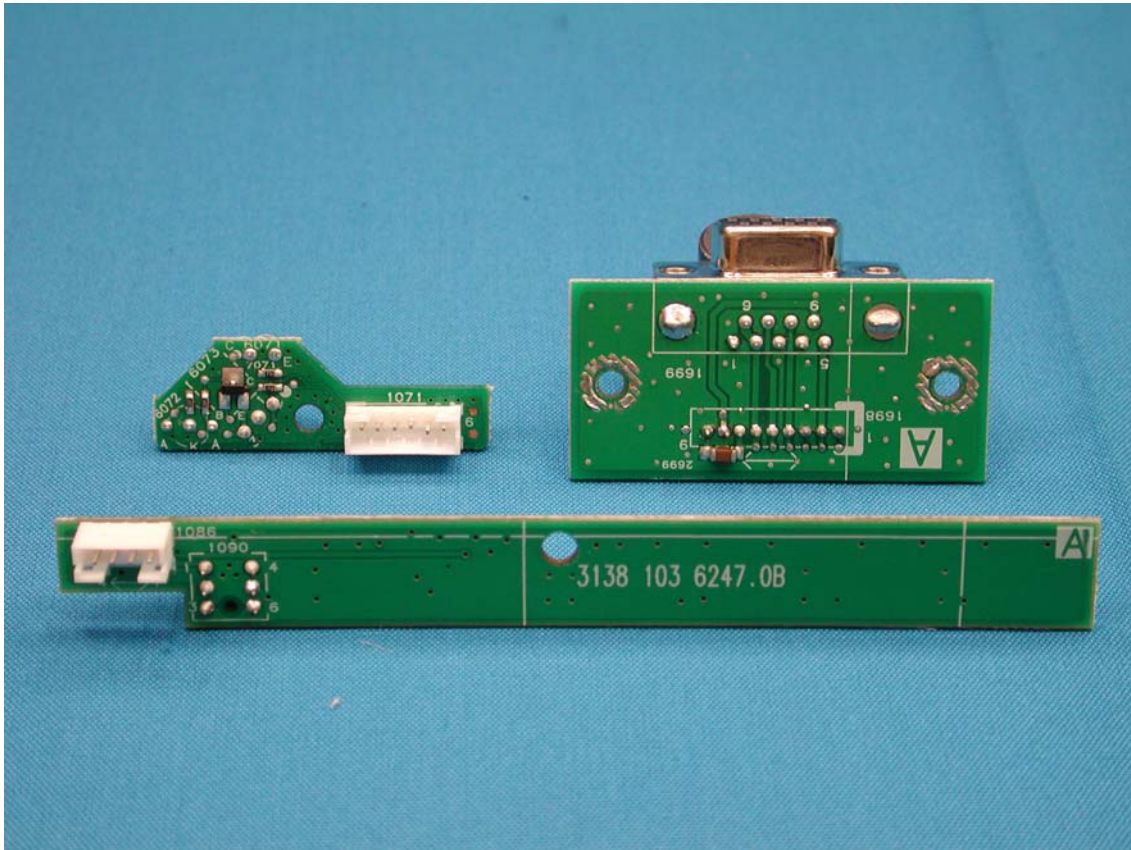


PCB Layout

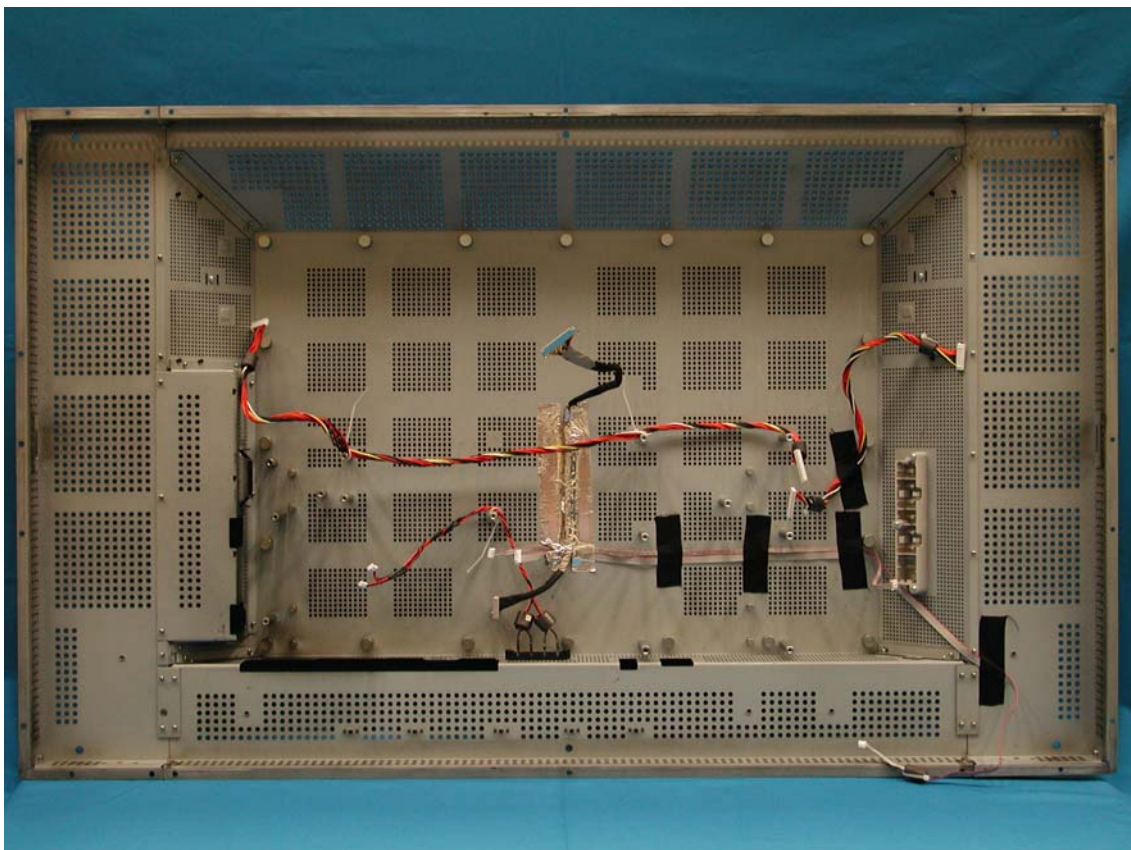




## PCB Layout



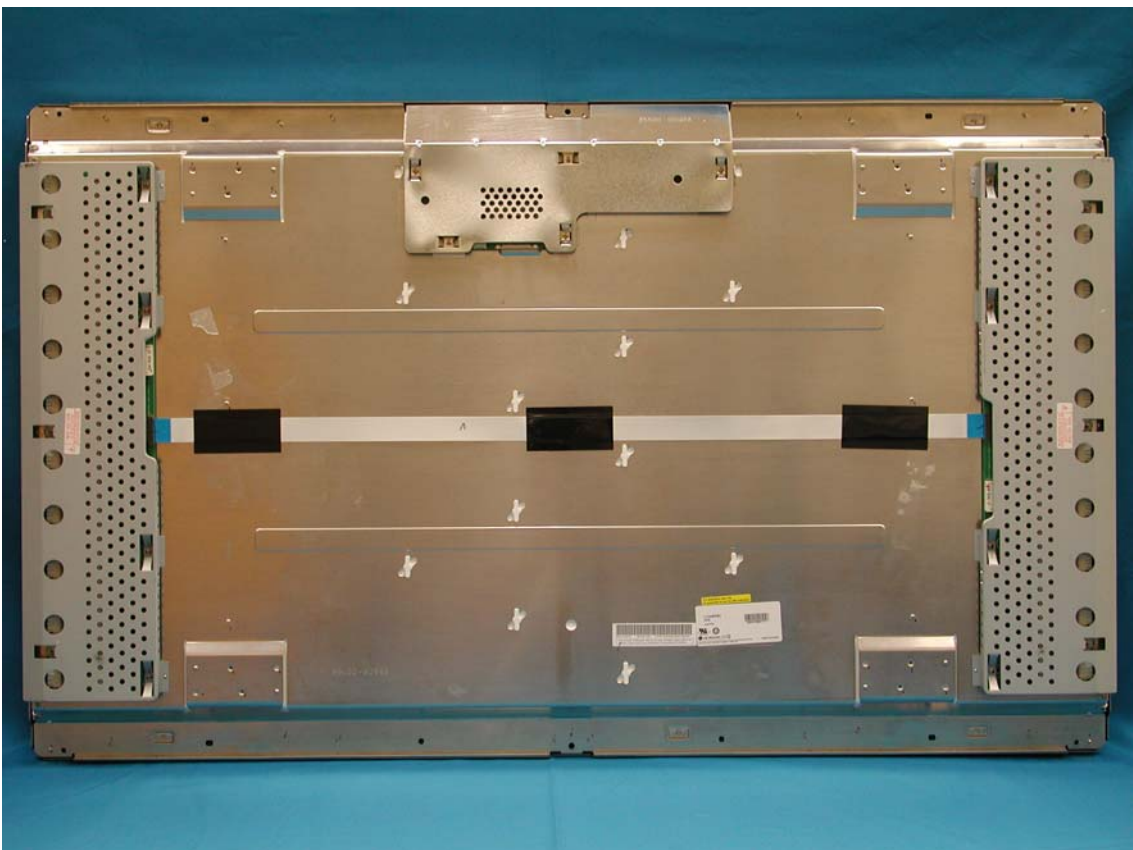
## Back cover Assembly w/o PCB



Plate



LCD Panel





Tuner

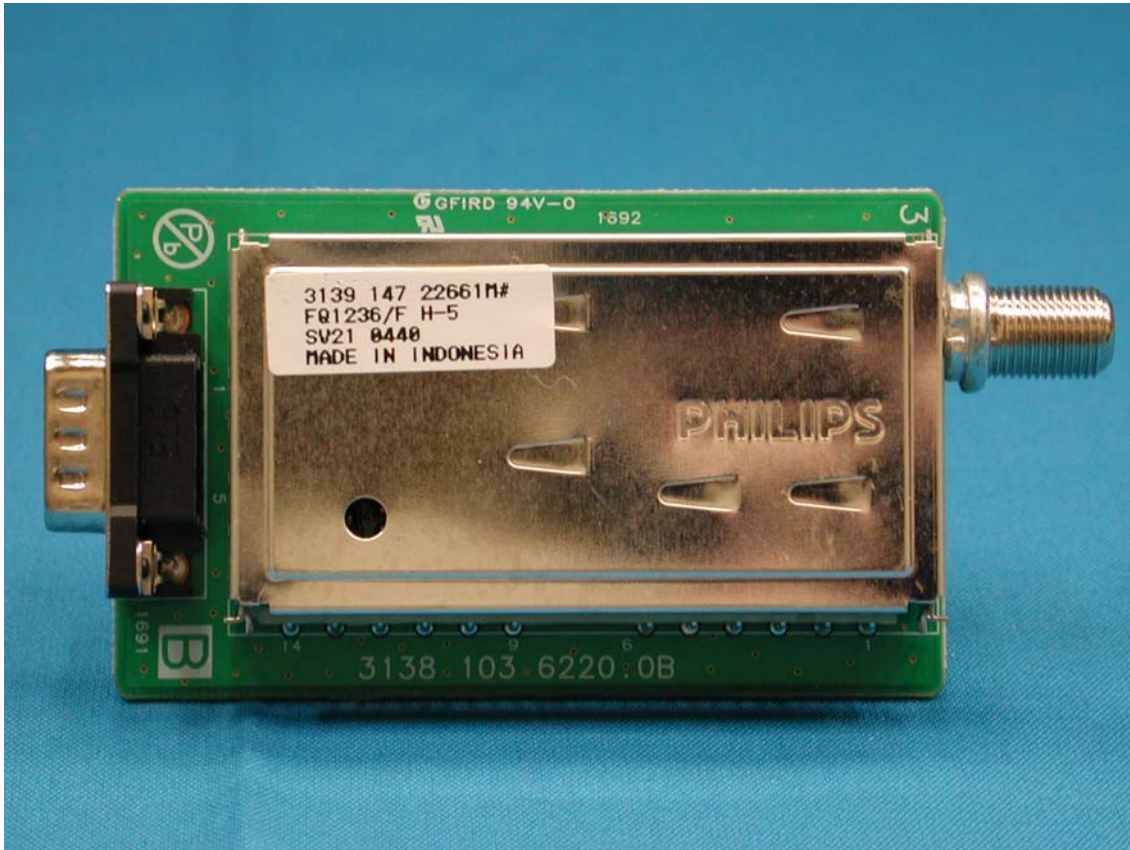


Tuner Assembly

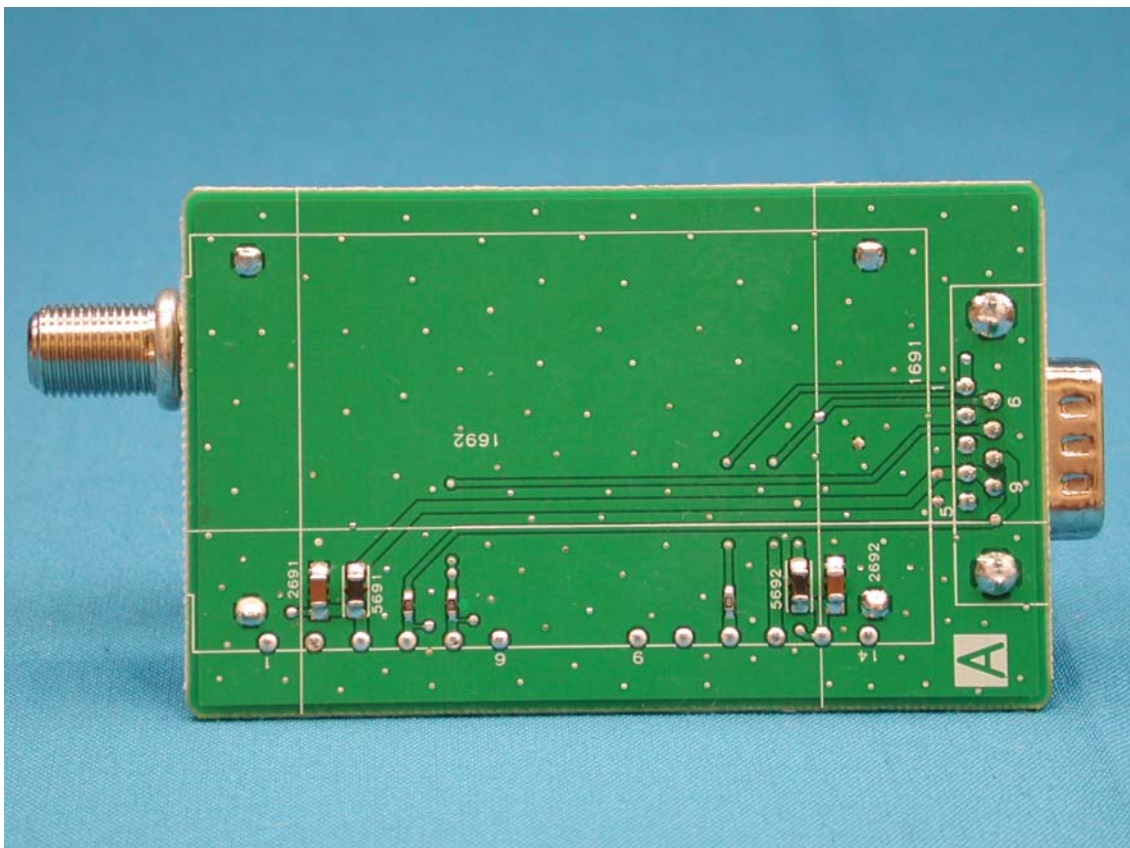




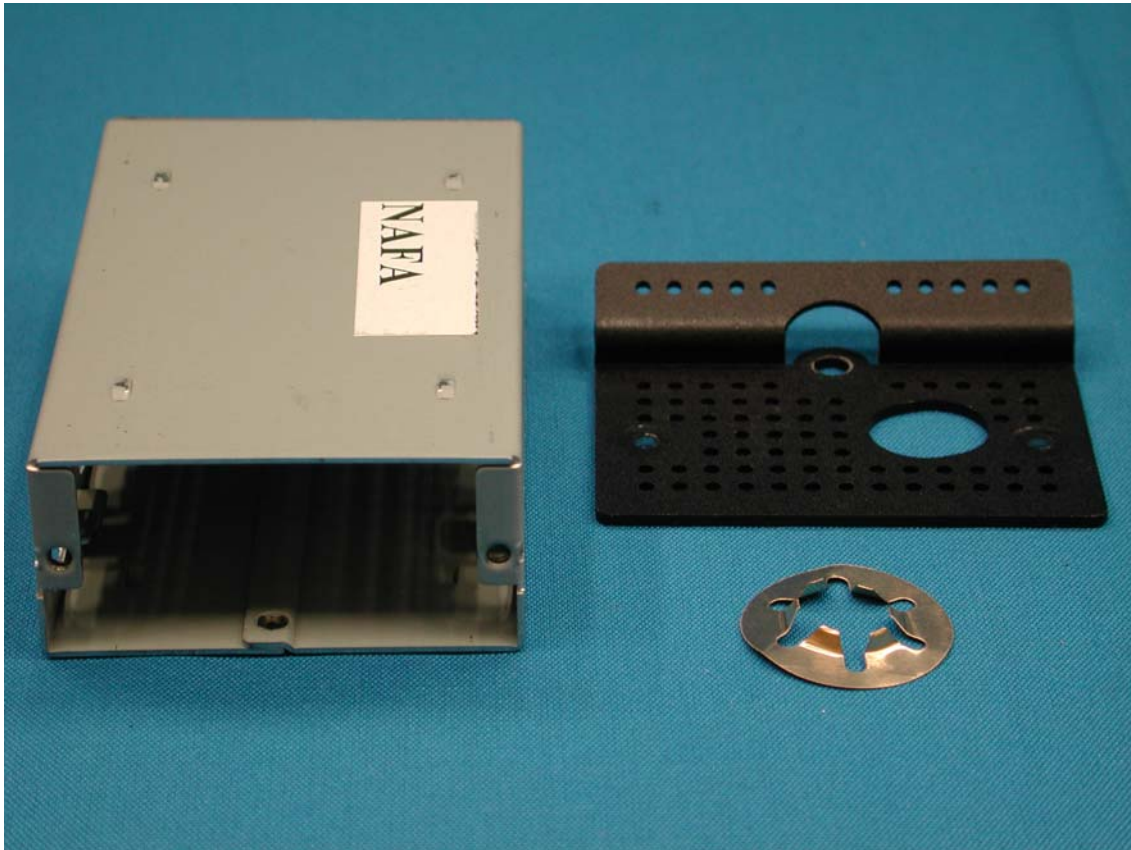
Tuner PCB



Tuner PCB



## Tuner Shielding



## Speaker Front





Speaker Rear



Power Cord and I/F Cables

