

Photographs of P7QNPM-7 Mobile Phone

JULY 2003

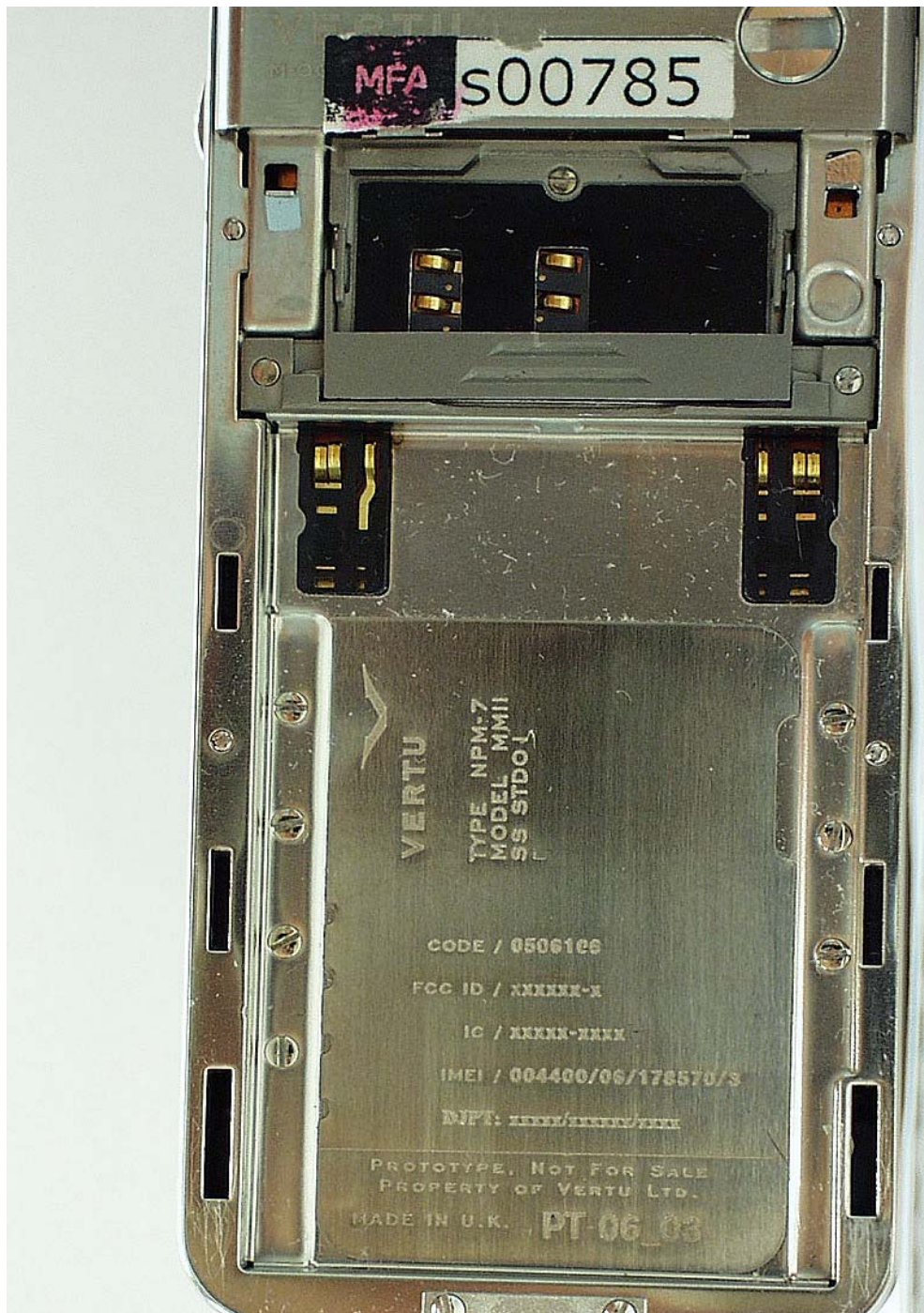


Exhibit 1: INTERNAL View of Vertu P7QNPM-7, battery cover removed to show location of

TYPE DESIGNATION LABEL, and SIM card holder.

Photographs of P7QNPM-7 Mobile Phone

JULY 2003

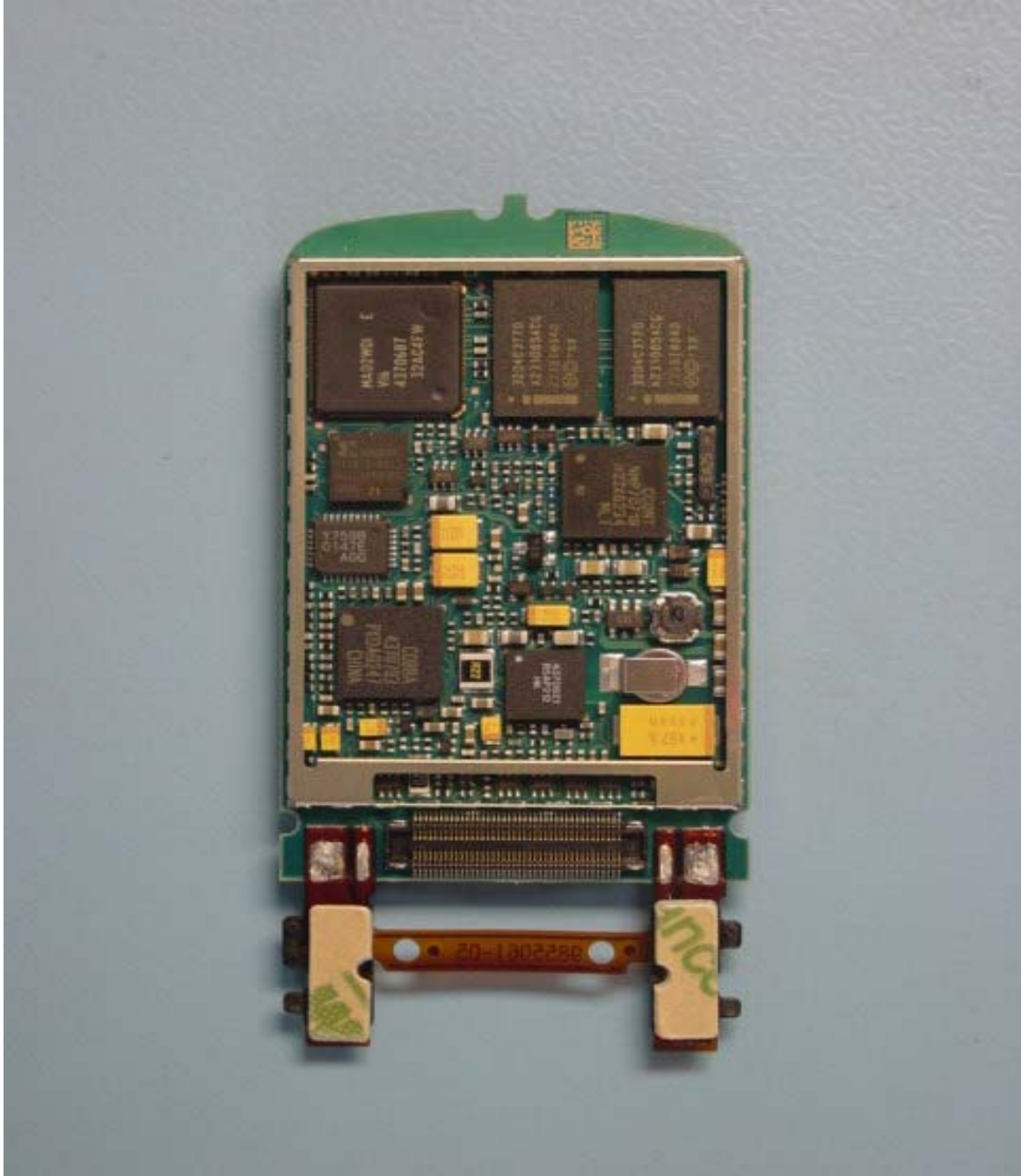


Exhibit 2:INTERNAL VIEW of Circuitry

Bottom View of Printed wire Board, with removable shielding cans removed to show baseband circuitry.

Photographs of P7QNPM-7 Mobile Phone

JULY 2003

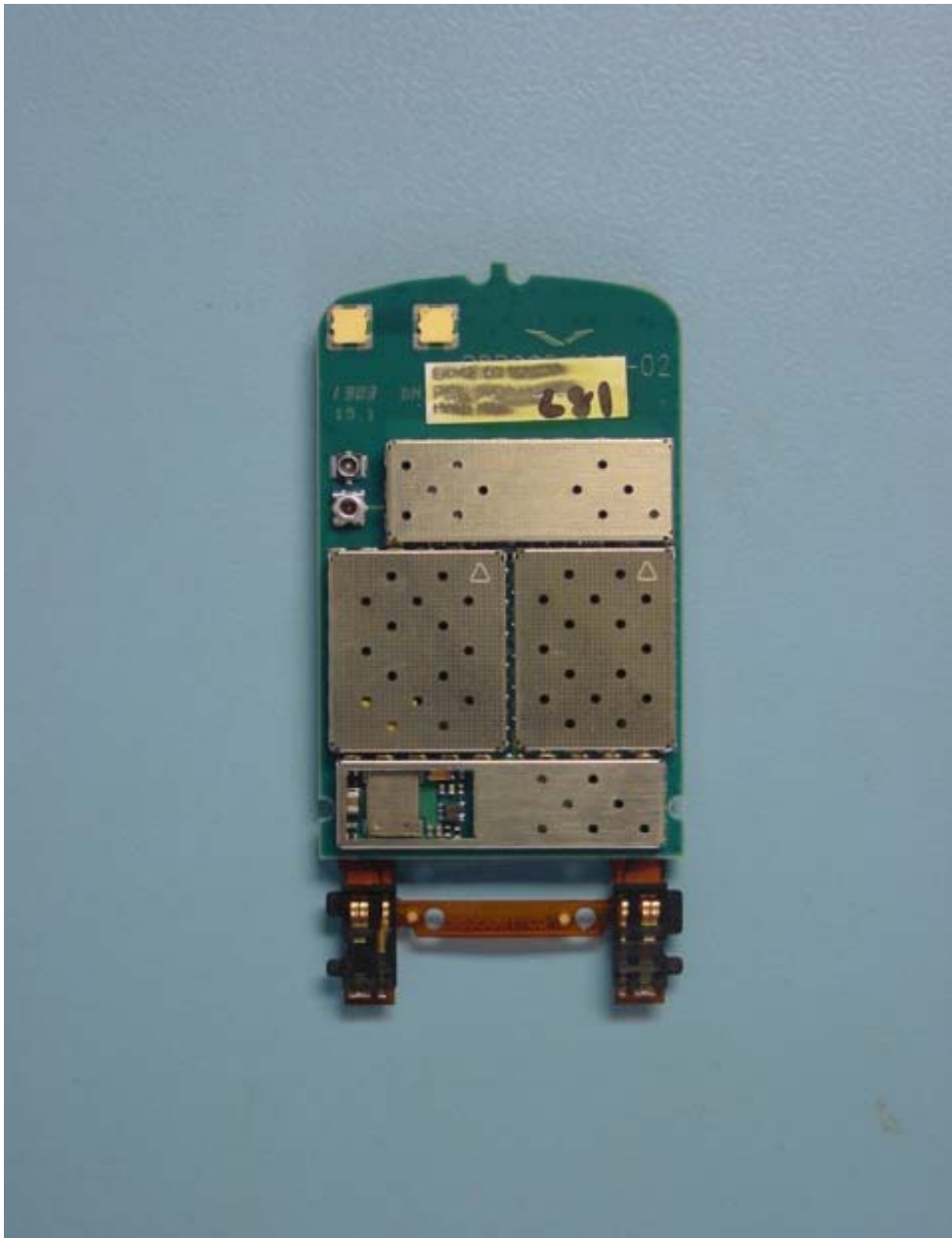


Exhibit 3: INTERNAL VIEW of circuitry .

Top View of Printed Wire Board showing RF circuitry, where possible .

Note:screening cans (beyond those removed) are placed and soldered as a part of the same process that solders RF components to the pwb and are fixed and not removable !



Photographs of P7QNPM-7 Mobile Phone

JULY 2003



Exhibit 4: INTERNAL VIEW of Antenna Module

Showing assembly and printed elements.