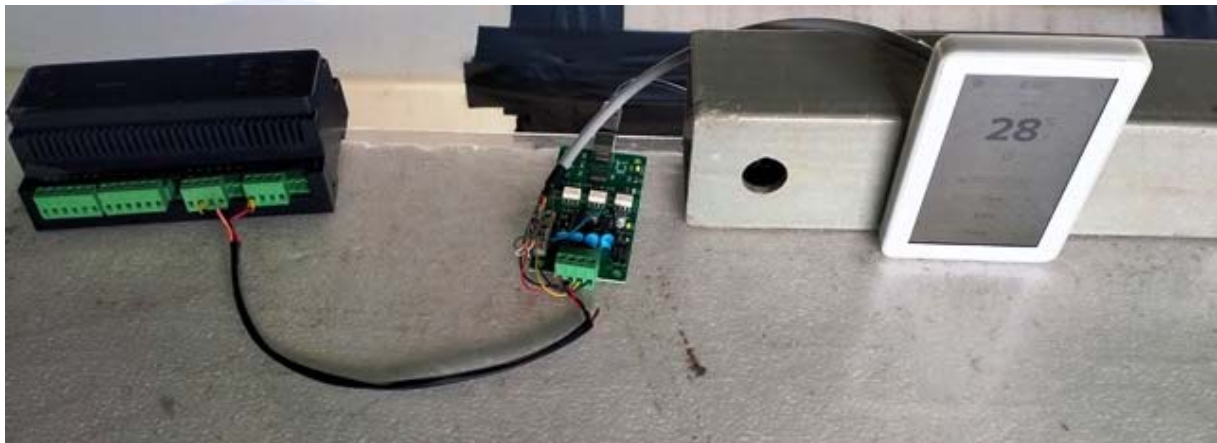


Radiated Emissions Test Setup



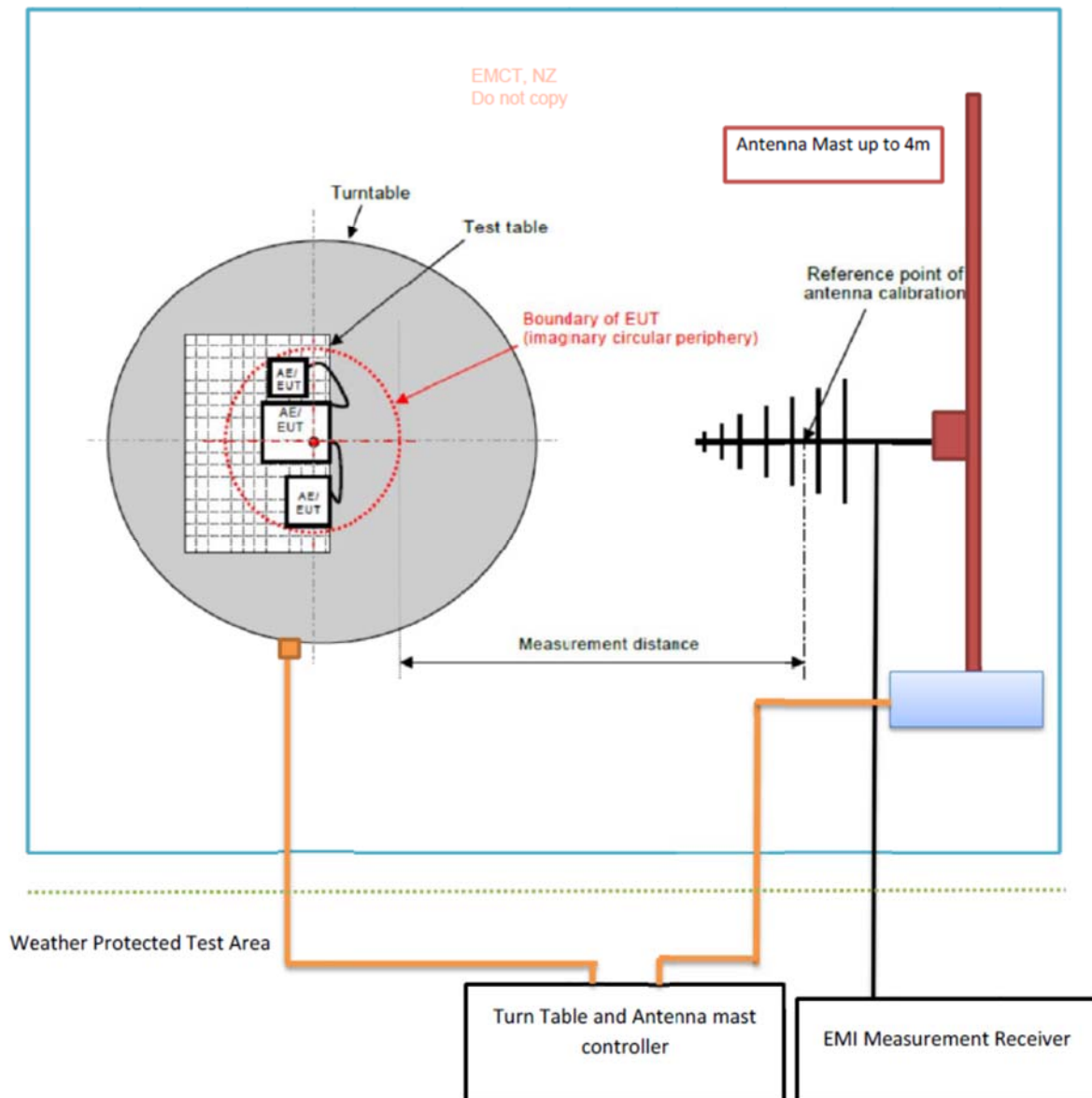








Radiated Emissions Test setup at Open area test site



Below 30 MHz: Loop Antenna; Measurement distance: 10 m

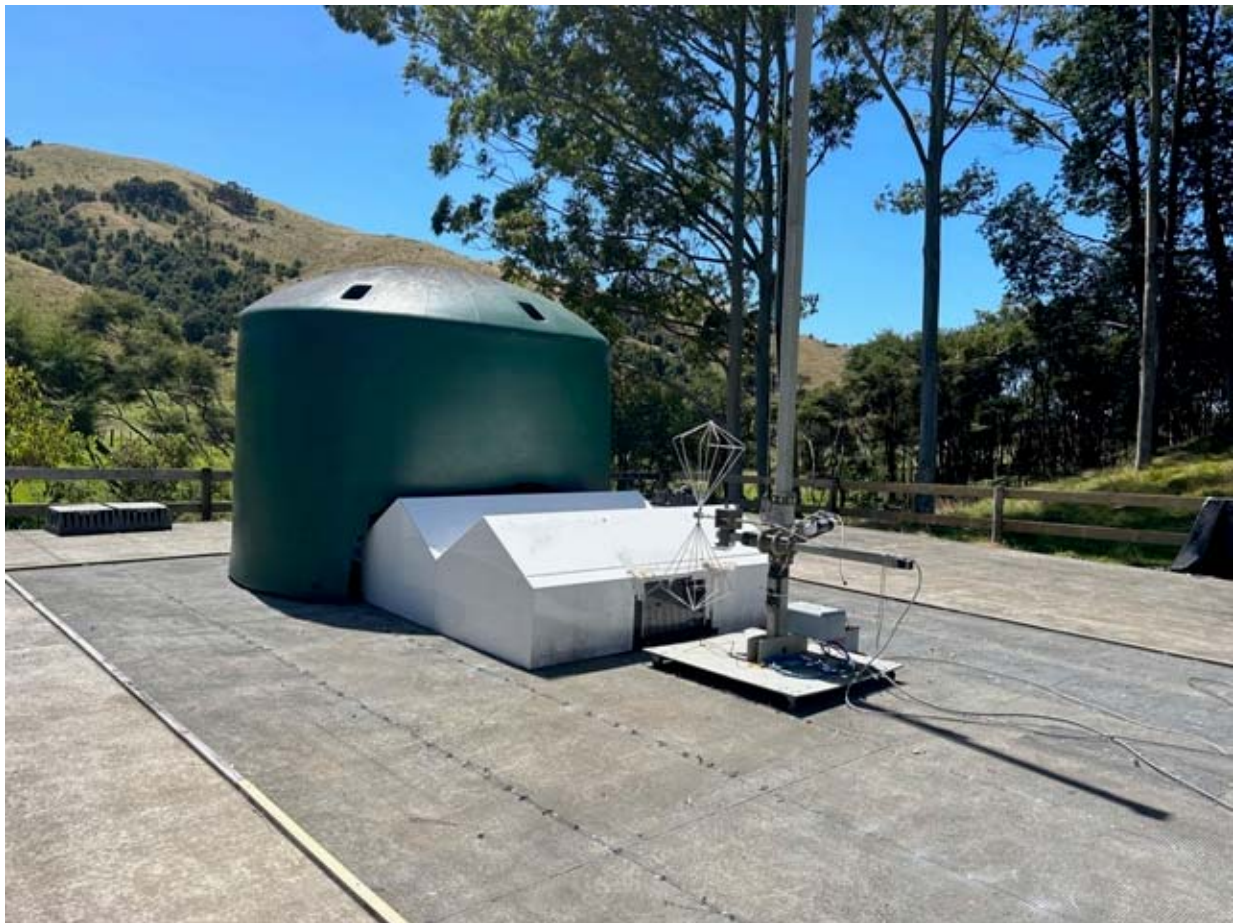
30 MHz-300 MHz: Bi conical Antenna; Measurement distance: 3 m

300 MHz- 1000 MHz: Log Periodic Antenna; Measurement distance: 3 m

Above 1 GHz: Horn Antenna; Measurement distance: 3 m

EMI Receiver Used: ESIB40

Biconical Antenna



Biconical Antenna



Log Periodic Antenna



Log Periodic Antenna



1 – 18 GHz Horn Antenna



18 GHz to 40 GHz Horn



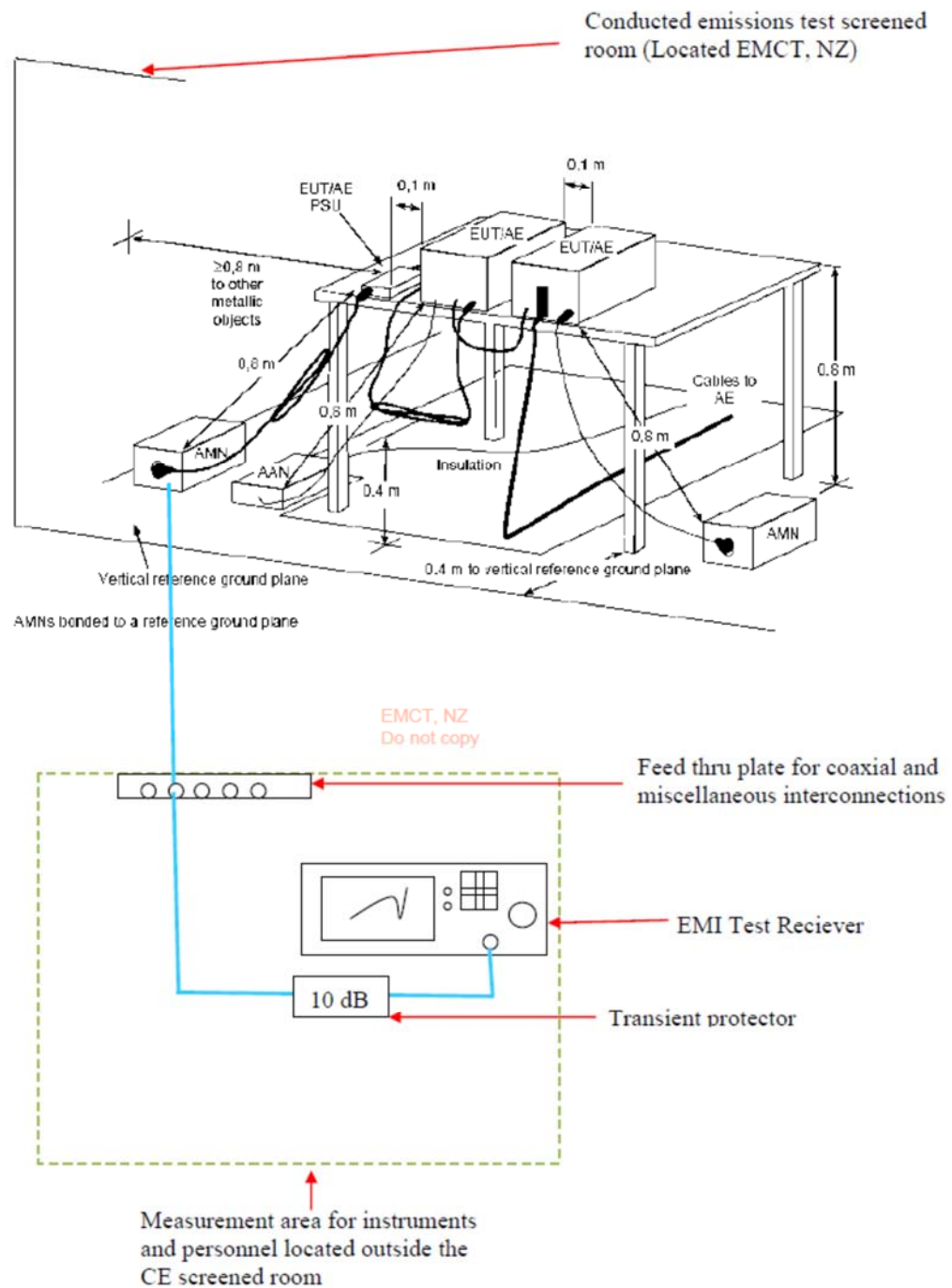
Conducted Emissions Test Setup





Global Product Certification

Block Diagram showing the conducted emission test setup



EMI Receiver Used: ESHS 10