

[Appendix I]: Photographs, Internal

[Front View]

LCD/Top Cover Removed



[Front View]

System Board



[Front View]



[Rear View]

DC IN Harness

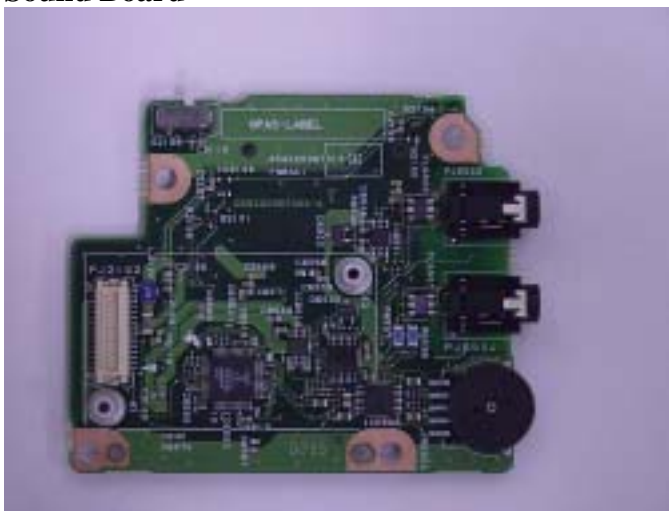


[Front View]



[Rear View]

Sound Board



[Front View]

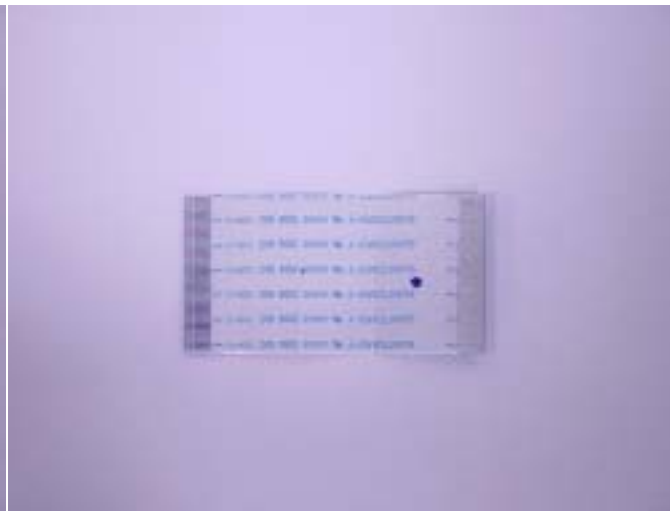


[Rear View]

Sound Relay Flexible Board



[Front View]



[Rear View]

Speaker



[Front View]

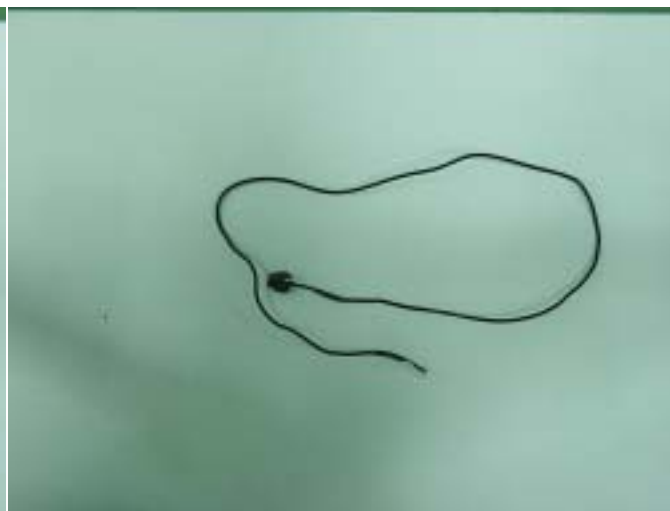


[Rear View]

Microphone



[Front View]



[Rear View]

Microphone Relay Harness



[Front View]



[Rear View]

Modem Daughter Card



[Front View]



[Rear View]

Modular Harness

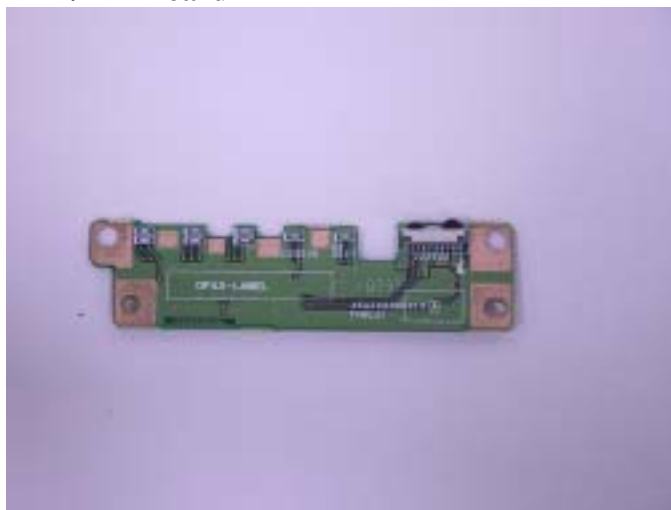


[Front View]

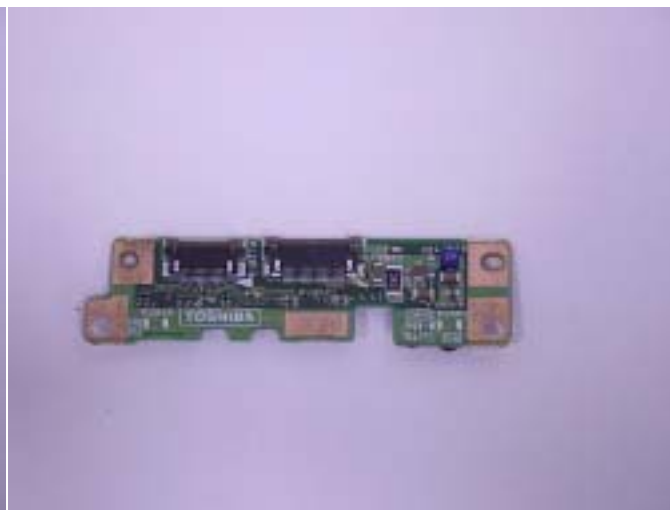


[Rear View]

LED/FIR Board

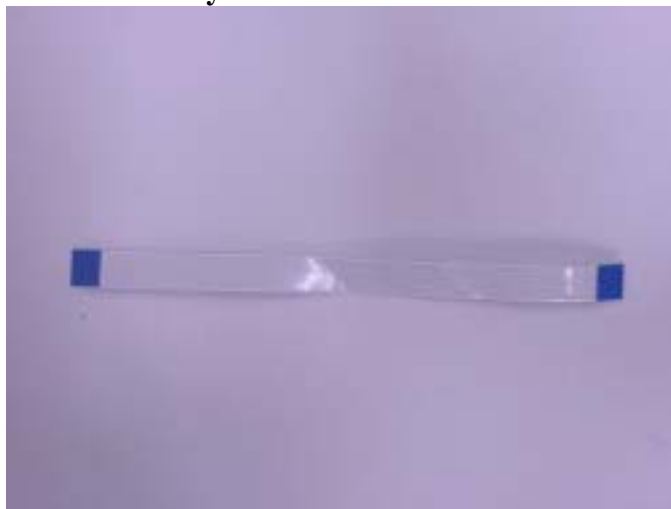


[Front View]



[Rear View]

LED/FIR Relay Board 1



[Front View]



[Rear View]

LED/FIR Relay Board 2



[Front View]



[Rear View]

Touch Pad Unit



[Front View]



[Rear View]

Touch Pad Relay Flexible Board



[Front View]



[Rear View]

Power Switch Board



[Front View]



[Rear View]

Function Switch Board



[Front View]



[Rear View]

Keyboard Unit



[Front View]



[Rear View]

RTC Battery (Ni-MH)



[Front View]



[Rear View]

CPU Fan Module



[Front View]



[Rear View]

Main Battery Pack (Li-Ion)

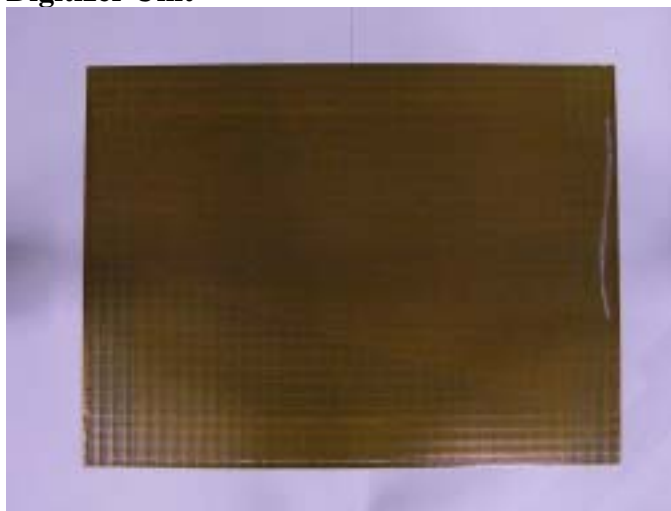


[Front View]

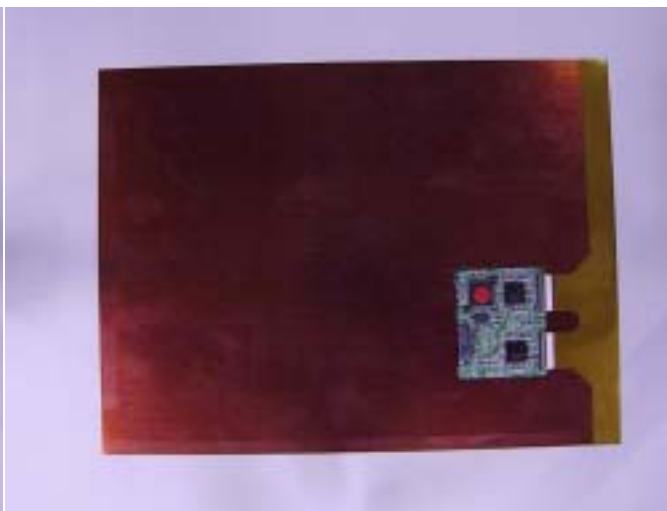


[Rear View]

Digitizer Unit



[Front View]



[Rear View]

FL Inverter



[Front View]



[Rear View]

LCD (Provided with FL)



[Front View]



[Rear View]

LCD and Utility Harness



[Front View]



[Rear View]

LCD Sensor Switch Board (with Hinge of LCD)



[Front View]



[Rear View]

Hard Disk Drive

(20 GB)

Type: HDD2168, Toshiba Corp.



[Front View]



[Rear View]

(30 GB)

Type: HDD2181, Toshiba Corp.



[Front View]



[Rear View]

Type: DK23EA-30, Hitachi Ltd.



[Front View]



[Rear View]

(40 GB)

Type: HDD2171, Toshiba Corp.



[Front View]



[Rear View]

Type: DK23EB-40, Hitachi Ltd.



[Front View]



[Rear View]

Type: IC25N040ATCS05-0, IBM Corp.



[Front View]



[Rear View]

(60 GB)

Type: HDD2184, Toshiba Corp.



[Front View]



[Rear View]

Memory Module



[Front View]

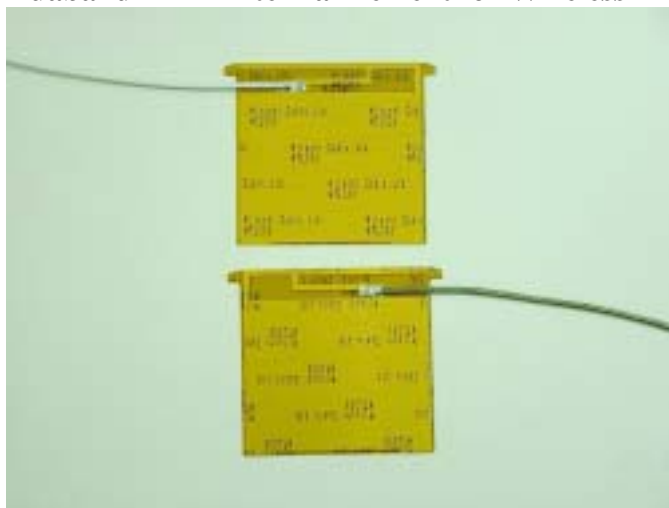


[Rear View]

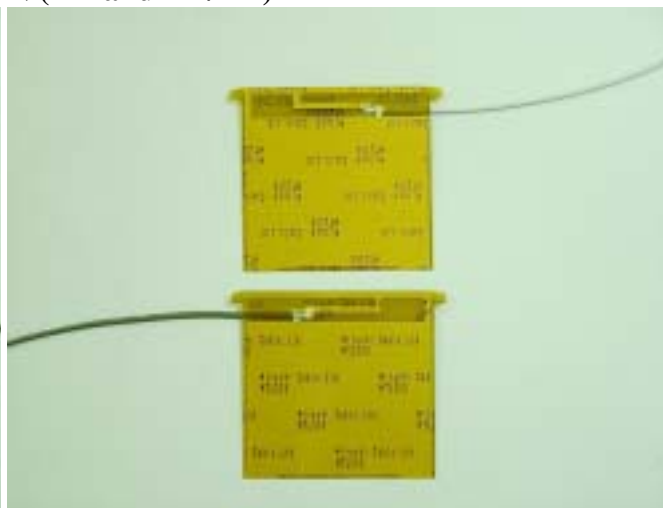
Type PA3189U, Toshiba Corp.



Duaband Film Antenna Element for Wireless LAN (RX and TX/RX)

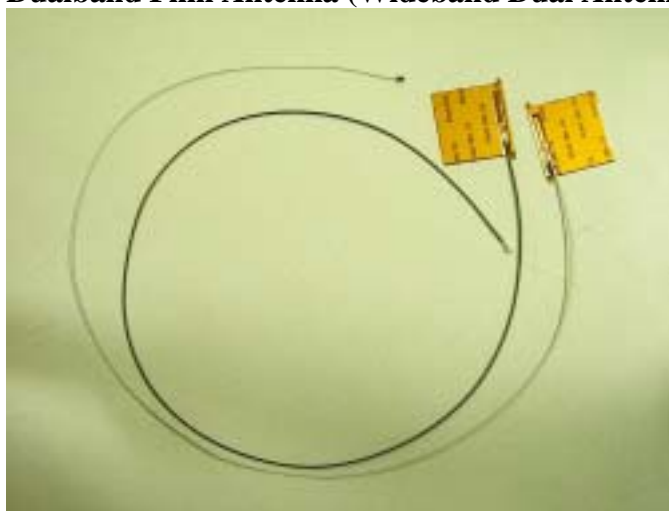


[Front View]

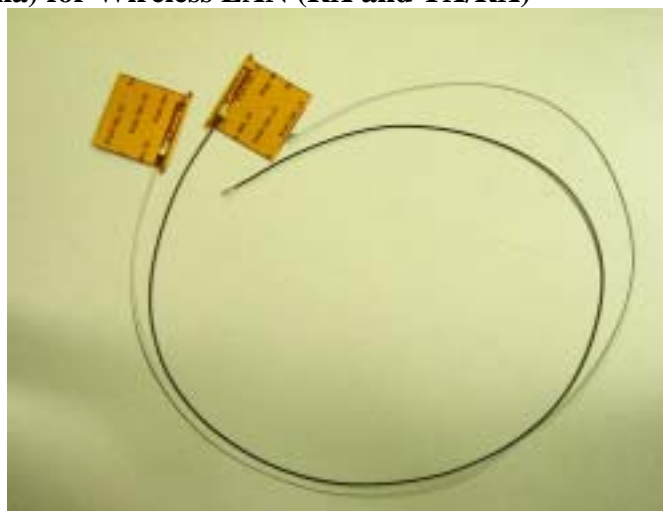


[Rear View]

Dualband Film Antenna (Wideband Dual Antenna) for Wireless LAN (RX and TX/RX)



[Front View]



[Rear View]

Dualband Film Antenna (Wideband Dual Antenna) Element for Wireless LAN (RX and TX/RX)



[Front View]



[Rear View]

Bluetooth Module



[Front View]



[Rear View]

BT Relay Flexible Board



[Front View]

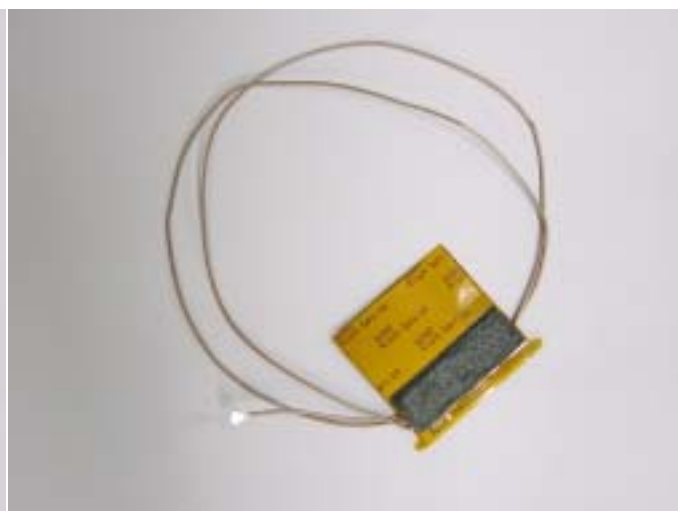


[Rear View]

Antenna Board for Bluetooth



[Front View]



[Rear View]