

TYPE C HUB + Wireless Display Adapter

USB-C/HDMI Transmitter and Receiver

1080P
@60HZ

HD

SoC+
5GHz

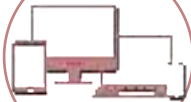
High
Sensitivity

1T1R

Single
Antenna

HUB

3*5Gbps
USB3.0



Plug
& Play



Easy to
Charge



FX-2330



FX-2330	
Types	Transmitter(TX)+ Receiver (RX)+ HUB
Network	WiFi 5GHz, 1T1R
Resolution	2K UHD 1920*1080@60Hz
Transmitter Port	USB-C DP-Alt
Receiver Port	HDMI + USB-A (5V/1A power supply)
Transmitter Size	116*62*18mm
Receiver Size	1m
Weight	90g & 25g
Protocol	MacOS/Windows/Linux/Android/ChromeOS
OTA Online Update	√
HDCP	√
DRM streaming	√

USB-C Power Supply

- ✓ USB-C power supply which allows to share same adapter of your MacBook, iPad, Tablet and etc.
- ✓ Blessed by less accessory on a go.



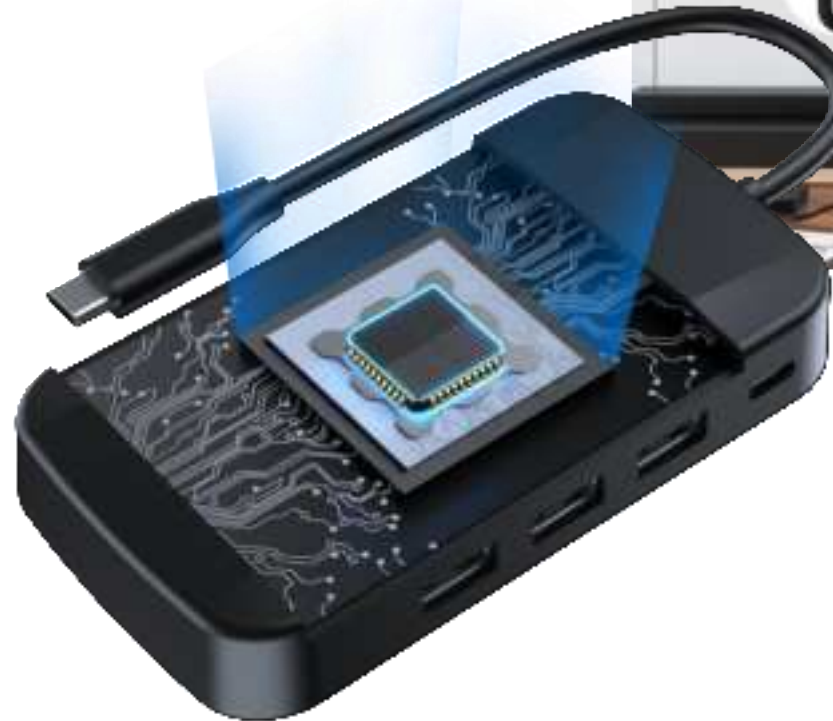
Supports 3*USB 3.1 Gen1 Port

- ✓ Enhanced presentation convenience with storage extraction of USB drives from USB 3.1 ports.
- ✓ Ideal solution for any device without additional USB ports.



High-End Hardware Design for Professional & Efficient Wireless Projection

- ✓ Enhanced 5G WiFi capability with 1T1R high sensitivity antenna to deliver a stable wireless connection.
- ✓ High performance and faster SoC chip to sufficiently running 1080P 60Hz signal.
- ✓ High unit availability by adding HUB functions.



**HUB
USB3.1**

**5G
1T1R**

**1080P
HDR 60Hz**

Built for Business, Engage with Your Audience

- ✓ One click for intuitive controls and effortless screen sharing
- ✓ Lower latency for delivering a glitch-free presentation
- ✓ Quickly switch from one presenter to another in 3 second



Enjoy Movies, Games and Music Along With Your Business Meetings



Long Range Transmission

Easily Extend Screen Sharing Distance



Support 5 Major Operating Systems (Mac OS/ iOS/ Windows/ Android/ Linux)

*This transmitter is ONLY suitable for laptops, tablets, smartphones and other devices that support **TYPE-C DP-ALT** output.

 Android	版本	 Windows	版本	 Mac	版本
HUAWEI Mate20 Pro	Android 10	Dell Inspiron 5000	win 10	MacBook Pro 2019	MacOS 11.4
HUAWEI P40 Pro		Dell Inspiron 5498		MacBook Air (M1 · 2020)	MacOS 11.2.3
HUAWEI P20 Pro	Android 9	Dell Inspiron 15 7570 P70F		MacBook Pro 13inch A2159	Mac OS 10.15
Sony J9110(A1)		Surface 4 Book		MacBook Pro 2017	MacOS 11.4
Sony Xperia5II (Z5 II)	Android 11	Lenovo Think (L490)			
Samsnug S10+	Android 10	Lenovo Think (P52s)			
Samsnug S21 5G	Android 11	Lenovo win 10			
Samsung Note9	Android 10	HUAWEI MateBook 13			
Samsung Note10+	Android 11				
oppo Find X2Pro	Android 10				
Nokia8 Sirocco					

 iOS	版本
iPad Pro 2019	iOS 15.1
iPad Mini 2021	iOS 15.1

 ChromeBook	版本
Asus Chromebook C423N	91.0.4472.81

Portability

Offer freedom of movement, anywhere.

Click & Share

Offer presenters seamless, one-click access to screen sharing.

No cable needed

Keep workspaces looking tidy by getting rid of unsightly cables and extra adaptors.



This device complies with part 15 of the FCC Rules. Operation is subject to the following two conditions: (1) This device may not cause harmful interference, and (2) this device must accept any interference received, including interference that may cause undesired operation.

Any Changes or modifications not expressly approved by the party responsible for compliance could void the user's authority to operate the equipment.

Note: This equipment has been tested and found to comply with the limits for a Class B digital device, pursuant to part 15 of the FCC Rules. These limits are designed to provide reasonable protection against harmful interference in a residential installation. This equipment generates uses and can radiate radio frequency energy and, if not installed and used in accordance with the instructions, may cause harmful interference to radio communications. However, there is no guarantee that interference will not occur in a particular installation. If this equipment does cause harmful interference to radio or television reception, which can be determined by turning the equipment off and on, the user is encouraged to try to correct the interference by one or more of the following measures:

- Reorient or relocate the receiving antenna.
- Increase the separation between the equipment and receiver.
- Connect the equipment into an outlet on a circuit different from that to which the receiver is connected.
- Consult the dealer or an experienced radio/TV technician for help.

FCC Radiation Exposure statement

The device has been evaluatec to meel general RF exposure requirement. The device can be used in porlable exposure condition without restriction.