

# Installation Guide

Insight Managed  
WiFi 6 AX1800  
Dual Band Access Point  
Model WAX610



**NETGEAR, Inc.**  
350 East Plumeria Drive  
San Jose, CA 95134, USA

May 2020

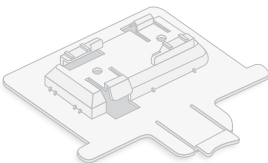
**NETGEAR INTERNATIONAL LTD**  
Floor 1, Building 3,  
University Technology Centre  
Curraheen Road, Cork,  
T12EF21, Ireland

© NETGEAR, Inc., NETGEAR and the NETGEAR  
Logo are trademarks of NETGEAR, Inc. Any  
non-NETGEAR trademarks are used for reference  
purposes only.

## Package contents



Insight Managed WiFi 6 AX1800  
Dual Band Access Point  
Model WAX610



Bracket for ceiling mounting



2 screws and 2 anchors  
for ceiling or wall mounting

**Note:** The package does not include a power adapter. You power up the access point by connecting it to a PoE+ switch. However, if you do not want to use PoE, you can order a power adapter.

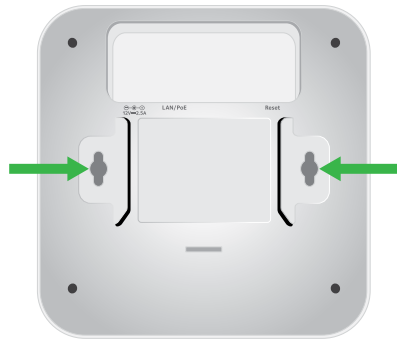
## Installation options

You can mount the access point to a wall or ceiling, or you can install it freestanding on a flat surface.

We recommend that you use a *flat* Ethernet cable so that the cable fits in the narrow space between the access point and the surface on which it is mounted or placed.

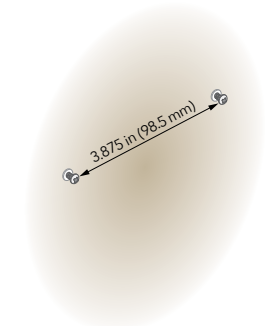
## Mount to a wall

The bottom of the access point includes two holes that let you mount the access point on two screws inserted in a wall.

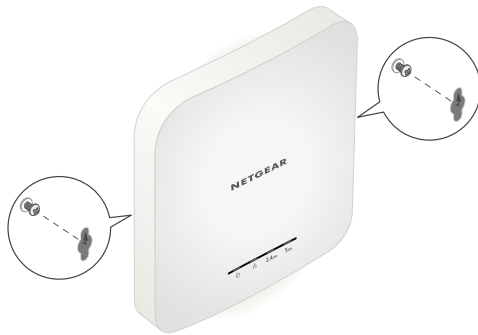


1. Mark the wall where you want to insert the provided anchors and screws, which must be 3.875 in (98.5 mm) apart, and insert the anchors and screws.

Leave about ¼ inch (6 mm) of each screw protruded from the wall so that you can insert the screws into the holes on the bottom of the access point.

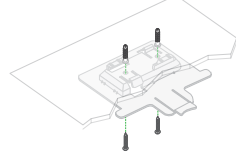


2. Line up the holes on the bottom of the access point with the screws in the wall and mount the access point to the wall.

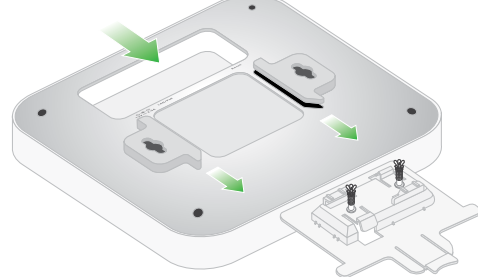


## Mount to a ceiling

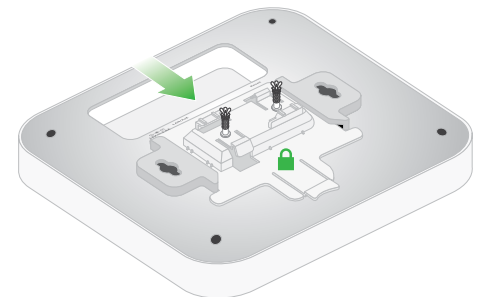
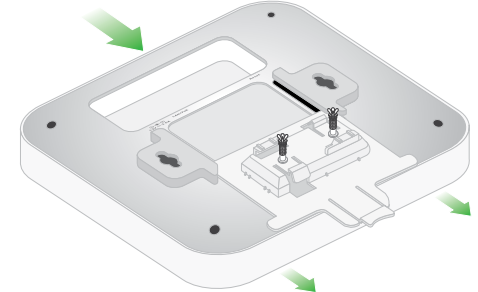
1. Using the anchors and screws provided, attach the bracket to the ceiling, with the rectangular protruding part of the bracket against the ceiling surface.



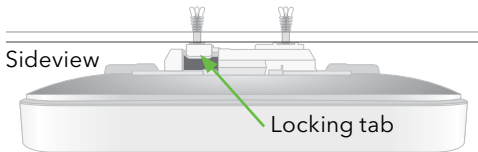
2. Hold the access point upside down with the front of the access point facing the bracket. Then, line up the guides in the bottom of the access point with the bracket.



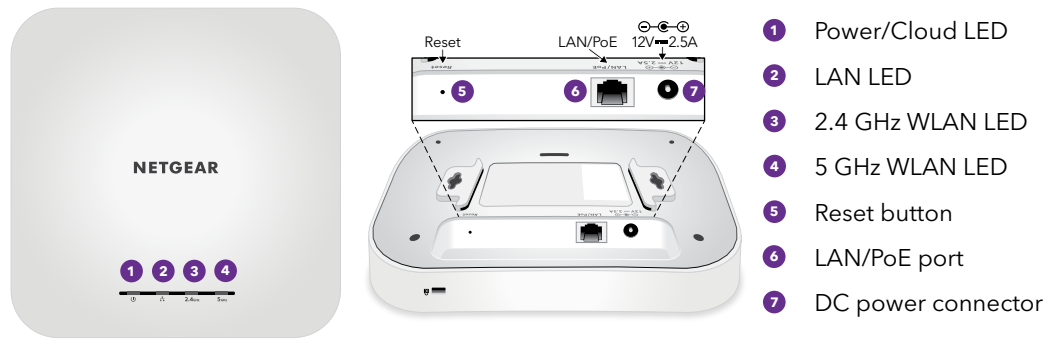
3. Slide the access point into the bracket until it locks in place. The locking tab must be at the front of the access point.



**Note:** To unlock the access point, push the locking tab toward the ceiling and slide the access point out of the bracket.



# WiFi 6 AX1800 Access Point overview



## 1. Register the access point in NETGEAR Insight

- On your mobile device, visit the Apple App Store or Google Play Store, search for NETGEAR Insight, and download the latest version of the app.

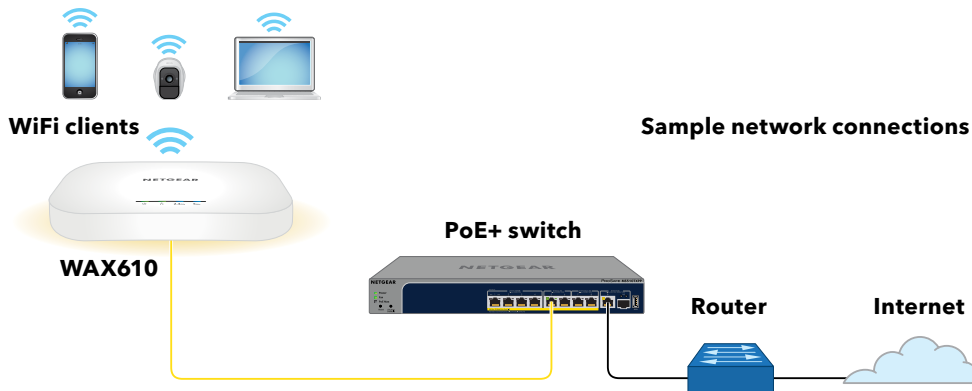


- Open the NETGEAR Insight app on your mobile device.
- If you do not own a NETGEAR account, tap **Create NETGEAR Account** and follow the onscreen instructions.
- Enter the email address and password for your account and tap **LOG IN**.
- Tap **+** in the upper right corner.
- Either use the camera on your phone to scan the QR code or barcode, or type in the serial number.
- Follow the instructions on screen to register the device.

## 2. Connect the access point to a PoE+ switch

Power up the access point by connecting the LAN/PoE port to a PoE+ switch that supplies 802.3at PoE+.

The LAN/PoE port of the access point supports Ethernet speeds up to 2.5 Gbps. The sample connection figure shows a NETGEAR MS510TXPP switch, which supports speeds of 2.5 Gbps and higher. However, if your Internet connection, modem, and switch support a maximum speed of 1 Gbps (which a common speed), the access point LAN connection functions at 1 Gbps.



## WAX610 IG 1st Compliance Draft 24Apr2020

The access point receives an IP address from a DHCP server (or a router that functions as a DHCP server) in your network. If your network does not include a DHCP server, the access point uses its default IP address 192.168.0.100.

During installation and setup, the access point's LEDs light in these colors:

|  |  |  |
|--|--|--|
| <b>Power/Cloud</b>                       |  | <b>Solid green.</b> The access point started up and functions either as a standalone access point or as an Insight discovered access point that is not connected to the Insight cloud-based management platform. |
| <b>LAN</b><br>(one of two speed options) |  | <b>Solid green.</b> The LAN port detects a speed of 2.5 Gbps.  |
|  |  | <b>Solid amber.</b> The LAN port detects a speed of less than 2.5 Gbps, such as 1 Gbps (which a common speed).   |
| <b>2.4 GHz WLAN</b>                      |  | <b>Solid green.</b> The 2.4 GHz radio is operating without clients.  |
| <b>5 GHz WLAN</b>                        |  | <b>Solid green.</b> The 5 GHz radio is operating without clients.  |

For more information about the LEDs, see the user manual, which you can download by visiting [netgear.com/support/product/WAX610](https://www.netgear.com/support/product/WAX610).

## 3. Configure the access point with NETGEAR Insight

Make sure that access point is connected to the Internet. That is, the switch to which the access point is connected must be connected to the Internet.

- Connect your mobile device to the access point's default SSID.  
The default SSID is on the access point label on the bottom of the access point and is shown in the format NETGEARxxxxxx-SETUP, where xxxxxx are the last six hexadecimal digits of the access point's MAC address. The default password is **sharedsecret**.
- Open the NETGEAR Insight app on your mobile device.
- Enter the email address and password for your Insight account and tap **LOG IN**.  
In most situations, Insight detects the access point automatically. This process can take several minutes.
- Select the access point and tap **Next**.  
You are prompted to add the access point to an Insight network location.
- Create a new network location by specifying a network name, a device admin password, and the country and time zone where the network location is located, tap **Next**, and then tap **OK**.  
The device admin password replaces the existing admin password on all devices that you add to the network location.  
Your Insight network location is now set up and the access point is added to the network location.
- If prompted, name the access point and tap **Next**.

The access point automatically updates to the latest Insight firmware. This might take up to 10 minutes, during which the access point might restart several times.

The access point is now an Insight managed device that is connected to the Insight cloud-based management platform. The Power/Cloud LED lights solid blue ().

- Use the Insight app to configure and manage the access point.

## Other setup methods

If you are an Insight Premium or Insight Pro subscriber, you can use the NETGEAR Insight Cloud portal to set up the access point.

To set up the access point, you can also use the access point's local browser user interface (UI). For more information, see the user manual, which you can download by visiting [netgear.com/support/product/WAX610](https://www.netgear.com/support/product/WAX610).

## Support and Community

Visit [netgear.com/support](https://www.netgear.com/support) to get your questions answered and access the latest downloads.

You can also check out our NETGEAR Community for helpful advice at [community.netgear.com](https://community.netgear.com).

For more information about Insight Instant Mesh-capable products, visit [netgear.com](https://www.netgear.com).

## Regulatory and Legal

Si ce produit est vendu au Canada, vous pouvez accéder à ce document en français canadien à <https://www.netgear.com/support/download/>.

(If this product is sold in Canada, you can access this document in Canadian French at <https://www.netgear.com/support/download/>.)

For regulatory compliance information including the EU Declaration of Conformity, visit <https://www.netgear.com/about/regulatory/>.

See the regulatory compliance document before connecting the power supply.

For NETGEAR's Privacy Policy, visit <https://www.netgear.com/about/privacy-policy>.

By using this device, you are agreeing to NETGEAR's Terms and Conditions at <https://www.netgear.com/about/terms-and-conditions>. If you do not agree, return the device to your place of purchase within your return period.

Do not use this device outdoors.