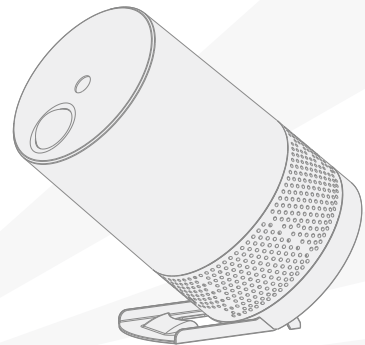


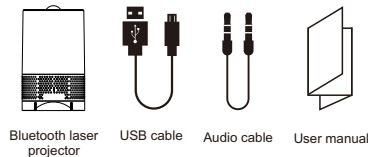
USER MANUAL



Version 1.0



Packing list



Features:

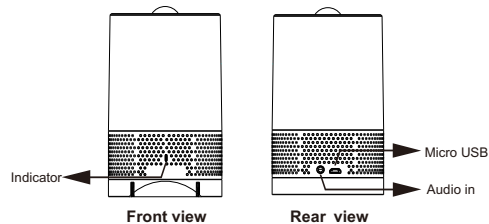
- Bluetooth Laser Projector (BLP) is a brandnew Sound & Ligthing multimedia system which combines professional laser lighting and bluetooth V2.1 technology.
- BLP spreads thousands of green and red dazzling stars covering the ceiling and walls with blue cloud background while enjoying the music.
- Laser operating mode:
Auto: Laser beams change automatically and comfortably.
Sound: Laser beams is activated by sound.
- BLP is exactly a traditional high quality bluetooth audio system with 5W speaker by turning off the Laser lighting.
- High Capacity rechargeable lithium battery supports up to 4 hours audio playback with lighting.
- Easy setting of various laser projection angle.

Specifications

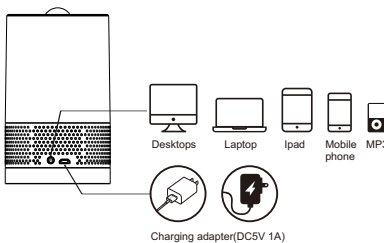
- Class II laser product:
Red Laser: 80mW/650nm
Green Laser: 30mW/ 532nm
- Micro USB charging port, compatible with cell phone adapter 5V/1A (Not included).
- The included rechargeable battery capacity: 2600mAh 3.7V
- Dimensions: ϕ 85mm*137mm

1

Indicator and Connector

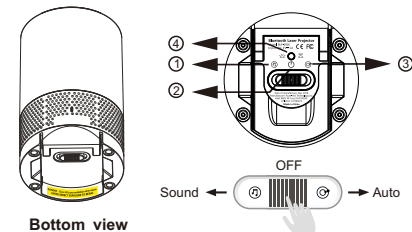


Indicator	Function
Flash Blue LED	Waiting for Bluetooth connection
Blue LED	Bluetooth connected
Red LED	Charging the Battery
Green LED	Battery full charged



2

Button Function

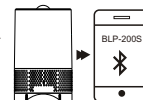


NO	Botton	Function
1	Sound	Bluetooth speaker with Laser Sound control mode
2	Off	Power off
3	Auto	Bluetooth speaker with Laser Auto mode
4	Switch off blue cloud background and laser lighting	

Pairing the BLP

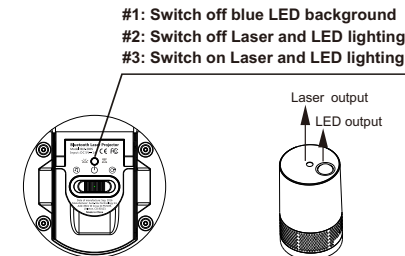
To use the BLP with a cellular phone another type of device (a PDA, for example), it must be paired with the phone. To do this:

- Turn on the BLP, two high-pitched tones will sound, and then the blue lights will flash.
- Initiate the pairing procedure on the Bluetooth-enable cellular phone to pair with the Headset. Make sure the cellular phone is in discovery mode.
- Place the Headset one to three feet from the cellular phone.
- When pairing is successful, the red light will turn off, and the blue light will illuminate.



3

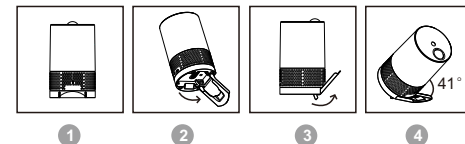
Lighting Control



Lighting Setting

The BLP consists a useful and reliable stand in the bottom of the projector. That makes it possible for you to project the laser beams towards where you want for an impressive laser show at your home party or camping.

To do this, you just simply follow below steps:

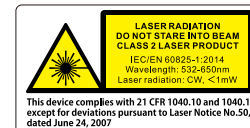


4

Laser Safety Caution

! This laser product is certified as a Class 2 laser product to the require-ments of the US Federal Laser Product Performance Standard (FLPPS) contained in the regulations in 21 CFR Subchapter J.

A Class II laser is considered to be safe because the blink reflex will limit the exposure to no more than 0.25 seconds.



FCC Statement

This device complies with Part 15 of the FCC rules. Operation is subject to the following two conditions: 1) this device may not cause harmful interference, and 2) this device must accept any interference received, including interference that may cause undesired operation.

Note: This equipment has been tested and found to comply with the limits for a Class B digital device, pursuant to part 15 of the FCC Rules. These limits are designed to provide reasonable protection against harmful interference in a residential installation. This equipment generates uses and can radiate radio frequency energy and, if not installed and used in accordance with the instructions, may cause harmful interference to radio communications. However, there is no guarantee that interference will not occur in particular installation. If this equipment does cause harmful interference to radio or television reception, which can be determined by turning the equipment off and on, the user is encouraged to try to correct the interference by one or more of the following measures:
--Reorient or relocate the receiving antenna.
--Increase the separation between the equipment and receiver.
--Connect the equipment into an outlet on a circuit different from that to which the receiver is connected.
--Consult the dealer or an experienced radio/TV technician for help.
Changes or modifications not expressly approved by the party responsible for compliance could void the user's authority to operate the equipment.