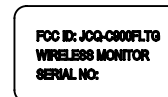
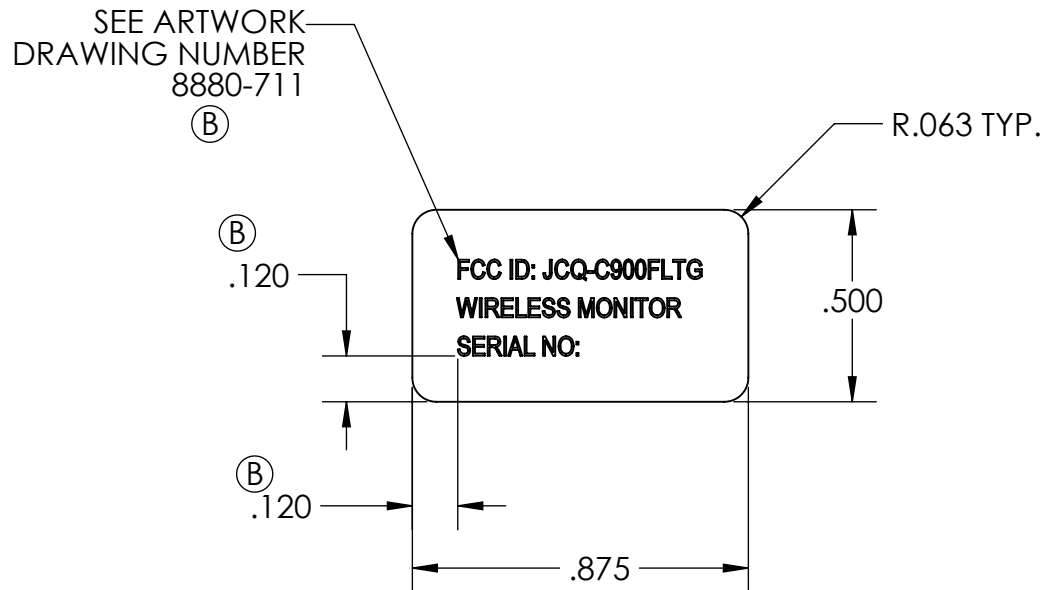


REVISIONS					
ECN	ZONE	REV.	DESCRIPTION	DATE	REVISED BY
-	-	A	INITIAL RELEASE	5/1/2020	-
10539		B	MODIFIED ARTWORK AND ARTWORK LOCATION	6/10/2020	LGF



ACTUAL SIZE

NOTES:

1. SEE ITEM BILL OF MATERIAL FOR MATERIAL SPECIFICATION, FINISH AND COLOR INFORMATION. IN-MOLD FINISHES AND DECORATION SPECIFIED ON DRAWING.
2. UNLESS OTHERWISE NOTED, SEE MATERIAL SPECIFICATION FOR MATERIAL BASED TOLERANCE INFORMATION. ANY TOLERANCE SPECIFIED ON DRAWING SUPERCEDES SPECIFICATION TOLERANCE. NO TOLERANCE ACCUMULATION ALLOWED.
3. THIS DRAWING DIMENSIONS AND TOLERANCES DESCRIBE THE FINISHED PART.
4. CRITICAL INSPECTION DIMENSIONS ARE NOTED IN ROUNDED BOXES.
5. DIMENSIONS ARE SYMMETRICAL ABOUT THEIR CENTERLINES.
6. IF USED, GD&T SYMBOLS CONFORM TO ANSI Y14.5.
7. CONTROL DRAWING ONLY, SEE SOLID MODEL FOR DIMENSIONS NOT SHOWN.

APPROVALS		DATE	TITLE: MetroGuide Light Module FCC Radio Chip Label		
DRAWN	LF	5/1/2020			
CHECKED	DMK	6/11/20			
DO NOT SCALE DRAWING UNLESS OTHERWISE SPECIFIED DIMENSIONS ARE INCHES			SIZE A	DWG NO. 8880-710	REV B
DIMENSIONS X.XX ±.010 X.XXX ±.005 ANGLES ±0.5°			SCALE: 2:1	SHEET: 1 OF 1	

