



CERTIFICATE 2518.05

Exhibit 7B: SAR Test Report Photographs

Motorola Solutions Inc.
EME Test Laboratory
Motorola Solutions Malaysia Sdn Bhd
Plot 2A, Medan Bayan Lepas,
Mukim 12 SWD 11900 Bayan Lepas Penang, Malaysia.



Tey Pei Loo
Deputy Technical Manager (Approved Signatory)
Approval Date: 09/06/2021

Report Revision History

Date	Revision	Comments
07/19/2021	A	Initial release
08/26/2021	B	Update Body worn part number.
09/02/2021	C	Update the new DUT photo.

1.0 Highest SAR Test Position per body location**1.1 Body**

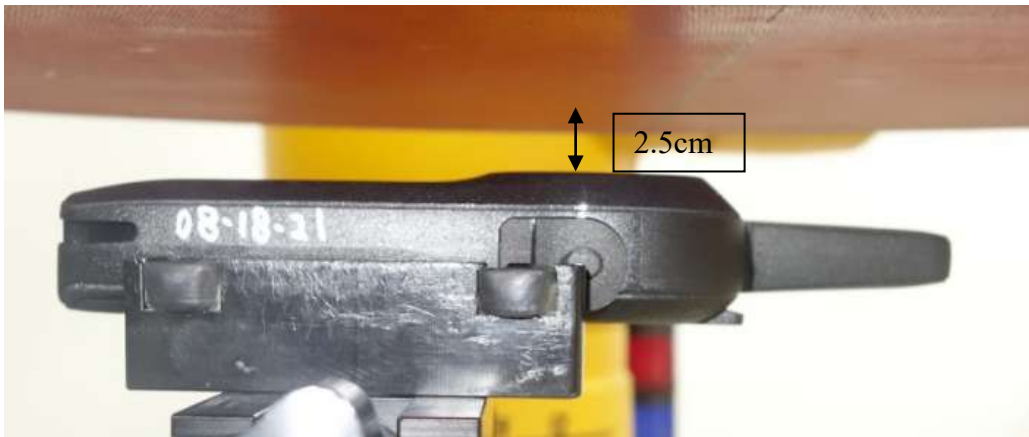
DUT with antenna Fixed Antenna with offered battery PMNN4578A and body worn kit PMLN8392A against the phantom with an audio accessory PMLN8311A attached. Same configurations offered to other battery.



Antenna kit #	Separation Distances (mm)		
	@ bottom surface of the DUT	@ antenna's base	@ antenna's tip
Fixed antenna	8	32	47

1.2 Face

DUT with antenna Fixed Antenna with offered battery PMNN4578A separated 2.5cm from the phantom without an audio accessory attached. Same configurations offered to other battery.



Antenna kit #	Separation Distances (mm)		
	@ bottom surface of the DUT	@ antenna's base	@ antenna's tip
Fixed antenna	31	31	32

1.3 Head

Not applicable.

1.4 Hand

Not applicable

2.0 Other SAR tested positions at the body

- 2.1 Body worn**
Not applicable.
- 2.2 Front Side against phantom**
Not applicable.
- 2.3 Back side against phantom**
Not applicable.
- 2.4 Front 2.5cm separation**
Not applicable
- 2.5 Antenna 2.5cm separation**
Not applicable
- 2.6 Back 2.5cm separation**
Not applicable

3.0 Other SAR tested positions at the face

- 3.1 Back of DUT at 2.5cm separation**
Not applicable.
- 3.2 Front of DUT at 2.5cm separation**
Not applicable.

4.0 Other SAR tested positions at the head

- 4.1 Left ear touch**
Not applicable.
- 4.2 Left ear tilt**
Not applicable.
- 4.3 Right ear touch**
Not applicable.
- 4.4 Right ear tilt**
Not applicable.

5.0 Other SAR tested positions at the hand

- 5.1 Left side
Not applicable.
- 5.2 Right side
Not applicable.
- 5.3 Top side
Not applicable.
- 5.4 Bottom side
Not applicable.
- 5.5 Back side
Not applicable.

6.0 DUT and Accessory Photos

The purpose of these photos is to illustrate the tested accessories. Refer to Part 1 of 2, section 7.0 for additional details on the offered accessories.

6.1 Antenna dimension and photo(s):

Antenna Kit #	Physical Length (mm)	Electrical Length
Fixed Antenna	4.43	1/2 wave



6.2 Body worn accessories



PMLN8392A



DUT with Body worn PMLN8392A front, side and back view

6.3 Battery accessories:



HKNN4013ASP01 (Front, side and back View)



PMNN4578A (Side, Front and Back View)

6.4 Audio accessories:



PMLN8311A

6.5 DUT Dimensions

	Height (mm)	Width (mm)	Depth (mm)
Radio only (w/o battery)	157	51	25
Radio with battery PMNN4578A	157	51	28
Radio with battery HKNN4013ASP01	157	51	25

For illustration purposes only - the following figure reflects the location of the device’s dimension.



Note: H = Height; W = Width; D = Depth

$W1 = (\text{Width @ Top}) / (\text{Width @ PTT})$

$D2 = (\text{Depth @ Bottom}) / (\text{Depth @ PTT})$