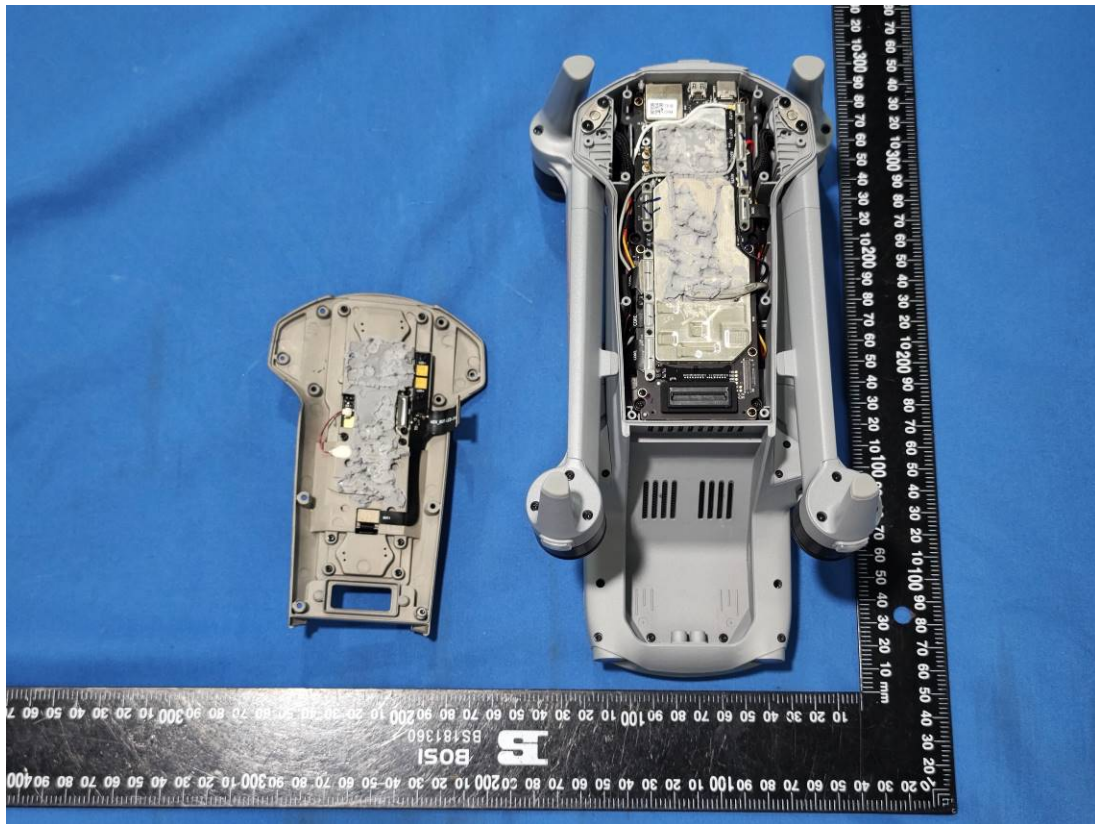
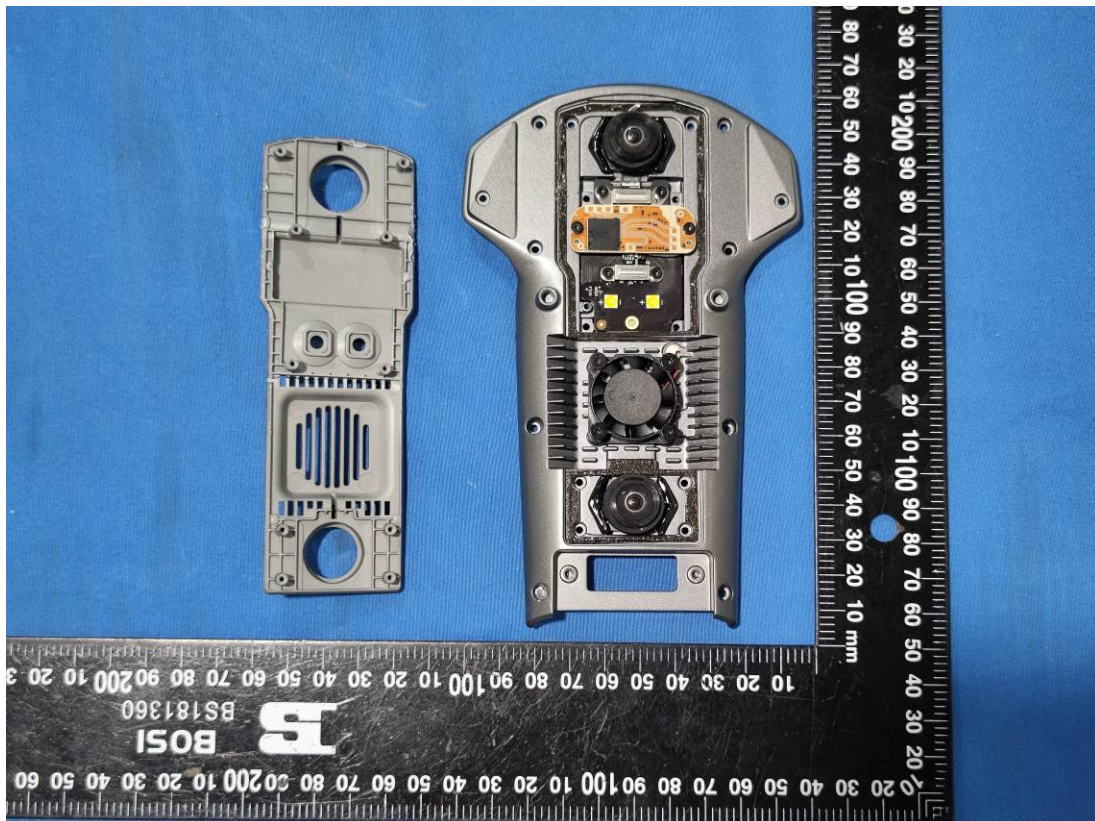
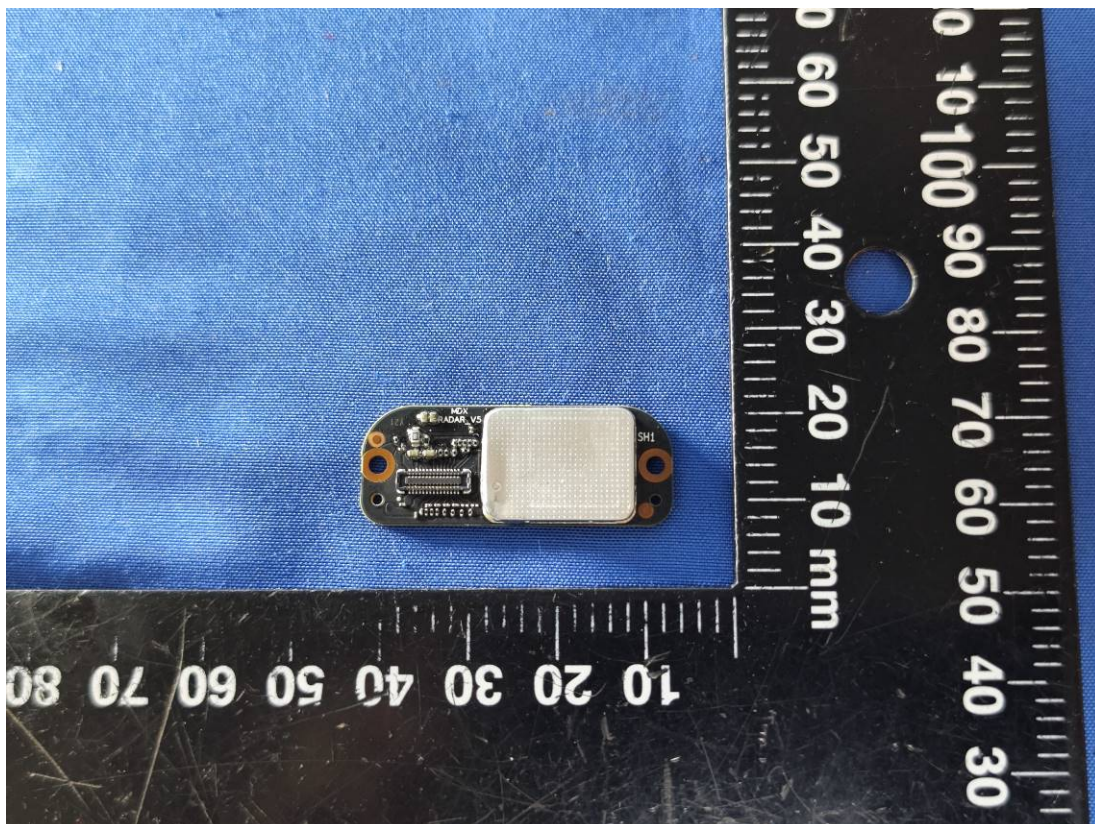
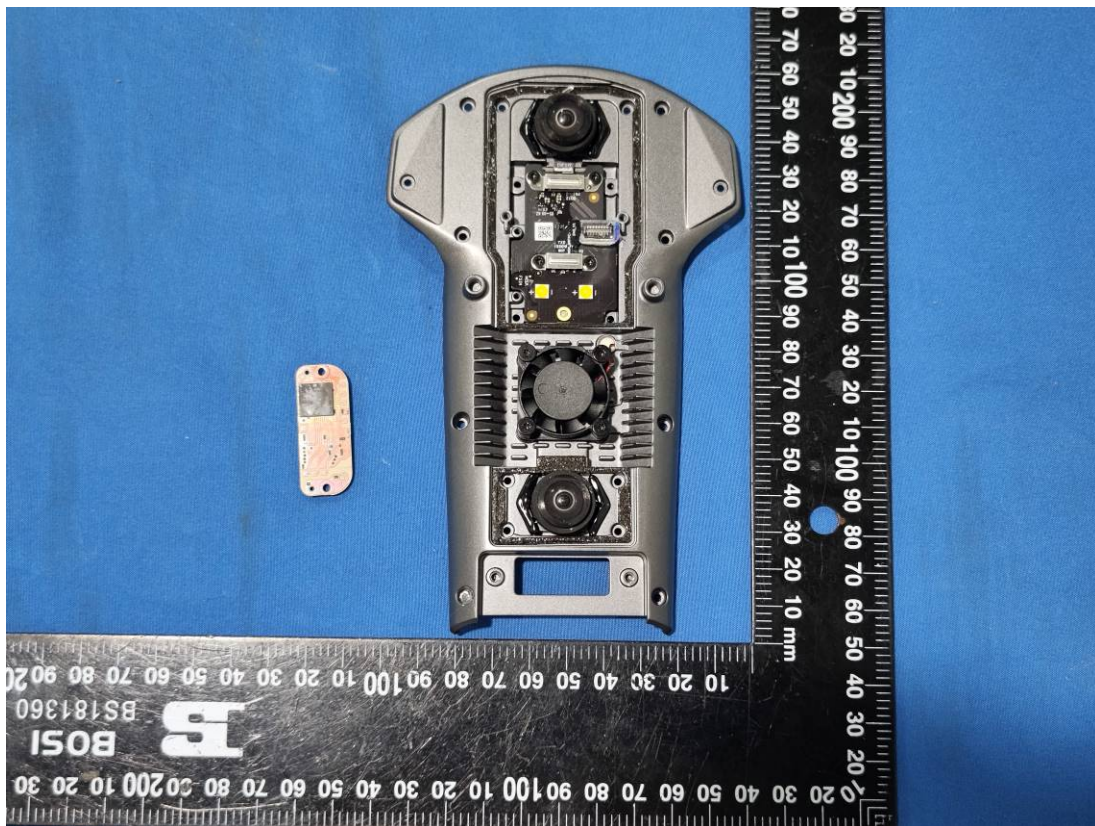
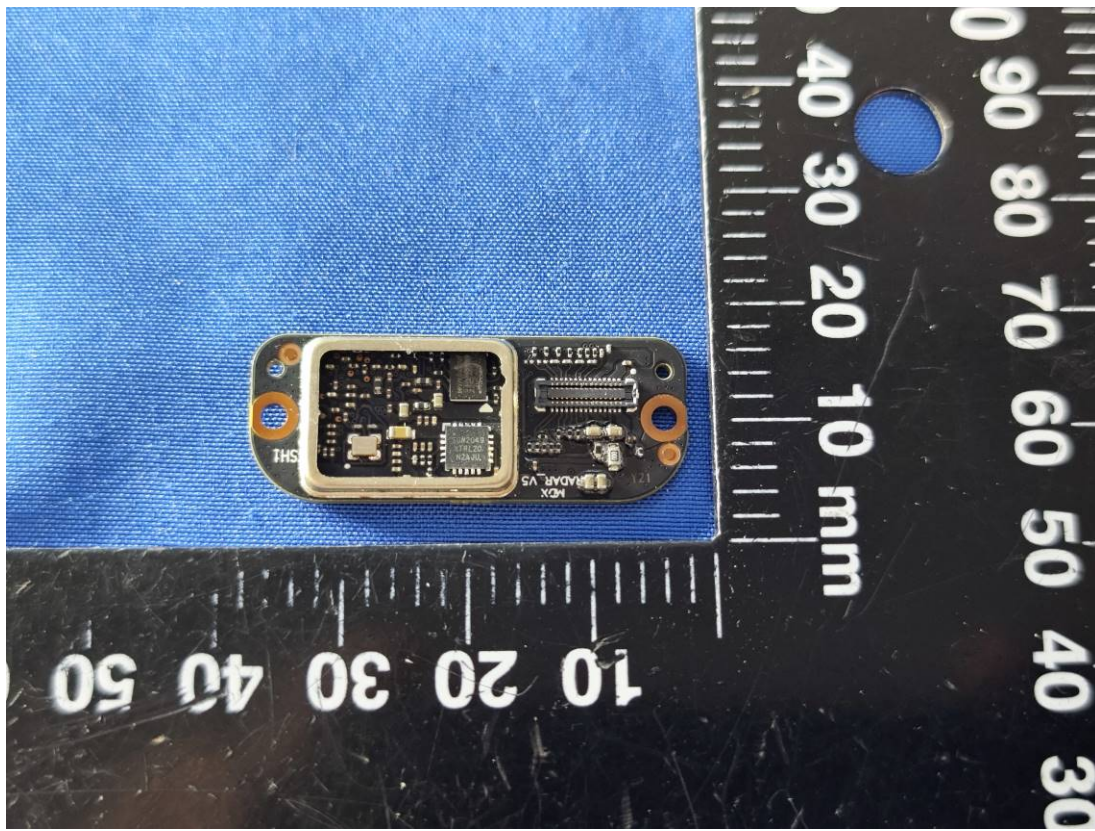


EUT INTERNAL PHOTOGRAPHS

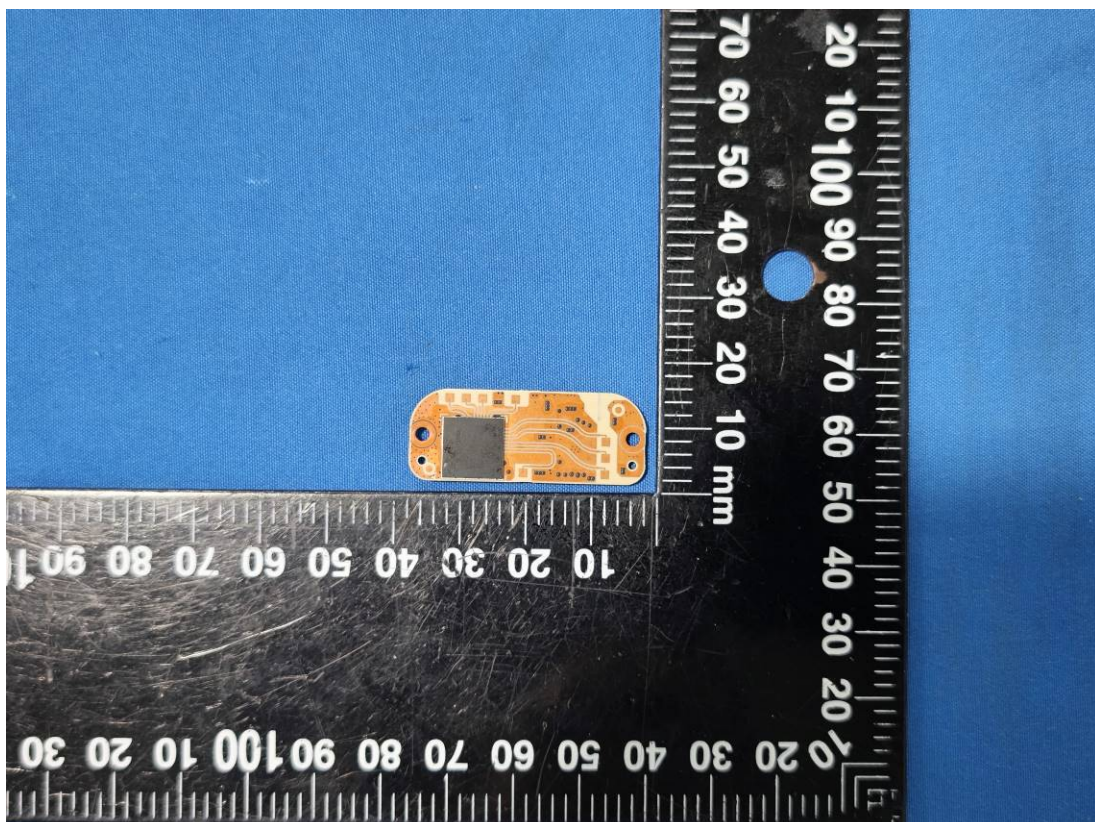




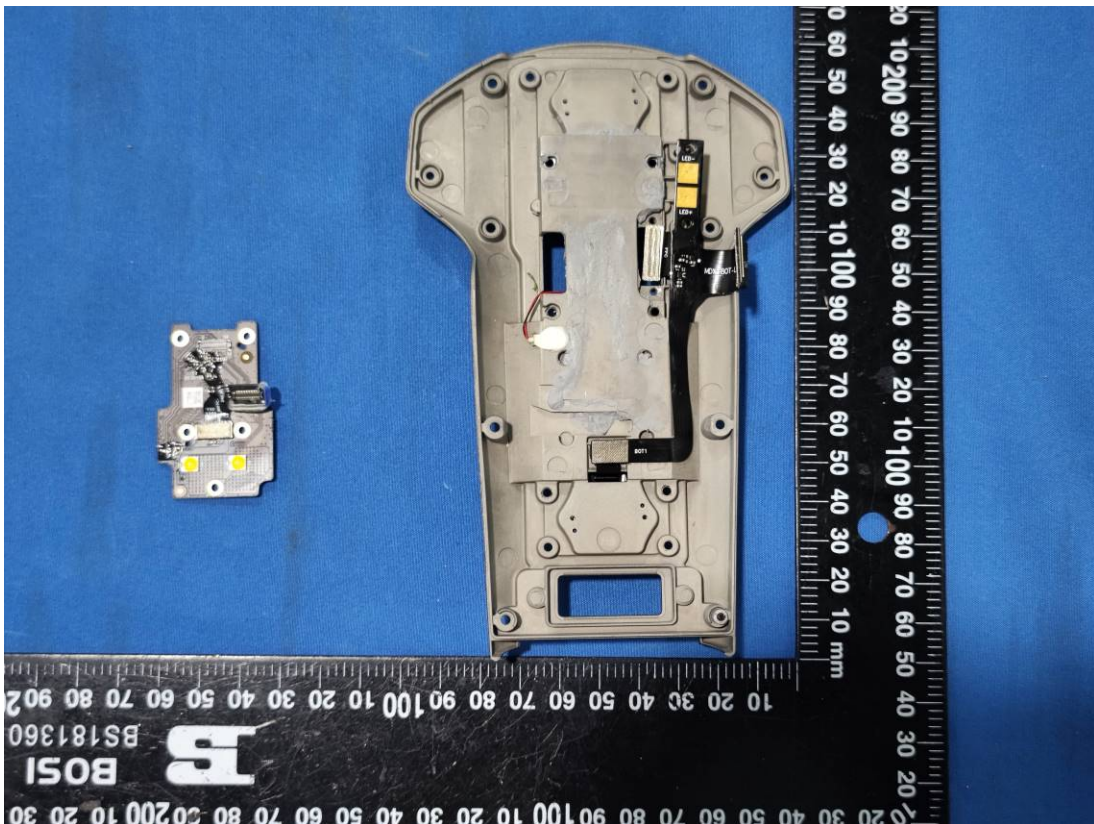


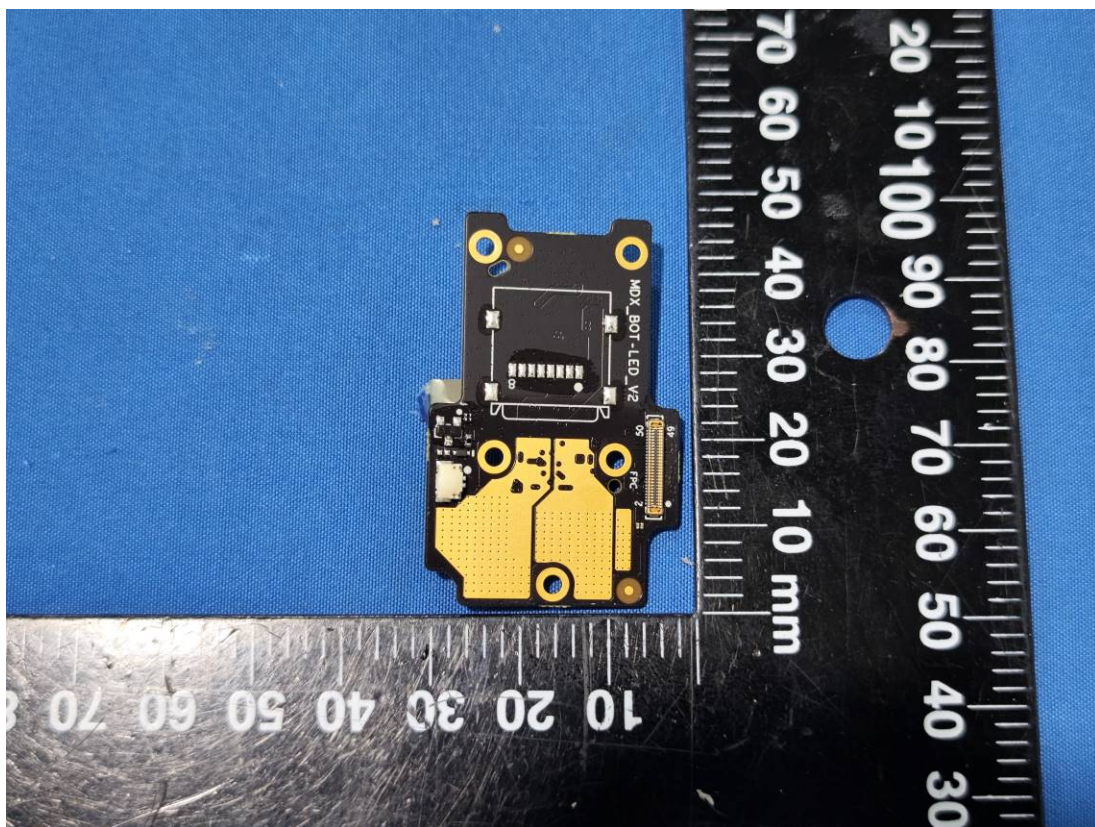
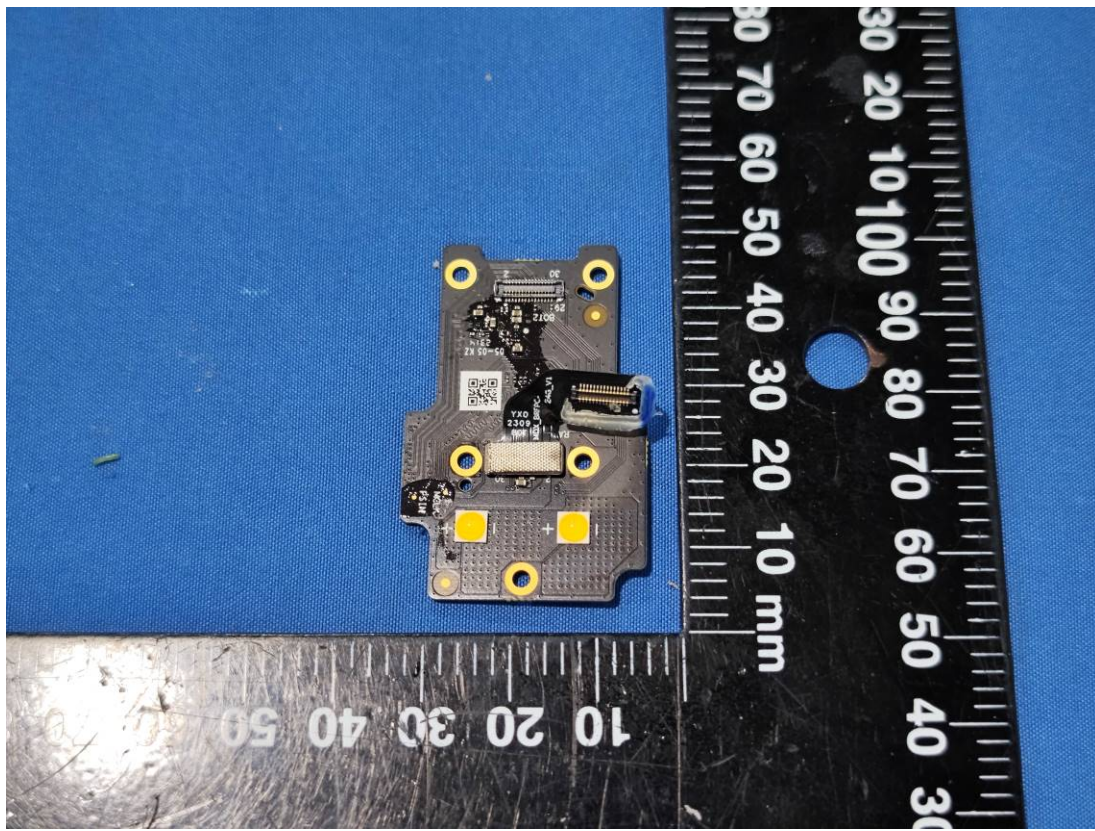


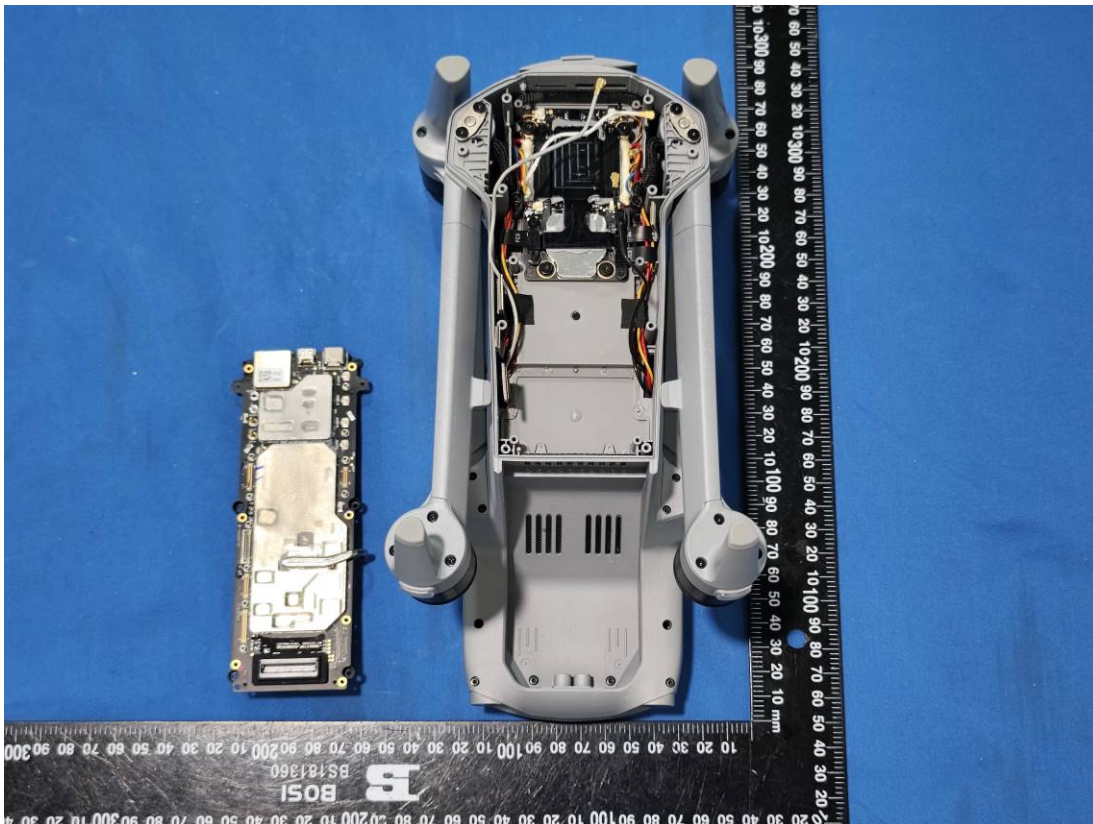
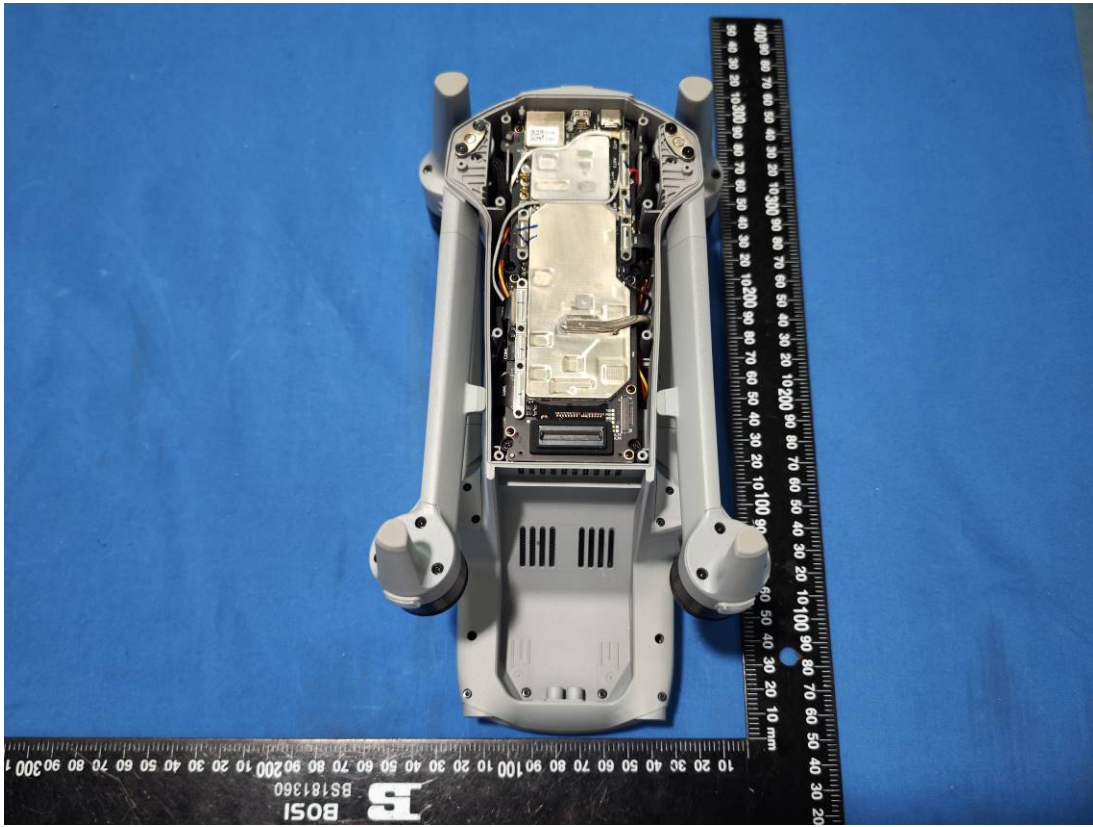
Bottom Radar

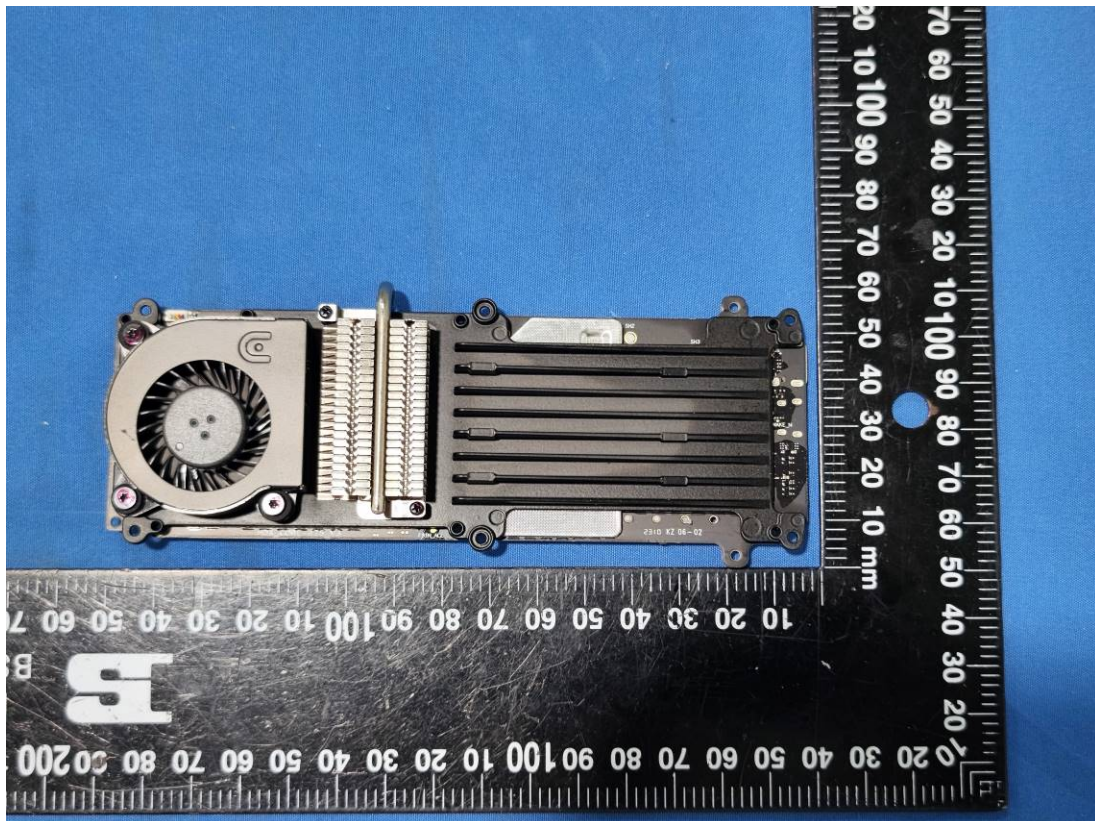
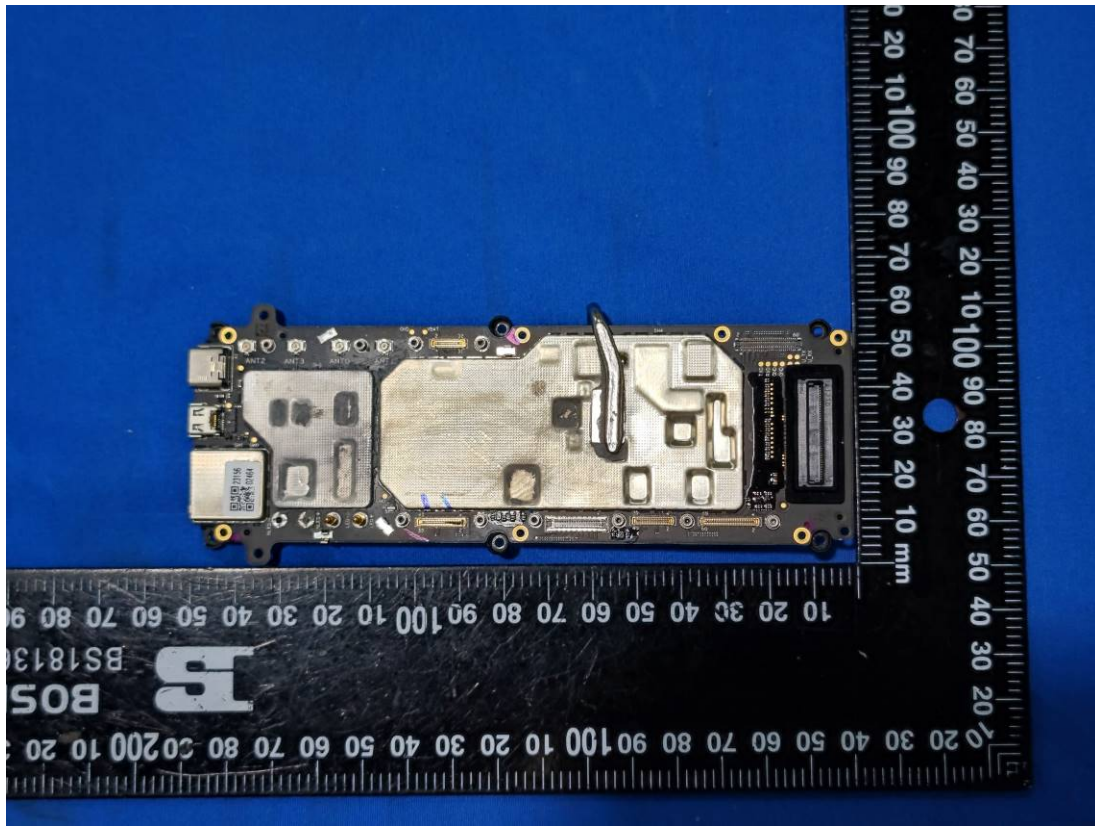


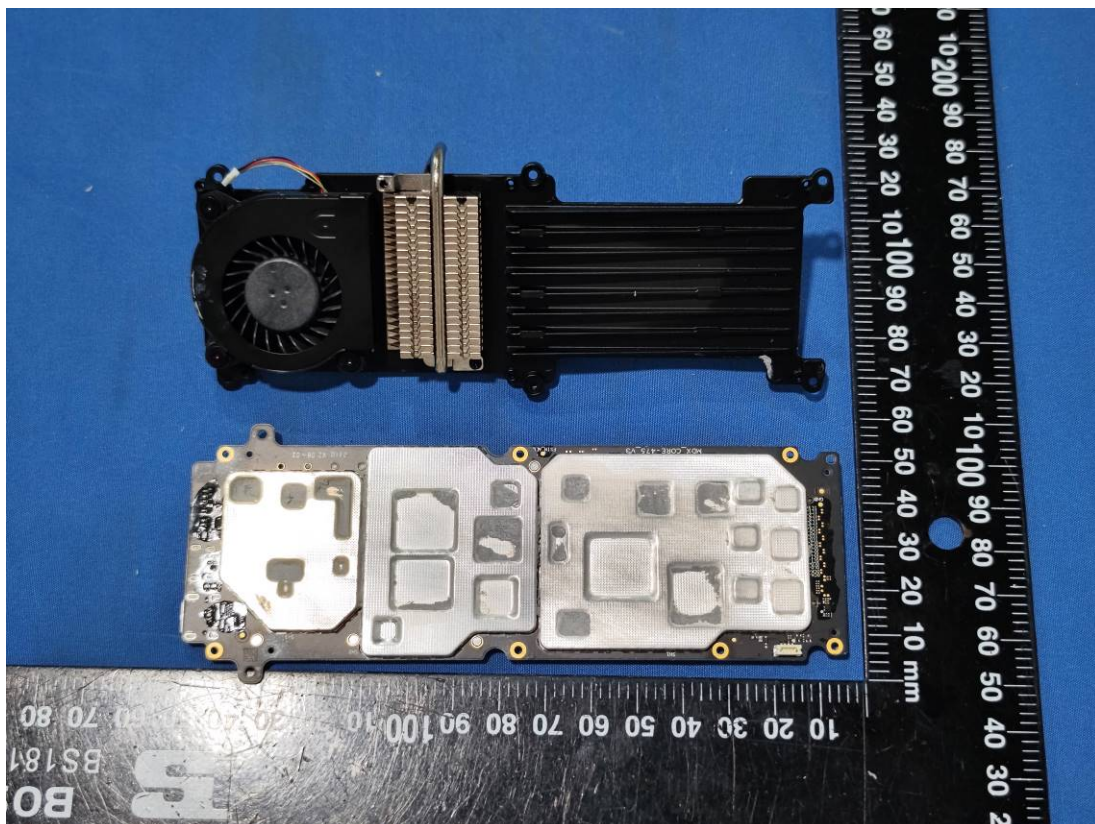
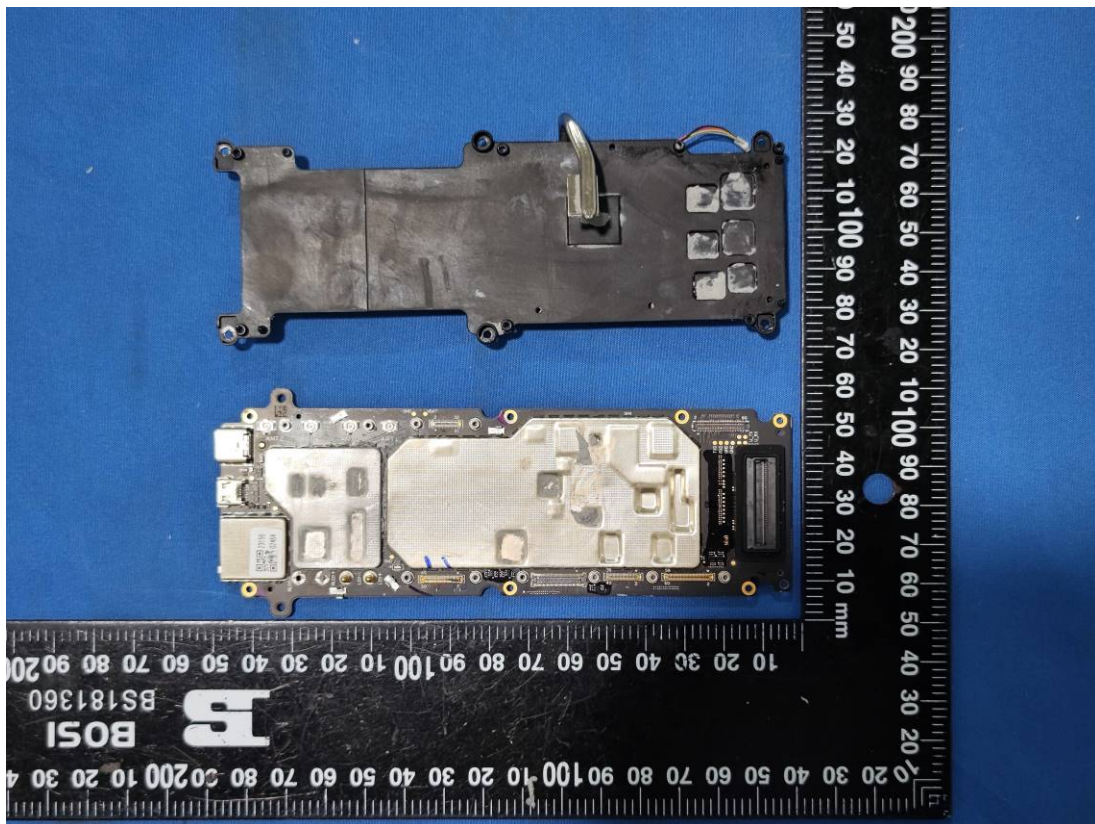
A photograph of a custom-designed printed circuit board (PCB) for a mobile phone. The PCB is white with gold-colored conductive traces and pads. It features a large black integrated circuit (IC) in the center, labeled 'CALLED 244-1E', 'MPN 03.00 M2', and 'D31415'. The board has several circular holes for mounting components and a small rectangular cutout at one end. The PCB is shown against a blue textured background.

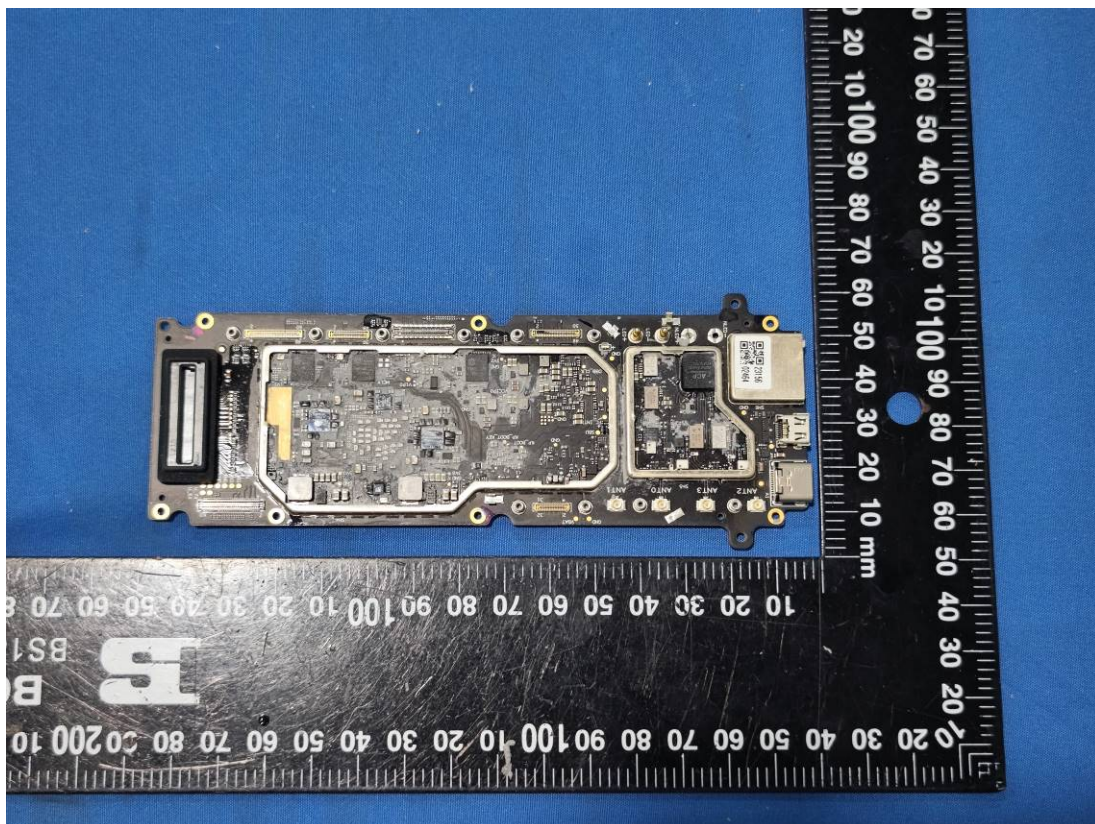
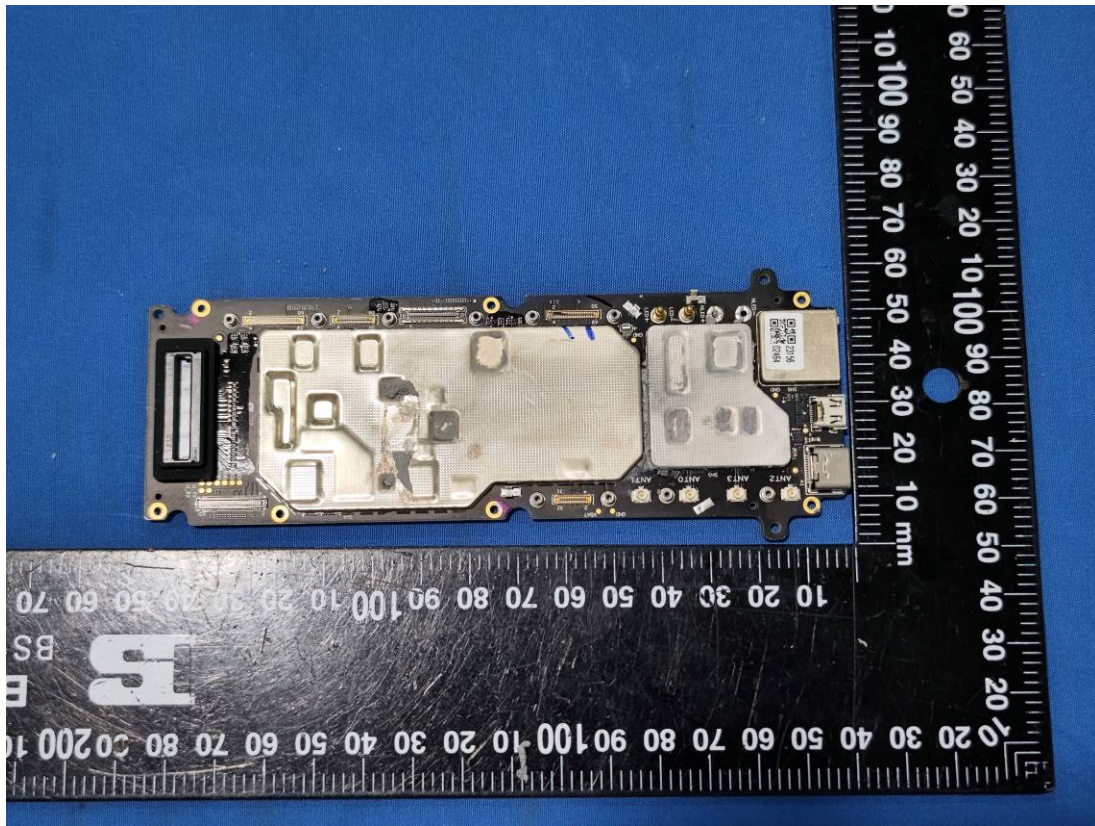


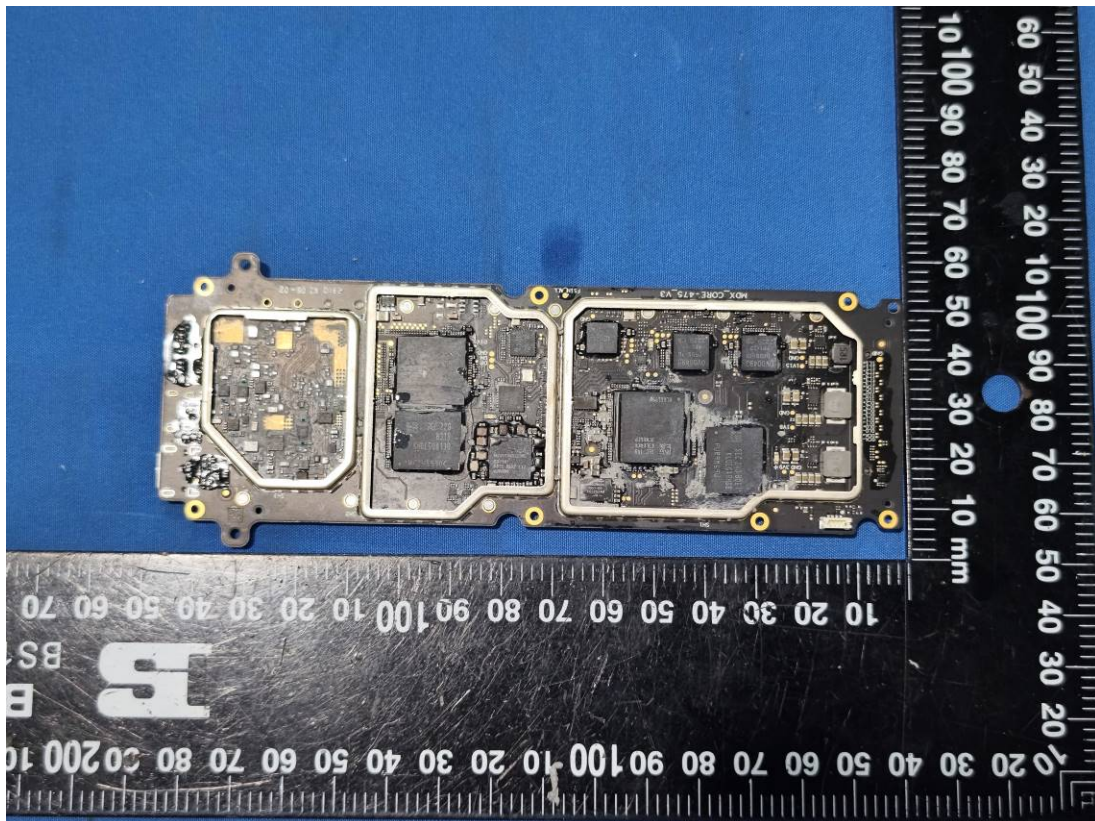
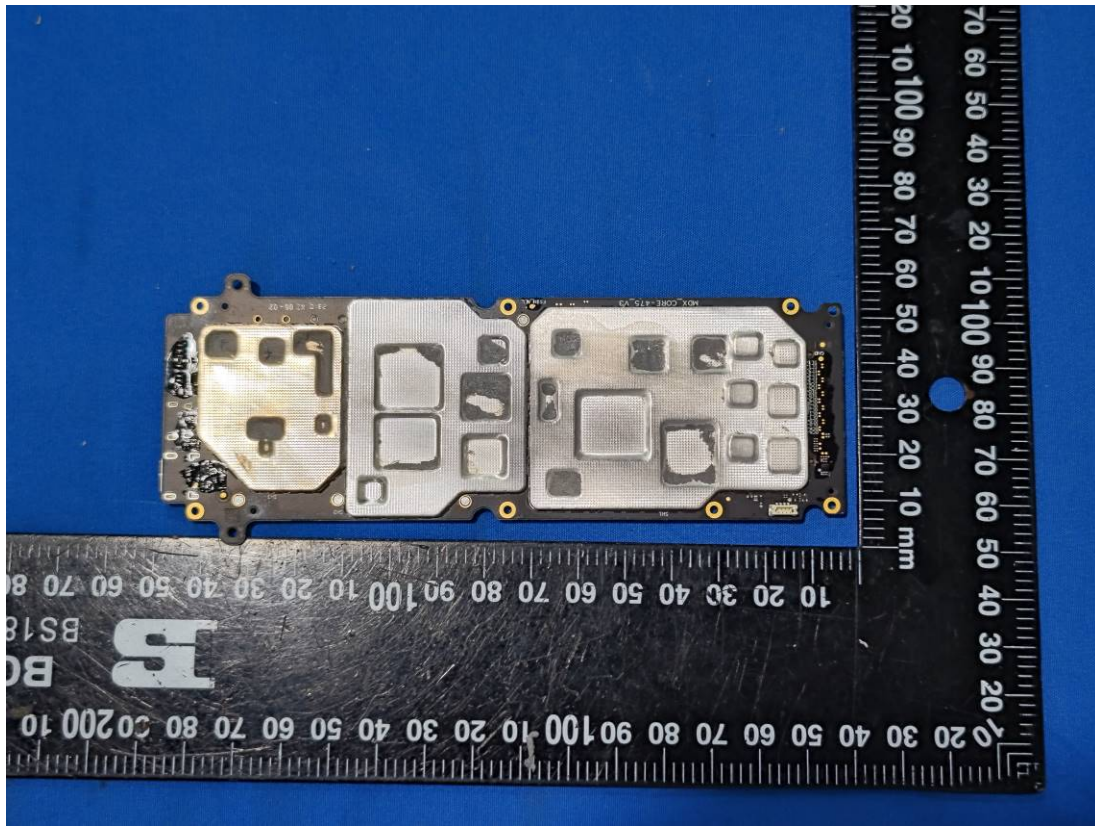


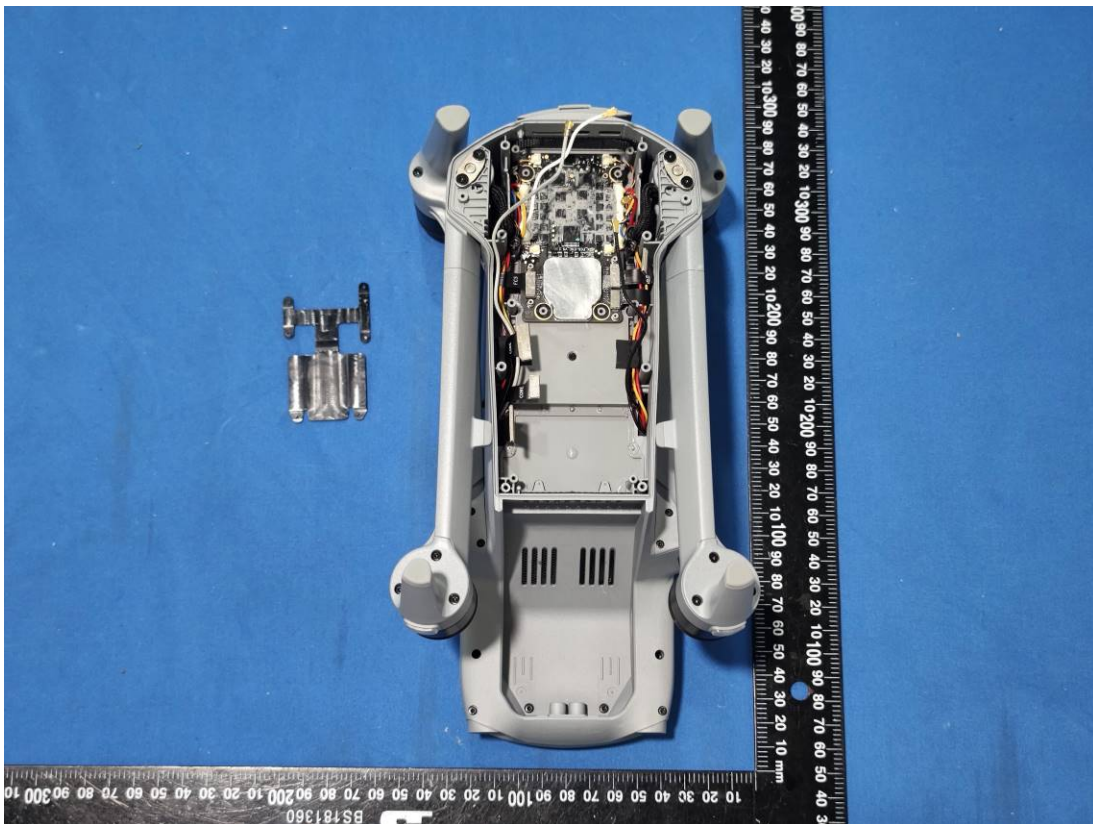
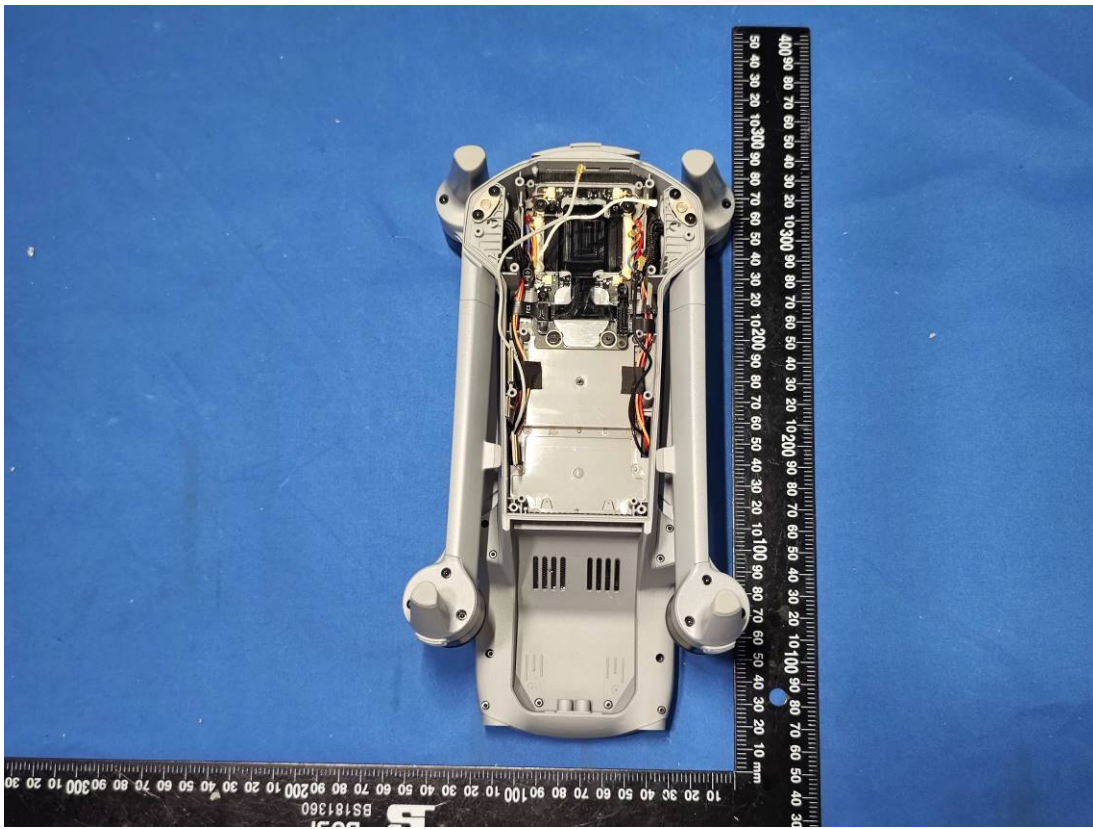


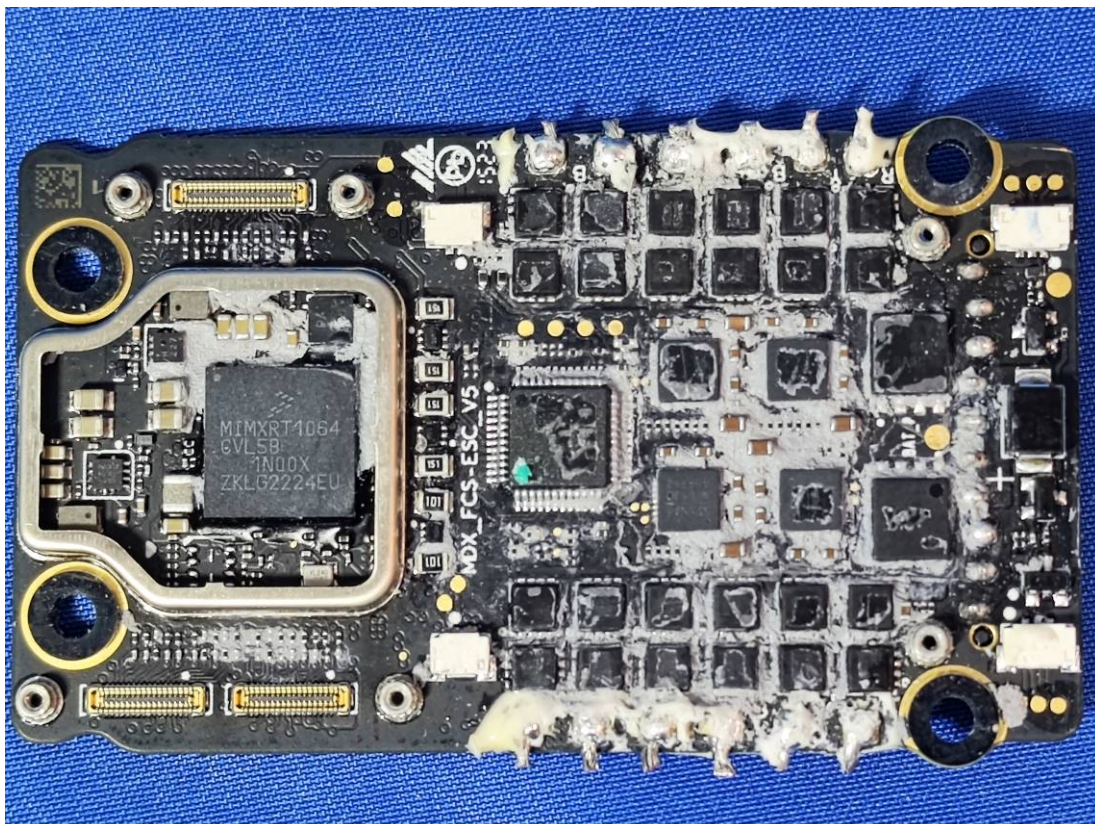
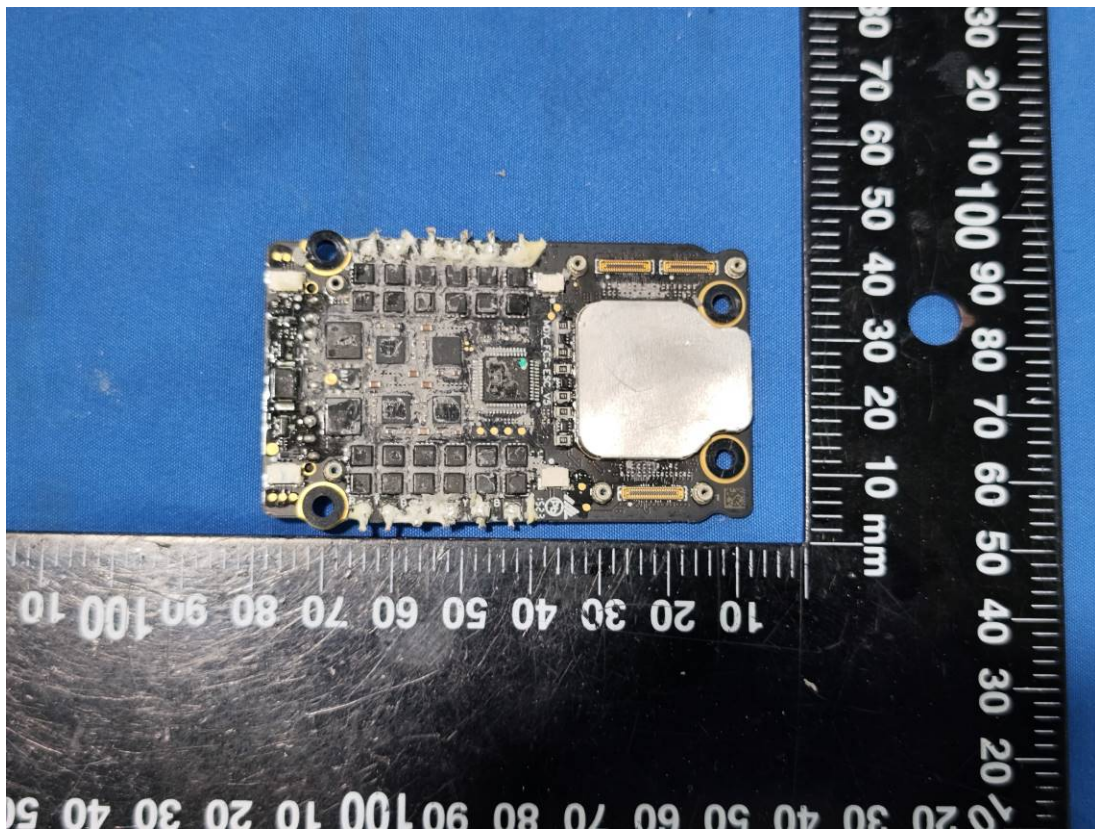


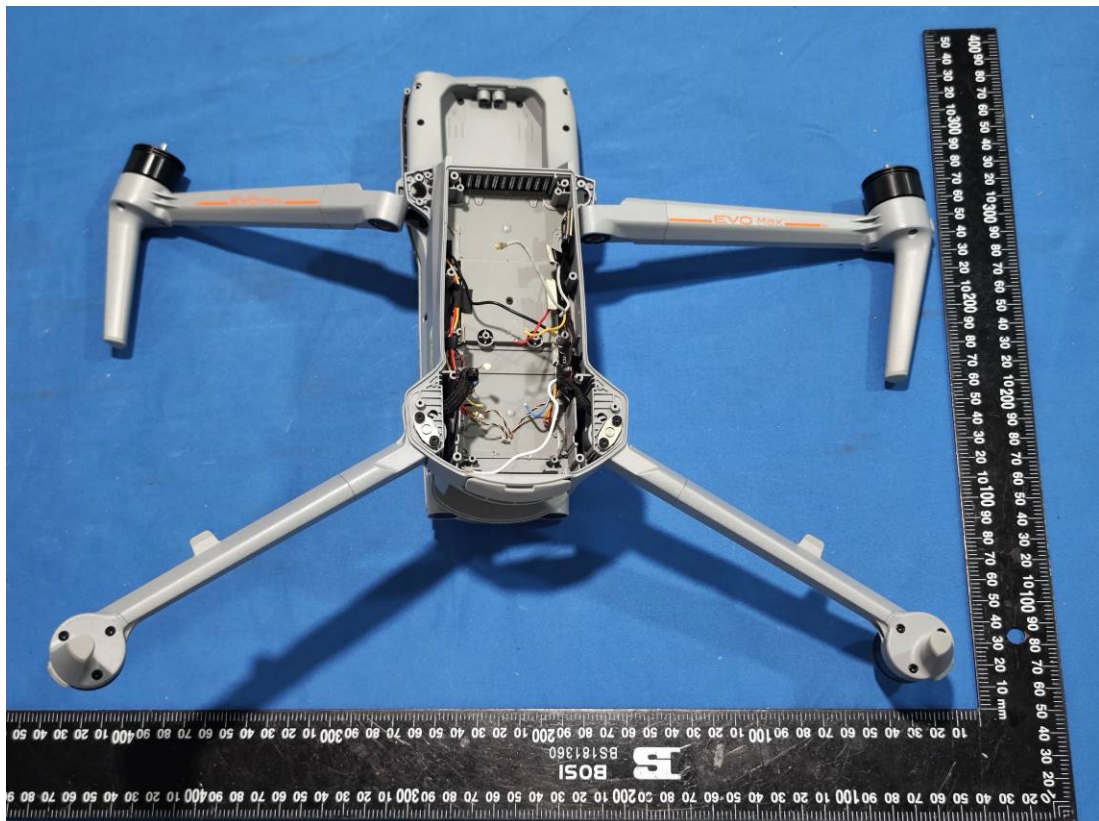
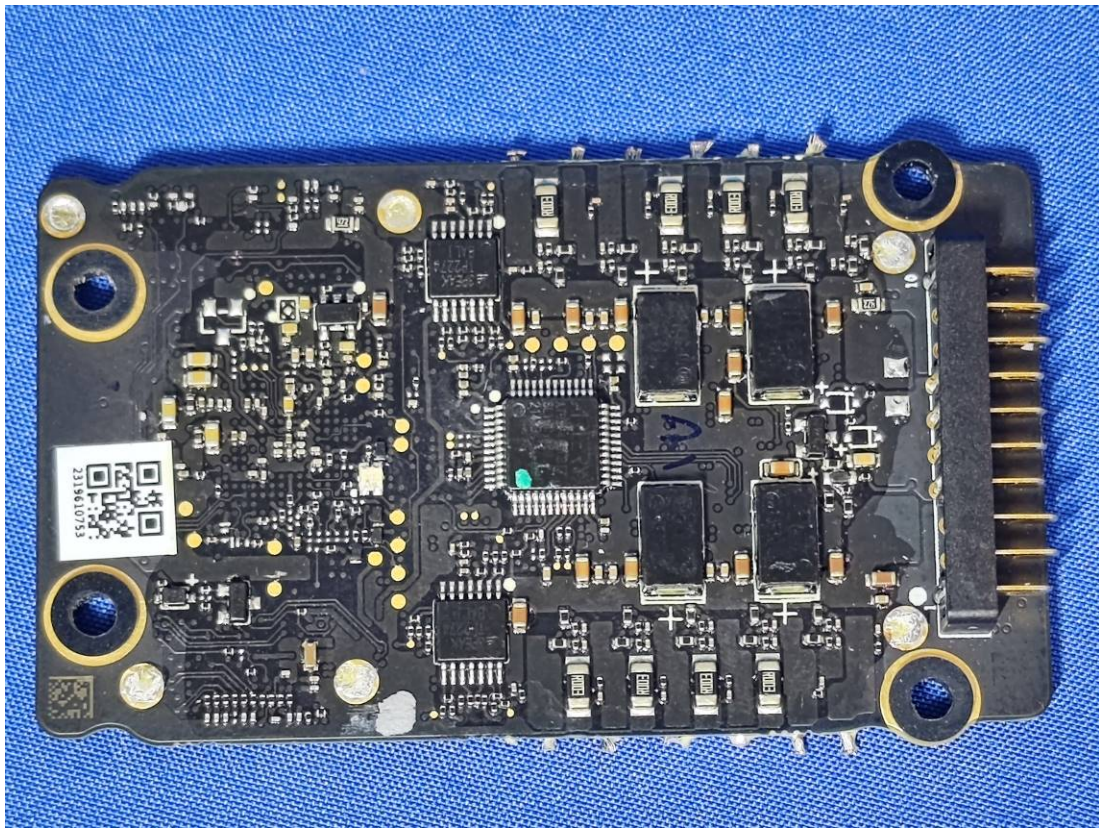








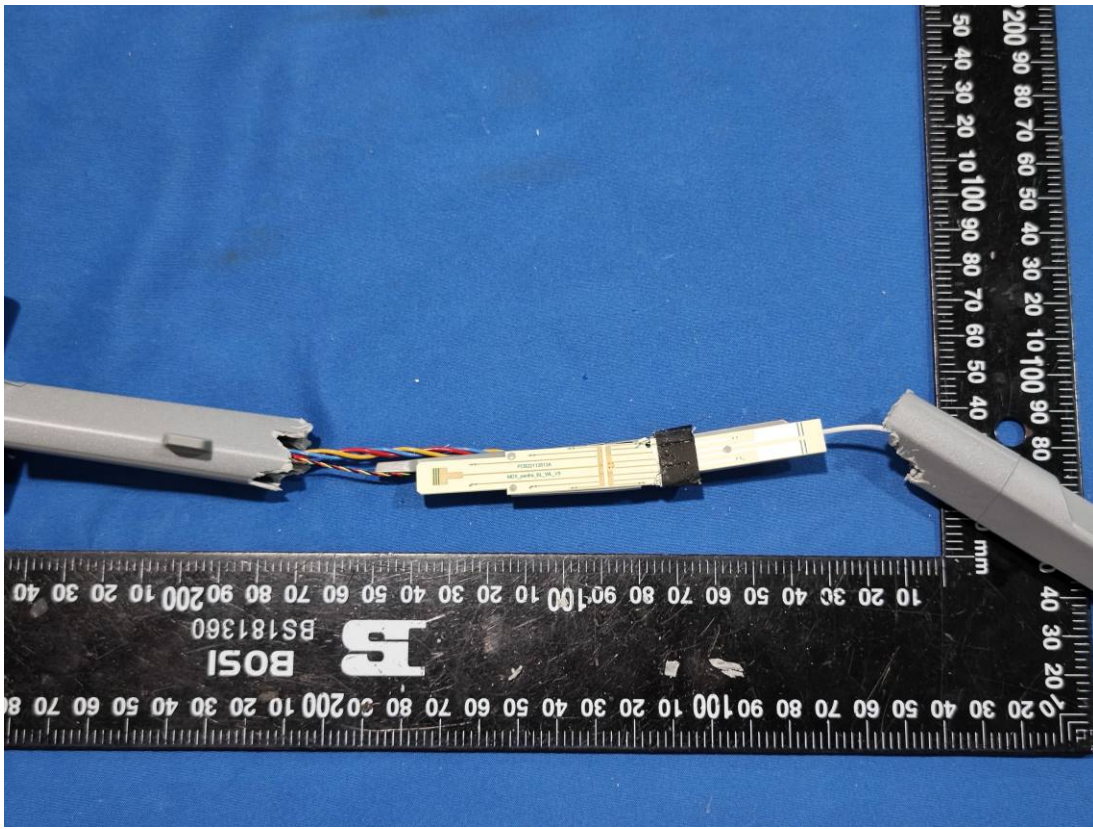






SRD Antenna 2(Front Left)





SRD Antenna 1(Back Left)

