

# Driver Installation

---

This chapter covers the installation of device drivers in the Windows XP environment. The step-by-step instructions provided in this chapter will help you install and configure the following drivers:

1. Video Adapter
2. Sound Controller
3. Network Adapter
4. PCMCIA Controller
5. Mouse (Touchpad)
6. Modem
7. Combo (Modem + Wireless Network (IEEE 802.11b) Adapter)

You can also perform a BIOS Update from the driver CD.

Insert the driver CD into the CD-ROM drive. The Driver Installation Guide will appear automatically. Follow the instructions in the Guide, or those below, to install the driver you want.

[Video Adapter](#)

[Sound \(Audio\) Adapter](#)

[Network Adapter](#)

[PCMCIA Controller - Cardbus Controller](#)

[PCMCIA Controller - ATA Patch](#)

[Mouse \(Touchpad\)](#)

[Modem \(for modem-only mini-PCI card equipped CY-25\)](#)

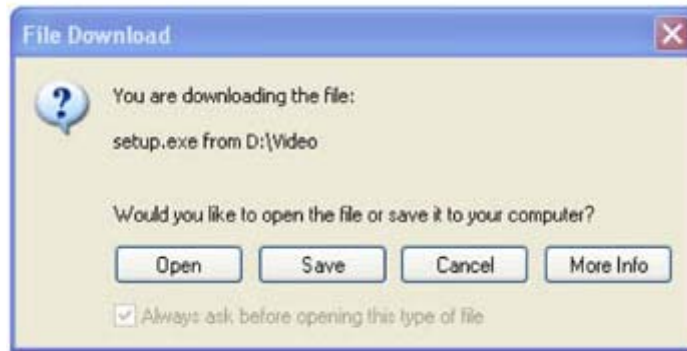
[Combo \(Modem + Wireless Network \(IEEE 802.11b\) Adapter\) \(for combo mini-PCI card equipped CY-25\)](#)

[BIOS Update](#)



## Video Adapter

1. Click the link in the Driver Installation Guide. The following dialog box will appear.



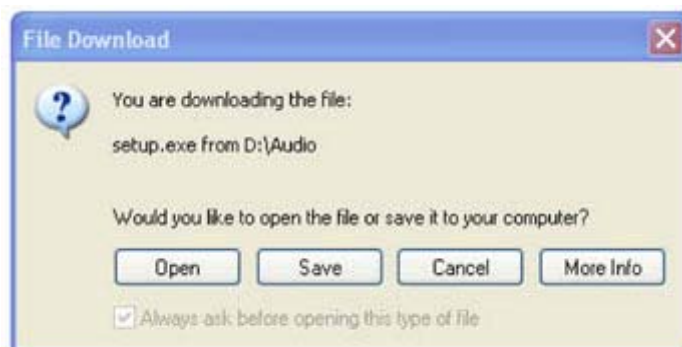
2. Click **Open**.
3. The setup program will launch. Follow the screen-by-screen instructions to install the driver.
4. When prompted, select "Yes, I want to restart my computer now." Click **Finish** to complete the installation. Your computer will restart with the new driver properly installed.

[Top](#)



## Sound (Audio) Adapter

1. Click the link in the Driver Installation Guide. The following dialog box will appear.



2. Click **Open**.
3. The setup program will launch. Follow the screen-by-screen instructions to install the driver.

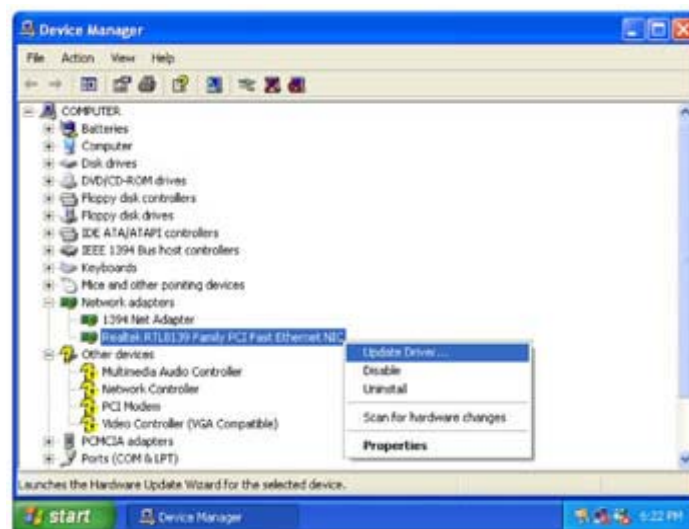
4. When prompted, select "Yes, I want to restart my computer now." Click **Finish** to complete the installation. Your computer will restart with the new driver properly installed.

[Top](#)



## Network Adapter

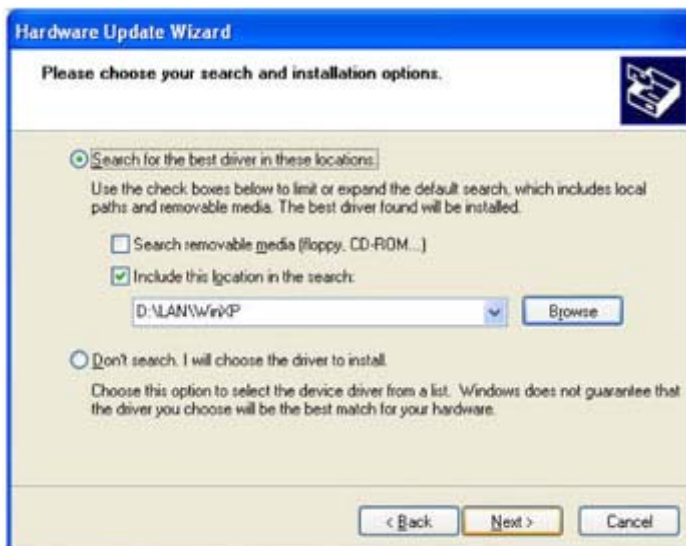
1. Open "System Properties" by right clicking "My Computer" and choosing "Properties".
2. Open the "Hardware" tab.
3. Click "Device Manager".
4. Open the "Network adapters" catalogue.
5. Right click "Realtek RTL8139 Family PCI Fast Ethernet NIC" and select "Update Driver..."



6. Select "Install from a list or specific location (Advanced)" and click "Next".



7. Uncheck "Search removable media (floppy, CD-ROM...)" and check "Include this location in the search:". Then click "Next".



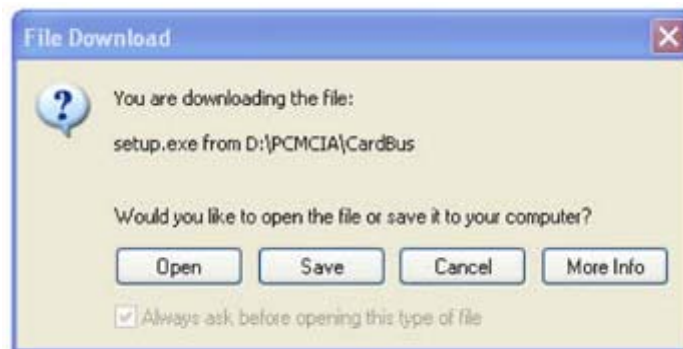
8. Click "Finish" when prompted to complete the installation



[Top](#)

## PCMCIA Controller - Cardbus Controller

1. Click the link in the Driver Installation Guide for the CardBus Controller. The following dialog box will appear.

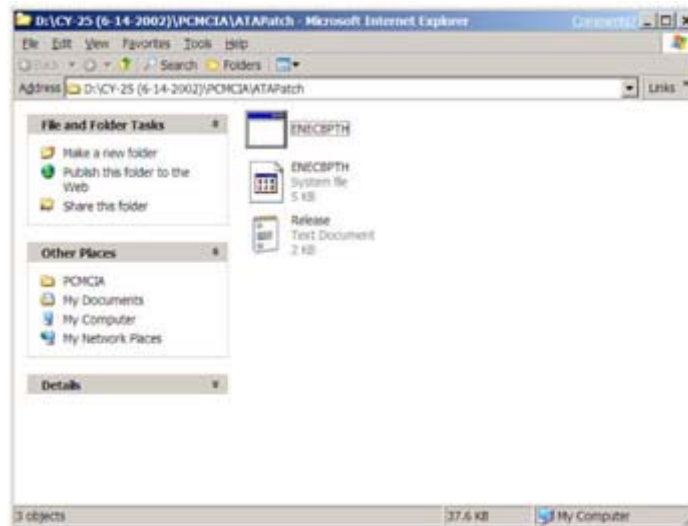


2. Click **Open**.
3. The setup program will launch. Follow the screen-by-screen instructions to install the driver.
4. When prompted, select "Yes, I want to restart my computer now." Click **Finish** to complete the installation. Your computer will restart with the new driver properly installed.

[Top](#)

## PCMCIA Controller - ATA Patch

1. Users will receive the following window when clicking the link from Driver Installation Guide:



2. Double click ENECBPTH.EXE (not the one marked as "System file") to setup. Users will be receiving a dialog (listed as below). Click "OK" to restart computer and the installation is end then.

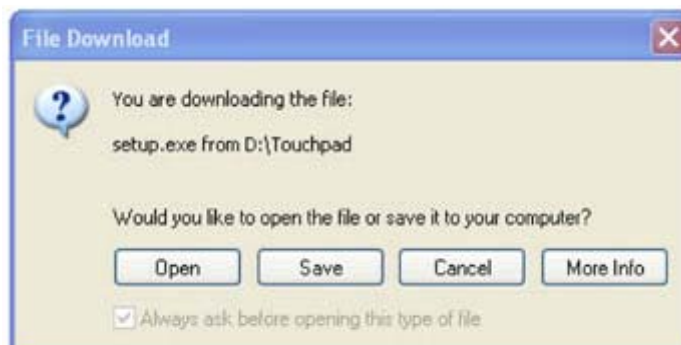


[Top](#)



## Mouse (Touchpad)

3. Click the link in the Driver Installation Guide for the Mouse (Touchpad) Controller. The following dialog box will appear.



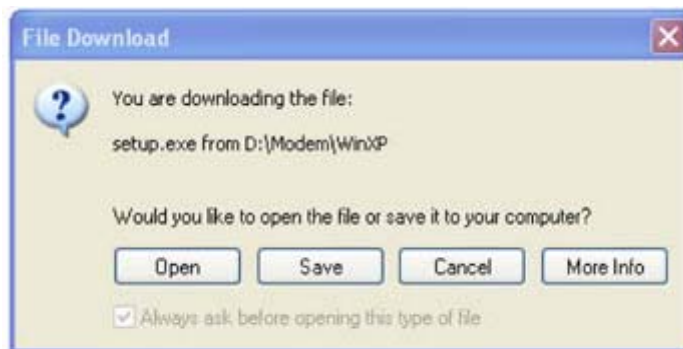
4. Click **Open**.
5. The setup program will launch. Follow the screen-by-screen instructions to install the driver.
6. When prompted, select "Yes, I want to restart my computer now." Click **Finish** to complete the installation. Your computer will restart with the new driver properly installed.

[Top](#)



### Modem (for modem-only mini-PCI card equipped CY-25)

1. Click the link in the Driver Installation Guide for the Modem (Touchpad) Controller. The following dialog box will appear.



2. Click **Open**.
3. The setup program will launch. Follow the screen-by-screen instructions to install the driver.
4. When prompted, select "Yes, I want to restart my computer now." Click **Finish** to complete the installation. Your computer will restart with the new driver properly installed.

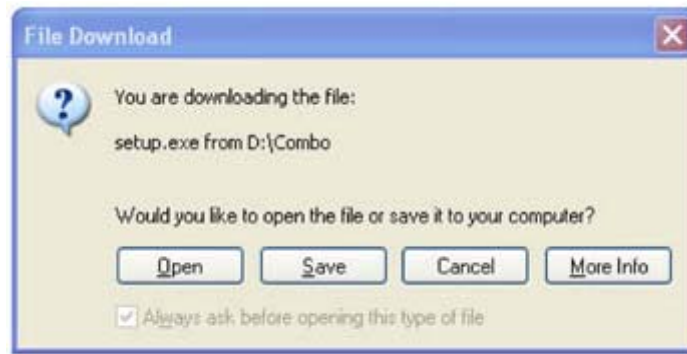
[Top](#)



### Combo (Modem + Wireless Network (IEEE 802.11b) Adapter) (for combo mini-PCI card equipped CY-25)

1. Click the link in the Driver Installation Guide for the Mouse Combo

Controller. The following dialog box will appear.



2. Click **Open**.
3. The setup program will launch. Follow the screen-by-screen instructions to install the driver.
4. When prompted, select "Yes, I want to restart my computer now." Click **Finish** to complete the installation. Your computer will restart with the new driver properly installed.

[Top](#)

## BIOS Update

1. Insert a bootable floppy diskette into the FDD.
2. Click on the Start menu and select Windows Explorer.
3. Select "My Computer".
4. Open the Bios folder on the CD-ROM.
5. Select each of the files in the BIOS folder. Right click **Send To** and then choose 3½ **Floppy**.
6. Boot laptop computer from the floppy diskette mentioned in Step 1.
7. Make sure the AC adapter is connected and run the **CBIOS rom\_file** from the DOS prompt.
8. The program will start to update BIOS and reboot automatically.
9. Press F2 to enter BIOS Setup Menu then press F9 to load default settings of factory. Press F10 to save settings and exit.



*If, for some reason, you cannot access the Driver Installation Guide, you can also launch any of the setup programs in the following way:*

1. Make sure the driver CD is in the CD-ROM drive.
2. Click the Start button on the Windows desktop, then select Run...
3. **Either:** Use **Browse** to locate the setup file for the driver you want. The setup files for each driver are stored in the driver's separate directory on the disk. Assuming the CD-ROM Drive letter is "D", the setup file locations are:

⇒ D:\Audio\Setup.exe

⇒ D:\Combo\Setup.exe

⇒ D:\Modem\WinXP\Setup.exe

⇒ D:\PCMCIA\Cardbus\Setup.exe

⇒ D:\PCMCIA\ATAPatch\enecbpth.exe

⇒ D:\Touchpad\Setup.exe

⇒ D:\Video\Setup.exe

**Or:** Type in the setup file location.

4. Now click OK. The setup program will launch. Follow the screen-by-screen instructions to install the driver.
5. When prompted, select "Yes, I want to restart my computer now." Click **Finish** to complete the installation. Your computer will restart with the new video driver properly installed.

[Top](#)