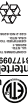


Go to [www.vtechphones.com](http://www.vtechphones.com) to register your product for enhanced warranty support and the latest Vtech product news.



## vtech®

### Quick start guide



Power requirements	
Parent unit power adapter: Output: 5V DC 1A	
Baby unit power adapter: Output: 4V DC 500mA	
Nominal effective range	
Maximum power received by FCC and C: Actual operating range may vary according to environmental conditions at the time of use.	
LCD	
Parent unit LCD: 2.8" TFT Color LCD (1024x480 pixels)	
Child's unit LCD: 2"	
Channels	
32	
Transmit frequency	
Baby unit: 2403 - 2425 MHz	
Parent unit: 2403 - 2425 MHz	
Frequency control	
Crystal controlled PLL synthesizer	

## TECHNICAL SPECIFICATIONS

## BASIC OPERATION - PARENT UNIT

### Use the menu

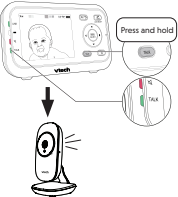
Press **MENU** to enter the menu, or save a setting. You can use the parent unit for advanced settings or operations, such as to play or stop the baby unit's lullaby, or to adjust the baby unit's sound sensitivity.

### While in the menu:

- Press **Left** or **Right** to scroll among the menu options.
- Press **SELECT** or **Enter** to enter the desired submenu.
- Press **Left** or **Right** to select an item.
- Press **SELECT** to confirm your selection.
- Press **Exit** or **Back** to exit the submenu.

### Talk to your baby unit

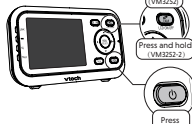
Press and hold **TALK** and speak to your parent unit. Your voice is transmitted to the baby unit. Release **TALK** when done talking to hear your baby again.



### Turn off the screen

- Press **Power**.
- OR
- Press **LCD ON/OFF** (VM3252);
- Press and hold **LCD ON/OFF** (VM3252-2) to switch off the screen.

You can still hear sound from the selected baby unit.



**Tip**  
Press any key on the parent unit to turn on the screen again.

## IMPORTANT SAFETY INSTRUCTIONS

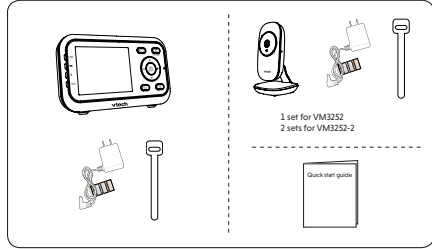
The applied nameplate is located at the bottom of the baby unit's base. Basic safety precautions should be followed when using this product. Read and understand the following instructions, electric shock and injury, including the following:

- Follow all warnings and instructions marked on the product.
- CAUTION: Fire is required.
- CAUTION: Do not install the baby unit at a height above 2 meters.
- This product is not a substitute for adult supervision. The parent unit should be used with caution. The parent unit is not designed to be used as a continuous working device for any given period of time. Further, this is not a medical device and should not be used as such. This product is intended to assist you in supervising your baby.
- Do not use this product near water, for example, near a bath, sink, swimming pool or shower.
- CAUTION: Use only the battery provided. There may be a risk of explosion if a wrong type of battery is used for the parent unit. The battery cannot be adapted to high or low extreme temperature and low air pressure at high altitude during use, storage or transport. Disposal of battery to fire or a hot oven, mechanically crushing or cutting of the battery can result in an explosion. Leaving the battery in an extremely high temperature surrounding environment can result in an explosion or the leakage of flammable liquid of gas. Battery subjected to extremely low air pressure may result in an explosion or the leakage of flammable liquid of gas. Dispose of used batteries according to the information in **The REBIC** seal.
- Use only the power adapters included with the product. Incorrect power adapter polarity or voltage can seriously damage the product.

- SAVE THESE INSTRUCTIONS**
- Use and store the product at a temperature between 32°F and 104°F.
  - Do not expose this product to extreme cold, heat or direct sunlight. Do not put the product close to a heating source.
  - Batteries should not be exposed to excessive heat such as bright sunshine or fire.
  - Warning-Strangulation Hazard—Children have STRANGLED to death. Keep this cord out of the reach of children more than 3 ft (1 m) away. Do not remove warning label on the adapter cord.
  - Never place the baby unit inside the baby's crib or playpen. Never cover the baby unit or parent unit with anything such as a towel or a blanket.
  - Other electronic products may cause interference with your baby monitor. Try installing your baby monitor as far away from these electronic devices as possible: wireless routers, radios, cellular telephones, intercoms, room monitors, televisions, personal computers, kitchen appliances and cordless telephones.

- Precautions for users of implanted cardiac pacemakers**  
Cardiac pacemakers (except only to digital cordless devices) Wireless Technology Research, LLC (WTR), an independent research entity, has a multidisciplinary evaluation of the interference between portable wireless devices and implanted cardiac pacemakers. Supported by the U.S. Food and Drug Administration, WTR recommends to physicians that:
- Pacemaker patients**
- Should not use wireless devices at least six inches from the pacemaker.
  - Should NOT place wireless devices directly over the pacemaker, such as in a breast pocket, when it is turned ON. WTR's evaluation did not identify any risks to bystanders with pacemakers from other persons using wireless devices.
- This Vtech product complies with all standards regarding electromagnetic fields (EMF). If handled properly and according to the instructions in this user manual, the product is safe to be used based on scientific evidence available today.

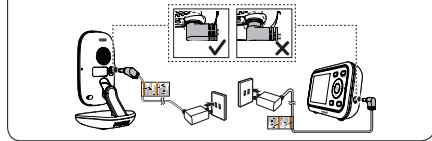
## WHAT'S IN THE BOX



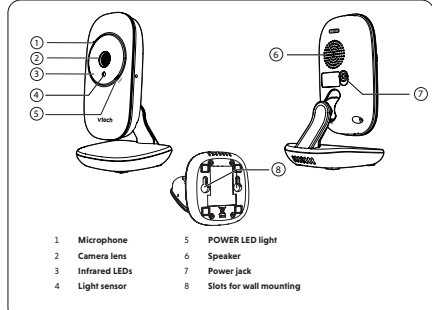
## 1 CONNECT THE BABY MONITOR

### NOTES

- The rechargeable battery in the parent unit is built-in.
- Use only the power adapters supplied with this product.
- Make sure the baby monitor is not connected to a switch-controlled electric outlet.
- Connect the power adapters in a vertical or floor mount position only. The adapters' prongs are not designed to hold the weight of a baby monitor, so do not connect them to any ceiling, under-the-table, or cabinet outlets. Otherwise, the adapters may not properly connect to the outlets.
- Make sure the parent unit, the baby units and the power adapter cords are out of reach of children.
- To maintain compliance with the FCC's RF exposure guidelines, place the baby unit at least 20cm from nearby persons.



## OVERVIEW - BABY UNIT



## NEED HELP?

For operations and guides to help you using your video monitor, and for latest information and supports, go and check the online help topics and online FAQs.

Use your smartphone or mobile device to access our online help.

- Go to <https://help.vtechphones.com/VM3252> or <https://help.vtechphones.com/VM3252-2>, or
- Scan the QR code on the right. Launch the camera app or QR code scanner app on your smartphone or tablet. Hold the device's camera up to the QR code and frame it. Tap the notification to trigger the redirection of the online help.
- If the QR code is not clearly displayed, adjust your camera's focus by moving your device closer or further away until it is clear.

You can also call our Customer Support at 1 (800) 595-9511 (in US) or 1 (800) 267-7377 (in Canada) for help.

## 1 CONNECT THE BABY MONITOR (CONT'D)

### Charge the parent unit battery

When you have connected and turned on the parent unit, the battery will be charged automatically.

### NOTES

- Before using the baby monitor for the first time, charge the parent unit battery for 12 hours. When the parent unit battery is fully charged, the battery icon becomes solid.
- It takes longer to charge the battery when the parent unit is turned on. To shorten the charging time, turn the parent unit off while charging.
- The standby time varies depending on the sensitivity level you set, your actual use and the age of the battery.

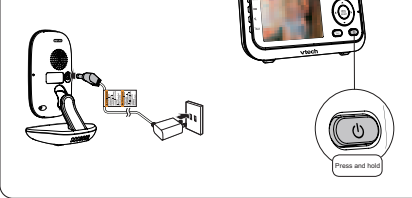
The battery icon indicates the battery status (see the following table).

BATTERY INDICATORS	BATTERY STATUS	ACTION
The screen displays	The battery has very little charge and may be used for only a short time.	Charge without interruption (about 30 minutes).
The battery icon becomes solid	The battery is fully charged.	To keep the battery charged, connect it to AC power when in use.

## 2 POWER ON OR OFF THE BABY MONITOR

### 1 Baby Unit turns on automatically after it connects to the power socket.

Disconnect from the power supply to power off.



## PARENT UNIT ICONS

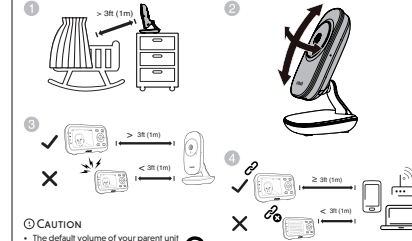
### Status icons

- Connection status**
  - displays when strong signal strength is detected between the baby unit and the parent unit.
  - or displays when moderate or low signal strength is detected between the baby unit and the parent unit.
- Patrol mode**
  - Displays when the parent unit is in **PATROL** mode (For VM3252-2 only).
- Current view status**
  - Displays the baby unit number of the baby unit that is being viewed.
- Zoom**
  - Displays when the current image on the parent unit has zoomed in.
- Night vision**
  - Displays when the baby unit being viewed has activated the night vision feature.
- Talkback**
  - Displays when talking back to the baby units from parent unit.
- Lullaby**
  - Displays when a lullaby is playing.
- Mute alert**
  - Displays when the parent unit speaker volume is set to zero.
  - Displays when the parent unit is talking to the baby unit.
- Real-time temperature**
  - Displays the real-time temperature detected by the baby unit in Fahrenheit (°F) or Celsius (°C) (e.g. 37°F or 14°C).
- Battery status**
  - displays when the battery is fully charged.
  - displays when the battery is low and needs charging.

## 3 POSITIONING THE BABY MONITOR

### CAUTION

- Keep the baby unit out of the reach of your baby. Never place or mount the baby unit inside the baby's crib or playpen.



### CAUTION

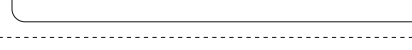
- The default volume of your parent unit is level 3, and the maximum volume is level 5. If you experience feedback noise from your baby monitor while positioning:
  - Make sure your baby unit and parent unit are more than 3 feet (1 meter) apart, OR
  - Turn down the volume of your parent unit.

To avoid interference from other electronic devices, place your baby monitor at least 3 feet (1 meter) away from devices such as wireless routers, microwaves, mobile phones and computers.

## 4 STATUS CHECK

Once you power on both your baby unit and parent unit, your parent unit displays images from the baby unit, and the **LINK** LED light turns on.

The baby unit **POWER** LED light turns on.



## Main menu icons

### Main menu

### Sub-menu

### Brightness

- Adjust the parent unit's LCD screen brightness level.

### Screen off timer

- The parent unit display will dim to conserve energy after your chosen amount of time of inactivity.

### Temperature

- Turn on/off temperature alert tone.

- Set the parent unit to beep whenever the room temperature detected by the baby unit falls outside of the set temperature range.

- Set the minimum/maximum temperature.

- Set temperature display in Fahrenheit (°F) or Celsius (°C).

### Sound-activated screen

- When it is on, and the baby unit detects no sound, the parent unit screen stays off to save power. Once a sound is detected, the parent unit screen and speaker turns on automatically, and you can see and hear your baby. The parent unit will then turn off again after 50 seconds of no sound detection.

### VOX (Voice Activated Alert) Sensitivity

- You can choose to hear sounds from the baby unit all the time, or to only hear sounds that exceed a certain level. Adjust the microphone sensitivity of your baby unit, the higher the sensitivity level, the more sensitive the baby unit is in detecting sounds to be transmitted to the parent unit. See **Sound sensitivity and sound activation** section.

