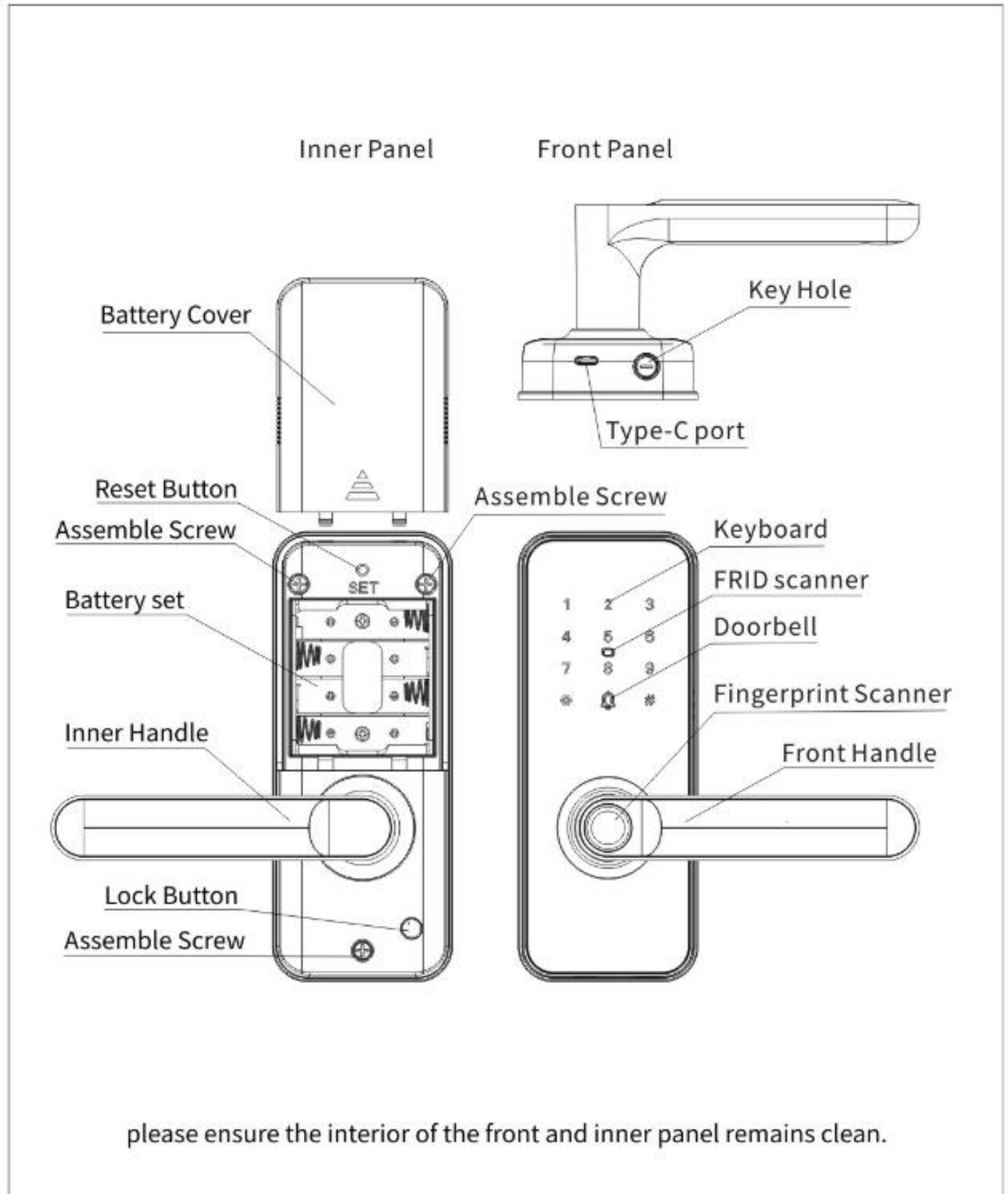


ZN-S06 User Manual

一、Product layout:



二. Product Features(According to actual model)

- Open Way: Fingerprint, Password, IC card, Key, Bluetooth, and etc. Bring new experience to open the door.
- Fingerprint: Advanced semiconductor sensors, 360 degrees identification angle, finger sensor size 10*108,508 dpi resolution, FRR (fingerprint rejection rate)<0.0001%, FAR(fingerprint accept rate)<0.03%.
- Password: Fashioned touch technology, Allow to put 1-12 digit numbers before and after true password.
- Capacity: fingerprint 100pcs, password 100pcs, card 100pcs (Total 250pcs mixed freely).
- Membership management: The Administrator have the highest right to lock setting (normal member allows to lock and unlock only).
- Alarm function: Low power alarm, Fake passwords alarm, Anti-pry alarm.
- External power supply: Please use power source or other equipment which is 5V to recharge for emergency when low power (Replace new battery once door is open).

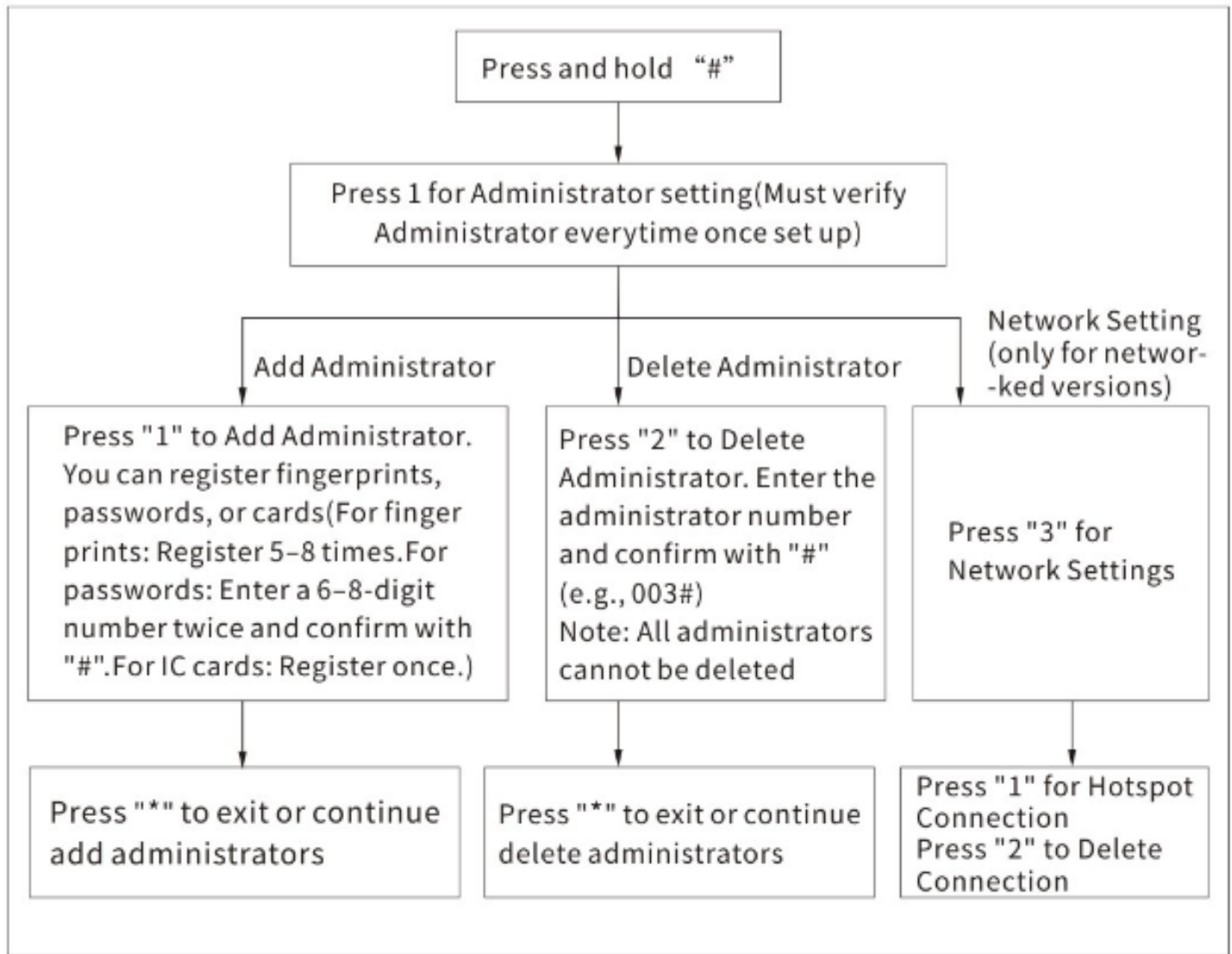
三. Remark

1. Please reset factory default and clear all member records immediately after lock installed.
2. Please use different and more angle when input fingerprint, Do attention to do with no hard.
3. We suggest to change battery at least in 6 months, in order to avoid smart lock damage because of exhausted battery.
4. The lock use 4*AA battery, When first time alarms "low battery, please replace battery", it can be open around 50 times more; But please replace immediately in order to avoid any inconvenience.
5. By continuous 5 times wrong input with fingerprint/password/card, lock will alarm, and locked for 90 seconds.

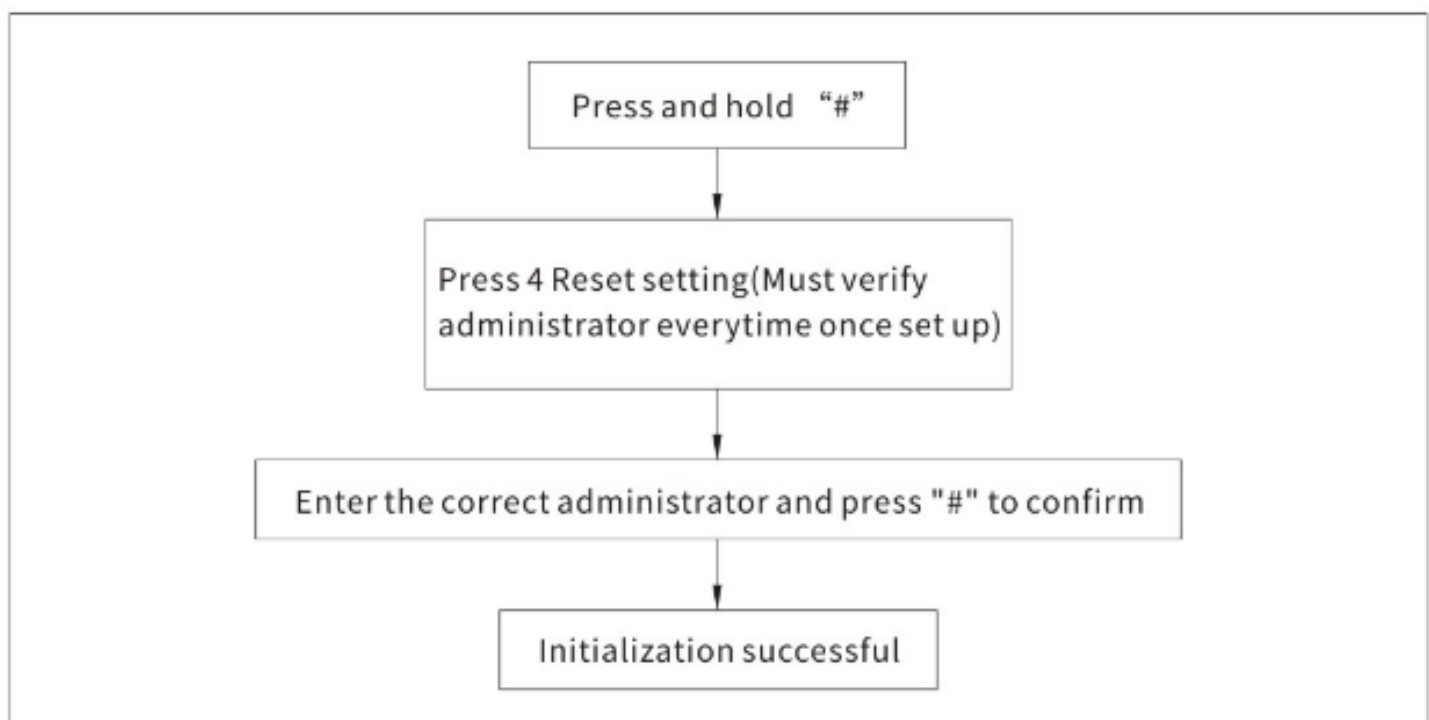
四. Guide:

Initialization Procedure: Remove the battery cover, press and hold RESET button for 6 seconds, voice guide "Initialization operation successful"

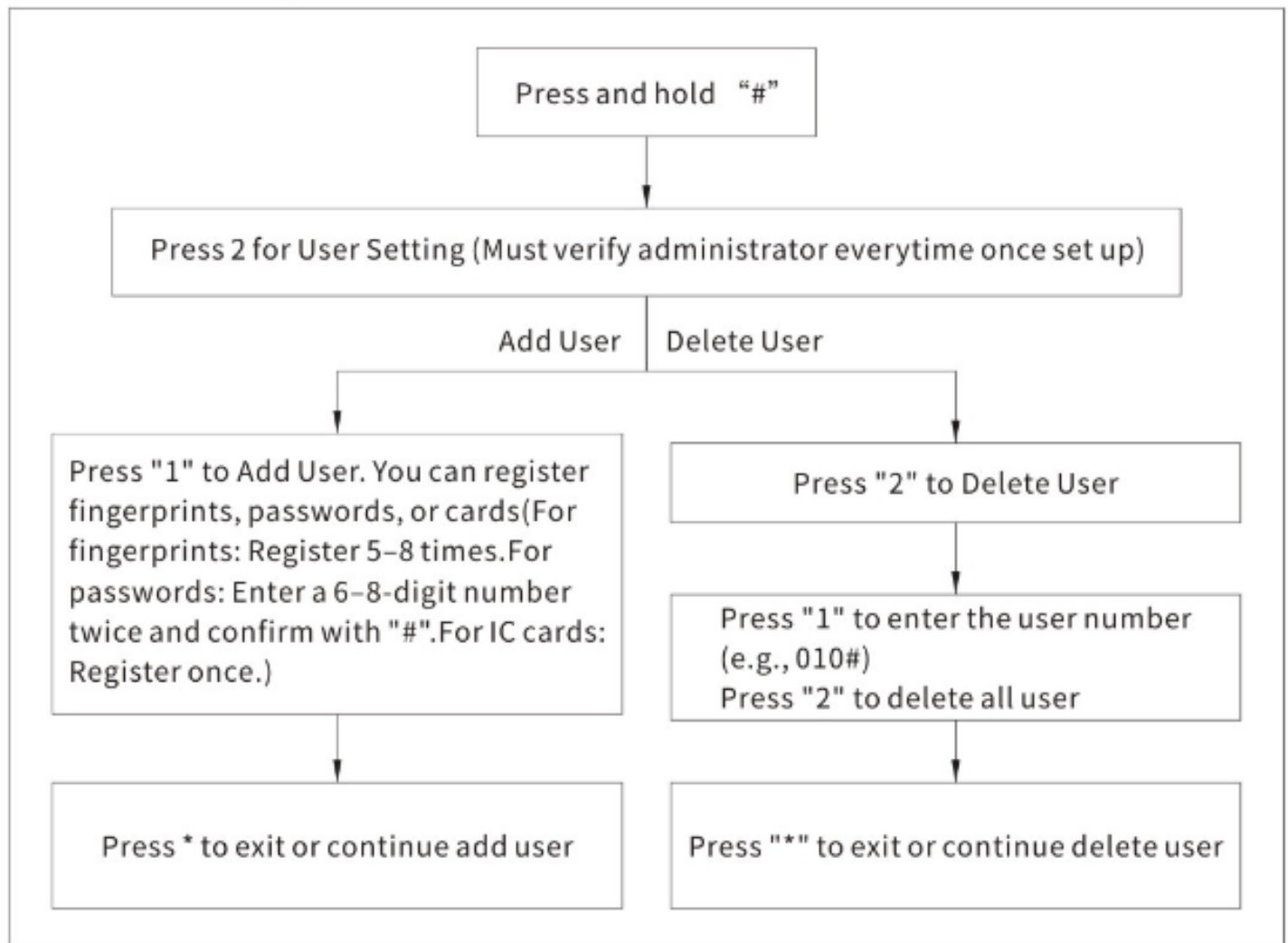
● Administrator setting:



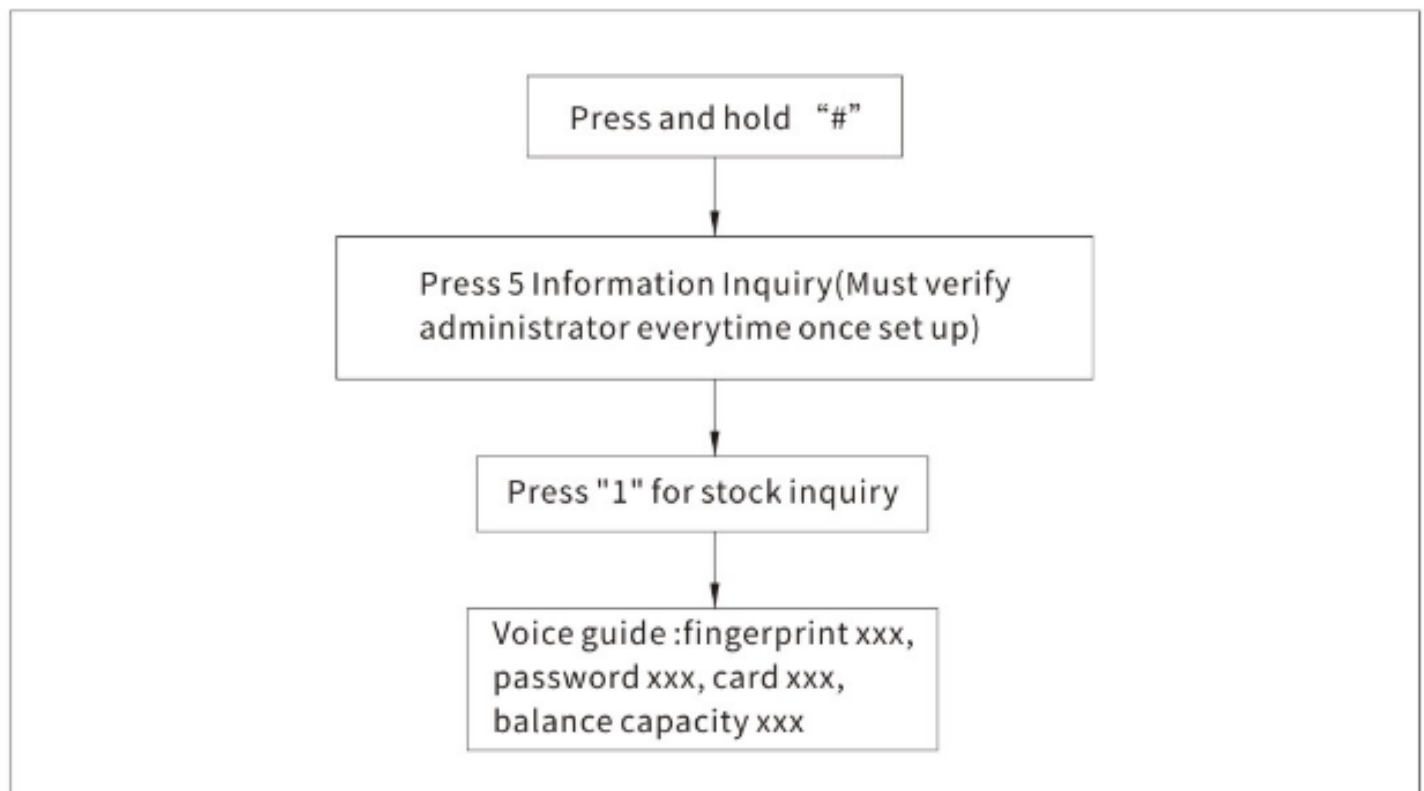
● Reset setting:



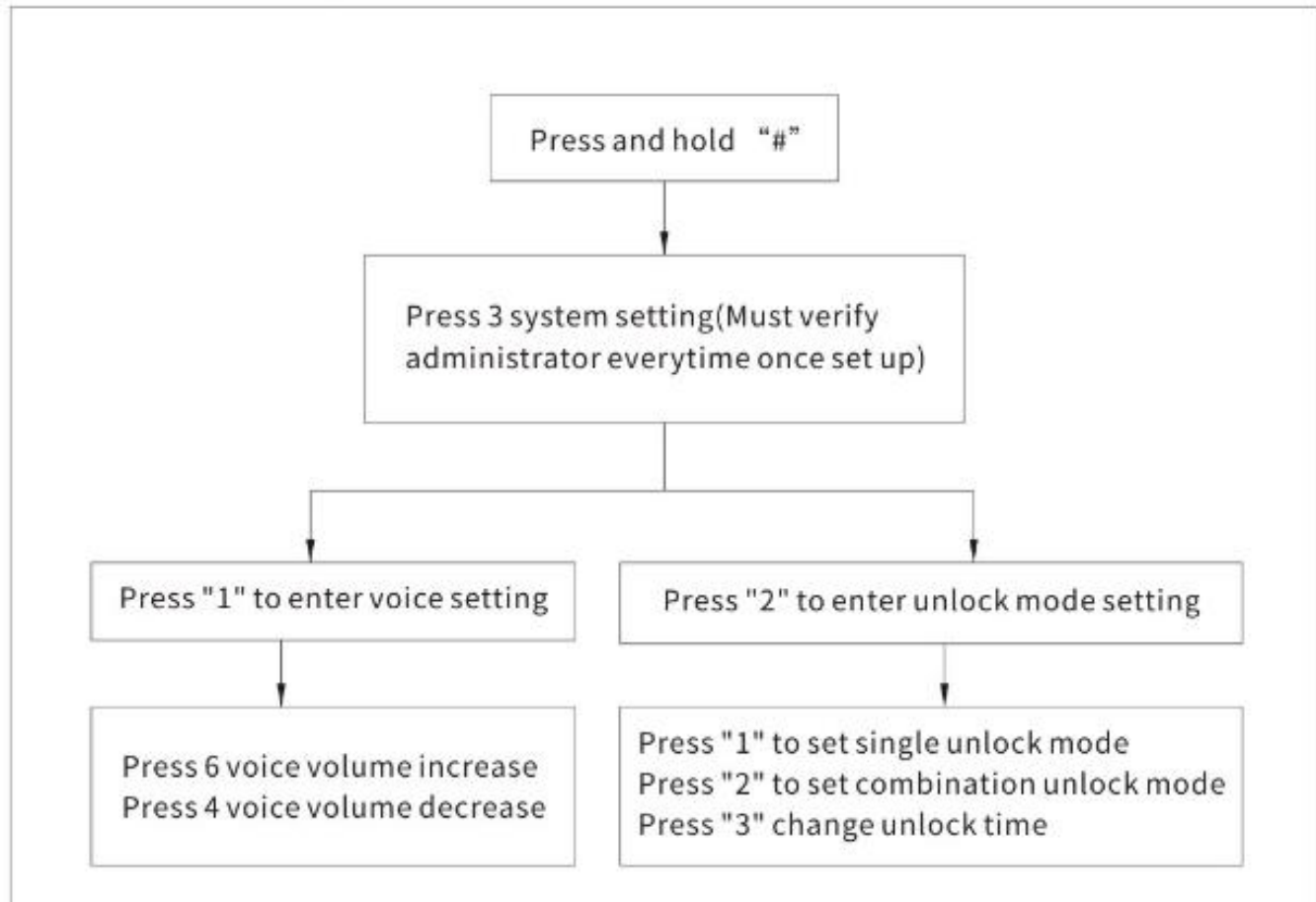
● User Setting:



● Information Inquiry:



● System Setting:



5. Bluetooth connecting(two ways):

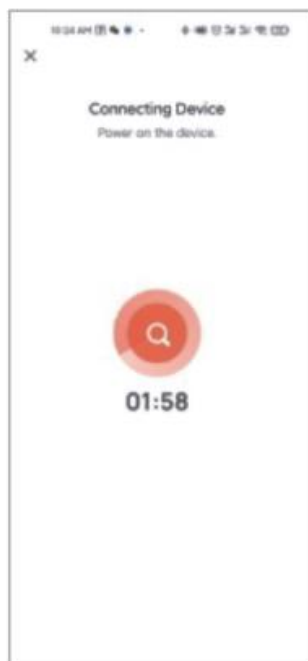
Click “+” on the upper right corner in APP

Manual addition method:

- ① Click “Camera/lock” category on the left
- ② Search “Door Lock (Bluetooth)”
- ③ Start Bluetooth network connection.
- ④ In 3rd page, waiting for device connecting.

Automatic search method:

- ① Select device search page
- ② Search the lock automatically in the page of APP
- ③ Click on the link, and waiting for device connection

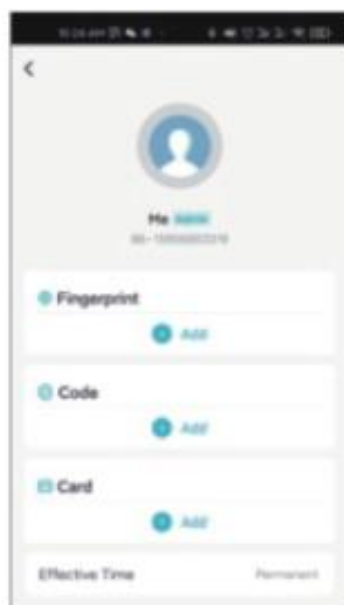


6. Bluetooth: In App page, slide right to unlock, slide left to lock
7. Fingerprint: Click membership administration in APP, scan fingerprint according to tips, then you may use scanned fingerprint to open.
8. Password: Click membership administration in APP, input password, then you may use input password to open.
9. IC card: Click membership administration in APP, scan IC card, then you may use IC card to open.
10. Automatic lock: On App page, slide down to setting with auto-lock on/off. The door will be automatically closed in 6 seconds when auto-lock function is on.
11. Volume: In APP page, slide down to set volume with mute, low, normal and high.
12. Lock Button: Lock button on inner panel. Only master user is allow to open the door when lock button function is on. Push down to turn off lock function.

V . App download



APP interface



App page

App registration : please register new account or use sms password to enter APP. If you do not have an account, Click "new account" to register, following steps, to get sms, and new password setting. Or go ahead to enter APP directly with exist account. Login way includes password, verifying password by sms, social account.

FCC Caution:

This device complies with part 15 of the FCC Rules. Operation is subject to the following two conditions: (1) This device may not cause harmful interference, and (2) this device must accept any interference received, including interference that may cause undesired operation.

Any Changes or modifications not expressly approved by the party responsible for compliance could void the user's authority to operate the equipment.

Note: This equipment has been tested and found to comply with the limits for a Class B digital device, pursuant to part 15 of the FCC Rules. These limits are designed to provide reasonable protection against harmful interference in a residential installation. This equipment generates uses and can radiate radio frequency energy and, if not installed and used in accordance with the instructions, may cause harmful interference to radio communications. However, there is no guarantee that interference will not occur in a particular installation. If this equipment does cause harmful interference to radio or television reception, which can be determined by turning the equipment off and on, the user is encouraged to try to correct the interference by one or more of the following measures:

- Reorient or relocate the receiving antenna.
- Increase the separation between the equipment and receiver.
- Connect the equipment into an outlet on a circuit different from that to which the receiver is connected.
- Consult the dealer or an experienced radio/TV technician for help.

The device has been evaluated to meet general RF exposure requirement.