



用户手册

01 开机动画

- A. 首次开机用按键短按开启;
B. 首次开机用按键短按开启;
C. hello 播放完毕先选择语言和主题风格选择;



(开机动画)



(锁屏设置)



(语言选项)

02 表盘设置

- A. 在表盘的界面下, 长按 3S 进入表盘选;
B. 表盘界面可以显示耳机的电量百分比, 充电情况;
C. 表盘界面可以显示耳机仓的电量百分比, 还有充电情况;



(表盘选择)



5款表盘选择 (此彩带火为动态图)

03 仓连接符号说明

- A. 仓未连接耳机; ❶
B. 耳机已经连接仓未连接手机; ❷
C. 耳机已经连接仓并连接手机; ❸

04 耳机在功能界面上的显示说明

- 注: 耳机连上了仓的图标显示说明

❶ 左耳机不在仓内

❷ 右耳机不在仓内

❸ 左耳机故障

❹ 右耳机故障

❺ 左耳机充电中

❻ 右耳机充电中

❼ 左耳机满电

❽ 右耳机满电

05 音乐控制功能

- 注: 耳机连上了仓并且连上了手机才能显示

- A. 控制上下曲、播放暂停;
B. 音量控制功能 (在音乐界面最下方的喇叭界面按钮进入);
C. 歌词同步显示功能
D. 歌词同步的显示歌词的内容需要与方案商沟通
E. K歌模式: 点击歌词可以进入歌词的滚动K歌模式, 全屏歌词显示。(进入K歌模式, 歌词可以单次显示5分钟时间。



06 ANC 降噪功能

- 注: 环境音处理, 耳机连上了仓才能选择



07 空间音频功能

- 注: 耳机连上了仓才能选择

A. 看剧模式; B. 音乐模式; C. 游戏模式;



(空间音频未开启)



(空间音频开启转态)

08 均衡器功能

- 注: 耳机连上了仓并且连上了手机才能显示



POP (流行) — ROCK (摇滚) — CLASS (经典) — JAZZ (爵士)
— VOICE (人声) — DISCO (舞曲)

09 控制界面风格选择

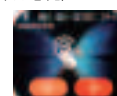
- 总共有默认 (左右滑动)、万花筒、齿轮三种控制模式; 滑动选择后, 点击选择, 项即可切换;



10 查找耳机功能

- 耳机连上了仓才能选择

- A. 可以查找 L 左耳, R 右耳;
B. 进入了 L 或者 R 后, 进入查找响应界面 (图标提醒要在耳机不在耳朵上使用此功能, 避免不适感觉):



11 通话界面功能

- 耳机连上了仓并且连上了手机才能显示

A. 电话提醒功能: 当耳机连上手机, 仓内显示, 此时来电显示如图



12 按键操作显示功能

- A. 单触时候可以在屏熄灭的情况下, 激活仓显示; 单触也可以在屏亮的时候, 熄灭屏;
B. 开盖的时候, 长按 3S 进入耳机左右耳强配功能, 配对成功显示;
C. 长按 10S 进行硬件复位功能; 复位时候屏幕会进行闪动了一次, 重新启动
D. 插充仓界面显示闪电符号 SS, 动态显示。



13 耳机按键功能

开/关机

- 开机: 长按触摸键 1.5 秒
关机: 长按触摸键 3 秒, 主/副耳

切换上/下曲

- 下一曲: 双击右声道切换歌曲
上一曲: 双击左声道切换歌曲

ANC 降噪模式

- 长按左声道切换, 降噪、通透、关闭
三个模式相互切换

来电状态

- 接听/挂断: 单击接听, 通话中单击挂断电话
拒接来电: 长按左/右声道 2 秒拒接电话

中英文切换

- 未连接手机双击功能键即可切换中英文

音量调节

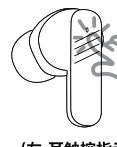
- 音量加: 三击右声道加音量
音量减: 三击左声道减音量

播放/暂停

- 单击左/右耳播放暂停音乐

语音助手

- 长按右声道唤醒 SIRI



(左-耳触控指示)



(右-耳触控指示)

15 参数展示

- 耳机参数

配对名称	LX-50	产品类型	ANC 降噪耳机
芯片版本	V5.4	播放时长	约 4-5H
喇叭尺寸	φ10	频率响应	20Hz-20kHz
耳机电池容量	35mAh	充电时间	0.5-1H
充电方式	顶针接触	待机时间	约 120H

- 智能屏参数

屏幕尺寸	2.01 寸	屏幕分辨率	240*296
电池容量	300mAh	充电方式	TYPE-C

16 耳机注意事项

- 请勿以任何理由拆开、维修或改装耳机, 否则可能会导致起火、电子击穿甚至彻底损坏本产品。
- 请勿将产品置于温度过低或过高 (0°C 以下或 45°C 以上) 的环境下。
- 请勿在雷雨天气使用本设备, 雷雨天气可能会导致设备故障或电击危险。
- 请勿使用腐蚀性化学制品、清洗剂或强洗涤剂清洗设备或其配件。
- 请勿将设备靠近热源或裸露的火源, 如电暖器、微波炉、烤箱、热水器、炉火蜡烛或其他可能产生高温的地方。
- 请勿长时间大音量听音乐会造成听力损害, 使用该设备时请调整到适当音量。
- 请勿自行更换电池, 本设备配有不可拆卸的内置电池, 以免损坏电池或设备。不建议私自更换。
- 清洁和维护前, 请停止使用本设备, 关闭所有应用, 并断开与其他设备的所有连接或线缆。

17 屏幕注意事项

- 操作按钮或触摸屏: 请按照说明书中的指示准确操作按钮或触摸屏, 避免错误操作。
- 显示内容: 显示屏可以显示各种信息, 包括来电通知、音乐播放状态、电池电量等。请确保了解屏幕上显示的各种信息的含义和操作方法。
- 屏幕保护与维护: 为了保护屏幕免受划伤和损坏, 建议避免在尘土或湿润环境中使用耳机。请使用柔软的布清洁屏幕, 并避免使用含有化学成分清洁剂。
- 电源状态指示: 显示屏通常会显示电池电量、连接状态等信息。请注意屏幕上显示的相关指示符或图标, 以便了解耳机的当前状态。
- 避免在强光下长时间使用屏幕, 以免影响屏幕的显示效果。在操作时请轻按屏幕, 避免用力过度造成损坏。
- 收纳注意事项: 在将耳机存放或携带时, 请注意避免将重物或压力施加在显示屏区域, 以免导致屏幕损坏或压碎。并确保屏幕不会受到外部压力或碰撞影响。

18 禁止

- 禁止拆解、撞击、挤压电池或投入火中、插入异物, 以免引起电池漏液、过热、起火或爆炸。
- 本设备并非玩具, 儿童应在成人监护下使用本设备配件要求。
- 若出现严重鼓胀禁止继续使用。
- 禁止置于高温环境中, 远离火源。
- 电池浸水或其它液体中后禁止使用。



User manual

01 Boot animation

- A. Press the button briefly to turn on the device for the first time;
B. Press the button briefly to turn on the device for the first time;
C. After playing 'hello', choose the language and theme style first;



(Startup animation)



(Lock screen setting)



(Language options)

02 Dial settings

- A. On the dial interface, long press for 3 seconds to enter the dial selection;
B. The dial interface can display the battery percentage and charging status of the earphones;
C. The dial interface can display the percentage of battery and charging status of the headphone compartment;



(Dial selection)



5 dial options (this ribbon is a dynamic image)

03 Explanation of Warehouse Connection Symbols

- A. The warehouse is not connected to headphones; ❶
B. The earphones have been connected to the compartment but not to the phone; ❷
C. The earphones have been connected to the compartment and connected to the phone; ❸

04 Headphones display in the compartment

- Note: Icon display instructions for headphones connected to the compartment

❶ The left earphone is not in the compartment

❷ The right earphone is not in the compartment

❸ Left earphone malfunction

❹ Right earphone malfunction

❺ Left earphone charging in progress

❻ Right earphone charging in progress

❼ Left earphone fully charged

❽ Right earphone fully charged

05 Music control function

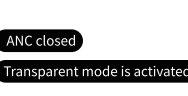
- Note: Only when the earphones are connected to the compartment and the phone can they be displayed

- A. Control up and down songs, pause playback;
B. Volume control function (accessed through the speaker interface button at the bottom of the music interface);
C. Lyrics synchronization display function
D. The synchronized display of lyrics requires communication with the proposal provider regarding the content of the lyrics
E. K-song mode: Clicking on the lyrics will enter the scrolling K-song mode with full screen lyrics display. (Enter karaoke mode, The lyrics can be displayed for 5 minutes at a time.



06 ANC noise reduction function

- Note: Environmental sound processing can only be selected when the headphones are connected to the compartment



07 Spatial audio function

- Note: Only when the earphones are connected to the compartment can they be selected

A. Drama viewing mode; B. Music mode; C. Game mode;



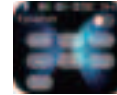
(Space audio not turned on)



(Space audio turned on)

08 adaptive equalizer

- Note: Only when the earphones are connected to the compartment and the phone can they be displayed



POP — ROCK — CLASS — JAZZ — VOICE — DISCO

09 Control interface style selection

- There are three control modes in total: default (sliding left and right), kaleidoscope, and gear; After sliding the selection, Click on the selection button to switch between items;



10 Find headphone function

- Only when the earphones are connected to the compartment can they be selected

- A. Can search for L left ear and R right ear;
B. After entering L or R, enter the search response interface (icon reminder to use this when the headphones are not on the ears)Function to avoid discomfort:



11 Call interface function

- The headphones need to be connected to the compartment and the phone to display

- A. Phone reminder function: When the earphones are connected to the phone, the display in the compartment will show the incoming call as shown in the picture



12 Key operation display function

- A. When making a single touch, the compartment display can be activated with the screen turned off; One touch can also turn off the screen when it is on;
B. When opening the cover, long press for 3 seconds to enter the headphone left and right ear strong pairing function, and the pairing success display will be displayed;
C. Long press for 10 seconds to perform hardware reset function; The screen will flash once during reset, restart;
D. The interface of the charging compartment displays the lightning symbol SS, which is dynamically displayed。



13 Headphone button function

On/Off

- Power on: Long press the touch button for 1.5 seconds
Shutdown: Press and hold the touch button for 3 seconds, and the main/secondary ears will be turned off

modulation

- Volume up: Three clicks on the right channel to increase volume
Volume reduction: Three clicks on the left channel to reduce volume

Switch up/down tracks

- Next track: Double click on the right channel to switch songs
Previous track: Double click on the left channel to switch songs

Play/Pause

- Click on the left/right ear to play pause music

ANC noise reduction mode

- Long press the left channel switch to reduce noise, transparency, And turn off switching between three modes

Call voice assistant

- Long press the right channel to wake up SIRI

Incoming call status

- Answer/Hang up: Click on answer, during call, click on hang up
Reject call: Long press the left/right channel for 2 seconds to reject the call

Switching between Chinese and English

- Double click the function key on an unconnected phone to switch between Chinese and English

14 LED flashing

- Blue light flashing:

1. Power on

- White light flashing:

1. Shutdown 2, low power

- Blue and white flashing alternately

1. Pairing transformation

- light off

1. Connection successful 2. Music playback 3. Music pause 4. Incoming call 5. In call

15 Parameter display

- Headphone parameters

Pairing Name	LX-50	Product type	Full color touchscreen headphones
Chip version	V5.4	Play duration	About 4-5H
Drive Unit	φ10	frequency response	20Hz-20kHz
Earphone battery capacity	35mAh	Charging time	0.5-1H
Charging method	Top pin contact	Standby time	About 120H

- Intelligent screen parameters

Screen size	2.01 寸	Screen resolution	240*296
Battery capacity	300mAh	Charging method	TYPE-C

16 Earphone precautions

- Do not disassemble, repair, or modify headphones for any reason, as this may cause fire, electronic breakdown, or even completely damage this product.
- Do not place the product in an environment where the temperature is too low or too high (below 0 °C or above 45C).
- Do not use this device in thunderstorm weather as it may cause equipment malfunction or electric shock hazards.
- Do not use strong chemicals, cleaning agents, or strong detergents to clean equipment or its accessories.

18 Prohibit

- It is prohibited to disassemble, impact, squeeze the battery, put it into fire, or insert foreign objects to avoid battery leakage, overheating, etc
- Fire or explosion.
- This device is not a toy, and children should use its accessories under adult supervision.
- Do not continue to use if severe swelling occurs.
- Do not place in high temperature environments and keep away from sources of fire.
- Do not use batteries immersed in water or other liquids.

FCC Statement

This device complies with part 15 of the FCC rules. Operation is subject to the following two conditions: (1) this device may not cause harmful interference, and (2) this device must accept any interference received, including interference that may cause undesired operation.

Changes or modifications not expressly approved by the party responsible for compliance could void the user's authority to operate the equipment.

NOTE: This equipment has been tested and found to comply with the limits for a Class B digital device, pursuant to part 15 of the FCC Rules. These limits are designed to provide reasonable protection against harmful interference in a residential installation. This equipment generates uses and can radiate radio frequency energy and, if not installed and used in accordance with the instructions, may cause harmful interference to radio communications. However, there is no guarantee that interference will not occur in a particular installation. If this equipment does cause harmful interference to radio or television reception, which can be determined by turning the equipment off and on, the user is encouraged to try to correct the interference by one or more of the following measures:

- Reorient or relocate the receiving antenna.
- Increase the separation between the equipment and receiver.
- Connect the equipment into an outlet on a circuit different from that to which the receiver is connected.
- Consult the dealer or an experienced radio/TV technician for help.

The device has been evaluated to meet general RF exposure requirement. The device can be used in portable exposure condition without restriction.