

Wireless Speaker

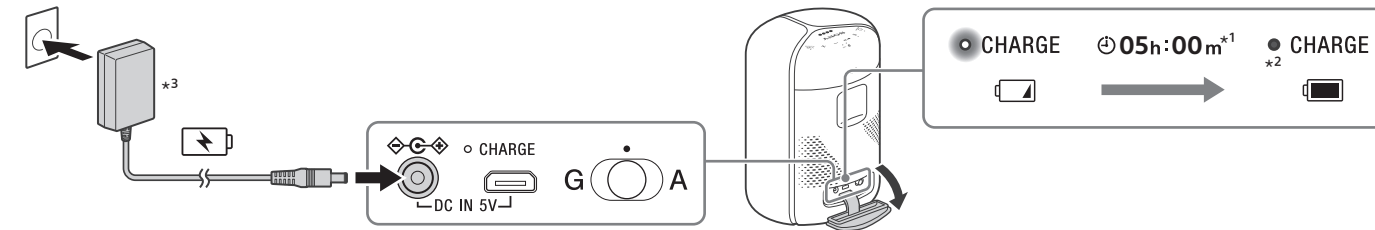
Operating Instructions



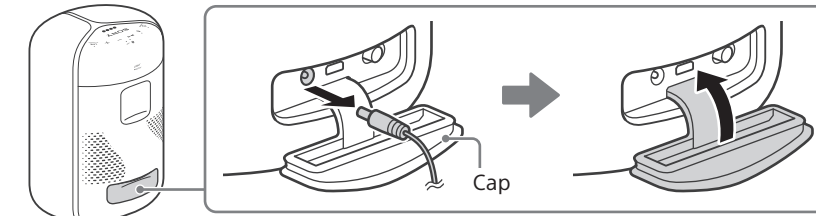
SRS-XB402M

Charging the unit

1 Charge the built-in battery for the first time.



2 Close the cap firmly.
The cap plays a very important role in maintenance of the water resistant performance.



*1 Time that is required to charge the empty built-in battery to its full capacity when the unit turns off.

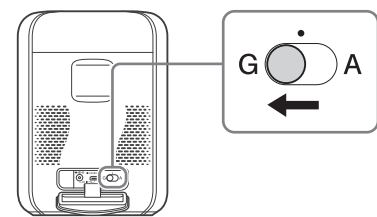
*2 If the built-in battery is fully charged when you connect the unit to an AC outlet, the CHARGE indicator lights up in orange then turns off after about 1 minute.

*3 If a AC power cord is supplied, the shape of the plug on the AC adaptor and the connection method differ. According your country or region, connect the AC power cord to the AC adaptor.

Listening to Music by talking to the Google Assistant device

You can listen to music on the unit by talking to the Google Assistant device by linking the unit and Google Assistant device with the Google Home app. For details, check the Google Home app.

1 Slide the Amazon/Google selection switch to the "G" (Google Assistant) side.



2 Install the Google Home app.
Install the Google Home app on a smartphone/iPhone.



<https://www.google.com/cast/setup/>
Google Home

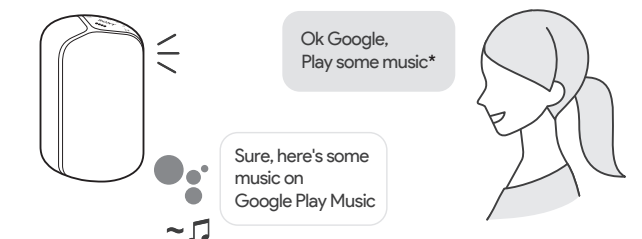
3 Place the unit as close to a wireless LAN router as possible.
① Establish a wireless connection from the smartphone/iPhone to the wireless LAN router.
② Take a note of the SSID and the password (encryption key) of the connected wireless LAN router.
Some of the wireless LAN routers have multiple SSIDs.
Be sure to take a note of the SSID that you used for establishing the wireless connection from the smartphone/iPhone.
For details, refer to the operating instructions supplied with the wireless LAN router.
③ On the iPhone*, activate the BLUETOOTH* function.
* The Google Home app uses the BLUETOOTH function to identify the unit.

4 Set up Wi-Fi with app.
Follow the directions in the app to set up your unit for Wi-Fi.
Set the unit to the smartphone/iPhone's same Wi-Fi connection.
• Depending on your service, you may have to create an account in advance.



Note
The (BLUETOOTH)/ PAIRING button is disabled before the Wi-Fi setup is complete.

5 Talk to your Google Assistant.
You can start conversation simply by saying "Ok Google" or by pressing and holding the (play) button.



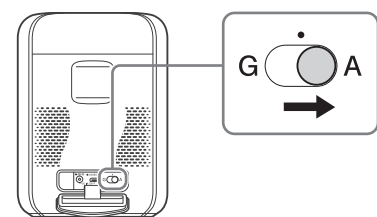
* Visit the following website for the latest voice commands;
assistant.google.com

Volume Operations
Say a voice command to set the volume to your desired level.

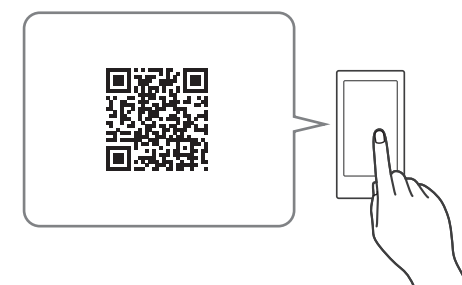
Listening to Music by talking to the Amazon Alexa Device

Alexa is Amazon's cloud-based voice service that brings intelligent voice control to your Sony device. Use the Amazon Alexa device to ask Alexa to play music, pause, resume and more. To use this function, you will need to connect your Amazon account to the Amazon Alexa device.

1 Slide the Amazon/Google selection switch to the "A" (Amazon Alexa) side.



2 Install the Sony | Music Center app.
Install the Sony | Music Center app on a smartphone/iPhone.



<http://www.sony.net/smcapp/>
Sony Music Center

3 Place the unit as close to a wireless LAN router as possible.
① Establish a wireless connection from the smartphone/iPhone to the wireless LAN router.
② Take a note of the SSID and the password (encryption key) of the connected wireless LAN router.
Some of the wireless LAN routers have multiple SSIDs.
Be sure to take a note of the SSID that you used for establishing the wireless connection from the smartphone/iPhone.
For details, refer to the operating instructions supplied with the wireless LAN router.

4 Set up Wi-Fi with app.
Follow the directions in the app to set up your unit for Wi-Fi.
Set the unit to the smartphone/iPhone's same Wi-Fi connection.
• Depending on your service, you may have to create an account in advance.



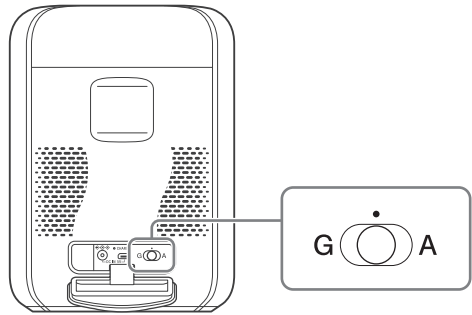
Hint
Use Sony | Music Center to deregister the unit from the Amazon account. Even if you deregister an account on the Alexa app, the unit will not recognize that the account has been deregistered.

5 Talk to your Amazon Alexa.
You can ask Alexa to play music from supported streaming services or adjust unit volume using your voice. For details of the contents that can be operated and how to talk, refer to Sony | Music Center.

Note
Amazon Alexa is not available in all languages and countries/regions.

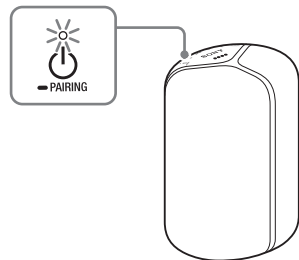
You can also use as a BLUETOOTH speaker

1 Check the position of the Amazon/Google selection switch on the back.

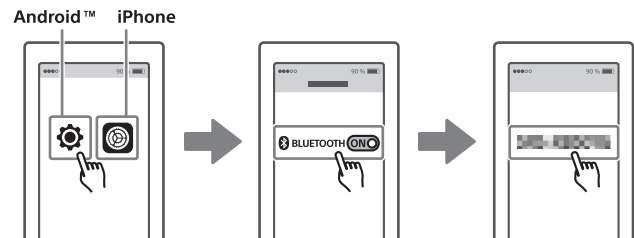


G	Google Assistant Check if the Wi-Fi connection is established first.
A	Amazon Alexa There is no need to check for the Wi-Fi connection.

2 Press and hold the (power) button for about 3 seconds. When the unit is placed in pairing mode, the unit beeps.

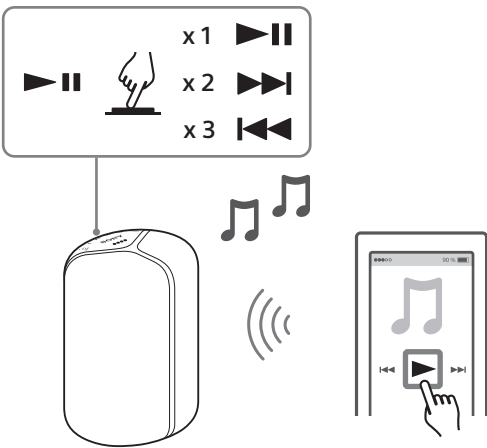


3 Establish a BLUETOOTH pairing.
If the model name is not found, select the name of the unit you set up for Wi-Fi.

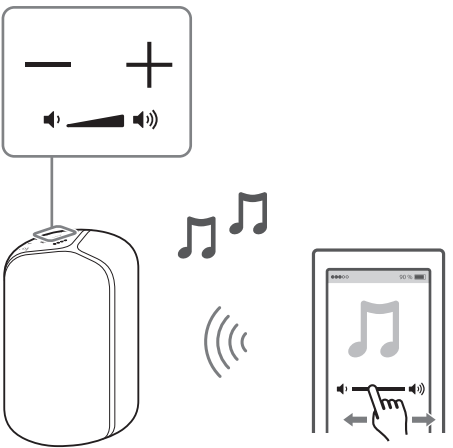


When a BLUETOOTH connection is established, the unit beeps.

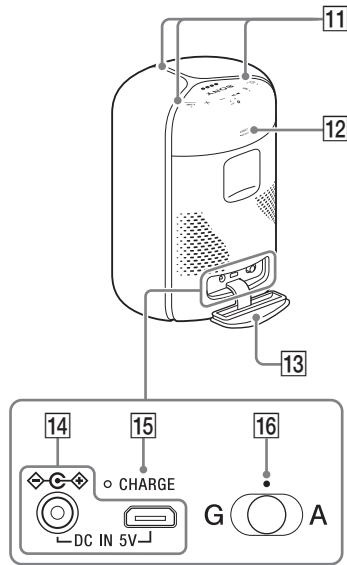
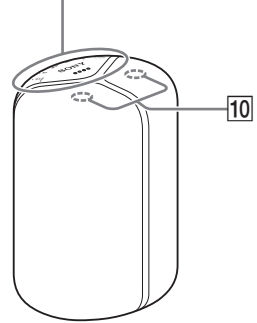
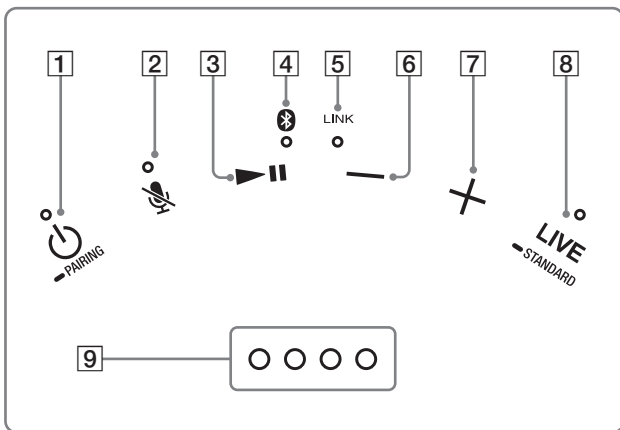
4 Start playback.



Adjust the volume.



Parts and Controls

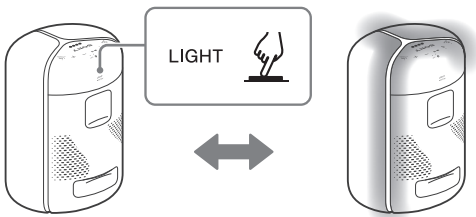


- 1 (power) button with indicator/ PAIRING button
- 2 (microphone off) button with indicator
- 3 (play) button
- 4 (BLUETOOTH) indicator
- 5 LINK indicator
- 6 (volume) button
- 7 (volume) button
- 8 LIVE button with indicator/ STANDARD button
- 9 Status LEDs (for Google Assistant)
- 10 Built-in microphones

- 11 Lighting
- 12 LIGHT button/ BATTERY button
- 13 Cap
- 14 DC IN 5V jack
- 15 CHARGE indicator
- 16 Amazon/Google selection switch

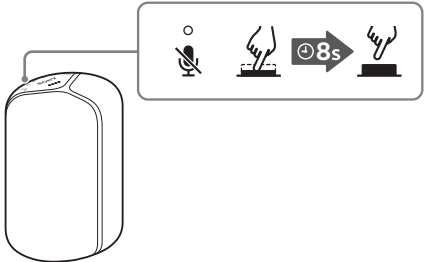
Lighting

Adjusting the brightness/turning off the lighting
The lighting brightness shifts every time you press the LIGHT button/ BATTERY button.
You can also turn off the lighting by pressing the button repeatedly.



FAQ

Do you want to restart* the unit?
Press and hold the (microphone off) button for about 8 seconds.
* The information including the Google Assistant settings will be retained.



"Sony | Music Center" app

Download App for Android/iPhone



<http://www.sony.net/smcapp/>

Operations that can be performed on the unit with "Sony | Music Center" app.

- Sound quality setting and equalizer adjustment
- Lighting setting (switching the lighting mode)

Help Guide

web document for a PC/smartphone



http://rd1.sony.net/help/speaker/srs-xb501g/h_zz/

