

APPENDIX

11. Photographs of Test Setup



Fig.1 Photograph of the SAR measurement system

Photograph of the Tissue Simulant Fluid Liquid (Head & Body)

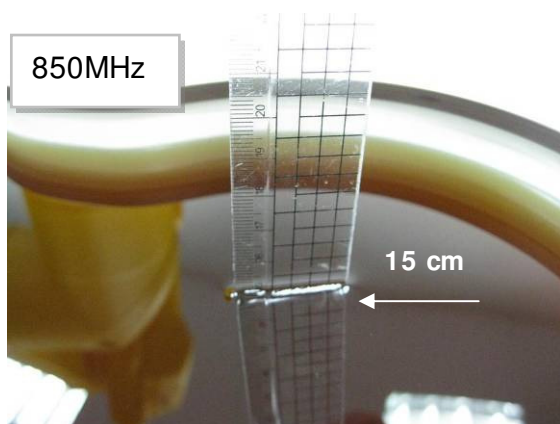


Fig.2.1

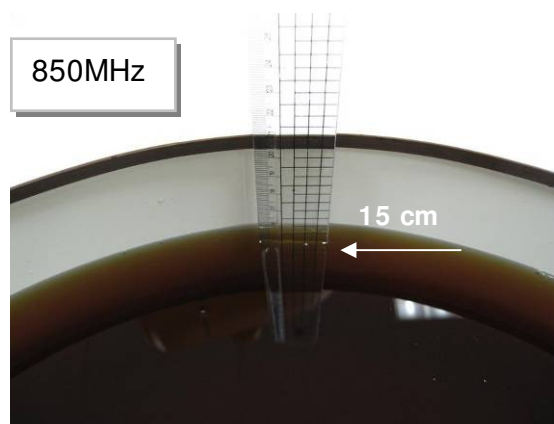


Fig.2.2

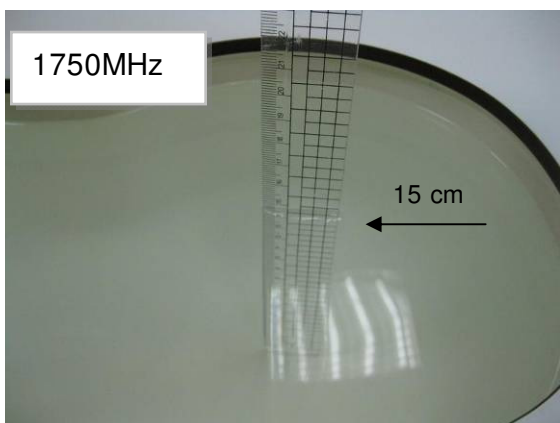


Fig.2.3

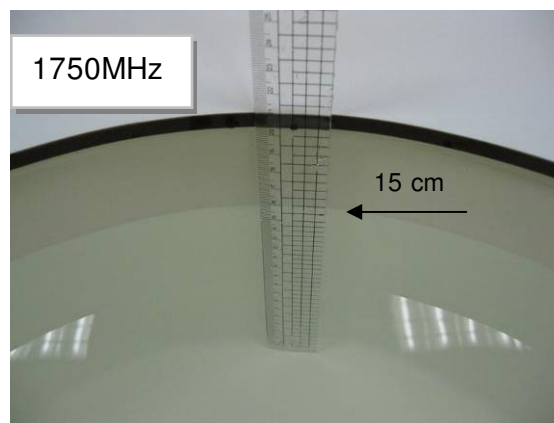


Fig.2.4

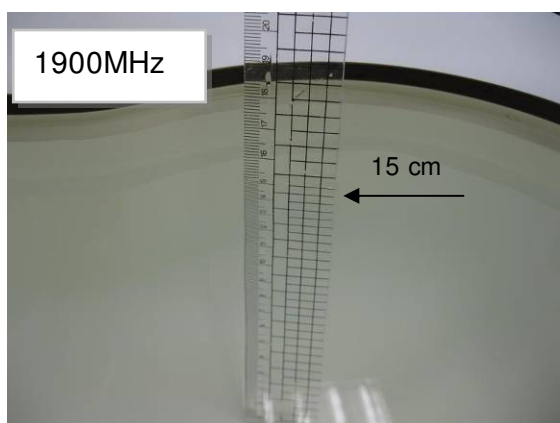


Fig.2.5

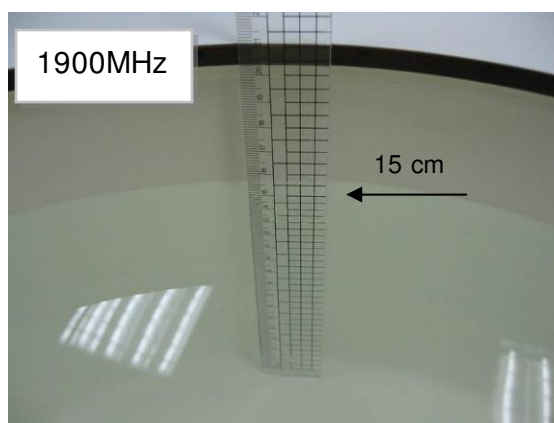


Fig.2.6

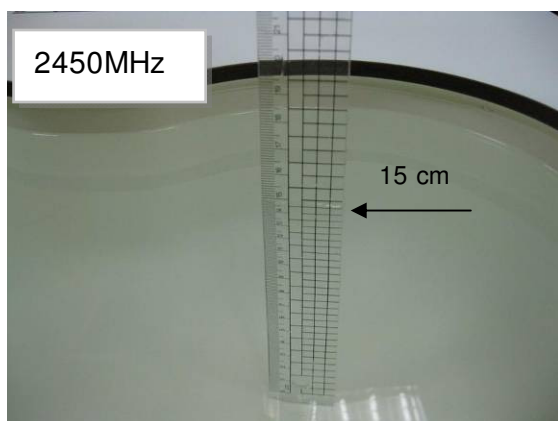


Fig.2.7

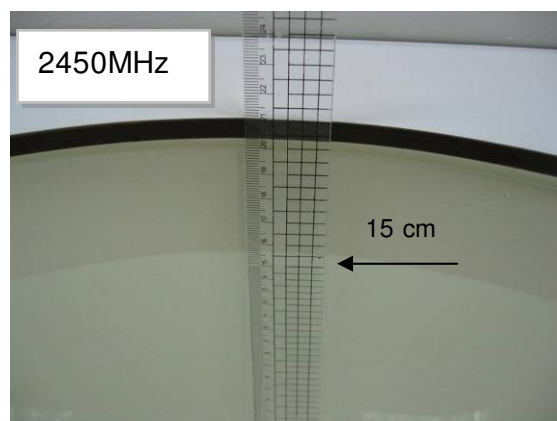


Fig.2.8

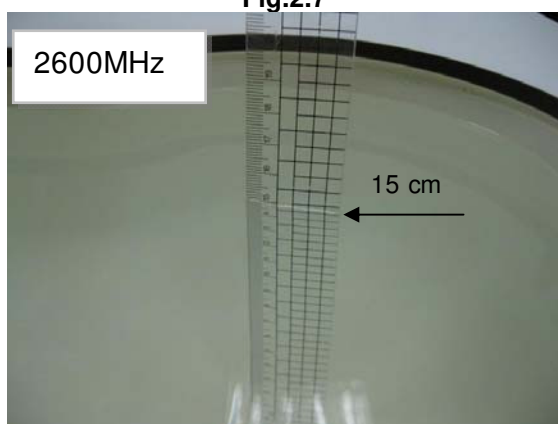


Fig.2.9

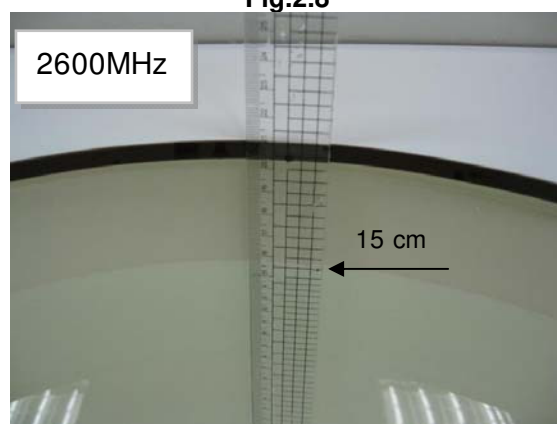


Fig.2.10

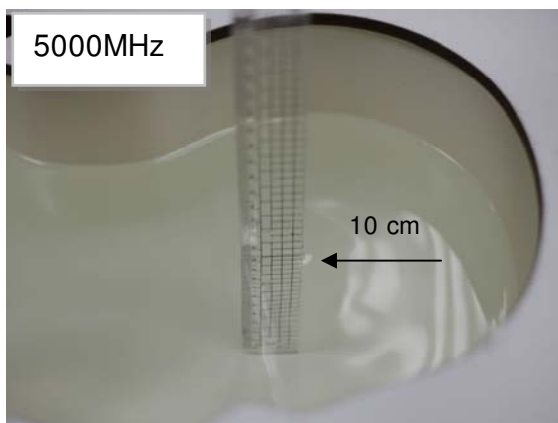


Fig.2.11

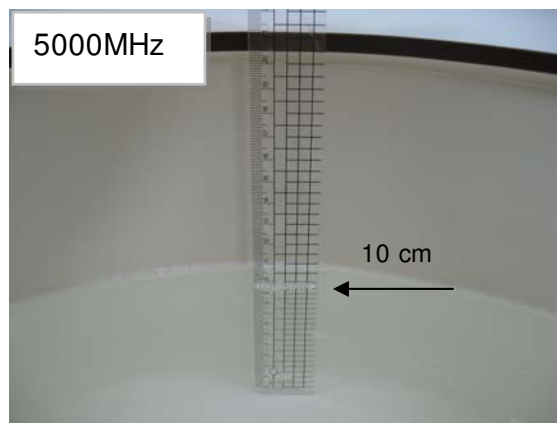


Fig.2.12

Head Mode



Fig.3 Right Head Section / Cheek-Touch Position

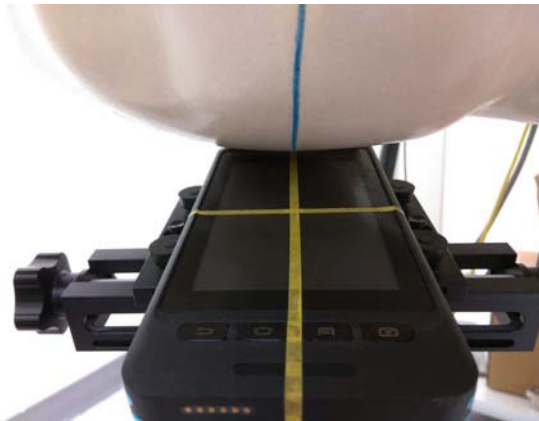
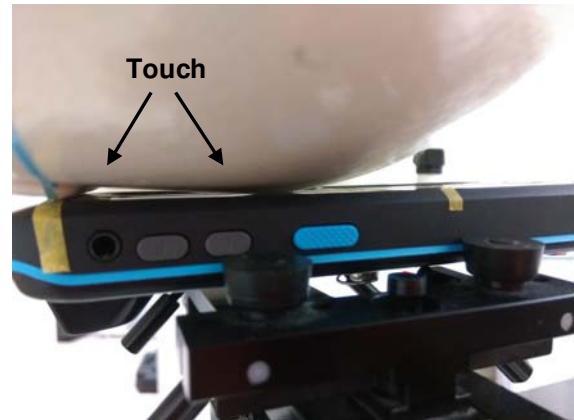


Fig.4 Right Head Section / Ear-Tilt Position(15°)

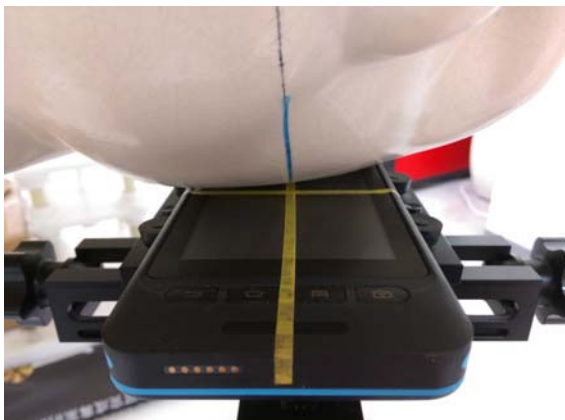
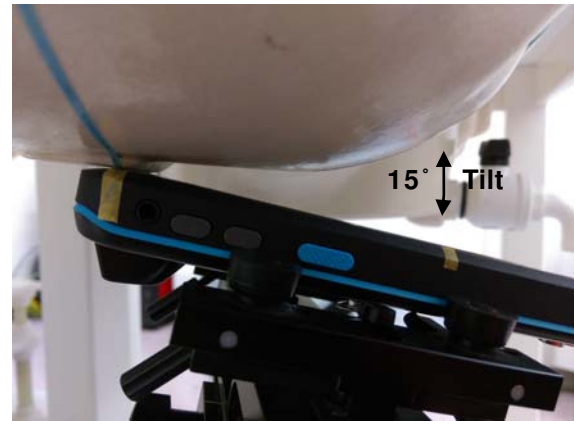
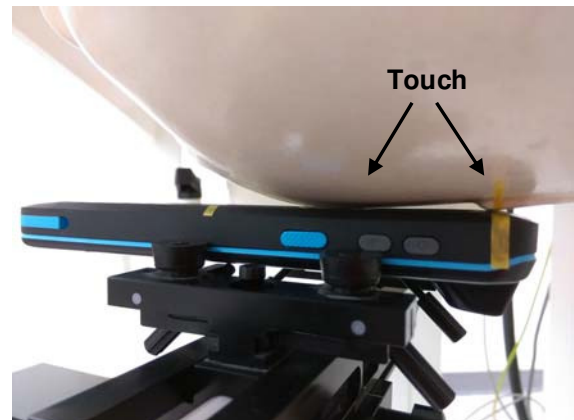


Fig.5 Left Head Section / Cheek-Touch Position



Head Mode



Fig.6 Left Head Section / Ear-Tilt Position(15°)

Body worn- distance between flat phantom and mobile phone is 10 mm

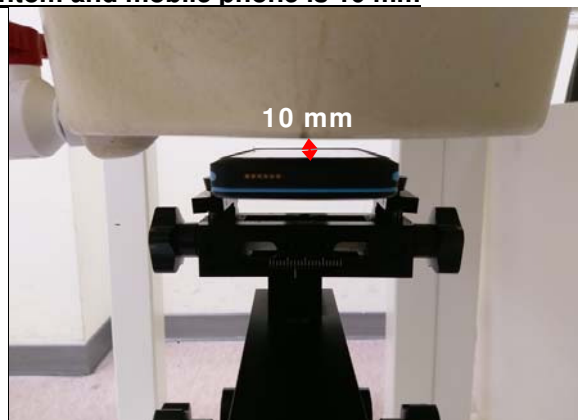


Fig.7 EUT Front side to flat phantom

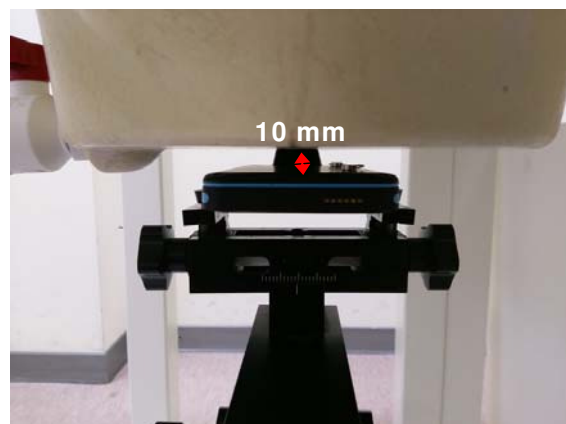


Fig.8 EUT Back side to flat phantom

Hotspot mode- distance between flat phantom and mobile phone is 10 mm



Fig.9 EUT Top side to flat phantom

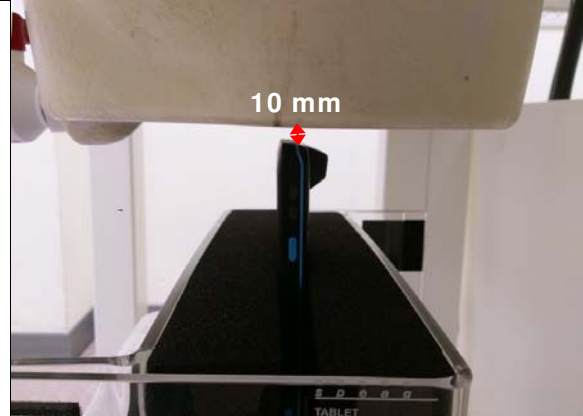


Fig.10 EUT Left side to flat phantom

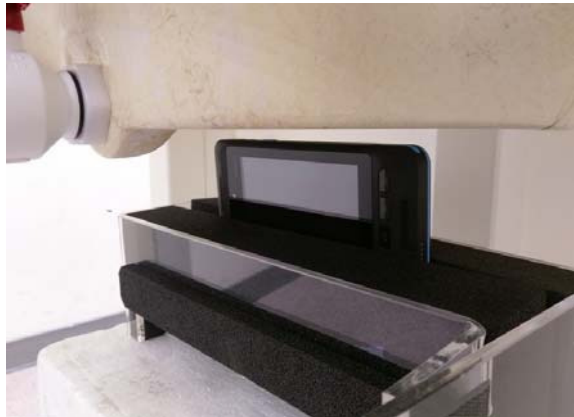
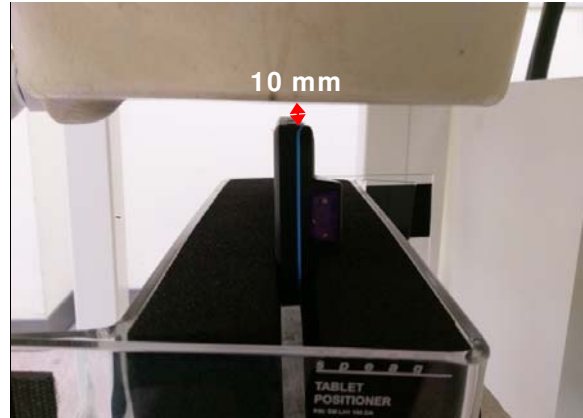
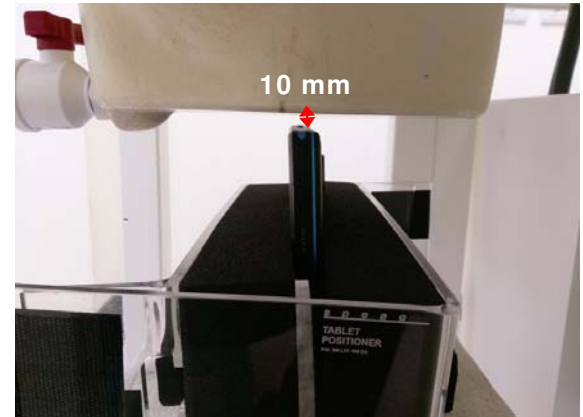


Fig.11 EUT Right side to flat phantom



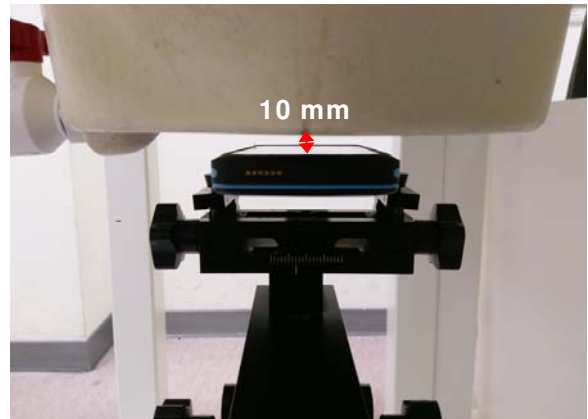


Fig.12 EUT Front side to flat phantom

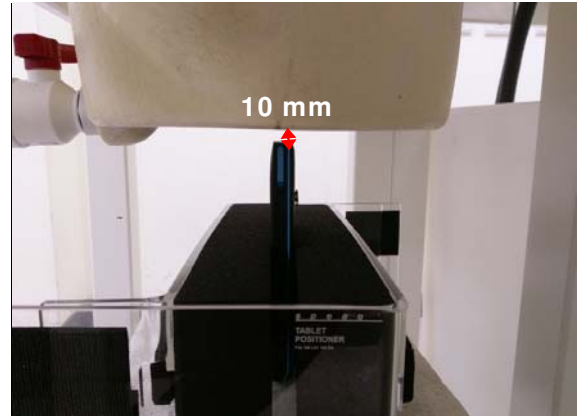


Fig.13 EUT Bottom side to flat phantom

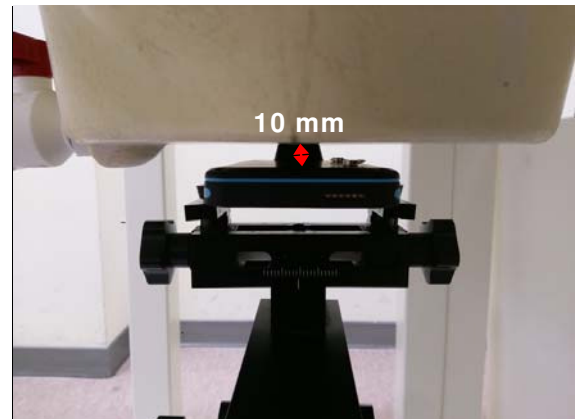


Fig.14 EUT Back side to flat phantom

Product specific 10-g SAR - distance between flat phantom and mobile phone is 0 mm



Fig.15 EUT Back side_WWAN to flat phantom

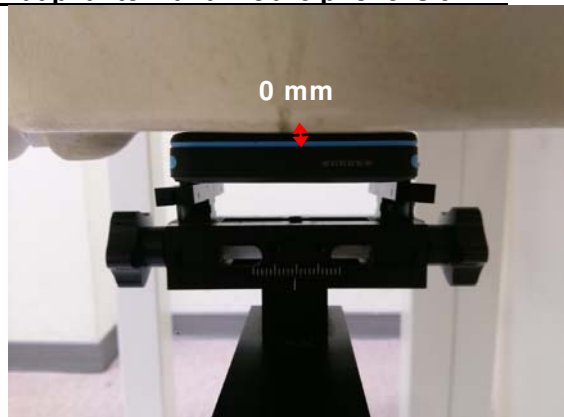


Fig.16 EUT Back side_WLAN to flat phantom

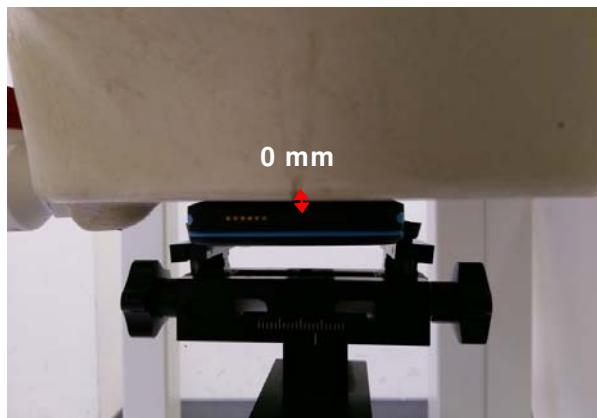
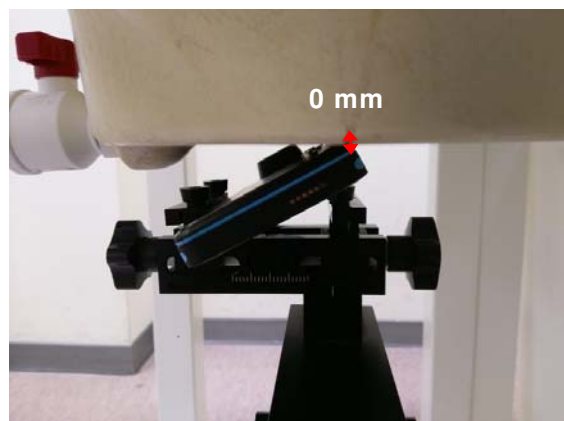


Fig.17 EUT Front side to flat phantom



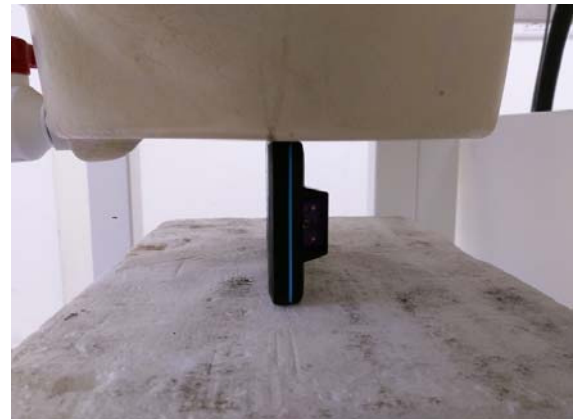


Fig.18 EUT Left side to flat phantom

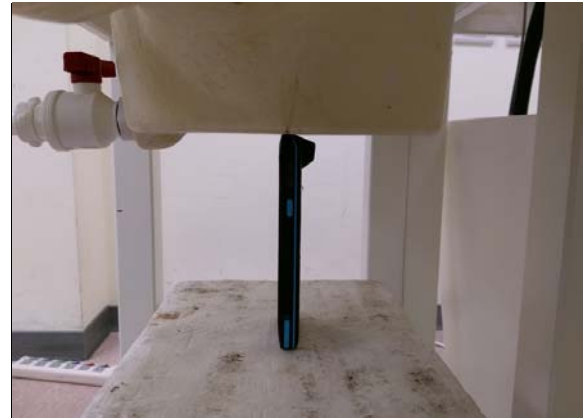
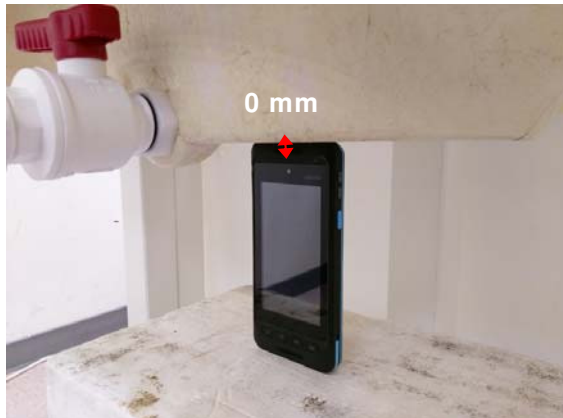


Fig.19 EUT Top side to flat phantom

11. Photographs of the EUT



Fig.20 Front view of EUT



Fig.21 Back view of EUT

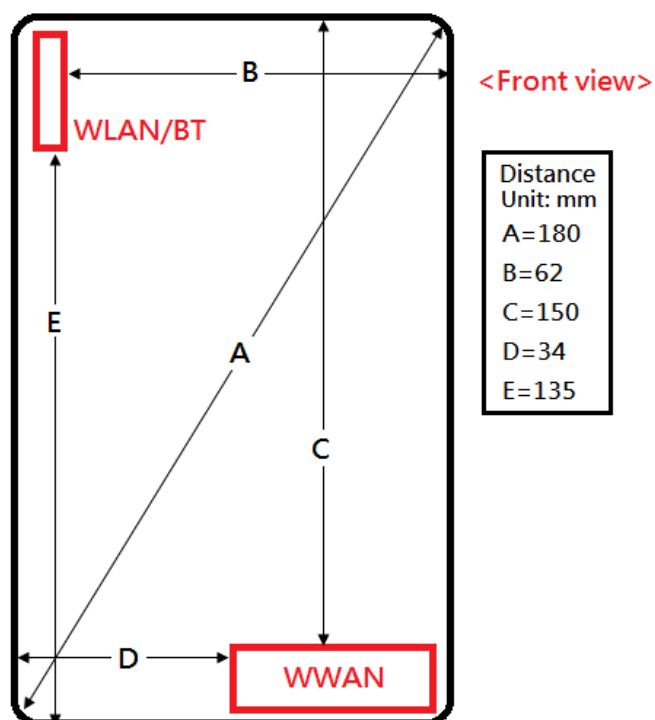


Fig.22 Antenna position of EUT

- End of Report -