



FCC SAR Test Report

FCC ID: 2BH7FTX30UPLUS

Project No. : 2408G116
Equipment : AX1800 Dual Antennas High Gain Wireless USB Adapter
Brand Name : tp-link
Test Model : Archer TX30U Plus
Series Model : N/A
Date of Receipt : Oct. 28, 2024
Date of Test : Oct. 28, 2024 ~ Nov. 06, 2024
Issued Date : Jan. 24, 2025
Report Version : R00
Test Sample : Engineering Sample No.: DG20241028212
Standard(s) : Please refer to page 2.
Applicant : TP-Link Systems Inc.
Address : 10 Mauchly, Irvine, CA 92618
Manufacturer : TP-Link Systems Inc.
Address : 10 Mauchly, Irvine, CA 92618

The above equipment has been tested and found compliance with the requirement of the relative standards by BTL Inc.

Prepared by :

Dana Chen

Dana Chen

Approved by :

Herbert Liu

Herbert Liu

Room 108-116, 309-310, Building 2, No.1, Yile Road, Songshan Lake Zone, Dongguan City, Guangdong, People's Republic of China.

Tel: +86-769-8318-3000

Web: www.newbtl.com

Service mail: btl_qa@newbtl.com

Standard(s) : **IEEE Std C95.1:2019** IEEE Standard for Safety Levels with Respect to Human Exposure to Electric, Magnetic, and Electromagnetic Fields, 0 kHz to 300 GHz

IEEE Std 1528-2013 Recommended Practice for Determining the Peak Spatial-Average Specific Absorption Rate (SAR) in the Human Head from Wireless Communications Devices: Measurement Techniques

KDB447498 D04 Interim General RF Exposure Guidance v01

KDB447498 D02 SAR Procedures for Dongle Xmtr v02

KDB865664 D01 SAR measurement 100 MHz to 6 GHz v01r04

KDB865664 D02 SAR Reporting v01r02

The following reference test guidance is not within the scope of accreditation of A2LA:

KDB248227 D01 802.11 Wi-Fi SAR v02r02

Declaration

BTL represents to the client that testing is done in accordance with standard procedures as applicable and that test instruments used has been calibrated with standards traceable to international standard(s) and/or national standard(s).

BTL's reports apply only to the specific samples tested under conditions. It is manufacture's responsibility to ensure that additional production units of this model are manufactured with the identical electrical and mechanical components. BTL assumes no responsibility for the data provided by the customer, any statements, inferences or generalizations drawn by the customer or others from the reports issued by BTL.

The report must not be used by the client to claim product certification, approval, or endorsement by A2LA or any agency of the U.S. Government.

This report is the confidential property of the client. As a mutual protection to the clients, the public and ourselves, the test report shall not be reproduced, except in full, without our written approval.

BTL's laboratory quality assurance procedures are in compliance with the ISO/IEC 17025: 2017 requirements, and accredited by the conformity assessment authorities listed in this test report.

BTL is not responsible for the sampling stage, so the results only apply to the sample as received.

The information, data and test plan are provided by manufacturer which may affect the validity of results, so it is manufacturer's responsibility to ensure that the apparatus meets the essential requirements of applied standards and in all the possible configurations as representative of its intended use.

Limitation

For the use of the authority's logo is limited unless the Test Standard(s)/Scope(s)/Item(s) mentioned in this test report is (are) included in the conformity assessment authorities acceptance respective.

Please note that the measurement uncertainty is provided for informational purpose only and are not use in determining the Pass/Fail results.

Table of Contents	Page
REPORT ISSUED HISTORY	6
1 . GENERAL INFORMATION	7
1.1 STATEMENT OF COMPLIANCE	7
1.2 LABORATORY ENVIRONMENT	7
1.3 GENERAL DESCRIPTION OF EUT	8
1.4 MAIN TEST INSTRUMENTS	9
2 . RF EMISSIONS MEASUREMENT	10
2.1 TEST FACILITY	10
2.2 MEASUREMENT UNCERTAINTY	10
3 . SAR MEASUREMENTS SYSTEM CONFIGURATION	12
3.1 SAR MEASUREMENT SET-UP	12
3.1.1 TEST SETUP LAYOUT	12
3.2 DASY5 E-FIELD PROBE SYSTEM	13
3.2.1 PROBE SPECIFICATION	13
3.2.2 E-FIELD PROBE CALIBRATION	14
3.2.3 OTHER TEST EQUIPMENT	15
3.2.4 SCANNING PROCEDURE	16
3.2.5 SPATIAL PEAK SAR EVALUATION	17
3.2.6 DATA STORAGE AND EVALUATION	18
3.2.7 DATA EVALUATION BY SEMCAD	19
4 . SYSTEM VERIFICATION PROCEDURE	21
4.1 TISSUE VERIFICATION	21
4.2 SYSTEM CHECK	22
4.3 SYSTEM CHECK PROCEDURE	22
5 . SAR MEASUREMENT VARIABILITY AND UNCERTAINTY	23
5.1 SAR MEASUREMENT VARIABILITY	23
6 . OPERATIONAL CONDITIONS DURING TEST	24
6.1 TEST POSITION	24
6.2 TEST CONFIGURATION	25
6.2.1 WIFI TEST CONFIGURATION	25
7 . TEST RESULT	28
7.1 CONDUCTED POWER RESULTS	28
7.1.1 CONDUCTED POWER MEASUREMENTS OF WIFI	28
7.2 SAR TEST RESULTS	40
7.2.1 SAR MEASUREMENT RESULT	41



Table of Contents

Page

8 MULTIPLE TRANSMITTER EVALUATION	46
APPENDIX	47
1. TEST LAYOUT	47
Appendix A. SAR Plots of System Verification	
Appendix B. SAR Plots of SAR Measurement	
Appendix C. Calibration Certificate	
Appendix D. Photographs of the Test Set-Up	

REPORT ISSUED HISTORY

Report No.	Version	Description	Issued Date	Note
BTL-FCC SAR-1-2408G116	R00	Original Report.	Jan. 24, 2025	Valid

1. GENERAL INFORMATION

1.1 STATEMENT OF COMPLIANCE

Mode	Highest Reported Body SAR-1g(W/kg)
WiFi 2.4G	1.490
WiFi 5.2G	1.498
WiFi 5.3G	1.402
WiFi 5.6G	1.417
WiFi 5.8G	1.475

Note:

1) The device is in compliance with Specific Absorption Rate (SAR) for general population uncontrolled exposure limits according to the FCC rule §2.1093, the ANSI C95.1:1992/IEEE C95.1:1991, the NCRP Report Number 86 for uncontrolled environment, and had been tested in accordance with the measurement methods and procedures specified in IEEE 1528.

1.2 LABORATORY ENVIRONMENT

Temperature	Min. = 20°C, Max. = 24°C
Relative humidity	Min. = 30%, Max. = 70%
Ground system resistance	< 0.5Ω
Ambient noise is checked and found very low and in compliance with requirement of standards. Reflection of surrounding objects is minimized and in compliance with requirement of standards.	

1.3 GENERAL DESCRIPTION OF EUT

Equipment	AX1800 Dual Antennas High Gain Wireless USB Adapter					
Brand Name	tp-link					
Test Model	Archer TX30U Plus					
Series Model	N/A					
Model Difference(s)	N/A					
Hardware Version	V1					
Firmware Version	V1					
Modulation	WiFi(DSSS/OFDM/OFDMA)					
Operation Frequency Range(s)	Band	TX (MHz)				
	WiFi 2.4G	2400~2483.5				
	WiFi 5G	5150~5250				
		5250~5350				
		5470~5725				
		5725~5850				
Test Channels (low-mid-high)	1-2-6-10-11 (WiFi 2.4G 802.11b/g/n HT20/ax HE20)					
	3-4-6-8-9 (WiFi 2.4G 802.11n HT40/ax HE40)					
	Band	WiFi 5.2G	WiFi 5.3G	WiFi 5.6G	WiFi 5.8G	
	802.11a/n HT20 /ac VHT20 /ax HE20	36-40-48	52-60-64	100-116-140	149-157-165	
	802.11n HT40 /ac VHT40 /ax HE40	38-46	54-62	102-110-134	151-159	
	802.11ac VHT80 /ax HE80	42	58	106-122	155	
Antenna Information	Ant.	Manufacturer	P/N	Type	Frequency Range (MHz)	Gain (dBi)
	1	TP-LINK CORPORATION PTE. LTD.	3101507187	Dipole	2400~2500	1.98
					5150~5250	2.00
					5250~5350	1.80
					5470~5725	1.20
					5725~5895	1.07
	2	TP-LINK CORPORATION PTE. LTD.	3101507187	Dipole	2400~2500	2.00
					5150~5250	2.00
					5250~5350	1.56
					5470~5725	1.79
					5725~5895	1.50

Note: The antenna gain is provided by the manufacturer.

1.4 MAIN TEST INSTRUMENTS

Item	Equipment	Manufacturer	Model	Serial No.	Cal. Date	Cal. Interval
1	Data Acquisition Electronics	Speag	DAE4	1390	Nov. 20, 2023	1 Year
2	E-field Probe	Speag	EX3DV4	7544	Apr. 03, 2024	1 Year
3	System Validation Dipole	Speag	D2450V2	919	Apr. 22, 2024	3 Years
4	System Validation Dipole	Speag	D5GHzV2	1160	Apr. 25, 2024	3 Years
5	ELI Phantom	Speag	ELI Phantom V5.0	1128	N/A	N/A
6	Power Amplifier	Talent Microwave	TLPA1G18G-40-3 3-HS	220330003	Jan. 20, 2024	1 Year
7	DC Source metter	Iteck	IT6154	0061041267682 01001	Jun. 29, 2024	1 Year
8	Vector Network Analyzer	Agilent	E5071C	MY46102965	Jan. 20, 2024	1 Year
9	Signal Generator	Keysight	N5173B	MY59101420	Jan. 20, 2024	1 Year
10	Smart Power Sensor	R&S	NRP18S	101333	Jun. 01, 2024	1 Year
11	Smart Power Sensor	R&S	NRP-Z21	102209	Jan. 20, 2024	1 Year
12	3.5mm Economy Calibration Kit	Agilent	85052D	MY43252246	Nov. 10, 2023	1 Year
13	Dielectric Assessment Kit	Speag	DAK-3.5	1226	Jan. 24, 2022	3 Years
14	Directional Coupler	Talent Microwave	TC-05180-20S	210628013	Jan. 20, 2024	1 Year

Note:

1. "N/A" denotes no model name, serial No. or calibration specified.

2.

1) Per KDB865664 D01 requirements for dipole calibration, the test laboratory has adopted three-year extended calibration interval. Each measured dipole is expected to evaluate with the following criteria at least on annual interval in Appendix C.

a) There is no physical damage on the dipole;

b) System check with specific dipole is within 10% of calibrated value;

c) The most recent return-loss result, measured at least annually, deviates by no more than 20% from the previous measurement;

d) The most recent measurement of the real or imaginary parts of the impedance, measured at least annually is within 5Ω from the previous measurement.

2) Network analyzer probe calibration against air, distilled water and a short block performed before measuring liquid parameters.

2. RF EMISSIONS MEASUREMENT

2.1 TEST FACILITY

The test facilities used to collect the test data in this report is SAR room at the location of Room 108-116, 309-310, Building 2, No.1, Yile Road, Songshan Lake Zone, Dongguan City, Guangdong, People's Republic of China.

BTL's Registration Number for FCC: 747969

BTL's Designation Number for FCC: CN1377.

2.2 MEASUREMENT UNCERTAINTY

Uncertainty Budget for Frequency range of 300 MHz to 3 GHz

Symbol	Input quantity X_i (source of uncertainty)	Unc. Value ($\pm\%$)	Prob. Dist.	Div.	ci (1g)	ci (10g)	Std.Unc. (1g) ($\pm\%$)	Std.Unc. (10g) ($\pm\%$)
Measurement system errors								
CF	Probe calibration($\pm\%$)	11.0	N	2	1	1	5.5	5.5
CF_{drift}	Probe calibration drift($\pm\%$)	1.7	R	$\sqrt{3}$	1	1	1.0	1.0
LIN	Probe linearity and detection limit($\pm\%$)	4.7	R	$\sqrt{3}$	1	1	2.7	2.7
BBS	Broadband signal($\pm\%$)	3.0	R	$\sqrt{3}$	1	1	1.7	1.7
ISO	Probe isotropy($\pm\%$)	7.6	R	$\sqrt{3}$	1	1	4.4	4.4
DAE	Other probe and data acquisition errors($\pm\%$)	0.7	N	1	1	1	0.7	0.7
AMB	RF ambient and noise($\pm\%$)	1.8	N	1	1	1	1.8	1.8
Δ_{xyz}	Probe positioning errors(\pm mm)	0.006	N	1	0.14	0.14	0.08	0.08
DAT	Data processing errors($\pm\%$)	1.2	N	1	1	1	1.2	1.2
Phantom and device (DUT or validation antenna) errors								
LIQ(σ)	Conductivity (meas.)($\pm\%$)	0.8	N	1	0.78	0.71	0.7	0.6
LIQ(T_c)	Conductivity (temp.)($\pm\%$)	4.16	R	$\sqrt{3}$	0.78	0.71	1.9	1.7
EPS	Phantom Permittivity($\pm\%$)	14	R	$\sqrt{3}$	0	0	0.0	0.0
DIS	Distance DUT - TSL($\pm\%$)	2	N	1	2	2	4.0	4.0
D_{xyz}	Device Positioning($\pm\%$)	0.1	N	1	1	1	0.1	0.1
H	Device Holder($\pm\%$)	2.1	N	1	1	1	2.1	2.1
MOD	DUT Modulationm($\pm\%$)	2.4	R	$\sqrt{3}$	1	1	1.4	1.4
TAS	Time-average SAR($\pm\%$)	1.7	R	$\sqrt{3}$	1	1	1.0	1.0
RF_{drift}	DUT drift($\pm\%$)	1.3	N	1	1	1	1.3	1.3
VAL	Val Antenna Unc.($\pm\%$)	0	N	1	1	1	0.0	0.0
Pin	Unc. Input Power($\pm\%$)	0	N	1	1	1	0.0	0.0
Corrections to the SAR result								
C(ϵ',σ)	Deviation to Target($\pm\%$)	1.9	N	1	1	0.84	1.9	1.6
C(R)	SAR scaling($\pm\%$)	0	R	$\sqrt{3}$	1	1	0.0	0.0
$u(\Delta SAR)$	Combined uncertainty						9.9	9.8
	Coverage Factor for 95%						k=2	k=2
U	Expanded uncertainty					U =	19.9	19.7

a Other probability distributions and divisors may be used if they better represent available knowledge of the quantities concerned.

Uncertainty Budget for Frequency range of 3 GHz to 6 GHz

Symbol	Input quantity X_i (source of uncertainty)	Unc. Value (±%)	Prob. Dist.	Div.	ci (1g)	ci (10g)	Std.Unc. (1g) (±%)	Std.Unc. (10g) (±%)
Measurement system errors								
CF	Probe calibration(±%)	13.1	N	2	1	1	6.6	6.6
CF_{drift}	Probe calibration drift(±%)	1.7	R	$\sqrt{3}$	1	1	1.0	1.0
LIN	Probe linearity and detection limit(±%)	4.7	R	$\sqrt{3}$	1	1	2.7	2.7
BBS	Broadband signal(±%)	2.6	R	$\sqrt{3}$	1	1	1.5	1.5
ISO	Probe isotropy(±%)	7.6	R	$\sqrt{3}$	1	1	4.4	4.4
DAE	Other probe and data acquisition errors(±%)	1.2	N	1	1	1	1.2	1.2
AMB	RF ambient and noise(±%)	1.8	N	1	1	1	1.8	1.8
Δxyz	Probe positioning errors(±mm)	0.005	N	1	0.29	0.29	0.15	0.15
DAT	Data processing errors(±%)	2.3	N	1	1	1	2.3	2.3
Phantom and device (DUT or validation antenna) errors								
LIQ(σ)	Conductivity (meas.)(±%)	0.7	N	1	0.78	0.71	0.6	0.5
LIQ(Tc)	Conductivity (temp.)(±%)	2.45	R	$\sqrt{3}$	0.78	0.71	1.1	1.0
EPS	Phantom Permittivity(±%)	14	R	$\sqrt{3}$	0.25	0.25	2.0	2.0
DIS	Distance DUT - TSL(±%)	2	N	1	2	2	4.0	4.0
D_{xyz}	Device Positioning(±%)	0.1	N	1	1	1	0.1	0.1
H	Device Holder(±%)	1.9	N	1	1	1	1.9	1.9
MOD	DUT Modulationm(±%)	2.4	R	$\sqrt{3}$	1	1	1.4	1.4
TAS	Time-average SAR(±%)	1.7	R	$\sqrt{3}$	1	1	1.0	1.0
RF_{drift}	DUT drift(±%)	1.1	N	1	1	1	1.1	1.1
VAL	Val Antenna Unc.(±%)	0	N	1	1	1	0.0	0.0
Pin	Unc. Input Power(±%)	0	N	1	1	1	0.0	0.0
Corrections to the SAR result								
C(ε',σ)	Deviation to Target(±%)	1.9	N	1	1	0.84	1.9	1.6
C(R)	SAR scaling(±%)	0	R	$\sqrt{3}$	1	1	0.0	0.0
u(ΔSAR)	Combined uncertainty						10.8	10.7
	Coverage Factor for 95%						k=2	k=2
U	Expanded uncertainty					U =	21.5	21.4
a Other probability distributions and divisors may be used if they better represent available knowledge of the quantities concerned.								

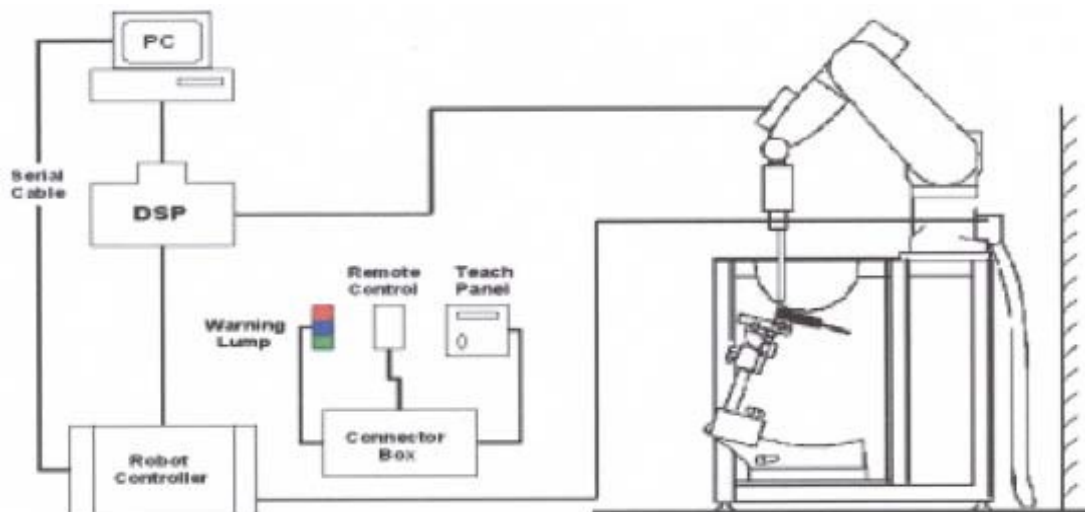
3. SAR MEASUREMENTS SYSTEM CONFIGURATION

3.1 SAR MEASUREMENT SET-UP

The DASY5 system for performing compliance tests consists of the following items:

1. A standard high precision 6-axis robot (Stäubli RX family) with controller and software. An arm extension for accommodating the data acquisition electronics (DAE).
2. A dosimetric probe, i.e. an isotropic E-field probe optimized and calibrated for usage in tissue simulating liquid. The probe is equipped with an optical surface detector system.
3. A data acquisition electronic (DAE) which performs the signal amplification, signal multiplexing, AD-conversion, offset measurements, mechanical surface detection, collision detection, etc. The unit is battery powered with standard or rechargeable batteries. The signal is optically transmitted to the EOC.
4. A unit to operate the optical surface detector which is connected to the EOC.
5. The Electro-Optical Coupler (EOC) performs the conversion from the optical into a digital electric signal of the DAE. The EOC is connected to the DASY5 measurement server.
6. The DASY5 measurement server, which performs all real-time data evaluation for field measurements and surface detection, controls robot movements and handles safety operation. A computer operating Windows.
7. DASY5 software and SEMCAD data evaluation software.
8. Remote control with teach panel and additional circuitry for robot safety such as warning lamps, etc.
9. The generic twin phantom enabling the testing of left-hand and right-hand usage.
10. The device holder for handheld mobile phones.
11. Tissue simulating liquid mixed according to the given recipes.
12. System validation dipoles allowing to validate the proper functioning of the system.

3.1.1 TEST SETUP LAYOUT



3.2 DASY5 E-FIELD PROBE SYSTEM

The SAR measurements were conducted with the dosimetric probe EX3DV4 (manufactured by SPEAG), designed in the classical triangular configuration and optimized for dosimetric valuation.

3.2.1 PROBE SPECIFICATION

EX3DV4

Construction	Symmetrical design with triangular core Interleaved sensors Built-in shielding against static charges PEEK enclosure material (resistant to organic solvents, e.g., DGBE)
Calibration	ISO/IEC 17025 calibration service available
Frequency	10 MHz to 6 GHz Linearity: ± 0.2 dB (30 MHz to 6 GHz)
Directivity	± 0.3 dB in HSL (rotation around probe axis) ± 0.5 dB in tissue material (rotation normal to probe axis)
Dynamic Range	10 μ W/g to > 100 mW/g Linearity: ± 0.2 dB
Dimensions	Overall length: 330 mm (Tip: 20 mm) Tip diameter: 2.5 mm (Body: 12 mm) Distance from probe tip to dipole centers: 1.0 mm



E-field Probe

3.2.2 E-FIELD PROBE CALIBRATION

Each probe is calibrated according to an dosimetric assessment procedure with accuracy better than $\pm 10\%$. The spherical isotropy was evaluated and found to be better than $\pm 0.25\text{dB}$. The sensitivity parameters (NormX, NormY, NormZ), the diode compression parameter (DCP) and the conversion factor (ConvF) of the probe are tested.

The free space E-field from amplified probe outputs is determined in a test chamber. This is performed in a TEM cell for frequencies below 1 GHz, and in a wave guide above 1 GHz for free space. For the free space calibration, the probe is placed in the volumetric center of the cavity and at the proper orientation with the field. The probe is then rotated 360 degrees.

E-field temperature correlation calibration is performed in a flat phantom filled with the appropriate simulated brain tissue. The measured free space E-field in the medium correlates to temperature rise in a dielectric medium. For temperature correlation calibration a RF transparent thermistor-based temperature probe is used in conjunction with the E-field probe.

$$\text{SAR} = C \frac{\Delta T}{\Delta t}$$

Where: Δt =Exposure time (30 seconds),

C =Heat capacity of tissue (brain or muscle),

ΔT =Temperature increase due to RF exposure.

Or
$$\text{SAR} = \frac{|E|^2 \sigma}{\rho}$$

Where: σ =Simulated tissue conductivity,

ρ =Tissue density (kg/m³).


3.2.3 OTHER TEST EQUIPMENT

3.2.3.1 Device Holder for Transmitters

Construction: Simple but effective and easy-to-use extension for Mounting Device that facilitates the testing of larger devices (e.g., laptops, cameras, etc.) It is lightweight and fits easily on the upper part of the Mounting Device in place of the phone positioner. The extension is fully compatible with the Twin SAM, ELI and SAM v6.0 Phantoms.

Material: POM, Acrylic glass, Foam

3.2.3.2 Phantom

Model	ELI Phantom	
Construction	Phantom for compliance testing of handheld and body-mounted wireless devices in the frequency range of 30 MHz to 6 GHz. ELI is fully compatible with the IEC 62209-2 standard and all known tissue simulating liquids. ELI has been optimized regarding its performance and can be integrated into our standard phantom tables. A cover prevents evaporation of the liquid. Reference markings on the phantom allow installation of the complete setup, including all predefined phantom positions and measurement grids, by teaching three points. The phantom is compatible with all SPEAG dosimetric probes and dipoles.	
Shell Thickness	2±0.1 mm	
Filling Volume	Approx. 30 liters	
Dimensions	Length: 600 mm; Width: 190mm Height: adjustable feet	
Available	Special	

3.2.4 SCANNING PROCEDURE

The DASY5 installation includes predefined files with recommended procedures for measurements and validation. They are read-only document files and destined as fully defined but unmeasured masks. All test positions (head or body-worn) are tested with the same configuration of test steps differing only in the grid definition for the different test positions.

The “reference” and “drift” measurements are located at the beginning and end of the batch process. They measure the field drift at one single point in the liquid over the complete procedure. The indicated drift is mainly the variation of the DUT’s output power and should vary max. $\pm 5\%$.

The “surface check” measurement tests the optical surface detection system of the DASY5 system by repeatedly detecting the surface with the optical and mechanical surface detector and comparing the results. The output gives the detecting heights of both systems, the difference between the two systems and the standard deviation of the detection repeatability. Air bubbles or refraction in the liquid due to separation of the sugar-water mixture gives poor repeatability (above $\pm 0.1\text{mm}$). To prevent wrong results tests are only executed when the liquid is free of air bubbles. The difference between the optical surface detection and the actual surface depends on the probe and is specified with each probe. (It does not depend on the surface reflectivity or the probe angle to the surface within $\pm 30^\circ$.)

- Area Scan

The “area scan” measures the SAR above the DUT or verification dipole on a parallel plane to the surface. It is used to locate the approximate location of the peak SAR with 2D spline interpolation. The robot performs a stepped movement along one grid axis while the local electrical field strength is measured by the probe. The probe is touching the surface of the SAM during acquisition of measurement values. The standard scan uses large grid spacing for faster measurement. Standard grid spacing for head measurements is 15 mm in x- and y- dimension ($\leq 2\text{GHz}$), 12 mm in x- and y- dimension (2-4 GHz) and 10mm in x- and y- dimension (4-6GHz). If a finer resolution is needed, the grid spacing can be reduced. Grid spacing and orientation have no influence on the SAR result. For special applications where the standard scan method does not find the peak SAR within the grid, e.g. mobile phones with flip cover, the grid can be adapted in orientation.

- Zoom Scan

A “zoom scan” measures the field in a volume around the 2D peak SAR value acquired in the previous “coarse” scan. This is a fine grid with maximum scan spatial resolution: $\Delta x_{\text{zoom}}, \Delta y_{\text{zoom}} \leq 2\text{GHz} \rightarrow 8\text{mm}$, 2-4GHz $\rightarrow 5\text{mm}$ and 4-6 GHz $\rightarrow 4\text{mm}$; $\Delta z_{\text{zoom}} \leq 3\text{GHz} \rightarrow 5\text{mm}$, 3-4 GHz $\rightarrow 4\text{mm}$ and 4-6GHz $\rightarrow 2\text{mm}$ where the robot additionally moves the probe along the z-axis away from the bottom of the Phantom. DASY is also able to perform repeated zoom scans if more than 1 peak is found during area scan. In this document, the evaluated peak 1g and 10g averaged SAR values are shown in the 2D-graphics in Appendix B. Test results relevant for the specified standard (see chapter 1.4.) are shown in table form in chapter 7.2.

A Z-axis scan measures the total SAR value at the x-and y-position of the maximum SAR value found during the cube scan. The probe is moved away in z-direction from the bottom of the SAM phantom in 2 mm steps. This measurement shows the continuity of the liquid and can - depending in the field strength – also show the liquid depth.

The following table summarizes the area scan and zoom scan resolutions per FCC KDB 865664D01:

Frequency	Maximun Area Scan resolution ($\Delta x_{\text{area}}, \Delta y_{\text{area}}$)	Maximun Zoom Scan spatial resolution ($\Delta x_{\text{Zoom}}, \Delta y_{\text{Zoom}}$)	Maximun Zoom Scan spatial resolution			Minimum zoom scan volume (x,y,z)
			Uniform Grid	Graded Grad		
			$\Delta z_{\text{Zoom}}(n)$	$\Delta z_{\text{Zoom}}(1)^*$	$\Delta z_{\text{Zoom}}(n>1)^*$	
$\leq 2\text{GHz}$	$\leq 15\text{mm}$	$\leq 8\text{mm}$	$\leq 5\text{mm}$	$\leq 4\text{mm}$	$\leq 1.5^* \Delta z_{\text{Zoom}}(n-1)$	$\geq 30\text{mm}$
2-3GHz	$\leq 12\text{mm}$	$\leq 5\text{mm}$	$\leq 5\text{mm}$	$\leq 4\text{mm}$	$\leq 1.5^* \Delta z_{\text{Zoom}}(n-1)$	$\geq 30\text{mm}$
3-4GHz	$\leq 12\text{mm}$	$\leq 5\text{mm}$	$\leq 4\text{mm}$	$\leq 3\text{mm}$	$\leq 1.5^* \Delta z_{\text{Zoom}}(n-1)$	$\geq 28\text{mm}$
4-5GHz	$\leq 10\text{mm}$	$\leq 4\text{mm}$	$\leq 3\text{mm}$	$\leq 2.5\text{mm}$	$\leq 1.5^* \Delta z_{\text{Zoom}}(n-1)$	$\geq 25\text{mm}$
5-6GHz	$\leq 10\text{mm}$	$\leq 4\text{mm}$	$\leq 2\text{mm}$	$\leq 2\text{mm}$	$\leq 1.5^* \Delta z_{\text{Zoom}}(n-1)$	$\geq 22\text{mm}$

3.2.5 SPATIAL PEAK SAR EVALUATION

The spatial peak SAR - value for 1 and 10 g is evaluated after the Cube measurements have been done. The basis of the evaluation are the SAR values measured at the points of the fine cube grid consisting of 5 x 5 x 7 points (with 8mm horizontal resolution) or 7 x 7 x 7 points (with 5mm horizontal resolution) or 8 x 8 x 7 points (with 4mm horizontal resolution). The algorithm that finds the maximal averaged volume is separated into three different stages.

- The data between the dipole center of the probe and the surface of the phantom are extrapolated. This data cannot be measured since the center of the dipole is 2.7 mm away from the tip of the probe and the distance between the surface and the lowest measuring point is about 1 mm (see probe calibration sheet). The extrapolated data from a cube measurement can be visualized by selecting "Graph Evaluated".
- The maximum interpolated value is searched with a straight-forward algorithm. Around this maximum the SAR - values averaged over the spatial volumes (1g or 10 g) are computed using the 3d-spline interpolation algorithm. If the volume cannot be evaluated (i.e., if a part of the grid was cut off by the boundary of the measurement area) the evaluation will be started on the corners of the bottom plane of the cube.
- All neighboring volumes are evaluated until no neighboring volume with a higher average value is found.

Extrapolation

The extrapolation is based on a least square algorithm [W. Gander, Computer mathematic, p.168-180]. Through the points in the first 3 cm along the z-axis, polynomials of order four are calculated. These polynomials are then used to evaluate the points between the surface and the probe tip. The points, calculated from the surface, have a distance of 1 mm from each other.

Interpolation

The interpolation of the points is done with a 3d-Spline. The 3d-Spline is composed of three one-dimensional splines with the "Not a knot"-condition [W. Gander, Computer mathematic, p.141-150] (x, y and z -direction) [Numerical Recipes in C, Second Edition, p.123ff].

Volume Averaging

At First the size of the cube is calculated. Then the volume is integrated with the trapezoidal algorithm. 8000 points (20x20x20) are interpolated to calculate the average.

Advanced Extrapolation

DASY5 uses the advanced extrapolation option which is able to compensate boundary effects on E-field probes.

3.2.6 DATA STORAGE AND EVALUATION

3.2.6.1 Data Storage

The DASY5 software stores the acquired data from the data acquisition electronics as raw data (in microvolt readings from the probe sensors), together with all necessary software parameters for the data evaluation (probe calibration data, liquid parameters and device frequency and modulation data) in measurement files with the extension "DAE". The software evaluates the desired unit and format for output each time the data is visualized or exported. This allows verification of the complete software setup even after the measurement and allows correction of incorrect parameter settings. For example, if a measurement has been performed with a wrong crest factor parameter in the device setup, the parameter can be corrected afterwards and the data can be re-evaluated.

The measured data can be visualized or exported in different units or formats, depending on the selected probe type ([V/m], [A/m], [°C], [mW/g], [mW/cm²], [dBrel], etc.). Some of these units are not available in certain situations or show meaningless results, e.g., a SAR output in a lossless media will always be zero. Raw data can also be exported to perform the evaluation with other software packages.

3.2.7 DATA EVALUATION BY SEMCAD

The SEMCAD software automatically executes the following procedures to calculate the field units from the microvolt readings at the probe connector. The parameters used in the evaluation are stored in the configuration modules of the software:

Probe parameters:	Sensitivity	Normi, ai0, ai1,ai2
	Conversion factor	ConvFi
	Diode compression point	Dcpj
Device parameters:	Frequency	f
	Crest factor	cf
Media parameters:	Conductivity	
	Density	

These parameters must be set correctly in the software. They can be found in the component documents or they can be imported into the software from the configuration files issued for the DASY5 components. In the direct measuring mode of the multimeter option, the parameters of the actual system setup are used. In the scan visualization and export modes, the parameters stored in the corresponding document files are used.

The first step of the evaluation is a linearization of the filtered input signal to account for the compression characteristics of the detector diode. The compensation depends on the input signal, the diode type and the DC-transmission factor from the diode to the evaluation electronics.

If the exciting field is pulsed, the crest factor of the signal must be known to correctly compensate for peak power. The formula for each channel can be given as:

$$V_i = U_i + U_i^2 \cdot cf / dcp_i$$

With	V_i = compensated signal of channel i	(i = x,y,z)
	U_i = input signal of channel i	(i = x, y,z)
	cf=crest factor of exciting field	(DASY parameter)
	dcpj=diode compression point	(DASY parameter)

From the compensated input signals the primary field data for each channel can be evaluated:

$$\text{E-field probes: } E_i = (V_i / \text{Norm}_i \cdot \text{ConvF})^{1/2}$$

$$\text{H-field probes: } H_i = (V_i)^{1/2} \cdot (a_{i0} + a_{i1}f + a_{i2}f^2) / f$$

With V_i = compensated signal of channel i (i = x, y, z)

Norm_i = sensor sensitivity of channel i (i = x, y, z)
[mV/(V/m)²] for E-field Probes

ConvF = sensitivity enhancement in solution

a_{ij} = sensor sensitivity factors for H-field probes

f = carrier frequency [GHz]

E_i = electric field strength of channel i in V/m

H_i = magnetic field strength of channel i in A/m

The RSS value of the field components gives the total field strength (Hermitian magnitude):

$$E_{\text{tot}} = (E_x^2 + E_y^2 + E_z^2)^{1/2}$$

The primary field data are used to calculate the derived field units.

$$\text{SAR} = (E_{\text{tot}})^2 \cdot \sigma / (\rho \cdot 1000)$$

With SAR = local specific absorption rate in mW/g

E_{tot} = total field strength in V/m
= conductivity in [mho/m] or [Siemens/m]
= equivalent tissue density in g/cm³

Note that the density is normally set to 1 (or 1.06), to account for actual brain density rather than the density of the simulation liquid. The power flow density is calculated assuming the excitation field to be a free space field.

$$P_{\text{pwe}} = E_{\text{tot}}^2 / 3770 \text{ or } P_{\text{pwe}} = H_{\text{tot}}^2 \cdot 37.7$$

With P_{pwe} = equivalent power density of a plane wave in mW/cm²

E_{tot} = total field strength in V/m

H_{tot} = total magnetic field strength in A/m

4. SYSTEM VERIFICATION PROCEDURE

4.1 TISSUE VERIFICATION

The simulating liquids should be checked at the beginning of a series of SAR measurements to determine if the dielectric parameters are within the tolerances of the specified target values. The measured conductivity and relative permittivity should be within $\pm 5\%$ of the target values.

The following materials are used for producing the tissue-equivalent materials.

Tissue Type	Bactericide	DGBE	HEC	NaCl	Sucrose	Triton X-100	Water	Diethylene Glycol Mono-hexylether
Head 2450	-	45.0	-	0.1	-	-	54.9	-
Head 5G	-	-	-	-	-	17.2	65.5	17.3

Salt: 99+% Pure Sodium Chloride; Sugar: 98+% Pure Sucrose; Water: De-ionized, 16M + resistivity

HEC: Hydroxyethyl Cellulose; DGBE: 99+% Di(ethylene glycol) butyl ether,[2-(2-butoxyethoxy)ethanol]

Triton X-100(ultra pure): Polyethylene glycol mono [4-(1,1,3,3-tetramethylbutyl)phenyl]ether

Tissue Verification									
Tissue Type	Frequency (MHz)	Liquid Temp. (°C)	Conductivity (σ)	Permittivity (ϵ_r)	Targeted Conductivity (σ)	Targeted Permittivity (ϵ_r)	Deviation Conductivity (σ) (%)	Deviation Permittivity (ϵ_r) (%)	Date
Head	2450	22.5	1.820	39.639	1.80	39.2	1.11	1.12	Nov. 01, 2024
Head	5250	22.3	4.780	35.811	4.71	36.0	1.49	-0.39	Oct. 21, 2024
Head	5600	22.6	5.222	34.831	5.07	35.5	3.00	-1.88	Oct. 22, 2024
Head	5750	22.1	5.409	34.563	5.22	35.4	3.62	-2.23	Oct. 23, 2024

Note:

1)The dielectric parameters of the tissue-equivalent liquid should be measured under similar ambient conditions and within 2 °C of the conditions expected during the SAR evaluation to satisfy protocol requirements.

2)KDB 865664 was ensured to be applied for probe calibration frequencies greater than or equal to 50MHz of the EUT frequencies.

3)The above measured tissue parameters were used in the DASY software to perform interpolation via the DASY software to determine actual dielectric parameters at the test frequencies. The SAR test plots may slightly differ from the table above since the DASY rounds to three significant digits.

4.2 SYSTEM CHECK

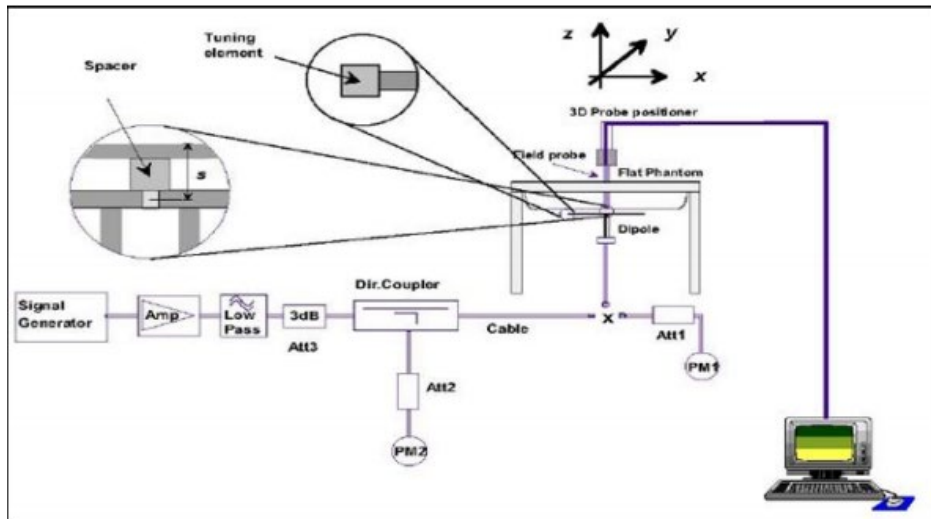
The system check is performed for verifying the accuracy of the complete measurement system and performance of the software. The system check is performed with tissue equivalent material according to IEEE 1528 (described above). The following table shows system check results for all frequency bands and tissue liquids used during the tests.

System Check	Date	Frequency (MHz)	Targeted SAR 1g (W/kg)	Measured SAR 1g (W/kg)	normalized SAR 1g (W/kg)	Deviation (%)	Dipole S/N
Head	Nov. 01, 2024	2450	52.10	13.10	52.40	0.58	919
Head	Oct. 21, 2024	5250	78.00	7.69	76.90	-1.41	1160
Head	Oct. 22, 2024	5600	80.60	7.89	78.90	-2.11	1160
Head	Oct. 23, 2024	5750	76.50	7.74	77.40	1.18	1160

4.3 SYSTEM CHECK PROCEDURE

The system check is performed by using a system check dipole which is positioned parallel to the planar part of the SAM phantom at the reference point. The distance of the dipole to the SAM phantom is determined by a plexiglass spacer. The dipole is connected to the signal source consisting of signal generator and amplifier via a directional coupler, N-connector cable and adaption to SMA. It is fed with a power of 250mW (below 3GHz) or 100mW (3-6GHz). To adjust this power a power meter is used.

The power sensor is connected to the cable before the system check to measure the power at this point and do adjustments at the signal generator. At the outputs of the directional coupler both return loss as well as forward power are controlled during the system check to make sure that emitted power at the dipole is kept constant. This can also be checked by the power drift measurement after the test. System check results have to be equal or near the values determined during dipole calibration (target SAR in table above) with the relevant liquids and test system ($\pm 10\%$).



5. SAR MEASUREMENT VARIABILITY AND UNCERTAINTY

5.1 SAR MEASUREMENT VARIABILITY

Per KDB865664 D01 SAR measurement 100 MHz to 6 GHz, SAR measurement variability must be assessed for each frequency band, which is determined by the SAR probe calibration point and tissue-equivalent medium used for the device measurements. The additional measurements are repeated after the completion of all measurements requiring the same head or body tissue-equivalent medium in a frequency band. The test device should be returned to ambient conditions (normal room temperature) with the battery fully charged before it is re-mounted on the device holder for the repeated measurement(s) to minimize any unexpected variations in the repeated results.

- 1) Repeated measurement is not required when the original highest measured SAR is < 0.80 W/kg; steps 2) through 4) do not apply.
- 2) When the original highest measured SAR is ≥ 0.80 W/kg, repeat that measurement once.
- 3) Perform a second repeated measurement only if the ratio of largest to smallest SAR for the original and first repeated measurements is > 1.20 or when the original or repeated measurement is ≥ 1.45 W/kg ($\sim 10\%$ from the 1-g SAR limit).
- 4) Perform a third repeated measurement only if the original, first or second repeated measurement is ≥ 1.5 W/kg and the ratio of largest to smallest SAR for the original, first and second repeated measurements is > 1.20 .

The same procedures should be adapted for measurements according to extremity and occupational exposure limits by applying a factor of 2.5 for extremity exposure and a factor of 5 for occupational exposure to the corresponding SAR thresholds.

The detailed repeated measurement results are shown in Section 7.2.

6. OPERATIONAL CONDITIONS DURING TEST

6.1 TEST POSITION

Test all USB orientations [see figure below: (A) Horizontal-Up, (B) Horizontal-Down, (C) Vertical-Front, and (D) Vertical-Back and Tip] with a device-to-phantom separation distance of 5 mm.

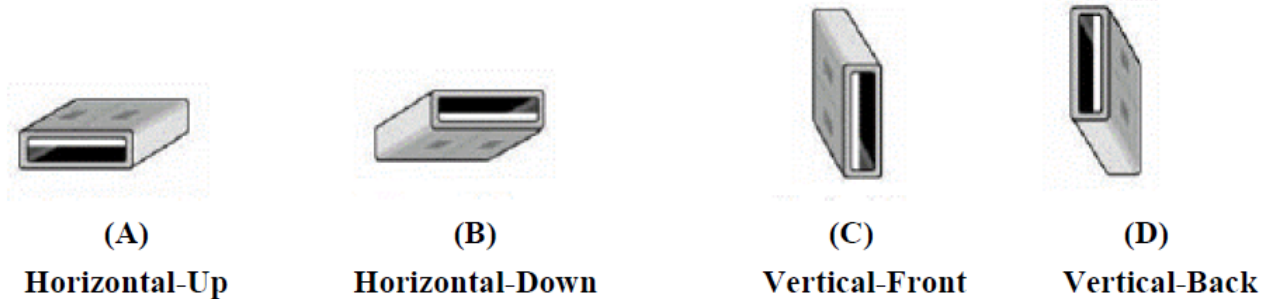
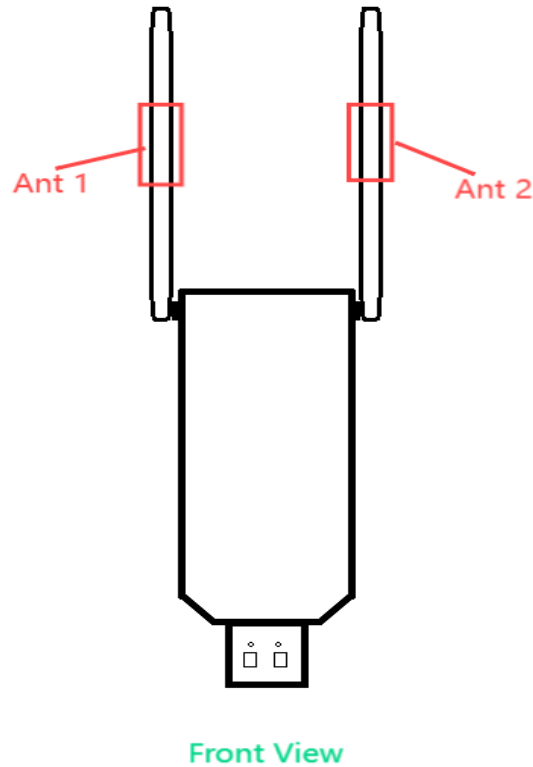


Fig 6.1 USB Connector Orientations Implemented on Laptop Computers

The location of the antennas inside the EUT is shown as below:

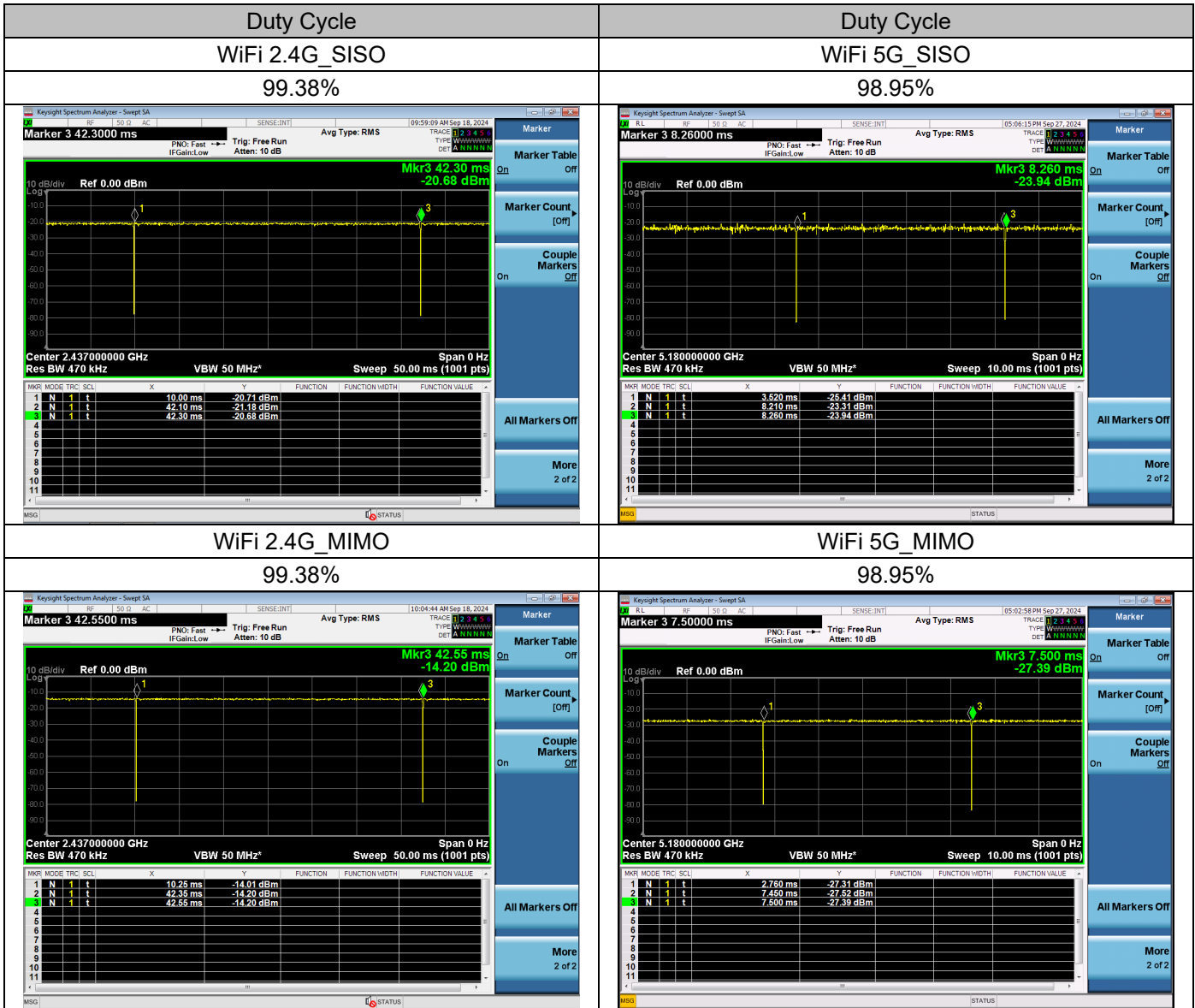


6.2 TEST CONFIGURATION

6.2.1 WIFI TEST CONFIGURATION

For WLAN SAR testing, WLAN engineering testing software installed on the DUT can provide continuous transmitting RF signal.

For WiFi SAR testing, a communication link is set up with the test mode software for WiFi mode test. During the test, at the each test frequency channel, the EUT is operated at the RF continuous emission mode. The test procedures in KDB 248227 D01 are applied.



6.2.1.1 WLAN 2.4G SAR Test Requirements

802.11b DSSS SAR Test Requirements

SAR is measured for 2.4 GHz 802.11b DSSS using either a fixed test position or, when applicable, the initial test position procedure. SAR test reduction is determined according to the following:

- 1) When the reported SAR of the highest measured maximum output power channel for the exposure configuration is ≤ 0.8 W/kg, no further SAR testing is required for 802.11b DSSS in that exposure configuration.
- 2) When the reported SAR is > 0.8 W/kg, SAR is required for that exposure configuration using the next highest measured output power channel. When any reported SAR is > 1.2 W/kg, SAR is required for the third channel; i.e., all channels require testing.

2.4 GHz 802.11g/n OFDM SAR Test Exclusion Requirements

When SAR measurement is required for 2.4 GHz 802.11g/n OFDM configurations, the measurement and test reduction procedures for OFDM are applied. SAR is not required for the following 2.4 GHz OFDM conditions.

- 1) When KDB Publication 447498 SAR test exclusion applies to the OFDM configuration.
- 2) When the highest reported SAR for DSSS is adjusted by the ratio of OFDM to DSSS specified maximum output power and the adjusted SAR is ≤ 1.2 W/kg.

SAR Test Requirements for OFDM configurations

When SAR measurement is required for 2.4 GHz 802.11g/n OFDM configurations, each stand alone.

And frequency aggregated band is considered separately for SAR test reduction. In applying the initial test configuration and subsequent test configuration procedures, the 802.11 transmission configuration with the highest specified maximum output power and the channel within a test configuration with the highest measured maximum output power should be clearly distinguished to apply the procedures.

6.2.1.2 WLAN 5G SAR Test Requirements

✧ U-NII-1 and U-NII-2A Band

For devices that operate in both U-NII-1 and U-NII-2A bands, when the same maximum output power is specified for both bands, begin SAR measurement in U-NII-2A band by applying the OFDM SAR requirements. If the highest reported SAR for a test configuration is ≤ 1.2 W/kg, SAR is not required for U-NII-1 band for that configuration (802.11 mode and exposure condition); otherwise, both bands are tested independently for SAR. When different maximum output power is specified for the bands, begin SAR measurement in the band with higher specified maximum output power. The highest reported SAR for the tested configuration is adjusted by the ratio of lower to higher specified maximum output power for the two bands. When the adjusted SAR is ≤ 1.2 W/kg, SAR is not required for the band with lower maximum output power in that test configuration; otherwise, both bands are tested independently for SAR.

✧ U-NII-2C, U-NII-3 Bands

The frequency range covered by these bands is 380 MHz (5.47 – 5.85 GHz), which requires a minimum of at least two SAR probe calibration frequency points to support SAR measurements. When Terminal Doppler Weather Radar (TDWR) restriction applies, the channels at 5.60 – 5.65 GHz in U-NII-2C band must be disabled with acceptable mechanisms and documented in the equipment certification.

Unless band gap channels are permanently disabled, they must be considered for SAR testing.

To maintain SAR measurement accuracy and to facilitate test reduction, the channels in U-NII-2C band above 5.65 GHz may be grouped with the 5.8 GHz channels in U-NII-3 or §15.247 band to enable two SAR probe calibration frequency points to cover the bands, including the band gap channels.¹¹ When band gap channels are supported and the bands are not aggregated for SAR testing, band gap channels must be considered independently in each band according to the normally required OFDM SAR measurement and probe calibration frequency points requirements.

6.2.1.3 OFDM transmission mode and SAR test channel selection

For the 2.4GHz and 5GHz bands, when the same maximum output power was specified for multiple OFDM transmission mode configurations in a frequency band or aggregated band, SAR is measured using the configuration with the largest channel bandwidth, lowest order modulation and lowest data rate. When the maximum output power of a channel is the same for equivalent OFDM configurations (for example 802.11a, 802.11n and 802.11ac, or 802.11g and 802.11n, with the same channel bandwidth, modulation, and data rate, etc.), the lower order 802.11 mode (i.e. 802.11a then 802.11n and 802.11ac, or 802.11g then 802.11n) is used for SAR measurement. When the maximum output power is the same for multiple test channels, either according to the default or additional power measurement requirements, SAR is measured using the channel closest to the middle of the frequency band or aggregated band. When there are multiple channels with the same maximum output power, SAR is measured using the higher number channel.

6.2.1.4 Initial test configuration procedure

For OFDM, in both 2.4G and 5GHz bands, an initial test configuration is determined for each frequency band and aggregated band, according to the transmission mode with the highest maximum output power specified for SAR measurements. When the same maximum output power is specified for multiple OFDM transmission mode configurations in a frequency band or aggregated band, SAR is measured using the configuration(s) with the largest channel bandwidth, lowest order modulation, and lowest data rate. If the average RF output powers of the highest identical transmission modes are within 0.25 dB of each other, mid channel of the transmission mode with highest average RF output powers is the initial test channel. Otherwise, the channel of the transmission mode with the highest average RF output power will be the initial test configuration.

When the reported SAR is ≤ 0.8 W/kg, no additional measurements on other test channels are required. Otherwise, SAR is evaluated using the subsequent highest average RF output channel until the reported SAR result is ≤ 1.2 W/kg or all channels are measured. When there are multiple untested channels having the same subsequent highest average RF output power, the channel with higher frequency from the lowest 802.11 mode is considered for SAR measurement.

7. TEST RESULT

7.1 CONDUCTED POWER RESULTS

7.1.1 CONDUCTED POWER MEASUREMENTS OF WIFI

1. Conducted power measurements of WiFi 2.4G

Band	Mode	Channel	Frequency (MHz)	Data Rate (Mbps)	Max. Tune up	Average Power(dBm)
2.4G_WiFi 1TX_ANT 1	802.11b	1	2412	1	10.50	No Require
		2	2417		10.50	
		6	2437		10.50	
		10	2457		10.50	
		11	2462		10.50	
	802.11g	1	2412	6	10.50	
		2	2417		10.50	
		6	2437		10.50	
		10	2457		10.50	
		11	2462		10.50	
	802.11n HT20	1	2412	MCS0	10.50	
		2	2417		10.50	
		6	2437		10.50	
		10	2457		10.50	
		11	2462		10.50	
	802.11n HT40	3	2422	MCS0	10.50	
		4	2427		10.50	
		6	2437		10.50	
		8	2447		10.50	
		9	2452		10.50	
	802.11ax HE20	1	2412	MCS0	10.50	
		2	2417		10.50	
		6	2437		10.50	
		10	2457		10.50	
		11	2462		10.50	
	802.11ax HE40	3	2422	MCS0	13.50	13.31
		4	2427		13.50	13.42
		6	2437		13.50	13.24
		8	2447		11.00	10.72
		9	2452		11.50	11.35

Band	Mode	Channel	Frequency (MHz)	Data Rate (Mbps)	Max. Tune up	Average Power(dBm)
2.4G_WiFi 1TX_ ANT 2	802.11b	1	2412	1	12.00	No Require
		2	2417		12.00	
		6	2437		12.00	
		10	2457		12.00	
		11	2462		12.00	
	802.11g	1	2412	6	14.00	13.51
		2	2417		13.00	12.47
		6	2437		14.00	13.63
		10	2457		13.50	13.44
		11	2462		12.50	12.39
	802.11n HT20	1	2412	MCS0	12.00	No Require
		2	2417		12.00	
		6	2437		12.00	
		10	2457		12.00	
		11	2462		12.00	
	802.11n HT40	3	2422	MCS0	12.00	
		4	2427		12.00	
		6	2437		12.00	
		8	2447		12.00	
		9	2452		12.00	
	802.11ax HE20	1	2412	MCS0	12.00	
		2	2417		12.00	
		6	2437		12.00	
		10	2457		12.00	
		11	2462		12.00	
	802.11ax HE40	3	2422	MCS0	12.00	
		4	2427		12.00	
		6	2437		12.00	
		8	2447		12.00	
		9	2452		12.00	

Band	Mode	Channel	Frequency (MHz)	Data Rate (Mbps)	ANT 1 Average Power(dBm)	ANT 2 Average Power(dBm)	Max. Tune up	Total Average Power(dBm)
2.4G_WiFi 2TX_ANT 1+2	802.11b	1	2412	1	13.13	12.76	16.00	15.96
		2	2417		13.21	12.82	16.50	16.03
		6	2437		12.56	11.95	15.50	15.28
		10	2457		12.59	12.17	15.50	15.40
		11	2462		12.77	12.46	16.00	15.63
	802.11g	1	2412	6	-	-	15.00	No Require
		2	2417		-	-	15.00	
		6	2437		-	-	15.00	
		10	2457		-	-	15.00	
		11	2462		-	-	15.00	
	802.11n HT20	1	2412	MCS8	-	-	15.00	
		2	2417		-	-	15.00	
		6	2437		-	-	15.00	
		10	2457		-	-	15.00	
		11	2462		-	-	15.00	
	802.11n HT40	3	2422	MCS8	-	-	15.00	
		4	2427		-	-	15.00	
		6	2437		-	-	15.00	
		8	2447		-	-	15.00	
		9	2452		-	-	15.00	
	802.11ax HE20	1	2412	MCS8	-	-	15.00	
		2	2417		-	-	15.00	
		6	2437		-	-	15.00	
		10	2457		-	-	15.00	
		11	2462		-	-	15.00	
	802.11ax HE40	3	2422	MCS8	-	-	15.00	
		4	2427		-	-	15.00	
		6	2437		-	-	15.00	
		8	2447		-	-	15.00	
		9	2452		-	-	15.00	

Note:

- 1) The Average conducted power of WiFi 2.4G is measured with RMS detector.
- 2) The tested channel results are marks in bold.

2. Conducted power measurements of WiFi 5.2G

Band	Mode	Channel	Frequency (MHz)	Data Rate (Mbps)	Max. Tune up	Average Power(dBm)
5.2G_WiFi_1TX_ANT 1	802.11a	36	5180	6	11.50	No Require
		40	5200		11.50	
		48	5240		11.50	
	802.11n HT20	36	5180	MCS0	11.50	
		40	5200		11.50	
		48	5240		11.50	
	802.11n HT40	38	5190	MCS0	11.50	
		46	5230		11.50	
	802.11ac VHT20	36	5180	MCS0	11.50	
		40	5200		11.50	
		48	5240		11.50	
	802.11ac VHT40	38	5190	MCS0	11.50	
		46	5230		11.50	
	802.11ac VHT80	42	5210	MCS0	11.50	
	802.11ax HE20	36	5180	MCS0	14.50	14.06
		40	5200		12.00	11.91
		48	5240		14.00	13.93
	802.11ax HE40	38	5190	MCS0	11.50	No Require
		46	5230		11.50	
	802.11ax HE80	42	5210	MCS0	11.50	

Band	Mode	Channel	Frequency (MHz)	Data Rate (Mbps)	Max. Tune up	Average Power(dBm)
5.2G_WiFi_1TX_ANT 2	802.11a	36	5180	6	14.50	No Require
		40	5200		14.50	
		48	5240		14.50	
	802.11n HT20	36	5180	MCS0	14.50	
		40	5200		14.50	
		48	5240		14.50	
	802.11n HT40	38	5190	MCS0	14.50	
		46	5230		14.50	
	802.11ac VHT20	36	5180	MCS0	15.00	14.78
		40	5200		16.50	16.45
		48	5240		15.50	15.28
	802.11ac VHT40	38	5190	MCS0	14.50	No Require
		46	5230		14.50	
	802.11ac VHT80	42	5210	MCS0	14.50	
	802.11ax HE20	36	5180	MCS0	14.50	
		40	5200		14.50	
		48	5240		14.50	
	802.11ax HE40	38	5190	MCS0	14.50	
		46	5230		14.50	
	802.11ax HE80	42	5210	MCS0	14.50	

Band	Mode	Channel	Frequency (MHz)	Data Rate (Mbps)	ANT 1 Average Power(dBm)	ANT 2 Average Power(dBm)	Max. Tune up	Total Average Power(dBm)
5.2G_WiFi 2TX_ANT 1+2	802.11a	36	5180	6	-	-	15.50	No Require
		40	5200		-	-	15.50	
		48	5240		-	-	15.50	
	802.11n HT20	36	5180	MCS0	-	-	15.50	
		40	5200		-	-	15.50	
		48	5240		-	-	15.50	
	802.11n HT40	38	5190	MCS0	-	-	15.50	
		46	5230		-	-	15.50	
	802.11ac VHT20	36	5180	MCS8	15.48	17.94	20.00	19.89
		40	5200		11.46	13.98	16.00	15.91
		48	5240		12.37	14.83	17.00	16.78
	802.11ac VHT40	38	5190	MCS0	-	-	15.50	No Require
		46	5230		-	-	15.50	
	802.11ac VHT80	42	5210	MCS0	-	-	15.50	
	802.11ax HE20	36	5180	MCS0	-	-	15.50	
		40	5200		-	-	15.50	
		48	5240		-	-	15.50	
	802.11ax HE40	38	5190	MCS0	-	-	15.50	
		46	5230		-	-	15.50	
	802.11ax HE80	42	5210	MCS0	-	-	15.50	

Note:

- 1) The Average conducted power of WiFi 5.2G is measured with RMS detector.
- 2) The tested channel results are marks in bold.

3. Conducted power measurements of WiFi 5.3G

Band	Mode	Channel	Frequency (MHz)	Data Rate (Mbps)	Max. Tune up	Average Power(dBm)
5.3G_WiFi 1TX_ ANT 1	802.11a	52	5260	6	12.00	No Require
		60	5300		12.00	
		64	5320		12.00	
	802.11n HT20	52	5260	MCS0	12.00	
		60	5300		12.00	
		64	5320		12.00	
	802.11n HT40	54	5270	MCS0	12.00	
		62	5310		12.00	
	802.11ac VHT20	52	5260	MCS0	12.00	
		60	5300		12.00	
		64	5320		12.00	
	802.11ac VHT40	54	5270	MCS0	12.50	12.35
		62	5310		13.00	12.54
	802.11ac VHT80	58	5290	MCS0	12.00	No Require
	802.11ax HE20	52	5260	MCS0	12.00	
		60	5300		12.00	
		64	5320		12.00	
	802.11ax HE40	54	5270	MCS0	12.00	
		62	5310		12.00	
	802.11ax HE80	58	5290	MCS0	12.00	

Band	Mode	Channel	Frequency (MHz)	Data Rate (Mbps)	Max. Tune up	Average Power(dBm)
5.3G_WiFi 1TX_ ANT 2	802.11a	52	5260	6	14.50	No Require
		60	5300		14.50	
		64	5320		14.50	
	802.11n HT20	52	5260	MCS0	14.50	
		60	5300		14.50	
		64	5320		14.50	
	802.11n HT40	54	5270	MCS0	14.50	
		62	5310		14.50	
	802.11ac VHT20	52	5260	MCS0	14.50	
		60	5300		14.50	
		64	5320		14.50	
	802.11ac VHT40	54	5270	MCS0	14.50	
		62	5310		14.50	
	802.11ac VHT80	58	5290	MCS0	14.50	
	802.11ax HE20	52	5260	MCS0	14.50	
		60	5300		14.50	
		64	5320		14.50	
	802.11ax HE40	54	5270	MCS0	15.00	14.86
		62	5310		17.00	16.95
	802.11ax HE80	58	5290	MCS0	14.50	No Require

Band	Mode	Channel	Frequency (MHz)	Data Rate (Mbps)	ANT 1 Average Power(dBm)	ANT 2 Average Power(dBm)	Max. Tune up	Total Average Power(dBm)
5.3G_WiFi 2TX_ ANT 1+2	802.11a	52	5260	6	-	-	14.50	No Require
		60	5300		-	-	14.50	
		64	5320		-	-	14.50	
	802.11n HT20	52	5260	MCS0	-	-	14.50	
		60	5300		-	-	14.50	
		64	5320		-	-	14.50	
	802.11n HT40	54	5270	MCS0	-	-	14.50	
		62	5310		-	-	14.50	
	802.11ac VHT20	52	5260	MCS0	-	-	14.50	
		60	5300		-	-	14.50	
		64	5320		-	-	14.50	
	802.11ac VHT40	54	5270	MCS8	10.54	12.54	15.00	14.66
		62	5310		10.77	12.83	15.00	14.93
	802.11ac VHT80	58	5290	MCS0	-	-	14.50	No Require
	802.11ax HE20	52	5260	MCS0	-	-	14.50	
		60	5300		-	-	14.50	
		64	5320		-	-	14.50	
	802.11ax HE40	54	5270	MCS0	-	-	14.50	
		62	5310		-	-	14.50	
	802.11ax HE80	58	5290	MCS0	-	-	14.50	

Note:

- 1) The Average conducted power of WiFi 5.3G is measured with RMS detector.
- 2) The tested channel results are marks in bold.

4. Conducted power measurements of WiFi 5.6G

Band	Mode	Channel	Frequency (MHz)	Data Rate (Mbps)	Max. Tune up	Average Power(dBm)
5.6G_WiFi 1TX_ANT 1	802.11a	100	5500	6	13.50	No Require
		116	5580		13.50	
		140	5700		13.50	
	802.11n HT20	100	5500	MCS0	13.50	
		116	5580		13.50	
		140	5700		13.50	
	802.11n HT40	102	5510	MCS0	13.50	
		110	5550		13.50	
		134	5670		13.50	
	802.11ac VHT20	100	5500	MCS0	13.50	
		116	5580		13.50	
		140	5700		13.50	
	802.11ac VHT40	102	5510	MCS0	13.50	
		110	5550		13.50	
		134	5670		13.50	
	802.11ac VHT80	106	5530	MCS0	13.50	
		122	5610		13.50	
	802.11ax HE20	100	5500	MCS0	13.50	
		116	5580		13.50	
		140	5700		13.50	
	802.11ax HE40	102	5510	MCS0	13.50	
		110	5550		13.50	
		134	5670		13.50	
	802.11ax HE80	106	5530	MCS0	14.00	13.52
		122	5610		14.00	13.89

Band	Mode	Channel	Frequency (MHz)	Data Rate (Mbps)	Max. Tune up	Average Power(dBm)
5.6G_WiFi 1TX_ANT 2	802.11a	100	5500	6	13.00	No Require
		116	5580		13.00	
		140	5700		13.00	
	802.11n HT20	100	5500	MCS0	13.00	
		116	5580		13.00	
		140	5700		13.00	
	802.11n HT40	102	5510	MCS0	13.00	
		110	5550		13.00	
		134	5670		13.00	
	802.11ac VHT20	100	5500	MCS0	13.00	
		116	5580		13.00	
		140	5700		13.00	
	802.11ac VHT40	102	5510	MCS0	13.00	
		110	5550		13.00	
		134	5670		13.00	
	802.11ac VHT80	106	5530	MCS0	13.00	
		122	5610		13.00	
	802.11ax HE20	100	5500	MCS0	13.00	
		116	5580		13.00	
		140	5700		13.00	
	802.11ax HE40	102	5510	MCS0	14.50	14.27
		110	5550		14.00	13.72
		134	5670		13.50	13.45
	802.11ax HE80	106	5530	MCS0	13.00	No Require
		122	5610		13.00	

Band	Mode	Channel	Frequency (MHz)	Data Rate (Mbps)	ANT 1 Average Power(dBm)	ANT 2 Average Power(dBm)	Max. Tune up	Total Average Power(dBm)
5.6G_WiFi_2TX_ANT_1+2	802.11a	100	5500	6	-	-	14.50	No Require
		116	5580		-	-	14.50	
		140	5700		-	-	14.50	
	802.11n HT20	100	5500	MCS0	-	-	14.50	
		116	5580		-	-	14.50	
		140	5700		-	-	14.50	
	802.11n HT40	102	5510	MCS0	-	-	14.50	
		110	5550		-	-	14.50	
		134	5670		-	-	14.50	
	802.11ac VHT20	100	5500	MCS0	-	-	14.50	
		116	5580		-	-	14.50	
		140	5700		-	-	14.50	
	802.11ac VHT40	102	5510	MCS0	-	-	14.50	
		110	5550		-	-	14.50	
		134	5670		-	-	14.50	
	802.11ac VHT80	106	5530	MCS0	-	-	14.50	
		122	5610		-	-	14.50	
	802.11ax HE20	100	5500	MCS0	-	-	14.50	
		116	5580		-	-	14.50	
		140	5700		-	-	14.50	
	802.11ax HE40	102	5510	MCS0	-	-	14.50	
		110	5550		-	-	14.50	
		134	5670		-	-	14.50	
	802.11ax HE80	106	5530	MCS8	13.39	13.74	17.00	16.58
		122	5610		11.79	11.87	15.00	14.84

Note:

- 1) The Average conducted power of WiFi 5.6G is measured with RMS detector.
- 2) The tested channel results are marks in bold.

5. Conducted power measurements of WiFi 5.8G

Band	Mode	Channel	Frequency (MHz)	Data Rate (Mbps)	Max. Tune up	Average Power(dBm)
5.8G_WiFi 1TX_ ANT 1	802.11a	149	5745	6	13.50	No Require
		157	5785		13.50	
		165	5825		13.50	
	802.11n HT20	149	5745	MCS0	13.50	
		157	5785		13.50	
		165	5825		13.50	
	802.11n HT40	151	5755	MCS0	13.50	
		159	5795		13.50	
	802.11ac VHT20	149	5745	MCS0	13.50	
		157	5785		13.50	
		165	5825		13.50	
	802.11ac VHT40	151	5755	MCS0	13.50	
		159	5795		13.50	
	802.11ac VHT80	155	5775	MCS0	13.50	
	802.11ax HE20	149	5745	MCS0	13.50	
		157	5785		13.50	
		165	5825		13.50	
	802.11ax HE40	151	5755	MCS0	14.00	13.74
		159	5795		14.50	14.39
	802.11ax HE80	155	5775	MCS0	13.50	No Require

Band	Mode	Channel	Frequency (MHz)	Data Rate (Mbps)	Max. Tune up	Average Power(dBm)
5.8G_WiFi 1TX_ ANT 2	802.11a	149	5745	6	12.50	No Require
		157	5785		12.50	
		165	5825		12.50	
	802.11n HT20	149	5745	MCS0	12.50	
		157	5785		12.50	
		165	5825		12.50	
	802.11n HT40	151	5755	MCS0	12.50	
		159	5795		12.50	
	802.11ac VHT20	149	5745	MCS0	13.00	12.65
		157	5785		14.00	13.97
		165	5825		14.50	14.17
	802.11ac VHT40	151	5755	MCS0	12.50	No Require
		159	5795		12.50	
	802.11ac VHT80	155	5775	MCS0	12.50	
	802.11ax HE20	149	5745	MCS0	12.50	
		157	5785		12.50	
		165	5825		12.50	
	802.11ax HE40	151	5755	MCS0	12.50	
		159	5795		12.50	
	802.11ax HE80	155	5775	MCS0	12.50	

Band	Mode	Channel	Frequency (MHz)	Data Rate (Mbps)	ANT 1 Average Power(dBm)	ANT 2 Average Power(dBm)	Max. Tune up	Total Average Power(dBm)
5.8G_WiFi_2TX_ANT 1+2	802.11a	149	5745	6	-	-	15.50	No Require
		157	5785		-	-	15.50	
		165	5825		-	-	15.50	
	802.11n HT20	149	5745	MCS0	-	-	15.50	
		157	5785		-	-	15.50	
		165	5825		-	-	15.50	
	802.11n HT40	151	5755	MCS0	-	-	15.50	
		159	5795		-	-	15.50	
	802.11ac VHT20	149	5745	MCS8	14.58	13.17	17.00	16.94
		157	5785		15.61	13.48	18.00	17.68
		165	5825		14.15	11.14	16.00	15.91
	802.11ac VHT40	151	5755	MCS0	-	-	15.50	No Require
		159	5795		-	-	15.50	
	802.11ac VHT80	155	5775	MCS0	-	-	15.50	
	802.11ax HE20	149	5745	MCS0	-	-	15.50	
		157	5785		-	-	15.50	
		165	5825		-	-	15.50	
	802.11ax HE40	151	5755	MCS0	-	-	15.50	
		159	5795		-	-	15.50	
	802.11ax HE80	155	5775	MCS0	-	-	15.50	

Note:

- 1) The Average conducted power of WiFi 5.8G is measured with RMS detector.
- 2) The tested channel results are marks in bold.

7.2 SAR TEST RESULTS

General Notes:

- 1) Per KDB447498 D04, all measurement SAR results are scaled to the maximum tune-up tolerance limit to demonstrate compliant.
- 2) Per KDB447498 D04, testing of other required channels within the operating mode of a frequency band is not required when the reported 1-g or 10-g SAR for the mid-band or highest output power channel is: ≤ 0.8 W/kg or 2.0 W/kg, for 1-g or 10-g respectively, when the transmission band is ≤ 100 MHz. When the maximum output power variation across the required test channels is $> \frac{1}{2}$ dB, instead of the middle channel, the highest output power channel must be used.
- 3) Per KDB865664 D01, for each frequency band, repeated SAR measurement is required only when the measured SAR is ≥ 0.8 W/kg; if the deviation among the repeated measurement is $\leq 20\%$, and the measured SAR < 1.45 W/kg, only one repeated measurement is required.
- 4) Per KDB941225 D06, the DUT Dimension is bigger than 9 cm x 5 cm, so 10mm is chosen as the test separation distance for Hotspot mode. When the antenna-to-edge distance is greater than 2.5cm, such position does not need to be tested.
- 5) Per KDB648474 D04, SAR is evaluated without a headset connected to the device. When the standalone reported body-worn SAR is ≤ 1.2 W/kg, no additional SAR evaluations using a headset are required.
- 6) Per KDB865664 D02, SAR plot is only required for the highest measured SAR in each exposure configuration, wireless mode and frequency band combination; Plots are also required when the measured SAR is > 1.5 W/kg, or > 7.0 W/kg for occupational exposure. The published RF exposure KDB procedures may require additional plots; for example, to support SAR to peak location separation ratio test exclusion and/or volume scan post-processing.

WLAN Notes:

1. For exposure conditions with multiple test positions, such as handset operating next to the ear, devices with hotspot mode, procedures for initial test position can be applied. Using the transmission mode determined by the DSSS procedure or initial test configuration, area scans are measured for all positions in an exposure condition. The test position with the highest extrapolated (peak) SAR is used as the initial test position. When the reported SAR of the initial test position is ≤ 0.4 W/kg, further SAR measurement is not required for the other (remaining) test positions. Otherwise, SAR is evaluated at the subsequent highest peak SAR position until the reported SAR result is ≤ 0.8 W/kg or all test positions are measured.
2. Justification for test configurations for WLAN per KDB Publication 248227 for 2.4GHz WIFI single transmission chain operations, the highest measured maximum output power Channel for DSSS was selected for SAR measurement. SAR for OFDM modes (2.4GHz 802.11g/n) was not required due to the maximum allowed powers and the highest reported DSSS SAR. See Section 7.1.4 for more information.
3. Justification for test configurations for WLAN per KDB Publication 248227 for 5GHz WIFI single transmission chain operations, the initial test configuration was selected according to the transmission mode with the highest maximum allowed power. Other transmission modes were not investigated since the highest reported SAR for initial test configuration adjusted by the ratio of maximum output powers is less than 1.2W/kg. See Section 6.1.4 for more information.

7.2.1 SAR MEASUREMENT RESULT

Separation distance: 5mm

1. SAR test results of WiFi 2.4G

Test No.	Band	Channel	Test Position	Ant	Ant Statu	Ant Angle	Data Rate	Maximum Tune-up (dBm)	Conducted Power (dBm)	Duty Cycle (%)	Power Drift (dB)	SAR 1g (W/kg)	SAR 10g (W/kg)	Reported 1g SAR (W/kg)
W1	802.11ax HE40	4	Front Face	1	Close	0	MCS0	13.50	13.42	99.38	0.14	0.876	0.419	0.898
W2	802.11ax HE40	4	Rear Face	1	Close	0	MCS0	13.50	13.42	99.38	0.09	0.795	0.384	0.815
W3	802.11ax HE40	4	Left Side	1	Close	0	MCS0	13.50	13.42	99.38	-0.07	1.040	0.502	1.066
W4	802.11ax HE40	4	Right Side	1	Close	0	MCS0	13.50	13.42	99.38	0.01	<0.001	<0.001	<0.001
W5	802.11ax HE40	4	Top Side 1	1	Close	0	MCS0	13.50	13.42	99.38	0.06	0.182	0.106	0.187
W6	802.11ax HE40	4	Top Side 2	1	Close	0	MCS0	13.50	13.42	99.38	-0.11	0.286	0.157	0.293
W7	802.11ax HE40	4	Left Side	1	Open	90	MCS0	13.50	13.42	99.38	-0.03	1.370	0.689	1.404
W8	802.11ax HE40	4	Left Side	1	Open	180	MCS0	13.50	13.42	99.38	-0.02	1.350	0.678	1.384
W9	802.11ax HE40	3	Left Side	1	Open	90	MCS0	13.50	13.31	99.38	-0.08	1.330	0.669	1.398
W10	802.11ax HE40	6	Left Side	1	Open	90	MCS0	13.50	13.24	99.38	-0.05	1.350	0.684	1.442
W11	802.11ax HE40	8	Left Side	1	Open	90	MCS0	11.00	10.72	99.38	0.17	0.813	0.475	0.873
W12	802.11ax HE40	9	Left Side	1	Open	90	MCS0	11.50	11.35	99.38	0.03	0.915	0.461	0.953
W14	802.11g	6	Front Face	2	Close	0	6M	14.00	13.63	99.38	-0.06	0.888	0.409	0.973
W15	802.11g	6	Rear Face	2	Close	0	6M	14.00	13.63	99.38	0.12	0.798	0.376	0.874
W16	802.11g	6	Left Side	2	Close	0	6M	14.00	13.63	99.38	0.17	<0.001	<0.001	<0.001
W17	802.11g	6	Right Side	2	Close	0	6M	14.00	13.63	99.38	0.01	1.040	0.511	1.140
W18	802.11g	6	Top Side 1	2	Close	0	6M	14.00	13.63	99.38	-0.06	0.180	0.099	0.197
W19	802.11g	6	Top Side 2	2	Close	0	6M	14.00	13.63	99.38	0.03	0.246	0.132	0.270
W20	802.11g	6	Right Side	2	Open	90	6M	14.00	13.63	99.38	0.08	1.320	0.672	1.446
W21	802.11g	6	Right Side	2	Open	180	6M	14.00	13.63	99.38	-0.01	1.360	0.688	1.490
W22	802.11g	1	Right Side	2	Open	180	6M	14.00	13.51	99.38	-0.14	1.210	0.610	1.363
W23	802.11g	2	Right Side	2	Open	180	6M	13.00	12.47	99.38	-0.08	1.230	0.618	1.398
W24	802.11g	10	Right Side	2	Open	180	6M	13.50	13.44	99.38	-0.15	1.340	0.674	1.367
W25	802.11g	11	Right Side	2	Open	180	6M	12.50	12.39	99.38	-0.1	1.250	0.626	1.290
W27	802.11b	2	Front Face	1+2	Close	0	1M	16.50	16.03	99.38	0.12	0.704	0.334	0.789
W28	802.11b	2	Rear Face	1+2	Close	0	1M	16.50	16.03	99.38	0.06	0.662	0.319	0.742
W29	802.11b	2	Left Side	1+2	Close	0	1M	16.50	16.03	99.38	0.01	1.130	0.532	1.267
W30	802.11b	2	Right Side	1+2	Close	0	1M	16.50	16.03	99.38	0.04	1.020	0.503	1.144
W31	802.11b	2	Top Side 1	1+2	Close	0	1M	16.50	16.03	99.38	-0.09	0.211	0.117	0.237
W32	802.11b	2	Top Side 2	1+2	Close	0	1M	16.50	16.03	99.38	0.07	0.165	0.095	0.185
W33	802.11b	2	Left Side	1+2	Open	90	1M	16.50	16.03	99.38	-0.13	1.280	0.644	1.435
W34	802.11b	2	Left Side	1+2	Open	180	1M	16.50	16.03	99.38	0.05	1.180	0.573	1.323
W35	802.11b	1	Left Side	1+2	Open	90	1M	16.00	15.96	99.38	-0.08	1.400	0.711	1.422
W36	802.11b	6	Left Side	1+2	Open	90	1M	15.50	15.28	99.38	0	1.330	0.671	1.409
W37	802.11b	10	Left Side	1+2	Open	90	1M	15.50	15.40	99.38	-0.07	1.410	0.707	1.453
W38	802.11b	11	Left Side	1+2	Open	90	1M	16.00	15.63	99.38	-0.19	1.350	0.679	1.480

Note: The value with boldface is the maximum SAR Value of each test band.

2. SAR test results of WiFi 5G

Test No.	Band	Channel	Test Position	Ant	Ant Statu	Ant Angle	Data Rate	Maximum Tune-up (dBm)	Conducted Power (dBm)	Duty Cycle (%)	Power Drift (dB)	SAR 1g (W/kg)	SAR 10g (W/kg)	Reported 1g SAR (W/kg)
W40	802.11ax HE20	36	Front Face	1	Close	0	MCS0	14.50	14.06	98.95	0.06	0.570	0.183	0.637
W41	802.11ax HE20	36	Rear Face	1	Close	0	MCS0	14.50	14.06	98.95	0.01	0.737	0.220	0.824
W42	802.11ax HE20	36	Left Side	1	Close	0	MCS0	14.50	14.06	98.95	-0.02	1.190	0.398	1.331
W43	802.11ax HE20	36	Right Side	1	Close	0	MCS0	14.50	14.06	98.95	0.11	0.051	0.021	0.056
W44	802.11ax HE20	36	Top Side 1	1	Close	0	MCS0	14.50	14.06	98.95	0.04	0.111	0.051	0.124
W45	802.11ax HE20	36	Top Side 2	1	Close	0	MCS0	14.50	14.06	98.95	-0.03	0.085	0.038	0.095
W46	802.11ax HE20	36	Left Side	1	Open	90	MCS0	14.50	14.06	98.95	0.18	0.737	0.246	0.824
W47	802.11ax HE20	36	Left Side	1	Open	180	MCS0	14.50	14.06	98.95	0.03	0.672	0.226	0.752
W48	802.11ax HE20	40	Left Side	1	Close	0	MCS0	12.00	11.91	98.95	-0.07	1.230	0.393	1.269
W49	802.11ax HE20	48	Left Side	1	Close	0	MCS0	14.00	13.93	98.95	-0.02	1.040	0.332	1.068
W51	802.11ac VHT20	40	Front Face	2	Close	0	MCS0	16.50	16.45	98.95	0.09	0.921	0.269	0.942
W52	802.11ac VHT20	40	Rear Face	2	Close	0	MCS0	16.50	16.45	98.95	0.03	0.796	0.242	0.814
W53	802.11ac VHT20	40	Left Side	2	Close	0	MCS0	16.50	16.45	98.95	-0.05	0.047	0.019	0.048
W54	802.11ac VHT20	40	Right Side	2	Close	0	MCS0	16.50	16.45	98.95	-0.02	1.340	0.430	1.370
W55	802.11ac VHT20	40	Top Side 1	2	Close	0	MCS0	16.50	16.45	98.95	0.14	0.177	0.075	0.181
W56	802.11ac VHT20	40	Top Side 2	2	Close	0	MCS0	16.50	16.45	98.95	0.01	0.196	0.082	0.200
W57	802.11ac VHT20	40	Right Side	2	Open	90	MCS0	16.50	16.45	98.95	0.16	0.870	0.299	0.889
W58	802.11ac VHT20	40	Right Side	2	Open	180	MCS0	16.50	16.45	98.95	0.04	0.904	0.287	0.924
W59	802.11ac VHT20	36	Right Side	2	Close	0	MCS0	15.00	14.78	98.95	-0.09	1.210	0.388	1.286
W60	802.11ac VHT20	48	Right Side	2	Close	0	MCS0	15.50	15.28	98.95	-0.05	1.230	0.393	1.308
W62	802.11ac VHT20	36	Front Face	1+2	Close	0	MCS8	20.00	19.89	98.95	0.06	0.770	0.251	0.798
W63	802.11ac VHT20	36	Rear Face	1+2	Close	0	MCS8	20.00	19.89	98.95	0.01	0.807	0.268	0.836
W64	802.11ac VHT20	36	Left Side	1+2	Close	0	MCS8	20.00	19.89	98.95	0.09	1.400	0.476	1.450
W65	802.11ac VHT20	36	Right Side	1+2	Close	0	MCS8	20.00	19.89	98.95	-0.01	0.996	0.324	1.032
W66	802.11ac VHT20	36	Top Side 1	1+2	Close	0	MCS8	20.00	19.89	98.95	0.15	0.183	0.081	0.190
W67	802.11ac VHT20	36	Top Side 2	1+2	Close	0	MCS8	20.00	19.89	98.95	0.08	0.214	0.073	0.222
W68	802.11ac VHT20	36	Left Side	1+2	Open	90	MCS8	20.00	19.89	98.95	-0.11	0.800	0.304	0.829
W69	802.11ac VHT20	36	Left Side	1+2	Open	180	MCS8	20.00	19.89	98.95	0.02	0.645	0.244	0.668
W70	802.11ac VHT20	48	Left Side	1+2	Close	0	MCS8	17.00	16.78	98.95	-0.07	1.410	0.435	1.498
W71	802.11ac VHT20	40	Left Side	1+2	Close	0	MCS8	16.00	15.91	98.95	-0.05	1.120	0.361	1.155

Test No.	Band	Channel	Test Position	Ant	Ant Statu	Ant Angle	Data Rate	Maximum Tune-up (dBm)	Conducted Power (dBm)	Duty Cycle (%)	Power Drift (dB)	SAR 1g (W/kg)	SAR 10g (W/kg)	Reported 1g SAR (W/kg)
W73	802.11ac VHT40	62	Front Face	1	Close	0	MCS0	13.00	12.54	98.95	0.02	0.624	0.192	0.701
W74	802.11ac VHT40	62	Rear Face	1	Close	0	MCS0	13.00	12.54	98.95	0.15	0.868	0.251	0.975
W75	802.11ac VHT40	62	Left Side	1	Close	0	MCS0	13.00	12.54	98.95	-0.08	1.130	0.353	1.270
W76	802.11ac VHT40	62	Right Side	1	Close	0	MCS0	13.00	12.54	98.95	-0.03	0.031	0.009	0.034
W77	802.11ac VHT40	62	Top Side 1	1	Close	0	MCS0	13.00	12.54	98.95	0.05	0.118	0.048	0.133
W78	802.11ac VHT40	62	Top Side 2	1	Close	0	MCS0	13.00	12.54	98.95	0.17	0.098	0.045	0.110
W79	802.11ac VHT40	62	Left Side	1	Open	90	MCS0	13.00	12.54	98.95	0.01	0.719	0.228	0.808
W80	802.11ac VHT40	62	Left Side	1	Open	180	MCS0	13.00	12.54	98.95	0.09	0.605	0.185	0.680
W81	802.11ac VHT40	54	Left Side	1	Close	0	MCS0	12.50	12.35	98.95	-0.05	1.340	0.426	1.402
W83	802.11ax HE40	62	Front Face	2	Close	0	MCS0	17.00	16.95	98.95	0.09	0.998	0.287	1.020
W84	802.11ax HE40	62	Rear Face	2	Close	0	MCS0	17.00	16.95	98.95	0.01	0.973	0.271	0.995
W85	802.11ax HE40	62	Left Side	2	Close	0	MCS0	17.00	16.95	98.95	-0.04	0.035	0.014	0.036
W86	802.11ax HE40	62	Right Side	2	Close	0	MCS0	17.00	16.95	98.95	-0.17	1.240	0.382	1.268
W87	802.11ax HE40	62	Top Side 1	2	Close	0	MCS0	17.00	16.95	98.95	0.06	0.198	0.074	0.202
W88	802.11ax HE40	62	Top Side 2	2	Close	0	MCS0	17.00	16.95	98.95	0.11	0.131	0.054	0.134
W89	802.11ax HE40	62	Right Side	2	Open	90	MCS0	17.00	16.95	98.95	0.03	1.090	0.313	1.114
W90	802.11ax HE40	62	Right Side	2	Open	180	MCS0	17.00	16.95	98.95	-0.05	0.811	0.260	0.829
W91	802.11ax HE40	54	Right Side	2	Close	0	MCS0	15.00	14.86	98.95	0	1.220	0.388	1.273
W93	802.11ac VHT40	62	Front Face	1+2	Close	0	MCS8	15.00	14.93	98.95	0.06	1.020	0.325	1.047
W94	802.11ac VHT40	62	Rear Face	1+2	Close	0	MCS8	15.00	14.93	98.95	0.03	0.886	0.297	0.910
W95	802.11ac VHT40	62	Left Side	1+2	Close	0	MCS8	15.00	14.93	98.95	0.1	1.290	0.414	1.324
W96	802.11ac VHT40	62	Right Side	1+2	Close	0	MCS8	15.00	14.93	98.95	0.04	1.340	0.432	1.376
W97	802.11ac VHT40	62	Top Side 1	1+2	Close	0	MCS8	15.00	14.93	98.95	0.15	0.250	0.106	0.257
W98	802.11ac VHT40	62	Top Side 2	1+2	Close	0	MCS8	15.00	14.93	98.95	-0.02	0.242	0.105	0.248
W99	802.11ac VHT40	62	Right Side	1+2	Open	90	MCS8	15.00	14.93	98.95	0.09	1.040	0.303	1.068
W100	802.11ac VHT40	62	Right Side	1+2	Open	180	MCS8	15.00	14.93	98.95	0.01	0.729	0.252	0.748
W101	802.11ac VHT40	54	Right Side	1+2	Close	0	MCS8	15.00	14.66	98.95	-0.07	0.922	0.301	1.007

Test No.	Band	Channel	Test Position	Ant	Ant Statu	Ant Angle	Data Rate	Maximum Tune-up (dBm)	Conducted Power (dBm)	Duty Cycle (%)	Power Drift (dB)	SAR 1g (W/kg)	SAR 10g (W/kg)	Reported 1g SAR (W/kg)
W103	802.11ax HE80	122	Front Face	1	Close	0	MCS0	14.00	13.89	98.95	0.02	1.030	0.303	1.068
W104	802.11ax HE80	122	Rear Face	1	Close	0	MCS0	14.00	13.89	98.95	0.08	1.130	0.351	1.171
W105	802.11ax HE80	122	Left Side	1	Close	0	MCS0	14.00	13.89	98.95	-0.12	1.300	0.400	1.347
W106	802.11ax HE80	122	Right Side	1	Close	0	MCS0	14.00	13.89	98.95	0.01	0.079	0.026	0.082
W107	802.11ax HE80	122	Top Side 1	1	Close	0	MCS0	14.00	13.89	98.95	-0.09	0.329	0.130	0.341
W108	802.11ax HE80	122	Top Side 2	1	Close	0	MCS0	14.00	13.89	98.95	0.11	0.281	0.126	0.291
W109	802.11ax HE80	122	Left Side	1	Open	90	MCS0	14.00	13.89	98.95	0.04	1.060	0.341	1.099
W110	802.11ax HE80	122	Left Side	1	Open	180	MCS0	14.00	13.89	98.95	0.17	0.970	0.307	1.005
W111	802.11ax HE80	106	Left Side	1	Close	0	MCS0	14.00	13.52	98.95	-0.05	1.230	0.380	1.388
W113	802.11ax HE40	102	Front Face	2	Close	0	MCS0	14.50	14.27	98.95	0.01	0.962	0.294	1.025
W114	802.11ax HE40	102	Rear Face	2	Close	0	MCS0	14.50	14.27	98.95	0.14	0.880	0.263	0.938
W115	802.11ax HE40	102	Left Side	2	Close	0	MCS0	14.50	14.27	98.95	-0.07	0.037	0.014	0.039
W116	802.11ax HE40	102	Right Side	2	Close	0	MCS0	14.50	14.27	98.95	0.08	1.330	0.419	1.417
W117	802.11ax HE40	102	Top Side 1	2	Close	0	MCS0	14.50	14.27	98.95	0.03	0.251	0.114	0.267
W118	802.11ax HE40	102	Top Side 2	2	Close	0	MCS0	14.50	14.27	98.95	-0.11	0.128	0.058	0.136
W119	802.11ax HE40	102	Right Side	2	Open	90	MCS0	14.50	14.27	98.95	0.06	1.080	0.351	1.151
W120	802.11ax HE40	102	Right Side	2	Open	180	MCS0	14.50	14.27	98.95	-0.09	0.940	0.321	1.002
W121	802.11ax HE40	110	Right Side	2	Close	0	MCS0	14.00	13.72	98.95	0.02	1.270	0.380	1.369
W122	802.11ax HE40	134	Right Side	2	Close	0	MCS0	13.50	13.45	98.95	-0.02	1.260	0.372	1.288
W124	802.11ax HE80	106	Front Face	1+2	Close	0	MCS8	17.00	16.58	98.95	0.09	1.010	0.271	1.124
W125	802.11ax HE80	106	Rear Face	1+2	Close	0	MCS8	17.00	16.58	98.95	0.12	0.799	0.271	0.889
W126	802.11ax HE80	106	Left Side	1+2	Close	0	MCS8	17.00	16.58	98.95	-0.05	1.230	0.378	1.369
W127	802.11ax HE80	106	Right Side	1+2	Close	0	MCS8	17.00	16.58	98.95	-0.03	1.110	0.382	1.236
W128	802.11ax HE80	106	Top Side 1	1+2	Close	0	MCS8	17.00	16.58	98.95	0.14	0.379	0.159	0.422
W129	802.11ax HE80	106	Top Side 2	1+2	Close	0	MCS8	17.00	16.58	98.95	0.01	0.326	0.141	0.363
W130	802.11ax HE80	106	Left Side	1+2	Open	90	MCS8	17.00	16.58	98.95	0.07	0.590	0.201	0.657
W131	802.11ax HE80	106	Left Side	1+2	Open	180	MCS8	17.00	16.58	98.95	0.12	0.698	0.206	0.777
W132	802.11ax HE80	122	Left Side	1+2	Close	0	MCS8	15.00	14.84	98.95	-0.06	1.290	0.380	1.352

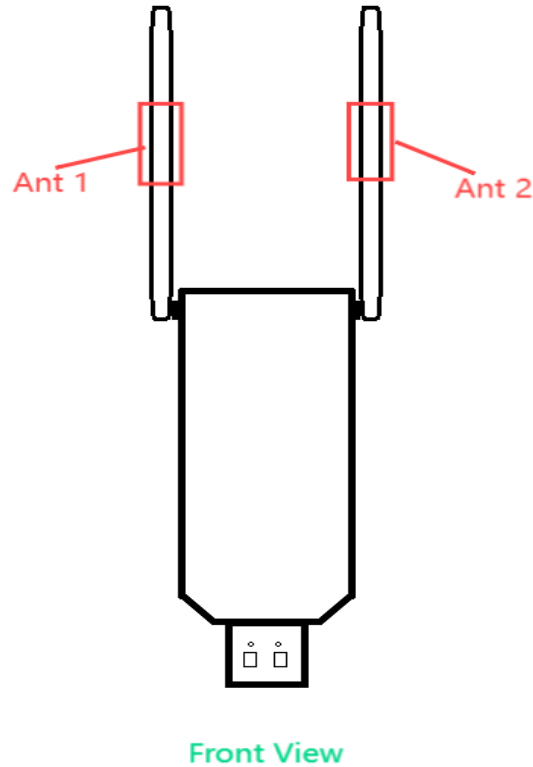
Test No.	Band	Channel	Test Position	Ant	Ant Statu	Ant Angle	Data Rate	Maximum Tune-up (dBm)	Conducted Power (dBm)	Duty Cycle (%)	Power Drift (dB)	SAR 1g (W/kg)	SAR 10g (W/kg)	Reported 1g SAR (W/kg)
W134	802.11ax HE40	159	Front Face	1	Close	0	MCS0	14.50	14.39	98.95	0.01	0.756	0.240	0.784
W135	802.11ax HE40	159	Rear Face	1	Close	0	MCS0	14.50	14.39	98.95	0.09	0.791	0.250	0.820
W136	802.11ax HE40	159	Left Side	1	Close	0	MCS0	14.50	14.39	98.95	-0.03	1.250	0.378	1.296
W137	802.11ax HE40	159	Right Side	1	Close	0	MCS0	14.50	14.39	98.95	0.16	0.049	0.014	0.050
W138	802.11ax HE40	159	Top Side 1	1	Close	0	MCS0	14.50	14.39	98.95	0.01	0.223	0.095	0.231
W139	802.11ax HE40	159	Top Side 2	1	Close	0	MCS0	14.50	14.39	98.95	-0.07	0.212	0.097	0.220
W140	802.11ax HE40	159	Left Side	1	Open	90	MCS0	14.50	14.39	98.95	0.03	0.847	0.267	0.878
W141	802.11ax HE40	159	Left Side	1	Open	180	MCS0	14.50	14.39	98.95	0.12	0.896	0.265	0.929
W142	802.11ax HE40	151	Left Side	1	Close	0	MCS0	14.00	13.74	98.95	-0.05	1.230	0.357	1.320
W144	802.11ac VHT20	165	Front Face	2	Close	0	MCS0	14.50	14.17	98.95	0.13	1.130	0.334	1.232
W145	802.11ac VHT20	165	Rear Face	2	Close	0	MCS0	14.50	14.17	98.95	0.09	0.879	0.264	0.958
W146	802.11ac VHT20	165	Left Side	2	Close	0	MCS0	14.50	14.17	98.95	-0.02	0.028	0.009	0.031
W147	802.11ac VHT20	165	Right Side	2	Close	0	MCS0	14.50	14.17	98.95	0.07	1.250	0.399	1.363
W148	802.11ac VHT20	165	Top Side 1	2	Close	0	MCS0	14.50	14.17	98.95	0.01	0.170	0.073	0.185
W149	802.11ac VHT20	165	Top Side 2	2	Close	0	MCS0	14.50	14.17	98.95	0.04	0.188	0.086	0.205
W150	802.11ac VHT20	165	Right Side	2	Open	90	MCS0	14.50	14.17	98.95	0.11	1.040	0.314	1.134
W151	802.11ac VHT20	165	Right Side	2	Open	180	MCS0	14.50	14.17	98.95	0.02	1.020	0.301	1.112
W152	802.11ac VHT20	149	Right Side	2	Close	0	MCS0	13.00	12.65	98.95	-0.04	1.210	0.369	1.325
W153	802.11ac VHT20	157	Right Side	2	Close	0	MCS0	14.00	13.97	98.95	0.05	1.280	0.383	1.303
W155	802.11ac VHT20	157	Front Face	1+2	Close	0	MCS8	18.00	17.68	98.95	0.06	0.506	0.155	0.550
W156	802.11ac VHT20	157	Rear Face	1+2	Close	0	MCS8	18.00	17.68	98.95	0.11	0.710	0.207	0.772
W157	802.11ac VHT20	157	Left Side	1+2	Close	0	MCS8	18.00	17.68	98.95	-0.02	1.250	0.381	1.358
W158	802.11ac VHT20	157	Right Side	1+2	Close	0	MCS8	18.00	17.68	98.95	0.05	1.150	0.321	1.250
W159	802.11ac VHT20	157	Top Side 1	1+2	Close	0	MCS8	18.00	17.68	98.95	-0.09	0.163	0.063	0.177
W160	802.11ac VHT20	157	Top Side 2	1+2	Close	0	MCS8	18.00	17.68	98.95	0.03	0.185	0.080	0.201
W161	802.11ac VHT20	157	Left Side	1+2	Open	90	MCS8	18.00	17.68	98.95	0.01	1.010	0.323	1.098
W162	802.11ac VHT20	157	Left Side	1+2	Open	180	MCS8	18.00	17.68	98.95	-0.17	0.916	0.270	0.995
W163	802.11ac VHT20	149	Left Side	1+2	Close	0	MCS8	17.00	16.94	98.95	0.03	1.270	0.386	1.301
W164	802.11ac VHT20	165	Left Side	1+2	Close	0	MCS8	16.00	15.91	98.95	-0.05	1.430	0.462	1.475

Note: The value with boldface is the maximum SAR Value of each test band.

8 MULTIPLE TRANSMITTER EVALUATION

The following tables list information which is relevant for the decision if a simultaneous transmit evaluation is necessary according to FCC KDB 447498 D04 Interim General RF Exposure Guidance v01.

The location of the antennas inside the EUT is shown as below:

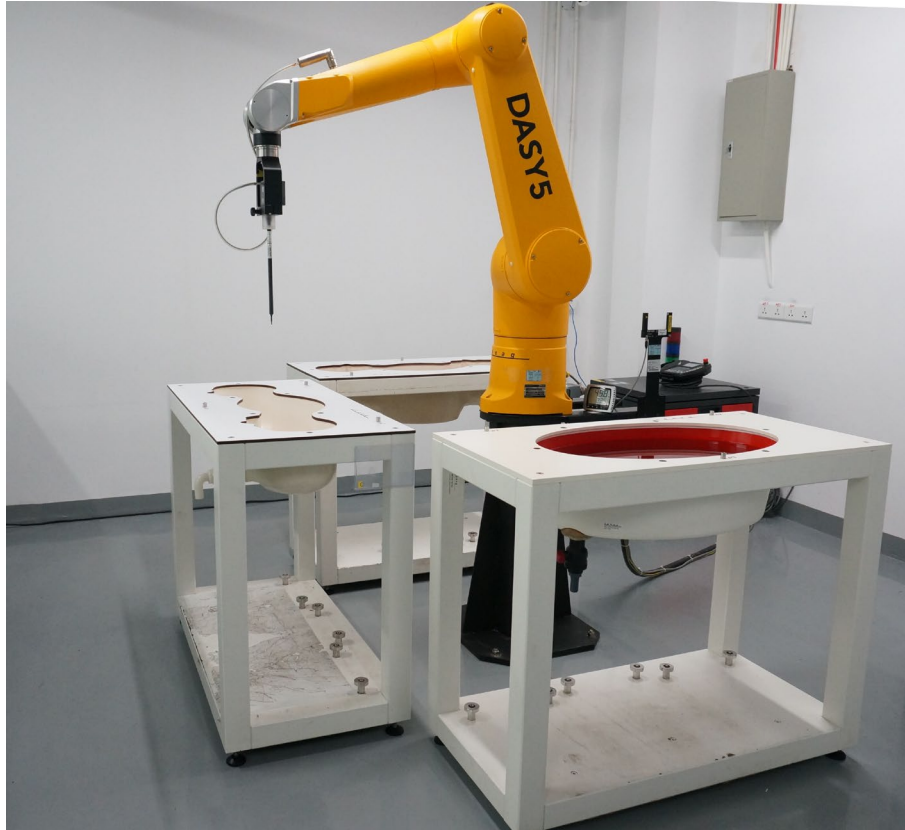


Note: The results of transmit simultaneous please refer to section 7.2.1.

APPENDIX

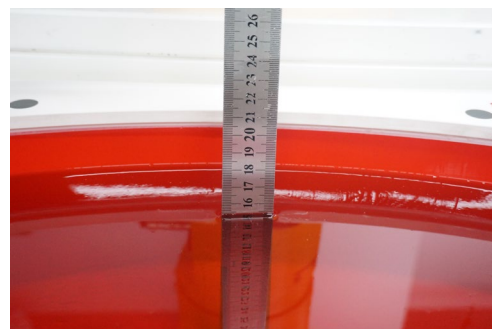
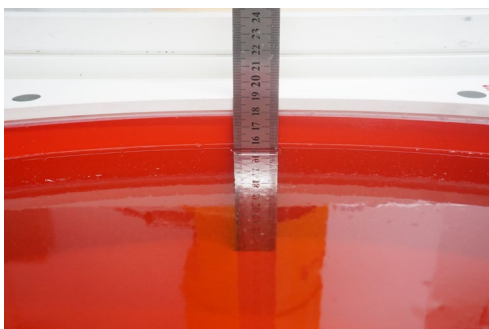
1. TEST LAYOUT

Specific Absorption Rate Test Layout



Liquid depth in the flat Phantom ($\geq 15\text{cm}$ depth)

HSL_2300MHz-2700MHz_Body_15.6cm HSL_5000MHz-6000MHz_Body_15.4cm



Appendix A. SAR Plots of System Verification

(Pls See BTL-FCC SAR-1-2408G116_Appendix A.)

Appendix B. SAR Plots of SAR Measurement

(Pls See BTL-FCC SAR-1-2408G116_Appendix B.)

Appendix C. Calibration Certificate

(Pls See BTL-FCC SAR-1-2408G116_Appendix C.)

Appendix D. Photographs of the Test Set-Up

(Pls See BTL-FCC SAR-1-2408G116_Appendix D.)

End of Test Report