



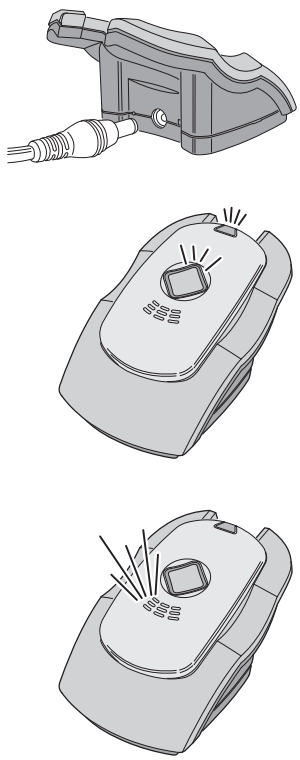
User Guide



Activation and Set Up

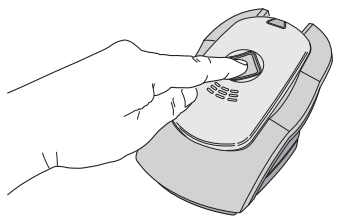
Step 1: Activate Libris

1. Plug the small round end of the Power Cord into the Power Port located in the back of the Smart Cradle. Plug the large end of the Power Cord into a **non-switched** standard wall outlet (an outlet not controlled by a wall switch).
2. Place Libris into the Smart Cradle. While charging, the Cellular and Battery Indicators will be on and show your current cellular signal strength and level of battery charge.
3. Libris will automatically turn on when placed in the Smart Cradle and will play a short start up tone, followed by a message indicating it is ready for its first use: "We are activating your personal mobile responder. We will notify you when activation is complete." Libris will automatically receive any updates and, once activated on the cellular network, will say: "Activation is now complete. We are resetting your personal mobile responder so it is ready for your use. One moment please." Allow up to a minute for Libris to restart.
4. Libris will then play a message: "This personal mobile responder will notify your response team when it detects a fall. With one touch of the call button your response team will be available to assist you and will pinpoint your location so help can reach you."



Step 2: Call to Complete Set Up

1. To register your personal mobile responder with your response team, Libris will say: "It's time to meet your response team. Please press and hold the Call Button down to connect to your response team now."
2. With Libris in the Smart Cradle, press and hold the Call Button until Libris initiates the call. Libris can remain in the Smart Cradle during the call to your response team.
3. Listen for the audio message: "Calling your response team now."
4. When you complete the call with your response team, Libris will be set up.
Important: Libris is not ready for use until you have completed the set up call with your response team and, following that call, have charged Libris in the Smart Cradle for 4 hours.
Note: If Libris does not power on and begin the activation process or cannot detect a cellular network, call your customer service number.



Welcome

Thank you for choosing Numera Libris.
This user guide provides key information about Libris, including Important Safety Information. Please review it carefully and keep it nearby for reference. If you have questions that are not addressed in the user guide, please call your customer service number.
Libris is also available with telehealth functionality, providing safety and mobile health monitoring in one device. Your response team can provide more information.

Some features and audio prompts described in this User Guide may not apply to your device. Device settings vary by response team.

About Libris

Libris, a personal mobile responder, is cellular-enabled and designed to provide you personal emergency response services whether you are at home, away from home, and even in the shower or bath.

Libris can be activated by:

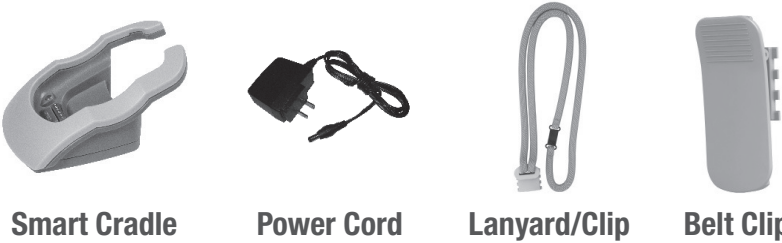
- Pressing the Libris Call Button.
- Detecting a fall while wearing the Libris (if this option is enabled).
- Triggering an optional Pendant Calling Device locally in your home while the Libris is charging in its Smart Cradle.

When activated, Libris will automatically call and allow you to speak with your response team and provide information about your location. Your response team can then notify emergency services for you, if needed.

Calling Devices

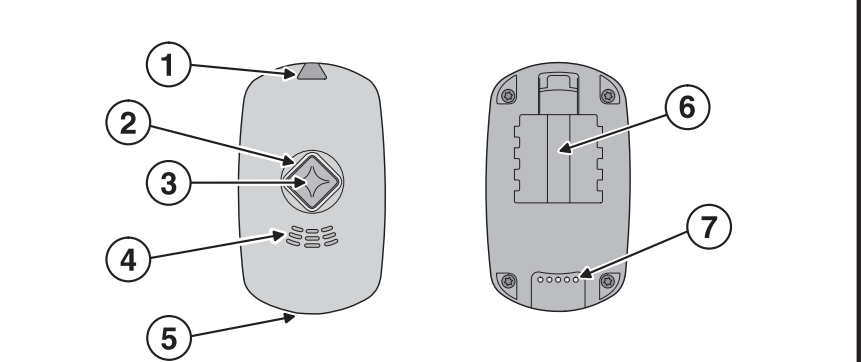


Accessories



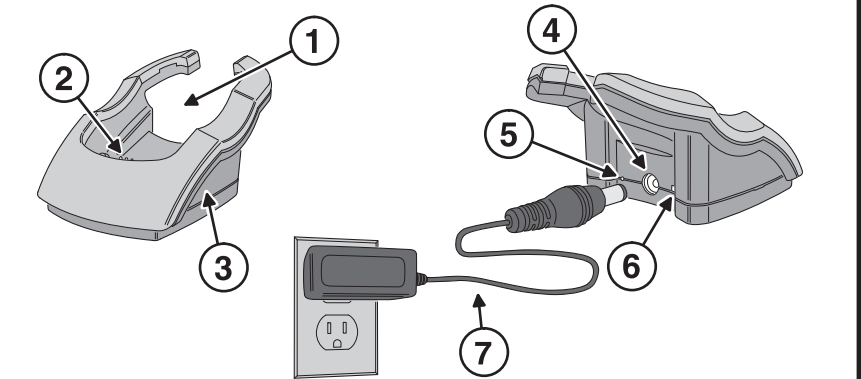
Important Safety Information

- FOR PROPER OPERATION, LIBRIS REQUIRES ADEQUATE CELLULAR COVERAGE. POOR CELLULAR COVERAGE MAY RESULT IN THE INABILITY TO PLACE A CALL OR AUTOMATICALLY DETECT A FALL. Check with your customer service team for known coverage limitations.**
- As with all location-based services, it may not always be possible to determine your location. Multi-level buildings, parking garages, and even dense urban areas can make it difficult for satellites and cell phone towers to determine your exact location.**
- In an emergency, please provide your response team with as much information as possible about your location.**
- Libris is not a replacement for regular contact with caregivers or access to an alternative means of placing an emergency call.**
- While the fall detection system performs well, no such system is 100% reliable. If you experience a fall that causes actual or potential injury, do not wait for the automatic call. You should always press the Call Button manually in an emergency if you are able.**
- Libris requires adequate battery charge for proper operation. Low battery may result in the inability to place a call, automatically detect a fall, and/or properly locate you automatically during an emergency.**
- Libris is designed to be highly water-resistant, not waterproof. Usage other than as directed may result in the inability to place a call, automatically detect a fall, and/or properly locate you automatically during an emergency.**
- Use only the Numera-provided Smart Cradle and Power Cord. Keep the Smart Cradle and Power Cord in good condition and located where they do not pose a safety hazard.**
- Use only the Numera-provided Lanyard. To reduce risk of strangulation, the Libris Lanyard is designed to break apart under certain conditions. Any cord worn around the neck, however, can pose a risk of strangulation, including the possibility of serious injury and death. Libris users and caregivers should exercise care with the Lanyard to ensure it does not get caught or tangled in wheelchairs, walkers and other such equipment.**
- Do not modify or dismantle Libris at any time, as this will void the warranty. The battery in Libris is not designed to be removed or replaced. There is a risk of explosion if the battery is tampered with, replaced with an incorrect type or manipulated in any way.**
- Hold Libris a minimum of 1 inch away from your body with the microphone near your mouth to complete an emergency call.**
- Test this System weekly. It is strongly recommended that you test this equipment at least weekly to ensure the System is working properly.**
- Each user in the household must have their own Libris and Smart Cradle. An optional Pendant Calling Device may not place an emergency call for you if another user's Libris is in your Smart Cradle.**
- In case there is more than one subscriber in a household, contact your customer service for details on operation in a multi-subscriber environment. All Libris users in a single household must use the same service provider.**
- An optional Pendant Calling Device cannot place an emergency call if the Smart Cradle has not been programmed to recognize the optional Pendant Calling Device.**



Libris Overview

1. Cellular Indicator shows cellular signal strength
2. Battery Indicator, which surrounds the Call Button, shows battery status
3. Call Button, when pushed, initiates a two-way call to your response team
4. Speaker allows you to hear your response team
5. Microphone allows response team to hear you
6. Clip Lock enables you to affix a Lanyard/Clip or Belt Clip
7. Charging Pins connect Libris to the Smart Cradle (be sure to keep these clean)



Smart Cradle Overview

1. Smart Cradle is for holding Libris while charging or when using optional Pendant Calling Devices
2. Charging Pins connect Smart Cradle to the Libris (be sure to keep these clean)
3. Internal UHF radio receiver is for local monitoring of optional Pendant Calling Devices
4. Power Port is where the low voltage barrel connector of the Power Cord connects to the Smart Cradle
5. Program Indicator, lights red while pairing optional Pendant Calling Devices
6. Program Button is used the pair optional Pendant Calling Devices to the Smart Cradle
7. Power Cord connects the Smart Cradle's Power Port to a standard wall outlet

Battery Indicator

The Battery Indicator, which surrounds the Call Button, shows the level of battery charge.

- When the Battery Indicator is green, Libris is adequately charged.
- When the Battery Indicator is amber, Libris is moderately charged.
- When the Battery Indicator is red, the battery charge is low, Consider charging soon.

Battery Indicator	Status*	Action Required
Green	Good	Ready for use
Amber	Moderate	No action needed
Red	Low	Charge soon

*The Libris battery is designed to operate on a single charge for 36 hours but may be reduced as a result of user activity, cellular coverage, talk time, device-specific settings, and device life.

Important: Libris requires an adequate battery charge to function properly. Prior to use, please charge Libris at least 4 hours. We recommend charging the device each night.

Cellular Indicator

The Cellular Indicator on top of Libris shows cellular signal strength.

- When the Cellular Indicator is green, Libris has a strong signal.
- When the Cellular Indicator is amber, Libris has a moderate signal.
- When the Cellular Indicator is red, Libris has no signal. Move to an area where you get a cellular signal. Libris will not function properly without an adequate cellular signal.

Cellular Indicator	Strength*
Green	Strong
Amber	Moderate
Red	No signal

*A cellular signal may not be available in all areas.

Indicator Light Settings

The cellular and battery indicator light settings may be configured by your response team to flash at a regular interval or activate by quickly pressing the Call Button.

Sleep Mode

Any time Libris is placed in the Smart Cradle, it will enter Sleep Mode cycles for approximately one hour. During this time, the cellular signal strength indicator light will turn off or flash red. Libris will automatically exit Sleep Mode if the Call Button is pressed, the device is removed from the Smart Cradle, or it is between Sleep Mode cycles.

Important: Libris requires an adequate cellular signal to function properly. Check with your customer service team for known coverage limitations.

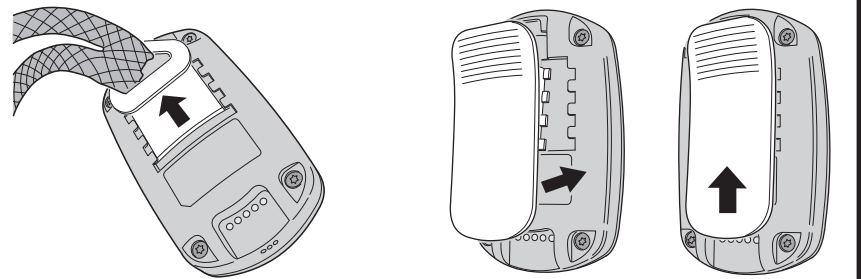
Wearing Libris

Libris can be worn on a belt using the Belt Clip, or as a pendant around your neck using the Lanyard/Clip. If worn with the Lanyard, Libris should be worn under clothing to prevent excess movement of the device.

Important: Libris requires a vertical position with the Call Button facing away from the body to operate properly.

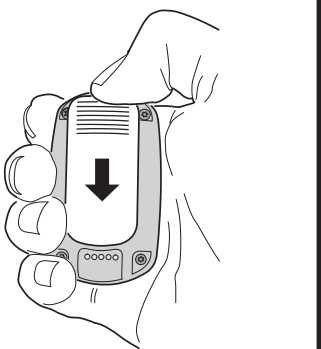
Attaching Belt Clip or Lanyard/Clip

1. Align the notched side of the Clip with the notched area on the back.
2. Press inward until the Clip notches are nested within the Libris notches.
3. Firmly push the Clip toward the top of the device. It is secure when you hear a click or you can no longer see the notches on the Clip.



Removing the Clip

1. Hold Libris in your hand as shown, with the Call Button facing the palm of your hand.
2. Forcefully push downward on the Clip with your thumb.



Turning On and Off

To turn Libris on, press the Call Button and hold it until the Battery Indicator flashes. Libris will play music while it starts up. Once connected, Libris will play a message: "Your personal mobile responder is ready."

Placing Libris into the Smart Cradle will turn it on automatically. Start-up audio prompts are silenced while this function is carried out in the Smart Cradle.

To turn Libris off, press the Call Button twice, holding down the second press for 7 seconds until Libris plays a message announcing that you have requested to turn it off. It will ask you to confirm by pressing the Call Button one more time. If done correctly, Libris will play the following message: "Powering off now. Good bye."

Note: When you first receive Libris, leave it in the Smart Cradle for 4 hours.

