

REXING®

CPDuo-9

User Manual

The information in this manual is subject to change without notice.

www.rexingusa.com

REV02282025




Overview

Thank you for choosing **REXING!**

We hope you love your new products as much as we do. If you need assistance, or have any suggestions to improve it, please contact us.

 **care@rexingusa.com**

 **(877) 740-8004**

Our support team will respond to you as soon as possible.

Always a surprise with Rexing

Check us out here.

- <https://www.facebook.com/rexingusa/>
- <https://www.instagram.com/rexingdashcam/>
- <https://www.rexingusa.com/support/registration/>

 Facebook



 Instagram



 Site



 Product Support



Activate Your

18-Month Warranty

& Choose Your

Free Gift!

Activate within 30 days of purchase to claim your free gift and extended limited 12-month warranty to 18 months.

**Scan the QR to Activate &
Select Your Free Gift**



<https://www.rexingusa.com/productreg/>

Table of Contents

What's in the box?	4
---------------------------	----------

Product Overview	5
-------------------------	----------

User Interface	6
----------------	---

Installation	7
--------------	---

CarPlay	11
---------	----

Android Auto	14
--------------	----

AirPlay	17
---------	----

Android Cast	19
--------------	----

BT Music	21
----------	----

Wi-Fi Video	22
-------------	----

Dash Cam	24
----------	----

Locked Files	25
--------------	----

Audio output	26
--------------	----

Playback	29
----------	----

Device Settings	31
-----------------	----

Screen Brightness	36
-------------------	----

Split screen mode	37
-------------------	----

Reverse Parking Assistance	39
----------------------------	----

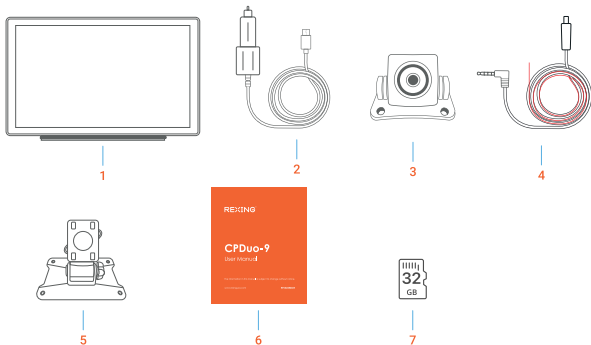
Parking Monitor	40
-----------------	----

Troubleshooting	42
-----------------	----

Product specifications	44
-------------------------------	-----------

Warranty and Support	47
-----------------------------	-----------

What's in the box?



1. Device

9 inch high-definition display / touch control
/ Bluetooth / WIFI / Audio Output / Type C
interface power supply

2. Power Cable

Type C power cable / 12V-24V / 3A current
/ integrated line / cigarette lighter

3. Rear Camera

4. Rear Camera Cable

5. Dashboard Mount

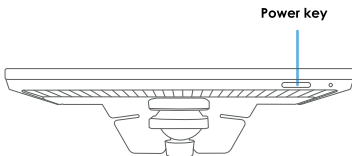
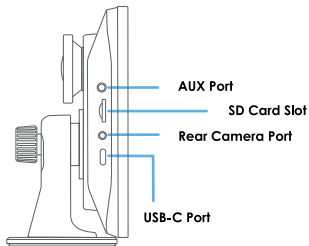
6. User Manual

7. 32g MicroSD Card

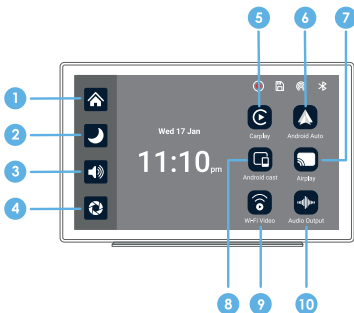
Product Overview

The CPDuo-9 features two-wide angle cameras to capture and transmit video of the surrounding area from the front + rear view.

Drivers can see obstacles and pedestrians around the vehicle intuitively, and effectively reduce the occurrence of scraping, collision, collapse and other accidents.



User Interface



- 1 **Home button:** Click to return to the main interface of the smart screen
- 2 **Brightness button:** Click to adjust the brightness of the screen
- 3 **Volume:** Click to adjust the volume
- 4 **Camera:** Click to view the camera screen
- 5 **CarPlay:** dedicated car screen projection program for Apple mobile
- 6 **Android Auto:** a dedicated car screen projection program for Android phones
- 7 **Airplay:** iPhone mirroring screen projection
- 8 **Android Cast:** Android phone mirroring and casting
- 9 **Wi-Fi Video:** Click to enter the connection interface, the mobile phone can view the recorded files in real time.
- 10 **Android Output:** Set the audio output channel

Installation

Step 1. Install the RoadMate CPDuo-9

1.1 Prepare the Mounting Position:

Clean the dashboard: Ensure the area where you'll mount the camera is clean and free from dirt, oil, or debris. Use a mild cleaner to wipe the surface and dry it thoroughly.

1.2 Mount the Camera:

Positioning: Align the camera to get the desired angle and view of the rear. Rear dash cams come with adhesive mounts or brackets for attachment.

Secure: Use the adhesive or mounting bracket to securely attach the camera to the chosen spot. Ensure it's firmly fixed to avoid any movement or displacement.

Step 2. Install the Memory Card

The Rexing CPDuo-9 accepts Class 10/UHS-3 or higher Micro SD memory cards up to 256GB. You will need to insert a memory card before begin recording.

Before inserting or removing a memory card, first ensure you've powered down the device. Gently push the memory card in until you hear a click, and allow the spring release to push the card out.

Step 3. Power on the Camera and Format the Memory Card

Power the camera by connecting the charger to the car cigarette lighter and camera. Before you start using a new memory card, you **MUST** format the card within the camera using the format function. Always backup important data stored on the memory card before formatting.

To format the memory card, make sure you have inserted your memory card, then turn on the device by connecting to a power source. Press OK to stop recording. Then toggle to the format settings and confirm the selection. You may now disconnect from power. The camera will shut down after 3 seconds. The camera should begin recording automatically the next time it is powered on.

Step 4. Mounting the Rear Camera and Wiring the Cables

4.1 Choose the Installation Location:

Near the License Plate: Mounting the camera near the license plate offers a clear rear view and ensures coverage of the back area.

4.2 Connect the Extension Cable:

Connect one end of the extension cable to the power input and video output ports on the rear dash cam.

4.3 Route the Extension Cable:

Securely route the extension cable along the interior of the vehicle, making sure to avoid any moving parts or obstructing airbags. Use cable clips or ties to secure the cable in place.

4.4 Connect to the Main Unit:

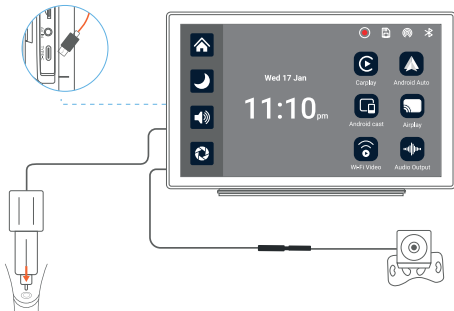
Connect the other end of the extension cable to the power input and video input ports on the main unit or display screen.

4.5 Secure Loose Wires:

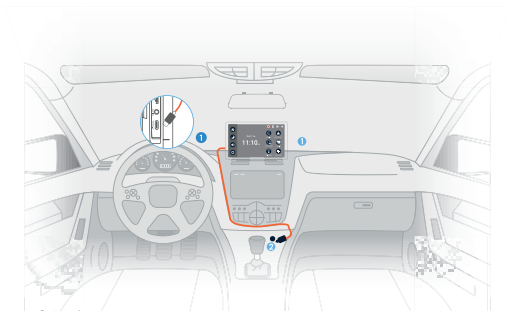
Use cable clips or ties to secure any loose wiring to prevent them from hanging or interfering with other vehicle components.

Step 5. Power on the Device

Power on the rear camera and main unit to test the connection. Ensure that both power and video signals are transmitted correctly.



Plug charger into power outlet or cigarette lighter



1 Type C Port

2 Cigarette lighter

To supply power, connect the **1** Type-C end of the power cable to the main device, and then insert the **2** cigarette lighter plug into the appropriate socket inside your vehicle.

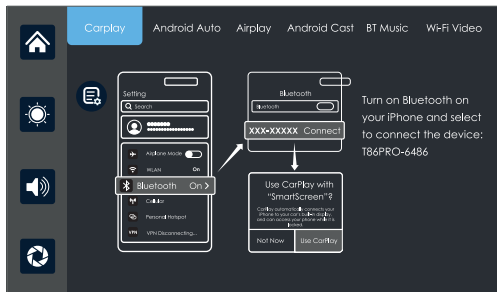
Note:

Please use the charger provided with the Rexing unit. Using an unauthorized charger may easily damage the device or cause injuries due to insufficient voltage and excessive heat. Additionally, the FM transmission function may not work properly.

SD Card Requirements

The quality of the SD card has a significant impact on the stability of video recording. To record safely, please use a MicroSDXC card that has at least 32GB and up-to 256GB storage w/ Speed Class10. It's important to use SD cards from major brands such as Rexing, SanDisk, Kingston, Toshiba, and Samsung.

CarPlay



Select 'CarPlay' and connect your iPhone. Make sure Bluetooth and Wi-Fi are turned-on. Connect to Bluetooth name: **T86PRO-XXXX**. Once Bluetooth has successfully connected, you can then proceed to connect to CarPlay, future connection will be automatically connect to the last paired phone.

Prompting

How to setup:

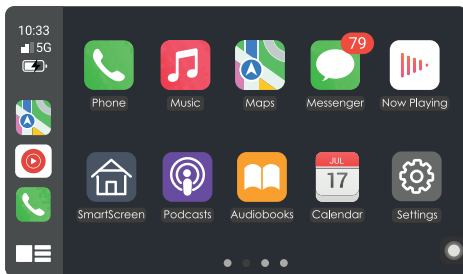
1. Click Carplay widget on SmartScreen.
2. Pair your iPhone to SmartScreen using Bluetooth; T86PRO-6486
3. When iPhone prompt "Use CarPlay with "SmartScreen"?", selected "Use CarPlay"

Tips:

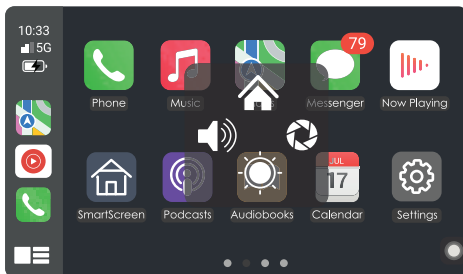
1. Longer waiting for the first connection
2. Only iPhone phones are supported
3. After successful connection, Bluetooth will be disconnected automatically



Click the Details button for detailed connection steps and connection FAQs.

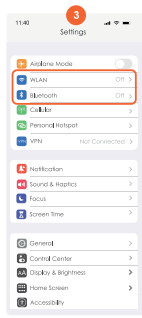
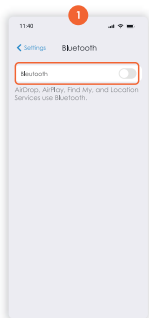


Click Assistive Touch to display the shortcut menu: **Home, Record, Volume, Brightness**

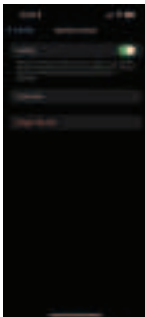


CarPlay only supports Apple devices.

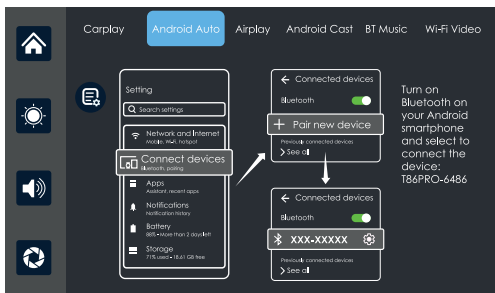
To disconnect from CarPlay, turn-off Wi-Fi and Bluetooth from your iPhone.



To manually enable CarPlay, go to iPhone Settings → CarPlay → T88PRO-XXXXX, then toggle CarPlay on.



Android Auto



Select 'Android Auto' and connect your Android. Make sure Bluetooth and Wi-Fi are turned-on. Connect to Bluetooth name: T86PRO-XXXX. Once Bluetooth has successfully connected, you can then proceed to connect to Android Auto, future connection will be automatically connect to the last paired phone.



Click the Details button for detailed connection steps and connection FAQs.

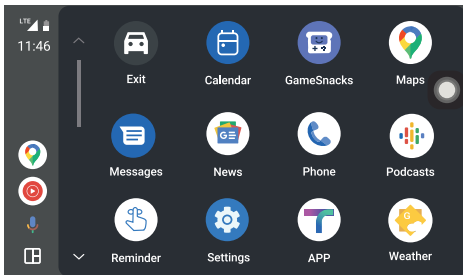
Prompting

How to setup:

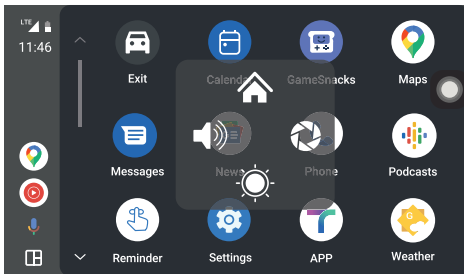
1. Click Android Auto widget on SmartScreen
2. Pair your phone to SmartScreen using Bluetooth: T86PRO-6486

Tips:

Please download the latest Android Auto application on your phone

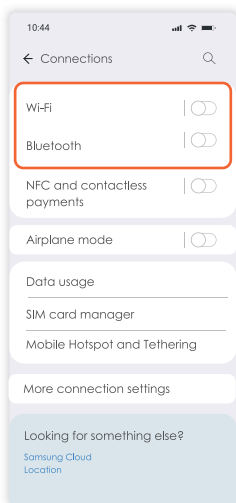


Click Assistive Touch to display the shortcut menu: [Back to Home], [Record Video Screen], [Volume Adjustment], [Brightness Adjustment].



Android Auto only supports Android devices.

To disconnect from Android Auto, turn-off Wi-Fi and Bluetooth from your Android.



AirPlay



Using AirPlay, you can wirelessly stream video, audio, and pictures from your iPhone to your car's entertainment system. Unlike Bluetooth, AirPlay operates over Wi-Fi for a more reliable connection.

Prompting

Connection steps:

1. Use iPhone to connect to Wi-Fi. Wi-Fi name is: AIRPLAY - 648644
2. Wi-Fi password is "12345678"
3. Select SmartScreen in the screen mirroring in the iPhone control center

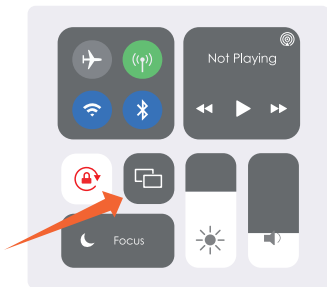
Tips:

1. Only iPhone phones are supported
2. This mode does not support Bluetooth connectivity



Click the Details button for detailed connection steps and connection FAQs.

1. Requires an iPhone to connect to Wi-Fi

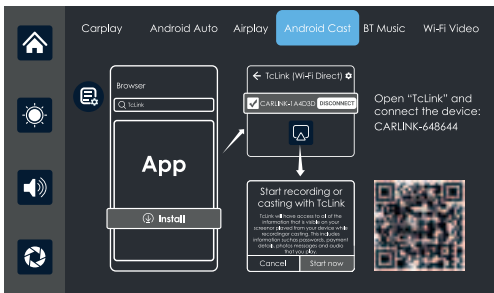


2. Select SmartScreen in Screen Mirroring in the iPhone Control Center

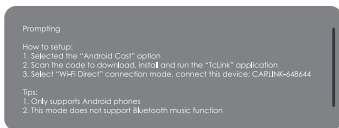
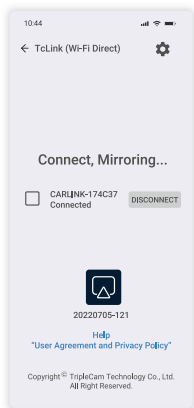
Note:

AirPlay only supports Apple devices.

Android Cast



Using Android Auto, you can wirelessly stream video, audio, and pictures from your iPhone to your car's entertainment system. Unlike Bluetooth, Android Auto operates over Wi-Fi for a more reliable connection.

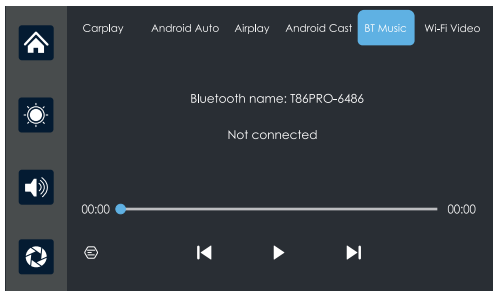


Click the Details button for detailed connection steps and connection FAQs.

Note:

Android Cast only supports Android devices that have "Wi-Fi Direct"

BT Music



First, activate the Wi-Fi and Bluetooth on your phone. Next, select the [BT Music] option. The Smart Screen will automatically enable Bluetooth, and its name will appear in the upper left corner. Connect your phone to the Smart Screen via Bluetooth to start playing music



The buttons correspond to "previous song", "play/pause" and "next song"

Click on the Lyrics button  to display the lyrics.

Note:

Some music streaming apps may not support the display lyrics function

Wi-Fi Video

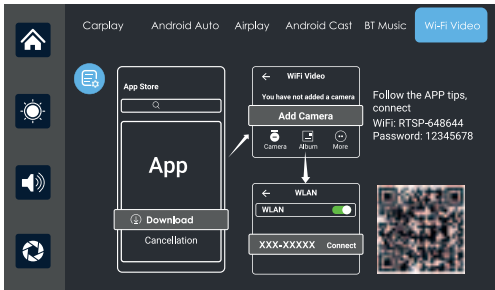
Permission Usage Statement

If you're unable to connect your phone to the dash cam using the Rexing Connect app, visit rexingusa.com/wifi-connect/ or scan the QR code below for assistance.

To ensure full functionality, the app may require the following permissions:

- Location – Enables location-based features for user posts.
- Storage – Allows saving videos and exporting data.
- Camera – Enables photo capture for user posts.
- Local Network – Supports device pairing and connection.
- Contacts – Allows sharing video clips with friends.

We prioritize your privacy. These permissions are used only for app functionality and do not collect or store personal data. You can manage permissions anytime through your device's system settings.



Scan the QR code to download the “Rexing Connect” application on your smartphone, as shown in the figure above.

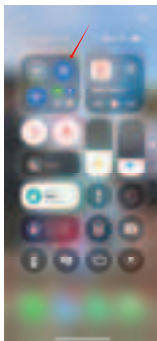


Click the Details button for detailed connection steps and FAQs.

Once downloaded, open the app and follow the prompts to connect your smartphone to adapter Wi-Fi name: RTSP-XXXXXX, as shown above.

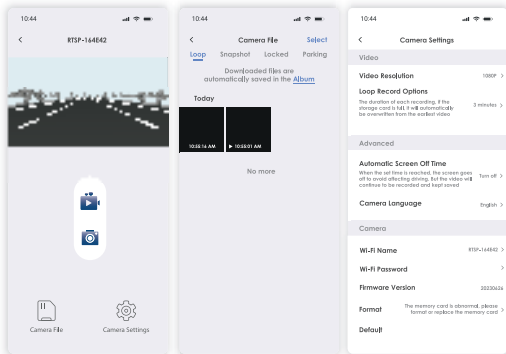
Note:

If the connection fails, disable your phone's cellular data and try again.

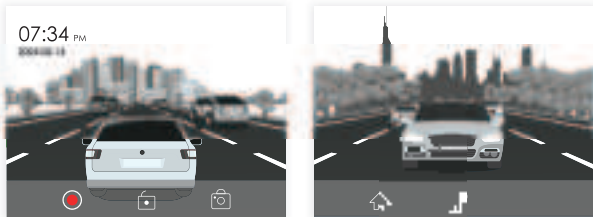


Note:

To disconnect from 'Wi-Fi Video,' turn off Wi-Fi from your smartphone.



Dash Cam



As depicted in the figure, the main page does not display the camera image. To view the camera image, you need to click the 'DVR' button. Upon inserting the card, the system will automatically enter recording mode.



Start recording and click Close recording again



Lock the video for a few minutes and the data will not be deleted



Click to take a photo with one click



Click to return to the main interface



Click to quickly return to the mobile Internet interface



Turn recording sound on or off

Locked Files

If too many videos are locked, **the first locked video will be overwritten.**

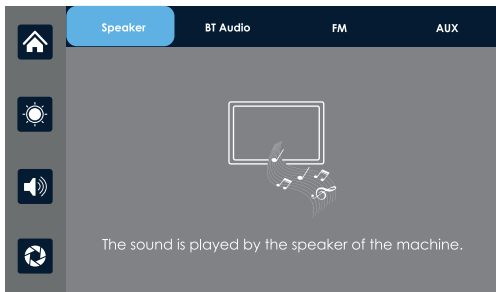
The number of videos that can be locked depends on the capacity of the SD memory card. 32G SD memory card can lock 40 videos, when locking the 41st video, the 41st video will overwrite the first one and the 42nd video will overwrite the second one.

64G SD memory card can store 80 locked videos, 128G SD memory card can store 160 locked videos, 256G SD memory card can store 320 locked videos.

The SD card supports a minimum of 32GB and a maximum of 256GB!

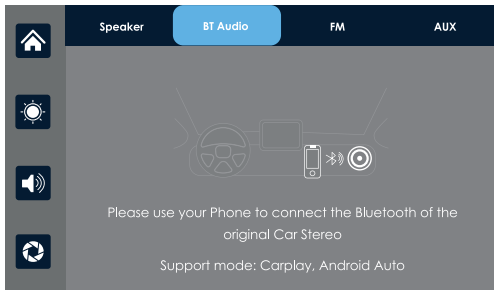
Audio output

Select 'Audio Output' to enter the audio menu.



Speaker

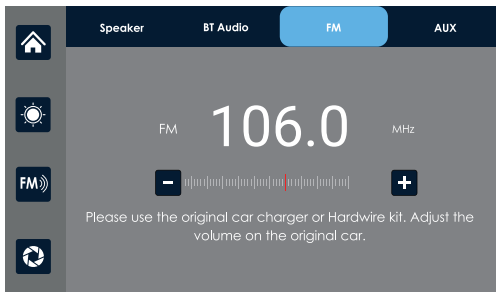
Sound is played through the adapter speakers.



BT Auto

Select this mode and connect to **CarPlay** or **Android Auto** to mirror your screen. Connect your phone via Bluetooth to the car's original system. Once connected, all device audio will play through the car's speakers via Bluetooth.

Once connected, the Bluetooth icon  will show and volume must be adjusted through the vehicle's system controls.



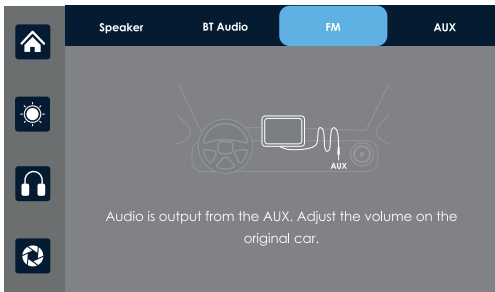
FM

After selecting this mode, FM transmission activates by default. Tune the device to an unoccupied FM channel, such as FM 106.0 MHz, and match the car radio to FM 106.0 MHz. Once connected, all device audio will be transmitted to the car speakers via FM

Once connected, the FM icon  will show and volume must be adjusted through the vehicle's system controls.

Note:

Please use the included power cord to ensure a stable connection. ONLY use power cords that match the manufacturers specifications.



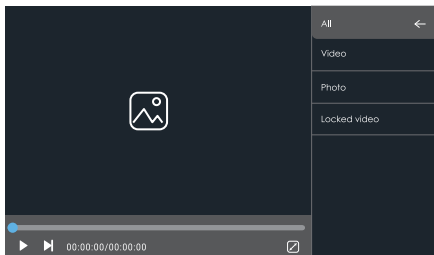
AUX

After selecting this mode, AUX output activates automatically. Connect the smart screen to the car using an AUX cable. Once connected, all device audio will play through the car's speakers via the AUX cable.

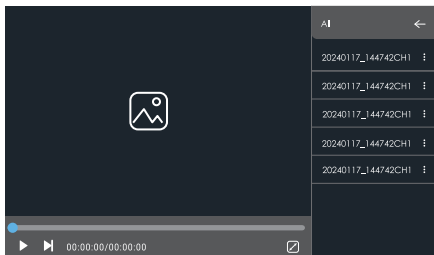
Once connected, the AUX icon  will show and volume must be adjusted through the vehicle's system controls.

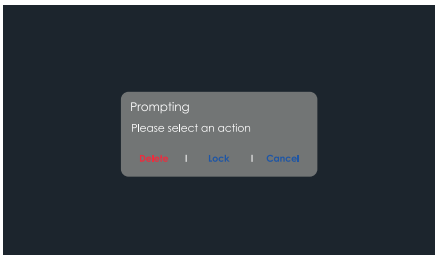
Playback

As shown in the above figure, click the [Playback] button to view the recorded video.



You can select the [Video], [Photo], [Locked Video] folder, and then click the Select button on the right side of the file to delete, lock or unlock the video.





Click to play or pause the video



Click to switch to the next video or photo

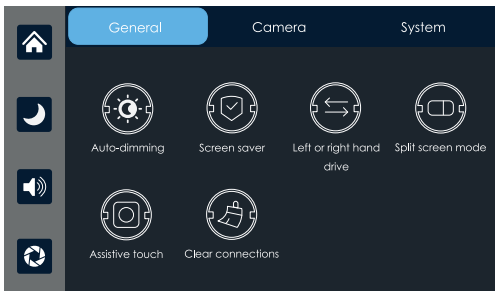


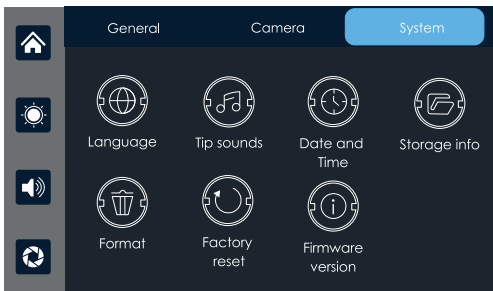
Click the "Full Screen" button to play the video in full screen.



Click to return to the previous screen

Device Settings





Click [**Screen saver**] to enter settings: screensaver can be set as:
Turn off / 10 seconds / 30 seconds / 1 minute.

After setting for 10 seconds or 30 seconds, if the system does not operate for the corresponding time, the screen will automatically turn off. After entering the screensaver, press the power button again to turn on the screen.



Click on [**left or right hand drive**] to enter the settings:

You can choose between left-hand or right-hand drive, and the shortcut menu bar in Carplay.

Select left rudder on the left, select right rudder on the right



[**Split screen mode**] see details below.



[**Auto-dimming**] Set the screen dimming schedule



[**Assistive touch**] It's a hover window button in your phone's screen casting mode, you can choose to turn it off or on.



If the customer has changed mobile phones, click to clear the connection records of all previous mobile phones.



Click on [**Camera Format**] to input settings: 720P / 720N / 1080P / 1080N

Two systems, choose a standard camera system.

Note

Selecting an unrelated camera system will result in abnormal display and video images. If the camera display screen or color is abnormal, please check if the corresponding camera system has been selected.



Click to enter the [**Record resolution**] settings: 720P / 1080P / 2.5K / 4K (different models, options will be somewhat different, subject to the actual object. 4K output through advanced 2K upscaling technology)



Click [**Segment duration**] to enter the setting of the video segmentation time:

Video segmentation time is optional: 1 minutes / 3 minutes / 5 minutes.

The system defaults to 3 minutes.



Click on [**Collision Sensitivity**] to enter the settings:

You can choose high / medium / low / off

When the sensitivity is turned on and the vehicle collides, the machine will automatically lock the video being recorded to ensure that it will not be overwritten or deleted by the loop recording.



Click [**Microphone**] to enter the settings:

You can choose to close or open.



Click on [**Rear mirror image**] to enter the settings: you can choose to turn it off or on.

This option makes it easier for customers to flexibly install cameras.



See the instructions below.



[**Reverse line calibration**] Please refer to the instructions below the form.



Click on [**Language**] to enter the settings: Language can be set: Simplified Chinese / Traditional Chinese / English / Russian / Spanish / French / German / Japanese / Korean / Italian / Portuguese



Click on the **[Tip sound]** to enter the settings: you can choose to turn it off or on.

After selecting off, the power on sound effect and touch and button sound effects will be turned off.

(Different models may have different options, subject to the actual product)



Click on **[Date and Time]** to enter the settings:

Set up separately: year / month / day / time / minute / second / 12H system / 24H system



Click **[Storage info]** to enter the menu: You can view the information of the SD card. The former item indicates the remaining available capacity, and the former item indicates the total capacity.



Click **[Format]** to enter the settings:

This option formats all data information inserted.

It is recommended to manually form format the first insert SD card to ensure sufficient card capacity.

Note

It is recommended that users manually format the SD card regularly.



Click **[Factory reset]** to enter the settings:

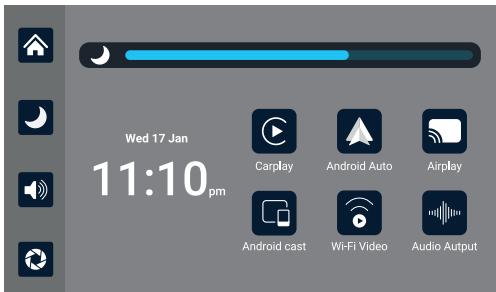
Restore factory settings, and the system will restore all settings to their original state.



Click on **[Firmware version]** to enter the menu:

This option allows you to see the current basic version for easy confirmation.

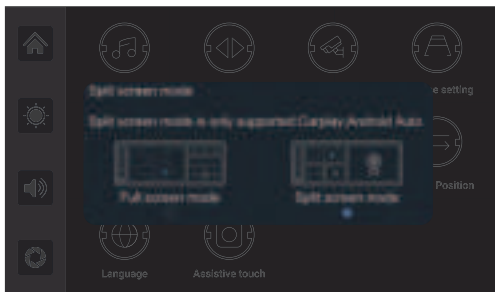
Screen Brightness



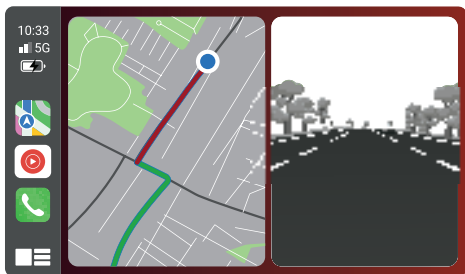
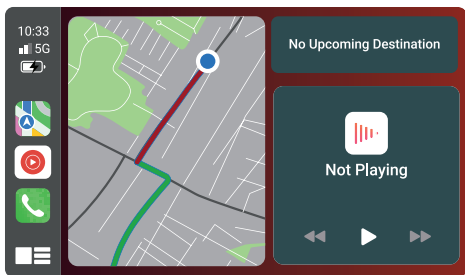
Click the  button on the sidebar, and then slide left/right to decrease/increase screen brightness.

Split screen mode

Click to select Full screen mode / Split screen mode



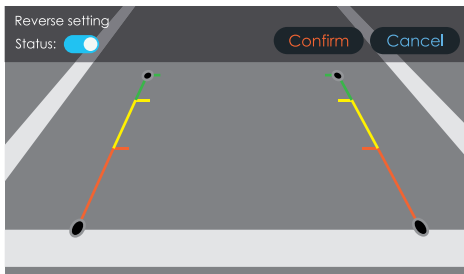
After selecting the Split screen mode, half of the screen displays the CarPlay/Android Auto interface and half of the screen displays the front road camera view when using the CarPlay/Android Auto mode with cell phone connectivity.



This feature is only available in CarPlay / Andorid Auto mode.


Reverse Parking Assistance


Click on **Reverse line calibration** to enter the settings:



Park the car in the middle of the parking space.

Status: ☒ You can choose whether to turn the reverse line feature off or on.

 Manually drag the left, adjust the position of the reversing assist line up, left and right, so that the reverse assist line is horizontal to the parking line on the left of the ground.

Drag the  at the bottom to adjust the position of the reverse line to the left and right.

After adjusting the reversing line, click **confirm** to save the calibration.

Parking Monitor (Parking Surveillance Mode)

Parking monitor provides surveillance on your parked vehicle. When the engine is off, the hardwire kit is used to provide continuous power and protect your car battery from being discharged.

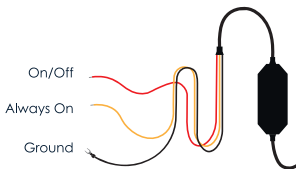
We kindly suggest taking a moment to watch our tutorial video. It's designed to help you have a smooth and successful installation experience. We believe you'll find it very helpful!

Please go to <https://www.rexingusa.com/ihwinstall> or scan QR code



Vibration Detection

To enable the Parking Monitor, you'll need to connect it with a Rexing FM Hardwire (Sold separately UPC: 810046601112).



This feature will allow the dash cam to switch to parking mode automatically if the vehicle's engine turns off and switch back to the normal recording after the vehicle's engine turns on.

Gravity Sensing Record:

The Gravity Sensing detects significant or sudden movement (such as an impact or collision), it will trigger an event recording. We suggest setting the "Gravity Sensing" to High sensitivity for Parking Mode Recording.

Note:

If you do not use the parking mode function, please change the Gravity Sensing sensitivity to low. Otherwise, the video will easily be locked and the video cannot be deleted by the loop recording function. This will cause the memory card to be full of locked videos and cause the recorder to fail to work normally.

Please **DO NOT ENABLE** the Parking Monitor function in the settings of the dash cam **WITHOUT** connecting the FM hardwire kit. They may cause a malfunction.

Troubleshooting

Number	Problem	Solution
1	Unable to start	<ol style="list-style-type: none">1. Check whether the power cord is damaged or aged.2. Check whether the fuse of the power cord is disconnected or burnt out
2	No touch phenomenon	<ol style="list-style-type: none">1. Touch is invalid during power-on, wait for normal power-on before operation.2. Check whether the touch is damaged, do not touch the screen with sharp objects, it is easy to scratch and damage.
3	No image from camera	<ol style="list-style-type: none">1. Use only after using the manufacturer's matching camera2. The camera connector is not loose.
4	High temperature lag phenomenon of the match	The normal operating temperature of CPDuo-9 is -4°F to 149°F. If the temperature exceeds the limit, disconnect the power. Wait until the temperature of the CPDuo-9 falls below 149°F before turning the power back on to begin operation.

- | | | |
|-------|-----------------------------|--|
| 5 | Carplay cannot connect | <ol style="list-style-type: none">1. The first connection takes a little longer.2. Only iPhone supports Carplay3. Check that the Wi-Fi and Bluetooth functions of the mobile phone are normal4. Enter Settings - General - Carplay vehicle, delete all records and reconnect.5. Restart the iPhone and reconnect it.6. Turn on the Siri function on your phone. |
| <hr/> | | |
| 6 | Android Auto cannot connect | <ol style="list-style-type: none">1. Only Android phones are supported.2. Update Auto and related applications on mobile phones to the latest version.3. Do not enable VPN on the mobile phone.4. Check that the Wi-Fi and Bluetooth function of the mobile phone are normal.5. Restart the Android phone and connect it again. |
| <hr/> | | |
| 7 | Wi-Fi Video cannot connect | <ol style="list-style-type: none">1. Try to upgrade the version of the application.2. Check if the SD card of the machine exists.3. Check if the machine's mode has been switched to Wi-Fi video mode. |

Reminder: Please ensure that there is no obstruction between the mobile phone and the device, and the Wi-Fi/Bluetooth signal communication is smooth, otherwise the product functions cannot be used smoothly.

Product Specifications

Project	Function introduction	Performance indicators
System	Language	Simplified Chinese / Traditional Chinese / English / Russian / Spanish / French / German / Japanese / Korean
	Interface	Graphical menu operation
	Mode of operation	Touch
Video input	Video input	2 channels FHD video input
	Video mode	Default boot recording, no missing seconds
	The video format	4K H.264 video, 2 channels of video saved separately
Video display	Real-time display	9-inch high-definition IPS screen
	The native playback	Local play, anytime to view
	The screen saver	Screen savers can be set to: off / 10 seconds / 30 seconds / 1 minute

Reverse display	Reverse display	Automatically switches to the rear view
	Astern line adjustment	Adjust the reversing line for various models
Smart connected	Wi-Fi	Supports CarPlay / Andorid Auto / Airplay / Android Cast / WiFi Video
The video store	SD card	CLASS10 U1 : 32GB minimum and 256GB maximum
Audio part	The microphone	Support microphone recording, menu can be set to turn off
Power part	The power input	The Hardwire kit supports a wide voltage range of 12-24V, and has car-grade anti-surge, anti-reverse connection and other power protection.
Power consumption	Two-way video	Less than 10W (screen display, 2-channel camera recording)
Other	Working temperature	-5~149°F
	The video time	Video recording duration can be set
	Rear camera mirroring	Rear camera screen support mirroring display, menu can be set up

Model	CPDuo-9
Master control	High performance SOC
Wireless function	CarPlay / Android Auto / AirPlay / Android Cast Wi-Fi Video
Screen	9 inch high-definition IPS screen
Storage	$32\text{G} \leq \text{SD} \leq 256\text{G}$ (Class 10)
Wireless module	Wi-Fi / Bluetooth / Audio output
Camera	Front and rear cameras
Audio output	Speaker, BT Audio, FM, AUX
Video	TS streaming
Working voltage	12V-24V
Power	Less than 10W
Weight	10.0 oz
Material quality	ABS/PC

Warranty & Support

Warranty

The Rexing CPDuo-9 comes with a full 12-month warranty. If you register your product on our official site (<https://www.rexingusa.com/support/registration>), you can extend the warranty to 18 months.

Support

If you have any questions regarding your product, please do not hesitate to contact us at care@rexingusa.com, or call us at (877) 740-8004. Queries are typically answered within 12-24 hours.

Your opinion matters

Rexing is firmly committed to always improving our products, services, and user experience. If you have any thoughts on how we can do even better, we welcome your constructive feedback and suggestions.

Connect with us today at care@rexingusa.com

Thank you for choosing Rexing!

FCC ID : 2AW5W-CPDUO9

This device complies with part 15 of the FCC Rules. Operation is subject to the following two conditions: (1) This device may not cause harmful interference, and (2) this device must accept any interference received, including interference that may cause undesired operation.

Changes or modifications not expressly approved by the party responsible for compliance could void the user's authority to operate this equipment.

This equipment has been tested and found to comply with the limits for a Class B digital device, pursuant to part 15 of the FCC Rules. These limits are designed to provide reasonable protection against harmful interference in a residential installation. This equipment generates, uses and can radiate radio frequency energy and, if not installed and used in accordance with the instructions, may cause harmful interference to radio communications. However, there is no guarantee that interference will not occur in a particular installation. If this equipment does cause harmful interference to radio or television reception, which can be determined by turning the equipment off and on, the user is encouraged to try to correct the interference by one or more of the following measures:

- Reorient or relocate the receiving antenna.
- Increase the separation between the equipment and receiver.
- Connect the equipment into an outlet on a circuit different from that to which the receiver is connected.
- Consult the dealer or an experienced radio/TV technician for help.

This equipment complies with FCC radiation exposure limits set forth for an uncontrolled environment. This equipment should be installed and operated with minimum distance 20cm between the radiator and your body.



MADE IN CHINA