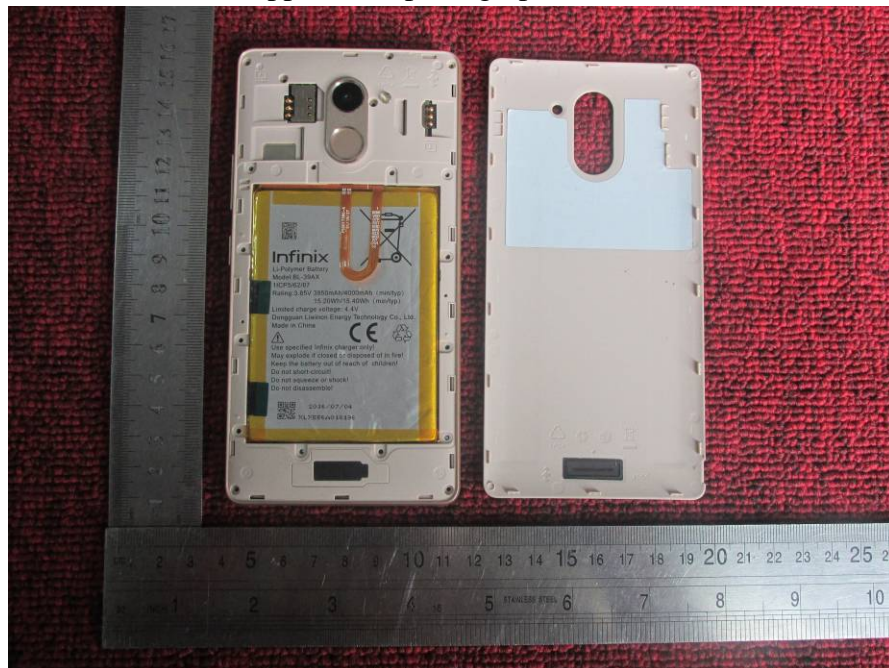


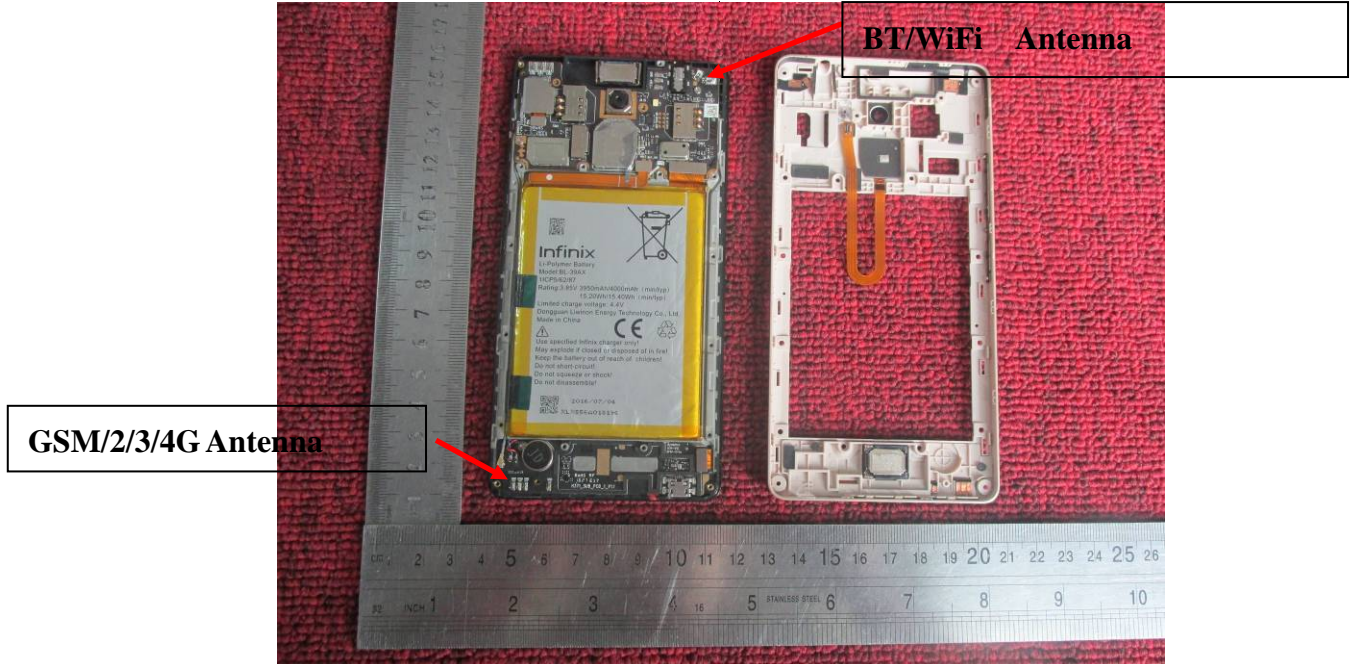
Appearance photograph of EUT



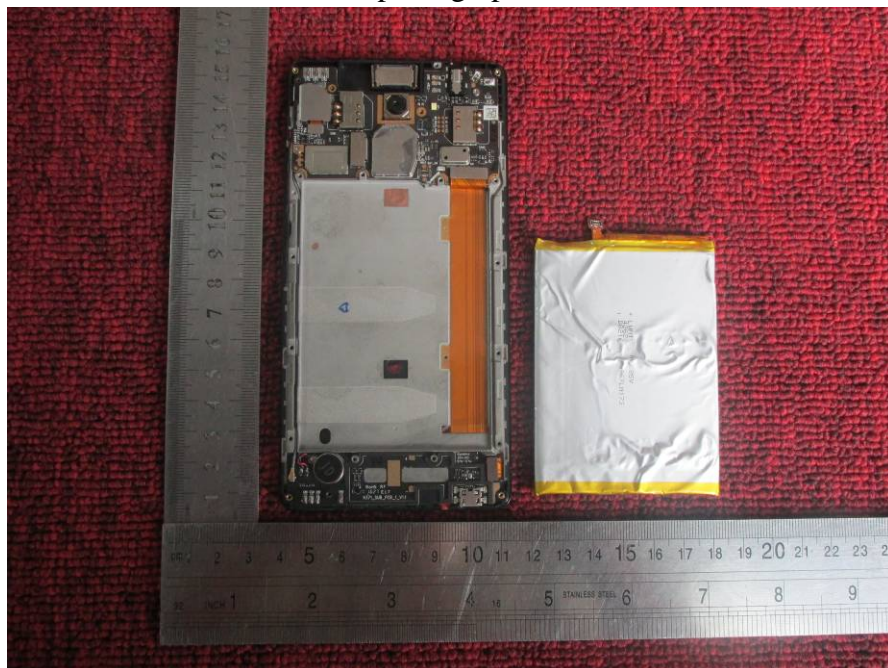
Appearance photograph of EUT



Internal photograph of EUT

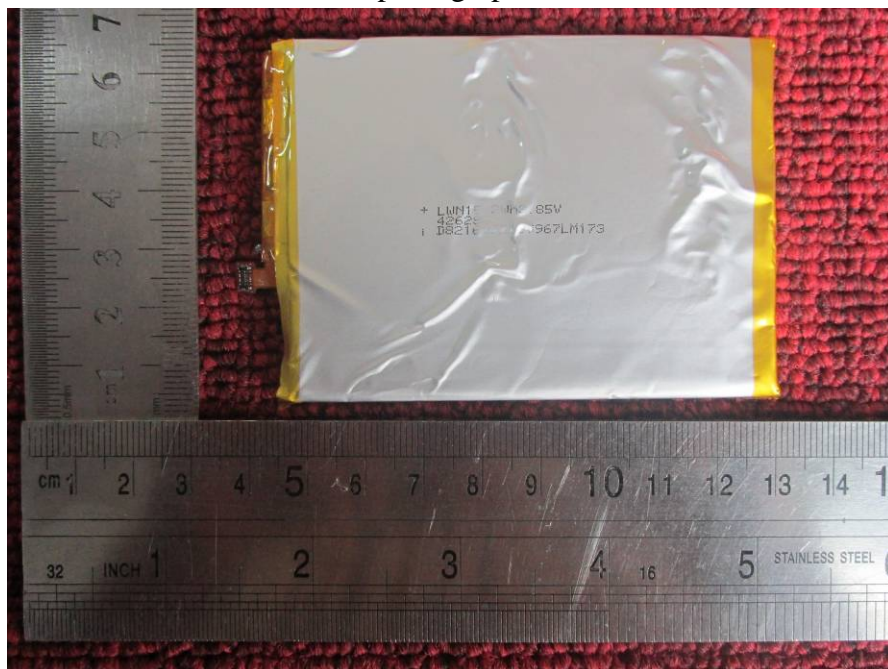


Internal photograph of EUT





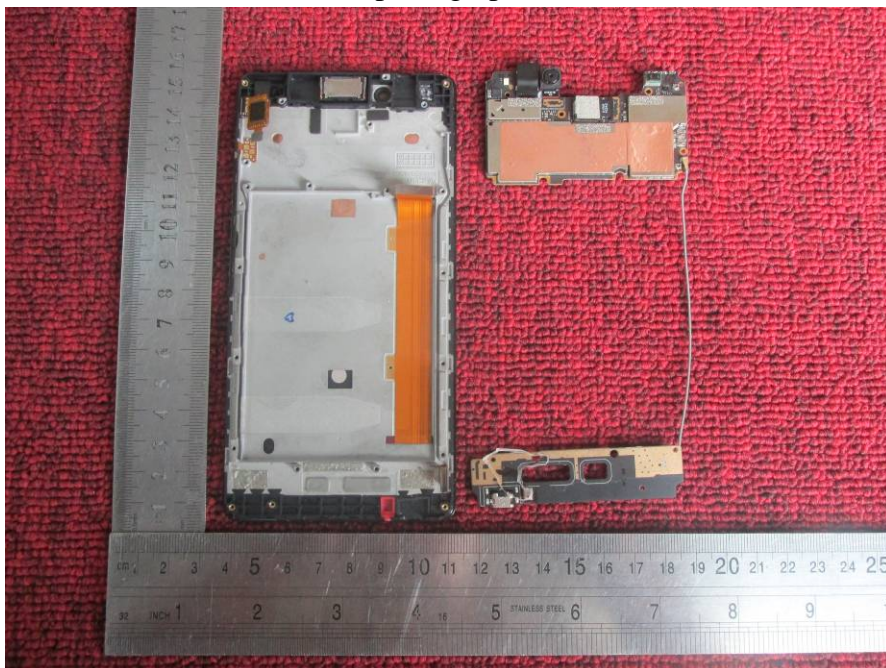
Internal photograph of EUT



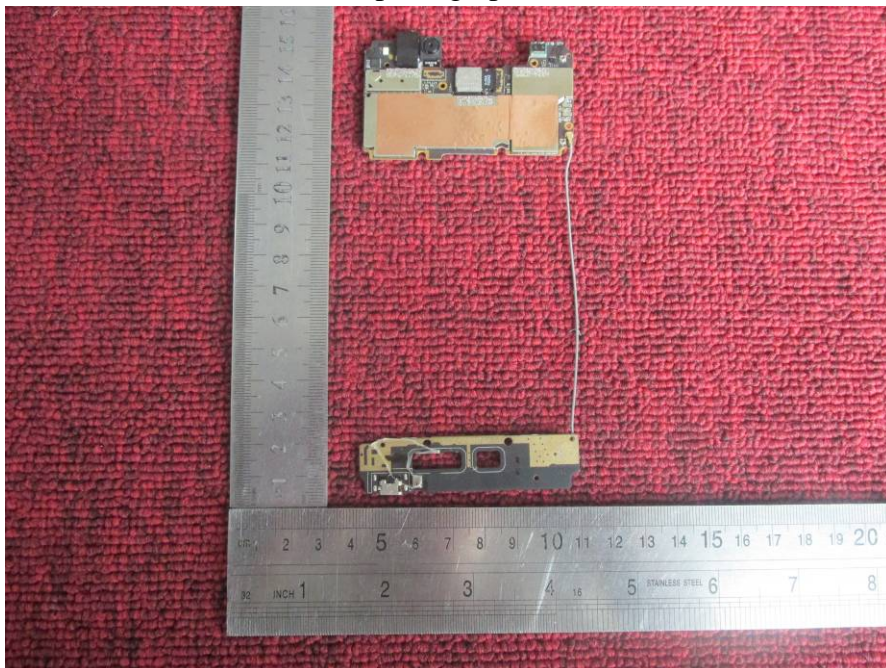
Internal photograph of EUT



Internal photograph of EUT

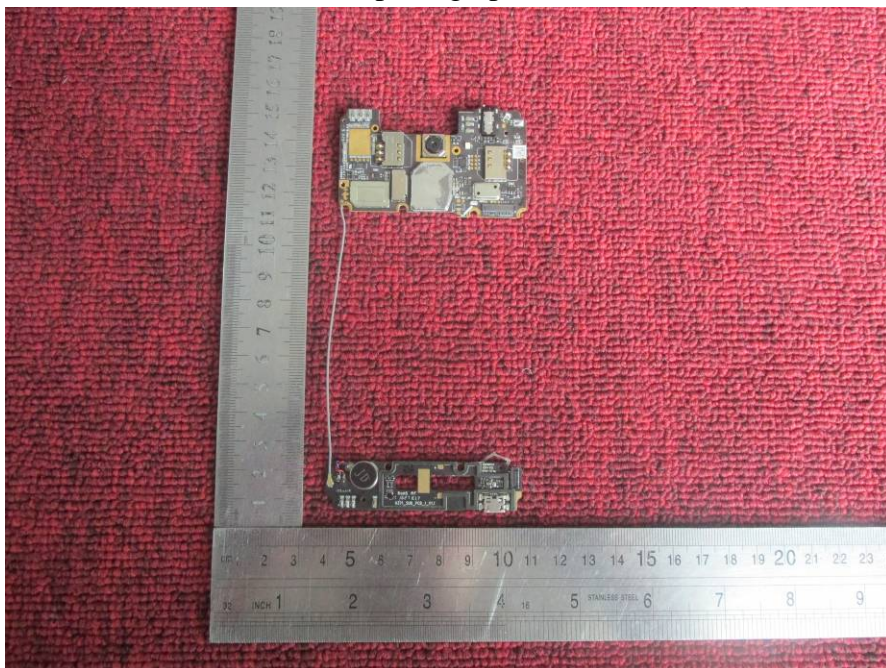


Internal photograph of EUT

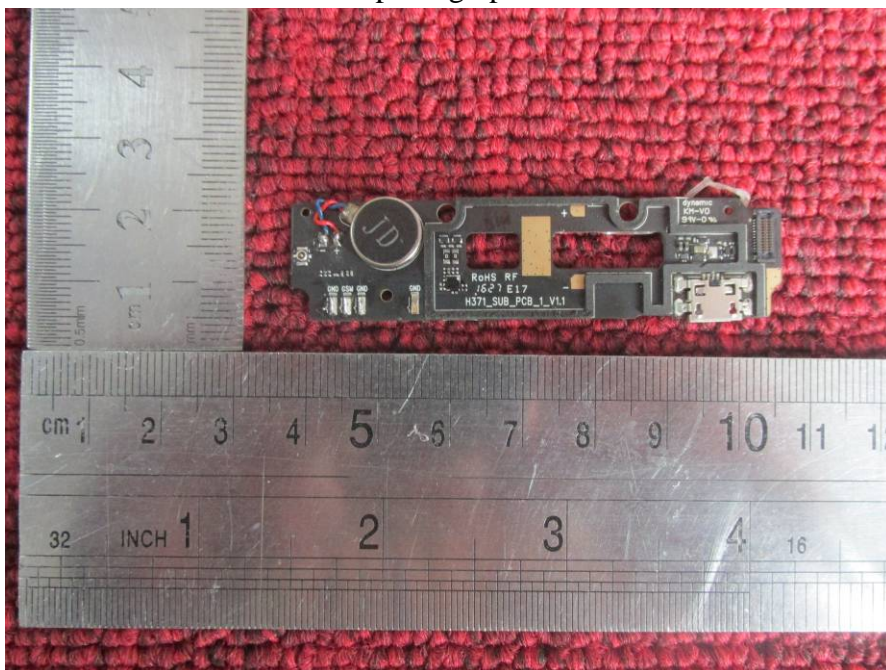




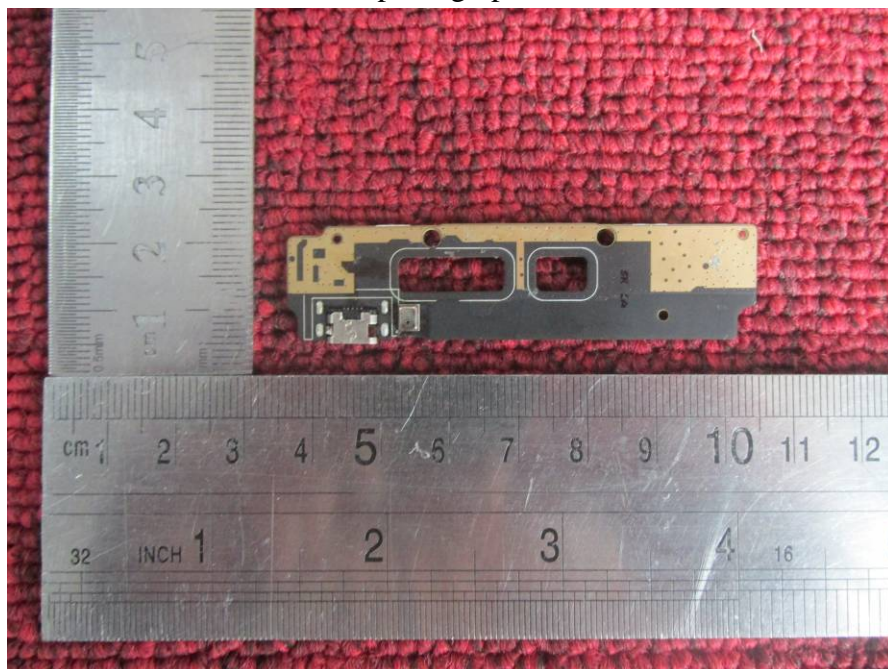
Internal photograph of EUT



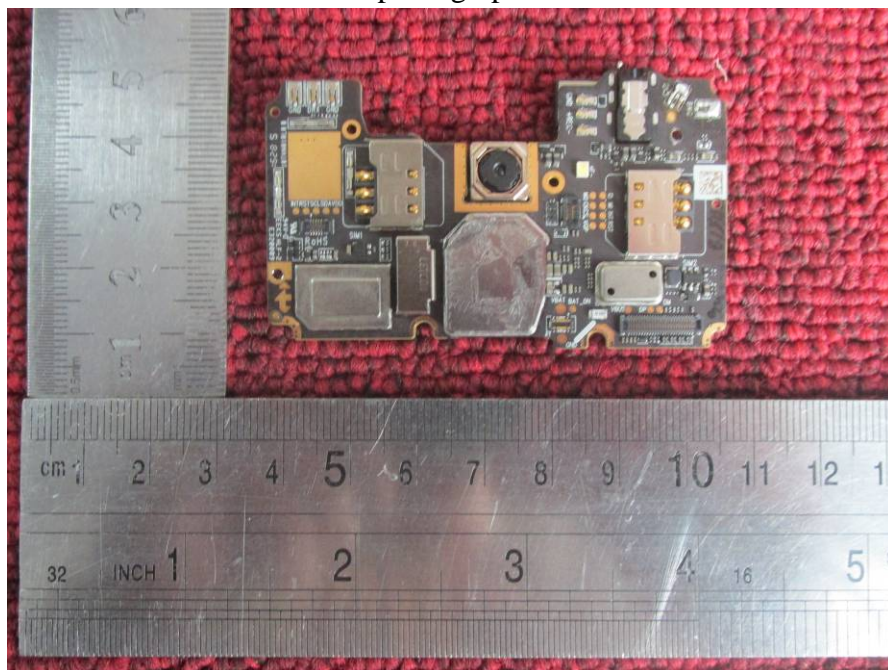
Internal photograph of EUT



Internal photograph of EUT

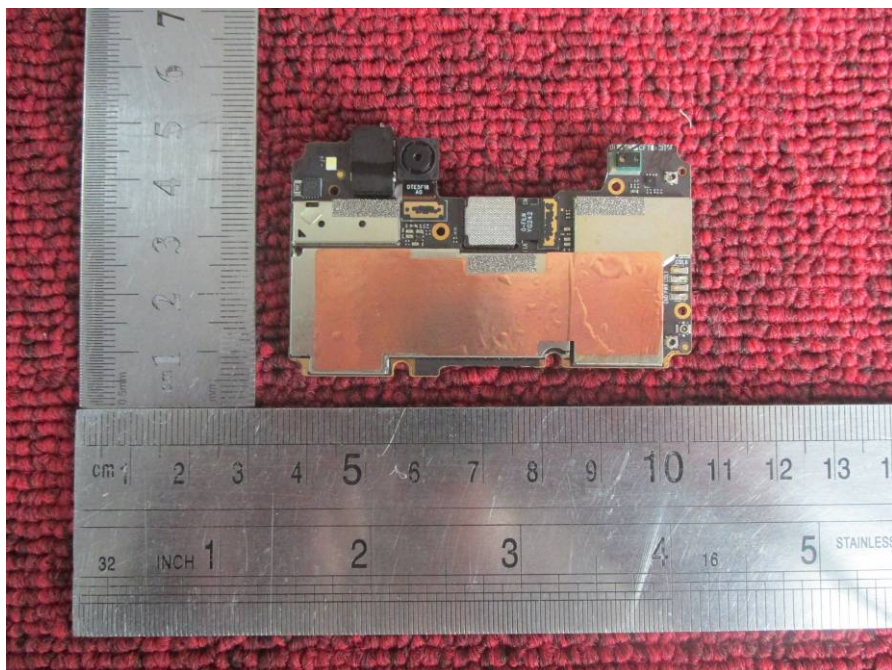


Internal photograph of EUT

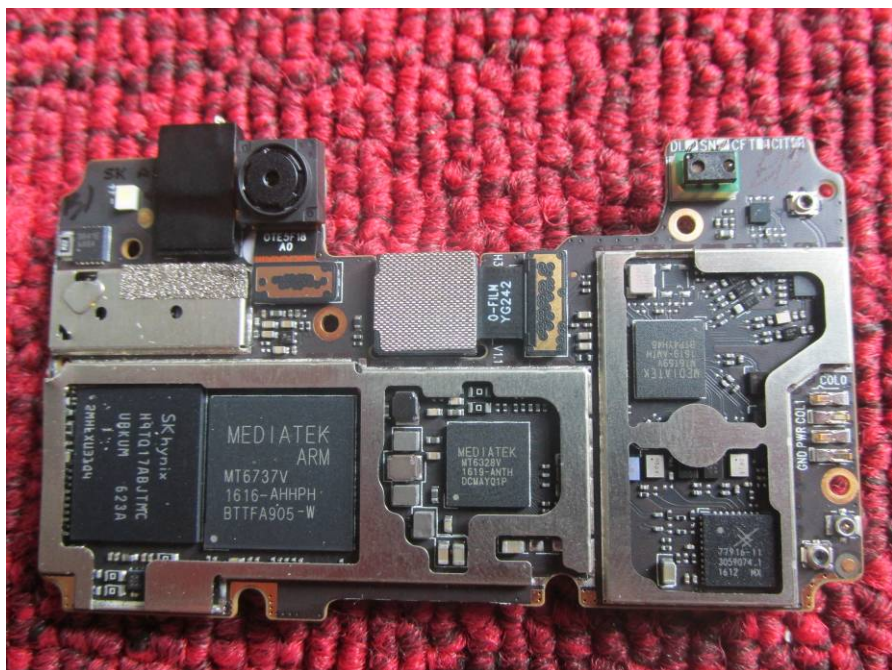




Internal photograph of EUT



Internal photograph of EUT



A photograph of a disassembled mobile phone, showing the internal components. The phone is lying on a red, textured surface. The main circuit board is visible, featuring a SIM card slot, a camera lens, and various electronic components. The text "RoHS" is visible on the board. The phone is shown from the back, with the battery cover removed.

