

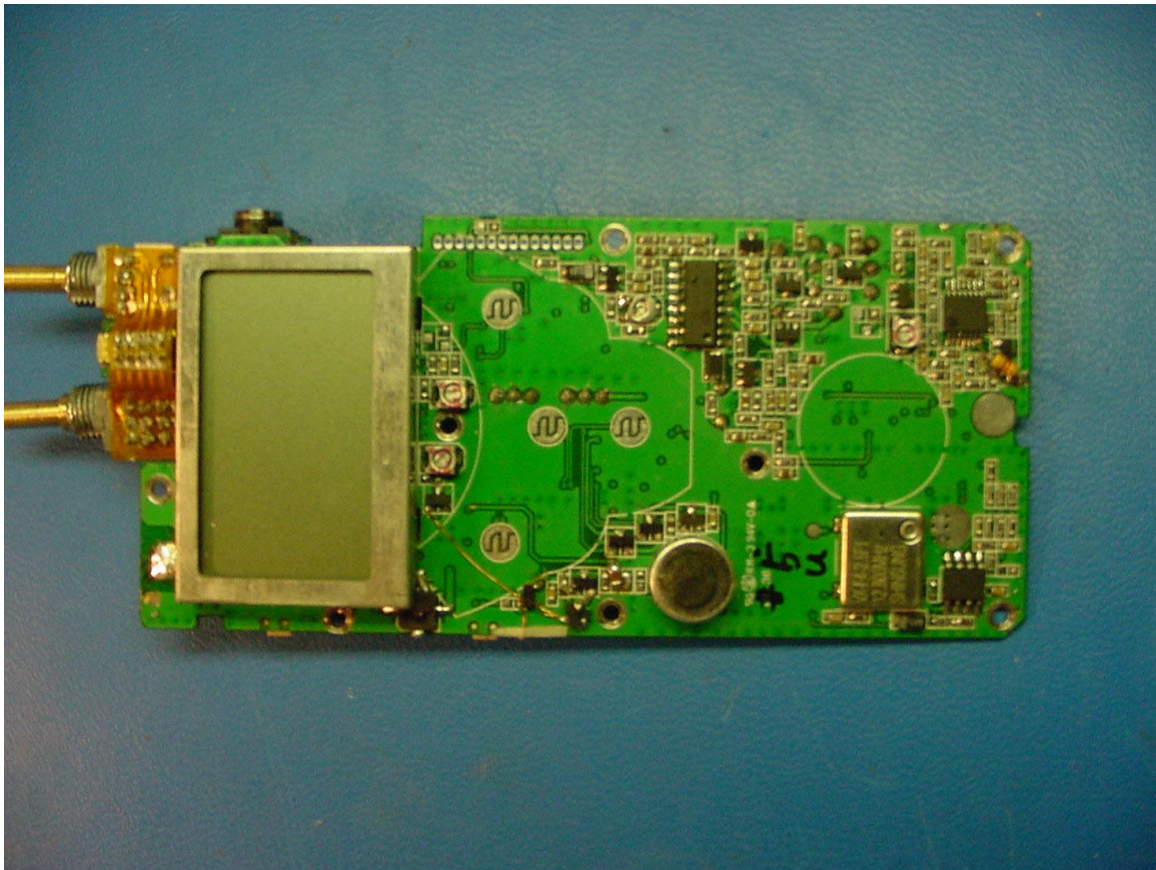


360 Herndon Parkway
Suite 1400
Herndon, VA 20170
<http://www.rheintech.com>

Work Order: 2001288
Quote Number: QRTL01-324
Dates of Tests: November 10, 2001
FCC Part 90 Certification &
Industry Canada RSS-119

Exhibit 14

APPENDIX M: INTERNAL PHOTOGRAPHS



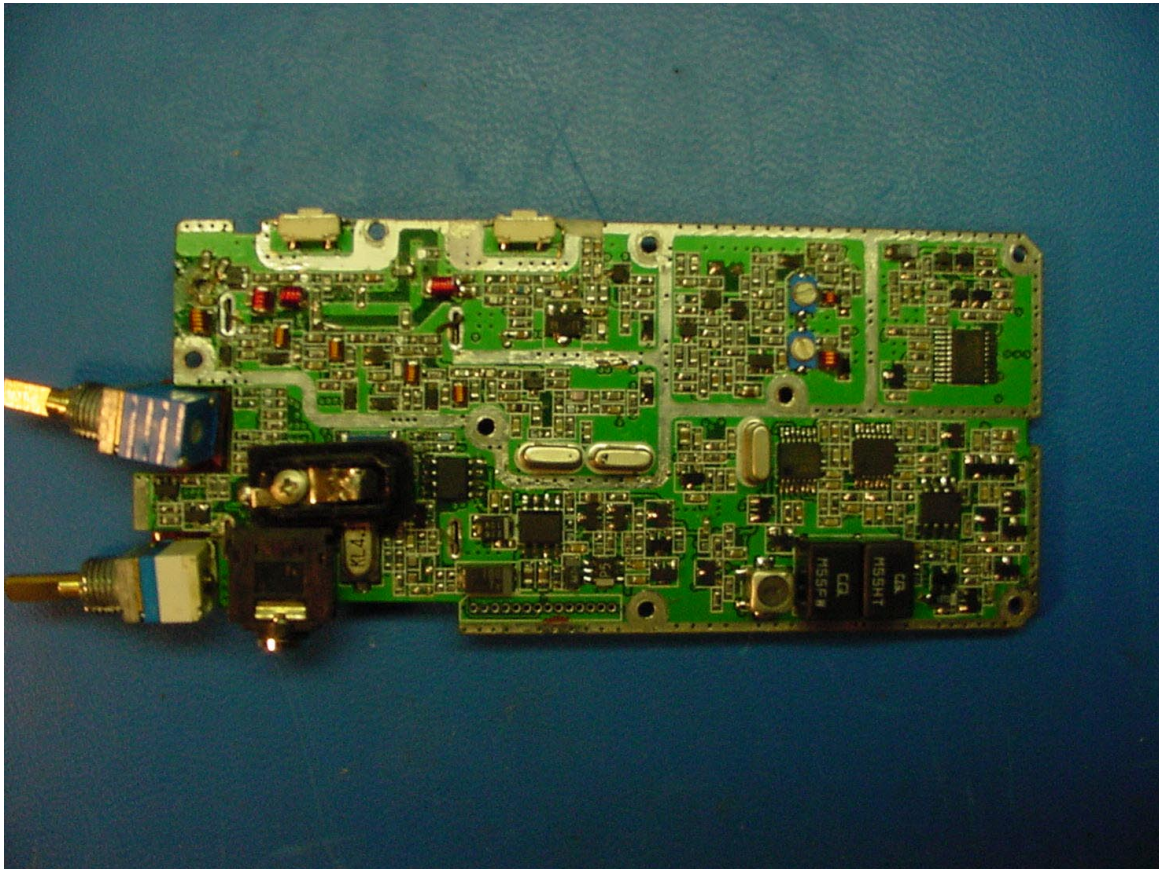
PHOTOGRAPH 11: FRONT VIEW OF PCB BOARD



360 Herndon Parkway
Suite 1400
Herndon, VA 20170
<http://www.rheintech.com>

Work Order: 2001288
Quote Number: QRTL01-324
Dates of Tests: November 10, 2001
FCC Part 90 Certification &
Industry Canada RSS-119

Exhibit 14



PHOTOGRAPH 12: REAR VIEW OF PCB BOARD



360 Herndon Parkway
Suite 1400
Herndon, VA 20170
<http://www.rheintech.com>

Work Order: 2001288
Quote Number: QRTL01-324
Dates of Tests: November 10, 2001
FCC Part 90 Certification &
Industry Canada RSS-119

Exhibit 14



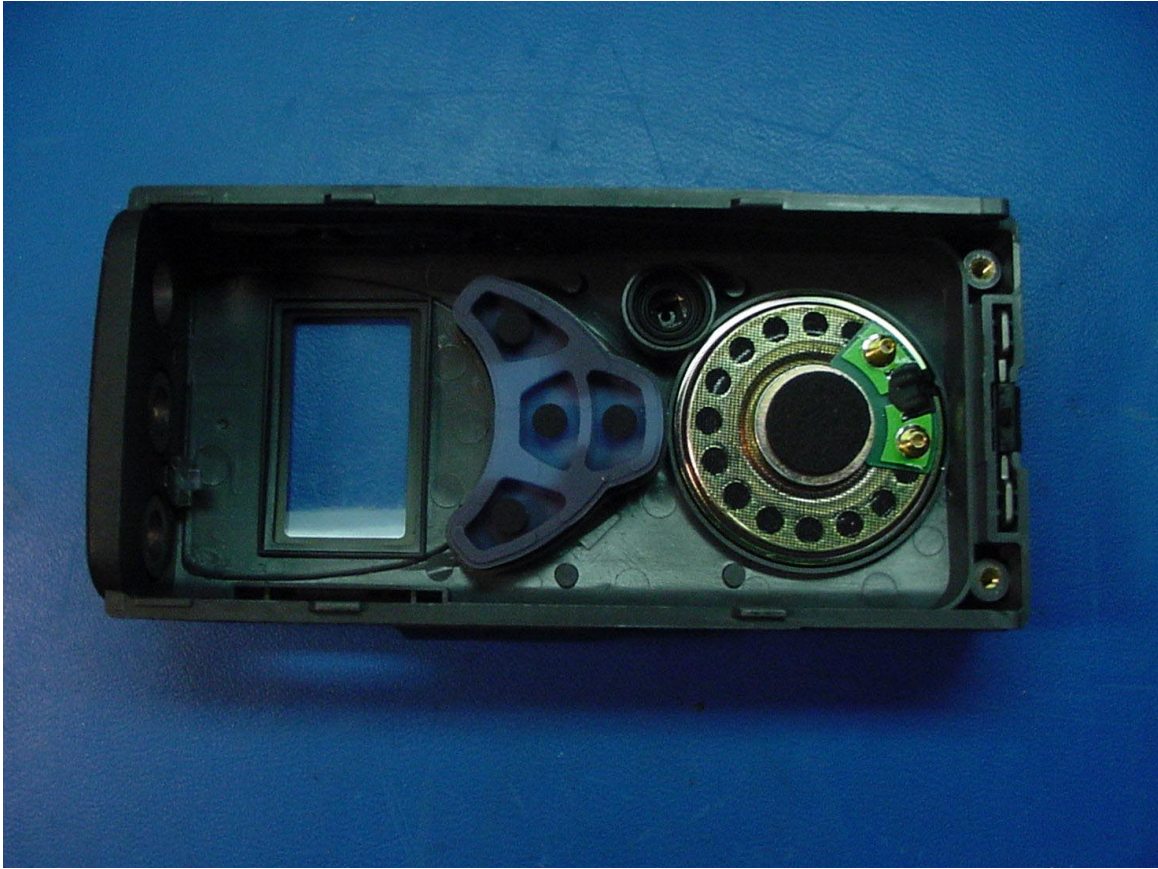
PHOTOGRAPH 13: FRONT VIEW OF THE HOUSING



360 Herndon Parkway
Suite 1400
Herndon, VA 20170
<http://www.rheintech.com>

Work Order: 2001288
Quote Number: QRTL01-324
Dates of Tests: November 10, 2001
FCC Part 90 Certification &
Industry Canada RSS-119

Exhibit 14



PHOTOGRAPH 14: INSIDE VIEW OF HOUSING



360 Herndon Parkway
Suite 1400
Herndon, VA 20170
<http://www.rheintech.com>

Work Order: 2001288
Quote Number: QRTL01-324
Dates of Tests: November 10, 2001
FCC Part 90 Certification &
Industry Canada RSS-119

Exhibit 14



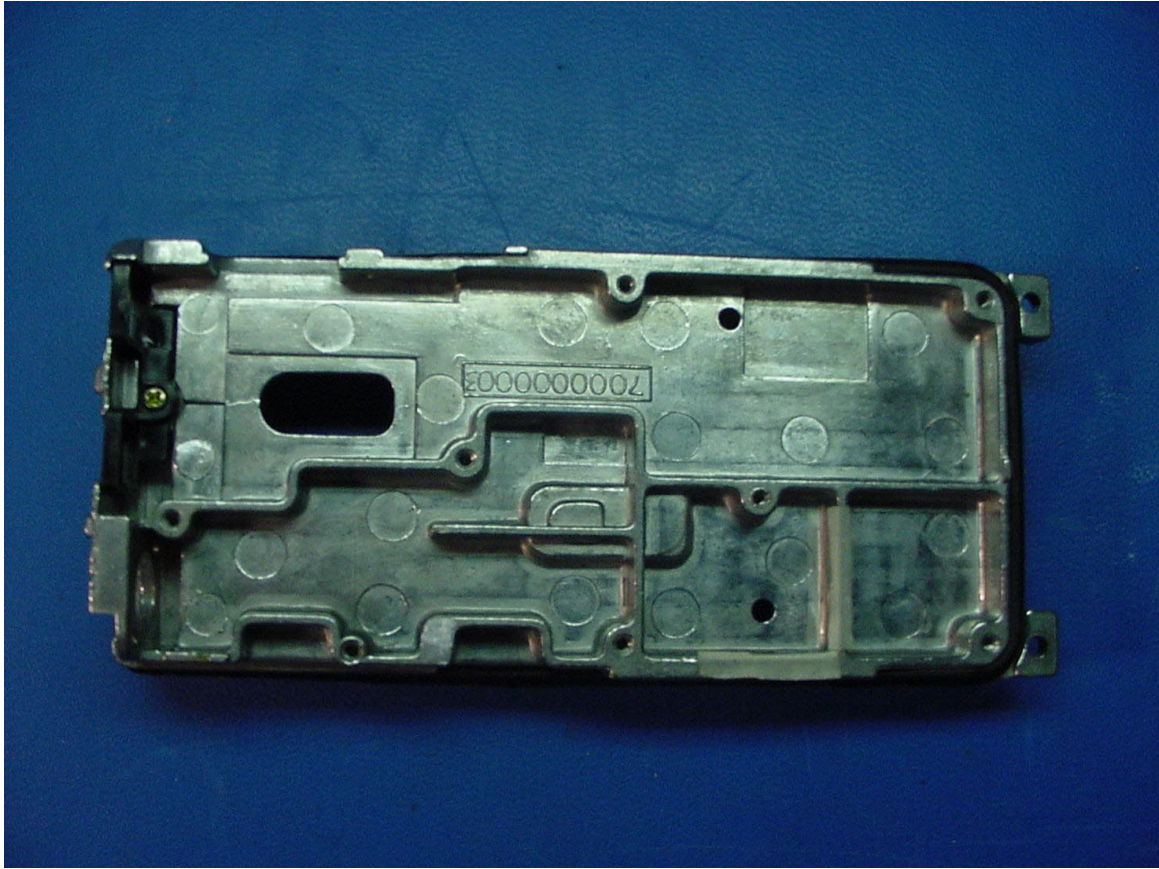
PHOTOGRAPH 15: FRONT VIEW OF THE CHASSIS



360 Herndon Parkway
Suite 1400
Herndon, VA 20170
<http://www.rheintech.com>

Work Order: 2001288
Quote Number: QRTL01-324
Dates of Tests: November 10, 2001
FCC Part 90 Certification &
Industry Canada RSS-119

Exhibit 14



PHOTOGRAPH 16: INSIDE VIEW OF CHASSIS