

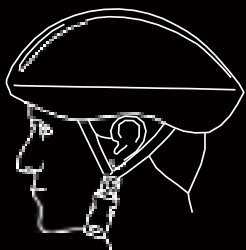
NIGHT OWL



OPERATION MANUAL
H1-NTL

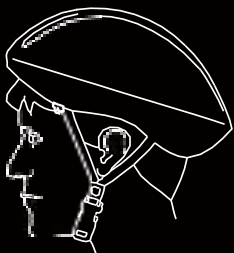
HELMETS SAVE LIVES!

Always wear a properly fitted helmet that complies with CPSC or CE safety standards when you ride your scooter.



Correct Fitting:

Make sure your helmet covers your forehead.



Incorrect Fitting:

Forehead is exposed and vulnerable to serious injury.

WARNING

As with all mechanical components, the Hover-1 Night Owl is subjected to wear and high stresses. Different materials and components may react to wear or fatigue in different ways. If the design life of a component has been exceeded, it may suddenly fail possibly causing injuries to the rider. Any form of crack, scratch or change of coloring in highly stressed areas indicate that the life of the component has been reached and it should be replaced. Do not ride in an abusive manner.

CAUTION

In this manual, the CAUTION sign indicates a hazardous situation which, if not avoided, can cause minor or moderate injury.

WARNING

In this manual, the WARNING sign indicates a hazardous situation which, if not avoided, can cause death or serious injury.

WARNING

Great care should be taken with the Hover-1 Night Owl when folding or unfolding. If you do not understand how to operate the levers, please visit www.Hover-1.com

DO NOT RIDE YOUR HOVER-1 Night Owl WITHOUT ALL RELEASES SECURELY LOCKED.

INTRODUCTION

This manual is designed to give you the information you need for the safe operation and maintenance of your new Night Owl scooter. Please read it thoroughly before riding your Night Owl.



WARNING

Make sure you read this complete manual before riding your Hover-1 Night Owl. Failure to do so, or failure to follow its guidelines could lead to serious injury or death.

The Night Owl is a personal transporter. Our technology and production processes are developed with strict testing for each Night Owl scooter. Operating the Night Owl without following the contents of this manual may lead to damage to your Night Owl scooter, or bodily injury.

PACKAGE CONTENTS

- Hover-1 Night Owl Electric Folding Scooter
- Charging Cable
- Charger
- Operation Manual

Your Hover-1 Night Owl's serial number is stamped respectively on the bottom of the platform. Record the serial number in the designated area of the "WARRANTY" section of this manual in the event that your Hover-1 Night Owl is lost or stolen.

WARNING!

PLEASE READ THE USER MANUAL THOROUGHLY.

Failure to follow the basic instructions and safety precautions listed in the user manual can lead to damage to your scooter, other property damage, serious bodily injury, and even death.

Thank you for purchasing the Hover-1 Night Owl. Please read all instructions carefully before using and retain this manual for future use and reference.

This manual applies to the Hover-1 Night Owl.

- In order to avoid dangers that are caused by collisions, falls, and loss of control, please learn how to ride the Night Owl safely.
- You can learn operating skills by reading the product manual and watching videos.
- This manual includes operating instructions and precautions. Users must read it carefully and follow the instructions.
- All users are responsible for any consequences caused by violating warning contents or prompt operations. Hover-1 can not be held liable.

ATTENTION

1. Use only the supplied charger with this scooter.
2. The operating temperature range of the charger is 32– 104° F (0–40° C).
3. The operating temperature range of the E-Scooter is 32 – 104° F (0 – 40° C).
4. Do not ride on icy or slippery surfaces.
5. Read the operation manual and warning labels before riding.
6. Store the Night Owl in a dry, ventilated environment.
7. When transporting the Night Owl, avoid violent crashes or impact.

LOW TEMPERATURE WARNING

Low temperature will affect the lubrication of moving parts inside the Night Owl, increasing internal resistance. At the same time, in low temperatures, the discharge capacity and the capacity itself of the battery will be significantly decreased.

Use caution when riding the Night Owl in cold temperatures (below 40 degrees F).

Doing so may increase the risk of mechanical failures of the scooter, which may lead to damage to your scooter, other property damage, serious bodily injury and even death.

SAFETY INSTRUCTIONS

- Keep the scooter away from heat sources, direct sunlight, humidity, water and any other liquids.
- Do not operate the scooter if it has been exposed to water, moisture or any other liquids to prevent against electric shock, explosion and/or injury to yourself and damage to the scooter.
- Do not use the scooter if it has been dropped or damaged in any way.
- Repairs to electrical equipment should only be performed by the manufacturer. Improper repair voids the warranty and may place the user at serious risk.
- Do not puncture or harm the exterior surface of the product in any way.
- Keep the scooter free from dust, lint, etc.
- Do not use this scooter for anything other than its intended use or purpose. Doing so may damage the scooter or lead to property damage, injury or death.
- This product is not a toy. Keep out of reach of children.
- Do not expose batteries, battery pack, or batteries installed to excessive heat, such as direct sunlight, or open flame.
- Do not allow hands, feet, hair, body parts, clothing or similar articles to come in contact with moving parts, wheels or drive-train, while the Night Owl is running.

- Do not operate, or allow others to operate, the Hover-1 Night Owl, until the user understands all instructions, warnings and safety features described in this manual.
- Check with your doctor if you have a medical condition that could affect your ability to use the Hover-1 Night Owl.
- Persons with head, back or neck ailments or prior surgeries to those areas of the body are not recommended to use this Hover-1 Night Owl.
- Do not operate if you are pregnant, have a heart condition, or have both.
- Persons with any mental or physical conditions that may make them susceptible to injury or impair their physical or mental capabilities to recognize, understand and perform all of the safety instructions and to be able to assume the hazards inherent in unit use, should not use the Hover-1 Night Owl.



NOTES:

In this manual, the above symbol with the word "NOTES" indicates instructions or relevant facts the user should remember prior to using the scooter.



CAUTION!

In this manual, the above symbol with the word "CAUTION" indicates a hazardous situation which, if not avoided, can cause minor or moderate injury.



WARNING!

In this manual, the above symbol with the word "WARNING" indicates a hazardous situation which, if not avoided, can cause death or serious injury.

SERIAL NUMBER

Please keep the serial number on file for warranty claims as well as proof of purchase.



WARNING!

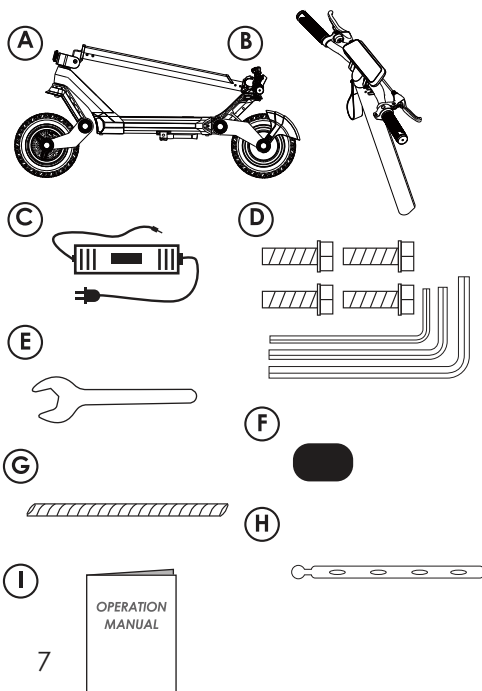
WARNING: Prolonged exposure to UV rays, rain and the elements may damage the enclosure materials. Store indoors when not in use.

SPECIFICATIONS

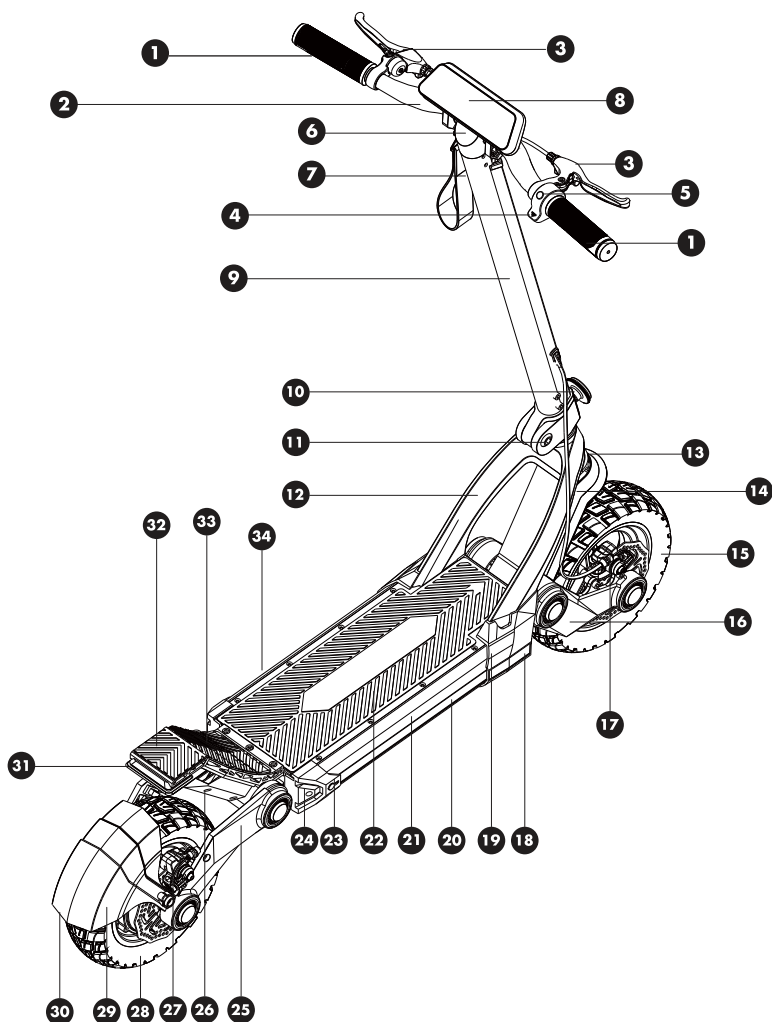
Model:	H1-NTL
Net Weight:	57.3lb (26 kg)
Max Supported Weight:	220lb(100kg)
Min Supported Weight:	40lb/18kg
Max Speed:	Up to 31 mph (50 km/h)
Max Distance Range:	Up to 37 miles (60 km)
Battery Type:	Lithium-ion
Motor Power:	1200 W
Battery Voltage:	52 V
Battery Capacity:	18 Ah
Power Requirement:	100-240V, 50/60Hz
Folding Size:	(47 in. x 26 in. x 22 in.) (119 cm x 66 cm x 55 cm)
Open Size:	(47 in. x 26 in. x 51 in.) (119 cm x 66 cm x 129 cm)
Tire Type:	Semi-Off Road
Tire Size:	10.5" Front & Rear
Brake Type:	Dual Disk + E-Brake
BT ID:	D058080
FCC ID:	2AANZNTL

PARTS LIST

- A.** Scooter Frame
- B.** Handle Bar Assembly
- C.** Charger + Charging Cable
- D.** 3 PCS Allen Wrench & M6 Screws (6)
- E.** M15 Spanner
- F.** Rubber Vibration Damper
- G.** Plastic Spiral Cable Wrap
- H.** Silicone Cable Tie
- I.** Operation Manual



HOVER-1 NIGHT OWL DIAGRAM



FEATURES/PARTS

- | | | |
|-------------------|----------------------------|---------------------|
| 1. Handle Grip | 13. Front Suspension Base | 27. Rear Disc Brake |
| 2. Steering Bar | 14. Front Fender | 28. Rear Wheel |
| 3. Brake and Bell | 15. Front Wheel | 29. Rear Fender |
| 4. Throttle | 16. Front Suspension | 30. Rear Reflector |
| 5. Power Button | 17. Front Disc Brake | 31. Tail Light |
| 6. Handlebar Base | 18. Front Light | 32. Rear Deck |
| 7. Locking Ribbon | 19. Side Reflector | 33. Rear Foot Pedal |
| 8. Display | 20. Side Light Cover | 34. Kickstand |
| 9. Steering Pole | 21. Deck | |
| 10. Folding Screw | 22. Foot Pedal | |
| 11. Folding Bar | 23. DC IN | |
| 12. Front Axle | 24. Deck Rear Cover | |
| | 25. Rear Suspension | |
| | 26. Rear Deck Bottom Cover | |

HOVER-1 NIGHT OWL DIAGRAM

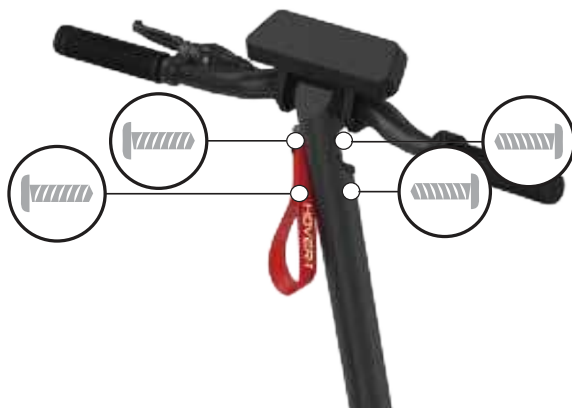


SETTING UP YOUR SCOOTER

PLEASE READ THE FOLLOWING INSTRUCTIONS CAREFULLY

ATTACHING THE HANDLEBAR KIT

Attach the handle bar kit by placing it into the steering column, align the front and back screw holes, and tighten the 4 screws into place using the Allen wrench provided.



PINCH POINTS

Some parts of your Hover-1 Night Owl can injure you if mishandled. Moving and folding parts can cut skin please use caution when adjusting parts. Clamps and pivoting parts such as brake levers can pinch please be careful. When folding and unfolding your Hover-1 Night Owl, please watch for pinch points where possible injury may be sustained. Do not leave your hand in these areas during folding or unfolding.



FOLDING & UNFOLDING

- 1 Loosen the folding hinge until the screw is out of the fold
- 2 Put down the steering pole
- 3 Hang the locking ribbon to the bottom of the rear pedal



Before riding please make sure to fully tighten the folding screw

Once folded secure locking ribbon around back of scooter

CARE & MAINTENANCE

- Do not expose the scooter to liquid, moisture, or humidity to avoid damage to the product's internal circuitry.
- Do not use abrasive cleaning solvents to clean the scooter.
- Do not expose the scooter to extremely high or low temperatures as this will shorten the life of the electronic scooter, destroy the battery, and/or distort certain plastic parts.
- Do not dispose of the scooter in fire as it may explode or combust.
- Do not expose the scooter to contact with sharp objects as this will cause scratches and damage.
- Do not let the scooter fall from high places, as doing so may damage the internal circuitry.
- Do not attempt to disassemble the scooter.
- Only use the charger provided by Hover-1.
- Using only the manufacturer's authorized replacement parts with installation performed by dealers or other skilled persons.

WARNING

Avoid using water or other liquids for cleaning. If water or other liquids enter the Night Owl, it will cause permanent damage to the internal components.

WARNING

Users who disassemble the Night Owl scooter without permission will void the warranty.

CHARGING YOUR SCOOTER

- Ensure that the charging port is clean and dry.
 - Make sure that there is no dust, debris or dirt inside the port.
 - Plug the charger into a grounded wall outlet.
 - Connect the cable with the power supply.
 - Align and connect the 1-pin charging cable into the charging port of the Night Owl Scooter.
- (DO NOT FORCE OR BEND THE CHARGING CABLE AS IT MAY CAUSE THE PRONGS TO BEND OR BREAK.)
- The charging indicator light on the charger itself should change to RED, indicating that your scooter is now being charged.
 - When the RED indicator light on your charger turns to GREEN, then your scooter is fully charged.
 - After fully charging your Night Owl Scooter, unplug the charger from your scooter and from the power outlet.

WARNING

Any Night Owl Scooter that does not work properly can cause you to lose control and fall. Inspect the entire device thoroughly before every ride, and do not ride it until any problems have been corrected.

