

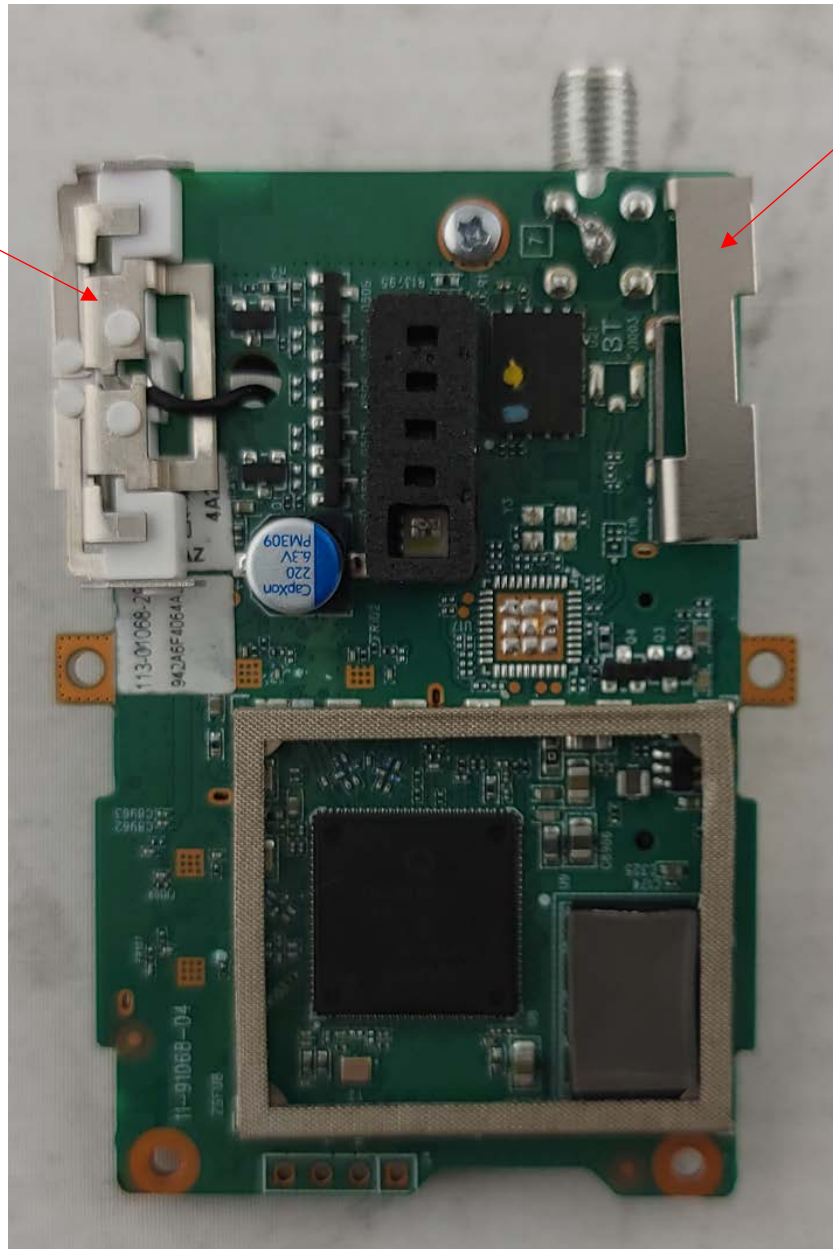
2.4 & 5 GHz
External Antenna
only used in
External/Internal
Antenna Mode



Photograph 1: Top Side Of RF/Transmitter PCB with Cans Off

2.4 & 5 GHz Internal
Antenna and in
External/Internal
Mode

2.4 & 5 GHz Internal
Antenna Only in
Internal Antenna
Mode



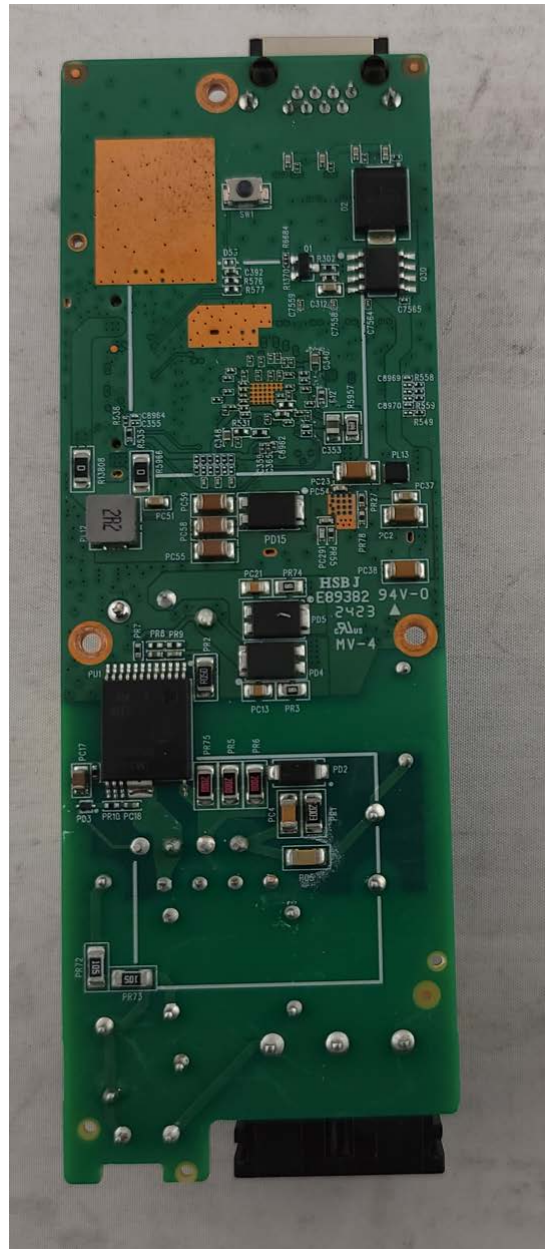
Photograph 2: Bottom View of RF/Transmitter PCB



Photograph 3: Top View of PoE/Power PCB with Can On



Photograph 4: Top View of PoE/Power PCB with Can Off



Photograph 5: Bottom View of PoE-Power PCB