

尺寸: 105x148mm材质 :80g书纸 单黑印刷 工艺 :骑马钉

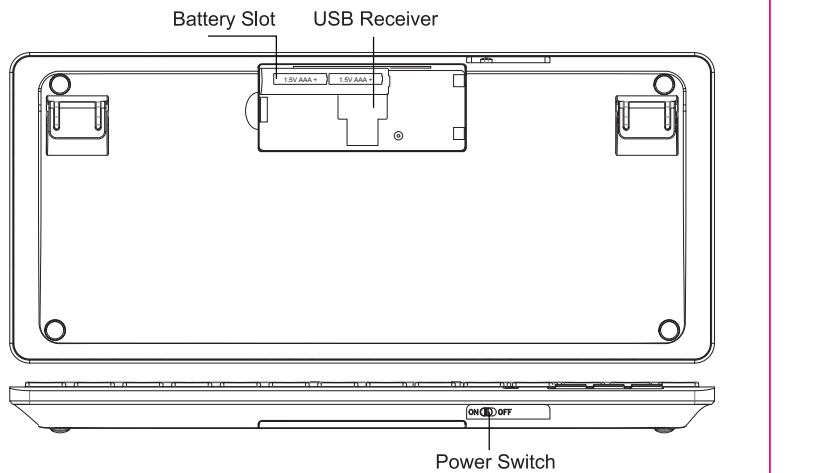
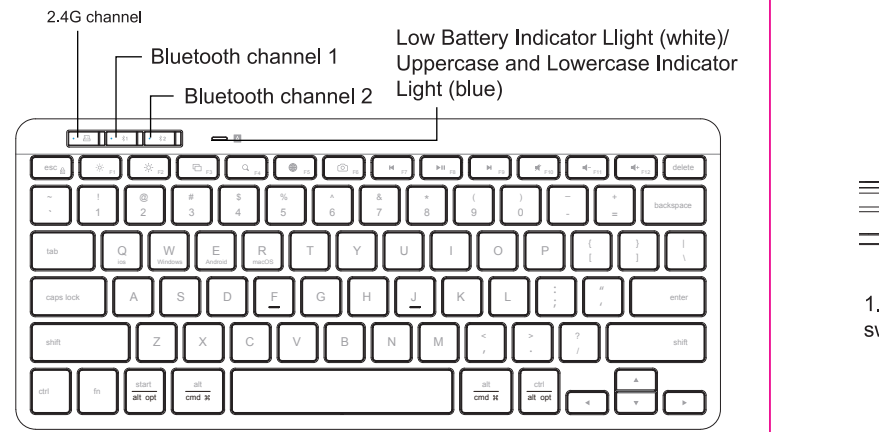
EN

2.4G + Bluetooth + Bluetooth Wireless keyboard User Manual

KD8017

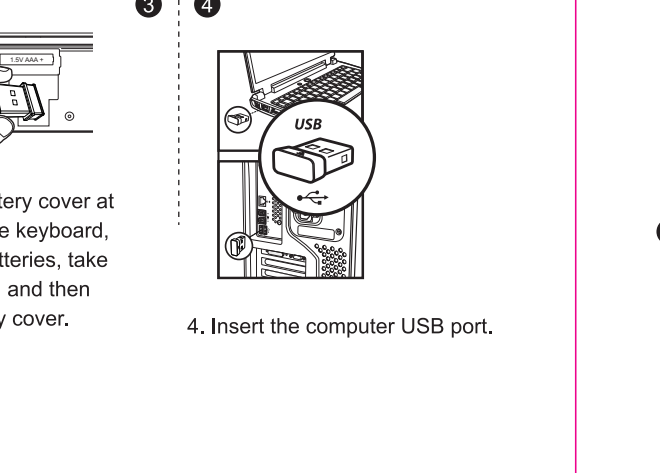
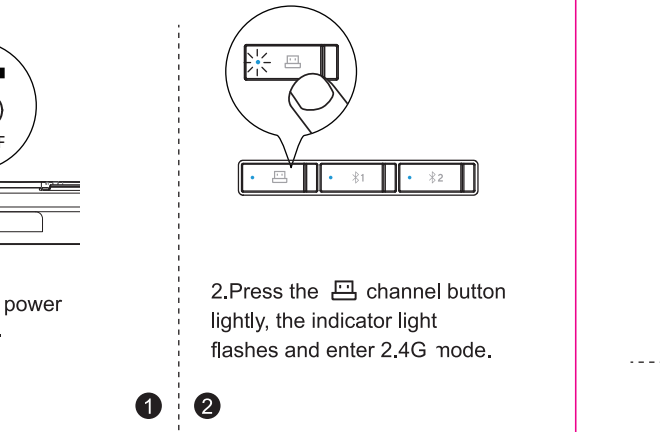
01

Product Function



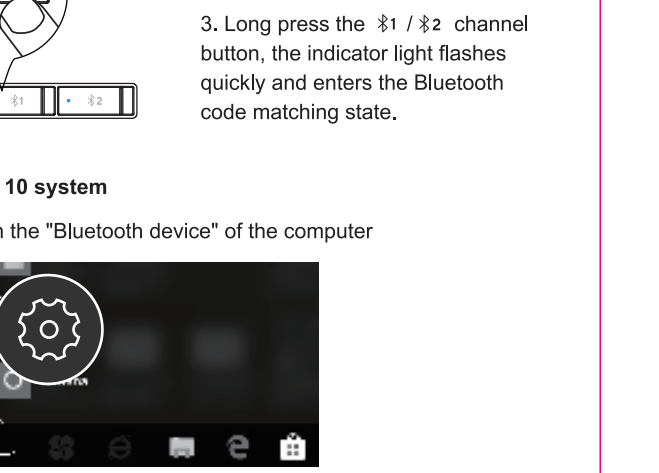
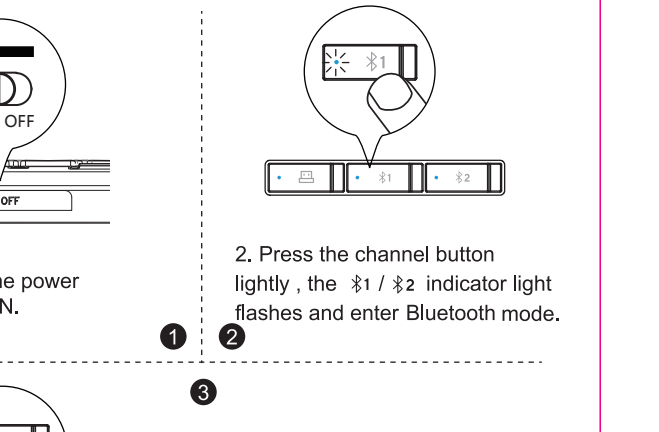
02

2.4G Connection Mode



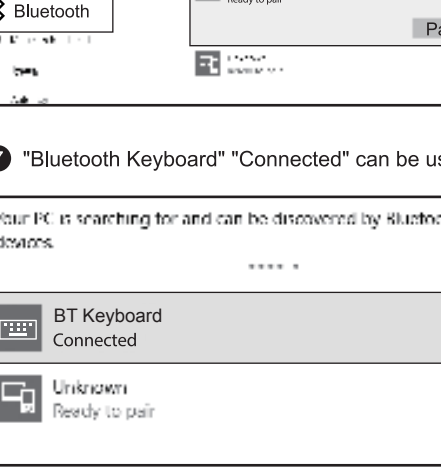
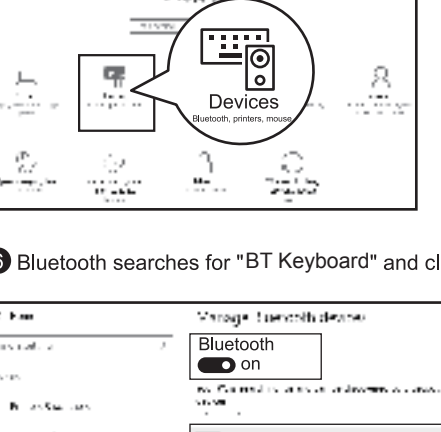
03

Bluetooth Connection Mode



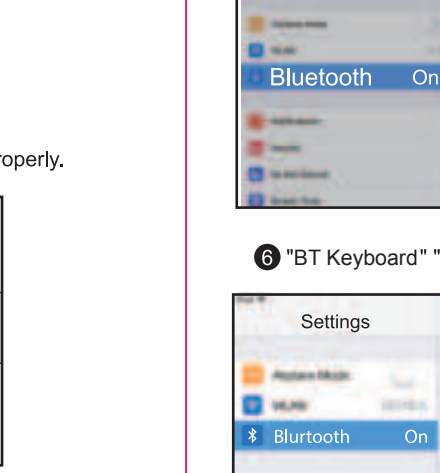
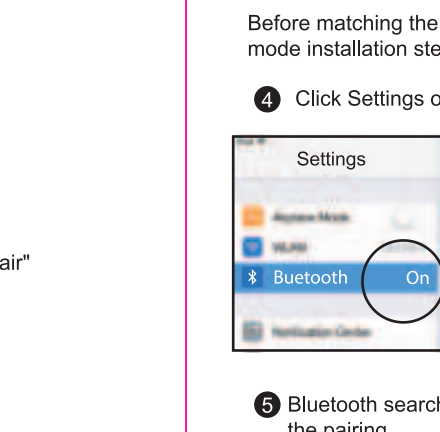
04

5 Click "Add or Remove Bluetooth Device"



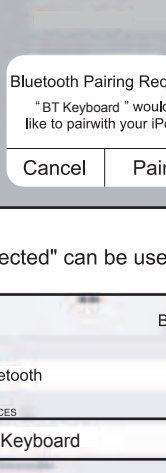
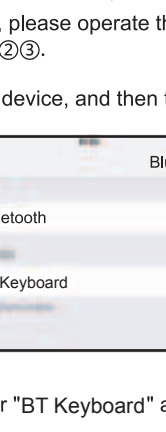
05

6 Bluetooth searches for "BT Keyboard" and click "Pair"



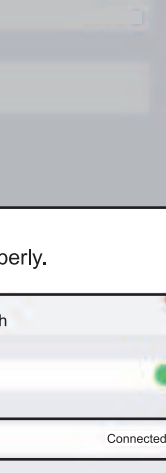
06

7 "Bluetooth Keyboard" "Connected" can be used properly.



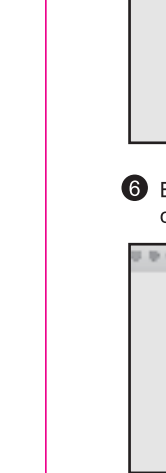
07

8 "BT Keyboard" "Connected" can be used properly.



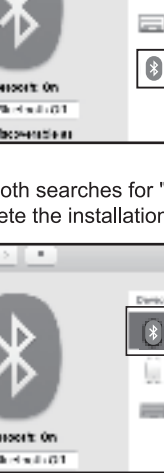
08

9 "BT Keyboard" "Connected" can be used properly.



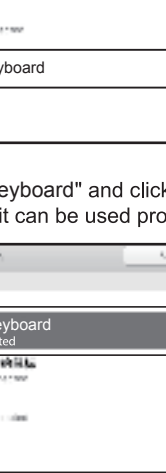
09

10 "BT Keyboard" "Connected" can be used properly.



10

11 "BT Keyboard" "Connected" can be used properly.



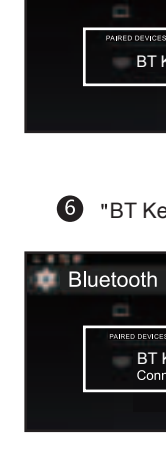
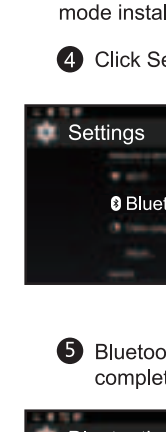
11

12 "BT Keyboard" "Connected" can be used properly.



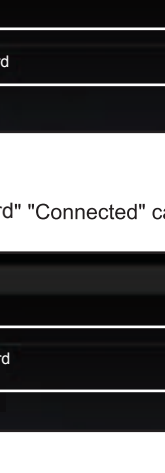
12

13 "BT Keyboard" "Connected" can be used properly.



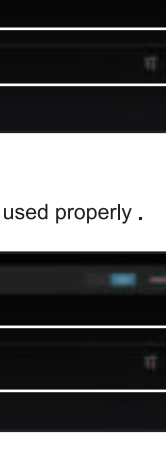
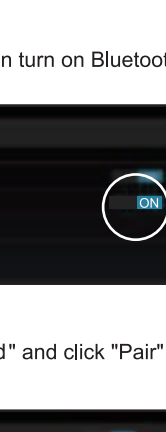
13

14 "BT Keyboard" "Connected" can be used properly.



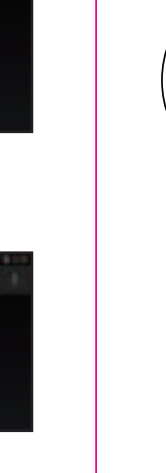
14

15 "BT Keyboard" "Connected" can be used properly.



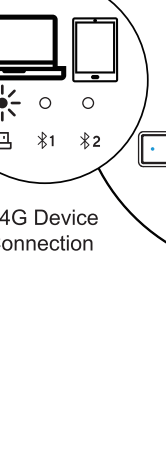
15

16 "BT Keyboard" "Connected" can be used properly.



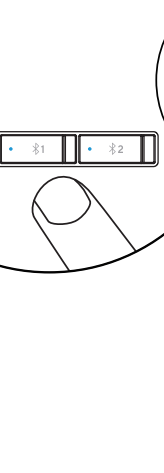
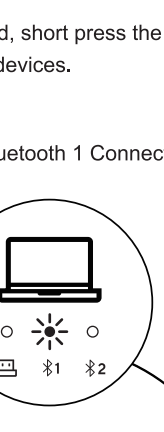
16

17 "BT Keyboard" "Connected" can be used properly.



17

18 "BT Keyboard" "Connected" can be used properly.



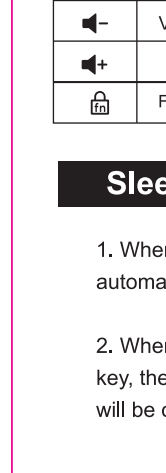
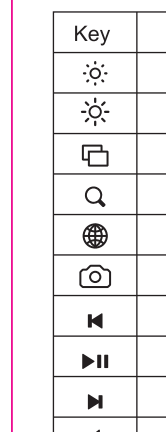
18

19 "BT Keyboard" "Connected" can be used properly.



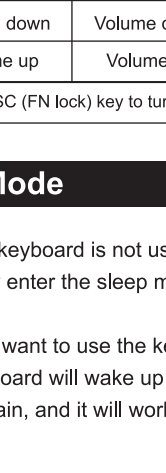
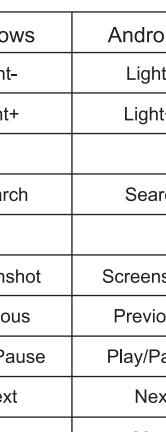
19

20 "BT Keyboard" "Connected" can be used properly.



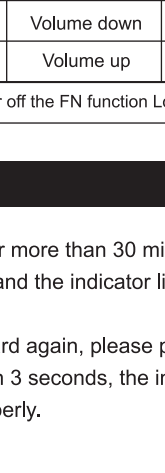
20

21 "BT Keyboard" "Connected" can be used properly.



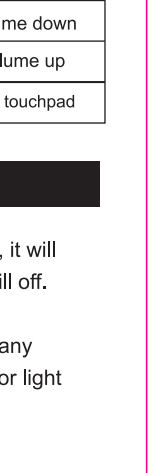
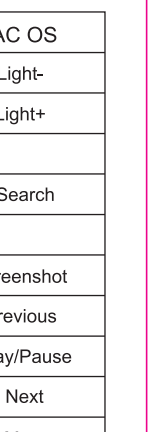
21

22 "BT Keyboard" "Connected" can be used properly.



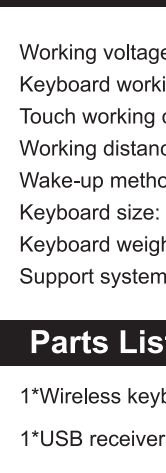
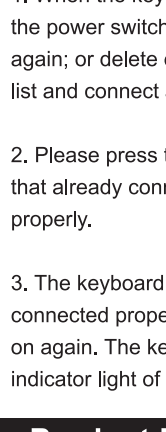
22

23 "BT Keyboard" "Connected" can be used properly.



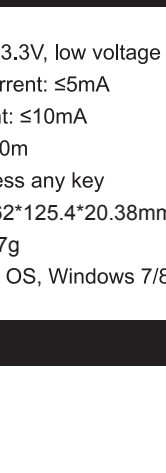
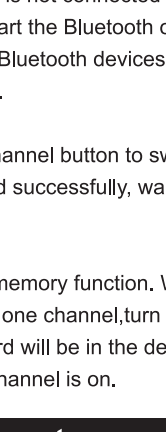
23

24 "BT Keyboard" "Connected" can be used properly.



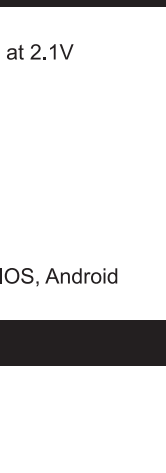
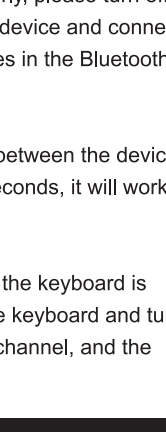
24

25 "BT Keyboard" "Connected" can be used properly.



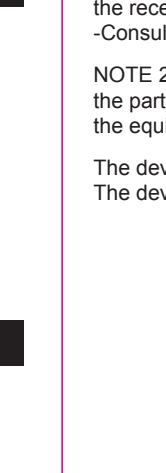
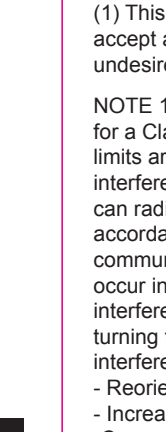
25

26 "BT Keyboard" "Connected" can be used properly.



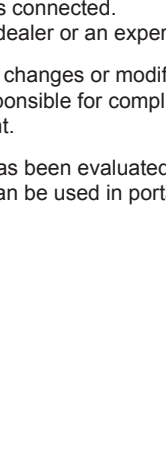
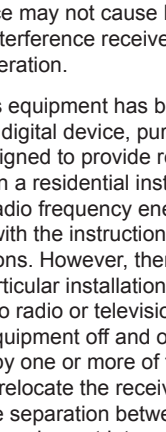
26

27 "BT Keyboard" "Connected" can be used properly.



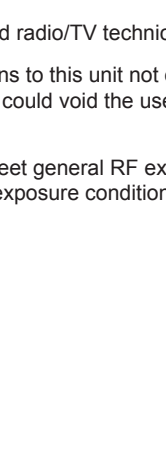
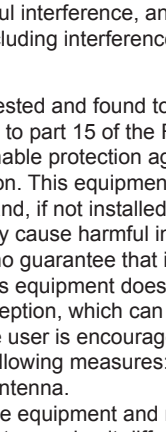
27

28 "BT Keyboard" "Connected" can be used properly.



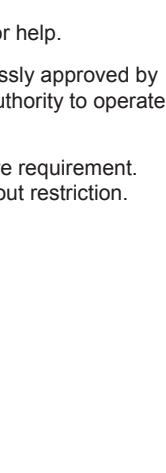
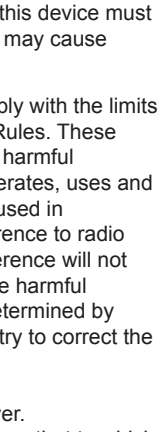
28

29 "BT Keyboard" "Connected" can be used properly.



29

30 "BT Keyboard" "Connected" can be used properly.



30

31 "BT Keyboard" "Connected" can be used properly.



31

32 "BT Keyboard" "Connected" can be used properly.



32

33 "BT Keyboard" "Connected" can be used properly.



33

34 "BT Keyboard" "Connected" can be used properly.



34

35 "BT Keyboard" "Connected" can be used properly.



35

36 "BT Keyboard" "Connected" can be used properly.



36

37 "BT Keyboard" "Connected" can be used properly.



37

38 "BT Keyboard" "Connected" can be used properly.



38

39 "BT Keyboard" "Connected" can be used properly.



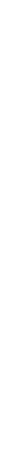
39

40 "BT Keyboard" "Connected" can be used properly.



40

41 "BT Keyboard" "Connected" can be used properly.



41

42 "BT Keyboard" "Connected" can be used properly.



42

43 "BT Keyboard" "Connected" can be used properly.



43

44 "BT Keyboard" "Connected" can be used properly.



44

45 "BT Keyboard" "Connected" can be used properly.



45

46 "BT Keyboard" "Connected" can be used properly.



46

47 "BT Keyboard" "Connected" can be used properly.



47

48 "BT Keyboard" "Connected" can be used properly.



48

49 "BT Keyboard" "Connected" can be used properly.



49

50 "BT Keyboard" "Connected" can be used properly.



50

51 "BT Keyboard" "Connected" can be used properly.



51

52 "BT Keyboard" "Connected" can be used properly.



52

53 "BT Keyboard" "Connected" can be used properly.



53

54 "BT Keyboard" "Connected" can be used properly.



54

55 "BT Keyboard" "Connected" can be used properly.



55

56 "BT Keyboard" "Connected" can be used properly.



56

57 "BT Keyboard" "Connected" can be used properly.



57

58 "BT Keyboard" "Connected" can be used properly.



58

59 "BT Keyboard" "Connected" can be used properly.



59

60 "BT Keyboard" "Connected" can be used properly.



60

61 "BT Keyboard" "Connected" can be used properly.



61

62 "BT Keyboard" "Connected" can be used properly.



62

63 "BT Keyboard" "Connected" can be used properly.



63

64 "BT Keyboard" "Connected" can be used properly.

