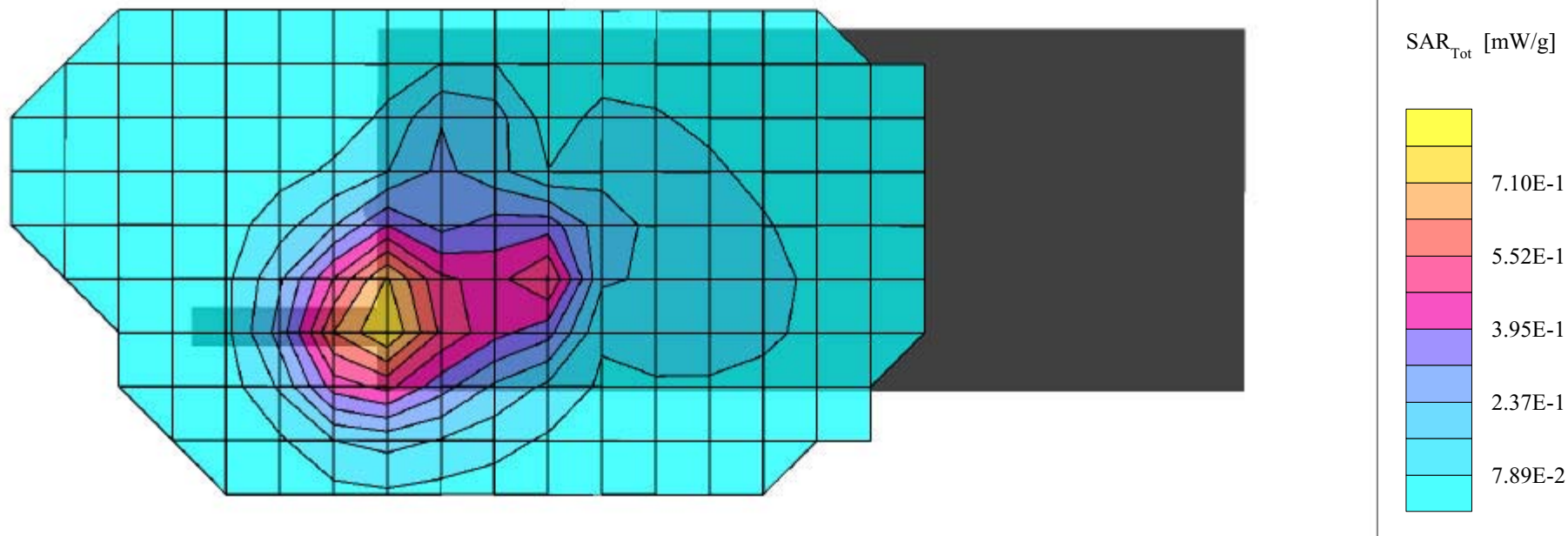


APPENDIX A - SAR MEASUREMENT DATA

Itronix Corporation FCC ID: KBCIX100AC750

SAM Phantom; Flat Section; Position: (270°,90°)
 Probe: ET3DV6 - SN1387; ConvF(4.90,4.90,4.90); Crest factor: 2.0
 1900 MHz Muscle: $\sigma = 1.51$ mho/m $\epsilon_r = 51.0$ $\rho = 1.00$ g/cm³
 Coarse: Dx = 15.0, Dy = 15.0, Dz = 10.0
 Cube 5x5x7; Powerdrift: -0.10 dB
 SAR (1g): 0.640 mW/g, SAR (10g): 0.407 mW/g

Body SAR - Back of Handheld PC - Alpha-numeric Keypad Unit
 0.0 cm Separation Distance from Back of Handheld PC to Planar Phantom
 IX100 Rugged Handheld PC with Sierra Wireless AirCard 750 PCS GPRS Modem Card
 with 1/4 Wave Helix Antenna & 7.4V Lithium-ion Battery
 PCS GPRS Mode
 Channel 661 [1880.00 MHz]
 Conducted Power: 28.1 dBm
 Ambient Temp: 23.9°C; Fluid Temp: 23.5°C
 Date Tested: June 11, 2003



Itronix Corporation FCC ID: KBCIX100AC750

SAM Phantom; Flat Section; Position: (270°,90°)

Probe: ET3DV6 - SN1387; ConvF(4.90,4.90,4.90); Crest factor: 2.0

1900 MHz Muscle: $\sigma = 1.51$ mho/m $\epsilon_r = 51.0$ $\rho = 1.00$ g/cm³

Coarse: Dx = 15.0, Dy = 15.0, Dz = 10.0

Second Coarse Scan to Show Lower Section of Back Side

Body SAR - Back of Handheld PC - Alpha-numeric Keypad Unit

0.0 cm Separation Distance from Back of Handheld PC to Planar Phantom

IX100 Rugged Handheld PC with Sierra Wireless AirCard 750 PCS GPRS Modem Card

with 1/4 Wave Helix Antenna & 7.4V Lithium-ion Battery

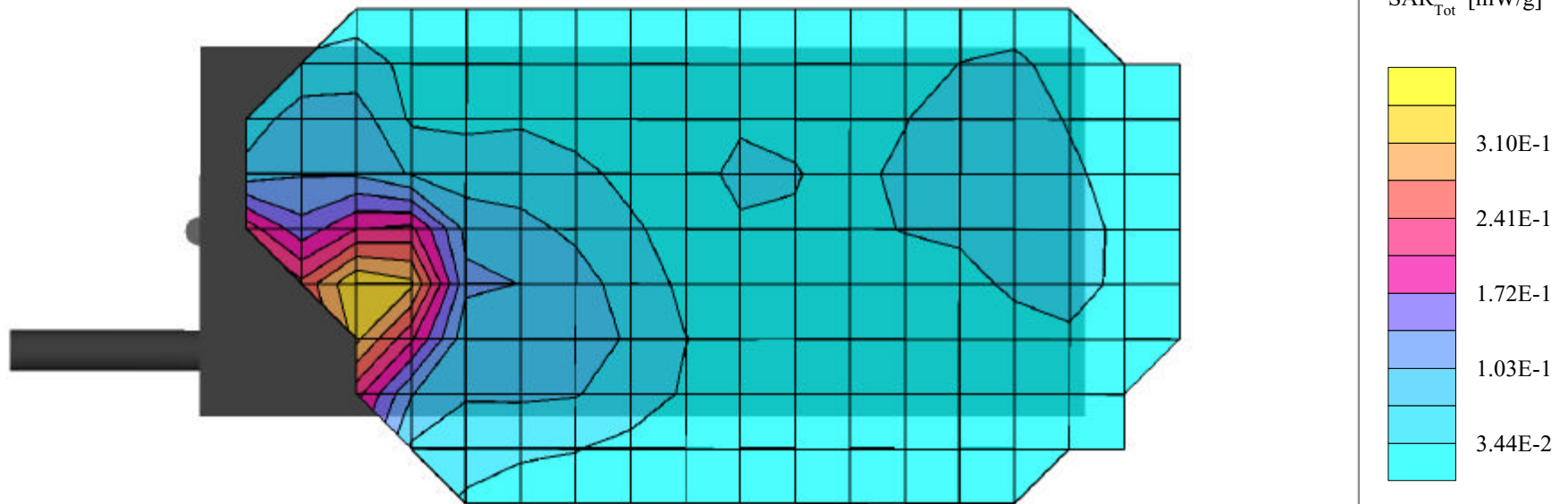
PCS GPRS Mode

Channel 661 [1880.00 MHz]

Conducted Power: 28.1 dBm

Ambient Temp: 23.9°C; Fluid Temp: 23.5°C

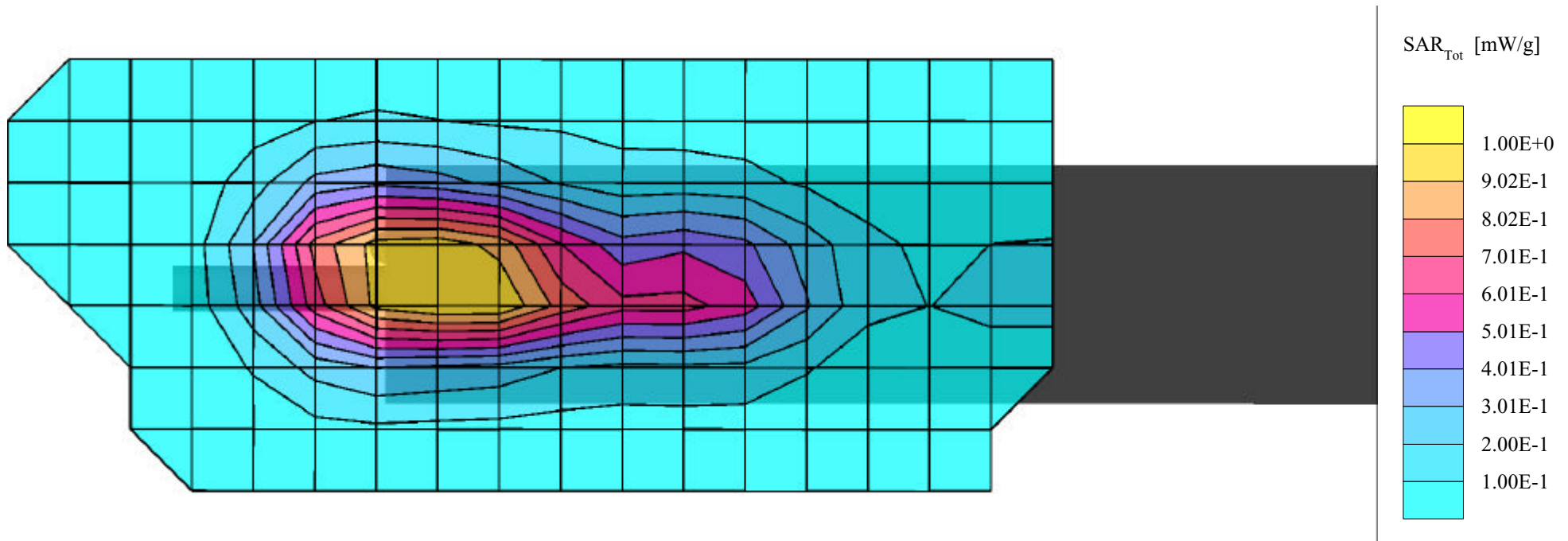
Date Tested: June 11, 2003



Itronix Corporation FCC ID: KBCIX100AC750

SAM Phantom; Flat Section; Position: (270°,90°)
 Probe: ET3DV6 - SN1387; ConvF(4.90,4.90,4.90); Crest factor: 2.0
 1900 MHz Muscle: $\sigma = 1.51$ mho/m $\epsilon_r = 51.0$ $\rho = 1.00$ g/cm³
 Coarse: Dx = 15.0, Dy = 15.0, Dz = 10.0
 Cube 5x5x7; Powerdrift: -0.09 dB
 SAR (1g): 0.903 mW/g, SAR (10g): 0.558 mW/g

Body SAR - Antenna Side (Right Side) of Handheld PC - Alpha-numeric Keypad Unit
 0.5 cm Separation Distance from Antenna Side of Handheld PC to Planar Phantom
 IX100 Rugged Handheld PC with Sierra Wireless AirCard 750 PCS GPRS Modem Card
 with 1/4 Wave Helix Antenna & 7.4V Lithium-ion Battery
 PCS GPRS Mode
 Channel 661 [1880.00 MHz]
 Conducted Power: 28.1 dBm
 Ambient Temp: 23.9°C; Fluid Temp: 23.5°C
 Date Tested: June 11, 2003



Itronix Corporation FCC ID: KBCIX100AC750

SAM Phantom; Flat Section; Position: (270°,90°)

Probe: ET3DV6 - SN1387; ConvF(4.90,4.90,4.90); Crest factor: 2.0

1900 MHz Muscle: $\sigma = 1.51$ mho/m $\epsilon_r = 51.0$ $\rho = 1.00$ g/cm³

Coarse: Dx = 15.0, Dy = 15.0, Dz = 10.0

Cube 5x5x7; Powerdrift: -0.17 dB

SAR (1g): 1.02 mW/g, SAR (10g): 0.628 mW/g

Body SAR - Antenna Side (Right Side) of Handheld PC - Alpha-numeric Keypad Unit

0.5 cm Separation Distance from Antenna Side of Handheld PC to Planar Phantom

IX100 Rugged Handheld PC with Sierra Wireless AirCard 750 PCS GPRS Modem Card

with 1/4 Wave Helix Antenna & 7.4V Lithium-ion Battery

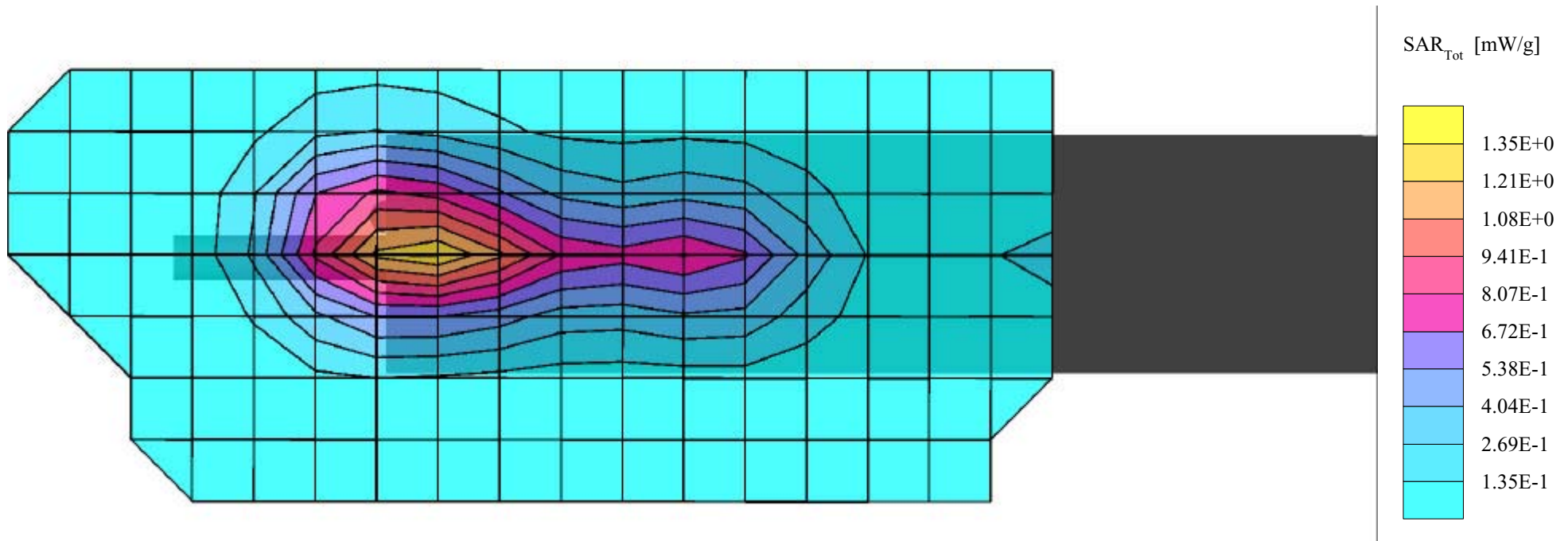
PCS GPRS Mode

Channel 512 [1850.20 MHz]

Conducted Power: 28.0 dBm

Ambient Temp: 23.9°C; Fluid Temp: 23.5°C

Date Tested: June 11, 2003



Itronix Corporation FCC ID: KBCIX100AC750

SAM Phantom; Flat Section; Position: (270°,90°)

Probe: ET3DV6 - SN1387; ConvF(4.90,4.90,4.90); Crest factor: 2.0

1900 MHz Muscle: $\sigma = 1.51$ mho/m $\epsilon_r = 51.0$ $\rho = 1.00$ g/cm³

Coarse: Dx = 15.0, Dy = 15.0, Dz = 10.0

Cube 5x5x7; Powerdrift: -0.11 dB

SAR (1g): 1.13 mW/g, SAR (10g): 0.682 mW/g

Body SAR - Antenna Side (Right Side) of Handheld PC - Alpha-numeric Keypad Unit

0.5 cm Separation Distance from Antenna Side of Handheld PC to Planar Phantom

IX100 Rugged Handheld PC with Sierra Wireless AirCard 750 PCS GPRS Modem Card

with 1/4 Wave Helix Antenna & 7.4V Lithium-ion Battery

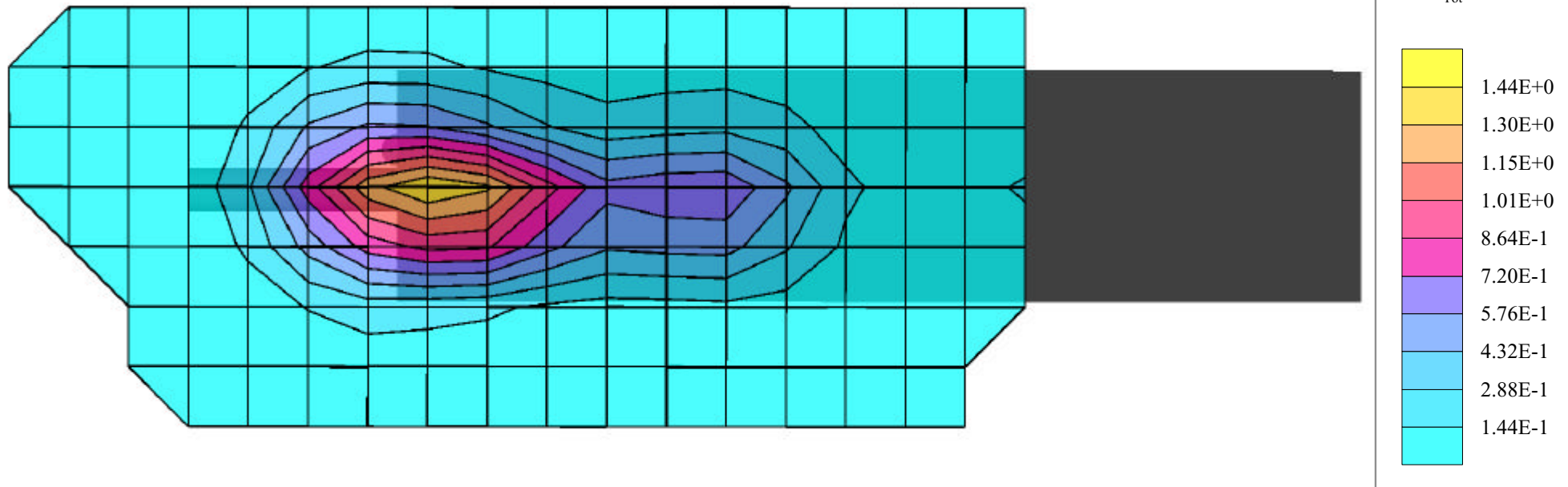
PCS GPRS Mode

Channel 810 [1909.80 MHz]

Conducted Power: 27.9 dBm

Ambient Temp: 23.9°C; Fluid Temp: 23.5°C

Date Tested: June 11, 2003

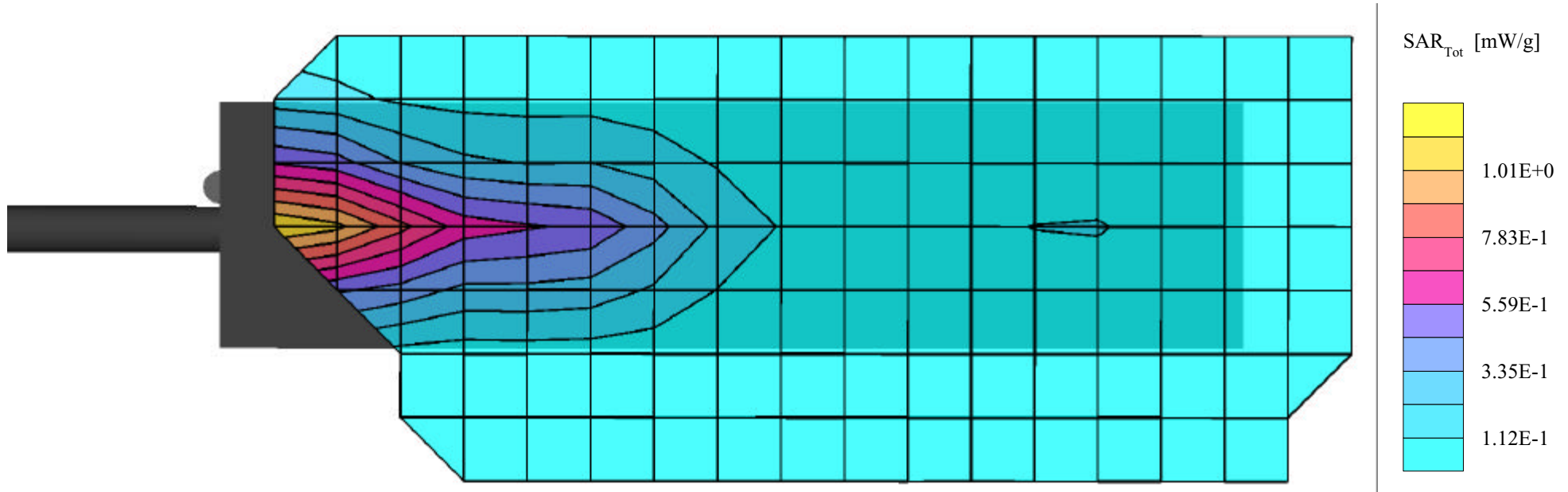


Itronix Corporation FCC ID: KBCIX100AC750

SAM Phantom; Flat Section; Position: (270°,90°)
 Probe: ET3DV6 - SN1387; ConvF(4.90,4.90,4.90); Crest factor: 2.0
 1900 MHz Muscle: $\sigma = 1.51 \text{ mho/m}$ $\epsilon_r = 51.0$ $\rho = 1.00 \text{ g/cm}^3$
 Coarse: Dx = 15.0, Dy = 15.0, Dz = 10.0

Second Coarse Scan to Show Lower Section of Right Side

Body SAR - Antenna Side (Right Side) of Handheld PC - Alpha-numeric Keypad Unit
 0.5 cm Separation Distance from Antenna Side of Handheld PC to Planar Phantom
 IX100 Rugged Handheld PC with Sierra Wireless AirCard 750 PCS GPRS Modem Card
 with 1/4 Wave Helix Antenna & 7.4V Lithium-ion Battery
 PCS GPRS Mode
 Channel 810 [1909.80 MHz]
 Conducted Power: 27.9 dBm
 Ambient Temp: 23.9°C; Fluid Temp: 23.5°C
 Date Tested: June 11, 2003



Itronix Corporation FCC ID: KBCIX100AC750

SAM Phantom

Probe: ET3DV6 - SN1387; ConvF(4.90,4.90,4.90); Crest factor: 2.0

1900 MHz Muscle: $\sigma = 1.51$ mho/m $\epsilon_r = 51.0$ $\rho = 1.00$ g/cm³

Z-Axis Extrapolation at Peak SAR Location

Body SAR - Antenna Side (Right Side) of Handheld PC - Alpha-numeric Keypad Unit

0.5 cm Separation Distance from Antenna Side of Handheld PC to Planar Phantom

IX100 Rugged Handheld PC with Sierra Wireless AirCard 750 PCS GPRS Modem Card

with 1/4 Wave Helix Antenna & 7.4V Lithium-ion Battery

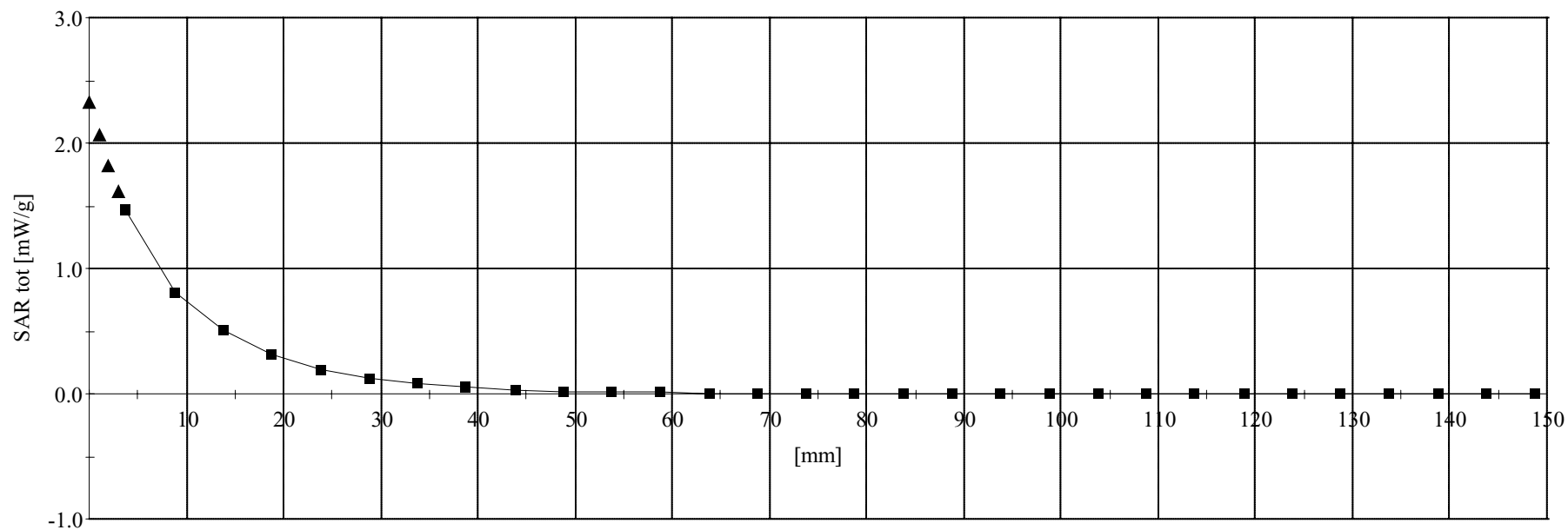
PCS GPRS Mode

Channel 810 [1909.80 MHz]

Conducted Power: 27.9 dBm

Ambient Temp: 23.9°C; Fluid Temp: 23.5°C

Date Tested: June 11, 2003



Itronix Corporation FCC ID: KBCIX100AC750

SAM Phantom; Flat Section; Position: (270°,90°)

Probe: ET3DV6 - SN1387; ConvF(4.90,4.90,4.90); Crest factor: 2.0

1900 MHz Muscle: $\sigma = 1.51$ mho/m $\epsilon_r = 51.0$ $\rho = 1.00$ g/cm³

Coarse: Dx = 15.0, Dy = 15.0, Dz = 10.0

Cube 5x5x7; Powerdrift: -0.15 dB

SAR (1g): 0.814 mW/g, SAR (10g): 0.494 mW/g

Body SAR - Antenna Side (Right Side) of Handheld PC - Numeric Keypad Unit
0.5 cm Separation Distance from Antenna Side of Handheld PC to Planar Phantom
IX100 Rugged Handheld PC with Sierra Wireless AirCard 750 PCS GPRS Modem Card
with 1/4 Wave Helix Antenna & 7.4V Lithium-ion Battery

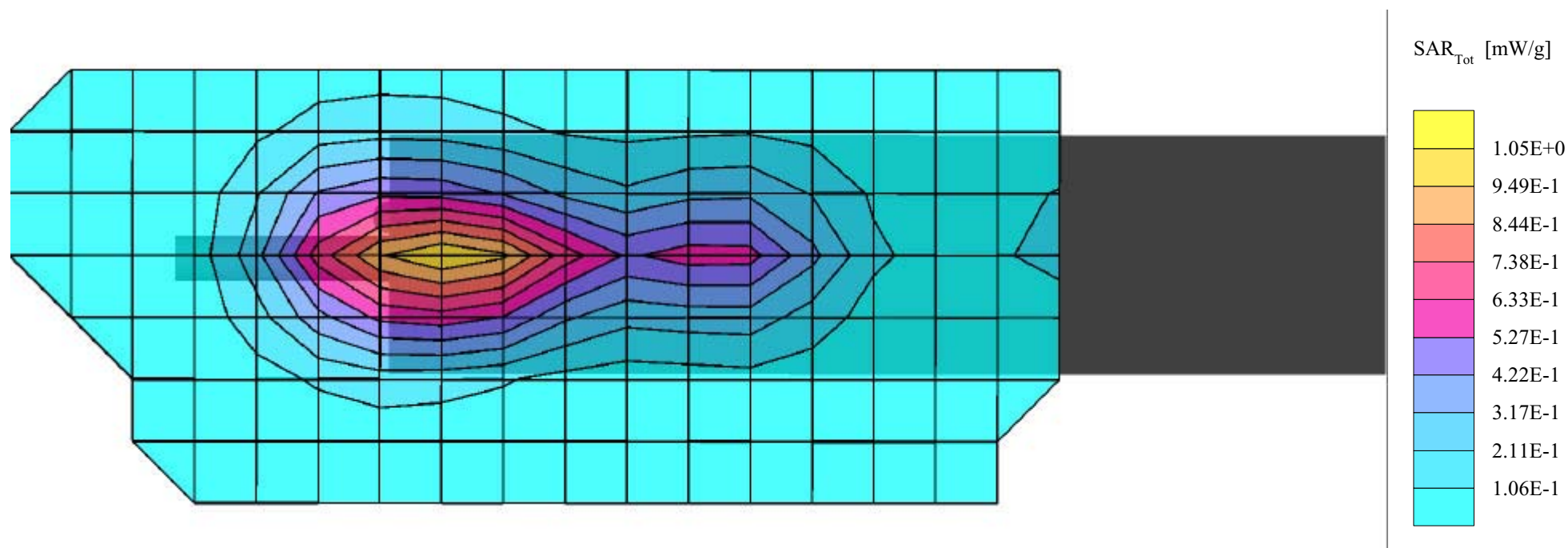
PCS GPRS Mode

Channel 661 [1880.00 MHz]

Conducted Power: 28.1 dBm

Ambient Temp: 23.9°C; Fluid Temp: 23.5°C

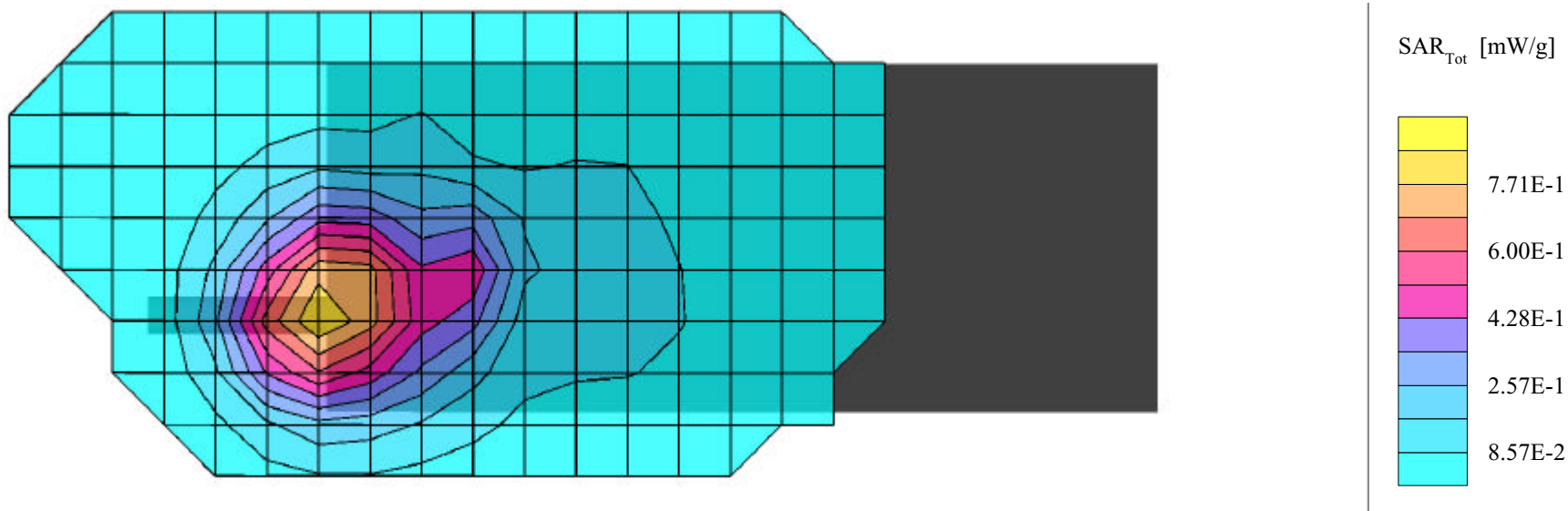
Date Tested: June 11, 2003



Itronix Corporation FCC ID: KBCIX100AC750

SAM Phantom; Flat Section; Position: (270°,90°)
 Probe: ET3DV6 - SN1387; ConvF(4.90,4.90,4.90); Crest factor: 2.0
 1900 MHz Muscle: $\sigma = 1.51 \text{ mho/m}$ $\epsilon_r = 51.0$ $\rho = 1.00 \text{ g/cm}^3$
 Coarse: Dx = 15.0, Dy = 15.0, Dz = 10.0
 Cube 5x5x7; Powerdrift: -0.11 dB
 SAR (1g): 0.672 mW/g, SAR (10g): 0.434 mW/g

Body SAR - Back Side of Handheld PC - Alpha-numeric Keypad Unit
 with Carry Case P/N: 54-0644-001 and JABRA Ear-microphone accessories
 0.0 cm Separation Distance from Front of Carry Case to Planar Phantom
 (Back Side of Handheld PC Facing Front of Carry Case)
 IX100 Rugged Handheld PC with Sierra Wireless AirCard 750 PCS GPRS Modem Card
 with 1/4 Wave Helix Antenna & 7.4V Lithium-ion Battery
 PCS GPRS Mode
 Channel 661 [1880.00 MHz]
 Conducted Power: 28.1 dBm
 Ambient Temp: 23.9°C; Fluid Temp: 23.5°C
 Date Tested: June 11, 2003

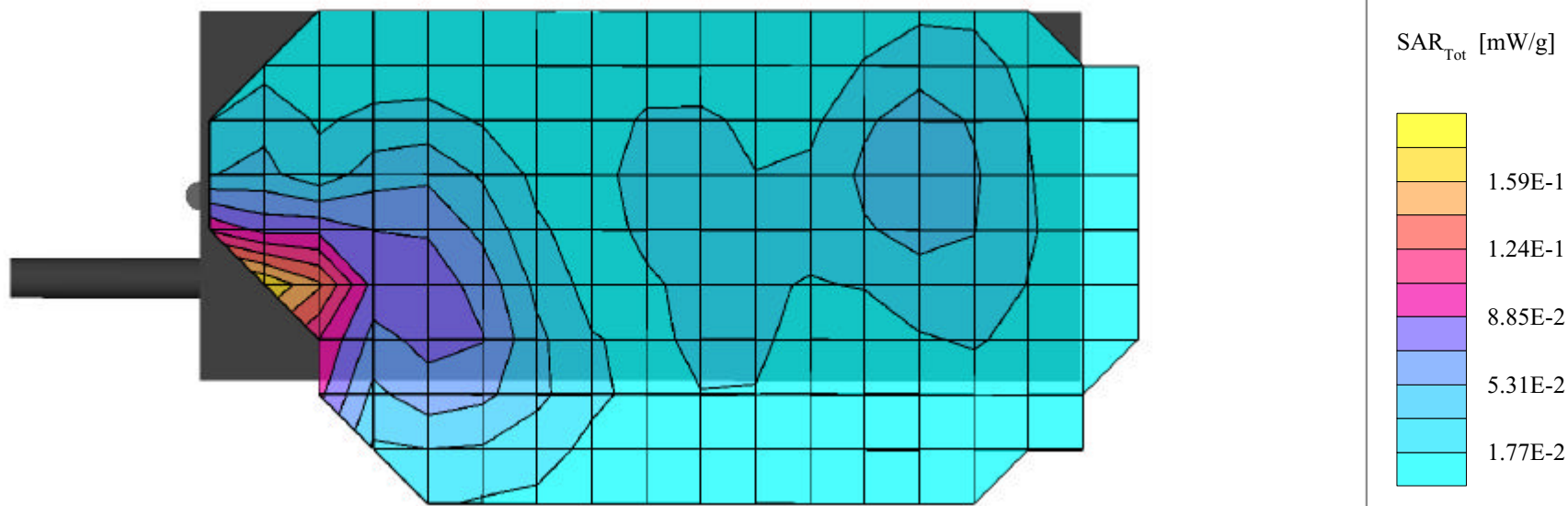


Itronix Corporation FCC ID: KBCIX100AC750

SAM Phantom; Flat Section; Position: (270°,90°)
 Probe: ET3DV6 - SN1387; ConvF(4.90,4.90,4.90); Crest factor: 2.0
 1900 MHz Muscle: $\sigma = 1.51 \text{ mho/m}$ $\epsilon_r = 51.0$ $\rho = 1.00 \text{ g/cm}^3$
 Coarse: Dx = 15.0, Dy = 15.0, Dz = 10.0

Second Coarse Scan to Show Lower Section of Back Side

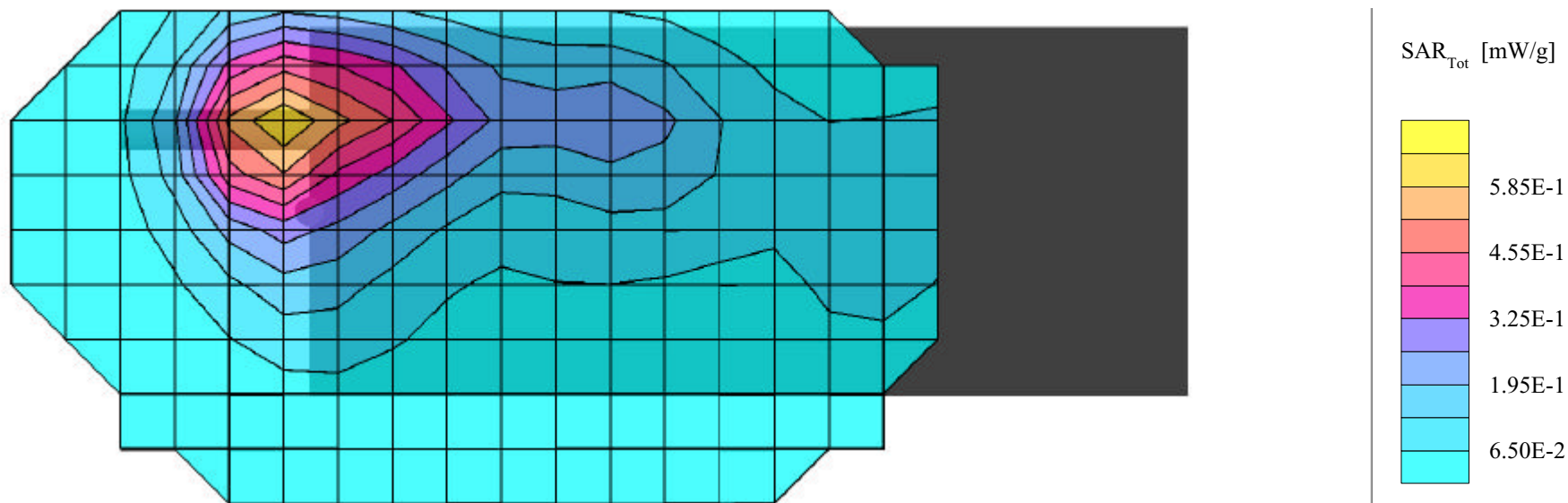
Body SAR - Back Side of Handheld PC - Alpha-numeric Keypad Unit
 with Carry Case P/N: 54-0644-001 and JABRA Ear-microphone accessories
 0.0 cm Separation Distance from Front of Carry Case to Planar Phantom
 (Back Side of Handheld PC Facing Front of Carry Case)
 IX100 Rugged Handheld PC with Sierra Wireless AirCard 750 PCS GPRS Modem Card
 with 1/4 Wave Helix Antenna & 7.4V Lithium-ion Battery
 PCS GPRS Mode
 Channel 661 [1880.00 MHz]
 Conducted Power: 28.1 dBm
 Ambient Temp: 23.9°C; Fluid Temp: 23.5°C
 Date Tested: June 11, 2003



Itronix Corporation FCC ID: KBCIX100AC750

SAM Phantom; Flat Section; Position: (90°,270°)
 Probe: ET3DV6 - SN1387; ConvF(4.90,4.90,4.90); Crest factor: 2.0
 1900 MHz Muscle: $\sigma = 1.51 \text{ mho/m}$ $\epsilon_r = 51.0$ $\rho = 1.00 \text{ g/cm}^3$
 Coarse: Dx = 15.0, Dy = 15.0, Dz = 10.0
 Cube 5x5x7; Powerdrift: -0.10 dB
 SAR (1g): 0.508 mW/g, SAR (10g): 0.314 mW/g

Body SAR - LCD Side (Front Side) of Handheld PC - Alphanumeric Keyboard Unit
 with Carry Case P/N: 54-0644-001 and JABRA Ear-microphone accessories
 0.0 cm Separation Distance from Front of Carry Case to Planar Phantom
 (Front Side of Handheld PC Facing Front of Carry Case)
 IX100 Rugged Handheld PC with Sierra Wireless AirCard 750 PCS GPRS Modem Card
 with 1/4 Wave Helix Antenna & 7.4V Lithium-ion Battery
 PCS GPRS Mode
 Channel 661 [1880.00 MHz]
 Conducted Power: 28.1 dBm
 Ambient Temp: 23.9°C; Fluid Temp: 23.5°C
 Date Tested: June 11, 2003



Itronix Corporation FCC ID: KBCIX100AC750

SAM Phantom; Flat Section; Position: (90°,270°)

Probe: ET3DV6 - SN1387; ConvF(4.90,4.90,4.90); Crest factor: 2.0

1900 MHz Muscle: $\sigma = 1.51$ mho/m $\epsilon_r = 51.0$ $\rho = 1.00$ g/cm³

Coarse: Dx = 15.0, Dy = 15.0, Dz = 10.0

Second Coarse Scan to Show Lower Section of Front Side

Body SAR - LCD Side (Front Side) of Handheld PC - Alphanumeric Keyboard Unit

with Carry Case P/N: 54-0644-001 and JABRA Ear-microphone accessories

0.0 cm Separation Distance from Front of Carry Case to Planar Phantom

(Front Side of Handheld PC Facing Front of Carry Case)

IX100 Rugged Handheld PC with Sierra Wireless AirCard 750 PCS GPRS Modem Card

with 1/4 Wave Helix Antenna & 7.4V Lithium-ion Battery

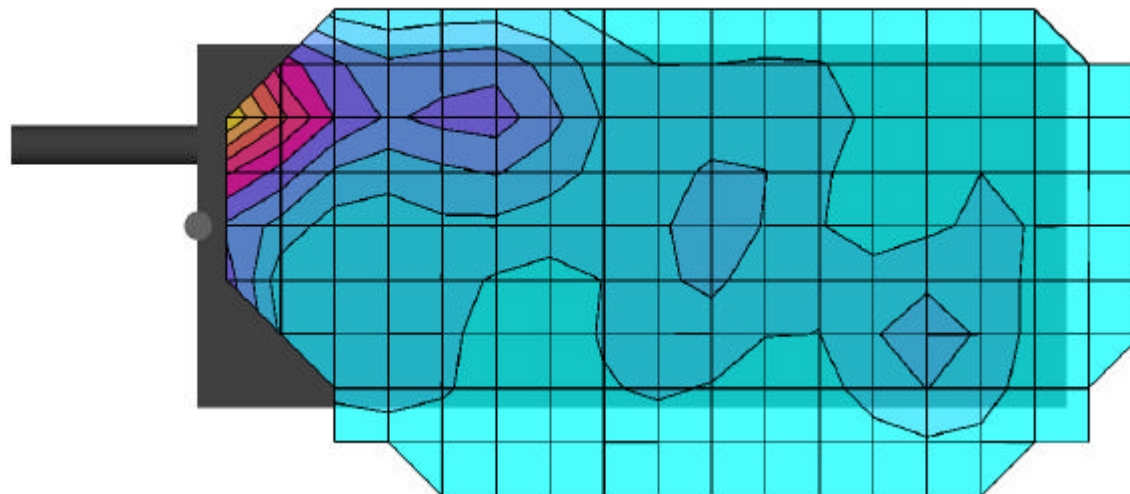
PCS GPRS Mode

Channel 661 [1880.00 MHz]

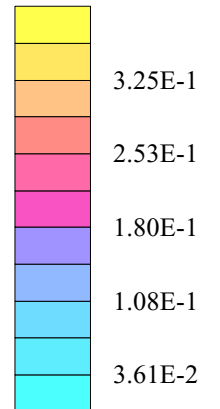
Conducted Power: 28.1 dBm

Ambient Temp: 23.9°C; Fluid Temp: 23.5°C

Date Tested: June 11, 2003



SAR_{Tot} [mW/g]



Itronix Corporation FCC ID: KBCIX100AC750

SAM Phantom; Flat Section; Position: (270°,90°)

Probe: ET3DV6 - SN1387; ConvF(4.90,4.90,4.90); Crest factor: 2.0

1900 MHz Muscle: $\sigma = 1.51$ mho/m $\epsilon_r = 51.0$ $\rho = 1.00$ g/cm³

Coarse: Dx = 15.0, Dy = 15.0, Dz = 10.0

Cube 5x5x7; Powerdrift: -0.06 dB

SAR (1g): 0.823 mW/g, SAR (10g): 0.509 mW/g

Body SAR - Antenna Side (Right Side) of Handheld PC - Alpha-numeric Keypad Unit

with Carry Case P/N: 54-0644-001 and JABRA Ear-microphone accessories

0.0 cm Separation Distance from Right Side of Carry Case to Planar Phantom

(Front Side of Handheld PC Facing Front of Carry Case)

IX100 Rugged Handheld PC with Sierra Wireless AirCard 750 PCS GPRS Modem Card

with 1/4 Wave Helix Antenna & 7.4V Lithium-ion Battery

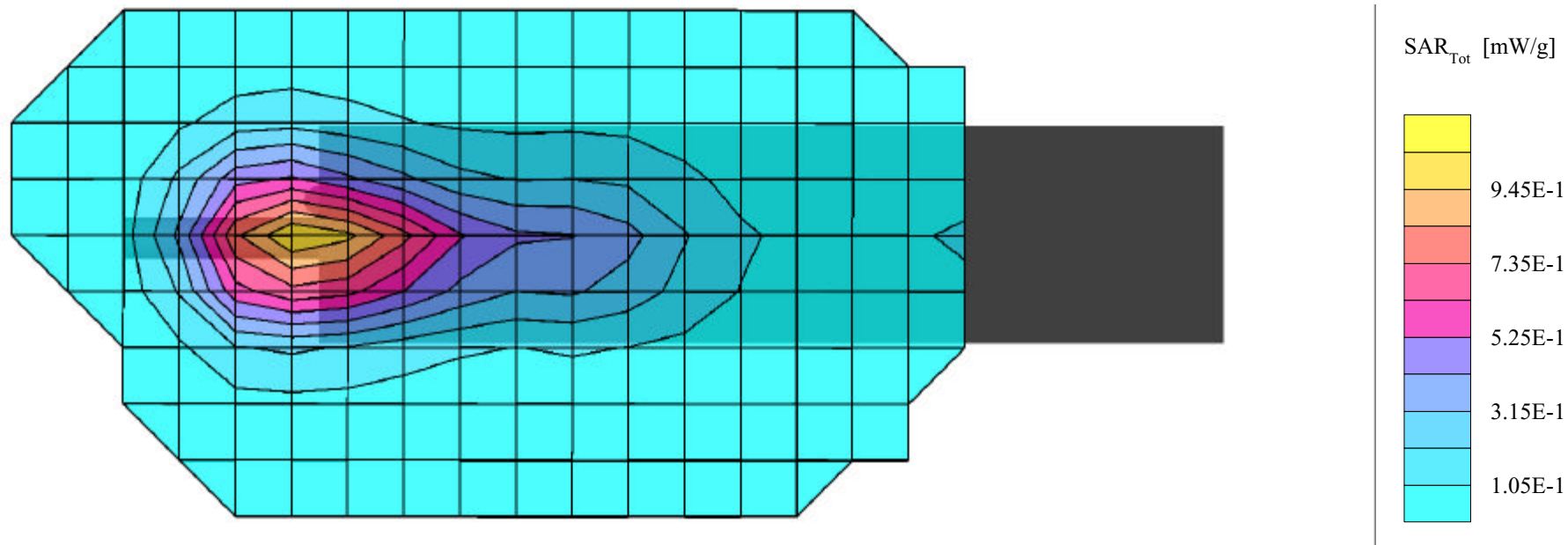
PCS GPRS Mode

Channel 661 [1880.00 MHz]

Conducted Power: 28.1 dBm

Ambient Temp: 23.9°C; Fluid Temp: 23.5°C

Date Tested: June 11, 2003



Itronix Corporation FCC ID: KBCIX100AC750

SAM Phantom; Flat Section; Position: (270°,90°)

Probe: ET3DV6 - SN1387; ConvF(4.90,4.90,4.90); Crest factor: 2.0

1900 MHz Muscle: $\sigma = 1.51 \text{ mho/m}$ $\epsilon_r = 51.0$ $\rho = 1.00 \text{ g/cm}^3$

Coarse: Dx = 15.0, Dy = 15.0, Dz = 10.0

Second Coarse Scan to Show Lower Section of Right Side

Body SAR - Antenna Side (Right Side) of Handheld PC - Alpha-numeric Keypad Unit

with Carry Case P/N: 54-0644-001 and JABRA Ear-microphone accessories

0.0 cm Separation Distance from Right Side of Carry Case to Planar Phantom

(Front Side of Handheld PC Facing Front of Carry Case)

IX100 Rugged Handheld PC with Sierra Wireless AirCard 750 PCS GPRS Modem Card

with 1/4 Wave Helix Antenna & 7.4V Lithium-ion Battery

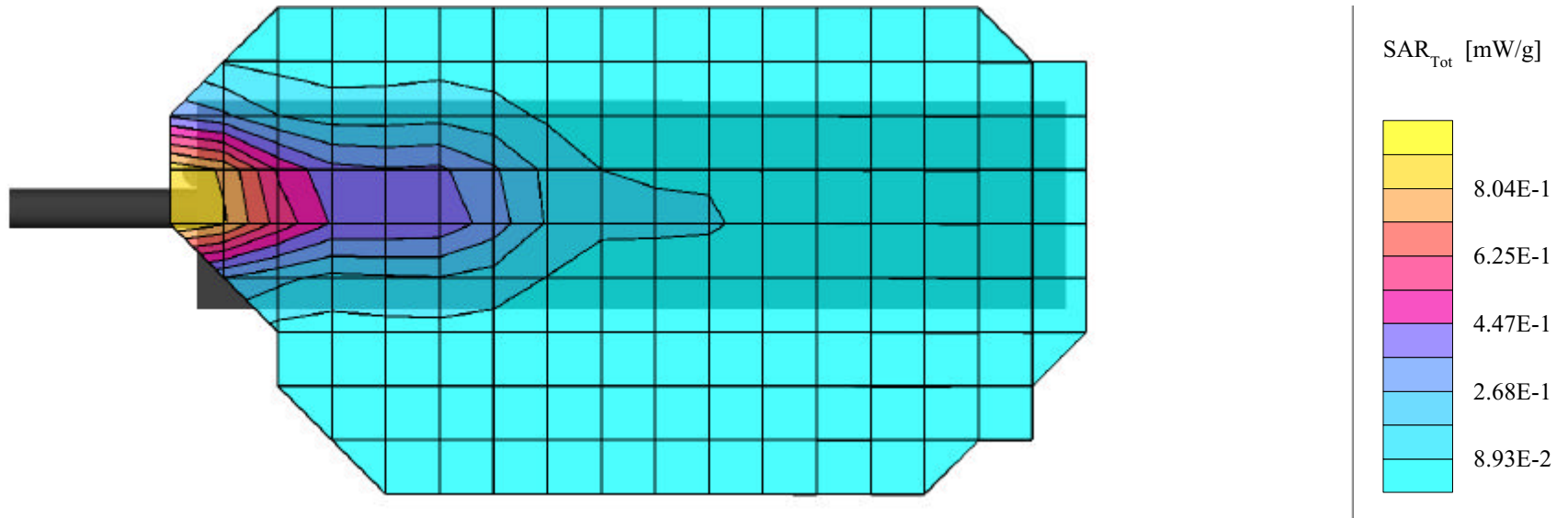
PCS GPRS Mode

Channel 661 [1880.00 MHz]

Conducted Power: 28.1 dBm

Ambient Temp: 23.9°C; Fluid Temp: 23.5°C

Date Tested: June 11, 2003



Itronix Corporation FCC ID: KBCIX100AC750

SAM Phantom; Flat Section; Position: (90°,270°)

Probe: ET3DV6 - SN1387; ConvF(4.90,4.90,4.90); Crest factor: 2.0

1900 MHz Muscle: $\sigma = 1.51$ mho/m $\epsilon_r = 51.0$ $\rho = 1.00$ g/cm³

Coarse: Dx = 15.0, Dy = 15.0, Dz = 10.0

Cube 5x5x7; Powerdrift: -0.17 dB

SAR (1g): 0.765 mW/g, SAR (10g): 0.469 mW/g

Body SAR - Antenna Side (Right Side) of Handheld PC - Alpha-numeric Keypad Unit

with Carry Case P/N: 54-0644-001 and JABRA Ear-microphone accessories

0.0 cm Separation Distance from Right Side of Carry Case to Planar Phantom

(Front Side of Handheld PC Facing Front of Carry Case)

IX100 Rugged Handheld PC with Sierra Wireless AirCard 750 PCS GPRS Modem Card

with 1/4 Wave Helix Antenna & 7.4V Lithium-ion Battery

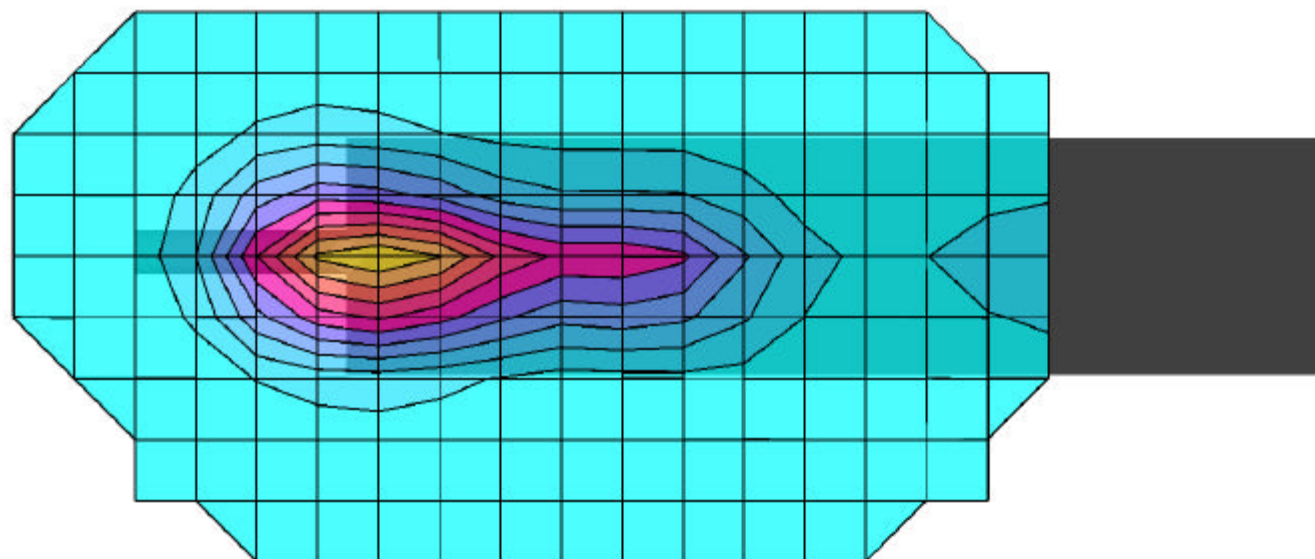
PCS GPRS Mode

Channel 512 [1850.20 MHz]

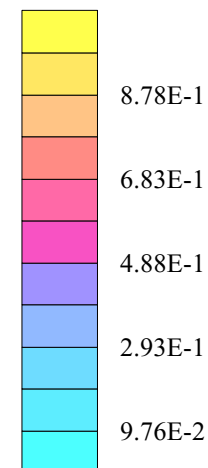
Conducted Power: 28.0 dBm

Ambient Temp: 23.9°C; Fluid Temp: 23.5°C

Date Tested: June 11, 2003



SAR_{Tot} [mW/g]



Itronix Corporation FCC ID: KBCIX100AC750

SAM Phantom; Flat Section; Position: (90°,270°)

Probe: ET3DV6 - SN1387; ConvF(4.90,4.90,4.90); Crest factor: 2.0

1900 MHz Muscle: $\sigma = 1.51$ mho/m $\epsilon_r = 51.0$ $\rho = 1.00$ g/cm³

Coarse: Dx = 15.0, Dy = 15.0, Dz = 10.0

Cube 5x5x7; Powerdrift: -0.12 dB

SAR (1g): 0.922 mW/g, SAR (10g): 0.562 mW/g

Body SAR - Antenna Side (Right Side) of Handheld PC - Alpha-numeric Keypad Unit

with Carry Case P/N: 54-0644-001 and JABRA Ear-microphone accessories

0.0 cm Separation Distance from Right Side of Carry Case to Planar Phantom

(Front Side of Handheld PC Facing Front of Carry Case)

IX100 Rugged Handheld PC with Sierra Wireless AirCard 750 PCS GPRS Modem Card

with 1/4 Wave Helix Antenna & 7.4V Lithium-ion Battery

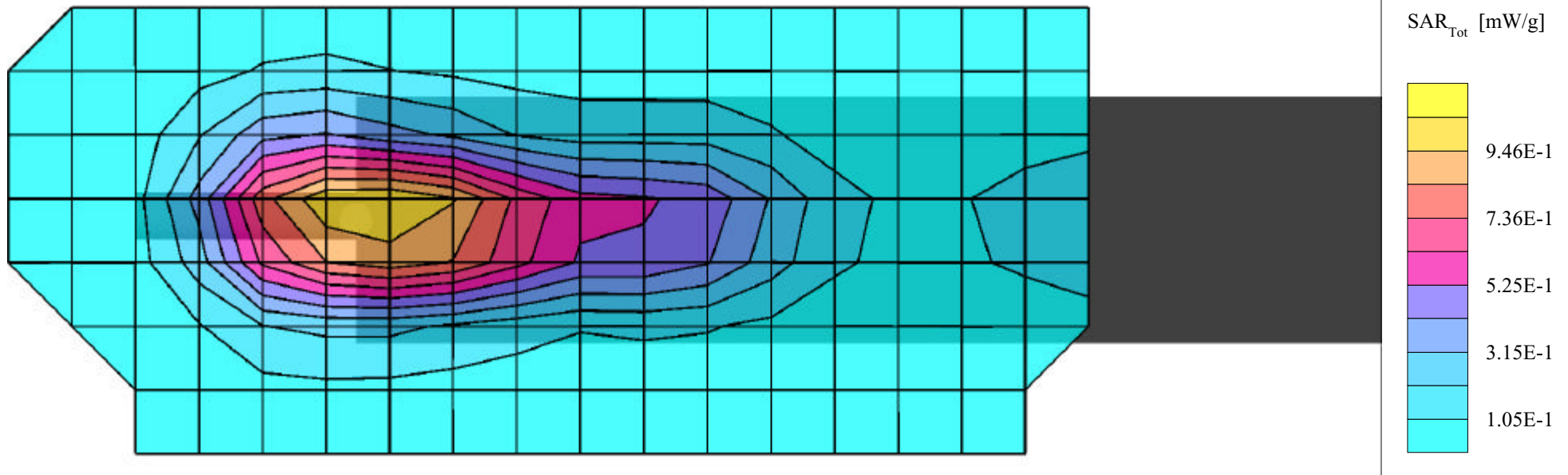
PCS GPRS Mode

Channel 810 [1909.80 MHz]

Conducted Power: 27.9 dBm

Ambient Temp: 23.9°C; Fluid Temp: 23.5°C

Date Tested: June 11, 2003



Itronix Corporation FCC ID: KBCIX100AC750

SAM Phantom; Flat Section; Position: (90°, 270°)

Probe: ET3DV6 - SN1387; ConvF(4.90,4.90,4.90); Crest factor: 2.0

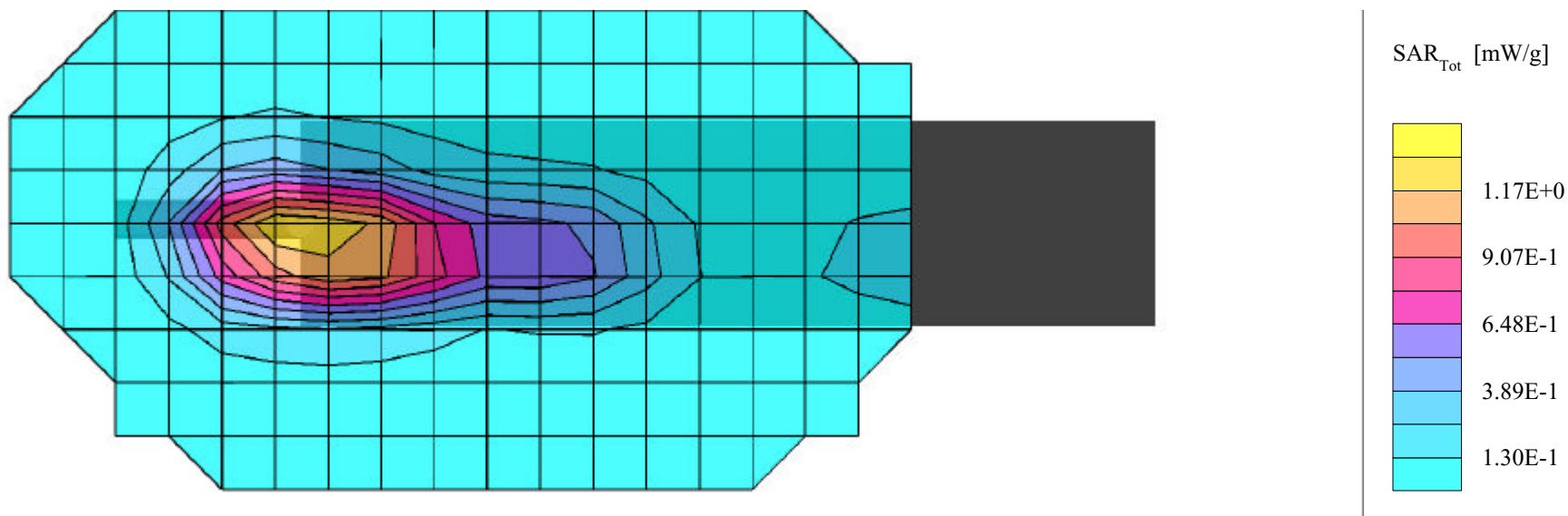
1900 MHz Muscle: $\sigma = 1.51$ mho/m $\epsilon_r = 51.0$ $\rho = 1.00$ g/cm³

Coarse: Dx = 15.0, Dy = 15.0, Dz = 10.0

Cube 5x5x7; Powerdrift: -0.14 dB

SAR (1g): 1.12 mW/g, SAR (10g): 0.680 mW/g

Body SAR - Antenna Side (Right Side) of Handheld PC - Alpha-numeric Keypad Unit
with Carry Case P/N: 54-0644-001 and JABRA Ear-microphone accessories
0.0 cm Separation Distance from Left Side of Carry Case to Planar Phantom
(Front Side of Handheld PC Facing Back of Carry Case)
IX100 Rugged Handheld PC with Sierra Wireless AirCard 750 PCS GPRS Modem Card
with 1/4 Wave Helix Antenna & 7.4V Lithium-ion Battery
PCS GPRS Mode
Channel 661 [1880.00 MHz]
Conducted Power: 28.1 dBm
Ambient Temp: 23.9°C; Fluid Temp: 23.5°C
Date Tested: June 11, 2003



Itronix Corporation FCC ID: KBCIX100AC750

SAM Phantom; Flat Section; Position: (90°,270°)

Probe: ET3DV6 - SN1387; ConvF(4.90,4.90,4.90); Crest factor: 2.0

1900 MHz Muscle: $\sigma = 1.51 \text{ mho/m}$ $\epsilon_r = 51.0$ $\rho = 1.00 \text{ g/cm}^3$

Coarse: Dx = 15.0, Dy = 15.0, Dz = 10.0

Second Coarse Scan to Show Lower Section of Right Side

Body SAR - Antenna Side (Right Side) of Handheld PC - Alpha-numeric Keypad Unit

with Carry Case P/N: 54-0644-001 and JABRA Ear-microphone accessories

0.0 cm Separation Distance from Left Side of Carry Case to Planar Phantom

(Front Side of Handheld PC Facing Back of Carry Case)

IX100 Rugged Handheld PC with Sierra Wireless AirCard 750 PCS GPRS Modem Card

with 1/4 Wave Helix Antenna & 7.4V Lithium-ion Battery

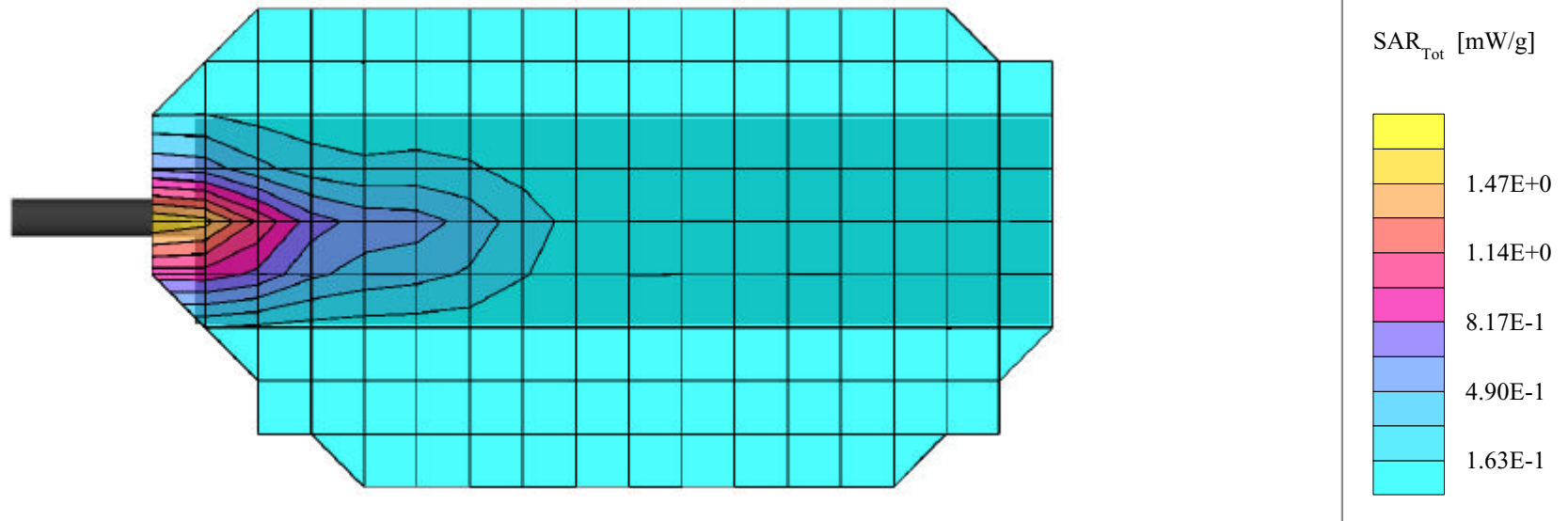
PCS GPRS Mode

Channel 661 [1880.00 MHz]

Conducted Power: 28.1 dBm

Ambient Temp: 23.9°C; Fluid Temp: 23.5°C

Date Tested: June 11, 2003



Itronix Corporation FCC ID: KBCIX100AC750

SAM Phantom; Flat Section; Position: (90°,270°)

Probe: ET3DV6 - SN1387; ConvF(4.90,4.90,4.90); Crest factor: 2.0

1900 MHz Muscle: $\sigma = 1.51 \text{ mho/m}$ $\epsilon_r = 51.0$ $\rho = 1.00 \text{ g/cm}^3$

Coarse: Dx = 15.0, Dy = 15.0, Dz = 10.0

Cube 5x5x7; Powerdrift: -0.18 dB

SAR (1g): 0.764 mW/g, SAR (10g): 0.470 mW/g

Body SAR - Antenna Side (Right Side) of Handheld PC - Alpha-numeric Keypad Unit

with Carry Case P/N: 54-0644-001 and JABRA Ear-microphone accessories

0.0 cm Separation Distance from Left Side of Carry Case to Planar Phantom

(Front Side of Handheld PC Facing Back of Carry Case)

IX100 Rugged Handheld PC with Sierra Wireless AirCard 750 PCS GPRS Modem Card

with 1/4 Wave Helix Antenna & 7.4V Lithium-ion Battery

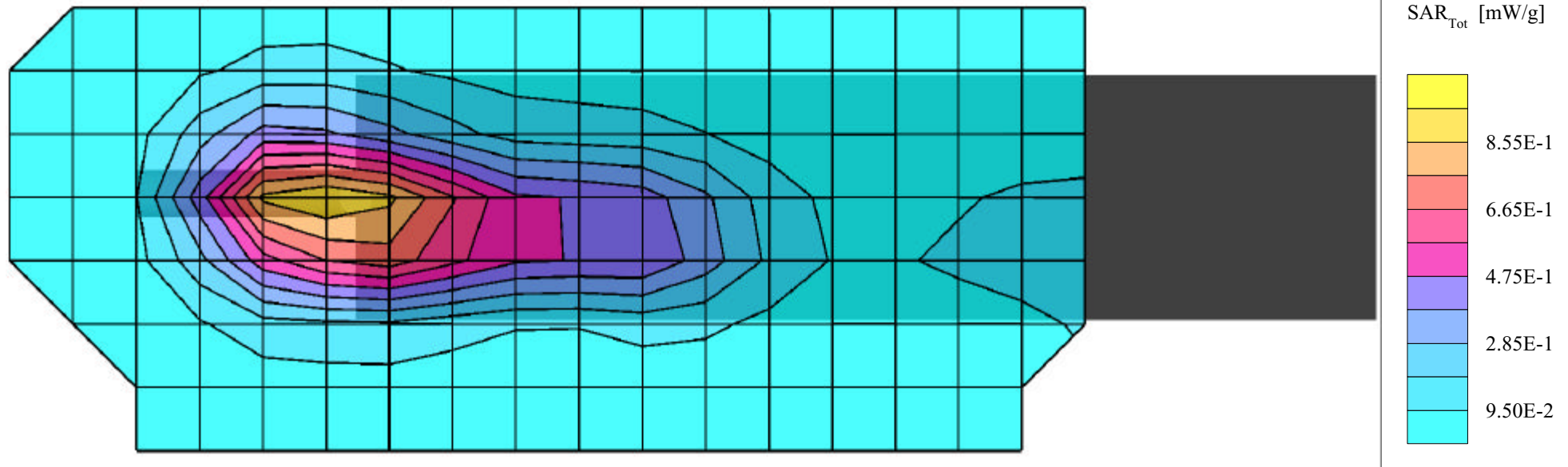
PCS GPRS Mode

Channel 512 [1850.20 MHz]

Conducted Power: 28.0 dBm

Ambient Temp: 23.9°C; Fluid Temp: 23.5°C

Date Tested: June 11, 2003



Itronix Corporation FCC ID: KBCIX100AC750

SAM Phantom; Flat Section; Position: (90°,270°)

Probe: ET3DV6 - SN1387; ConvF(4.90,4.90,4.90); Crest factor: 2.0

1900 MHz Muscle: $\sigma = 1.51$ mho/m $\epsilon_r = 51.0$ $\rho = 1.00$ g/cm³

Coarse: Dx = 15.0, Dy = 15.0, Dz = 10.0

Cube 5x5x7; Powerdrift: -0.15 dB

SAR (1g): 0.941 mW/g, SAR (10g): 0.574 mW/g

Body SAR - Antenna Side (Right Side) of Handheld PC - Alpha-numeric Keypad Unit

with Carry Case P/N: 54-0644-001 and JABRA Ear-microphone accessories

0.0 cm Separation Distance from Left Side of Carry Case to Planar Phantom

(Front Side of Handheld PC Facing Back of Carry Case)

IX100 Rugged Handheld PC with Sierra Wireless AirCard 750 PCS GPRS Modem Card

with 1/4 Wave Helix Antenna & 7.4V Lithium-ion Battery

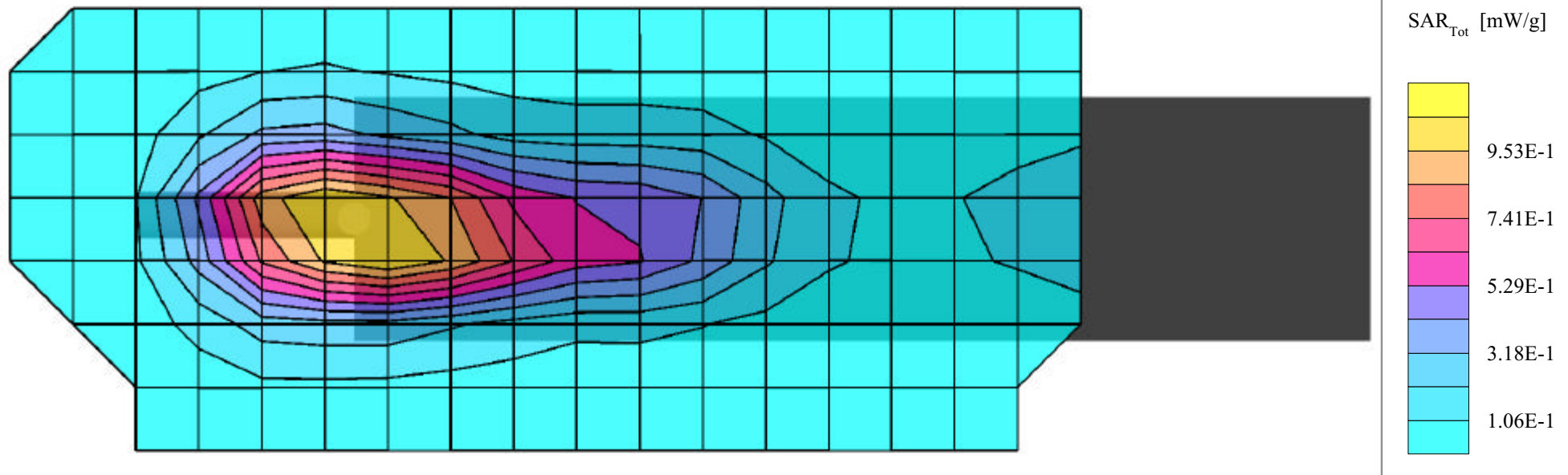
PCS GPRS Mode

Channel 810 [1909.80 MHz]

Conducted Power: 27.9 dBm

Ambient Temp: 23.9°C; Fluid Temp: 23.5°C

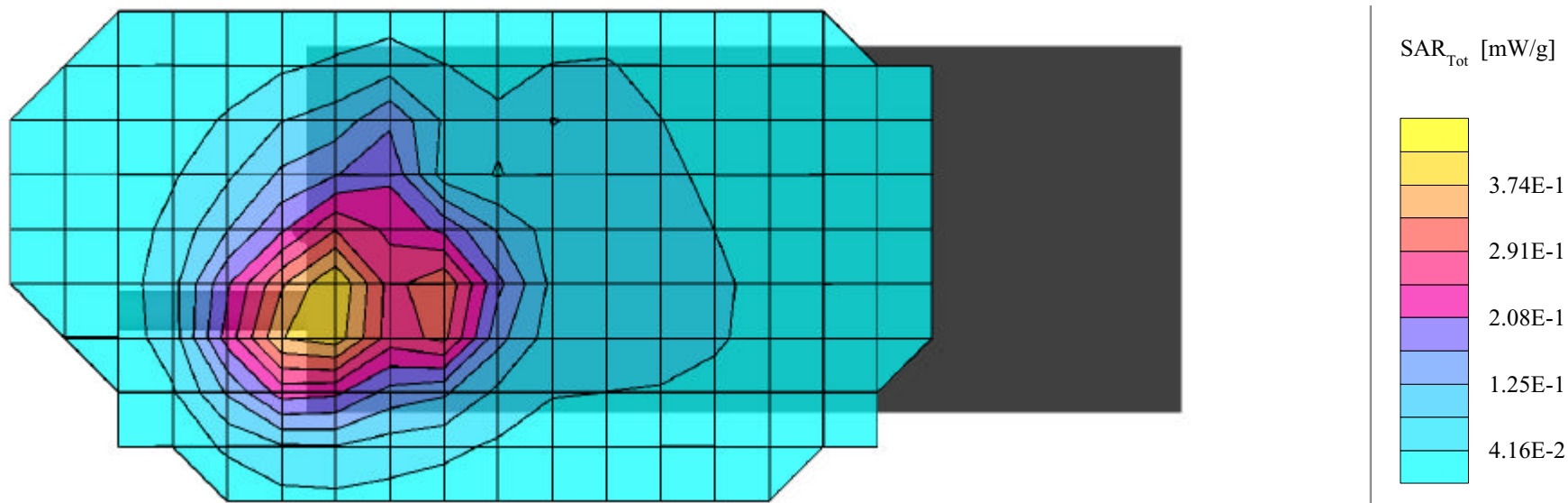
Date Tested: June 11, 2003



Itronix Corporation FCC ID: KBCIX100AC750

SAM Phantom; Flat Section; Position: (270°,90°)
 Probe: ET3DV6 - SN1387; ConvF(4.90,4.90,4.90); Crest factor: 2.0
 1900 MHz Muscle: $\sigma = 1.51 \text{ mho/m}$ $\epsilon_r = 51.0$ $\rho = 1.00 \text{ g/cm}^3$
 Coarse: Dx = 15.0, Dy = 15.0, Dz = 10.0
 Cube 5x5x7; Powerdrift: -0.15 dB
 SAR (1g): 0.334 mW/g, SAR (10g): 0.213 mW/g

Body SAR - Back Side of Handheld PC - Numeric Keypad Unit
 with Carry Case P/N: 54-0644-001 and JABRA Ear-microphone accessories
 0.0 cm Separation Distance from Back of Carry Case to Planar Phantom
 (Back Side of Handheld PC Facing Front of Carry Case)
 IX100 Rugged Handheld PC with Sierra Wireless AirCard 750 PCS GPRS Modem Card
 with 1/4 Wave Helix Antenna & 7.4V Lithium-ion Battery
 PCS GPRS Mode
 Channel 661 [1880.00 MHz]
 Conducted Power: 28.1 dBm
 Ambient Temp: 23.9°C; Fluid Temp: 23.5°C
 Date Tested: June 11, 2003



Itronix Corporation FCC ID: KBCIX100AC750

SAM Phantom; Flat Section; Position: (270°,90°)

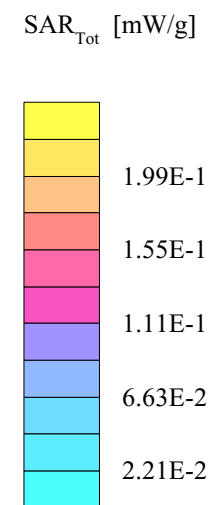
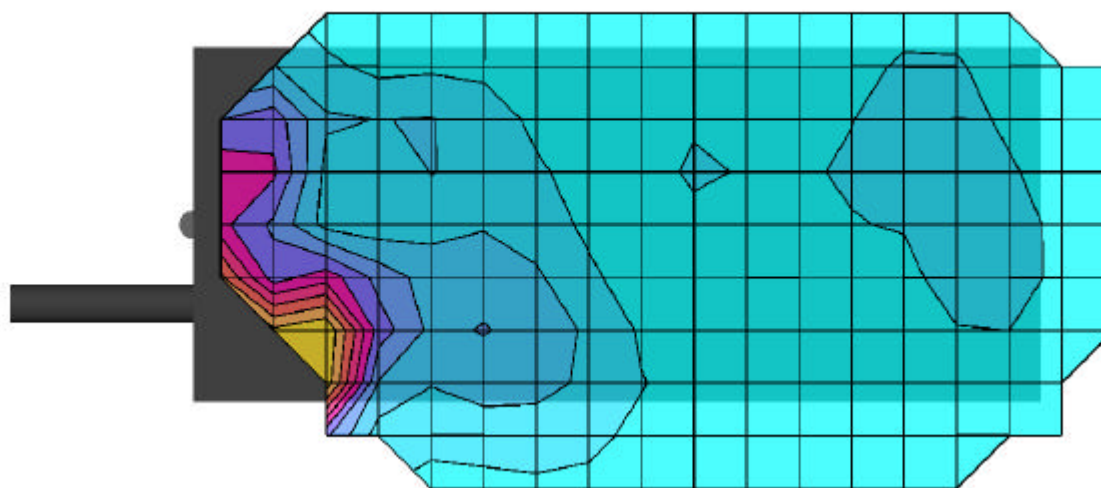
Probe: ET3DV6 - SN1387; ConvF(4.90,4.90,4.90); Crest factor: 2.0

1900 MHz Muscle: $\sigma = 1.51$ mho/m $\epsilon_r = 51.0$ $\rho = 1.00$ g/cm³

Coarse: Dx = 15.0, Dy = 15.0, Dz = 10.0

Second Coarse Scan to Show Lower Section of Back Side

Body SAR - Back Side of Handheld PC - Numeric Keypad Unit
 with Carry Case P/N: 54-0644-001 and JABRA Ear-microphone accessories
 0.0 cm Separation Distance from Back of Carry Case to Planar Phantom
 (Back Side of Handheld PC Facing Front of Carry Case)
 IX100 Rugged Handheld PC with Sierra Wireless AirCard 750 PCS GPRS Modem Card
 with 1/4 Wave Helix Antenna & 7.4V Lithium-ion Battery
 PCS GPRS Mode
 Channel 661 [1880.00 MHz]
 Conducted Power: 28.1 dBm
 Ambient Temp: 23.9°C; Fluid Temp: 23.5°C
 Date Tested: June 11, 2003



Itronix Corporation FCC ID: KBCIX100AC750

SAM Phantom; Flat Section; Position: (90°,270°)

Probe: ET3DV6 - SN1387; ConvF(4.90,4.90,4.90); Crest factor: 2.0

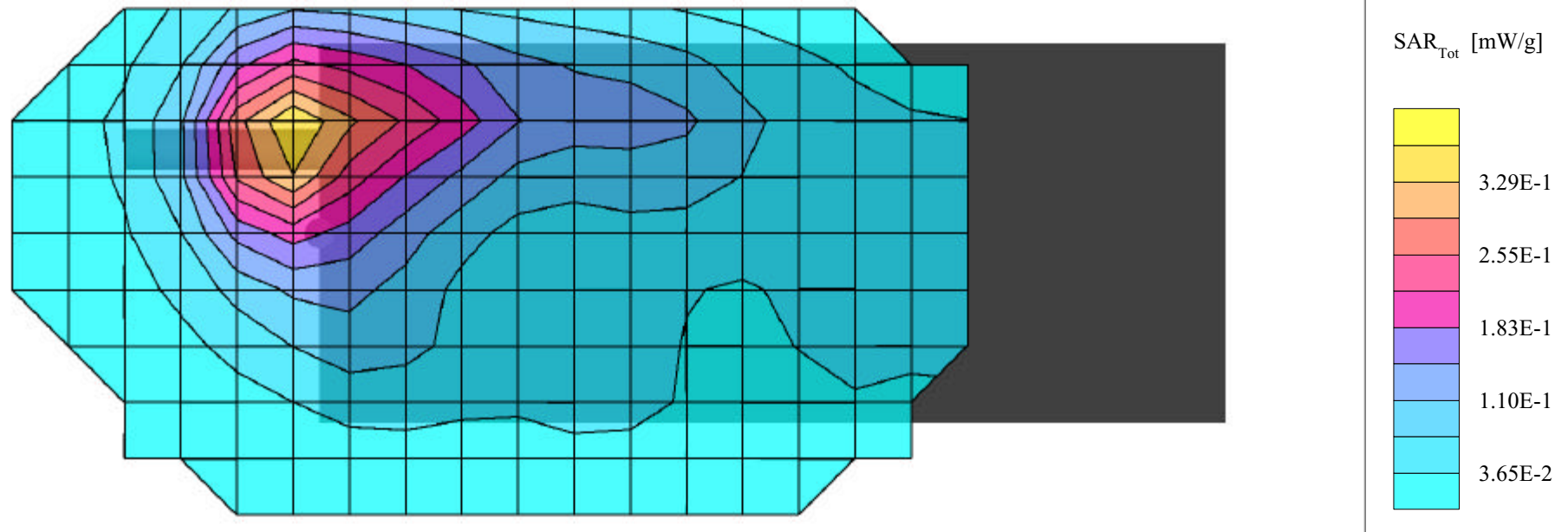
1900 MHz Muscle: $\sigma = 1.51$ mho/m $\epsilon_r = 51.0$ $\rho = 1.00$ g/cm³

Coarse: Dx = 15.0, Dy = 15.0, Dz = 10.0

Cube 5x5x7; Powerdrift: -0.16 dB

SAR (1g): 0.299 mW/g, SAR (10g): 0.185 mW/g

Body SAR - LCD Side (Front Side) of Handheld PC - Numeric Keypad Unit
with Carry Case P/N: 54-0644-001 and JABRA Ear-microphone accessories
0.0 cm Separation Distance from Back of Carry Case to Planar Phantom
(Front Side of Handheld PC Facing Front of Carry Case)
IX100 Rugged Handheld PC with Sierra Wireless AirCard 750 PCS GPRS Modem Card
with 1/4 Wave Helix Antenna & 7.4V Lithium-ion Battery
PCS GPRS Mode
Channel 661 [1880.00 MHz]
Conducted Power: 28.1 dBm
Ambient Temp: 23.9°C; Fluid Temp: 23.5°C
Date Tested: June 11, 2003



Itronix Corporation FCC ID: KBCIX100AC750

SAM Phantom; Flat Section; Position: (90°,270°)

Probe: ET3DV6 - SN1387; ConvF(4.90,4.90,4.90); Crest factor: 2.0

1900 MHz Muscle: $\sigma = 1.51 \text{ mho/m}$ $\epsilon_r = 51.0$ $\rho = 1.00 \text{ g/cm}^3$

Coarse: Dx = 15.0, Dy = 15.0, Dz = 10.0

Second Coarse Scan to Show Lower Section of Front Side

Body SAR - LCD Side (Front Side) of Handheld PC - Numeric Keypad Unit

with Carry Case P/N: 54-0644-001 and JABRA Ear-microphone accessories

0.0 cm Separation Distance from Back of Carry Case to Planar Phantom

(Front Side of Handheld PC Facing Front of Carry Case)

IX100 Rugged Handheld PC with Sierra Wireless AirCard 750 PCS GPRS Modem Card

with 1/4 Wave Helix Antenna & 7.4V Lithium-ion Battery

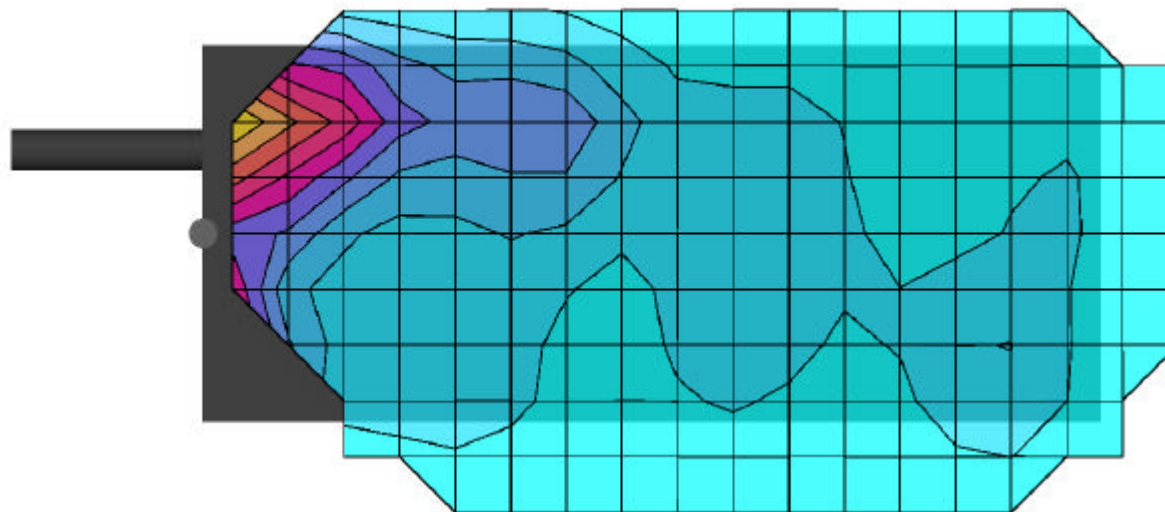
PCS GPRS Mode

Channel 661 [1880.00 MHz]

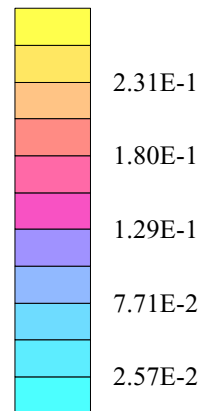
Conducted Power: 28.1 dBm

Ambient Temp: 23.9°C; Fluid Temp: 23.5°C

Date Tested: June 11, 2003



SAR_{Tot} [mW/g]



Itronix Corporation FCC ID: KBCIX100AC750

SAM Phantom; Flat Section; Position: (270°,90°)

Probe: ET3DV6 - SN1387; ConvF(4.90,4.90,4.90); Crest factor: 2.0

1900 MHz Muscle: $\sigma = 1.51$ mho/m $\epsilon_r = 51.0$ $\rho = 1.00$ g/cm³

Coarse: Dx = 15.0, Dy = 15.0, Dz = 10.0

Cube 5x5x7; Powerdrift: -0.18 dB

SAR (1g): 0.711 mW/g, SAR (10g): 0.437 mW/g

Body SAR - Antenna Side (Right Side) of Handheld PC - Numeric Keypad Unit

with Carry Case P/N: 54-0644-001 and JABRA Ear-microphone accessories

0.0 cm Separation Distance from Right Side of Carry Case to Planar Phantom

(Front Side of Handheld PC Facing Front of Carry Case)

IX100 Rugged Handheld PC with Sierra Wireless AirCard 750 PCS GPRS Modem Card

with 1/4 Wave Helix Antenna & 7.4V Lithium-ion Battery

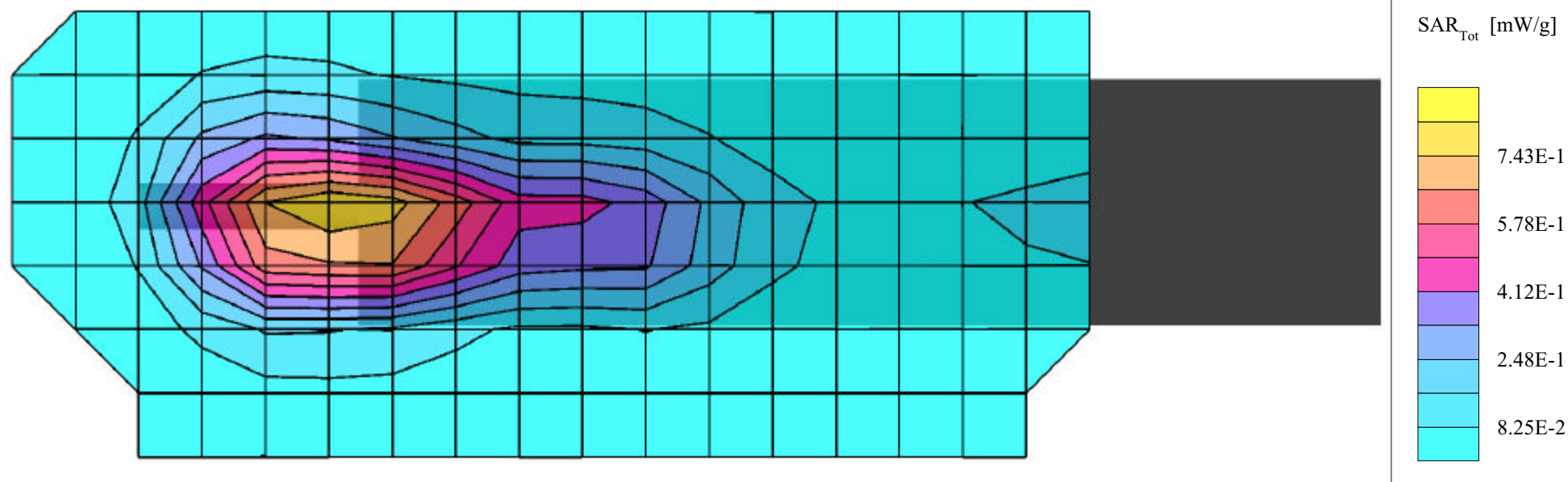
PCS GPRS Mode

Channel 661 [1880.00 MHz]

Conducted Power: 28.1 dBm

Ambient Temp: 23.9°C; Fluid Temp: 23.5°C

Date Tested: June 11, 2003



Itronix Corporation FCC ID: KBCIX100AC750

SAM Phantom; Flat Section; Position: (90°, 270°)

Probe: ET3DV6 - SN1387; ConvF(4.90,4.90,4.90); Crest factor: 2.0

1900 MHz Muscle: $\sigma = 1.51$ mho/m $\epsilon_r = 51.0$ $\rho = 1.00$ g/cm³

Coarse: Dx = 15.0, Dy = 15.0, Dz = 10.0

Second Coarse Scan to Show Lower Section of Right Side

Body SAR - Antenna Side (Right Side) of Handheld PC - Numeric Keypad Unit

with Carry Case P/N: 54-0644-001 and JABRA Ear-microphone accessories

0.0 cm Separation Distance from Right Side of Carry Case to Planar Phantom

(Front Side of Handheld PC Facing Front of Carry Case)

IX100 Rugged Handheld PC with Sierra Wireless AirCard 750 PCS GPRS Modem Card

with 1/4 Wave Helix Antenna & 7.4V Lithium-ion Battery

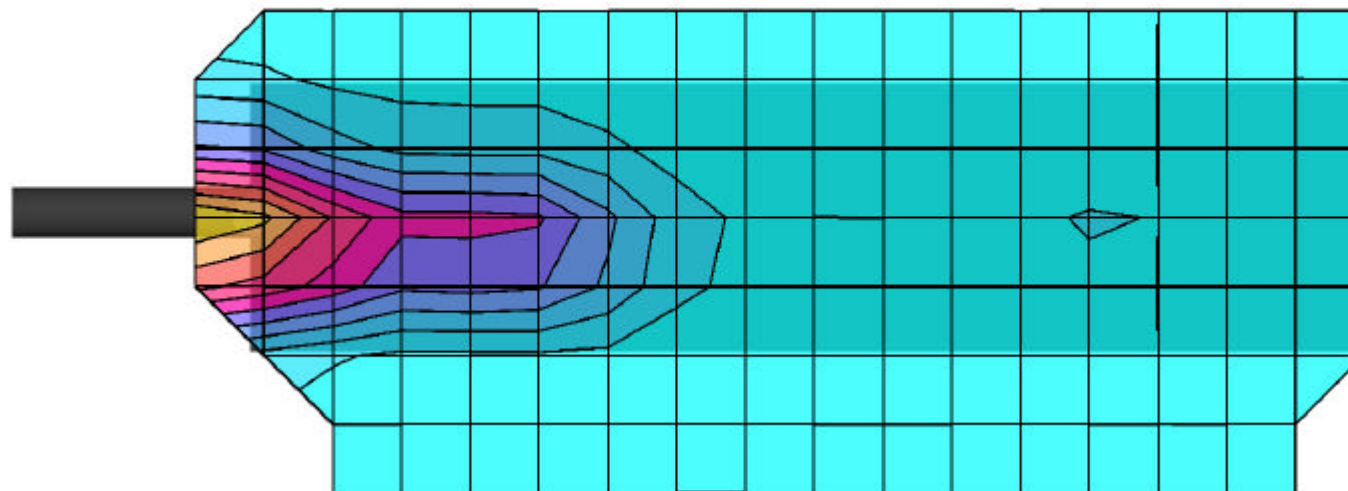
PCS GPRS Mode

Channel 661 [1880.00 MHz]

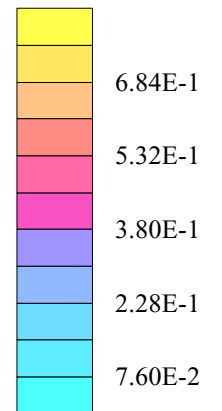
Conducted Power: 28.1 dBm

Ambient Temp: 23.9°C; Fluid Temp: 23.5°C

Date Tested: June 11, 2003



SAR_{Tot} [mW/g]



Itronix Corporation FCC ID: KBCIX100AC750

SAM Phantom; Flat Section; Position: (270°,90°)

Probe: ET3DV6 - SN1387; ConvF(4.90,4.90,4.90); Crest factor: 2.0

1900 MHz Muscle: $\sigma = 1.51$ mho/m $\epsilon_r = 51.0$ $\rho = 1.00$ g/cm³

Coarse: Dx = 15.0, Dy = 15.0, Dz = 10.0

Cube 5x5x7; Powerdrift: -0.12 dB

SAR (1g): 0.892 mW/g, SAR (10g): 0.525 mW/g

Body SAR - Antenna Side (Right Side) of Handheld PC - Numeric Keypad Unit

with Carry Case P/N: 54-0644-001 and JABRA Ear-microphone accessories

0.0 cm Separation Distance from Left Side of Carry Case to Planar Phantom

(Back Side of Handheld PC Facing Front of Carry Case)

IX100 Rugged Handheld PC with Sierra Wireless AirCard 750 PCS GPRS Modem Card

with 1/4 Wave Helix Antenna & 7.4V Lithium-ion Battery

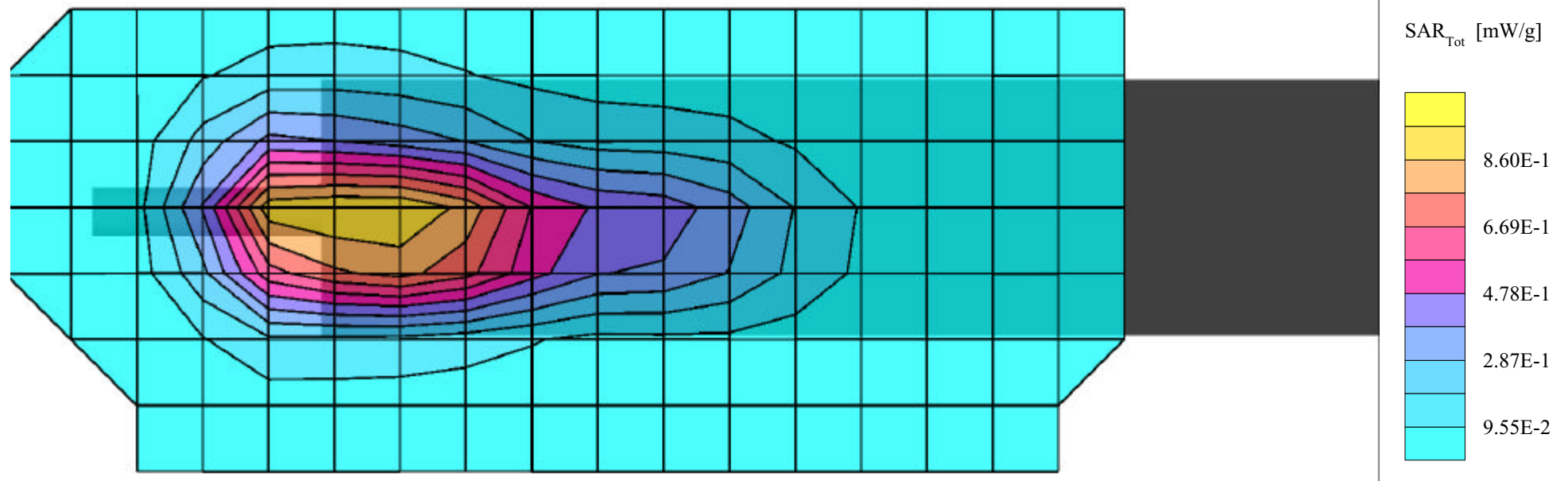
PCS GPRS Mode

Channel 661 [1880.00 MHz]

Conducted Power: 28.1 dBm

Ambient Temp: 23.9°C; Fluid Temp: 23.5°C

Date Tested: June 11, 2003



Itronix Corporation FCC ID: KBCIX100AC750

SAM Phantom; Flat Section; Position: (90°, 270°)

Probe: ET3DV6 - SN1387; ConvF(4.90,4.90,4.90); Crest factor: 2.0

1900 MHz Muscle: $\sigma = 1.51$ mho/m $\epsilon_r = 51.0$ $\rho = 1.00$ g/cm³

Coarse: Dx = 15.0, Dy = 15.0, Dz = 10.0

Second Coarse Scan to Show Lower Section of Right Side

Body SAR - Antenna Side (Right Side) of Handheld PC - Numeric Keypad Unit

with Carry Case P/N: 54-0644-001 and JABRA Ear-microphone accessories

0.0 cm Separation Distance from Left Side of Carry Case to Planar Phantom

(Back Side of Handheld PC Facing Front of Carry Case)

IX100 Rugged Handheld PC with Sierra Wireless AirCard 750 PCS GPRS Modem Card

with 1/4 Wave Helix Antenna & 7.4V Lithium-ion Battery

PCS GPRS Mode

Channel 661 [1880.00 MHz]

Conducted Power: 28.1 dBm

Ambient Temp: 23.9°C; Fluid Temp: 23.5°C

Date Tested: June 11, 2003

