



# ES620 user manual

Suzhou eSkywireless Inc.



## Information to User

---

This device complies with part 15 of the FCC Rules. Operation is subject to the following two conditions: (1) This device may not cause harmful interference, and (2) this device must accept any interference received, including interference that may cause undesired operation.

## RF warning

---

This device meets the government's requirements for exposure to radio waves.

This device is designed and manufactured not to exceed the emission limits for exposure to radio frequency (RF) energy set by the Federal Communications Commission of the U.S. Government.

For body worn operation, this device was tested for compliance with the applicable FCC specific absorption rate (SAR) limits for radio frequency (RF) exposure during body-worn operations. To ensure that RF exposure levels remain at or below the tested levels, use a belt-clip, holster, or similar accessory between your body and the device. Such accessories should not contain any metallic components. Body-worn accessories that do not meet these specifications may not ensure compliance with applicable SAR limits and their use should be avoided.



## 1 PREPARE before INSATLLATION

---

### 1.1 Product Display



(image of ES620)

### 1.2 Packaging Inspection

Open the box, check the terminal model is correct and the accessories are complete. Otherwise, please contact your dealer.

### 1.3 Install SIM Card

#### 1.3.1 Selection of SIM Card

The ES620 is a GPS/GPRS terminal, and it needs a GSM/GPRS SIM card. please reference dealer's opinion to select carrier.

#### 1.3.2 Installation SIM card

Open the terminal cover, and put the metal side of SIM card face down and then fasten the card slot cover.

### 1.4 Power On

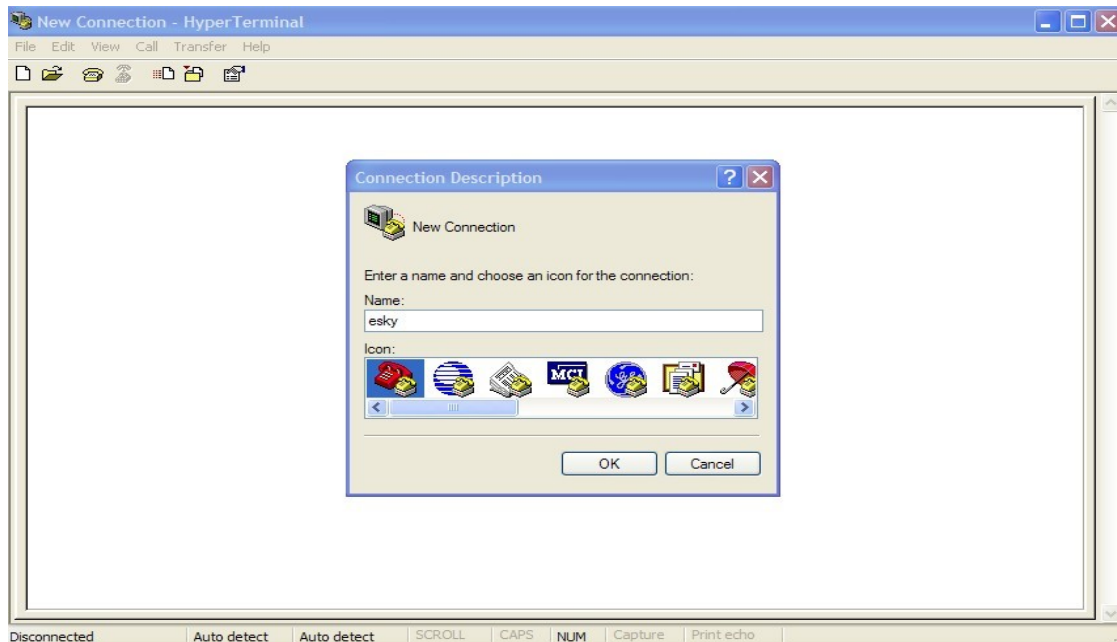
The terminal standard power supply is 3.7V-4.2V. The red light is the power light, orange light is GSM signal, a green light is GPS signals.

**Note:** Equipment working temperature is -20℃ to 65℃。

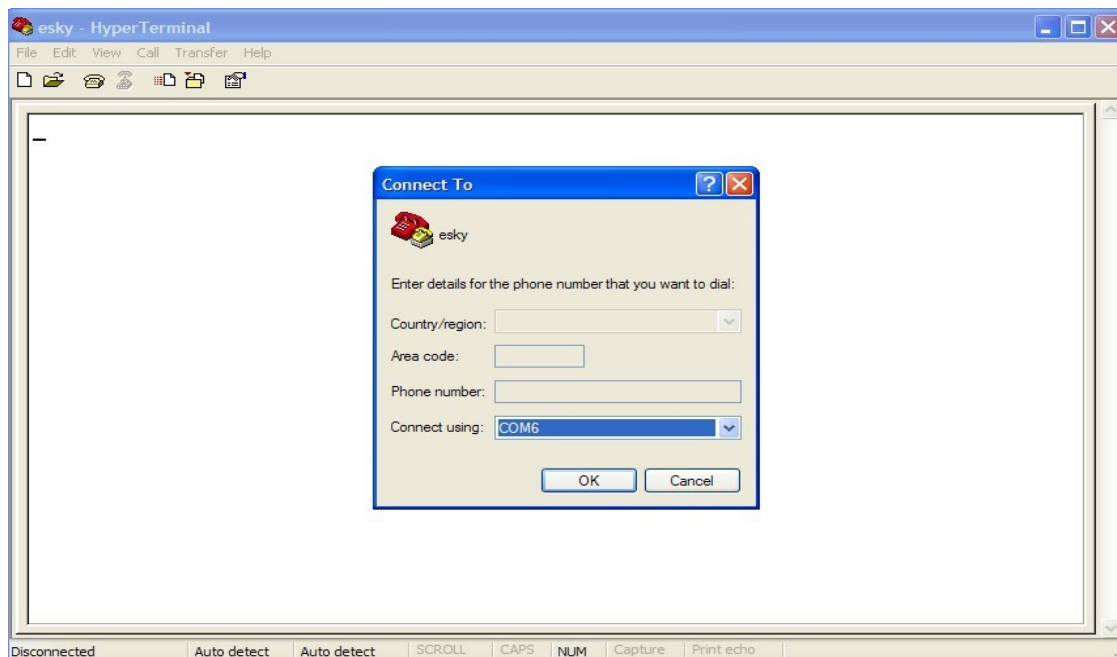


## 2 Steps of AT Setting before tests

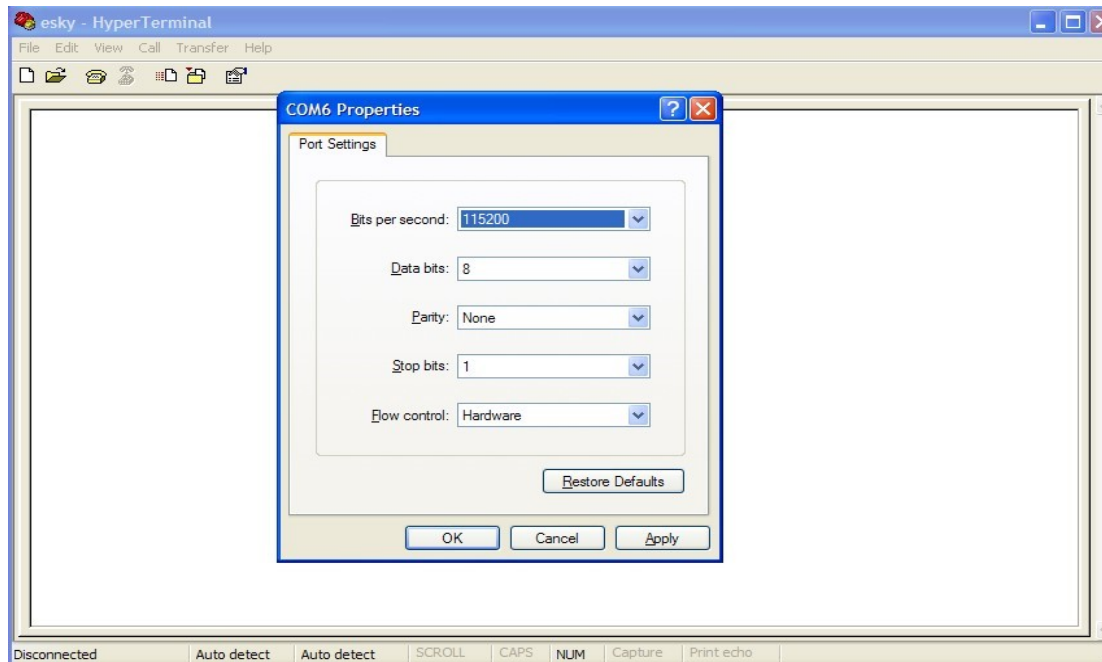
Start hyper-terminal connection as follows.



1)select the comm port of PC through which ES620 is connected with PC, as the follows



2) In Port Settings, change communication speed (bits per second) to 115200bps,

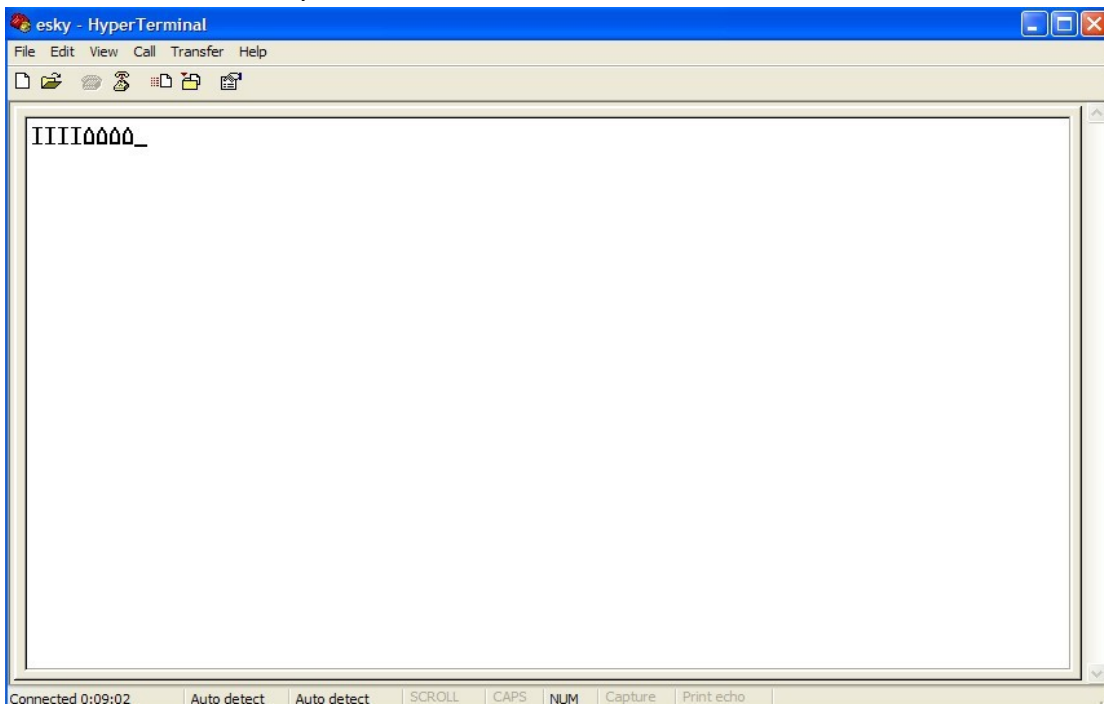


3) Final step is the certain AT settings necessary after 1<sup>st</sup> running of downloaded program.

3.1) Start connection first

3.2) Restart ES620

3.3) After you see the "IIII" as the following picture, start setting.



### 3 INSTALL and OPERATION

#### 3.1 Installation Method

The terminal is GPS positioning products, it is recommended that you follow the instructions to install.

Note:

- 1) The following installation order, **please do not inverted**.
- 2) During the installation process, **please do not supply the terminal**.



- ① Charging line.
- ② charging plug.

### 3.1.1 Installation

The equipment can be placed in any position.

- ① The equipment can be in your hands.
- ② Equipment can be placed in the position of any car (such as under the dashboard, windshield, feet, etc.)
- ③ The equipment can be in any package



**\*The bottom of the front windshield decorative plates**



**\*Between the air conditioning ducts and decorative plates**





### 3.2 Installation Notes

- ① Avoid put together with the emission source, for example, reversing radar, anti-theft devices and other on-board communications equipment.
- ② As for fixing the terminal, you can bound with ties or stick with wide sponge strength double-faced adhesive.
- ③ The terminal has GSM antenna and GPS antenna, so the installation should ensure that the ES620 face up (that is GPS toward the sky). Besides, there is no on-metallic object that obscures above the terminal.
- ④ If your device is in the metal mask, GPS receiving signal will be weakened, and it may cause GPS work abnormal. So please change the location you installed the terminal. ↘





## 4.SOS Introduction

---

SOS can make an SOS call or SMS message to a pre-configured phone.

1).SOS message: When press the SOS button, if the device positioning by GPS, the equipment will receive GPS information; If the device can't positioning by GPS, the equipment will receive the base station information;

2).SOS call: When press the SOS button, the device will connect the specified number. During the call, please held the equipment close to ear (the usage is similar with mobile phone).

**Federal Communication Commission Interference Statement**

This equipment has been tested and found to comply with the limits for a Class B digital device, pursuant to Part 15 of the FCC Rules. These limits are designed to provide reasonable protection against harmful interference in a residential installation. This equipment generates, uses and can radiate radio frequency energy and, if not installed and used in accordance with the instructions, may cause harmful interference to radio communications. However, there is no guarantee that interference will not occur in a particular installation. If this equipment does cause harmful interference to radio or television reception, which can be determined by turning the equipment off and on, the user is encouraged to try to correct the interference by one of the following measures:

- Reorient or relocate the receiving antenna.
- Increase the separation between the equipment and receiver.
- Connect the equipment into an outlet on a circuit different from that to which the receiver is connected.
- Consult the dealer or an experienced radio/TV technician for help.

FCC Caution: Any changes or modifications not expressly approved by the party responsible for compliance could void the user's authority to operate this equipment.

This transmitter must not be co-located or operating in conjunction with any other antenna or transmitter.

This equipment complies with FCC radiation exposure limits set forth for an uncontrolled environment.