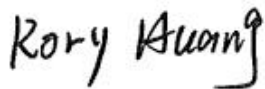


# TEST REPORT

Report No.	CISRR240113080
Project No.	CISR240113080
FCC ID	2AXS5-FLW8189FSA7-A
Applicant	Jiang Su Fulian Communication Technology Co., Ltd
Address	Yongan Community, the south of Lanling Road, Danyang Development Distinct, Jiangsu China
Manufacturer	Jiang Su Fulian Communication Technology Co., Ltd
Address	Yongan Community, the south of Lanling Road, Danyang Development Distinct, Jiangsu China
Product Name	FLW8189FSA7-A WiFi module
Trade Mark	--
Model/Type reference	FLW8189FSA7-A
Listed Model(s)	--
Standard	Part 15 Subpart C Section 15.247
Test date	January 13, 2024 ~ February 21, 2024
Issue date	February 21, 2024
Test result	<b>Complied</b>



Prepared by: Rory Huang



Approved by: Genry Long

*The test results relate only to the tested samples.*

*The test report should not be reproduced except in full without the written approval of Shenzhen Bangce Testing Technology Co., Ltd.*

## Contents

<b>1. REPORT VERSION .....</b>	<b>3</b>
<b>2. SUMMARY OF TEST RESULT .....</b>	<b>4</b>
<b>3. SUMMARY .....</b>	<b>5</b>
3.1. Product Description .....	5
3.2. Radio Specification Description .....	5
3.3. Modification of EUT .....	5
3.4. Testing Site .....	5
<b>4. TEST CONFIGURATION .....</b>	<b>6</b>
4.1. Test frequency list .....	6
4.2. Test mode .....	6
4.3. Support unit used in test configuration and system .....	6
4.4. Test sample information .....	6
4.5. Testing environmental condition .....	7
4.6. Statement of the measurement uncertainty .....	7
4.7. Equipment Used during the Test .....	8
<b>5. TEST CONDITIONS AND RESULTS .....</b>	<b>9</b>
5.1. Antenna Requirement .....	9
5.2. AC Conducted Emission .....	10
5.3. Peak Output Power .....	13
5.4. 6 dB Bandwidth .....	14
5.5. 99% Occupied Bandwidth .....	15
5.6. Power spectral density .....	16
5.7. Conducted Band edge and Spurious Emission .....	17
5.8. Radiated Band edge Emission .....	18
5.9. Radiated Spurious Emission .....	20
<b>6. TEST SETUP PHOTOS .....</b>	<b>25</b>
<b>7. EXTERNAL AND INTERNAL PHOTOS .....</b>	<b>27</b>
7.1. External Photos .....	27
7.2 Internal photos .....	28

## 1. REPORT VERSION

Version No.	Issue date	Description
00	February 21, 2024	Original

## 2. SUMMARY OF TEST RESULT

Report clause	Test Item	Standard Requirement	Result
5.1	Antenna Requirement	15.203/15.247 (c)	PASS
5.2	AC Conducted Emission	15.207	PASS
5.3	Peak Output Power	15.247 (b)(1)	PASS
5.4	6 dB Bandwidth	15.247 (a)(2)	PASS
5.5	99% Occupied Bandwidth	-	PASS* <sup>1</sup>
5.6	Power spectral density	15.247 (e)	PASS
5.7	Conducted Band Edge and Spurious Emission	15.247(d)/15.205	PASS
5.8	Radiated Band Edge Emission	15.205/15.209	PASS
5.9	Radiated Spurious Emission	15.247(d)/15.205/15.209	PASS

**Note:**

- The measurement uncertainty is not included in the test result.
- \*1: No requirement on standard, only report these test data.

### 3. SUMMARY

#### 3.1. Product Description

Main unit information:	
Product Name:	FLW8189FSA7-A WiFi module
Trade Mark:	--
Model No.:	FLW8189FSA7-A
Listed Model(s):	--
Power supply:	DC 3.3V
Hardware version:	PCB-FLW8189FSA-V2.0
Software version:	00013756- Win7_MP_Kit_RTL11n_8189FTV_SDIO_v0.02_20181130(BETA)

#### 3.2. Radio Specification Description

Technology:	802.11b/802.11g/802.11n(HT20)/802.11n(HT40)
Modulation:	802.11b: DSSS 802.11g/802.11n(HT20/HT40): OFDM
Operation frequency:	802.11b/802.11g/802.11n(HT20): 2412MHz~2462MHz 802.11n(HT40): 2422MHz~2452MHz
Channel number:	802.11b/802.11g/802.11n(HT20): 11 802.11n(HT40): 9
Channel separation:	5MHz
Antenna type:	Metal Antenna
Antenna gain:	3.1dBi

#### 3.3. Modification of EUT

No modifications are made to the EUT during all test items.

#### 3.4. Testing Site

Laboratory Name	Shenzhen Bangce Testing Technology Co., Ltd.
Laboratory Location	101, building 10, Yunli Intelligent Park, Shutianpu community, Matian Street, Guangming District, Shenzhen, Guangdong, China
FCC registration number	736346

## 4. TEST CONFIGURATION

### 4.1. Test frequency list

Channel	Frequency (MHz)	
	802.11b/g/n(H20)	802.11n(H40)
CH-L	2412	2422
CH-M	2437	2437
CH-H	2462	2452

### 4.2. Test mode

For RF test items:	
The engineering test program(sscom5.1.3) was provided and enabled to make EUT continuous transmitting.	
Test Item	Modulation
Conducted test item	DSSS
Radiated test item	DSSS
Remark: – For radiated test item, the worst mode 802.11B was reported only, because this data rate has the highest RF output power at preliminary tests. – The EUT in each of three orthogonal axis emissions had been tested, but only the worst case (X axis) data recorded in the report.	

### 4.3. Support unit used in test configuration and system

The EUT has been associated with peripherals and configuration operated in a manner tended to maximize its emission characteristics in a typical application.

The following peripheral devices and interface cables were connected during the measurement:

Item	Equipment name	Trade Name	Model No.
1	--	--	--

### 4.4. Test sample information

Type	sample no.
Engineer sample	CISR240113080-1#
Normal sample	CISR240113080-2#

#### 4.5. Testing environmental condition

Type	Requirement	Actual
Temperature:	15~35°C	25°C
Relative Humidity:	25~75%	50%
Air Pressure:	860~1060mbar	1000mbar

#### 4.6. Statement of the measurement uncertainty

No.	Test Items	Measurement Uncertainty
1	AC Conducted Emission	1.63dB
2	Peak Output Power	1.34dB
3	Power Spectral Density	1.34dB
4	6dB Bandwidth	0.002%
5	99% Occupied Bandwidth	0.002%
6	Conducted Band Edge and Spurious Emission	1.93dB
7	Radiated Band Edge Emission	3.76dB for 30MHz-1GHz 3.80dB for above 1GHz
8	Radiated Spurious Emission	3.76dB for 30MHz-1GHz 3.80dB for above 1GHz

This uncertainty represents an expanded uncertainty expressed at approximately the 95% confidence level using a coverage factor of  $k=1.96$ .

#### 4.7. Equipment Used during the Test

Equipment	Manufacture	Model No.	Serial No.	Last cal.	Cal Interval
9*6*6 anechoic chamber	SKET	9.3*6.3*6	N/A	2021.10.15	3Year
Spectrum analyzer	Agilent	N9020A	MY50530263	2024.01.08	1Year
Receiver	ROHDE&SCHWARZ	ESCI	100853	2024.01.08	1Year
Spectrum analyzer	R&S	FSV-40N	/	2024.01.08	1Year
Bilog Antenna	Schwarzbeck	VULB 9163	1463	2023.01.09	2Year
Horn Antenna	SCHWARZBECK	BBHA 9120 D	2487	2023.01.09	2Year
Active Loop Antenna	SCHWARZBECK	FMZB 1519B	/	2023.01.09	2Year
RF Cable	Tonscend	Cable 1	/	2024.01.08	1Year
RF Cable	Tonscend	Cable 2	/	2024.01.08	1Year
RF Cable	SKET	Cable 3	/	2024.01.08	1Year
Pre-amplifier	Tonscend	TAP9K3G32	AP21G806153	2024.01.08	1Year
Pre-amplifier	Tonscend	TAP01018050	AP22E806229	2024.01.08	1Year
L.I.S.N.#1	Schwarzbeck	NSLK8127	/	2024.01.08	1Year
L.I.S.N.#2	ROHDE&SCHWARZ	ENV216	/	2024.01.08	1 Year
Horn Antenna	SCHWARZBECK	BBHA9170	1130	2023.01.09	2 Year
Preamplifier	Tonscend	TAP18040048	AP21C806126	2024.01.08	1 Year
variable-frequency power source	Pinhong	PH1110	/	2024.01.08	1 Year
6dB Attenuator	SKET	DC-6G	/	N/A	N/A
Artificial power network	Schwarzbeck	NSLK8127	8127-01096	2024.01.08	1 Year
EMI Test Receiver	Rohde&schwarz	ESCI7	100853	2024.01.08	1 Year
8-wire Impedance Stabilization Network	Schwarzbeck	NTFM 8158	8158-00337	2024.01.08	1 Year
Artificial power network	Schwarzbeck	ENV216	/	2024.01.08	1 Year



## 5. TEST CONDITIONS AND RESULTS

### 5.1. Antenna Requirement

#### Standard Applicable:

#### **FCC CFR Title 47 Part 15 Subpart C Section 15.203:**

An intentional radiator shall be designed to ensure that no antenna other than that furnished by the responsible party shall be used with the device. The use of a permanently attached antenna or of an antenna that uses a unique coupling to the intentional radiator, the manufacturer may design the unit so that a broken antenna can be replaced by the user, but the use of a standard antenna jack or electrical connector is prohibited.

#### **FCC CFR Title 47 Part 15 Subpart C Section 15.247(c) (1) (I):**

(i) Systems operating in the 2400-2483.5 MHz band that is used exclusively for fixed. Point-to-point operations may employ transmitting antennas with directional gain greater than 6dBi provided the maximum conducted output power of the intentional radiator is reduced by 1 dB for every 3 dB that the directional gain of the antenna exceeds 6dBi.

#### Description

The antenna type is a Metal antenna, Refer to the below antenna photo.

Remark: The antenna gain is provided by the customer, if the data provided by the customer is not accurate, Shenzhen Bangce Testing Technology Co., Ltd. does not assume any responsibility.

## 5.2. AC Conducted Emission

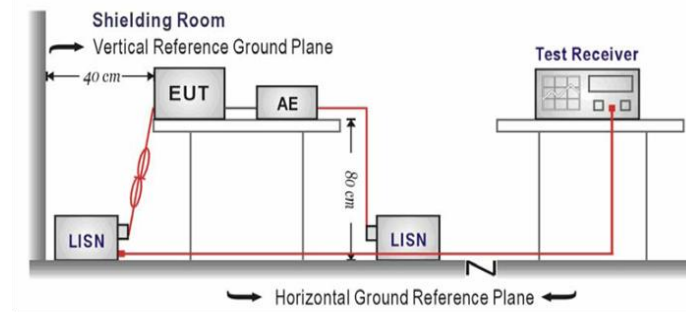
### Limit:

### FCC CFR Title 47 Part 15 Subpart C Section 15.207

Frequency range (MHz)	Limit (dBuV)	
	Quasi-peak	Average
0.15-0.5	66 to 56*	56 to 46*
0.5-5	56	46
5-30	60	50

\* Decreases with the logarithm of the frequency.

### Test configuration:



### Test procedure:

1. The EUT was setup according to ANSI C63.10 requirements.
2. The EUT was placed on a platform of nominal size, 1 m by 1.5 m, raised 80 cm above the conducting ground plane. The vertical conducting plane was located 40 cm to the rear of the EUT. All other surfaces of EUT were at least 80 cm from any other grounded conducting surface.
3. The EUT and simulators are connected to the main power through a line impedances stabilization network (LISN). The LISN provides a 50 ohm /50uH coupling impedance for the measuring equipment.
4. The peripheral devices are also connected to the main power through a LISN. (Refer to the block diagram of the test setup and photographs)
5. Each current-carrying conductor of the EUT power cord, except the ground (safety) conductor, was individually connected through a LISN to the input power source.
6. The excess length of the power cord between the EUT and the LISN receptacle were folded back and forth at the center of the lead to form a bundle not exceeding 40 cm in length.
7. Conducted emissions were investigated over the frequency range from 0.15MHz to 30MHz using a receiver bandwidth of 9 kHz.
8. During the above scans, the emissions were maximized by cable manipulation.

### Test mode:

Refer to the clause 4.3

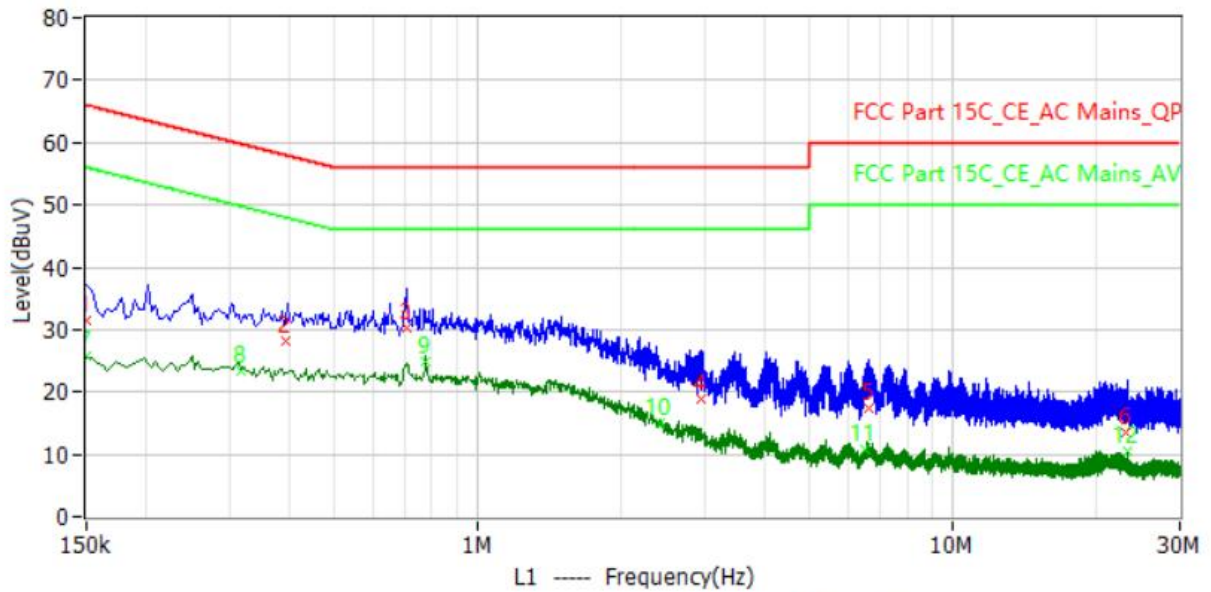
### Result:

**Passed**

Have pre-scan all test channel, found 11B mode CH1 which it was worst case, so only show the worst case's data on this report.

Test Line:

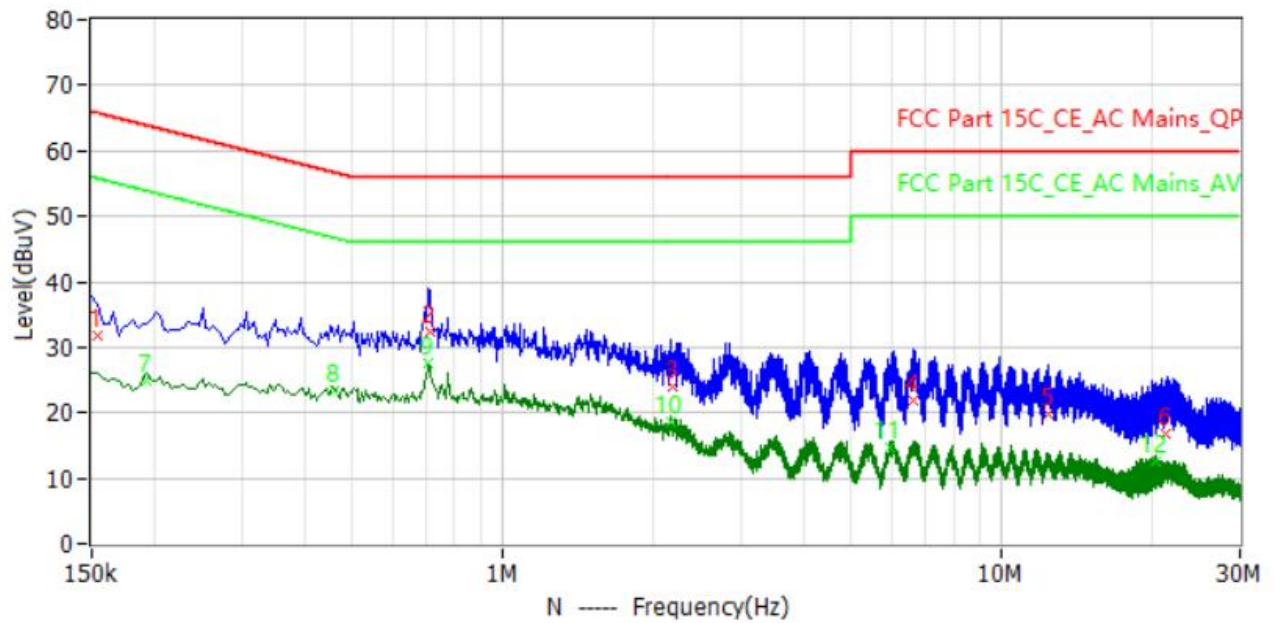
L



No.	Frequency	Limit dBuV	Level dBuV	Delta dB	Reading dBuV	Factor dB	Detector	Phase
1	150.000kHz	66.0	31.6	-34.4	31.6	0.0	QP	L1
2	394.000kHz	58.0	28.1	-29.9	28.0	0.1	QP	L1
3	710.000kHz	56.0	30.2	-25.8	30.1	0.1	QP	L1
4	2.962MHz	56.0	18.9	-37.1	18.8	0.1	QP	L1
5	6.654MHz	60.0	17.4	-42.6	17.2	0.2	QP	L1
6	23.034MHz	60.0	13.4	-46.6	12.9	0.5	QP	L1
7	150.000kHz	56.0	25.7	-30.3	25.7	0.0	CAV	L1
8	318.000kHz	49.8	23.4	-26.4	23.3	0.1	CAV	L1
9	778.000kHz	46.0	25.0	-21.0	24.9	0.1	CAV	L1
10	2.418MHz	46.0	15.1	-30.9	15.0	0.1	CAV	L1
11	6.554MHz	50.0	10.7	-39.3	10.5	0.2	CAV	L1
12	23.202MHz	50.0	10.5	-39.5	10.0	0.5	CAV	L1

Test Line:

N



No.	Frequency	Limit dBuV	Level dBuV	Delta dB	Reading dBuV	Factor dB	Detector	Phase
1	154.000kHz	65.8	31.8	-34.0	31.8	0.0	QP	N
2	714.000kHz	56.0	32.4	-23.6	32.3	0.1	QP	N
3	2.182MHz	56.0	23.9	-32.1	23.8	0.1	QP	N
4	6.642MHz	60.0	21.8	-38.2	21.6	0.2	QP	N
5	12.410MHz	60.0	19.7	-40.3	19.3	0.4	QP	N
6	21.358MHz	60.0	16.8	-43.2	16.3	0.5	QP	N
7	194.000kHz	53.9	24.9	-29.0	24.9	0.0	CAV	N
8	458.000kHz	46.7	23.5	-23.2	23.4	0.1	CAV	N
9	706.000kHz	46.0	27.5	-18.5	27.4	0.1	CAV	N
10	2.174MHz	46.0	18.7	-27.3	18.6	0.1	CAV	N
11	5.986MHz	50.0	14.7	-35.3	14.5	0.2	CAV	N
12	20.378MHz	50.0	12.5	-37.5	12.0	0.5	CAV	N

### 5.3. Peak Output Power

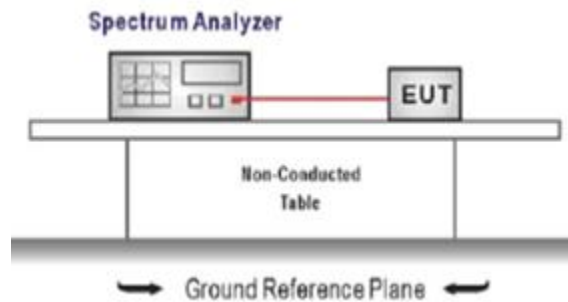
Limit:

**FCC CFR Title 47 Part 15 Subpart C Section 15.247 (b)(1):**

For frequency hopping systems operating in the 2400-2483.5 MHz band employing at least 75 non-overlapping hopping channels, and all frequency hopping systems in the 5725-5850 MHz band: 1 watt.

For all other frequency hopping systems in the 2400-2483.5 MHz band: 0.125 watts.

Test configuration:



Test procedure:

1. The transmitter output was connected to the spectrum analyzer through an attenuator, the pathloss was compensated to the results for each measurement.
2. Set to the maximum power setting and enable the EUT transmit continuously
3. Use the following spectrum analyzer settings:  
Span = approximately 5 times the 20 dB bandwidth, centered on a hopping channel  
RBW  $\geq$  the 20 dB bandwidth of the emission being measured,  
VBW  $\geq$  RBW  
Sweep = auto, Detector function = peak, Trace = max hold
4. Measure and record the results in the test report.

Test mode:

Refer to the clause 4.3

Test data:

Refer to the Appendix A

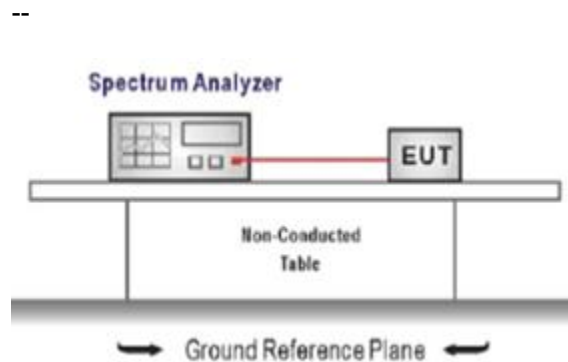
Result:

**Passed**

#### 5.4. 6 dB Bandwidth

Limit:

Test configuration:



Test procedure:

1. The transmitter output was connected to the spectrum analyzer through an attenuator, the path loss was compensated to the results for each measurement.
2. Set to the maximum power setting and enable the EUT transmit continuously
3. Use the following spectrum analyzer settings:  
Span = approximately 2 to 3 times the 20 dB bandwidth, centered on a hopping channel  
RBW  $\geq$  1% of the 20 dB bandwidth, VBW  $\geq$  RBW  
Sweep = auto, Detector function = peak, Trace = max hold
4. Measure and record the results in the test report.

Test mode:

Refer to the clause 4.3

Test data:

Refer to the Appendix A

Result:

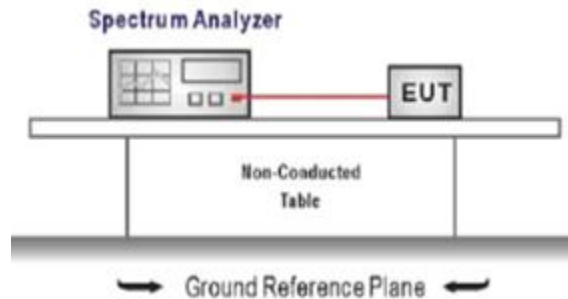
**Passed**

## 5.5. 99% Occupied Bandwidth

Limit:

--

Test configuration:



Test procedure:

1. Connect the antenna port(s) to the spectrum analyzer input.
2. Configure the spectrum analyzer as shown below (enter all losses between the transmitter output and the spectrum analyzer).  
Center Frequency = channel center frequency  
Span  $\geq 1.5 \times \text{OBW}$   
RBW = 1%~5%OBW, VBW  $\geq 3 \times \text{RBW}$   
Sweep time = auto couple  
Detector = Peak, Trace mode = max hold
3. Place the radio in continuous transmit mode, allow the trace to stabilize, view the transmitter waveform on the spectrum analyzer.

Test mode:

Refer to the clause 4.3

Test data:

Refer to the Appendix A

Result:

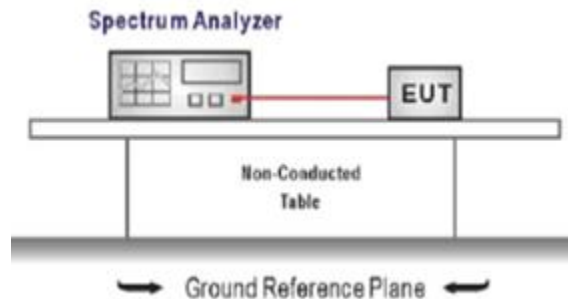
**Passed**

## 5.6. Power spectral density

### Limit:

For digitally modulated systems, the power spectral density conducted from the intentional radiator to the antenna shall not be greater than 8dBm in any 3 kHz band during any time interval of continuous transmission.

### Test configuration:



### Test procedure:

1. Use this procedure when the maximum peak conducted output power in the fundamental emission is used to demonstrate compliance.
2. Set the RBW  $\geq 3$  kHz.
3. Set the VBW  $\geq 3 \times$  RBW.
4. Set the span to 1.5 times the DTS channel bandwidth.
5. Detector = peak.
6. Sweep time = auto couple.
7. Trace mode = max hold.
8. Allow trace to fully stabilize.
9. Use the peak marker function to determine the maximum power level.
10. If measured value exceeds limit, reduce RBW (no less than 3 kHz) and repeat.
11. The resulting peak PSD level must be 8dBm.

### Test mode:

Refer to the clause 4.3

### Test data:

Refer to the Appendix A

### Result:

**Passed**



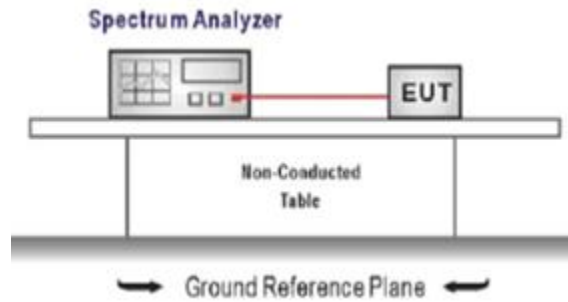
## 5.7. Conducted Band edge and Spurious Emission

### Limit:

#### **FCC CFR Title 47 Part 15 Subpart C Section 15.247 (d):**

In any 100 kHz bandwidth outside the frequency band in which the spread spectrum intentional radiator is operating, the radio frequency power that is produced by the intentional radiator shall be at least 20 dB below that in the 100 kHz bandwidth within the band that contains the highest level of the desired power, based on either an RF conducted or a radiated measurement.

### Test configuration:



### Test procedure:

1. Connect the antenna port(s) to the spectrum analyzer input.
2. Emission level measurement  
Set the center frequency and span to encompass frequency range to be measured  
RBW = 100 kHz, VBW  $\geq 3 \times$  RBW  
Detector = peak, Sweep time = auto couple, Trace mode = max hold  
Allow trace to fully stabilize  
Use the peak marker function to determine the maximum amplitude level.
3. Place the radio in continuous transmit mode, allow the trace to stabilize, view the transmitter waveform on the spectrum analyzer.
4. Ensure that the amplitude of all unwanted emission outside of the authorized frequency band excluding restricted frequency bands) are attenuated by at least the minimum requirements specified (at least 20 dB relative to the maximum in-band peak PSD level in 100 kHz). Report the three highest emission relative to the limit.

### Test mode:

Refer to the clause 4.3

### Test data:

Refer to the Appendix A

### Result:

**Passed**

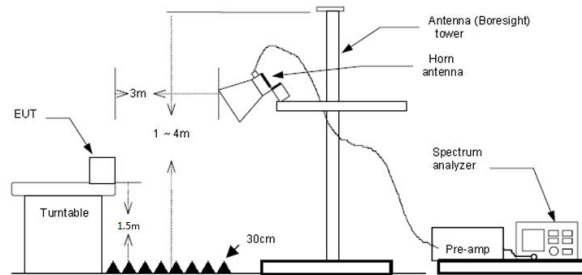
## 5.8. Radiated Band edge Emission

### Limit:

#### **FCC CFR Title 47 Part 15 Subpart C Section 15.247 (d):**

In any 100 kHz bandwidth outside the frequency band in which the spread spectrum or digitally modulated intentional radiator is operating, Radiated Emissions which fall in the restricted bands, as defined in §15.205(a), must also comply with the Radiated Emissions limits specified in §15.209(a) (see §15.205(c)).

### Test configuration:



### Test procedure:

1. The EUT was setup and tested according to ANSI C63.10 .
2. The EUT is placed on a turn table which is 1.5 meter above ground. The turn table is rotated 360 degrees to determine the position of the maximum emission level.
3. The EUT was positioned such that the distance from antenna to the EUT was 3 meters.
4. The antenna is scanned from 1 meter to 4 meters to find out the maximum emission level. This is repeated for both horizontal and vertical polarization of the antenna. In order to find the maximum emission, all of the interface cables were manipulated according to ANSI C63.10 on radiated measurement.
5. Use the following spectrum analyzer settings:
  - a) Span shall wide enough to fully capture the emission being measured
  - b) Set RBW=100kHz for <1GHz, VBW=3\*RBW, Sweep time=auto, Detector=peak, Trace=max hold
  - c) Set RBW=1MHz, VBW=3MHz for >1GHz, Sweep time=auto, Detector=peak, Trace=max hold for Peak measurement

For average measurement: use duty cycle correction factor method (DCCF)

Averager level = Peak level + DCCF

### Test mode:

Refer to the clause 4.3

### Result:

**Passed**

### Note:

- 1) Level= Reading + Factor; Factor =Antenna Factor+ Cable Loss- Preamp Factor
- 2) Margin = Limit - Level
- 3) Average measurement was not performed if peak level is lower than average limit
- 4) The other emission levels were very low against the limit.

Test channel:CH00									
Freq. (MHz)	Reading (dBuv)	Ant. Factor (dB/m)	Cable Factor (dB)	Pre-amplifier (dB)	Correction Factor (dB/m)	Limit (dBuV/m)	Margin (dB)	Remark	Polarity
2390.00	67.77	28.62	4.08	38.62	-5.92	74	12.15	Peak	Horizontal
2390.00	50.76	28.62	4.08	38.62	-5.92	54	9.16	Average	Horizontal
2390.00	69.26	28.62	4.08	38.62	-5.92	74	10.66	Peak	Vertical
2390.00	50.74	28.62	4.08	38.62	-5.92	54	9.18	Average	Vertical

Test channel:CH78									
Freq. (MHz)	Reading (dBuv)	Ant. Factor (dB/m)	Cable Factor (dB)	Pre-amplifier (dB)	Correction Factor (dB/m)	Limit (dBuV/m)	Margin (dB)	Remark	Polarity
2483.50	69.42	29.45	3.91	40.17	-6.81	74	11.39	Peak	Horizontal
2483.50	51.47	29.45	3.91	40.17	-6.81	54	9.34	Average	Horizontal
2483.50	67.56	29.45	3.91	40.17	-6.81	74	13.25	Peak	Vertical
2483.50	49.20	29.45	3.91	40.17	-6.81	54	11.61	Average	Vertical

## 5.9. Radiated Spurious Emission

### Limit:

#### FCC CFR Title 47 Part 15 Subpart C Section 15.209

Frequency	Limit (dBuV/m)	Value
0.009 MHz ~0.49 MHz	2400/F(kHz) @300m	Quasi-peak
0.49 MHz ~ 1.705 MHz	24000/F(kHz) @30m	Quasi-peak
1.705 MHz ~30 MHz	30 @30m	Quasi-peak

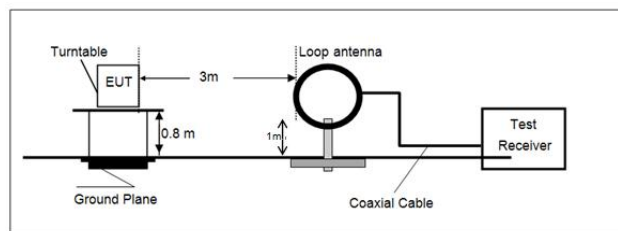
Limit dBuV/m @3m = Limit dBuV/m @300m + 40\*log(300/3)

Limit dBuV/m @3m = Limit dBuV/m @30m + 40\*log(30/3)

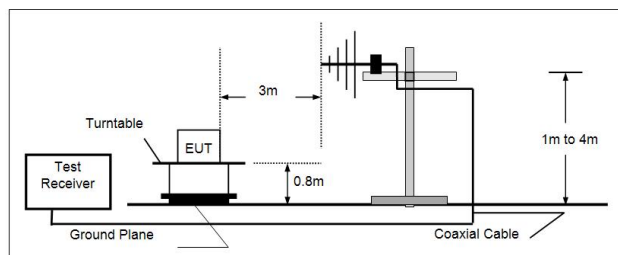
Frequency	Limit (dBuV/m @3m)	Value
30MHz~88MHz	40.00	Quasi-peak
88MHz~216MHz	43.50	Quasi-peak
216MHz~960MHz	46.00	Quasi-peak
960MHz~1GHz	54.00	Quasi-peak
Above 1GHz	54.00	Average
	74.00	Peak

### Test configuration:

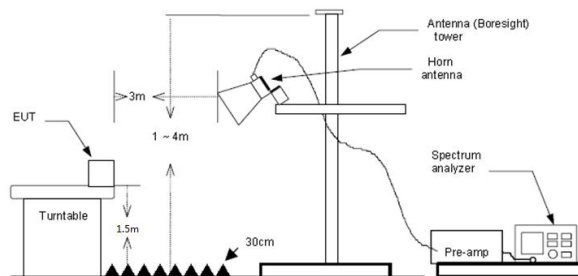
#### 9kHz~30MHz



#### 30 MHz ~ 1 GHz



#### Above 1 GHz



Test procedure:

1. The EUT was setup and tested according to ANSI C63.10.
2. The EUT is placed on a turn table which is 0.8 meter above ground for below 1 GHz, and 1.5 m for above 1 GHz. The turn table is rotated 360 degrees to determine the position of the maximum emission level.
3. The EUT was set 3 meters from the receiving antenna, which was mounted on the top of a variable height antenna tower.
4. For each suspected emission, the EUT was arranged to its worst case and then tune the Antenna tower (from 1 m to 4 m) and turntable (from 0 degree to 360 degrees) to find the maximum reading. A pre-amp and a high pass filter are used for the test in order to get better signal level to comply with the guidelines.
5. Set to the maximum power setting and enable the EUT transmit continuously.
6. Use the following spectrum analyzer settings
  - a) Span shall wide enough to fully capture the emission being measured;
  - b) Below 1 GHz:  
RBW=120 kHz, VBW=300 kHz, Sweep=auto, Detector function=peak, Trace=max hold;  
If the emission level of the EUT measured by the peak detector is 3 dB lower than the applicable limit, the peak emission level will be reported. Otherwise, the emission measurement will be repeated using the quasi-peak detector and reported.
  - c) Set RBW=1MHz, VBW=3MHz for >1GHz, Sweep time=auto, Detector=peak, Trace=max hold for Peak measurement  
For average measurement: use duty cycle correction factor method (DCCF)  
Averager level = Peak level + DCCF

Test mode:

Refer to the clause 4.3

Result:**Passed**

## Note:

- 1) Level= Reading + Factor/Transd; Factor/Transd =Antenna Factor+ Cable Loss- Preamp Factor
- 2) Margin = Limit – Level
- 3) Average measurement was not performed if peak level is lower than average limit(54 dBuV/m) for above 1GHz.
- 4) The other emission levels were very low against the limit.
- 5) This test was performed with EUT in X, Y, Z position and the worse case was found when EUT in X position.

**For 9 kHz ~ 30 MHz**

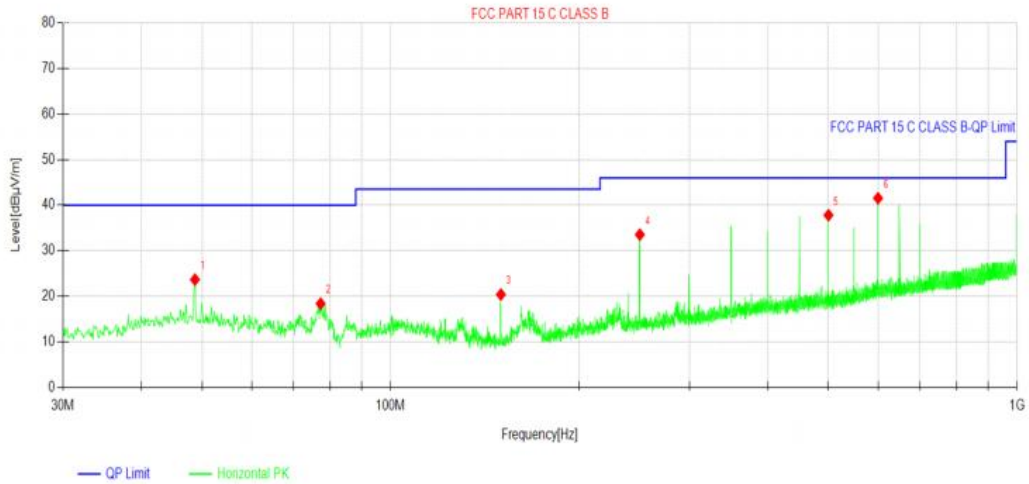
The EUT was pre-scanned this frequency band, found the radiated level 20dB lower than the limit, so don't show data on this report.

**For 30 MHz ~ 1000 MHz**

Have pre-scan all test channel, found 11B mode CH1 which it was worst case, so only show the worst case's data on this report.

Polarization:

Horizontal

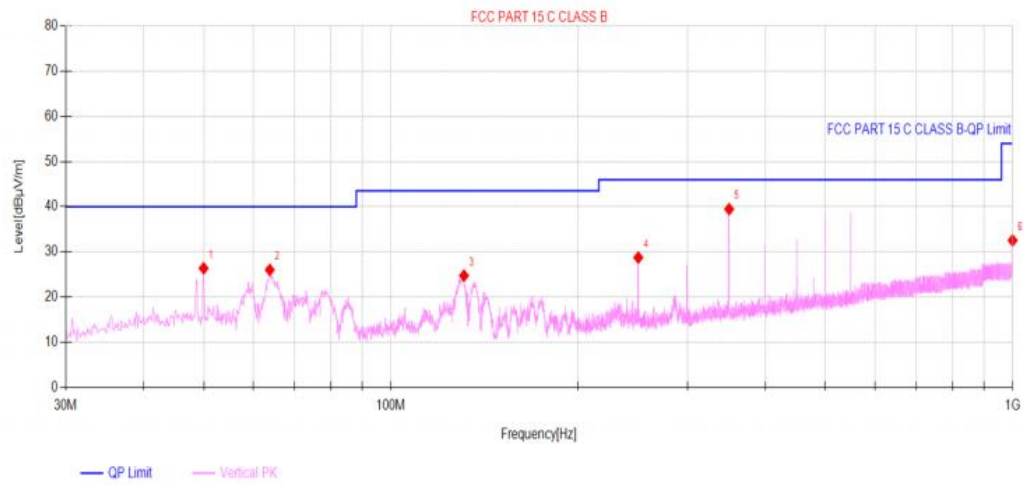


**Suspected Data List**

NO.	Freq. [MHz]	Level [dBμV/m]	Factor [dB]	Limit [dBμV/m]	Margin [dB]	Polarity	Verdict
1	48.7229	23.67	15.52	40.00	16.33	Horizontal	PASS
2	77.3407	18.40	10.20	40.00	21.60	Horizontal	PASS
3	150.001	20.40	10.50	43.50	23.10	Horizontal	PASS
4	250.018	33.55	14.65	46.00	12.45	Horizontal	PASS
5	500.012	37.81	19.71	46.00	8.19	Horizontal	PASS
6	600.029	41.54	21.91	46.00	4.46	Horizontal	PASS

Polarization:

Vertical



**Suspected Data List**

NO.	Freq. [MHz]	Level [dBμV/m]	Factor [dB]	Limit [dBμV/m]	Margin [dB]	Polarity	Verdict
1	49.984	26.38	15.51	40.00	13.62	Vertical	PASS
2	63.8564	26.03	13.11	40.00	13.97	Vertical	PASS
3	131.0841	24.76	10.48	43.50	18.74	Vertical	PASS
4	250.018	28.74	14.65	46.00	17.26	Vertical	PASS
5	350.035	39.47	17.15	46.00	6.53	Vertical	PASS
6	1000	32.54	26.26	54.00	21.46	Vertical	PASS

### For 1 GHz ~ 25 GHz

Test channel:CH00									
Freq. (MHz)	Reading (dBuv)	Ant. Factor (dB/m)	Cable Factor (dB)	Pre- amplifier (dB)	Correction Factor (dB/m)	Limit (dBuV/m)	Margin (dB)	Remark	Polarity
4824.00	67.63	31.33	4.23	38.62	-3.06	74	9.43	Peak	Horizontal
4824.00	50.17	31.33	4.23	38.62	-3.06	54	6.89	Average	Horizontal
4824.00	66.89	31.33	4.23	38.62	-3.06	74	10.17	Peak	Vertical
4824.00	50.87	31.33	4.23	38.62	-3.06	54	6.19	Average	Vertical

Test channel:CH19									
Freq. (MHz)	Reading (dBuv)	Ant. Factor (dB/m)	Cable Factor (dB)	Pre- amplifier (dB)	Correction Factor (dB/m)	Limit (dBuV/m)	Margin (dB)	Remark	Polarity
4874.00	69.93	30.26	4.09	38.29	-3.94	74	8.01	Peak	Horizontal
4874.00	50.33	30.26	4.09	38.29	-3.94	54	7.61	Average	Horizontal
4874.00	65.60	30.26	4.09	38.29	-3.94	74	12.34	Peak	Vertical
4874.00	49.04	30.26	4.09	38.29	-3.94	54	8.90	Average	Vertical

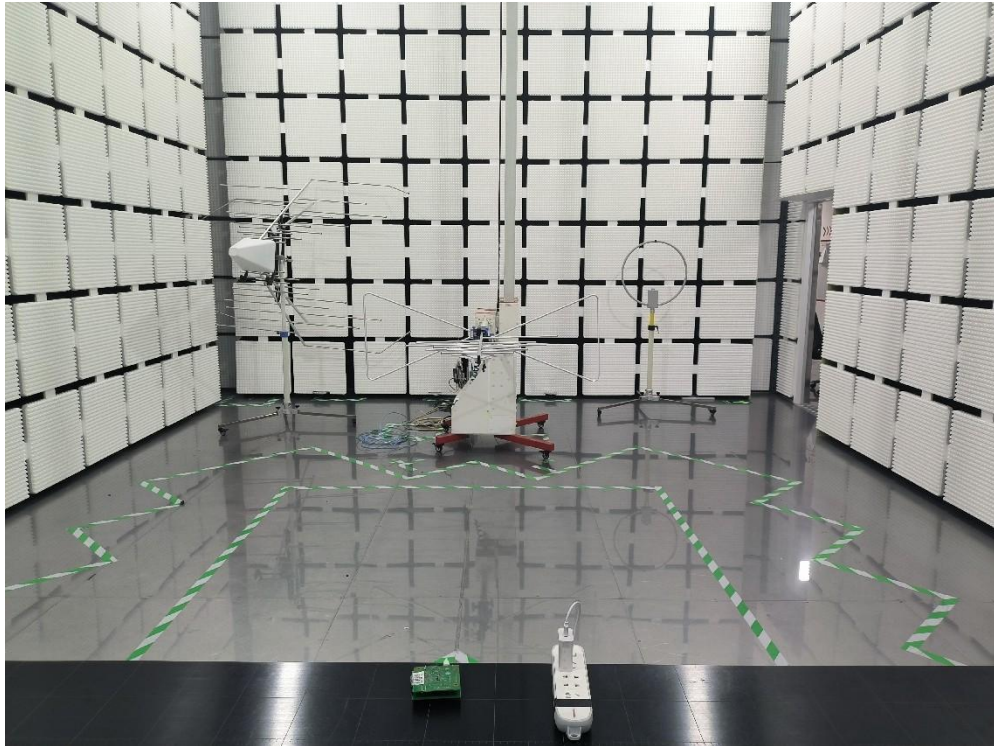
Test channel:CH39									
Freq. (MHz)	Reading (dBuv)	Ant. Factor (dB/m)	Cable Factor (dB)	Pre- amplifier (dB)	Correction Factor (dB/m)	Limit (dBuV/m)	Margin (dB)	Remark	Polarity
4924.00	62.45	31.97	4.11	38.47	-2.39	74	13.94	Peak	Horizontal
4924.00	50.92	31.97	4.11	38.47	-2.39	54	5.47	Average	Horizontal
4924.00	66.64	31.97	4.11	38.47	-2.39	74	9.75	Peak	Vertical
4924.00	50.03	31.97	4.11	38.47	-2.39	54	6.36	Average	Vertical



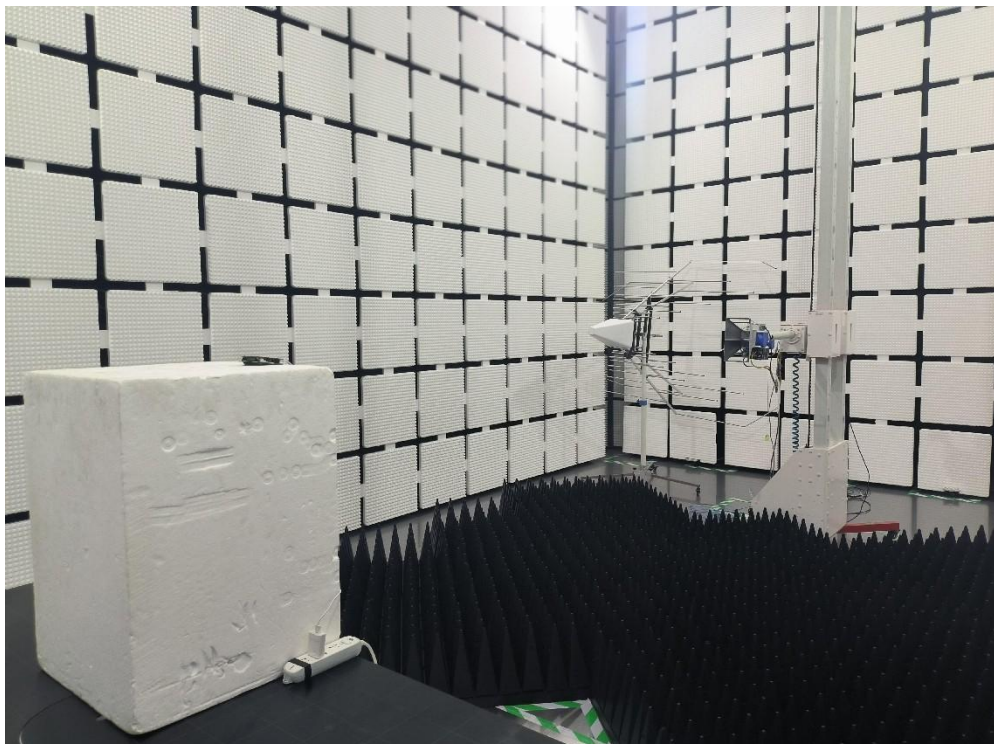
## 6. TEST SETUP PHOTOS

Radiated Emission

Below 1GHz:



Above 1GHz:



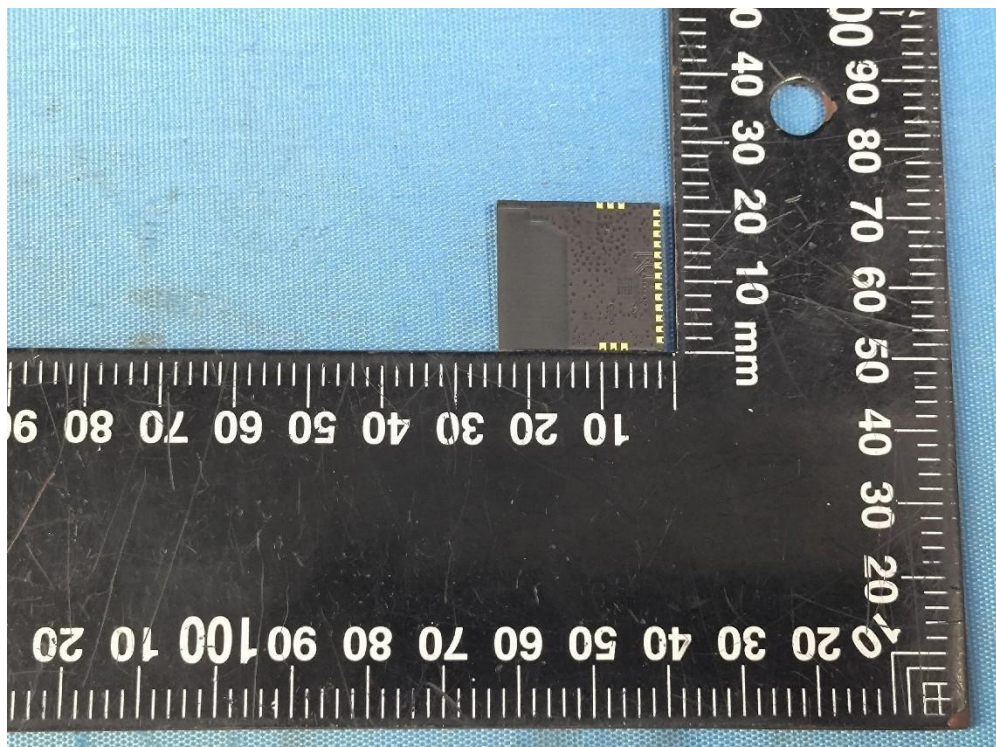
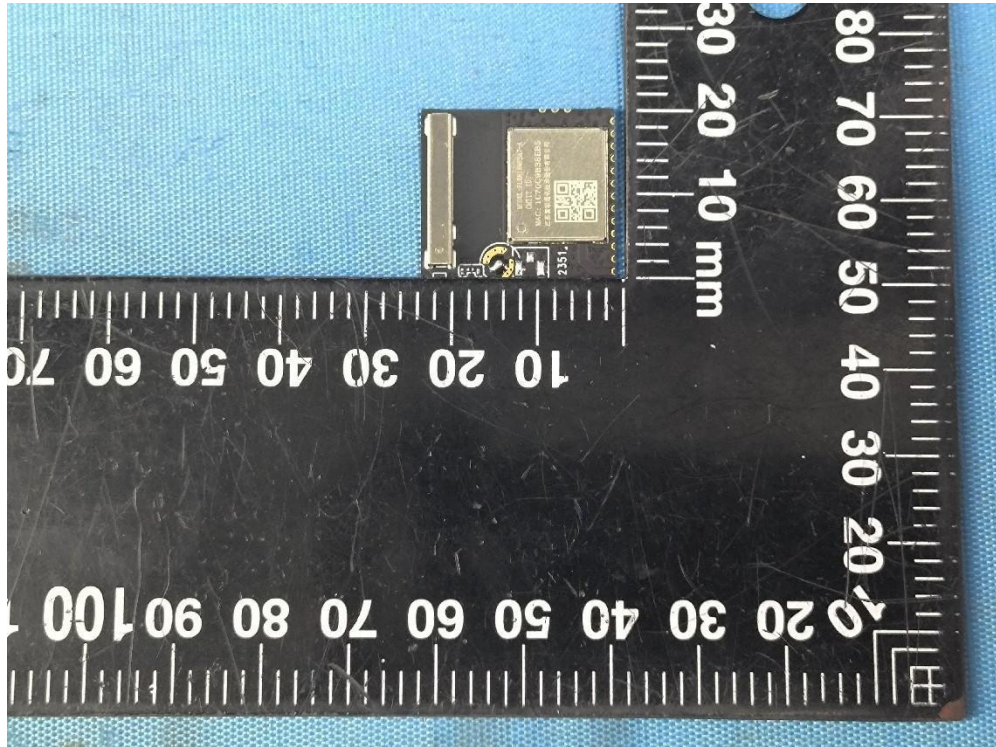
## AC Conducted Emission





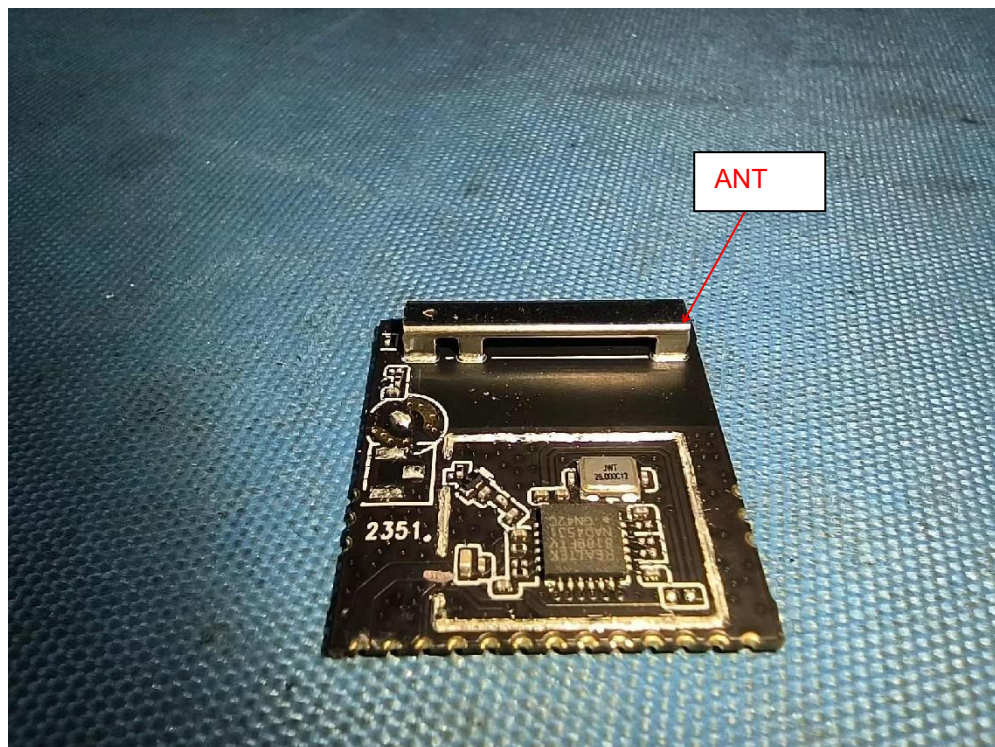
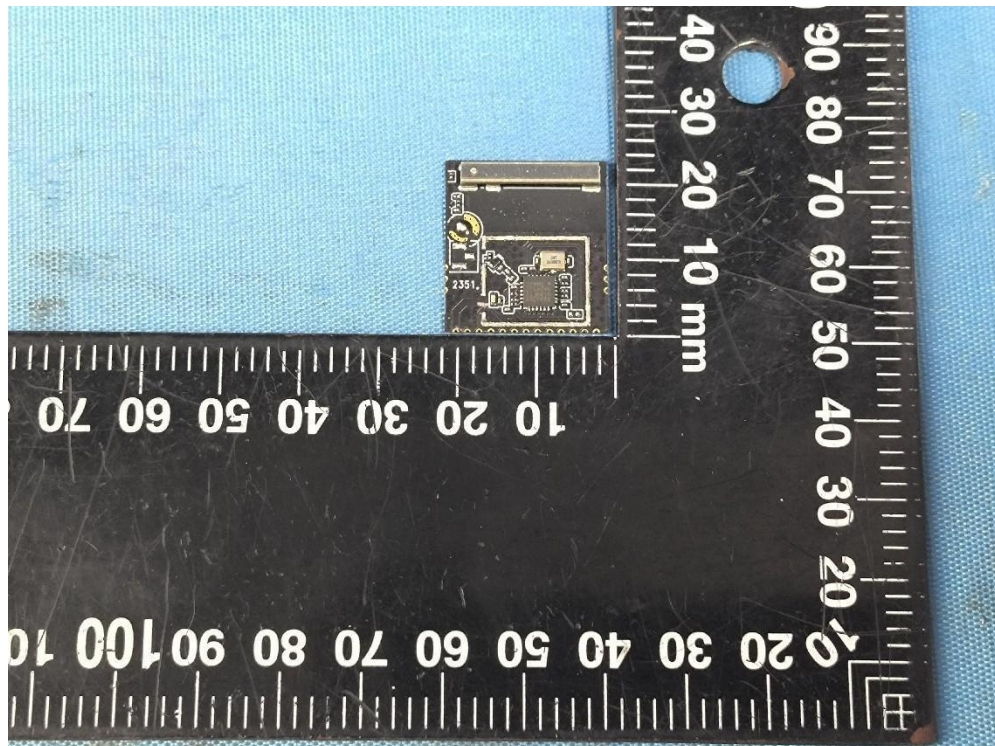
## 7. EXTERNAL AND INTERNAL PHOTOS

### 7.1. External Photos





## 7.2 Internal photos



-----End of the report-----