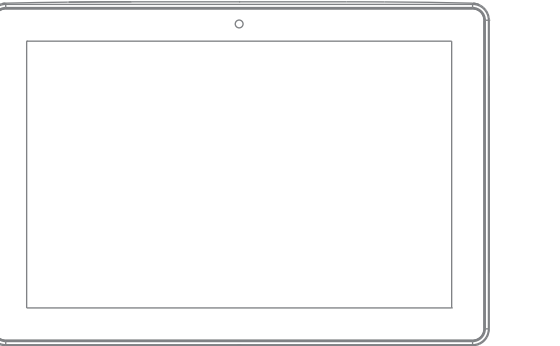


10.1" 13.3" 15.6"	MEETING ROOM
	INTERACTIVE DIGITAL SIGNAGE



# User Manual

tices

[illegible]

to holes and ventilation slots.


Do not use the device to store or place any objects filled with liquids on or near the device.

Do not use the device in the following situations:

- Do not use the device in the presence of flammable or explosive substances, such as lighted candles, on or near this product.
- Do not use the device in environments where the temperature is above 50 °C (122 °F) or below -10 degrees celsius.
- Do not use the device or place heavy or sharp objects on the device.
- Do not use the device in a location not specified by the manufacturer.
- Do not use the device in the presence of benzene, diluents, and other chemicals.

For more information, please refer to the user manual for this product yourself. Always use a qualified service agent to perform repairs.

Power adapter



## ES

Following are present when you unpack your  
DIGITAL SIGNAGE



## ROOM INTERACTIVE DIGITAL SIGNAGE

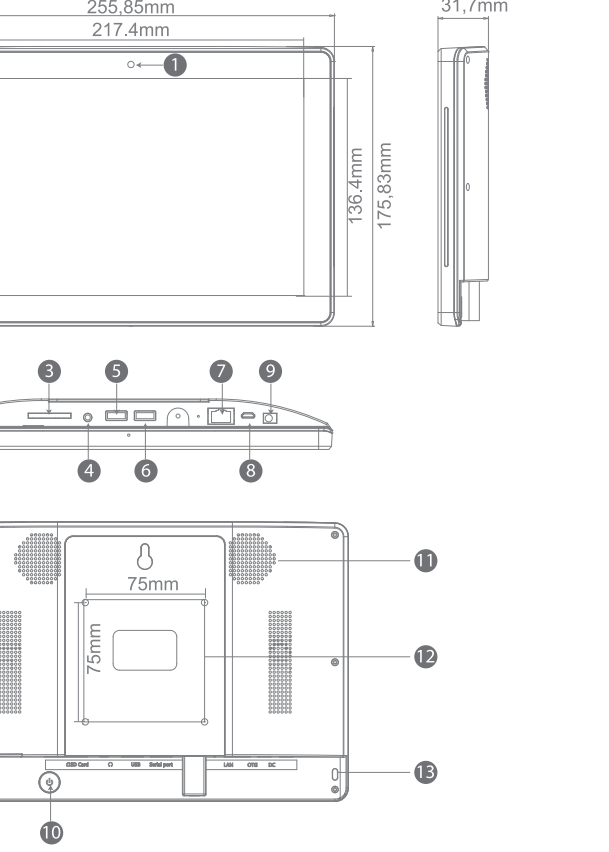


Chapter User man

## Features

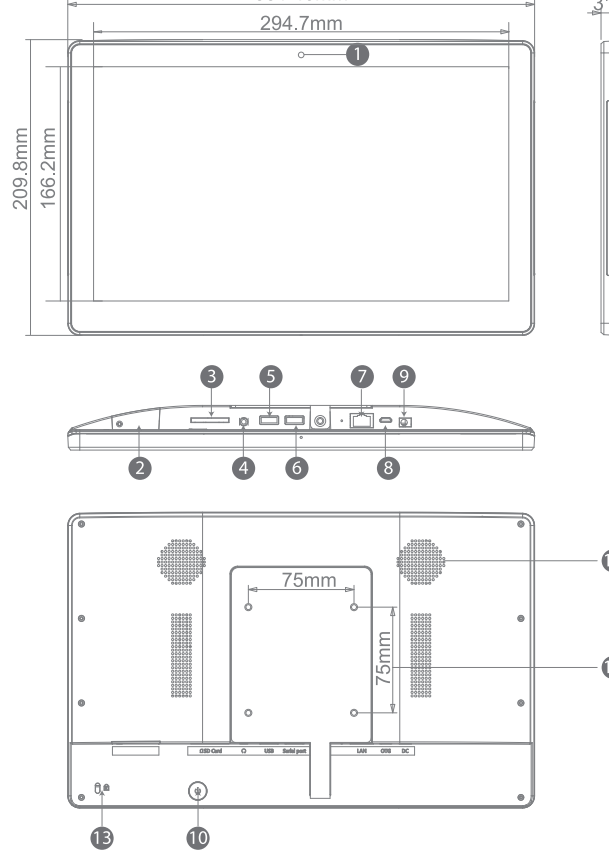
- 1.1"LCD panel resolution1280\*800/13.3" 15.6"LCD panel resolution1920\*1080  
RK3288 Quad core cortex A17, RK3399 Dual-core A72+quad-core A53 ,  
RK3566/3568 Quad core cortex A55  
RAM 2GB  
Internal memory 16GB  
Android 8.1/10.0(3288) , Android 7.1/9.0/10.0(3399) ,  
Android 11(3566/3568)  
10-Point capacitive touch  
2.0M/P, 5M/P, front camera  
Bluetooth 4.0  
WiFi 802.11b/g/n  
RJ45 ethernet with POE  
SIM card (Optional )  
SD card  
USB host  
USB for serial(RS232 format)  
Micro USB OTG  
POE IEEE802.3at,POE+,class 4, 25.5W  
3.5mm earphone + microphone  
NFC 13.56MHz, ISO14443A/ISO14443B/ISO 15693/Mifare classic/  
Sony felica (Optional )  
2\*1.5W speaker  
VESAs: 75x75mm(10.1" 13.3")/VESAs: 100x100mm(15.6" )  
LED Light bar , RGB  
Adapter:12V/1.5A(10.1" 13.3")/Adapter:12V/2A(15.6")

## Superior Components



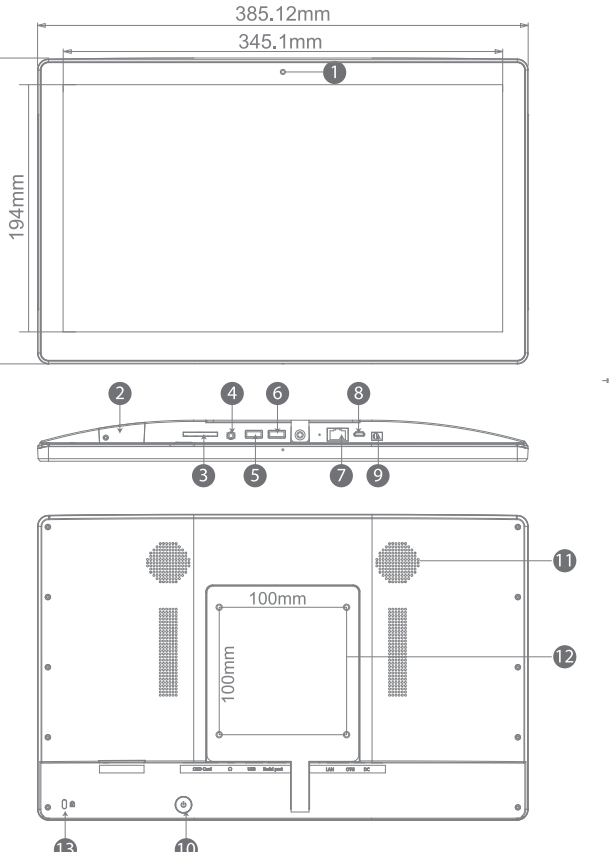
Function	No.	Function
Camera	8	Micro USB OTG
SD Card (Optional)	9	DC in power supply port
Card	10	Power button
3.5mm audio jack with microphone	11	Speaker
USB host	12	VESA 75*75mm
Serial port	13	Kensington Lock
45 with POE		

### 13.3" Exterior Components



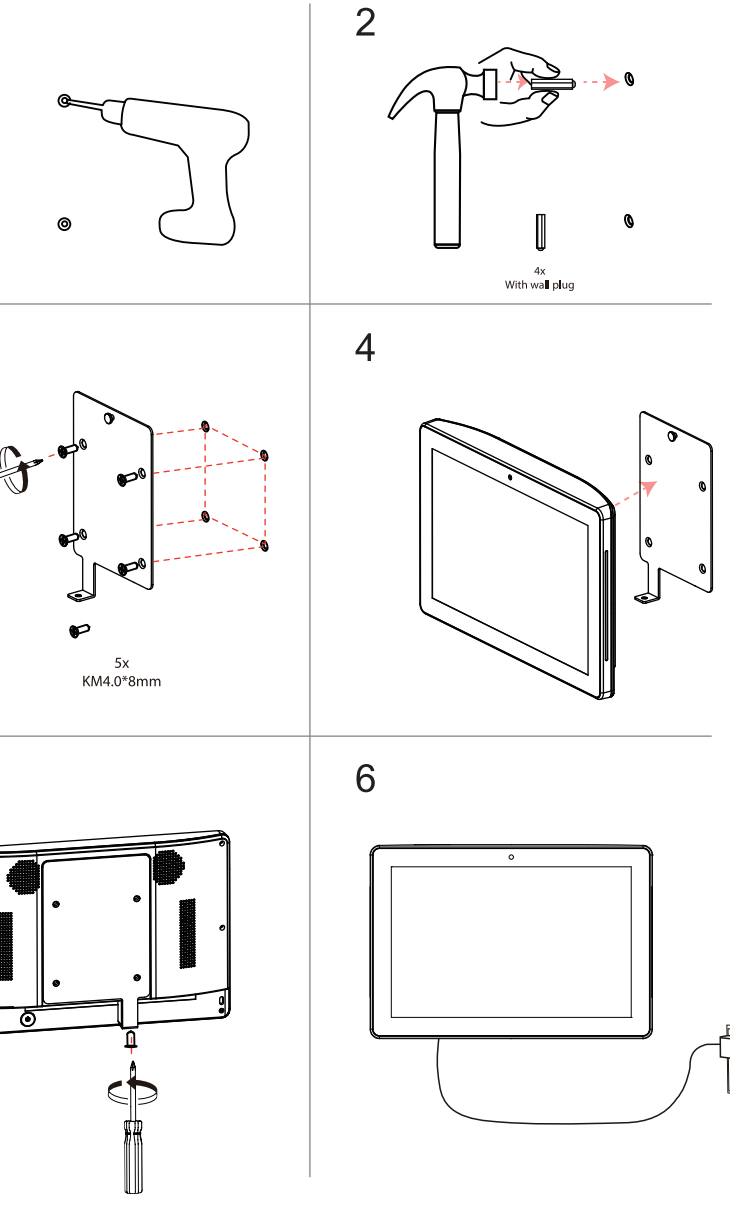
No.	Function	No.	Function
1	Camera	8	Micro USB OTG
2	SIM Card ( Optional )	9	DC in power supply
3	SD Card	10	Power button
4	3.5mm audio jack with microphone	11	Speaker
5	USB host	12	VESA 75*75mm
6	Serial port	13	Kensington Lock
7	RJ45 with POE		

## 15.6" Exterior Components



No.	Function	No.	Function
1	Camera	8	Micro USB OTG
2	SIM Card ( Optional )	9	DC in power supply
3	SD Card	10	Power button
4	3.5mm audio jack with microphone	11	Speaker
5	USB host	12	VESA 100*100mm
6	Serial port	13	Kensington Lock
7	RJ45 with POE		

## ation instructions for wall hanging



This symbol on the product or in the instructions means that your electrical/electronic equipment should be disposed of at the end of its life separately from your household waste. There are separate collection systems for recycling in your country. For more information, please contact the local authority or your retailer where you purchased the product.

FCC STATEMENT :  
This device complies with Part 15 of the FCC Rules. Operation is subject to the following two conditions:  
(1) This device may not cause harmful interference, and  
(2) This device must accept any interference received, including interference that may cause undesired operation.  
Warning: Changes or modifications not expressly approved by the party responsible for compliance could void the user's authority to operate the equipment.

NOTE: This equipment has been tested and found to comply with the limits for a Class B digital device, pursuant to Part 15 of the FCC Rules. These limits are designed to provide reasonable protection against harmful interference to radio communications. This equipment generates uses and can radiate radio frequency energy and, if not installed and used in accordance with the instructions, may cause harmful interference to radio communications. However, there is no guarantee that interference will not occur in a particular installation. If this equipment does cause harmful interference to radio or television reception, which can be determined by turning the equipment off and on, the user is encouraged to try to correct the interference by one or more of the following measures:

- Reorient or relocate the receiving antenna.
- Increase the separation between the equipment and receiver.
- Connect the equipment into an outlet on a circuit different from that to which the receiver is connected.
- Consult the dealer or an experienced radio/TV technician for help.

FCC Radiation Exposure Statement:  
This equipment complies with FCC radiation exposure limits set forth for an uncontrolled environment.  
This equipment should be installed and operated with minimum distance 20cm between the radiator & your body.