



## SAR MEASUREMENT REPORT

**FCC ID:** 2A8TK-9260NGW  
**Applicant:** G-TECH INSTRUMENTS INC.  
**Product:** Intel® Wireless-AC 9260  
**Model No.:** 9260NGW  
**Brand Name:** G-TECH  
**FCC Rule Part(s):** FCC 47 CFR Part 2.1093  
**Result:** Complies  
**Received Date:** 2024-07-01  
**Test Date:** 2024-07-05 ~ 2024-07-07

**Reviewed By:**

Yuri Li

**Approved By:**

Robin Wu



The test results relate only to the samples tested.

This equipment has been shown to be capable of compliance with the applicable technical standards as indicated in the measurement report and was tested in accordance with the measurement procedures specified in IEEE1528, KDB 447498 and KDB 865664. Test results reported herein relate only to the item(s) tested.

The test report shall not be reproduced except in full without the written approval of MRT Technology (Suzhou) Co., Ltd.

---

### Revision History

Report No.	Version	Description	Issue Date	Note
2407RSU005-U1	V01	Initial Report	2024-12-10	Valid

## CONTENTS

Description	Page
<b>1. General Information .....</b>	<b>5</b>
1.1. Applicant .....	5
1.2. Manufacturer .....	5
1.3. Testing Facility .....	5
1.4. Product Information .....	6
1.5. Radio Specification under Test .....	7
1.6. Antennas Details .....	8
<b>2. Summary of Test Result .....</b>	<b>9</b>
2.1. Test Standards .....	9
2.2. Environment Condition .....	9
2.3. RF Exposure Limits .....	9
2.4. Test Result Summary .....	10
<b>3. Specific Absorption Rate (SAR) .....</b>	<b>11</b>
3.1. Introduction .....	11
3.2. Definition .....	11
<b>4. DASY6 Measurement System .....</b>	<b>12</b>
4.1. Introduction .....	12
4.2. DASY6 Measurement System Diagram .....	12
4.3. System Components Details .....	13
<b>5. The SAR Measurement Procedure .....</b>	<b>24</b>
5.1. Measurement Process Diagram .....	24
5.2. Test Position Definition .....	25
5.3. Test Procedure .....	28
<b>6. System Verificaiton .....</b>	<b>31</b>
6.1. SAR Tissue Check .....	31
6.2. SAR System Check .....	34
<b>7. Analysis and Results .....</b>	<b>36</b>
7.1. Antenna Location .....	36
7.2. Conducted Power .....	37
7.3. SAR Exclusion Analysis .....	41
7.4. SAR Test Results .....	42
7.5. Estimated SAR Calculation .....	45
<b>8. Simultaneous Transmission Analysis .....</b>	<b>46</b>
<b>9. Measuring Instrument .....</b>	<b>48</b>
<b>10. Measurement Uncertainty .....</b>	<b>49</b>

<b>Annex A - System Check Result .....</b>	<b>51</b>
<b>Annex B - Test Data Plots .....</b>	<b>54</b>
<b>Annex C - SAR Test Setup Photograph.....</b>	<b>61</b>
<b>Annex D - EUT Photograph .....</b>	<b>62</b>
<b>Annex E - Equipment Calibration Report.....</b>	<b>63</b>

## 1. General Information

### 1.1. Applicant

G-TECH INSTRUMENTS INC.

2F.-2, No. 83, Sec. 2, Gongdao 5th Rd., East Dist., Hsinchu City 30070, Taiwan (R.O.C.)

## 1.2. Manufacturer

G-TECH INSTRUMENTS INC.

2F.-2, No. 83, Sec. 2, Gongdao 5th Rd., East Dist., Hsinchu City 30070, Taiwan (R.O.C.)

### 1.3. Testing Facility

<input checked="" type="checkbox"/>	<b>Test Site – MRT Suzhou Laboratory</b>		
	<b>Laboratory Location (Suzhou - Wuzhong)</b> D8 Building, No.2 Tian'edang Rd., Wuzhong Economic Development Zone, Suzhou, China		
	<b>Laboratory Location (Suzhou - SIP)</b> 4b Building, Liando U Valley, No.200 Xingpu Rd., Shengpu Town, Suzhou Industrial Park, China		
	<b>Laboratory Accreditations</b>		
	A2LA: 3628.01 FCC: CN1166 VCCI:	CNAS: L10551 ISED: CN0001	
	<input type="checkbox"/> R-20025 <input type="checkbox"/> R-20141	<input type="checkbox"/> G-20034 <input type="checkbox"/> G-20134	<input type="checkbox"/> C-20020 <input type="checkbox"/> C-20103
<input type="checkbox"/>	<b>Test Site – MRT Shenzhen Laboratory</b>		
	<b>Laboratory Location (Shenzhen)</b> 1G, Building A, Junxiangda Building, Zhongshanyuan Road West, Nanshan District, Shenzhen, China		
	<b>Laboratory Accreditations</b>		
	A2LA: 3628.02 FCC: CN1284	CNAS: L10551 ISED: CN0105	
<input type="checkbox"/>	<b>Test Site – MRT Taiwan Laboratory</b>		
	<b>Laboratory Location (Taiwan)</b> No. 38, Fuxing 2nd Rd., Guishan Dist., Taoyuan City 333, Taiwan (R.O.C.)		
	<b>Laboratory Accreditations</b>		
	TAF: 3261 FCC: 291082, TW3261	ISED: TW3261	

#### 1.4. Product Information

Product Name	Intel® Wireless-AC 9260
Model No.	9260NGW
Serial No.	2403133
Brand Name	G-TECH
Antenna Information	Refer to section 1.6
EUT Type	Portable Device
Exposure Category	General Population/Uncontrolled Exposure
Accessories	
Rechargeable Li-ion Battery	Model No.: GT169-EX Capacitance: 4400mAh 31.68Wh Rated Voltage: 7.2VDC
Adapter	Model No.: FSP060-DHAN3 Input Power: 100-240V ~, 1.8A, 50-60Hz Output Power: 12.0V=5.0A 60.0W
Notes: <ol style="list-style-type: none"> <li>1. This case is to add Host (Product Name: Portable Analyzer / Model No.: CMVA 90-EX, CMVA 90, impaq Plus-EX, impaq Plus), This C2PC establishes portable category SAR conditions, The Original Granted date: 2024/8/2, FCC ID: 2A8TK-9260NGW.</li> <li>2. The model difference is only for trade name different.</li> <li>3. The information of EUT was provided by the manufacturer, and the accuracy of the information shall be the responsibility of the manufacturer.</li> </ol>	

### 1.5. Radio Specification under Test

Wi-Fi Specification	
Frequency Range	<u>For 2.4GHz Wi-Fi</u> 802.11b/g/n-HT20: 2412 ~ 2462 MHz 802.11n-HT40: 2422 ~ 2452 MHz <u>For 5GHz Wi-Fi</u> 802.11a/n-HT20/ac-VHT20: 5180~5240 MHz, 5745~5825 MHz 802.11n-HT40/ac-VHT40: 5190~5230 MHz, 5755~5795 MHz 802.11ac-VHT80: 5210 MHz, 5775MHz
Channel Number	<u>For 2.4GHz Wi-Fi</u> 802.11b/g/n-HT20: 11 802.11n-HT40: 7 <u>For 5GHz Wi-Fi</u> 802.11a/n-HT20/ac-VHT20: 9 802.11n-HT40/ac-VHT40: 4 802.11ac-VHT80/ax-HE80: 2
Type of Modulation	802.11b: DSSS 802.11a/g/n/ac: OFDM
Data Rate	802.11b: 1/2/5.5/11Mbps 802.11a/g: 6/9/12/18/24/36/48/54Mbps 802.11n: up to 300Mbps 802.11ac: up to 866.7Mbps
Bluetooth Specification	
Frequency Range	2402MHz~ 2480MHz
Channel Number	For Bluetooth: 79 For BT-LE: 40
Channel Spacing	For Bluetooth: 1MHz For BT-LE: 2MHz
Type of Modulation	For Bluetooth: 1Mbps (GFSK), 2Mbps (Pi/4 DQPSK), 3Mbps (8DPSK) For BT-LE: 1Mbps (GFSK)
NFC Specification	
Frequency Range	13.56MHz
Channel Number	1
Type of Modulation	ASK
Antenna Type	Loop Antenna

### 1.6. Antennas Details

Operating Condition	AUX ANT	802.11b/g/n for 2.4GHz Wi-Fi (1Tx, 1Rx) 802.11a/n/ac for 5GHz Wi-Fi (1Tx, 1Rx) Bluetooth BR/EDR/LE (1Tx, 1Rx)
	Main ANT	802.11b/g/n for 2.4GHz Wi-Fi (1Tx, 1Rx) 802.11a/n/ac for 5GHz Wi-Fi (1Tx, 1Rx)
Antenna Type	PCB Antenna	
Simultaneously Transmitting Scenarios	Wi-Fi (AUT + Main) cannot transmit simultaneously; Bluetooth (AUX ANT) can transmit simultaneously with Wi-Fi (Main ANT).	



## 2. Summary of Test Result

### 2.1. Test Standards

No.	Identity	Document Title
1	47 CFR Part 2.1093	Radiofrequency radiation exposure evaluation: portable devices
2	IEEE 1528-2013	IEEE Recommended Practice for Determining the Peak Spatial-Average Specific Absorption Rate (SAR) in the Human Head from Wireless Communications Devices: Measurement Techniques
3	IEEE C95.1-2005	IEEE Standard for Safety Levels with Respect to Human Exposure to Radio Frequency Electromagnetic Fields, 3 kHz to 300 GHz
4	KDB 447498 D01 v06	General RF Exposure Guidance
5	KDB 865664 D01 v01r04	SAR Measurement 100 MHz to 6 GHz
6	KDB 865664 D02 v01r02	RF Exposure Reporting
7	KDB 616217 D04 v01r02	SAR for laptop and tablet
8	KDB 248227 D01 v02r02	SAR Guidance for IEEE 802.11 (Wi-Fi) Transmitter

### 2.2. Environment Condition

Ambient Temperature	20.5°C~24.0°C
Temperature of Simulant	20.0°C~23.5°C
Relative Humidity	38%RH ~55%RH

### 2.3. RF Exposure Limits

Human Exposure	Basic restrictions for electric, magnetic and electromagnetic fields. (Unit in mW/g or W/kg)
Spatial Peak SAR <sup>1</sup> (Head and Body)	1.60
Spatial Average SAR <sup>2</sup> (Whole Body)	0.08
Spatial Peak SAR <sup>3</sup> (Arms and Legs)	4.00

Notes:

1. The Spatial Peak value of the SAR averaged over any 1gram of tissue (defined as a tissue volume in the shape of a cube) and over the appropriate averaging time.
2. The Spatial Average value of the SAR averaged over the whole body.
3. The Spatial Peak value of the SAR averaged over any 1 gram of tissue (defined as a tissue volume in the shape of a cube) and over appropriate averaging time.

## 2.4. Test Result Summary

### Worst SAR List

Antenna	Highest Reported SAR	Body 1g SAR (W/kg)
AUX	DTS Band Wi-Fi	1.09
	UNII-1 Band Wi-Fi	1.18
	U-NII-3 Band Wi-Fi	1.12
	Bluetooth	0.13
Main	DTS Band Wi-Fi	0.78
	UNII-1 Band Wi-Fi	1.18
	U-NII-3 Band Wi-Fi	1.11

### Highest Simultaneous SAR

Highest Simultaneous SAR	Body 1g SAR (W/kg)
Wi-Fi MIMO + NFC	1.59
Wi-Fi + BT + NFC	1.24

### 3. Specific Absorption Rate (SAR)

#### 3.1. Introduction

SAR is related to the rate at which energy is absorbed per unit mass in an object exposed to a radio field. The SAR distribution in a biological body is complicated and is usually carried out by experimental techniques or numerical modeling. The standard recommends limits for two tiers of groups, occupational /controlled and general population/uncontrolled, based on a person's awareness and ability to exercise control over his or her exposure. In general, occupational/controlled exposure limits are higher than the limits for general population/uncontrolled.

#### 3.2. Definition

The SAR in the tissue-equivalent liquid can be determined by the rate of temperature increase or by E-field measurements, according to Formulas (1) or (2):

$$SAR = \frac{\sigma E^2}{\rho} \quad (1)$$

$$SAR = c_h \left. \frac{dT}{dt} \right|_{t=0} \quad (2)$$

where

SAR is the specific absorption rate in W/kg;

E is the rms value of the electric field strength in the tissue medium in V/m;

$\sigma$  is the electrical conductivity of the tissue medium in S/m;

$\rho$  is the mass density of the tissue medium in kg/m<sup>3</sup>;

$c_h$  is the specific heat capacity of the tissue medium in J/(kg K);

$\left. \frac{dT}{dt} \right|_{t=0}$  is the initial time derivative of temperature in the tissue medium in K/s.

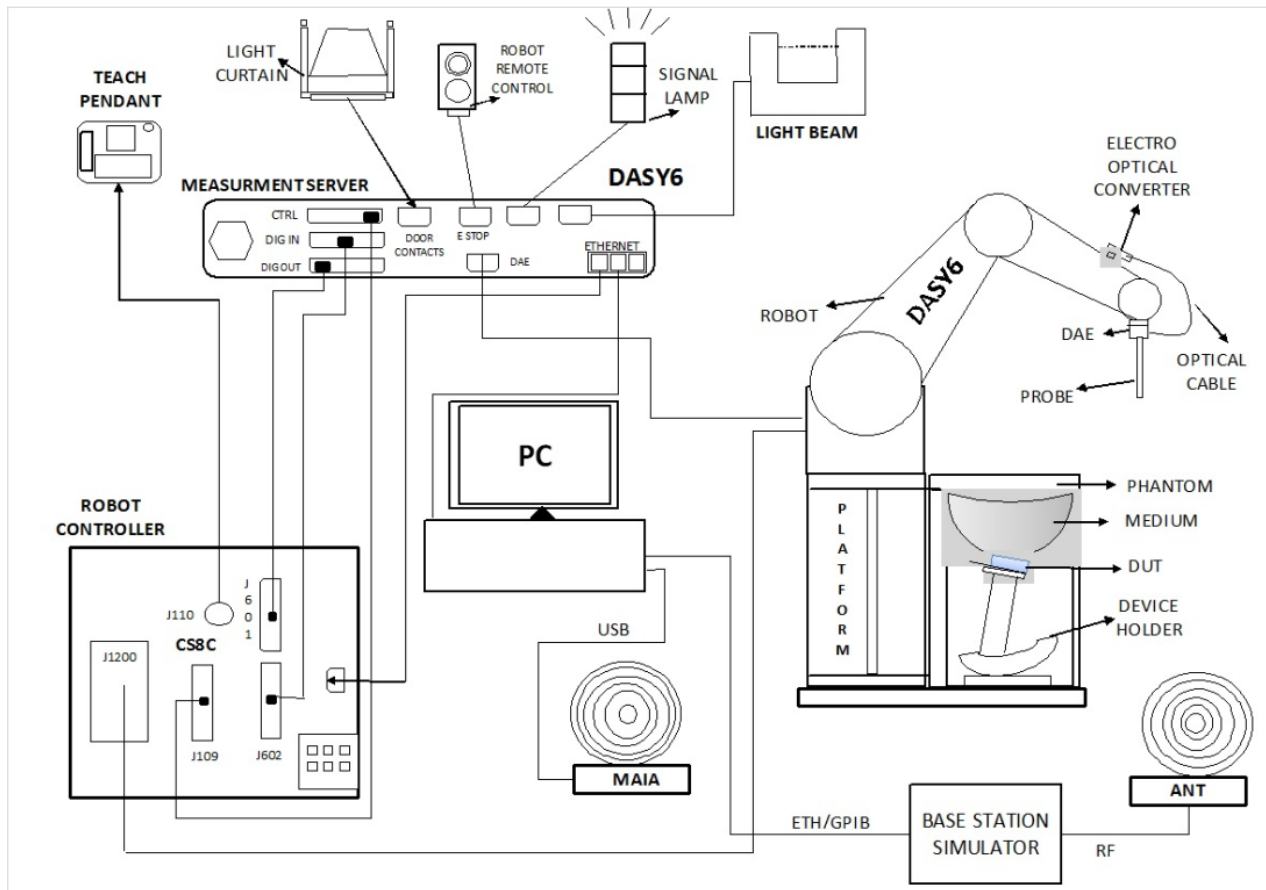
## 4. DASY6 Measurement System

### 4.1. Introduction

DASY6 is the latest generation of the Dosimetric Assessment System optimized for specific absorption rate (SAR) measurements, SAR compliance. DASY6 builds on the power of our industry - leading dosimetric and near-field evaluation system, DASY52. Running on a significantly more robust platform and a more powerful measurement server, DASY6 offers much faster scanning with no sacrifice of measurement precision. All hardware and software are fully compatible with DASY52. The new system seamlessly integrates two software solutions, the novel cDASY V6.6 - optimized for SAR compliance testing to significantly reduce SAR assessment costs - and the widely used DASY V5.2 for generalized near-field evaluations with maximized flexibility.

### 4.2. DASY6 Measurement System Diagram

The DASY6 system in cDASY6/DASY5 V5.2 SAR Configuration is shown below:



The System consist of the following components:

DASY6 Measurement Server, Data Acquisition Electronics (DAE), Probes, Light-Beam Unit, Phantoms, Media, Device Holder for SAM-Twin Phantom, Laptop Extension Kit to Mounting Device, Robot System Platform & Pedestal, Verification of the Parameters with the Dielectric Assessment Kit (DAK), Modulation and Interference Analyzer (MAIA), Omni-Directional Ultra-Wideband Antenna (ANT), cDASY6 software, DASY5 NEO software and SEMCAD data evaluation software.

### 4.3. System Components Details

#### DASY6 Platforms MP6E-TX60L

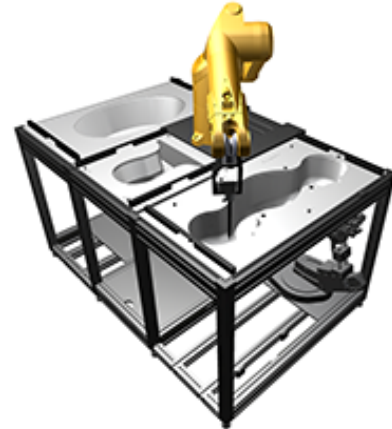
MP6E-TX60L platform is a compact cost-effective platform based on TX60L. It consists of:

- a stable non-metallic platform for the TX60L robot
- a frame for two standard-size phantoms ( $1.0 \times 0.5$  m)
- a frame for one half-size phantom ( $0.5 \times 0.5$  m)

It includes two easily moveable trolleys for the phone and tablet/computer positioner and two platforms for positioning dipoles and other antennas.

**Material** The beams consist of a composite of wood and epoxy (permittivity of 3.3 and loss tangent of  $<0.07$ )

**Size** The footprint of the platform is 1590 mm  $\times$  1060 mm.



#### Robots -TX60L

The MRT DASY6 system uses the high-precision industrial robots TX60L from Staubli SA (France). The TX robot family - the successor of the well-known RX robot family - continues to offer the features important for DASY6 applications:

- High precision (repeatability 0.02mm)
- High reliability (industrial design)
- Low maintenance costs (virtually maintenance-free as all gears are direct drive, no belt drives)
- Jerk-free straight movements (brushless synchron motors, no stepper motors)
- Low extremely low frequency (ELF) interference (motor control fields are shielded by the closed metallic construction)

The robots are controlled by the Staubli CS8c robot controllers. All information regarding the use and maintenance of the robot arm and the robot controller is provided on CDs delivered with the robot. Paper manuals are available directly from Staubli upon request.



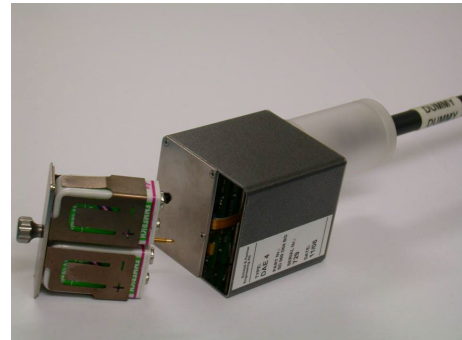
### DASY6 Measurement Server

The DASY6 measurement server is based on a PC/104 CPU board with a 400MHz intel ULV Celeron, 128MB chip-disk and 128MB RAM. The necessary circuits for communication with the DAE4 electronics box, as well as the 16-bit AD converter system for optical detection and digital I/O interface are contained on the DASY6 I/O board, which is directly connected to the PC/104 bus of the CPU board. The measurement server performs all real-time data evaluations of field measurements and surface detection, controls robot movements, and handles safety operations.



### Data Acquisition Electronics (DAE)

The data acquisition electronics (DAE4) consist of a highly sensitive electrometer-grade preamplifier with auto-zeroing, a channel and gain-switching multiplexer, a fast 16-bit AD-converter, and a command decoder with a control logic unit. Transmission to the measurement server is accomplished through an optical downlink for data and status information, as well as an optical uplink for commands and the clock.



## Probes

### E-Field Probe(EX3DV4)

The SAR measurement is conducted with the dosimetric probe manufactured by SPEAG. The probe is specially designed and calibrated for use in liquid with high permittivity. The dosimetric probe has special calibration in liquid at different frequency. SPEAG conducts the probe calibration in compliance with international and national standards (e.g. IEEE 1528, EN 62209-1, IEC 62209, etc.) under ISO 17025.

Construction:

Symmetric design with triangular core Built-in shielding against static charges PEEK enclosure material (resistant to organic solvents, e.g., DGBE)

Frequency: 4 MHz ~ 10 GHz

Linearity:  $\pm 0.2$  dB (30 MHz ~ 10 GHz)

Directivity:

$\pm 0.1$  dB in TSL (rotation around probe axis)

$\pm 0.3$  dB in TSL (rotation normal to probe axis)

Dynamic Range: 10  $\mu$ W/g to 100 mW/g; Linearity:  $\pm 0.2$  dB (noise: typically  $< 1$   $\mu$ W/g)

Dimensions:

Overall length: 337 mm (Tip: 20 mm)

Tip diameter: 2.5 mm (Body: 12 mm)

Typical distance from probe tip to dipole centers: 1 mm

Applications:

High precision dosimetric measurements in any exposure scenario (e.g., very strong gradient fields); the only probe that enables compliance testing for frequencies up to 6 GHz with precision of better than 30%.



### MSTV1 (Mother Scan Teaching V1) Electronics & TP6V2 (Teaching Probe 6V2) Probe

MSTV1 (Mother Scan Teaching V1) electronics together with the TP6V2 (Teaching Probe 6V2) probe is used for mother scan of DASY6 system. This probe uses a 3D Renishaw LP2 sensor which ensures accurate detection of any shape and a measurement repeatability of 8  $\mu$ m.



## Light-Beam Unit

The light beam switch allows automatic "tooling" of the probe. During the process, the actual position of the probe tip with respect to the robot arm, as well as the probe length and the horizontal probe offset, are measured. The software then corrects all movements within the measurement jobs, such that the robot coordinates are valid for the probe tip.



The repeatability of this process is better than 0.1 mm. If a position has been taught with an aligned probe, the same position will be reached with another aligned probe within 0.1 mm, even if the other probe has different dimensions. During probe rotations, the probe tip will keep its actual position.



## Phantoms

### SAM-Twin Phantom

The shell corresponds to the specifications of the Specific Anthropomorphic Mannequin (SAM) phantom defined in IEEE 1528 and IEC 62209-1. It enables the dosimetric evaluation of left and right hand phone usage as well as body-mounted usage at the flat phantom region. A cover prevents evaporation of the liquid. Reference markings on the phantom allow the complete setup of all predefined phantom positions and measurement grids by teaching three points with the robot.

SAM-Twin V5.0 and higher has the same shell geometry and is manufactured from the same material as SAM-Twin V4.0, but with the top structure reinforced.

**Material** Vinyl ester, fiberglass reinforced (VE-GF)  
The phantom shell is compatible with SPEAG tissue simulating liquids (sugar and oil based).

**Liquid Compatibility** Use of other liquids may render the phantom warranty void (see note or consult SPEAG support).

**Shell Thickness**  $2 \pm 0.2$  mm ( $6 \pm 0.2$  mm at ear point)

**Dimensions** Length: 1000 mm

(incl. Wooden Width: 500 mm

Support) Height: adjustable feet

**Filling Volume** approx. 25 liters

**Support** DASY6: standard-size platform slot

DASY52 stand-alone: SPEAG standard phantom table

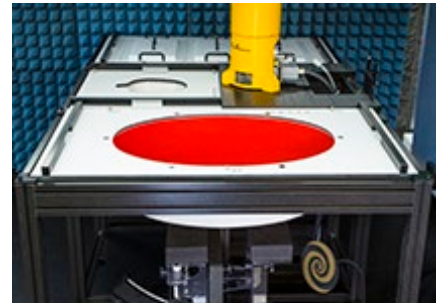


## ELI phantom

The ELI phantom is used for compliance testing of handheld and body-mounted wireless devices in the frequency range of 30 MHz to 6 GHz. ELI is fully compatible with the IEC 62209-2 standard and all known tissue simulating liquids. ELI has been optimized regarding its performance and can be integrated into our standard phantom tables. A cover prevents evaporation of the liquid. Reference markings on the phantom allow installation of the complete setup, including all predefined phantom positions and measurement grids, by teaching three points. The phantom is compatible with all SPEAG dosimetric probes and dipoles.

ELI V5.0 and higher has the same shell geometry and is manufactured from the same material as ELI V4.0, but has reinforced top structure. ELI V6.0, released in August 2014, has the same shell geometry as ELI V4.0 but offers increased longterm stability.

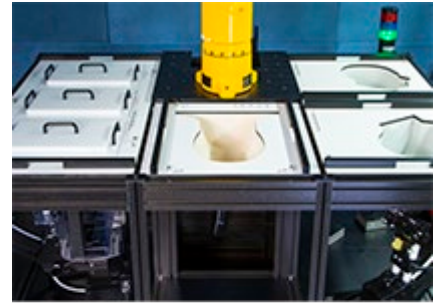
Material	Vinyl ester, fiberglass reinforced (VE-GF)
Liquid Compatibility	The phantom shell is compatible with SPEAG tissue simulating liquids (sugar and oil based). Use of other liquids may render the phantom warranty void (see note or consult SPEAG support).
Shell Thickness	2.0 ± 0.2 mm (bottom plate)
Dimensions	Major axis: 600 mm Minor axis: 400 mm
Filling Volume	approx. 30 liters
Support	DASY6: standard-size platform slot DASY52 stand-alone: SPEAG standard phantom table



### SAM Face Down Phantom

The SAM Face Down Phantom V10 allows assessment of the exposure of the face and in particular the eyes for handheld devices operated in front of the face. e.g., video phones, cameras, organizers, etc. It is manufactured from high precision injection molded polypropylene. The Mounting Device for Transmitters including extensions kit can be used to position the device.

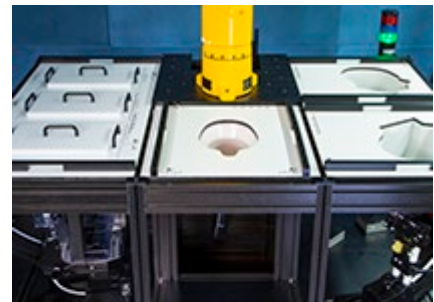
Material	Epoxy based
Liquid Compatibility	The phantom shell is compatible with SPEAG tissue simulating liquids (sugar and oil based). Use of other liquids may render the phantom warranty void (see note or consult SPEAG support).
Shell Thickness	$2 \pm 0.2$ mm (6 mm at ear point)
Head Shape	Standard compatible SAM head.



### SAM Head Stand Phantom

The SAM Head Stand Phantom V10 allows assessment of the exposure of the top-head or around-the-head wireless accessories, e.g., head-belts, etc. It is manufactured from high precision injection molded polypropylene. The Mounting Device for Transmitters including extensions kit can be used to position the device.

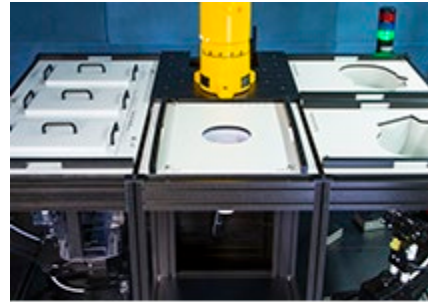
Material	Epoxy based
Liquid Compatibility	The phantom shell is compatible with SPEAG tissue simulating liquids (sugar and oil based). Use of other liquids may render the phantom warranty void (see note or consult SPEAG support).
Shell Thickness	$2 \pm 0.2$ mm (6 mm at ear point)
Head Shape	Standard compatible SAM head.



## Wrist Phantom

The Wrist Phantom V10 is shape-compatible with the CTIA approved OTA GFPC-V1 and optimized for SAR evaluation of watches and other wireless hand accessories.

Material	Epoxy based
Liquid Compatibility	The phantom shell is compatible with SPEAG tissue simulating liquids (sugar and oil based). Use of other liquids may render the phantom warranty void (see note or consult SPEAG support).
Shell Thickness	Shell Thickness
Wrist Shape	Design compatible with CTIA forearm.



### Device Holder for SAM-Twin Phantom

The SAR in the phantom is approximately inversely proportional to the square of the distance between the source and the liquid surface. For a source at 5mm distance, a positioning uncertainty of  $\pm 0.5\text{mm}$  would produce uncertainty in the SAR of  $\pm 20\%$ . Accurate device positioning is therefore crucial for accurate and repeatable measurements. The positions at which the devices must be measured are defined by the standards.

#### MD4HHTV5 - Mounting Device for Hand-Held Transmitters

In combination with the Twin SAM V5.0/V5.0c or ELI phantoms, the Mounting Device for Hand-Held Transmitters enables rotation of the mounted transmitter device to specified spherical coordinates. At the heads, the rotation axis is at the ear opening. Transmitter devices can be easily and accurately positioned according to IEC 62209-1, IEEE 1528, FCC, or other specifications. The device holder can be locked for positioning at different phantom sections (left head, right head, flat).

**Material:** Polyoxymethylene (POM)



#### MDA4WTV5 - Mounting Device Adaptor for Ultra Wide Transmitters

An upgrade kit to Mounting Device to enable easy mounting of wider devices like big smart-phones, e-books, small tablets, etc. It holds devices with width up to 140 mm.

**Material:** Polyoxymethylene (POM)



#### MDA4SPV6 - Mounting Device Adaptor for Smart Phones

The solid low-density MDA4SPV6 adaptor assuring no impact on the DUT radiation performance and is conform with any DUT design and shape.

**Material:** ROHACELL



### MD4LAPV5 - Mounting Device for Laptops and other Body-Worn Transmitters

In combination with the Twin SAM V5.0/V5.0c or ELI phantoms, the Mounting Device (Body-Worn) enables testing of transmitter devices according to IEC 62209-2 specifications. The device holder can be locked for positioning at a flat phantom section.

**Material:** Polyoxymethylene (POM), PET-G, Foam



### MDA4LAP - Mounting Device Adaptor for Laptops

A simple but effective and easy-to-use extension for the Mounting Device; facilitates testing of larger devices (e.g., laptops, cameras, etc.) according to IEC 62209-2; lightweight and fits easily on the upper part of the Mounting Device in place of the phone positioner. The extension is fully compatible with the Twin SAM as well as ELI and other Flat Phantoms.

**Material:** Polyoxymethylene (POM), PET-G, Foam



## Modulation and Interference Analyzer(MAIA)

MAIA is a hardware interface used to evaluate the modulation and audio interference characteristics of RF signals in the frequency range 698 - 6000 MHz. DASY6 evaluates the time-domain and frequency domain properties of the uplink signal transmitted by the DUT during SAR measurement with MAIA. MAIA uses USB powered active electronics to identify the modulation of the DUT. It can be operated over the air interface using the built-in ultra-broadband planar log spiral antenna (698 - 6000 MHz) or in conducted mode using the coaxial SMA 50 Ohm connector (300 - 6000 MHz).



To prevent damage in conducted mode due to high peak power, an external RF attenuator may be mounted. The LED on the MAIA hardware also indicates whether it is connected.



### DAK-3.5 (200MHz – 20GHz)

This precision dielectric measurement system is designed to cover the 200MHz – 20GHz frequency range with a single open-ended coaxial dielectric probe. The system uses advanced algorithms and novel hardware to measure the dielectric properties of liquids, solids, and semi-solids over a broad range of parameters. The measurement method is fast and non-destructive to the material under test.



Evaluation of reference liquids over a broad frequency range for specific absorption rate (SAR) measurements, in accordance with IEC 62209, IEEE 1528, and several federal regulations.

Evaluating Software: DAK software version 2.0

### MRT simulating liquid

Product	Test Frequency (MHz)	Main Ingredients
HSL450	400 – 500	Water, Sucrose, NaCl
MSL450	400 – 500	Water, Sucrose, NaCl

### Speag Broad-Band simulating liquid

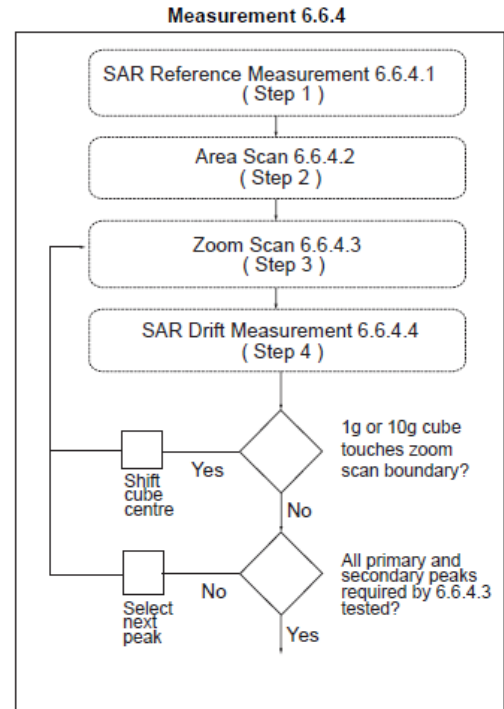
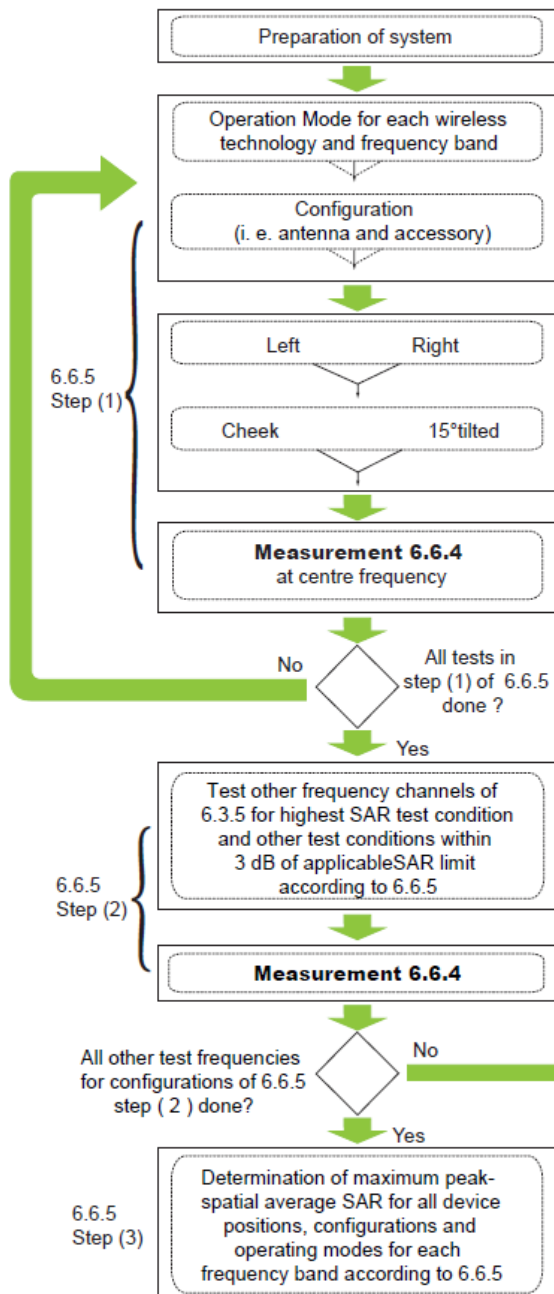
Product	Test Frequency (MHz)	Main Ingredients
HBBL600-10000V6	600 – 10000	Water, Oil
MBBL600-6000V6	600 – 6000	Water, Oil

## 5. The SAR Measurement Procedure

### 5.1. Measurement Process Diagram

#### General Procedure

For IEEE1528-2013 Head SAR



For Body SAR

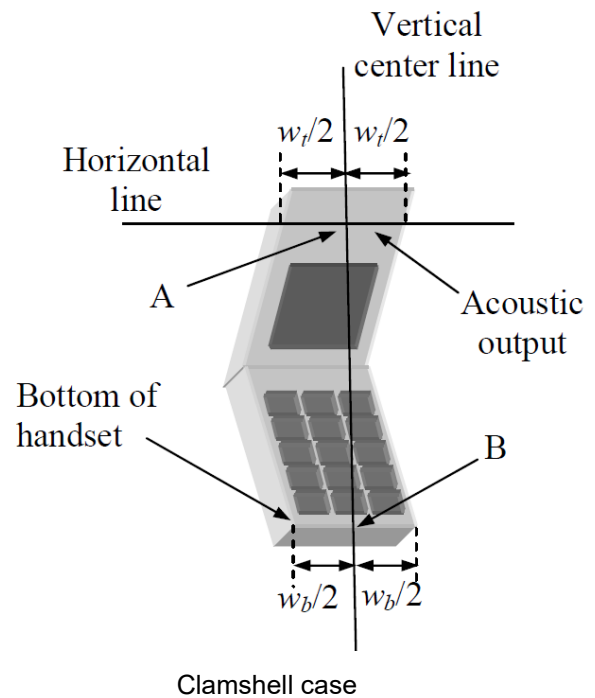
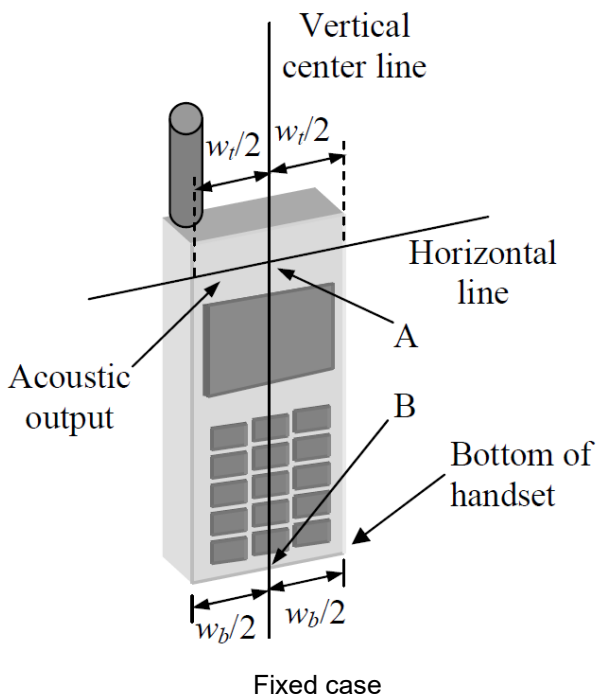
SAR scan procedures described in section 2.7 of KDB 865664 D01 v01r04 should be applied to body SAR test.

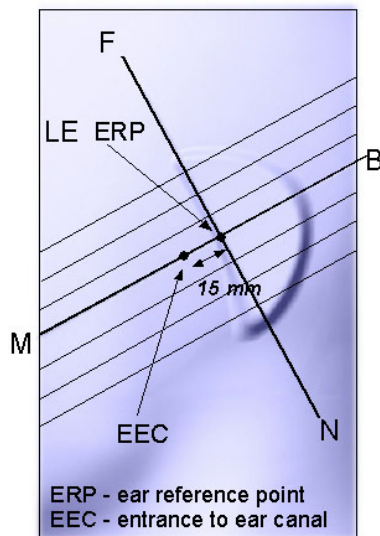


## 5.2. Test Position Definition

### ■ Head SAR Test Position

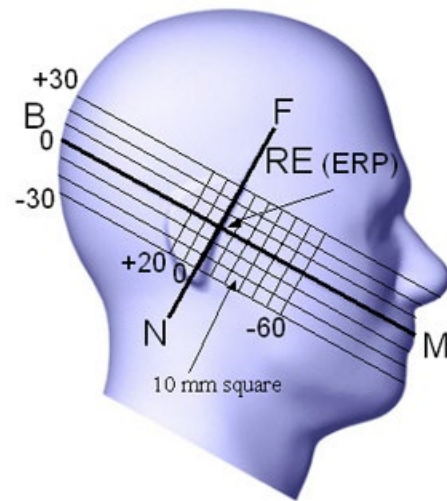
Define two imaginary lines on the handset—the vertical centerline and the horizontal line. The vertical centerline passes through two points on the front side of the handset—the midpoint of the width  $w_t$  of the handset at the level of the acoustic output [point A in Fixed case and Clamshell case], and the midpoint of the width  $w_b$  at the bottom of the handset (point B). The horizontal line is perpendicular to the vertical centerline and passes through the center of the acoustic output [see Fixed case]. The horizontal line is also tangential to the face of the handset at point A. The two lines intersect at point A. Note that for many handsets, point A coincides with the center of the acoustic output; however, the acoustic output may be located elsewhere on the horizontal line. Also note that the vertical centerline is not necessarily parallel to the front face of the handset [see Clamshell case], especially for clamshell handsets, handsets with flip covers, and other irregularly-shaped handsets, the vertical centerline passes through point A but not the tip edge of the phone.





### Key

- B Direction of B-M line back endpoint
- F Direction of N-F line front endpoint
- N Direction of N-F line neck endpoint
- M Mouth reference point
- LE Left ear reference point (ERP)



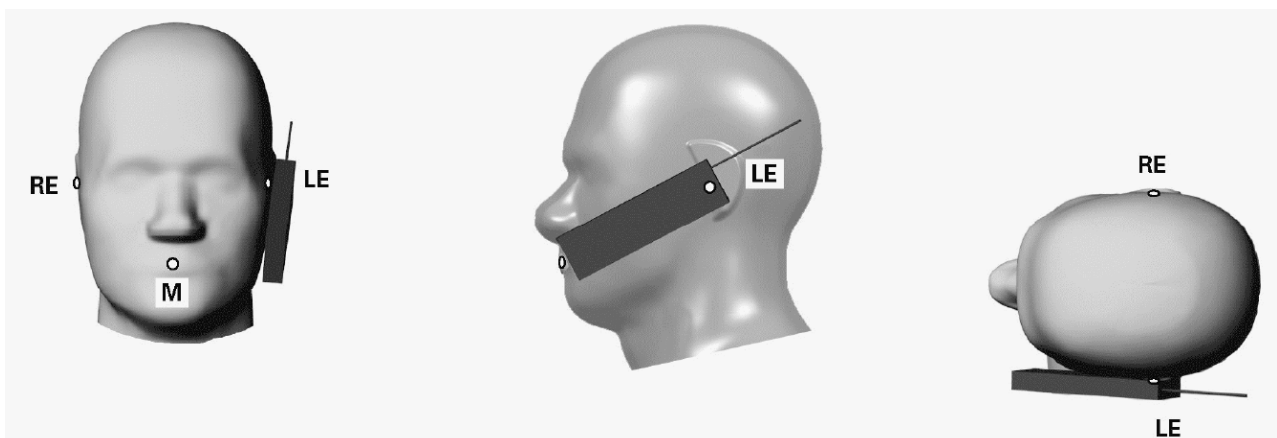
### Key

- B Line B-M back endpoint
- M Line B-M front endpoint
- N Line N-F neck endpoint
- F Line N-F front endpoint
- RE Right ear reference point (ERP)

### Cheek Position

The cheek position has the following characteristics, based on the geometrical lines described above:

- The N-F line (see above) is in the plane defined by the handset vertical centerline and horizontal line
- Handset touches the pinna
- The handset vertical centerline is aligned with the Reference Plane.



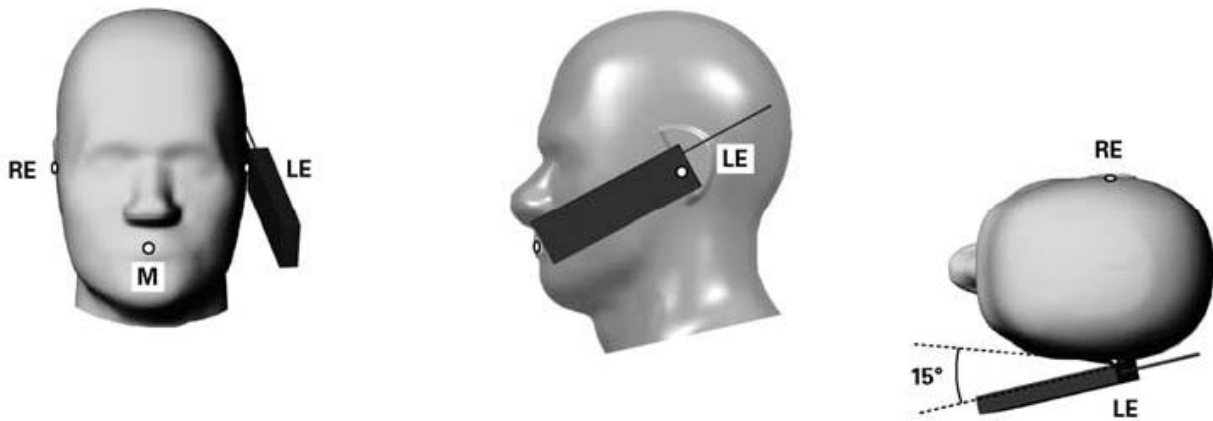
### Key

- M Mouth reference point
- LE Left ear reference point
- RE Right ear reference point

### Tilt Position

The tilt position is established as follows:

- Repeat the steps to place the device in the cheek position.
- While maintaining the orientation of the handset, move the handset away from the pinna along the line passing through RE and LE far enough to allow a rotation of the handset away from the cheek by  $15^\circ$ .
- Rotate the handset around the horizontal line by  $15^\circ$ .
- While maintaining the orientation of the handset, move the handset towards the phantom on the line passing through RE and LE until any part of the handset touches the ear. The tilt position is obtained when the contact point is on the pinna. If contact occurs at any location other than the pinna, e.g., the antenna at the back of the phantom head, the angle of the handset shall be reduced. In this case, the tilt position is obtained if any point on the handset is in contact with the pinna and a second point on the handset is in contact with the phantom, e.g., the antenna with the back of the head.



### Key

M	Mouth reference point
LE	Left ear reference point
RE	Right ear reference point

### ■ Body SAR Test Position

For body-worn accessory, hotspot mode and other exposure conditions to human body should be conducted pursuant to the test position requirements of SAR KDBs for certain product.

### **5.3. Test Procedure**

#### **Step 1 Setup a Connection**

First, engineer should record the conducted power before the test. Then establish a call in handset at the maximum power level with a base station simulator via air interface, or make the EUT establish transmission by itself in testing band. Place the EUT to certain test position.

#### **Step 2 Power Reference Measurements**

To measure the local E-field value at a fixed location which value will be taken as a reference value for calculating a possible power drift.

#### **Step 3 Area Scan**

The Area Scan is used as a fast scan in two dimensions to find the area of high field values, before doing a fine measurement around the hot spot. The sophisticated interpolation routines implemented in DASY software can find the maximum locations even in relatively coarse grids. When an Area Scan has measured all reachable points, it computes the field maximal found in the scanned area, within a range of the global maximum. The range (in dB) is specified in the standards for compliance testing. For example, a 2 dB range is required in IEEE Standard 1528 and IEC 62209 standards, whereby 3 dB is a requirement when compliance is assessed in accordance with the ARIB standard (Japan). If only one Zoom Scan follows the Area Scan, then only the absolute maximum will be taken as reference. For cases where multiple maximums are detected, the number of Zoom Scans has to be increased accordingly.

### Area Scan Parameters extracted from KDB 865664 D01v01r04

	≤ 3 GHz	> 3 GHz
Maximum distance from closest measurement point (geometric center of probe sensors) to phantom surface	5 mm ± 1 mm	$\frac{1}{2} \cdot \delta \cdot \ln(2)$ mm ± 0.5 mm
Maximum probe angle from probe axis to phantom surface normal at the measurement location	30° ± 1°	20° ± 1°
Maximum area scan spatial resolution: $\Delta X_{Area}$ , $\Delta Y_{Area}$	≤ 2 GHz: ≤ 15 mm 2 - 3 GHz: ≤ 12 mm	3 - 4 GHz: ≤ 12 mm 4 - 6 GHz: ≤ 10 mm
	When the x or y dimension of the test device, in the measurement plane orientation, is smaller than the above, the measurement resolution must be ≤ the corresponding x or y dimension of the test device with at least one measurement point on the test device.	
Note: $\delta$ is the penetration depth of a plane-wave at normal incidence to the tissue medium; see IEEE Std 1528-2013 for details.		

#### Step 4 Zoom Scan

Zoom Scans are used to assess the peak spatial SAR values within a cubic averaging volume containing 1 g and 10 g of simulated tissue. The Zoom Scan measures points (refer to table below) within a cube whose base faces are centered on the maxima found in a preceding area scan job within the same procedure. When the measurement is done, the Zoom Scan evaluates the averaged SAR for 1 g and 10 g and displays these values next to the job's label.

**Zoom Scan Parameters extracted from KDB 865664 D01 v01r04**

			≤ 3 GHz	> 3 GHz
Maximum zoom scan spatial resolution: Δx <sub>Zoom</sub> , Δy <sub>Zoom</sub>			≤ 2 GHz: ≤ 8 mm 2 - 3 GHz: ≤ 5 mm*	3 - 4 GHz: ≤ 5 mm* 4 - 6 GHz: ≤ 4 mm*
Maximum zoom scan spatial resolution, normal to phantom surface	uniform grid: Δz <sub>Zoom</sub> (n)		≤ 5 mm	3 - 4 GHz: ≤ 4 mm 4 - 5 GHz: ≤ 3 mm 5 - 6 GHz: ≤ 2 mm
	graded grid	Δz <sub>Zoom</sub> (1): between 1 <sup>st</sup> two points closest to phantom surface	≤ 4 mm	3 - 4 GHz: ≤ 3 mm 4 - 5 GHz: ≤ 2.5 mm 5 - 6 GHz: ≤ 2 mm
		Δz <sub>Zoom</sub> (n>1): between subsequent points	≤ 1.5·Δz <sub>Zoom</sub> (n-1) mm	
Minimum zoom scan volume	x, y, z		≥ 30 mm	3-4 GHz: ≥ 28 mm 4-5 GHz: ≥ 25 mm 5-6 GHz: ≥ 22 mm
Note: * When zoom scan is required and the reported SAR from the area scan based 1-g SAR estimation procedures of KDB Publication 447498 is ≤ 1.4 W/kg, ≤ 8 mm, ≤ 7 mm and ≤ 5 mm zoom scan resolution may be applied, respectively, for 2 GHz to 3 GHz, 3 GHz to 4 GHz and 4 GHz to 6 GHz.				

#### Step 5 Power Drift Measurements

Repetition of the E-field measurement at the fixed location mentioned in Step 1 to make sure the two results differ by less than  $\pm 0.2$  dB.

#### Step 6 Test Data

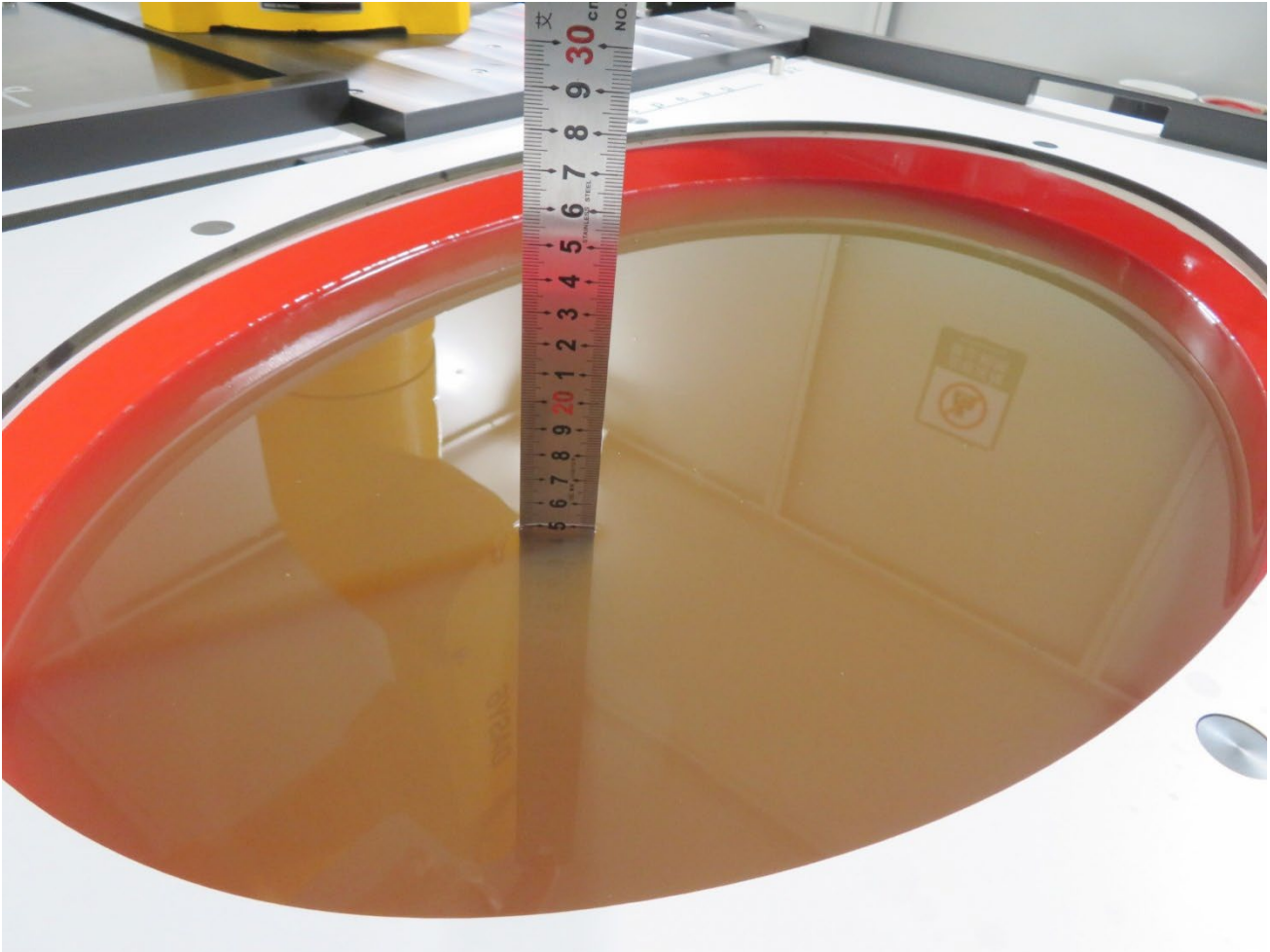
After the test, SAR test data should be exported by SEMCAD.

## 6. System Verificaiton

### 6.1. SAR Tissue Check

- Refer to KDB 865664 D01 v01r04, the depth of tissue-equivalent liquid in a phantom must be  $\geq 15.0$  cm with  $\leq \pm 0.5$  cm variation for SAR measurements  $\leq 3$  GHz and  $\geq 10.0$  cm with  $\leq \pm 0.5$  cm variation for measurements  $> 3$  GHz.

15cm Depth Head Tissue for ELI Phantom



■ Dielectric properties of the head tissue-equivalent liquid

Frequency MHz	Relative Permittivity $\epsilon_r$	Conductivity ( $\sigma$ ) S/m
300	45.3	0.87
450	43.5	0.87
750	41.9	0.89
835	41.5	0.90
900	41.5	0.97
1 450	40.5	1.20
<i>1 500</i>	<i>40.4</i>	<i>1.23</i>
<i>1 640</i>	<i>40.2</i>	<i>1.31</i>
<i>1 750</i>	<i>40.1</i>	<i>1.37</i>
1 800	40.0	1.40
1 900	40.0	1.40
2 000	40.0	1.40
<i>2 100</i>	<i>39.8</i>	<i>1.49</i>
<i>2 300</i>	<i>39.5</i>	<i>1.67</i>
2 450	39.2	1.80
<i>2 600</i>	<i>39.0</i>	<i>1.96</i>
3 000	38.5	2.40
<i>3 500</i>	<i>37.9</i>	<i>2.91</i>
<i>4 000</i>	<i>37.4</i>	<i>3.43</i>
<i>4 500</i>	<i>36.8</i>	<i>3.94</i>
<i>5 000</i>	<i>36.2</i>	<i>4.45</i>
<i>5 200</i>	<i>36.0</i>	<i>4.66</i>
<i>5 400</i>	<i>35.8</i>	<i>4.86</i>
<i>5 600</i>	<i>35.5</i>	<i>5.07</i>
<i>5 800</i>	<i>35.3</i>	<i>5.27</i>
<i>6 000</i>	<i>35.1</i>	<i>5.48</i>

Note: For convenience, permittivity and conductivity values are linearly interpolated for frequencies that are not a part of the original data from Drossos et al. [2]. They are shown in italics in Table 2. The italicized values are linearly interpolated (below 5 800 MHz) or extrapolated (above 5 800 MHz) from the non-italicized values that are immediately above and below these values.



## ■ Tissue Calibration Result

The dielectric parameters of the liquids were verified prior to the SAR evaluation using DASY6 Dielectric Assessment Kit and keysight PNA-L Network Analyzer N5234B.

Freq. (MHz)	Perm.	Cond.	Target Perm.	Target Cond.	Deviation Perm. %	Deviation Cond. %	Tissue Temperature	Test Date
2450	40.59	1.79	39.20	1.80	3.55	-0.56	22.5°C	2024.07.05
5250	35.90	4.48	35.93	4.71	-0.08	-4.88	22.5°C	2024.07.06
5750	35.05	5.03	35.36	5.22	-0.88	-3.64	22.5°C	2024.07.07

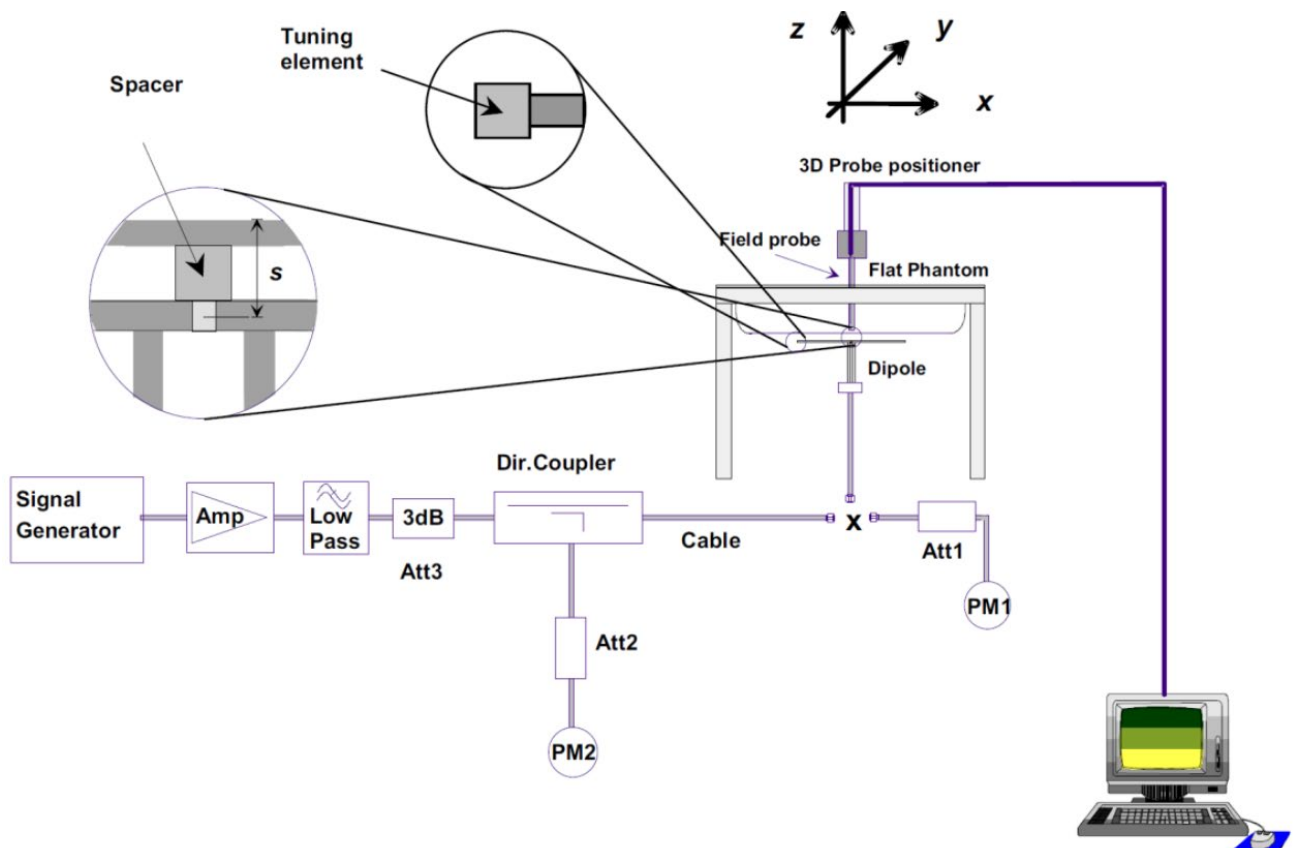
Note: The  $\pm 5\%$  deviation of tissue parameter is recommended.

## 6.2. SAR System Check

### ■ Purpose

The purpose of the system check is to verify that the system operates within its specifications at the device test frequencies. System check verifies the measurement repeatability of a SAR system before compliance testing and is not a validation of all system specifications. The latter is not required for testing a device but is mandatory before the system is deployed.

### ■ System Performance Check Setup Diagram



### ■ System Check Procedure

The system check procedure is a complete 1g and 10g peak spatial-average SAR measurement using a source having a previously determined system check target value. The measured 1g and 10g SAR are normalized to the target input power of the specific source and compared to their respective target values. A description of the different measurement tasks to be performed is given below, together with the information that can be deduced from their results:

- The Power Reference Measurement and Power Drift Measurement are located at the beginning and end of the batch process. They measure the field drift at one single point in the liquid over the complete procedure. The indicated drift is mainly the variation of the amplifier output power. If it is too high (above  $\pm 0.1$  dB), the

system check should be repeated; some amplifiers have very high drift during warm-up. A stable amplifier gives drift results in the DASY6 system below  $\pm 0.02$  dB.

b. The second step is optional. For probes with integrated optical surface detection sensor this step must be conducted, otherwise the step can be skipped. The Surface Check tests the optical surface detection system of the DASY6 system by repeatedly detecting the surface with the optical and mechanical surface detector and comparing the results. The output gives the detecting heights of both systems, the difference between the two systems and the standard deviation of the detection repeatability. Air bubbles or refraction in the liquid due to separation of the sugar-water mixture gives poor repeatability (above  $\pm 0.1$  mm). In that case it is better to abort the system check and stir the liquid.

c. The Area Scan measures the SAR above the dipole on a plane parallel to the surface. It is used to locate the approximate location of the peak SAR. The proposed scan uses large grid spacing for faster measurement; due to the symmetric field, the peak detection is reliable. If a finer graphic is desired, the grid spacing can be reduced. Grid spacing and orientation have no influence on the SAR result.

d. The Zoom Scan measures the field in a volume around the peak SAR value assessed in the previous Area Scan.

If the system check gives reasonable results, the SAR peak, 1 g and 10 g spatial average SAR values normalized to 1 W dipole input power give reference data for comparisons. The next sections analyze the expected uncertainties of these values, as well as additional checks for further information or troubleshooting.

#### ■ Result of System Performance Check

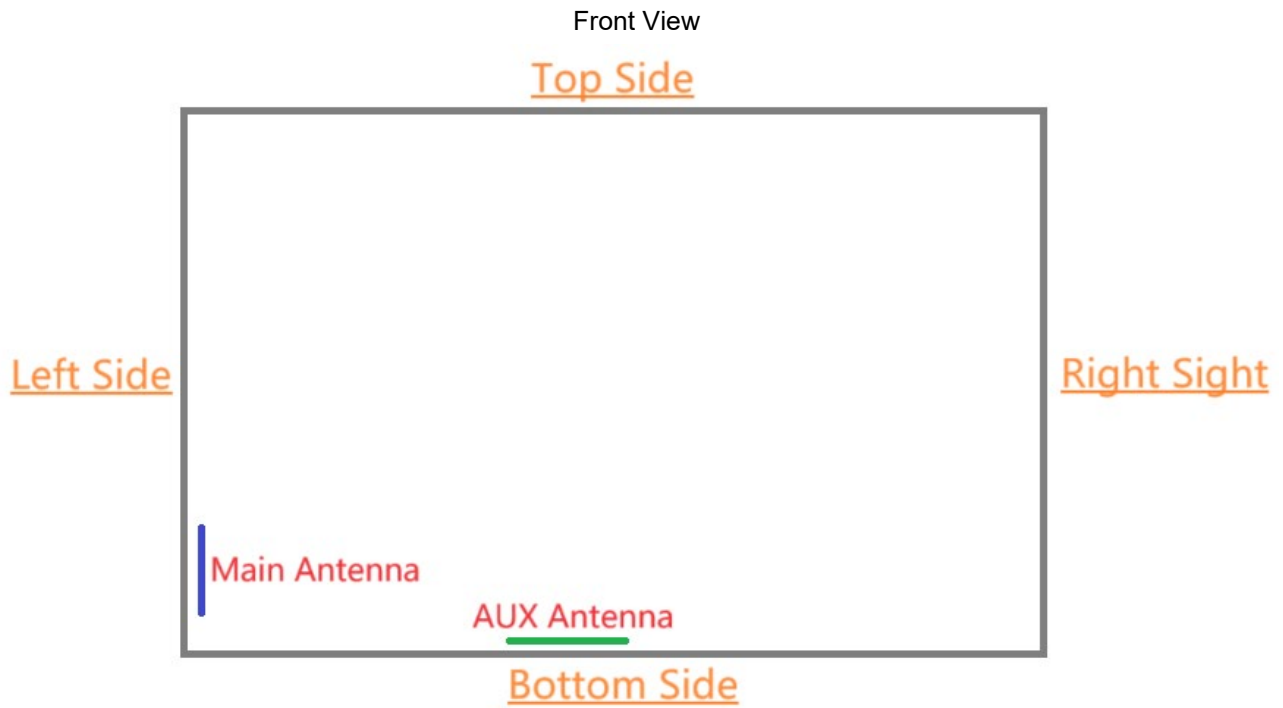
Freq. (MHz)	1g SAR (W/kg)	10g SAR (W/kg)	Target 1g SAR (W/kg)	Target 10g SAR (W/kg)	Deviation 1g SAR (%)	Deviation 10g SAR (%)	Tissue Temp.	Test Date
2450	53.20	25.40	53.00	24.70	0.38	2.83	22.5°C	2024.07.05
5250	80.60	23.50	76.90	21.80	4.81	7.80	22.5°C	2024.07.06
5750	78.60	22.70	76.90	21.50	2.21	5.58	22.5°C	2024.07.07

Notes:

1. The  $\pm 10\%$  deviation of system check result is required.
2. System check value listed above has been harmonized to 1W.

## 7. Analysis and Results

### 7.1. Antenna Location



Note: The overall diagonal dimension of EUT is 338mm.

## 7.2. Conducted Power

### ■ DTS Band Wi-Fi - SISO

Mode	CH.	Freq. (MHz)	AUX ANT Average Power (dBm)	AUX ANT Max. Tune-up Power (dBm)	Main ANT Average Power (dBm)	Main ANT Max. Tune-up Power (dBm)	Duty Cycle %
b	1	2412	18.94	19.5	18.93	19.5	97.80
	6	2437	20.12	20.5	19.99	20.5	
	11	2462	19.17	19.5	20.05	20.5	
g	1	2412	15.21	16.0	15.30	16.0	97.80
	6	2437	18.92	19.5	18.86	19.0	
	11	2462	15.60	16.0	15.90	16.0	
n-HT20	1	2412	15.01	16.0	15.06	16.0	98.93
	6	2437	19.03	19.5	18.59	19.0	
	11	2462	15.54	16.0	15.78	16.0	
n-HT40	3	2422	12.40	13.0	11.76	12.0	98.89
	6	2437	15.62	16.0	15.47	16.0	
	9	2452	13.69	14.0	13.16	14.0	

### ■ DTS Band Wi-Fi - MIMO

Mode	CH.	Freq. (MHz)	AUX ANT Average Power (dBm)	Main ANT Average Power (dBm)	Total Average Power (dBm)	Total Max. Tune-up Power (dBm)	Duty Cycle %
n-HT20	1	2412	13.54	13.40	16.48	17.0	98.93
	6	2437	16.93	16.83	19.89	20.5	
	11	2462	14.02	14.03	17.04	17.5	
n-HT40	3	2422	11.03	10.93	13.99	14.5	98.89
	6	2437	13.67	13.48	16.59	17.0	
	9	2452	12.21	12.12	15.18	16.0	

## ■ U-NII-1 Band Wi-Fi - SISO

Mode	CH.	Freq. (MHz)	AUX ANT Average Power (dBm)	AUX ANT Max. Tune-up Power (dBm)	Main ANT Average Power (dBm)	Main ANT Max. Tune-up Power (dBm)	Duty Cycle %
a	36	5180	16.75	17.0	16.92	17.5	99.01
	44	5220	17.61	18.0	19.36	19.5	
	48	5240	17.63	18.0	19.54	20.0	
n-HT20	36	5180	16.64	17.0	16.96	17.5	99.01
	44	5220	17.63	18.0	19.38	19.5	
	48	5240	17.62	18.0	19.47	20.0	
n-HT40	38	5190	16.25	17.0	15.60	16.0	98.89
	46	5230	17.65	18.0	18.00	18.5	
ac-VHT80	42	5210	16.43	17.0	15.61	16.0	98.74

## ■ U-NII-1 Band Wi-Fi - MIMO

Mode	CH.	Freq. (MHz)	AUX ANT Average Power (dBm)	Main ANT Average Power (dBm)	Total Average Power (dBm)	Total Max. Tune-up Power (dBm)	Duty Cycle %
n-HT20	36	5180	16.26	16.07	19.18	19.5	99.01
	44	5220	17.68	17.57	20.64	21.0	
	48	5240	17.58	17.52	20.56	21.0	
n-HT40	38	5190	14.27	14.13	17.21	17.5	98.89
	46	5230	17.72	17.68	20.71	21.0	
ac-VHT80	42	5210	13.83	14.11	16.98	17.5	98.74

## ■ U-NII-3 Band Wi-Fi - SISO

Mode	CH.	Freq. (MHz)	AUX ANT Average Power (dBm)	AUX ANT Max. Tune-up Power (dBm)	Main ANT Average Power (dBm)	Main ANT Max. Tune-up Power (dBm)	Duty Cycle %
a	149	5745	16.29	16.5	18.15	18.5	99.01
	157	5785	16.37	16.5	18.12	18.5	
	165	5825	16.35	16.5	18.24	18.5	
n-HT20	149	5745	16.32	16.5	18.14	18.5	99.01
	157	5785	16.37	16.5	18.11	18.5	
	165	5825	16.35	16.5	18.25	18.5	
n-HT40	151	5755	16.28	16.5	18.26	18.5	98.89
	159	5795	16.21	16.5	18.28	18.5	
ac-VHT80	155	5775	16.28	16.5	18.18	18.5	98.74

## ■ U-NII-3 Band Wi-Fi - MIMO

Mode	CH.	Freq. (MHz)	AUX ANT Average Power (dBm)	Main ANT Average Power (dBm)	Total Average Power (dBm)	Total Max. Tune-up Power (dBm)	Duty Cycle %
n-HT20	149	5745	16.17	15.94	19.07	19.5	99.01
	157	5785	16.16	16.02	19.10	19.5	
	165	5825	16.28	16.23	19.27	19.5	
n-HT40	151	5755	16.21	15.92	19.08	19.5	98.89
	159	5795	16.18	15.96	19.08	19.5	
ac-VHT80	155	5775	16.21	16.06	19.15	19.5	98.74

### ■ Bluetooth

Mode	CH.	Freq. (MHz)	Average Power (dBm)	Max. Tune-up Power (dBm)	Duty Cycle %
DH5	0	2402	9.60	10.0	76.80
	39	2441	10.02	10.5	
	78	2480	10.48	11.0	
2DH5	0	2402	6.53	7.0	76.93
	39	2441	6.69	7.0	
	78	2480	6.89	7.0	
3DH5	0	2402	6.50	7.0	77.01
	39	2441	6.69	7.0	
	78	2480	6.88	7.0	
BLE-1Mbps	0	2402	6.14	7.0	85.40
	19	2440	6.25	7.0	
	39	2480	6.43	7.0	

### ■ NFC

Freq. (MHz)	Maximum Level (dBμV/m)	Peak Power (dBm)	Max. Tune-up Power (dBm)	Duty Cycle %
13.56	58.04	-37.16	-37.0	100.00

Notes:

1. NFC field strength comes from RF report.
2. Peak Power (dBm) = Maximum Level (dBμV/m) - 95.2.



### 7.3. SAR Exclusion Analysis

Per FCC KDB 447498 D01v06, the SAR exclusion threshold for frequencies below 100 MHz, the following may be considered for SAR test exclusion:

- 1) For test separation distances  $> 50$  mm and  $< 200$  mm, the power threshold at the corresponding test separation distance at 100 MHz is multiplied by  $[1 + \log(100/f(\text{MHz}))]$
- 2) For test separation distances  $\leq 50$  mm, the power threshold determined by the equation in c) 1) for 50 mm and 100 MHz is multiplied by  $\frac{1}{2}$

Mode	Exposure Condition	Freq. (MHz)	Ant-to-user distance (mm)	Thresholds (mW)	Tune-up Power		SAR Test (Y/N)
					dBm	mW	
NFC	Body	13.56	0	442.97	-37.0	0.0002	N

#### 7.4. SAR Test Results

General notes:

1. When the highest reported SAR for DSSS is adjusted by the ratio of OFDM to DSSS specified maximum output power and the adjusted SAR is  $\leq 1.2$  W/kg, 802.11g/n OFDM SAR is not required, per KDB248227 D01 v02r02 section 5.2.2 b).
2. When multiple transmission modes (802.11a/g/n/ac) have the same specified maximum output power, largest channel bandwidth, lowest order modulation and lowest data rate, the lowest order 802.11 mode is selected; i.e., 802.11a is chosen over 802.11n then 802.11ac or 802.11g is chosen over 802.11n, per KDB248227 D01 v02r02 section 5.3.2.
3. When the highest reported SAR for the initial test configuration (when applicable, include subsequent highest output channels), according to the initial test position or fixed exposure position requirements, is adjusted by the ratio of the subsequent test configuration to initial test configuration specified maximum output power and the adjusted SAR is  $\leq 1.2$  W/kg, SAR is not required for that subsequent test configuration, per KDB248227 D01 v02r02 section 5.3.4 b).
4. When the original highest measured SAR is  $\geq 0.80$  W/kg, only one repeated measurement is required, if the measured SAR value of the initial repeated measurement is  $< 1.45$  W/kg with  $\leq 20\%$  variation, per KDB 865664 D01 v01r04 section 2.8.1.
5. Per KDB 447498 D01 v06 section 4.4.3 a), testing of other required channels within the operating mode of a frequency band is not required when the reported 1-g or 10-g SAR for the mid-band or highest output power channel is  $\leq 0.8$  W/kg or 2.0 W/kg, for 1-g or 10-g respectively, when the transmission band is  $\leq 100$  MHz.

Test Site	WZ-SR3
Test Engineer	Bella Chen

■ AUX

Test Band	Test Mode	CH.	Freq. (MHz)	Test Position	Dist. (mm)	Cond. Power (dBm)	Max. Tune-up Power (dBm)	Scaling Factor	Duty Cycle (%)	Duty Cycle Factor	Meas. SAR-1g (W/kg)	Reported SAR-1g (W/kg)	SAR Plot #
DTS	b	1	2412	Bottom	0	18.94	19.5	1.14	97.80	1.02	0.71	0.83	
		6	2437	Front	0	20.12	20.5	1.09	97.80	1.02	0.03	0.03	
				Back	0	20.12	20.5	1.09	97.80	1.02	0.19	0.21	
				Left	0	20.12	20.5	1.09	97.80	1.02	0.01	0.01	
				Right	0	20.12	20.5	1.09	97.80	1.02	0.01	0.01	
				Top	0	20.12	20.5	1.09	97.80	1.02	0.01	0.01	
				Bottom	0	20.12	20.5	1.09	97.80	1.02	0.98	<b>1.09</b>	1
				Bottom*	0	20.12	20.5	1.09	97.80	1.02	0.92	1.03	
		11	2462	Bottom	0	19.17	19.5	1.08	97.80	1.02	0.82	0.90	
UNII-1	n-HT40	38	5190	Bottom	0	16.25	17.0	1.19	99.01	1.01	0.61	0.73	
		46	5230	Front	0	17.65	18.0	1.08	98.89	1.01	0.13	0.14	
				Back	0	17.65	18.0	1.08	98.89	1.01	0.37	0.41	
				Left	0	17.65	18.0	1.08	98.89	1.01	0.10	0.11	
				Right	0	17.65	18.0	1.08	98.89	1.01	0.09	0.10	
				Top	0	17.65	18.0	1.08	98.89	1.01	0.02	0.02	
				Bottom	0	17.65	18.0	1.08	98.89	1.01	1.08	<b>1.18</b>	2
				Bottom*	0	17.65	18.0	1.08	98.89	1.01	1.01	1.11	
UNII-3	ac-VHT80	155	5775	Front	0	16.28	16.5	1.05	98.74	1.01	0.08	0.09	
				Back	0	16.28	16.5	1.05	98.74	1.01	0.30	0.32	
				Left	0	16.28	16.5	1.05	98.74	1.01	0.07	0.07	
				Right	0	16.28	16.5	1.05	98.74	1.01	0.24	0.26	
				Top	0	16.28	16.5	1.05	98.74	1.01	0.01	0.01	
				Bottom	0	16.28	16.5	1.05	98.74	1.01	1.05	<b>1.12</b>	3
				Bottom*	0	16.28	16.5	1.05	98.74	1.01	1.03	1.10	
DSS	DH5	78	2480	Front	0	10.48	11.0	1.13	76.80	1.30	0.01	0.01	
				Back	0	10.48	11.0	1.13	76.80	1.30	0.04	0.06	
				Left	0	10.48	11.0	1.13	76.80	1.30	0.01	0.01	
				Right	0	10.48	11.0	1.13	76.80	1.30	0.01	0.01	
				Top	0	10.48	11.0	1.13	76.80	1.30	0.01	0.01	

<Continue>

				Bottom	0	10.48	11.0	1.13	76.80	1.30	0.09	<b>0.13</b>	4
--	--	--	--	--------	---	-------	------	------	-------	------	------	-------------	---

Note: “ \* ”, repeat SAR measurement.

■ Main

Test Band	Test Mode	CH.	Freq. (MHz)	Test Position	Dist. (mm)	Cond. Power (dBm)	Max. Tune-up Power (dBm)	Scaling Factor	Duty Cycle (%)	Duty Cycle Factor	Meas. SAR-1g (W/kg)	Reported SAR-1g (W/kg)	SAR Plot #
DTS	b	11	2462	Front	0	20.05	20.5	1.11	97.80	1.02	0.22	0.25	
				Back	0	20.05	20.5	1.11	97.80	1.02	0.55	0.62	
				Left	0	20.05	20.5	1.11	97.80	1.02	0.69	<b>0.78</b>	5
				Right	0	20.05	20.5	1.11	97.80	1.02	0.02	0.02	
				Top	0	20.05	20.5	1.11	97.80	1.02	0.01	0.01	
				Bottom	0	20.05	20.5	1.11	97.80	1.02	0.04	0.05	
UNII-1	a	36	5180	Back	0	16.92	17.5	1.14	99.01	1.01	0.58	0.67	
		44	5220	Back	0	19.36	19.5	1.03	99.01	1.01	1.04	1.08	
		48	5240	Front	0	19.54	20.0	1.11	99.01	1.01	0.48	0.54	
				Back	0	19.54	20.0	1.11	99.01	1.01	1.05	<b>1.18</b>	6
				Back*	0	19.54	20.0	1.11	99.01	1.01	1.03	1.16	
				Left	0	19.54	20.0	1.11	99.01	1.01	0.85	0.95	
				Right	0	19.54	20.0	1.11	99.01	1.01	0.01	0.01	
				Top	0	19.54	20.0	1.11	99.01	1.01	0.13	0.15	
UNII-3	ac-VHT80	155	5775	Bottom	0	19.54	20.0	1.11	99.01	1.01	0.57	0.64	
				Front	0	18.18	18.5	1.08	98.74	1.01	0.36	0.39	
				Back	0	18.18	18.5	1.08	98.74	1.01	1.00	1.09	
				Left	0	18.18	18.5	1.08	98.74	1.01	1.02	<b>1.11</b>	7
				Left*	0	18.18	18.5	1.08	98.74	1.01	1.00	1.09	
				Right	0	18.18	18.5	1.08	98.74	1.01	0.01	0.01	
				Top	0	18.18	18.5	1.08	98.74	1.01	0.09	0.10	
				Bottom	0	18.18	18.5	1.08	98.74	1.01	0.38	0.41	

Note: “ \* ”, repeat SAR measurement.

### 7.5. Estimated SAR Calculation

Per FCC KDB 447498 D01v06 section 4.3.2 b) 1), when an antenna qualifies for the standalone SAR test exclusion of 4.3.1 and also transmits simultaneously with other antennas, the standalone SAR value was estimated according to the following formula to result in substantially conservative SAR values of  $\leq 0.4\text{W/kg}$  for test separation distance  $\leq 50\text{mm}$  to determine the simultaneous transmission SAR test exclusion criteria:

$$\text{Estimated SAR} = \frac{\sqrt{f(\text{GHz})}}{7.5} * \frac{(\text{Max Power of channel, mW})}{\text{Min. Separation, mm}}, \text{ for 1-g SAR}$$

$$\text{Estimated SAR} = \frac{\sqrt{f(\text{GHz})}}{18.75} * \frac{(\text{Max Power of channel, mW})}{\text{Min. Separation, mm}}, \text{ for 10-g SAR}$$

When the test separation distance is  $> 50\text{ mm}$ , estimated 1g-SAR  $0.4\text{W/kg}$ /10g-SAR  $1.0\text{W/kg}$  is used for simultaneous evaluation.

Exposure Condition	Test Mode	Freq. (MHz)	Test Position	Ant-to-user Distance (mm)	Tune-up Power (dBm)	Tune-up Power (mW)	Estimated SAR (W/kg)
Body	NFC	13.56	Front	0	-37.0	0.0002	$< 0.01$
			Back	0	-37.0	0.0002	$< 0.01$
			Left	0	-37.0	0.0002	$< 0.01$
			Right	0	-37.0	0.0002	$< 0.01$
			Top	0	-37.0	0.0002	$< 0.01$
			Bottom	0	-37.0	0.0002	$< 0.01$

## 8. Simultaneous Transmission Analysis

Test Position	Standalone SAR(W/kg)				Summed SAR(W/kg)			
	1	2	3	4	1+2+4	Dist. (mm)	SPLSR	2+3+4
	Wi-Fi (AUX ANT)	Wi-Fi (Main ANT)	BT	NFC				
Front	0.14	0.54	0.01	< 0.01	0.68	--	--	0.55
Back	0.41	1.18	0.06	< 0.01	1.59	--	--	1.24
Left	0.11	1.11	0.01	< 0.01	1.22	--	--	1.12
Right	0.26	0.02	0.01	< 0.01	0.28	--	--	0.03
Top	0.02	0.10	0.01	< 0.01	0.12	--	--	0.11
Bottom	1.18	0.64	0.13	< 0.01	1.82	107.63	0.02 <sup>Note 3</sup>	0.77

Notes:

1. SISO antenna SAR value is used to evaluate simultaneous transmission to get more conservative SAR values.
2. When the sum of SAR is larger than the limit, SAR test exclusion is determined by the SAR to peak location separation ratio. The ratio is determined by  $(SAR1 + SAR2)^{1.5}/R_i$ , rounded to two decimal digits, and must be  $\leq 0.04$  for all antenna pairs in the configuration to qualify for 1-g SAR test exclusion. When 10-g SAR applies, the ratio must be  $\leq 0.10$ .
3. The separation distance of SPLSR is shown in the plot below.

Find distance of maxima

☒ Maxima and position w.r.t. Grid Reference Point

☒ Zoom Scan (D:\MRT Reprot Data\2024\2407RSU005-S1168\FCC\AU X\802.11n-HT40 5230MHz AUX Body B...  
 Max. 1 at (17.20, 13.20, -0.98) mm

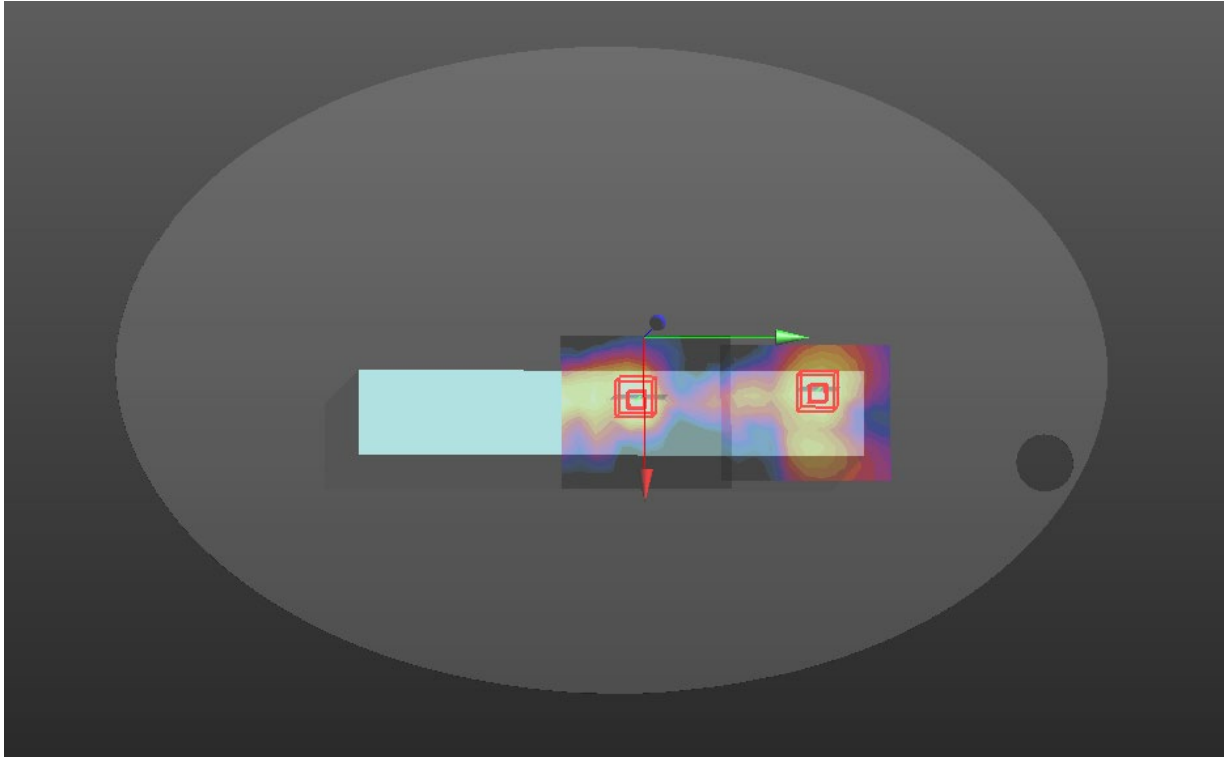
☒ Zoom Scan (D:\MRT Reprot Data\2024\2407RSU005-S1168\FCC\Main\802.11a 5240MHz Main Body Bottom...  
 Max. 2 at (14.60, 120.80, -0.91) mm

☒ Distances and Separation Ratios

Max. 1 - Max. 2

associated 1g averages  
 1.18 W/kg (Power Scale Factor: 1.09)  
 0.64 W/kg (Power Scale Factor: 1.12)  
 Distance [mm]: 107.63 / Separation ratio [W/kg/mm]: 0.02

Done



The above numerical summed SAR results for all the worst-case simultaneous transmission conditions were below the SAR limit. Therefore, the above analysis is sufficient to determine that simultaneous transmission cases will not exceed the SAR limit and therefore no measured volumetric simultaneous SAR summation is required per FCC KDB Publication 447498 D01v06.

## 9. Measuring Instrument

Instrument	Manufacturer	Type No.	Asset No.	Cali. Interval	Cali. Due Date
Stäubli Robot TX60L	Stäubli	TX60L	MRTSUE06412	N/A	N/A
Robot Controller	Stäubli	CS8C	MRTSUE06412	N/A	N/A
ELI Phantom Shell	Speag	V8	MRTSUE06420	N/A	N/A
DAK	Speag	DAK-3.5	MRTSUE06435	N/A	N/A
Dipole Validation Kits	Speag	D2450V2	MRTSUE06430	3 years	2027/05/06
Dipole Validation Kits	Speag	D5GHzV2	MRTSUE06434	3 years	2025/03/27
Data Acquisition Electronic	Speag	DAE4(SN 1552)	MRTSUE06414	1 year	2024/07/23
E-Field Probe	Speag	EX3DV4(SN 7856)	MRTSUE07088	1 year	2024/12/05
Network Analyzer	Keysight	N5234B	MRTSUE06454	1 year	2025/05/08
Directional Coupler	Agilent	778D	MRTSUE06083	1 year	2025/03/05
Directional Coupler	Agilent	87301DOPT 292	MRTSUE06082	1 year	2025/03/05
Signal Generator	Keysight	N5183B	MRTSUE06197	1 year	2025/06/03
Power Sensor	Keysight	U2021XA	MRTSUE06446	1 year	2025/05/08
Thermohygrometer	Testo	622	MRTSUE06361	1 year	2025/05/22

Software	Version	Function
DASY NEO	52.10.4.1535	SAR Test Software



## 10. Measurement Uncertainty

DASY6 Uncertainty Budget, according to IEEE 1528 (0.3 - 3 GHz range)								
Error Description	Uncert. value	Prob. Dist.	Div.	(ci) 1g	(ci) 10g	Std. Unc. (1g)	Std. Unc. (10g)	(vi) v <sub>eff</sub>
<b>Measurement System</b>								
Probe Calibration	±6.0 %	N	1	1	1	±6.0 %	±6.0 %	∞
Axial Isotropy	±4.7 %	R	$\sqrt{3}$	0.7	0.7	±1.9 %	±1.9 %	∞
Hemispherical Isotropy	±9.6 %	R	$\sqrt{3}$	0.7	0.7	±3.9 %	±3.9 %	∞
Boundary Effects	±1.0 %	R	$\sqrt{3}$	1	1	±0.6 %	±0.6 %	∞
Linearity	±4.7 %	R	$\sqrt{3}$	1	1	±2.7 %	±2.7 %	∞
System Detection Limits	±1.0 %	R	$\sqrt{3}$	1	1	±0.6 %	±0.6 %	∞
Modulation Response	±2.4 %	R	$\sqrt{3}$	1	1	±1.4 %	±1.4 %	∞
Readout Electronics	±0.3 %	N	1	1	1	±0.3 %	±0.3 %	∞
Response Time	±0.8 %	R	$\sqrt{3}$	1	1	±0.5 %	±0.5 %	∞
Integration Time	±2.6 %	R	$\sqrt{3}$	1	1	±1.5 %	±1.5 %	∞
RF Ambient Noise	±3.0 %	R	$\sqrt{3}$	1	1	±1.7 %	±1.7 %	∞
RF Ambient Reflections	±3.0 %	R	$\sqrt{3}$	1	1	±1.7 %	±1.7 %	∞
Probe Positioner	±0.02 %	R	$\sqrt{3}$	1	1	±0.0 %	±0.0 %	∞
Probe Positioning	±0.4 %	R	$\sqrt{3}$	1	1	±0.2 %	±0.2 %	∞
Max. SAR Eval.	±2.0 %	R	$\sqrt{3}$	1	1	±1.2 %	±1.2 %	∞
<b>Test Sample Related</b>								
Device Positioning	±2.9%	N	1	1	1	±2.9 %	±2.9 %	145
Device Holder	±3.6%	N	1	1	1	±3.6 %	±3.6 %	5
Power Drift	±5.0%	R	$\sqrt{3}$	1	1	±2.9 %	±2.9 %	∞
Power Scaling	±0%	R	$\sqrt{3}$	1	1	±0.0 %	±0.0 %	∞
<b>Phantom and Setup</b>								
Phantom Uncertainty	±6.1%	R	$\sqrt{3}$	1	1	±3.5 %	±3.5 %	∞
SAR correction	±1.9%	N	1	1	0.84	±1.9 %	±1.6 %	∞
Liquid Cond. (mea.) <sup>DAK</sup>	±2.5%	N	1	0.78	0.71	±2.0 %	±1.8 %	∞
Liquid Perm. (mea.) <sup>DAK</sup>	±2.5%	N	1	0.23	0.26	±0.6 %	±0.7 %	∞
Temp. unc. – Conductivity	±3.4%	R	$\sqrt{3}$	0.78	0.71	±1.5 %	±1.4 %	∞
Temp. unc. – Permittivity	±0.4%	R	$\sqrt{3}$	0.23	0.26	±0.1 %	±0.1 %	∞
<b>Combined Std. Uncertainty</b>						±11.3%	±11.2%	459
<b>Expanded STD Uncertainty</b>						<b>±22.6%</b>	<b>±22.4%</b>	

DASY6 Uncertainty Budget, according to IEEE 1528 (3 - 6 GHz range)								
Error Description	Uncert. value	Prob. Dist.	Div.	(ci) 1g	(ci) 10g	Std. Unc. (10g)	Std. Unc. (10g)	(vi) v <sub>eff</sub>
<b>Measurement System</b>								
Probe Calibration	±6.55 %	N	1	1	1	±6.55 %	±6.55 %	∞
Axial Isotropy	±4.7 %	R	$\sqrt{3}$	0.7	0.7	±1.9 %	±1.9 %	∞
Hemispherical Isotropy	±9.6 %	R	$\sqrt{3}$	0.7	0.7	±3.9 %	±3.9 %	∞
Boundary Effects	±2.0 %	R	$\sqrt{3}$	1	1	±1.2 %	±1.2 %	∞
Linearity	±4.7 %	R	$\sqrt{3}$	1	1	±2.7 %	±2.7 %	∞
System Detection Limits	±1.0 %	R	$\sqrt{3}$	1	1	±0.6 %	±0.6 %	∞
Modulation Response	±2.4 %	R	$\sqrt{3}$	1	1	±1.4 %	±1.4 %	∞
Readout Electronics	±0.3 %	N	1	1	1	±0.3 %	±0.3 %	∞
Response Time	±0.8 %	R	$\sqrt{3}$	1	1	±0.5 %	±0.5 %	∞
Integration Time	±2.6 %	R	$\sqrt{3}$	1	1	±1.5 %	±1.5 %	∞
RF Ambient Noise	±3.0 %	R	$\sqrt{3}$	1	1	±1.7 %	±1.7 %	∞
RF Ambient Reflections	±3.0 %	R	$\sqrt{3}$	1	1	±1.7 %	±1.7 %	∞
Probe Positioner	±0.04 %	R	$\sqrt{3}$	1	1	±0.0 %	±0.0 %	∞
Probe Positioning	±0.8 %	R	$\sqrt{3}$	1	1	±0.5 %	±0.5 %	∞
Max. SAR Eval.	±4.0 %	R	$\sqrt{3}$	1	1	±2.3 %	±2.3 %	∞
<b>Test Sample Related</b>								
Device Positioning	±2.9%	N	1	1	1	±2.9 %	±2.9 %	145
Device Holder	±3.6%	N	1	1	1	±3.6 %	±3.6 %	5
Power Drift	±5.0%	R	$\sqrt{3}$	1	1	±2.9 %	±2.9 %	∞
Power Scaling	±0%	R	$\sqrt{3}$	1	1	±0.0 %	±0.0 %	∞
<b>Phantom and Setup</b>								
Phantom Uncertainty	±6.6%	R	$\sqrt{3}$	1	1	±3.8 %	±3.8 %	∞
SAR correction	±1.9%	N	1	1	0.84	±1.9 %	±1.6 %	∞
Liquid Cond. (mea.) <sup>DAK</sup>	±2.5%	N	1	0.78	0.71	±2.0 %	±1.8 %	∞
Liquid Perm. (mea.) <sup>DAK</sup>	±2.5%	N	1	0.23	0.26	±0.6 %	±0.7 %	∞
Temp. unc. – Conductivity	±3.4%	R	$\sqrt{3}$	0.78	0.71	±1.5 %	±1.4 %	∞
Temp. unc. – Permittivity	±0.4%	R	$\sqrt{3}$	0.23	0.26	±0.1 %	±0.1 %	∞
<b>Combined Std. Uncertainty</b>						±11.9%	±11.8%	569
<b>Expanded STD Uncertainty</b>						<b>±23.8%</b>	<b>±23.6%</b>	

## Annex A - System Check Result

Test Date: 2024/07/05

### SystemPerformanceCheck-SAM2-D2450HSL

**Procedure Name: d=10mm, Pin=250mW, dist=1.4mm (EX-Probe)**

Communication System: CW; Frequency: 2450 MHz; Duty Cycle: 1:1

Medium parameters used:  $f = 2450$  MHz;  $\sigma = 1.79$  S/m;  $\epsilon_r = 40.59$ ;  $\rho = 1000$  kg/m<sup>3</sup>

Phantom section: Flat Section

DASY5 Configuration:

- Probe: EX3DV4 - SN7856; ConvF(7.08, 7.12, 7.02) @ 2450 MHz; Calibrated: 2023/12/6
- Sensor-Surface: 1.4mm (Mechanical Surface Detection)
- Electronics: DAE4 Sn1552; Calibrated: 2024/5/14
- Phantom: SAM2; Type: QD OVA 004 AA; Serial: 2089
- Measurement SW: DASY52, Version 52.10 (4); SEMCAD X Version 14.6.14 (7501)

**configuration/d=10mm, Pin=250mW, dist=1.4mm (EX-Probe)/Area Scan (7x9x1):** Measurement grid:

dx=12mm, dy=12mm; Maximum value of SAR (measured) = 20.4 W/kg

**configuration/d=10mm, Pin=250mW, dist=1.4mm (EX-Probe)/Zoom Scan (7x7x7)/Cube 0:** Measurement

grid: dx=5mm, dy=5mm, dz=5mm; Reference Value = 105.8 V/m; Power Drift = -0.01 dB

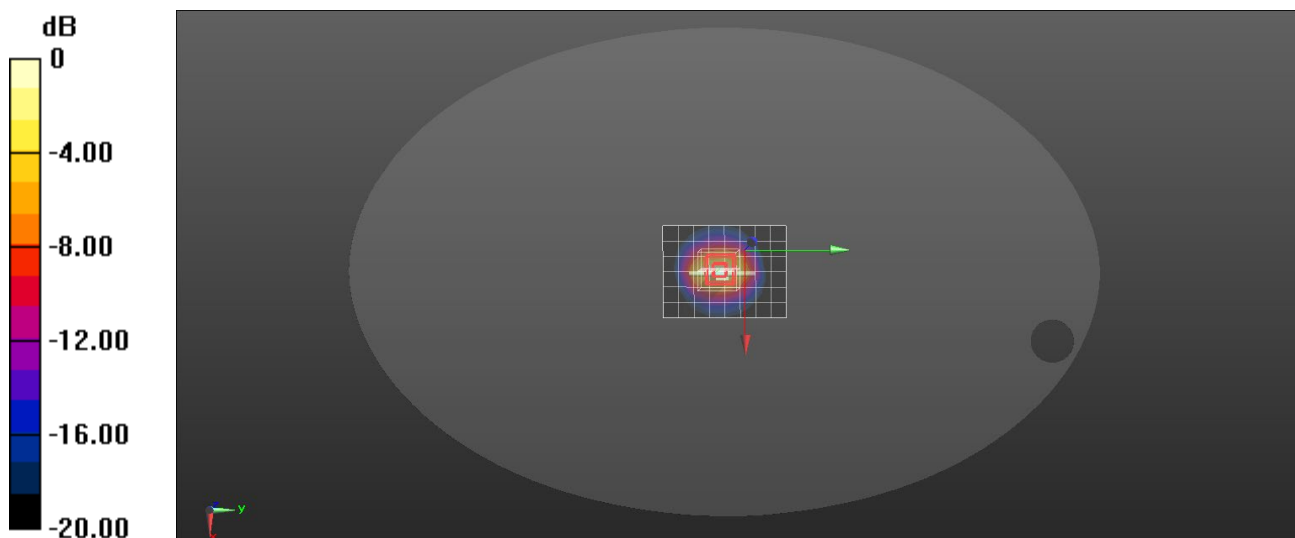
Peak SAR (extrapolated) = 26.0 W/kg

**SAR(1 g) = 13.3 W/kg; SAR(10 g) = 6.35 W/kg**

Smallest distance from peaks to all points 3 dB below = 9 mm

Ratio of SAR at M2 to SAR at M1 = 51.6%

Maximum value of SAR (measured) = 21.2 W/kg



0 dB = 21.2 W/kg = 13.26 dBW/kg

Test Date: 2024/07/06

## SystemPerformanceCheck-SAM2-D5250HSL

### DUT: Dipole D5GHzV2; Type: D5GHzV2

Communication System: CW; Frequency: 5250 MHz; Duty Cycle: 1:1

Medium parameters used:  $f = 5250$  MHz;  $\sigma = 4.48$  S/m;  $\epsilon_r = 35.9$ ;  $\rho = 1000$  kg/m<sup>3</sup>

Phantom section: Flat Section

DASY5 Configuration:

- Probe: EX3DV4 - SN7856; ConvF(5, 5.07, 4.96) @ 5250 MHz; Calibrated: 2023/12/6
- Sensor-Surface: 1.4mm (Mechanical Surface Detection)
- Electronics: DAE4 Sn1552; Calibrated: 2024/5/14
- Phantom: SAM2; Type: QD OVA 004 AA; Serial: 2089
- Measurement SW: DASY52, Version 52.10 (4); SEMCAD X Version 14.6.14 (7501)

**Configuration/d=10mm, Pin=100mW, dist=1.4mm (EX-Probe)/Area Scan (7x7x1):** Measurement grid:

dx=10mm, dy=10mm; Maximum value of SAR (measured) = 15.8 W/kg

**Configuration/d=10mm, Pin=100mW, dist=1.4mm (EX-Probe)/Zoom Scan (8x8x8) (7x7x7)/Cube 0:**

Measurement grid: dx=4mm, dy=4mm, dz=1.4mm; Reference Value = 57.62 V/m; Power Drift = -0.07 dB

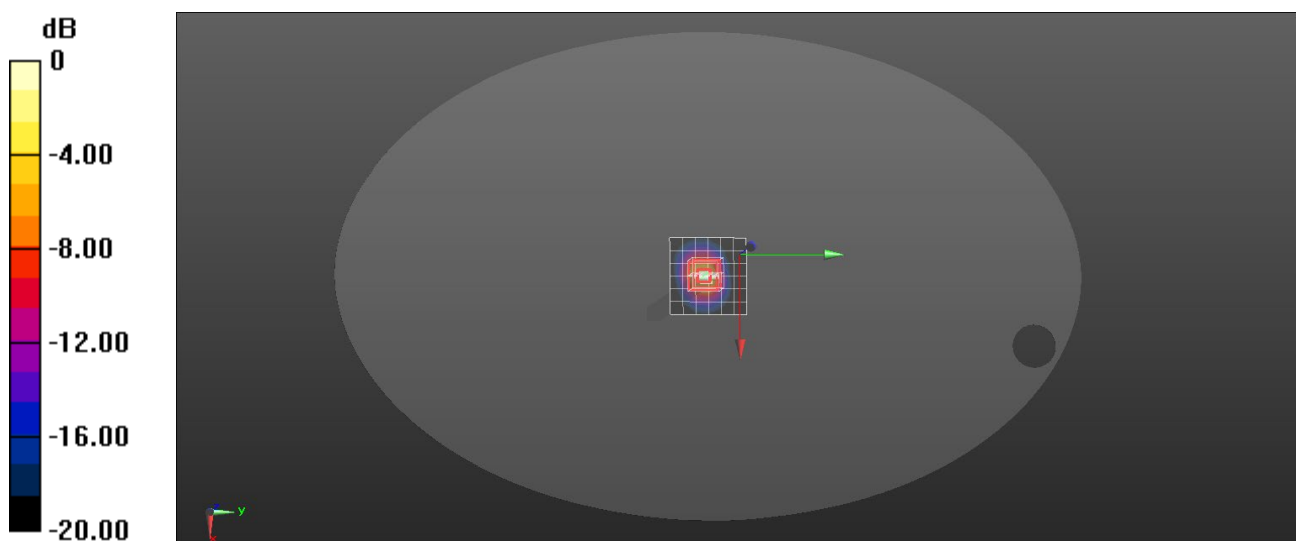
Peak SAR (extrapolated) = 30.5 W/kg

**SAR(1 g) = 8.06 W/kg; SAR(10 g) = 2.35 W/kg**

Smallest distance from peaks to all points 3 dB below = 7.4 mm

Ratio of SAR at M2 to SAR at M1 = 66.4%

Maximum value of SAR (measured) = 19.8 W/kg



0 dB = 19.8 W/kg = 12.97 dBW/kg

Test Date: 2024/07/07

## SystemPerformanceCheck-SAM2-D5750HSL

### DUT: Dipole D5GHzV2; Type: D5GHzV2

Communication System: CW; Frequency: 5750 MHz; Duty Cycle: 1:1

Medium parameters used:  $f = 5750$  MHz;  $\sigma = 5.03$  S/m;  $\epsilon_r = 35.05$ ;  $\rho = 1000$  kg/m<sup>3</sup>

Phantom section: Flat Section

DASY5 Configuration:

- Probe: EX3DV4 - SN7856; ConvF(4.26, 4.29, 4.21) @ 5750 MHz; Calibrated: 2023/12/6
- Sensor-Surface: 1.4mm (Mechanical Surface Detection)
- Electronics: DAE4 Sn1552; Calibrated: 2024/5/14
- Phantom: SAM2; Type: QD OVA 004 AA; Serial: 2089
- Measurement SW: DASY52, Version 52.10 (4); SEMCAD X Version 14.6.14 (7501)

**Configuration/d=10mm, Pin=100 mW, dist=1.4mm (EX-Probe)/Area Scan (7x9x1):** Measurement grid:

$dx=10$ mm,  $dy=10$ mm; Maximum value of SAR (measured) = 15.6 W/kg

**Configuration/d=10mm, Pin=100 mW, dist=1.4mm (EX-Probe)/Zoom Scan (8x8x8) (7x7x7)/Cube 0:**

Measurement grid:  $dx=4$ mm,  $dy=4$ mm,  $dz=1.4$ mm; Reference Value = 54.39 V/m; Power Drift = -0.02 dB

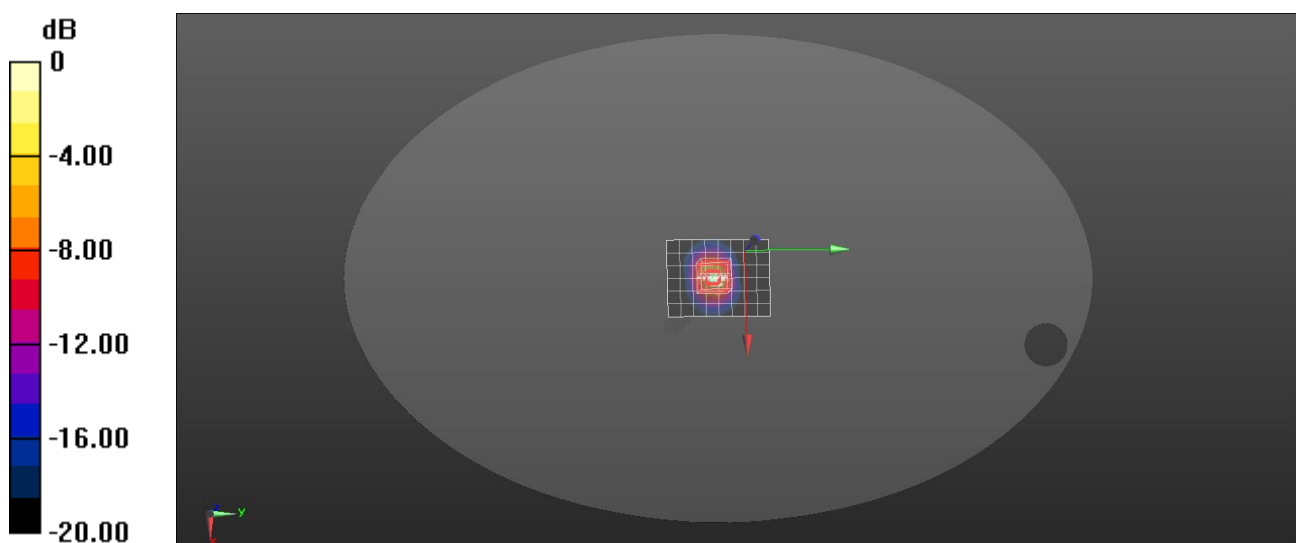
Peak SAR (extrapolated) = 33.2 W/kg

**SAR(1 g) = 7.86 W/kg; SAR(10 g) = 2.27 W/kg**

Smallest distance from peaks to all points 3 dB below = 7.4 mm

Ratio of SAR at M2 to SAR at M1 = 63%

Maximum value of SAR (measured) = 20.3 W/kg



0 dB = 20.3 W/kg = 13.07 dBW/kg

## Annex B - Test Data Plots

Plot 1#

Test Date: 2024/07/05

**DUT: Intel® Wireless-AC 9260; Type: 9260NGW**
**Procedure Name: 802.11b 2437MHz AUX Body Bottom**

Communication System: 802.11b; Frequency: 2437 MHz; Duty Cycle: 1:1

Medium parameters used:  $f = 2437$  MHz;  $\sigma = 1.78$  S/m;  $\epsilon_r = 40.61$ ;  $\rho = 1000$  kg/m<sup>3</sup>; Tissue Temp (celsius)-22.5°C; Phantom section: Flat Section

DASY5 Configuration:

- Probe: EX3DV4 - SN7856; ConvF(7.08, 7.12, 7.02) @ 2437 MHz; Calibrated: 2023/12/6
- Sensor-Surface: 1.4mm (Mechanical Surface Detection)
- Electronics: DAE4 Sn1552; Calibrated: 2024/5/14
- Phantom: SAM2; Type: QD OVA 004 AA; Serial: 2089
- Measurement SW: DASY52, Version 52.10 (4); SEMCAD X Version 14.6.14 (7501)

**Configuration/802.11b 2437MHz AUX Body Bottom/Area Scan (9x10x1):** Measurement grid: dx=12mm, dy=12mm; Maximum value of SAR (measured) = 1.68 W/kg

**Configuration/802.11b 2437MHz AUX Body Bottom/Zoom Scan (7x7x7)/Cube 0:** Measurement grid: dx=5mm, dy=5mm, dz=5mm; Reference Value = 15.59 V/m; Power Drift = 0.19 dB

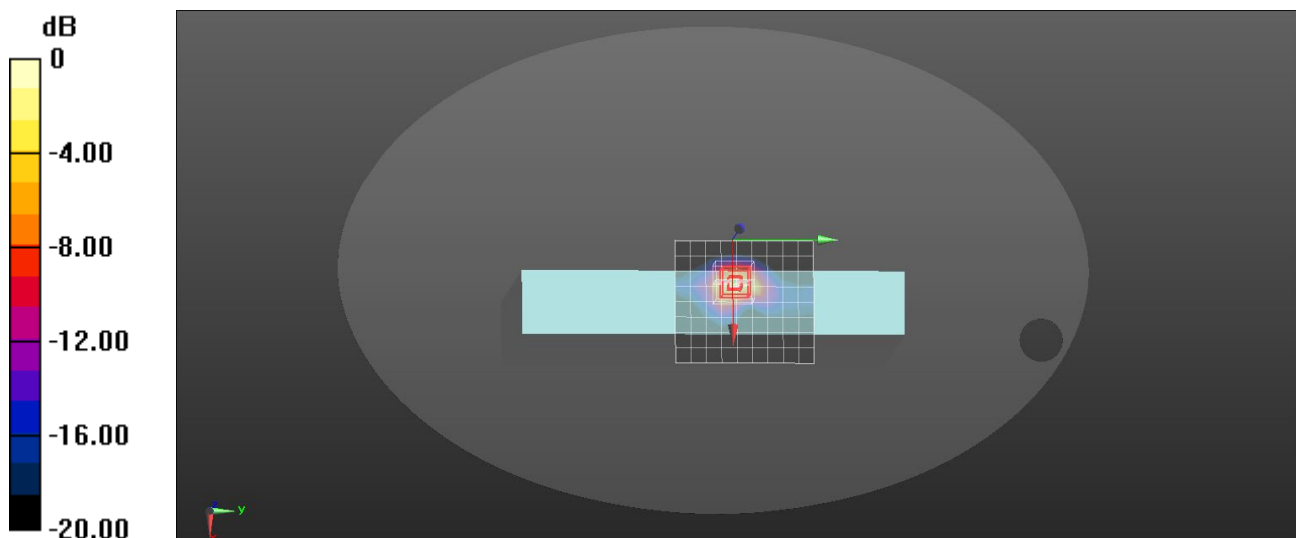
Peak SAR (extrapolated) = 2.32 W/kg

**SAR(1 g) = 0.982 W/kg; SAR(10 g) = 0.400 W/kg**

Smallest distance from peaks to all points 3 dB below = 7 mm

Ratio of SAR at M2 to SAR at M1 = 43.7%

Maximum value of SAR (measured) = 1.80 W/kg



0 dB = 1.80 W/kg = 2.55 dBW/kg

Plot 2#

Test Date: 2024/07/06

**DUT: Intel® Wireless-AC 9260; Type: 9260NGW**
**Procedure Name: 802.11n-HT40 5230MHz AUX Body Bottom**

Communication System: 802.11n; Frequency: 5230 MHz; Duty Cycle: 1:1

Medium parameters used:  $f = 5230$  MHz;  $\sigma = 4.46$  S/m;  $\epsilon_r = 35.94$ ;  $\rho = 1000$  kg/m<sup>3</sup>; Tissue Temp (celsius)-22.5°C; Phantom section: Flat Section

DASY5 Configuration:

- Probe: EX3DV4 - SN7856; ConvF(5, 5.07, 4.96) @ 5230 MHz; Calibrated: 2023/12/6
- Sensor-Surface: 1.4mm (Mechanical Surface Detection)
- Electronics: DAE4 Sn1552; Calibrated: 2024/5/14
- Phantom: SAM2; Type: QD OVA 004 AA; Serial: 2089
- Measurement SW: DASY52, Version 52.10 (4); SEMCAD X Version 14.6.14 (7501)

**Configuration/802.11n-HT40 5230MHz AUX Body Bottom/Area Scan (10x11x1):** Measurement grid:

dx=10mm, dy=10mm; Maximum value of SAR (measured) = 2.11 W/kg

**Configuration/802.11n-HT40 5230MHz AUX Body Bottom/Zoom Scan (9x9x7)/Cube 0:** Measurement grid:

dx=4mm, dy=4mm, dz=1.4mm; Reference Value = 18.80 V/m; Power Drift = -0.02 dB

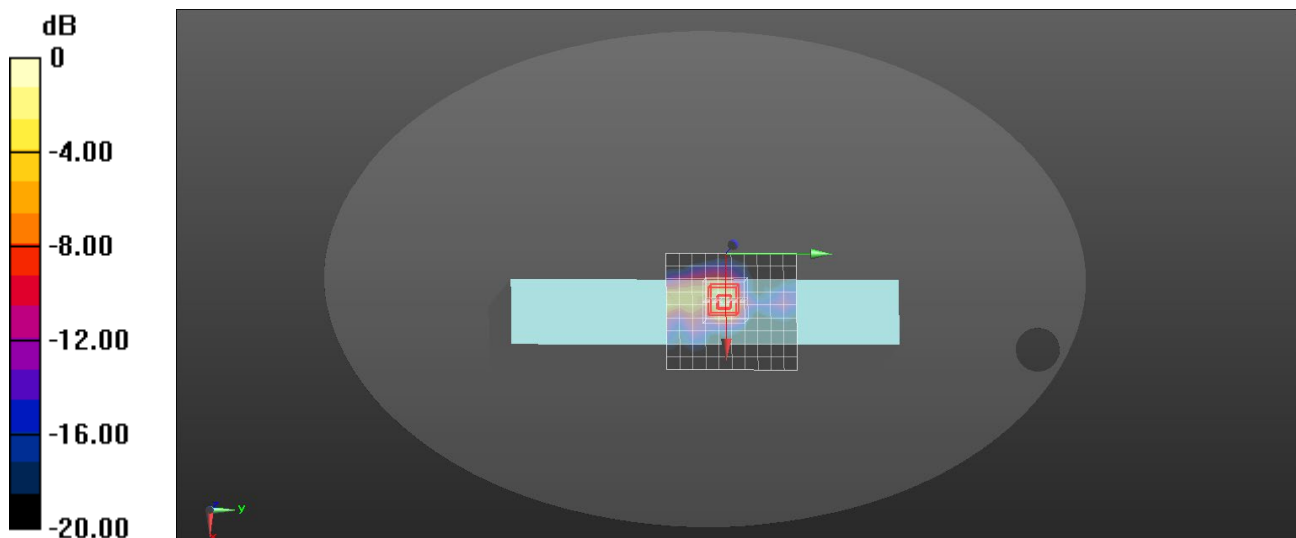
Peak SAR (extrapolated) = 4.13 W/kg

**SAR(1 g) = 1.08 W/kg; SAR(10 g) = 0.337 W/kg**

Smallest distance from peaks to all points 3 dB below = 7.5 mm

Ratio of SAR at M2 to SAR at M1 = 65.1%

Maximum value of SAR (measured) = 2.60 W/kg



0 dB = 2.60 W/kg = 4.15 dBW/kg

Plot 3#

Test Date: 2024/07/07

**DUT: Intel® Wireless-AC 9260; Type: 9260NGW**
**Procedure Name: 802.11ac-VHT80 5775MHz AUX Body Bottom**

Communication System: 802.11ac; Frequency: 5775 MHz; Duty Cycle: 1:1

Medium parameters used:  $f = 5775$  MHz;  $\sigma = 5.06$  S/m;  $\epsilon_r = 35$ ;  $\rho = 1000$  kg/m<sup>3</sup>; Tissue Temp (celsius)-22.5°C;

Phantom section: Flat Section

DASY5 Configuration:

- Probe: EX3DV4 - SN7856; ConvF(4.26, 4.29, 4.21) @ 5775 MHz; Calibrated: 2023/12/6
- Sensor-Surface: 1.4mm (Mechanical Surface Detection)
- Electronics: DAE4 Sn1552; Calibrated: 2024/5/14
- Phantom: SAM2; Type: QD OVA 004 AA; Serial: 2089
- Measurement SW: DASY52, Version 52.10 (4); SEMCAD X Version 14.6.14 (7501)

**Configuration/802.11ac-VHT80 5775MHz AUX Body Bottom/Area Scan (10x11x1):** Measurement grid:

dx=10mm, dy=10mm; Maximum value of SAR (measured) = 2.22 W/kg

**Configuration/802.11ac-VHT80 5775MHz AUX Body Bottom/Zoom Scan (7x7x7)/Cube 0:** Measurement

grid: dx=4mm, dy=4mm, dz=1.4mm; Reference Value = 20.40 V/m; Power Drift = -0.11 dB

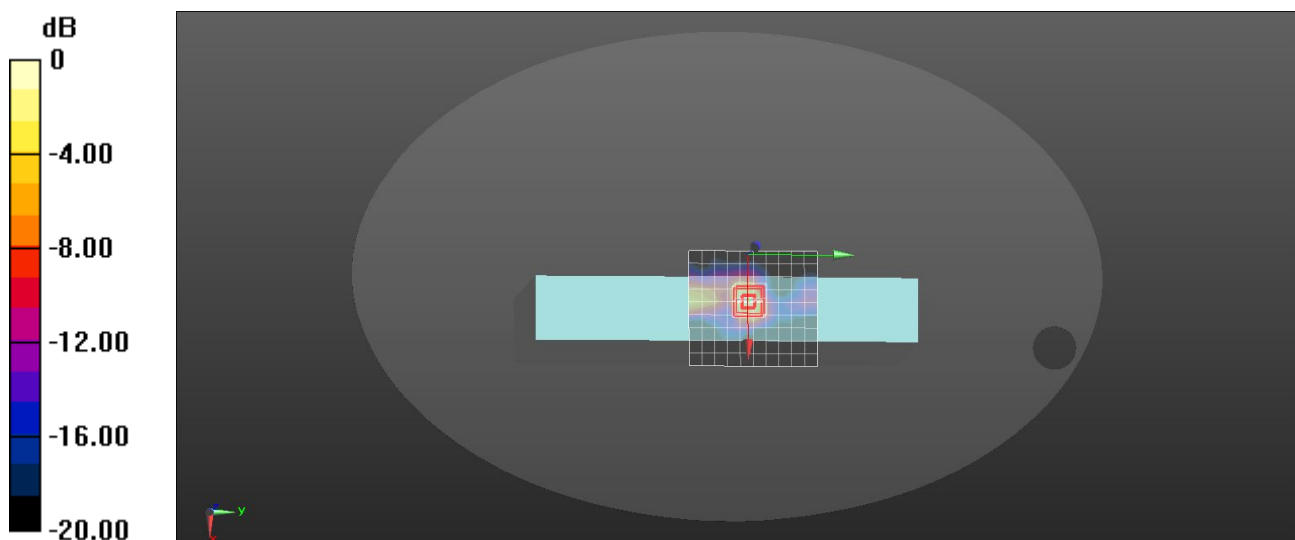
Peak SAR (extrapolated) = 4.35 W/kg

**SAR(1 g) = 1.05 W/kg; SAR(10 g) = 0.319 W/kg**

Smallest distance from peaks to all points 3 dB below = 7.2 mm

Ratio of SAR at M2 to SAR at M1 = 61.8%

Maximum value of SAR (measured) = 2.58 W/kg



0 dB = 2.58 W/kg = 4.12 dBW/kg



Plot 4#

Test Date: 2024/07/05

**DUT: Intel® Wireless-AC 9260; Type: 9260NGW**
**Procedure Name: Bluetooth DH5 2480MHz Body Bottom**

Communication System: Bluetooth; Frequency: 2480 MHz; Duty Cycle: 1:1

Medium parameters used:  $f = 2480$  MHz;  $\sigma = 1.81$  S/m;  $\epsilon_r = 40.54$ ;  $\rho = 1000$  kg/m<sup>3</sup>; Tissue Temp (celsius)-22.5°C; Phantom section: Flat Section

DASY5 Configuration:

- Probe: EX3DV4 - SN7856; ConvF(7.08, 7.12, 7.02) @ 2480 MHz; Calibrated: 2023/12/6
- Sensor-Surface: 1.4mm (Mechanical Surface Detection)
- Electronics: DAE4 Sn1552; Calibrated: 2024/5/14
- Phantom: SAM2; Type: QD OVA 004 AA; Serial: 2089
- Measurement SW: DASY52, Version 52.10 (4); SEMCAD X Version 14.6.14 (7501)

**Configuration/Bluetooth DH5 2480MHz Body Bottom/Area Scan (9x10x1):** Measurement grid: dx=12mm, dy=12mm; Maximum value of SAR (measured) = 0.161 W/kg

**Configuration/Bluetooth DH5 2480MHz Body Bottom/Zoom Scan (7x7x7)/Cube 0:** Measurement grid: dx=5mm, dy=5mm, dz=5mm; Reference Value = 4.192 V/m; Power Drift = -0.03 dB

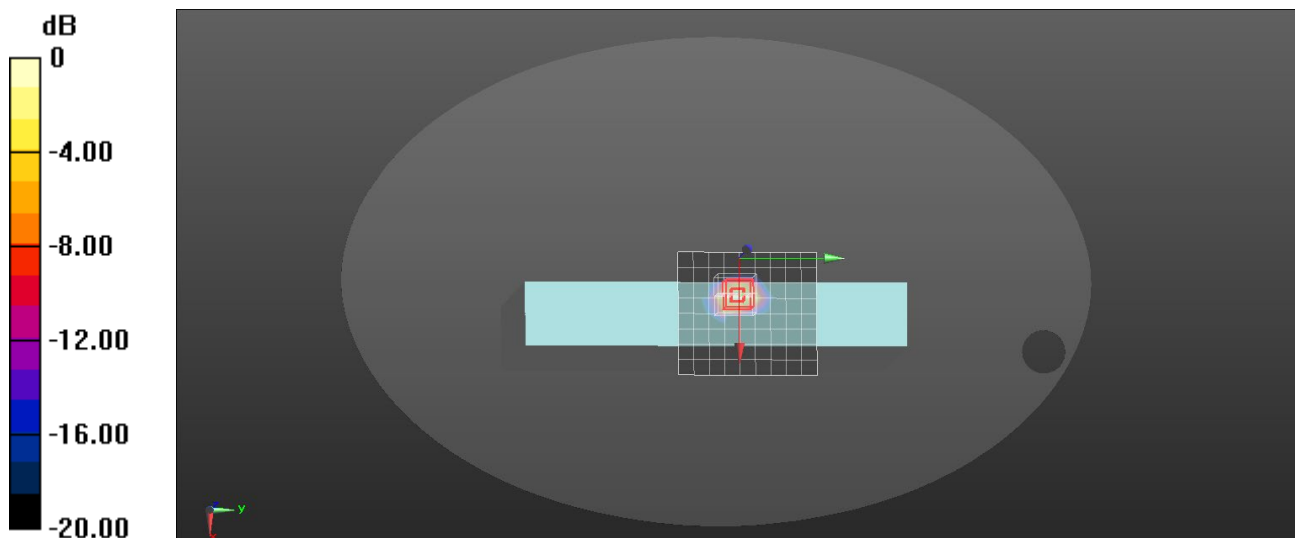
Peak SAR (extrapolated) = 0.230 W/kg

**SAR(1 g) = 0.091 W/kg; SAR(10 g) = 0.034 W/kg**

Smallest distance from peaks to all points 3 dB below = 6.3 mm

Ratio of SAR at M2 to SAR at M1 = 41.6%

Maximum value of SAR (measured) = 0.172 W/kg



0 dB = 0.172 W/kg = -7.64 dBW/kg

Plot 5#

Test Date: 2024/07/05

**DUT: Intel® Wireless-AC 9260; Type: 9260NGW**
**Procedure Name: 802.11b 2462MHz Main Body Left**

Communication System: 802.11b; Frequency: 2462 MHz; Duty Cycle: 1:1

Medium parameters used:  $f = 2462$  MHz;  $\sigma = 1.8$  S/m;  $\epsilon_r = 40.57$ ;  $\rho = 1000$  kg/m<sup>3</sup>; Tissue Temp (celsius)-22.5°C; Phantom section: Flat Section

DASY5 Configuration:

- Probe: EX3DV4 - SN7856; ConvF(7.08, 7.12, 7.02) @ 2462 MHz; Calibrated: 2023/12/6
- Sensor-Surface: 1.4mm (Mechanical Surface Detection)
- Electronics: DAE4 Sn1552; Calibrated: 2024/5/14
- Phantom: SAM2; Type: QD OVA 004 AA; Serial: 2089
- Measurement SW: DASY52, Version 52.10 (4); SEMCAD X Version 14.6.14 (7501)

**Configuration/802.11b 2462MHz Main Body Left/Area Scan (9x8x1):** Measurement grid: dx=12mm, dy=12mm; Maximum value of SAR (measured) = 1.04 W/kg

**Configuration/802.11b 2462MHz Main Body Left/Zoom Scan (7x7x7)/Cube 0:** Measurement grid: dx=5mm, dy=5mm, dz=5mm; Reference Value = 20.73 V/m; Power Drift = -0.05 dB

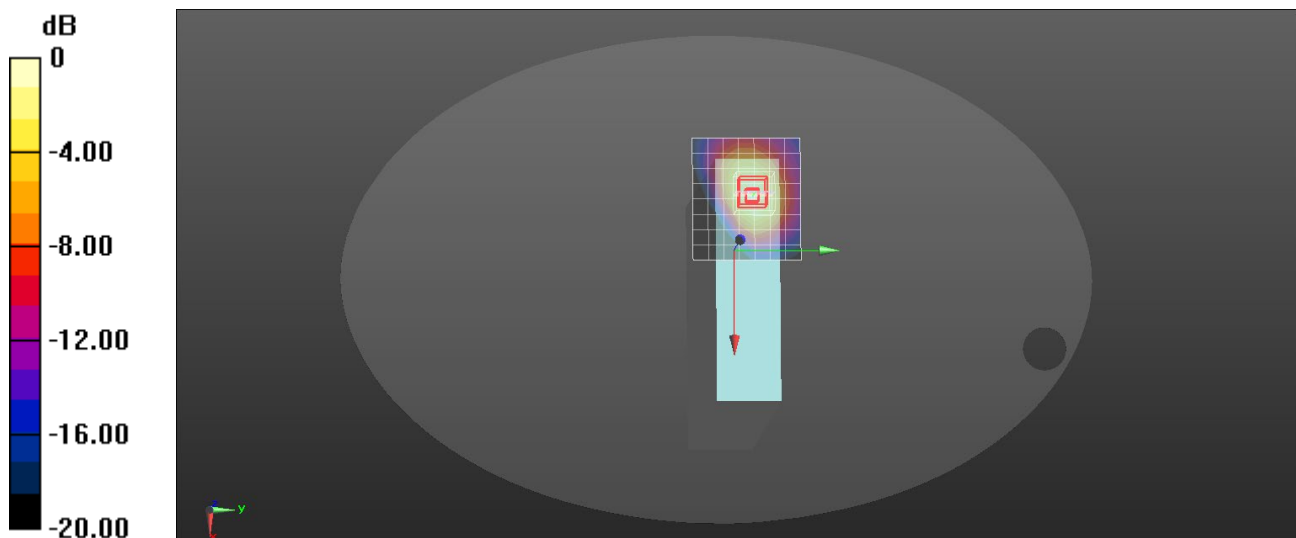
Peak SAR (extrapolated) = 1.26 W/kg

**SAR(1 g) = 0.686 W/kg; SAR(10 g) = 0.357 W/kg**

Smallest distance from peaks to all points 3 dB below = 13 mm

Ratio of SAR at M2 to SAR at M1 = 54.4%

Maximum value of SAR (measured) = 1.05 W/kg



0 dB = 1.05 W/kg = 0.21 dBW/kg

Plot 6#

Test Date: 2024/07/06

**DUT: Intel® Wireless-AC 9260; Type: 9260NGW**
**Procedure Name: 802.11a 5240MHz Main Body Back**

Communication System: 802.11a; Frequency: 5240 MHz; Duty Cycle: 1:1

Medium parameters used:  $f = 5240$  MHz;  $\sigma = 4.47$  S/m;  $\epsilon_r = 35.92$ ;  $\rho = 1000$  kg/m<sup>3</sup>; Tissue Temp (celsius)-22.5°C; Phantom section: Flat Section

DASY5 Configuration:

- Probe: EX3DV4 - SN7856; ConvF(5, 5.07, 4.96) @ 5240 MHz; Calibrated: 2023/12/6
- Sensor-Surface: 1.4mm (Mechanical Surface Detection)
- Electronics: DAE4 Sn1552; Calibrated: 2024/5/14
- Phantom: SAM2; Type: QD OVA 004 AA; Serial: 2089
- Measurement SW: DASY52, Version 52.10 (4); SEMCAD X Version 14.6.14 (7501)

**Configuration/802.11a 5240MHz Main Body Back/Area Scan (12x8x1):** Measurement grid: dx=10mm, dy=10mm; Maximum value of SAR (measured) = 2.08 W/kg

**Configuration/802.11a 5240MHz Main Body Back/Zoom Scan (9x9x7)/Cube 0:** Measurement grid: dx=4mm, dy=4mm, dz=1.4mm; Reference Value = 18.42 V/m; Power Drift = -0.17 dB

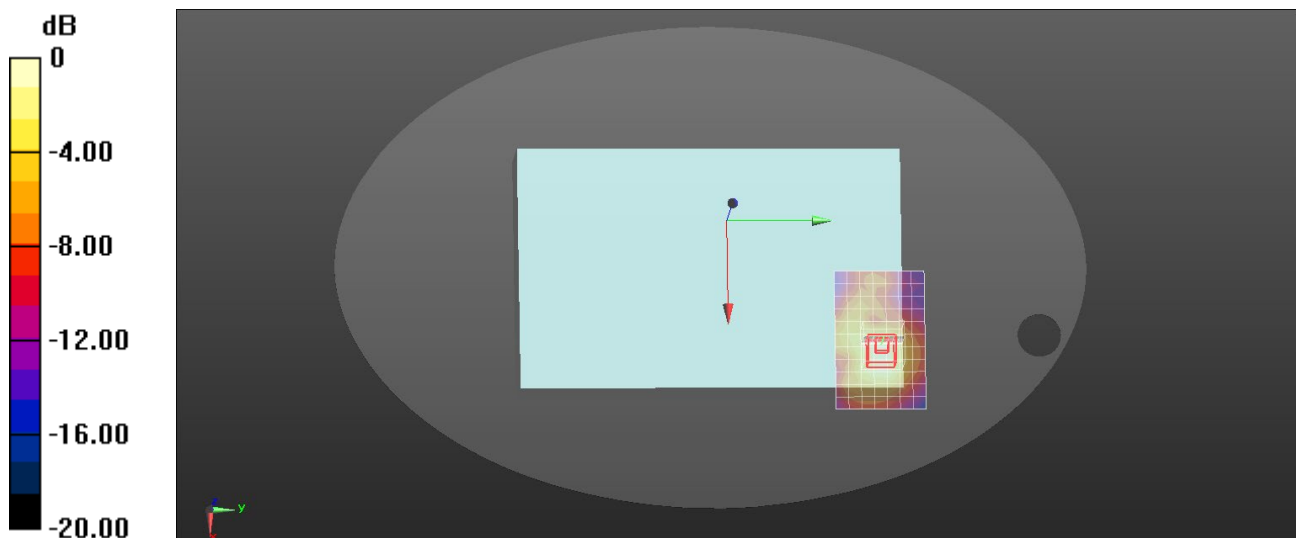
Peak SAR (extrapolated) = 3.50 W/kg

**SAR(1 g) = 1.05 W/kg; SAR(10 g) = 0.432 W/kg**

Smallest distance from peaks to all points 3 dB below = 9.1 mm

Ratio of SAR at M2 to SAR at M1 = 66.4%

Maximum value of SAR (measured) = 2.24 W/kg



0 dB = 2.24 W/kg = 3.50 dBW/kg

Plot 7#

Test Date: 2024/07/07

**DUT: Intel® Wireless-AC 9260; Type: 9260NGW**
**Procedure Name: 802.11ac-VHT80 5775MHz Main Body Left**

Communication System: 802.11ac; Frequency: 5775 MHz; Duty Cycle: 1:1

Medium parameters used:  $f = 5775 \text{ MHz}$ ;  $\sigma = 5.06 \text{ S/m}$ ;  $\epsilon_r = 35$ ;  $\rho = 1000 \text{ kg/m}^3$ ; Tissue Temp (celsius)-22.5°C;

Phantom section: Flat Section

DASY5 Configuration:

- Probe: EX3DV4 - SN7856; ConvF(4.26, 4.29, 4.21) @ 5775 MHz; Calibrated: 2023/12/6
- Sensor-Surface: 1.4mm (Mechanical Surface Detection)
- Electronics: DAE4 Sn1552; Calibrated: 2024/5/14
- Phantom: SAM2; Type: QD OVA 004 AA; Serial: 2089
- Measurement SW: DASY52, Version 52.10 (4); SEMCAD X Version 14.6.14 (7501)

**Configuration/802.11ac-VHT80 5775MHz Main Body Left/Area Scan (11x9x1):** Measurement grid:

 $dx=10\text{mm}$ ,  $dy=10\text{mm}$ ; Maximum value of SAR (measured) = 2.25 W/kg

**Configuration/802.11ac-VHT80 5775MHz Main Body Left/Zoom Scan (8x8x7)/Cube 0:** Measurement grid:

 $dx=4\text{mm}$ ,  $dy=4\text{mm}$ ,  $dz=1.4\text{mm}$ ; Reference Value = 16.20 V/m; Power Drift = 0.14 dB

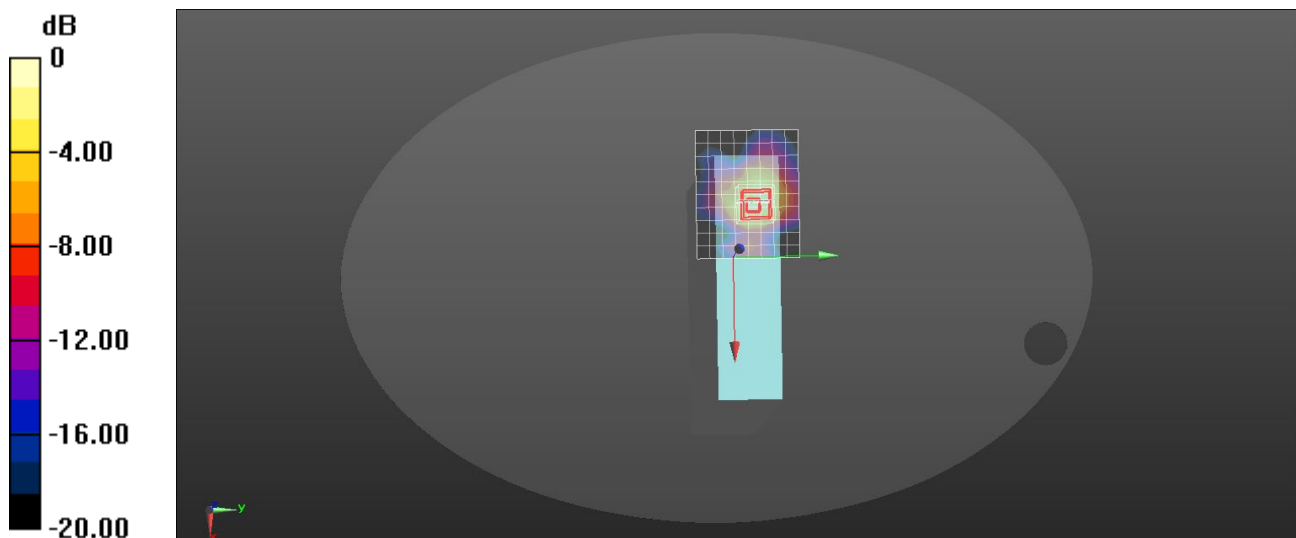
Peak SAR (extrapolated) = 3.84 W/kg

**SAR(1 g) = 1.02 W/kg; SAR(10 g) = 0.372 W/kg**

Smallest distance from peaks to all points 3 dB below = 7.2 mm

Ratio of SAR at M2 to SAR at M1 = 63.2%

Maximum value of SAR (measured) = 2.33 W/kg



0 dB = 2.33 W/kg = 3.67 dBW/kg

## **Annex C - SAR Test Setup Photograph**

Please refer to document "2407RSU005-UT".

## **Annex D - EUT Photograph**

Please refer to EUT Photograph.

## **Annex E - Equipment Calibration Report**

Please refer to document “Annex E - Equipment Calibration Report.pdf”.

\_\_\_\_\_ The End \_\_\_\_\_