

X2-pro Quick Start Manual

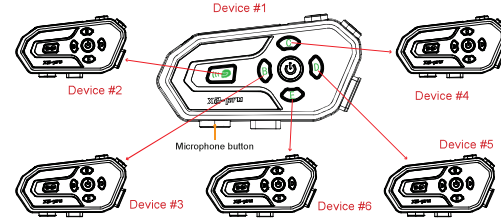
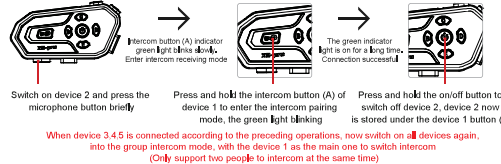
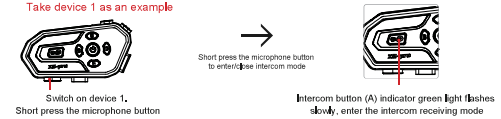
Product Overview



Important Reminder:
Before installing the headset, please connect your mobile phone according to the quick manual guide to test the sound effect and volume.
If there is a big difference in sound effect and volume after installing into the helmet, please adjust the position of the speaker inside the helmet.

6 people connect and 2 people intercom mode

When making a group intercom connection, it is recommended that you use your mobile phone to connect to the blue tooth before making the intercom connection.



Introduction to wireless intercom connection operation
(intercom and music sharing are turned off by default every time you turn on)
1: 6 riders intercom (usage of intercom A/B/C/D/E buttons)
The following is an example of the connection process with device 1 as the host (The following instructions refer to device 1,2,3,4,5,6 as No.1,2,3,4,5,6 for short):

First, turn on device No. 1, press the intercom button make sure the device No. 1 enter the intercom mode, the green light of the intercom key (A) blinks slowly, enter the intercom receiving status, turn on device No. 2, press the intercom key to enter the intercom mode, the green light of the intercom key (A) blinks slowly, enter the intercom receiving status, press and hold the intercom key No. 1 (A) to enter the intercom pairing status, device No. 2 remains stationary. The green light will keep on, after successful connection, shut down No. 4, and No. 4 will be stored under the key C of No. 1, the device will be stored under the Key A of the device No. 1.

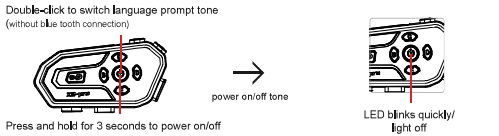
The host device No. 1, does not shut down, keeps in the intercom mode, turn on No. 3, press the intercom button and enter to the intercom receiving mode, then press and hold the Key B of No. 1, enter to the intercom pairing status, the green light will be bright, after successful connection, shut down No. 3, and No. 3 will be stored under the key B of No. 1.

The host device No. 1, does not shut down, keeps in the intercom mode, turn on No. 4, press the intercom button and enter to the intercom receiving mode, then press and hold the Key C of No. 1, enter to the intercom pairing status, the green light will be bright, after successful connection, shut down No. 4, and No. 4 will be stored under the key D of No. 1.

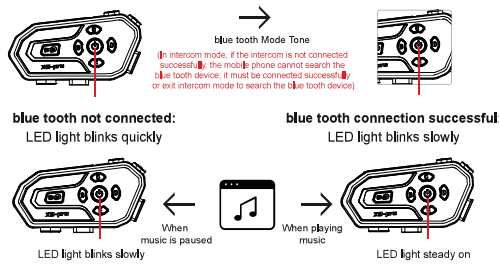
The host device No. 1, does not shut down, keeps in the intercom mode, turn on No. 5, press the intercom button and enter to the intercom receiving mode, then press and hold the Key E of No. 1, enter to the intercom pairing status, the green light will be bright, after successful connection, shut down No. 5, and No. 5 will be stored under the key E of No. 1.

After the operations are completed, all the devices are turned on, enter to the intercom mode, and switch the intercom with the device No. 1 as the host (only two people can talk to each other at the same time).
When No. 1 wants to talk to No. 2, press the Key A of the No. 1 to connect No. 2.
When No. 1 wants to talk to No. 3, press the Key B of the No. 1 to connect No. 3.
When No. 1 wants to talk to No. 4, press the Key C of the No. 1 to connect No. 4.
When No. 1 wants to talk to No. 5, press the Key D of the No. 1 to connect No. 5.
When No. 1 wants to talk to No. 6, press the Key E of the No. 1 to connect No. 6.

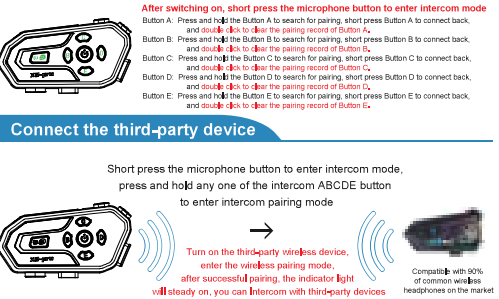
Power on/off



Blue tooth connection



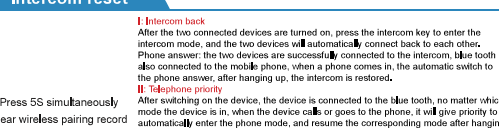
Intercom button A/B/C/D/E button functions



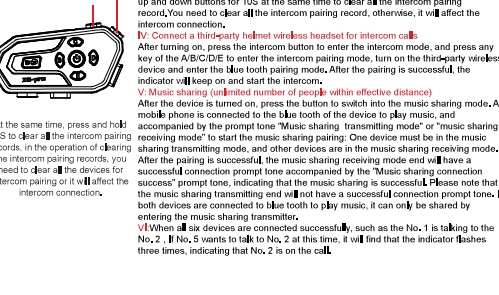
Connect the third-party device



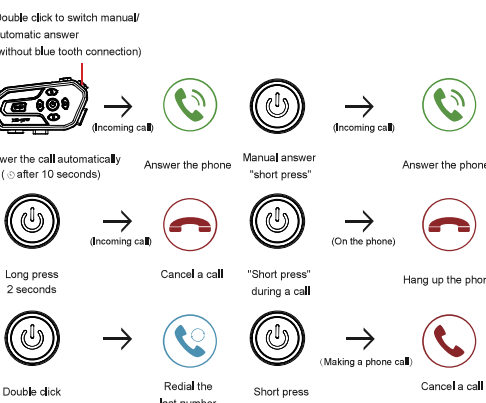
Voice assistant



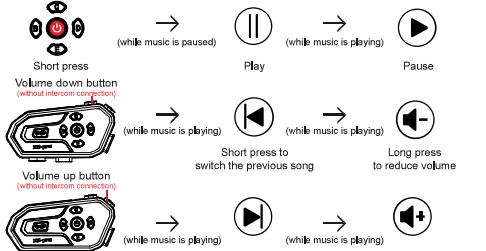
Intercom reset



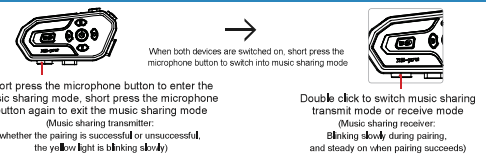
Telephone function



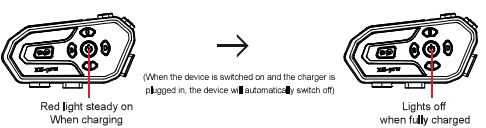
Music function



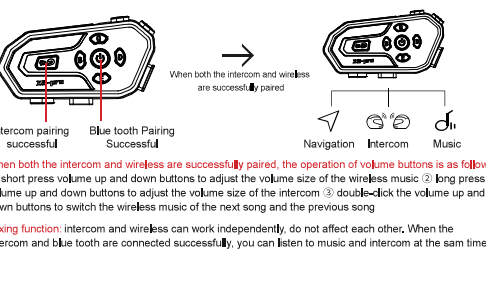
Music Sharing



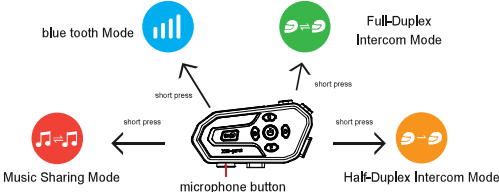
Charging function



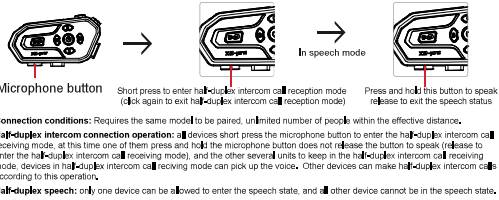
Sound mixing function



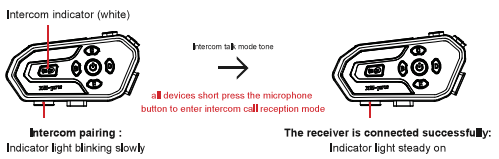
Mic button function



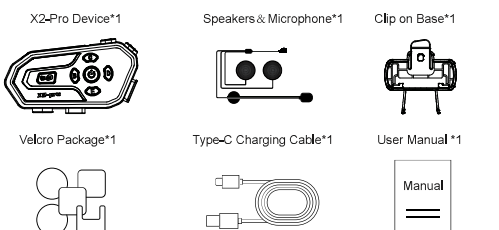
Half-Duplex intercom function



Half-Duplex intercom connection



Product List



Caveat

1. To avoid explosion, please do not put the product into the flame;
2. Please do not disassemble the product to avoid damage to the electronic components of the product;
3. Please keep away from sharp objects to avoid damage to the product;
4. Please keep in a dry place if not used for long time;
5. Before using the wireless device, please fully charge it;
6. If the red light does not come on while charging, it may be the voltage is too low;
7. To extend the life of the built-in lithium polymer battery, please charge the device at least once a month.

Instruction warning

NOTE: This product has been tested, meet the restrictions of Class B digital device, pursuant to part 15 of the FCC Rules. These limits are designed to provide reasonable protection against harmful interference in a residential installation. The equipment generates uses and can radiate radio frequency energy and, if not installed and used in accordance with the instructions may cause harmful interference to radio communications. However, there is no guarantee that interference will not occur in a particular installation. If this equipment does cause harmful interference to radio or television reception, which can be determined by turning the equipment off and on, the user is encouraged to try to correct the interference by one or more of the following measures:
-Reorient or relocate the receiving antenna.
-Increase the separation between the device and receiver.
-Connect the device into an outlet on a circuit different from that to which the receiver is connected.
-Consult the dealer or an experienced radio/TV technician for help.
Changes or modifications not expressly approved by the party responsible for compliance could void the user's authority to operate the device.
This device complies with Part 15 of the FCC Rules. The operation needs to fulfill the following two conditions,
1)The device may not cause harmful interference.
2)The device must accept any interference received, including interference that may cause undesired operation.

FCC ID:2A9MI-X2-pro

FCC Statement:

This device complies with part 15 of the FCC Rules. Operation is subject to the following two conditions:

- (1) This device may not cause harmful interference, and
- (2) this device must accept any interference received, including interference that may cause undesired operation.

This equipment has been tested and found to comply with the limits for a Class B digital device, pursuant to part 15 of the FCC Rules. These limits are designed to provide reasonable protection against harmful interference in a residential installation. This equipment generates, uses and can radiate radio frequency energy and, if not installed and used in accordance with the instructions, may cause harmful interference to radio communications. However, there is no guarantee that interference will not occur in a particular installation. If this equipment does cause harmful interference to radio or television reception, which can be determined by turning the equipment off and on, the user is encouraged to try to correct the interference by one or more of the following measures:

- Reorient or relocate the receiving antenna.
- Increase the separation between the equipment and receiver.
- Connect the equipment into an outlet on a circuit different from that to which the receiver is connected.
- Consult the dealer or an experienced radio/TV technician for help.

Caution: Any changes or modifications not expressly approved by the party responsible for compliance could void the user's authority to operate the equipment.

This equipment complies with FCC radiation exposure limits set forth for an uncontrolled environment. This transmitter must not be co-located or operating in conjunction with any other antenna or transmitter.