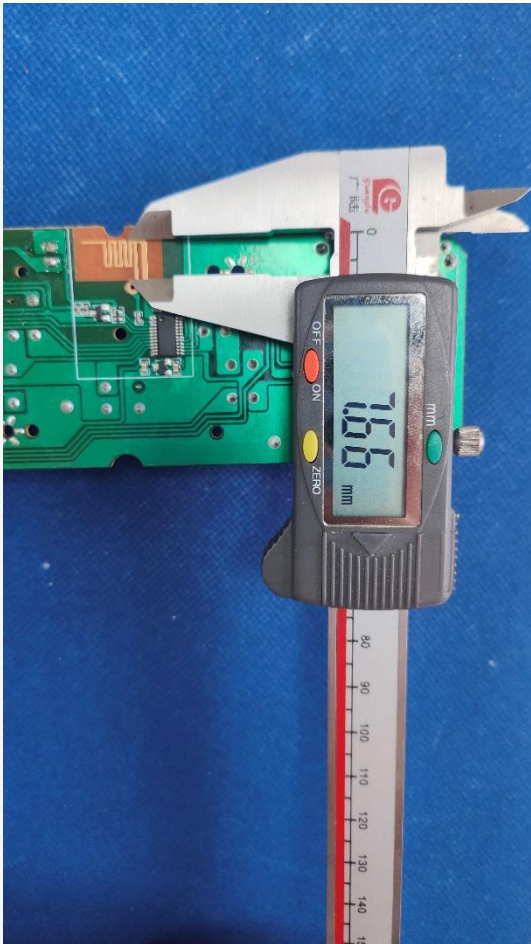
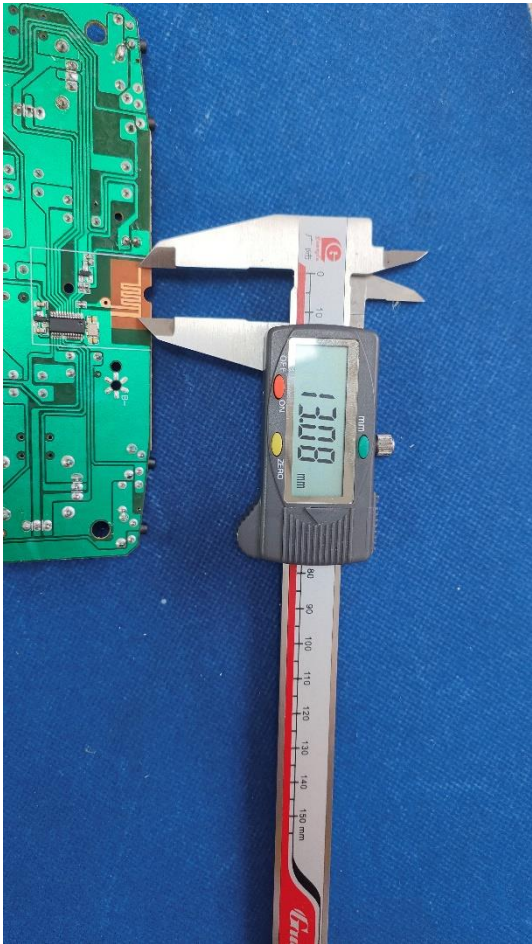


# 1. Antenna Description:

Antenna type	PCB antenna
Model	E99
Frequency range	2400-2500MHz
Manufacturer	Shantou Ruiou Innovation Technology Co.LTD.
Address	Shantou Chenghai District Longdu town, Qianmei village Residential garden No.36, Shantou, Guangdong, China
ANT Peak Gain	0.17 dBi

# 2. Antenna Photo:

Length:13.08mm  
Width:7.66mm



### 3. Test Equipment & Conditions

#### 3.1 Test instrument

VSWR is tested using Agilent E5071B connected to a hand mechanism, and the status is free space.

#### 3.2 Test environment and methods

Dark room specifications: ETS-743

TD-SCDMA test equipment: StarPoint SP6010/Agilent 8960

LTE-TDD/FDD-SCDMA test equipment: StarPoint SP8011/CMW500

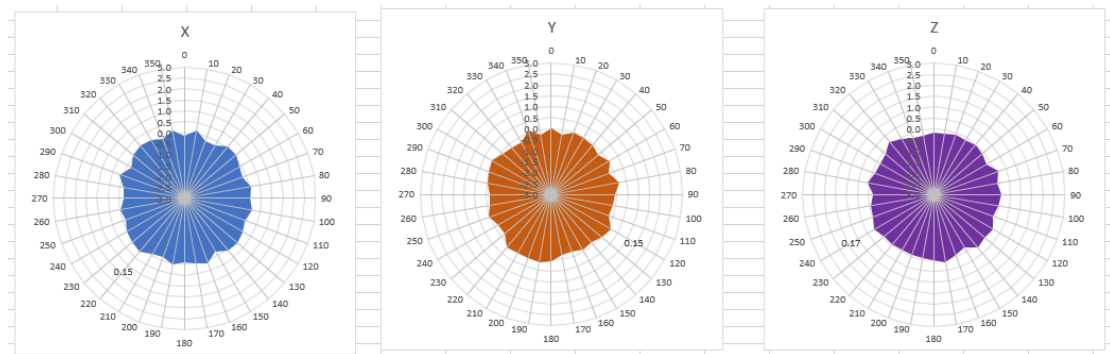
WCDMA/GSM/CDMA test equipment: Agilent 8960

Passive efficiency testing equipment: Agilent Technologies E5071B

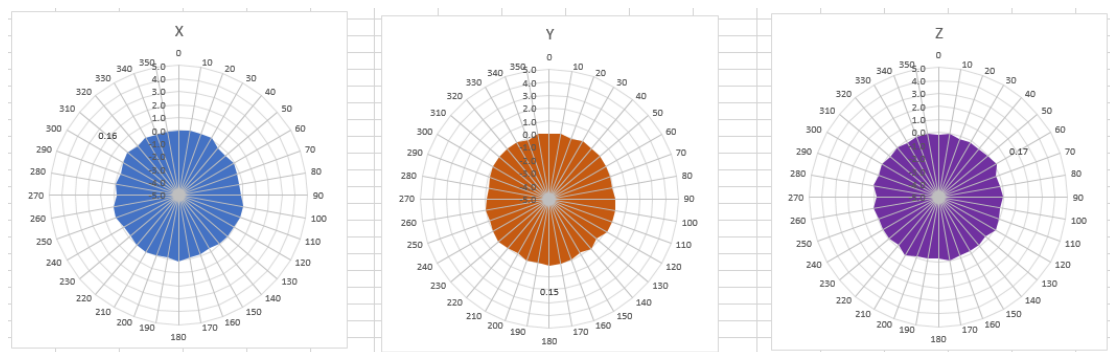


## 4 . Antenna Radiation Pattern

2400MHz



2450MHz



2500MHz

