



Appendix - Internal Photographs of EUT Constructional Details

Model: CP32

Photo 1



Photo 2





Photo 3

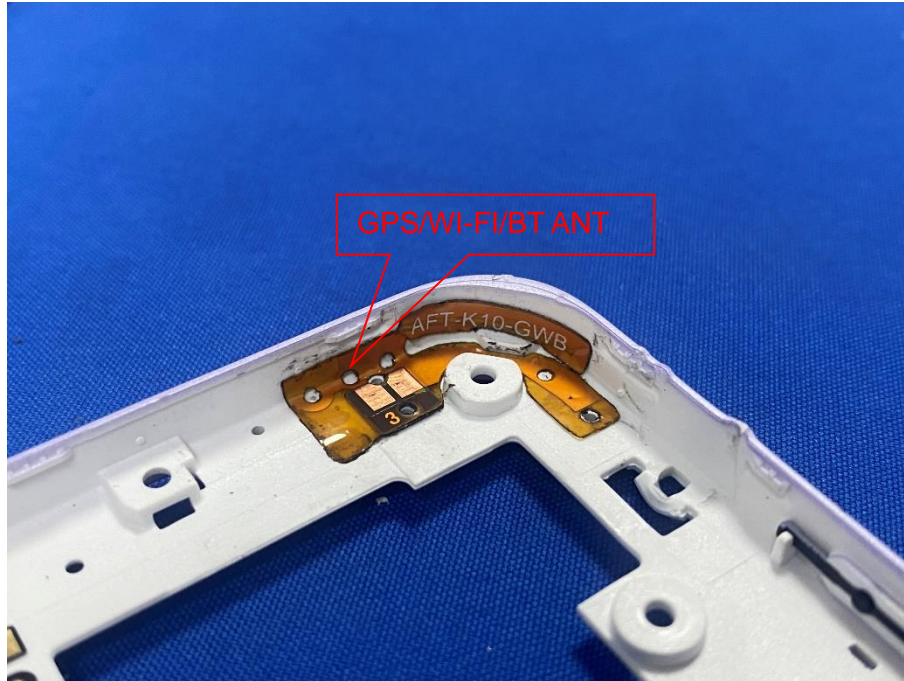


Photo 4

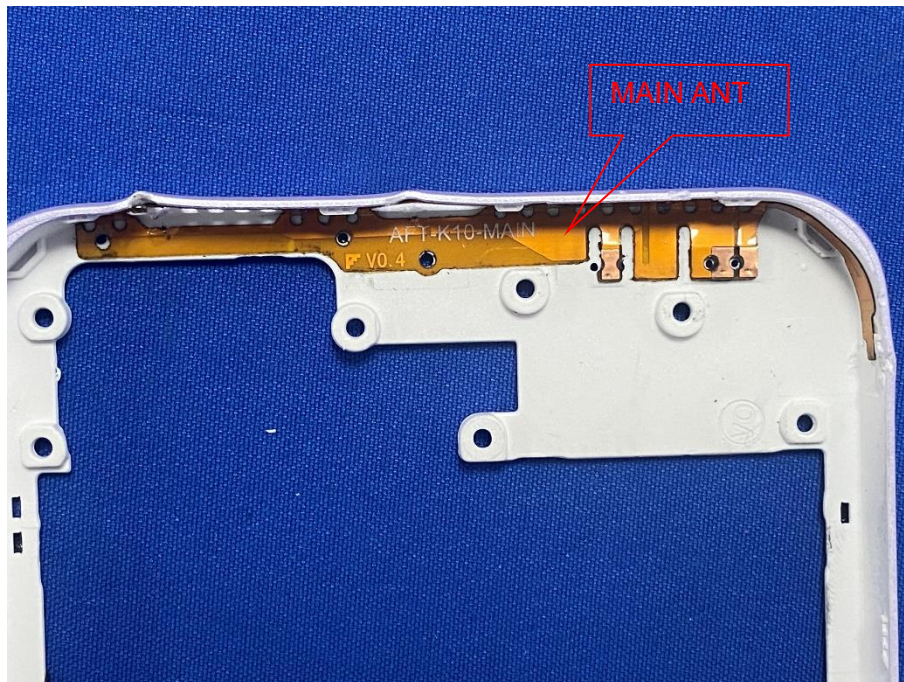




Photo 5

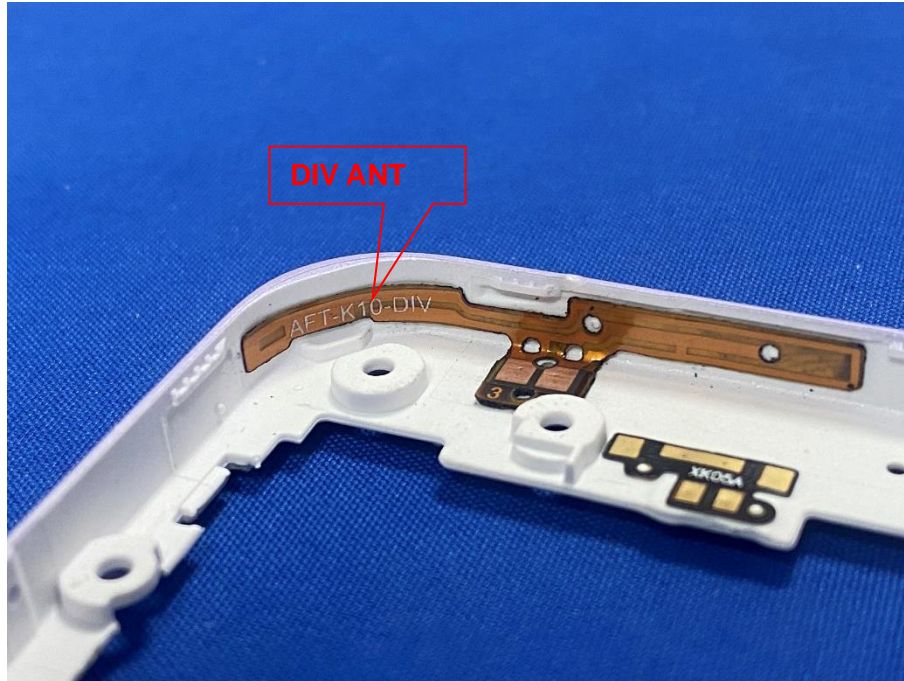


Photo 6

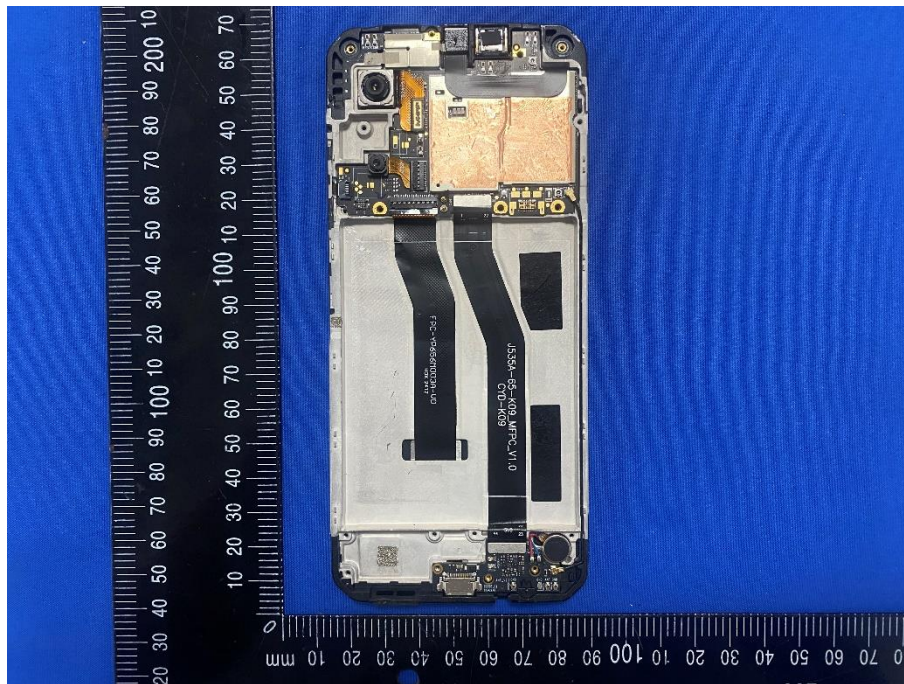




Photo 7

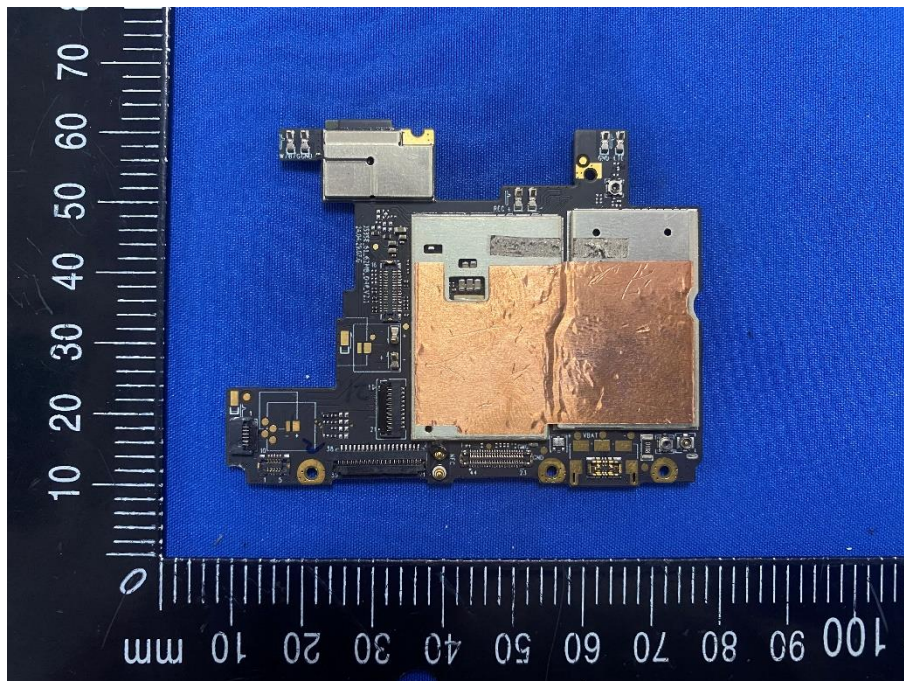


Photo 8

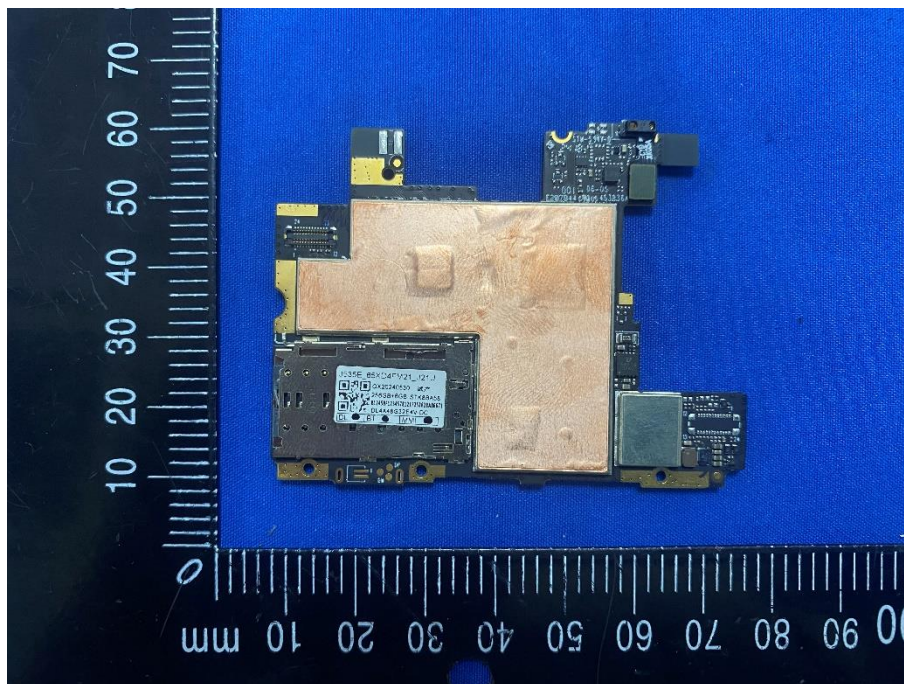




Photo 9

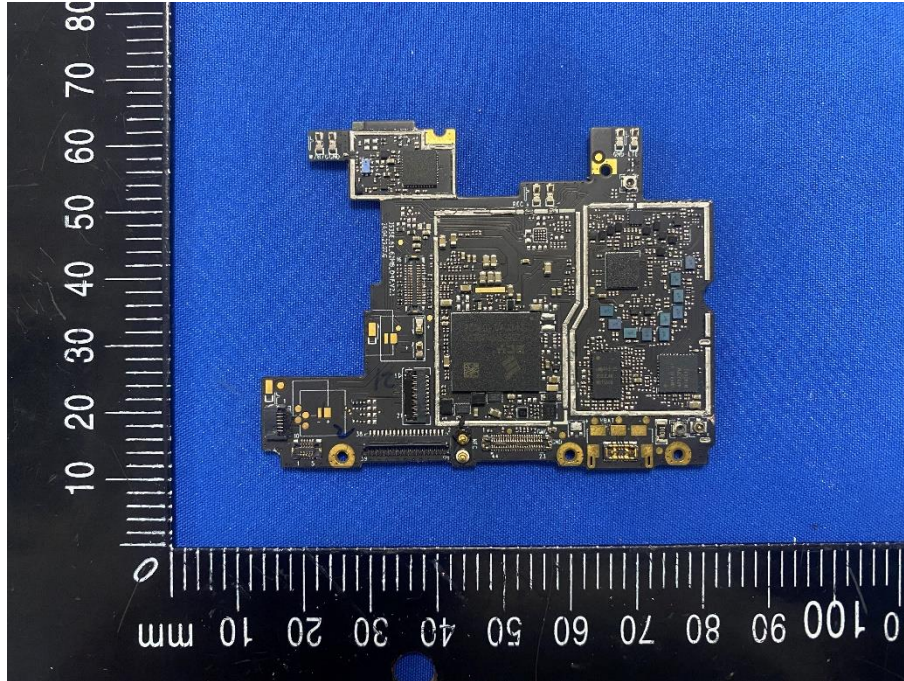
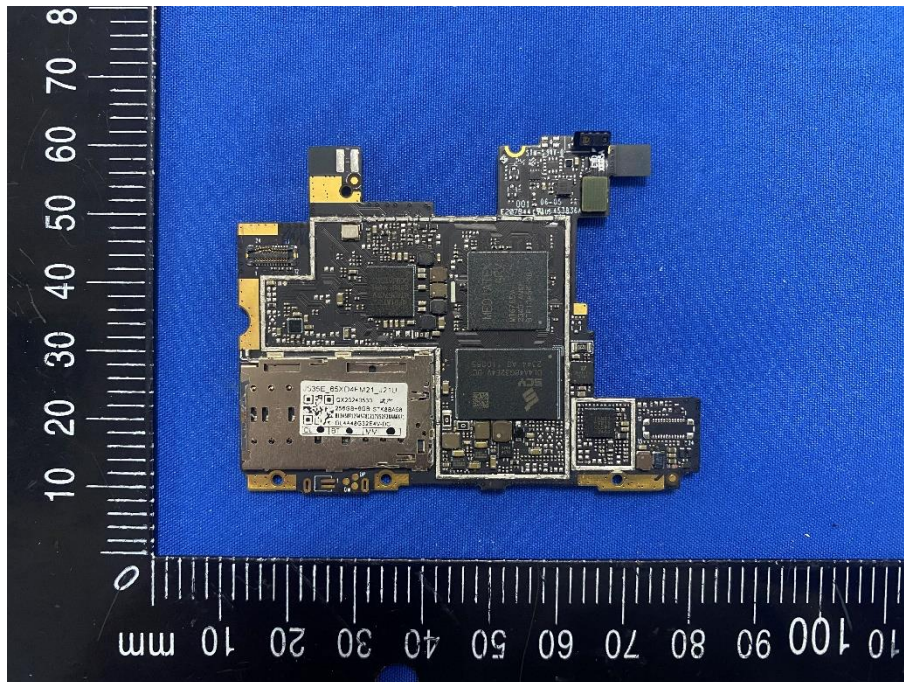


Photo 10





DL4A48G32E4V DC
2344 A0 110085

J535E_65XD4FM21_J21U
266B+6G8 STK6BA58
0X20240530

MEDIATEK
MT6357CRV
2336-ANPH
DCMJ6TSS

MEDIATEK
ARM
MT6765V
2343-AMSH
BTP13A54-XB

A close-up photograph of a MediaTek MT6631N mobile phone chip mounted on a black printed circuit board (PCB). The chip is a square integrated circuit with a black surface and gold-colored pins. The text on the chip includes "MEDIATEK", "MT6631N", "2408-BXEL", "A4C87486", and "ATGH2159". To the left of the chip, there are two gold-colored connectors labeled "V8/GND". Below the chip, there are several gold-colored connectors, one of which is labeled "REC +". The PCB is populated with various other components, including small surface-mount capacitors and resistors. The background is a solid blue color.



Photo 13

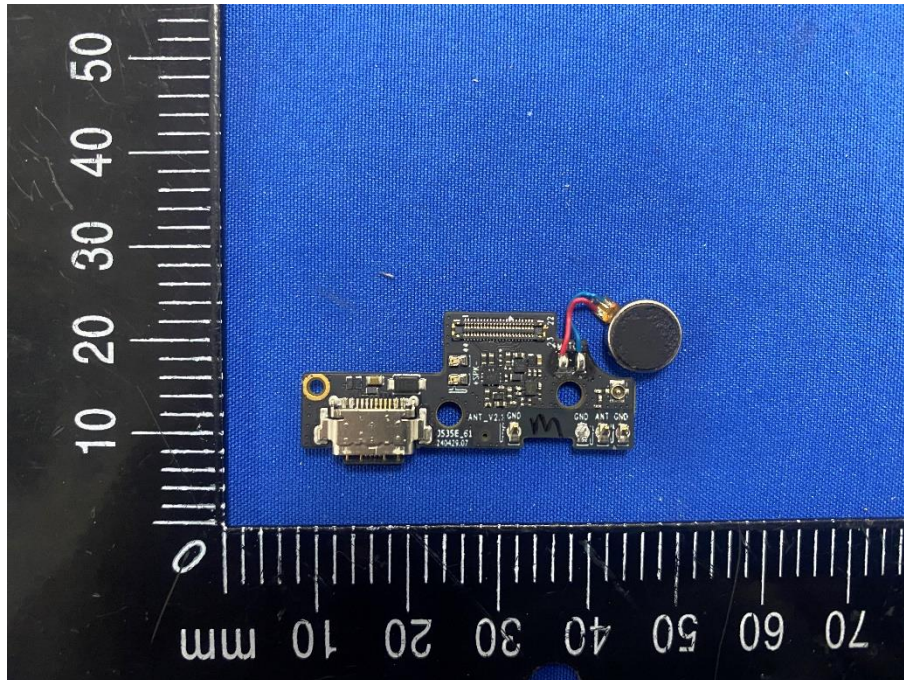


Photo 14

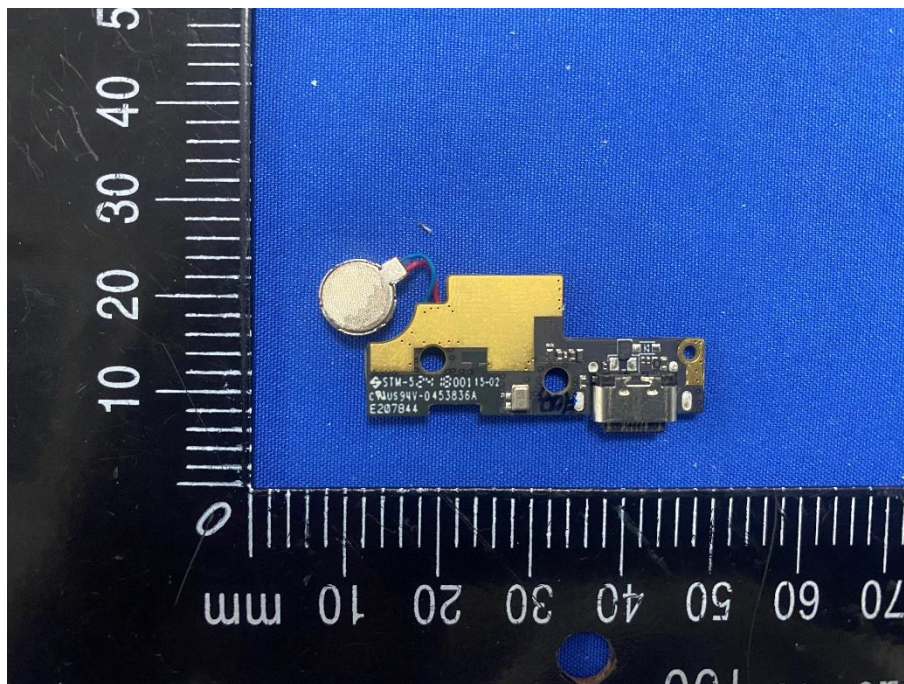




Photo 15



Photo 16

