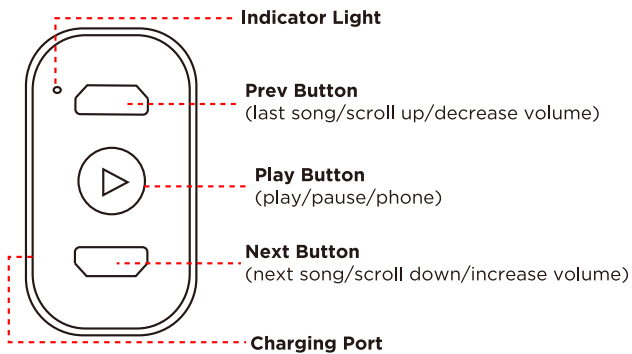
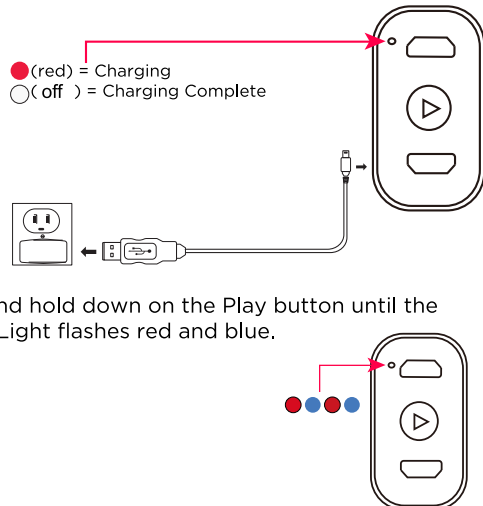


Thank you for purchasing the Vivitar Wireless Remote Phone Controller. Use your phone controller to use your phone at a distance. For best results, read this manual before using your Remote Phone Controller.

## Setting Up



1. Insert one end of the included charging cable into the charging port on your Remote Phone Controller.
2. Insert the other end of the charging cable into the USB port of a computer or suitable USB charging adapter



3. Press and hold down on the Play button until the Indicator Light flashes red and blue.

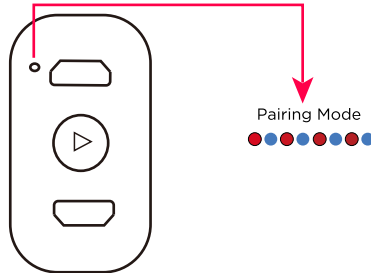
**Note:** If your phone is an ios system, turn on the "Assistive Touch" function in your phone settings before you connect to the device.

You can find the setting by the following steps:

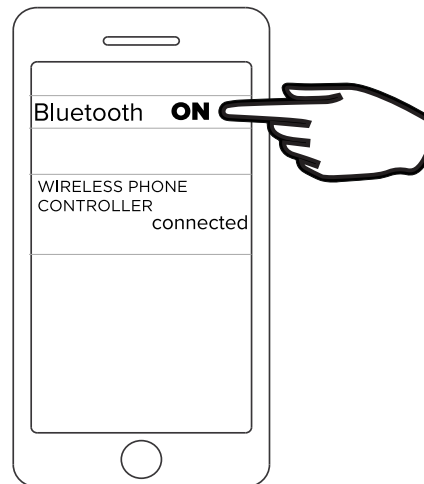
Android system: Settings -Accessibility -Touch -Assistive Touch

## Bluetooth Pairing

Once your Remote Phone Controller is powered on it will enter Bluetooth pairing mode. During this mode the Indicator Light will flash red and blue.



Go to the Bluetooth settings menu on your phone. Make sure the Bluetooth is turned on. Connect to the device listed as "WIRELESS PHONE CONTROLLER."



## Modes

Your Remote Phone Controller has three modes it can use. Press the PREV and NEXT buttons down at the same time for approximately 5 seconds to change between modes.

### MUSIC/CALL

- Next Song - Press Next button.
- Increase Volume - Press and hold Next button.
- Previous Song - Press Prev button.
- Decrease Volume - Press and hold Prev button.
- Play/Pause - Press Play button.
- ON/OFF - Press and hold Play button.
- Answer/End Call - press Play button.
- Reject Call - Double press Play Button.

**Note :**Before handling the phone calling, please make sure your controller is in music mode instead of reading /video mold .

### READING/VIDEO

- Next Video - Press the Next button.
- Previous Video - Press the Prev button.
- Play/Pause - Press the Play button.
- Like Video - Double press the Play button.
- Next Page - Double click the Next button.
- Pervious Page-Double click the Prev button.

### PHOTO

**Note:** Before turning on your camera make sure you are first on reading/video mode.

Take Picture - Press and hold Next or Prev button for approximately one second.

Continuous Shooting/Burst Mode - Press and hold Next or Prev for approximately two seconds.

Focus - Press Play button.

Alter Exposure - Press Next or Prev.

Change Camera Mode - Double press Next or Prev.

## Specifications

**Input:** DC 5V=150mA

**Battery:** rechargeable Lithium-ion battery, 25mAh 3.7V

**Bluetooth Range:** Approximately 10 meters (33 feet)

## Features

- Long range scroll control.
- Volume control, play/pause, send likes.
- Remote camera and video use.
- Built-in rechargeable battery that comes approximately 80% charged.

## Contents

- Wireless Remote Phone Controller
- USB-C Charging Cable
- User's Manual

## Safety Precautions

When using your Remote Phone Controller, basic safety precautions should always be followed, including the following:

1. READ ALL INSTRUCTIONS BEFORE USING YOUR REMOTE PHONE CONTROLLER.
2. Never expose your remote phone controller to high temperatures, extreme cold, high humidity or any moisture or water.
3. In order to avoid the risk of electric shock, never attempt to open your remote phone controller or repair it without the assistance of certified professionals.
4. Your remote phone controller is not to be used by children or the infirm without suitable adult supervision.
5. Always press all buttons carefully. Do not manhandle your remote phone controller.
6. Do not use your remote phone controller at temperatures under 32°F (0°C) or over 104°F (40°C).
7. Do not drop your remote phone controller, throw it, or subject it to strong impacts or physical trauma.
8. If you detect any abnormalities when using your remote phone controller, contact the manufacturer for support. In addition, do not continue to use your remote phone controller if you detect any smoke or fire.
9. Unplug your remote phone controller when not in use for extended periods of time.
10. When plugged in, do not place your remote phone controller on flammable materials such as rugs, carpets or bedding.
11. Please recycle or dispose of your remote phone controller properly based on the laws and rules of your municipality. Contact local recycling facilities and/or the manufacturer of for further information.
12. Clean your remote phone controller using a soft cloth or paper towel. Do not use harsh chemicals when cleaning your smartphone cage, and never submerge your smartphone cage in water.
13. Recycle or dispose of batteries properly based on your local laws and regulations.

## Warranty

This warranty covers the original consumer purchaser only and is not transferable.

This warranty covers products that fail to function properly UNDER NORMAL USAGE, due to defects in material or workmanship. Your product will be repaired or replaced at no charge for parts or labor for a period of one year.

### What Is Not Covered by Warranty

Damages or malfunctions not resulting from defects in material or workmanship and damages or malfunctions from other than normal use, including, but not limited to, repair by unauthorized parties, tampering, modification or accident.

### To Obtain Warranty Service and Troubleshooting Information:

Call 1-800-592-9541 or visit our website at [www.vivitar.com](http://www.vivitar.com).

To receive Warranty service along with the name and address of an authorized product service center, the original consumer purchaser must contact us for problem determination and service procedures. Proof of purchase in the form of a bill of sale or receipted invoice, evidencing that the product is within the applicable Warranty period(s), MUST be presented in order to obtain the requested service. It is your responsibility to properly package and send any defective products along with a dated copy of proof of purchase, a written explanation of the problem, and a valid return address to the authorized service center at your expense. Do not include any other items or accessories with the defective product. Any products received by the authorized service center that are not covered by warranty will be returned unrepai

## FCC Statement

Changes or modifications not expressly approved by the party responsible for compliance could void the user's authority to operate the equipment.

This device complies with Part 15 of the FCC Rules. Operation is subject to the following two conditions: (1) this device may not cause harmful interference, and (2) this device must accept any interference received, including interference that may cause undesired operation.

This equipment has been tested and found to comply with the limits for a Class B digital device, pursuant to Part 15 of the FCC Rules. These limits are designed to provide reasonable protection against harmful interference in a residential installation. This equipment generates, uses and can radiate radio frequency energy and, if not installed and used in accordance with the instructions, may cause harmful interference to radio communications. However, there is no guarantee that interference will not occur in a particular installation.

If this equipment does cause harmful interference to radio or television reception, which can be determined by turning the equipment off and on, the user is encouraged to try to correct the interference by one or more of the following measures:

- Reorient or relocate the receiving antenna.
- Increase the separation between the equipment and receiver.
- Connect the equipment into an outlet on a circuit different from that to which the receiver is connected.
- Consult the dealer or an experienced radio/TV technician for help.

# VIVITAR®

© 2024 Sakar International  
195 Carter Drive,  
Edison, NJ 08817  
Support: 800 592 9541  
[www.vivitar.com](http://www.vivitar.com)

### FCC Radiation Exposure Statement:

The device has been evaluated to meet general RF exposure requirement.

The device can be used in the portable exposure condition without restriction.