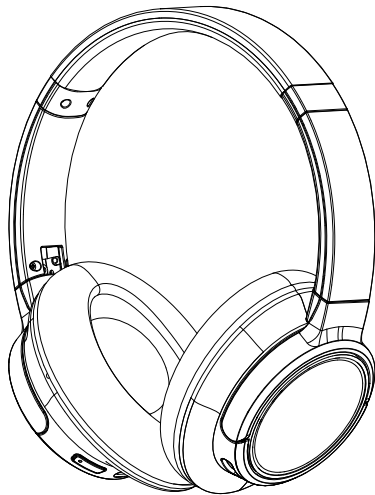


USER MANUAL

BH682F



Bluetooth Headphone

INTRODUCTION

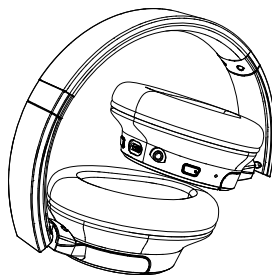
Dear customers,

Thank you for purchasing the high-quality Bluetooth headphone provided by CKS.

CKS devotes to providing the music lovers with live-like music experience. Bluetooth V5.0 Wireless technology provides stable signal transmission and interference-free.

You can enjoy high-fidelity music without holding your device.

COMPATIBLE WITH VARIOUS DEVICES



TECHNICAL SPECIFICATIONS

Bluetooth Version: V5.0	Sensitivity: 120dB
Driver Unit: 40mm	Battery Capacity: 380mAh
Distortion: ≤1%	Working Time: 20 Hours
Frequency Response: 20Hz~20KHz	Charge Time: 3 Hours
S/N Ratio: 80dB	Working Range: More than 10 Meters
Impedance: 24Ω	Line-in Plug: 3.5mm

FEATURES

Foldable Design

20 Hours Playtime

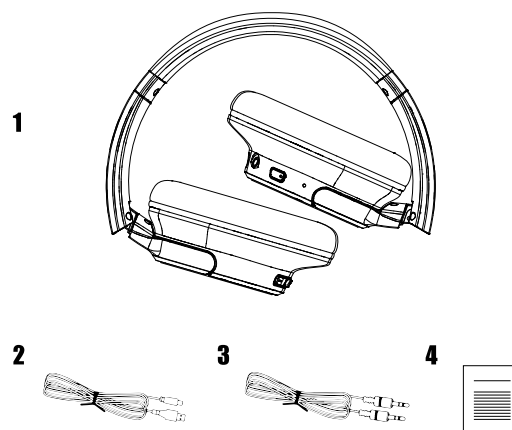
NFC Fast Pairing

Direct Line-in for 3.5mm

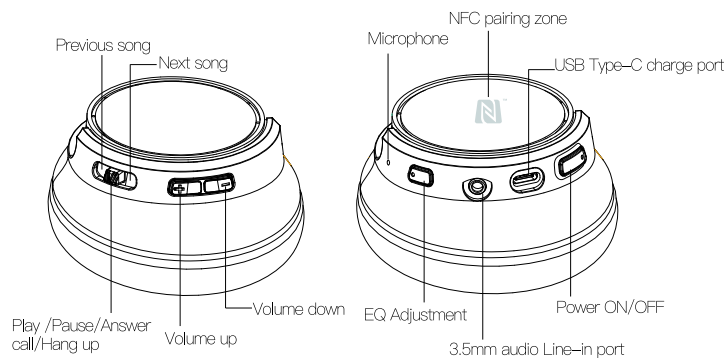
3 Selectable EQ Modes

PACKAGE CONTENTS

- ① Bluetooth Headphone ② USB Type-C Charge Cable ③ 3.5mm Audio Cable ④ User Manual



FUNCTION IDENTIFICATION




PAIRING AND OPERATION

Please charge the headphone more than 3 hours before first use. It will activate the best performance of the battery.

● POWER ON

Press and hold the POWER button  for 2 seconds until the Red LED lights up.

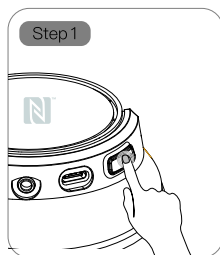
● POWER OFF

Press and hold the POWER button  for 2 seconds until the Red LED lights up then turn off. The headphone will automatically turn off the power without pairing any device more than 5 minutes.

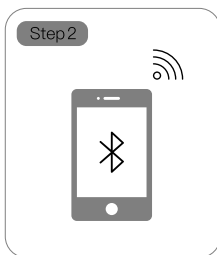
● PAIRING

1. Pairing new device

Pairing option ①: Bluetooth



Turn on headphone, after 10 seconds Red LED and Blue LED will blink alternately when searching for available device. Pairing duration is within 5 minutes.

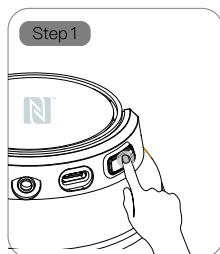


Turn on Bluetooth on your device, search the available device Cks1913 then connect it.

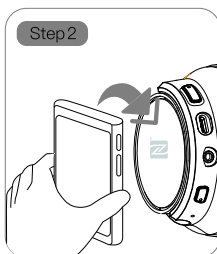


The blue LED will flash every 5 seconds once when successfully connected.

Pairing option ②: NFC



Turn on headphone, after 10 seconds Red LED and Blue LED will blink alternately when searching for available device. Pairing duration is within 5 minutes.



Turn on NFC of Smartphone and directly touch the NFC Pairing Zone on left side to connect.



The blue LED will flash every 5 seconds once when successfully connected.

2. Reconnect paired device

Turn on the headphone then it will automatically connect with the device (Bluetooth ON) that previously paired with. The blue LED will flash 2 times when reconnecting.

● PLAY/PAUSE

Press for 1 time.

● CALL

Receiving a call: Press to answer the call.

Releasing a call: Press to release the call.

Rejecting call: Press and hold for about 2 seconds.

● VOLUME UP/ DOWN

Press once to increase the volume by one grade. If the volume reaches the maximum, you can hear the buzz sound. Press once to decrease the volume by one grade. If the volume reaches the minimum, you can hear the buzz sound.

● SWITCH SONG

Push towards to switch to previous song. Push towards to switch to next song.

● LAST NUMBER REDIALING

Press and hold for 2 seconds to redial the last number.

You can press again to cancel the redialing.

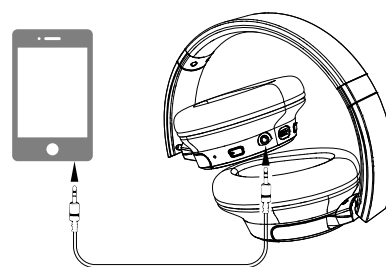
● CHARGE THE BATTERY

Please turn off the headphone before charging. Use the USB Type-C cable provided to connect headphone to the electric power source. POWER LED is in solid Red when charging. Headphone will be fully charged in 3 hours and Red LED will turn OFF.

Voice prompt keep playing when the battery is too low, please charge as soon as possible.

● LINE-IN

Turn on the headphone, then it can be directly line-in linked to the audio device by 3.5mm cable. In line-in mode, only 'EQ' 'Play/Pause' 'Volume' function is available.



EQ ADJUSTMENT

Turn ON the headphone, press EQ to switch different adjustment mode

- ① Default mode (Green LED OFF & 'DO'(long) 1 time)
- ② POP mode (Green LED ON & 'DO'(short) 1 time)
- ③ ROCK mode (Green LED ON & 'DO'(short) 2 times)
- ④ CLASSICAL mode (Green LED ON & 'DO'(short) 3 times)

EQ mode of last time setting will automatically resume when turn on the headphone.

LED INDICATOR

💡 LED Status	🎧 Headphone Status
POWER Blue LED flash 2 times	Reconnect paired device
POWER Red LED and Blue LED blink alternately	Pairing
POWER Blue LED flashes once in 5 seconds	Connected
POWER LED in solid Red	Charging
POWER Red LED turn OFF	Fully Charged /Power OFF
POWER Red LED flashes	Low Battery
EQ LED in solid Green	EQ (POP/ROCK/CLASSICAL)
EQ Green LED turn OFF	Default EQ

CAUTION

To protect your hearing, please do not use the headphone at high volume for a long time.

Wireless transmission will produce electromagnetic signal which may interfere the heart pacemaker or other medical instruments properly function. Please follow doctor's instruction.

- To extend the service life of the battery, you are advised to charge the headphone at least once a month.
- Please use the appropriate cable provided by CKS for charge.
- Adjust the volume to a suitable degree when using the headphone.
- DO NOT wear the headphone when sleeping; otherwise, the headphone may be damaged or cause damage to you.
- DO NOT use the headphone when driving or riding bicycle.

FCC STATEMENT

This device complies with Part 15 of the FCC Rules. Operation is subject to the following two conditions: (1) This device may not cause harmful interference, and (2) this device must accept any interference received, including interference that may cause undesired operation.

NOTE: This equipment has been tested and found to comply with the limits for a Class B digital device, pursuant to Part 15 of the FCC Rules. These limits are designed to provide reasonable protection against harmful interference in a residential installation. This equipment generates uses and can radiate radio frequency energy and, if not installed and used in accordance with the instructions, may cause harmful interference to radio communications. However, there is no guarantee that interference will not occur in a particular installation. If this equipment does cause harmful interference to radio or television reception, which can be determined by turning the equipment off and on, the user is encouraged to try to correct the interference by one of the following measures:

- Reorient or relocate the receiving antenna.
- Increase the separation between the equipment and receiver.
- Connect the equipment into an outlet on a circuit different from that to which the receiver is connected.
- Consult the dealer or an experienced radio/TV technician for help.

WARNING: Any changes or modifications not expressly approved by the party responsible for compliance could void the user's authority to operate this equipment.

The device must not be co-located or operating in conjunction with any other antenna or transmitter.

This device complies with FCC's radiation exposure limits set forth for an uncontrolled environment.