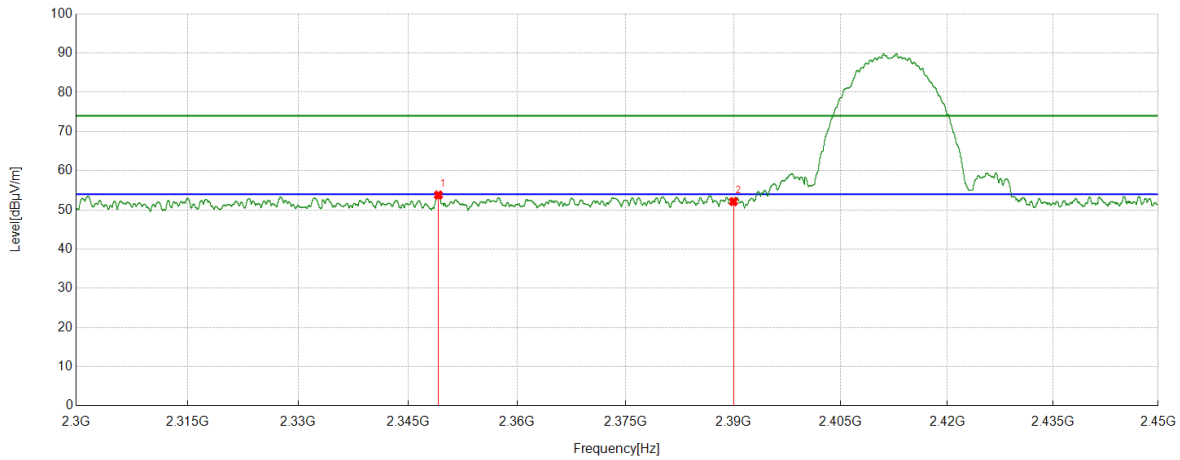


Test Graphs:

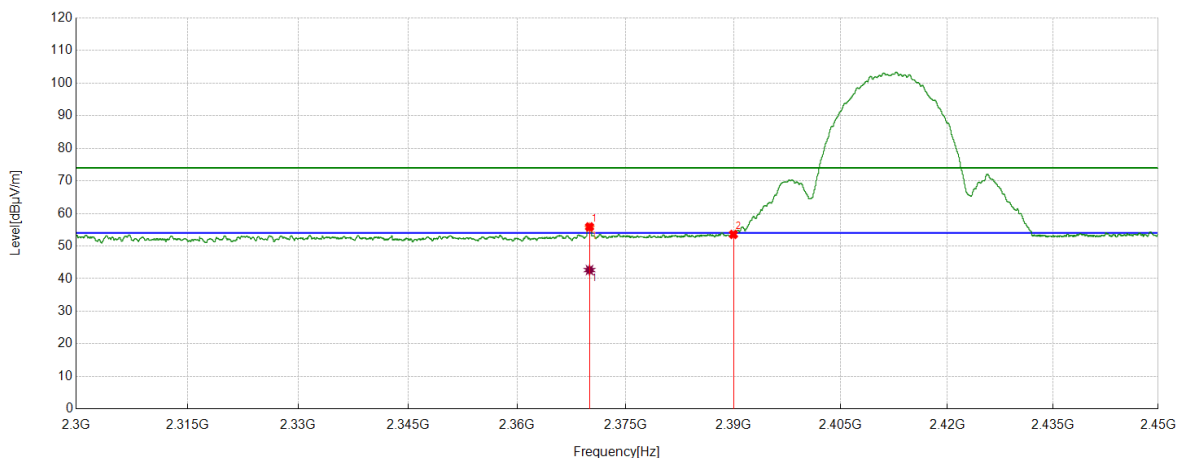
Test Mode	Channel	Polarization	Verdict
11B	LCH	Horizontal	PASS



No.	Frequency	Reading Level	Correct Factor	Result	Limit	Margin	Remark
	(MHz)	(dBuV)	(dB/m)	(dBuV/m)	(dBuV/m)	(dB)	
1	2349.1874	43.88	9.91	53.79	74.00	20.21	peak
2	2390.0000	41.78	10.35	52.13	74.00	21.87	peak

- Note: 1. If Peak Result complies with AV limit, AV Result is deemed to comply with AV limit.
2. Test setup: RBW: 1 MHz, VBW: 3 MHz, Sweep time: auto.
3. Measurement = Reading Level + Correct Factor.
4. Only the worst case emission was recorded, if it complies with the limit, the other emissions deemed to comply with the limit.

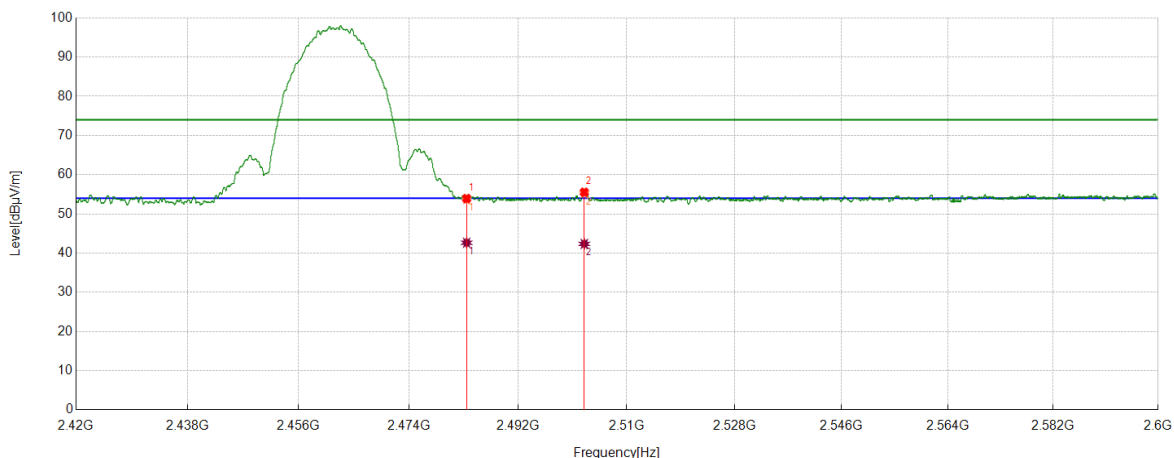
Test Mode	Channel	Polarization	Verdict
11B	LCH	Vertical	PASS



No.	Frequency	Reading Level	Correct Factor	Result	Limit	Margin	Remark
	(MHz)	(dBuV)	(dB/m)	(dBuV/m)	(dBuV/m)	(dB)	
1	2370.0025	45.77	10.12	55.89	74.00	18.11	peak
		32.52	10.12	42.64	54.00	11.36	average
2	2390.0000	43.23	10.35	53.58	74.00	20.42	peak

- Note: 1. If Peak Result complies with AV limit, AV Result is deemed to comply with AV limit.
2. Test setup: RBW: 1 MHz, VBW: 3 MHz, Sweep time: auto.
3. Measurement = Reading Level + Correct Factor.
4. Only the worst case emission was recorded, if it complies with the limit, the other emissions deemed to comply with the limit.

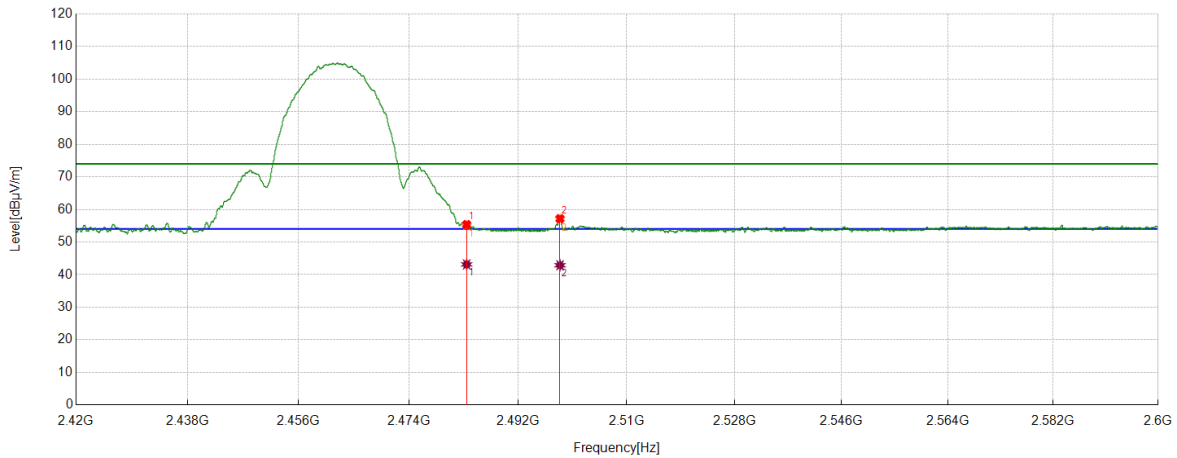
Test Mode	Channel	Polarization	Verdict
11B	HCH	Horizontal	PASS



No.	Frequency	Reading Level	Correct Factor	Result	Limit	Margin	Remark
	(MHz)	(dBuV)	(dB/m)	(dBuV/m)	(dBuV/m)	(dB)	
1	2483.5000	43.28	10.64	53.92	74.00	20.08	peak
		32.00	10.64	42.64	54.00	11.36	average
2	2502.9454	44.70	10.84	55.54	74.00	18.46	peak
		31.51	10.84	42.35	54.00	11.65	average

- Note: 1. If Peak Result complies with AV limit, AV Result is deemed to comply with AV limit.
2. Test setup: RBW: 1 MHz, VBW: 3 MHz, Sweep time: auto.
3. Measurement = Reading Level + Correct Factor.
4. Only the worst case emission was recorded, if it complies with the limit, the other emissions deemed to comply with the limit.

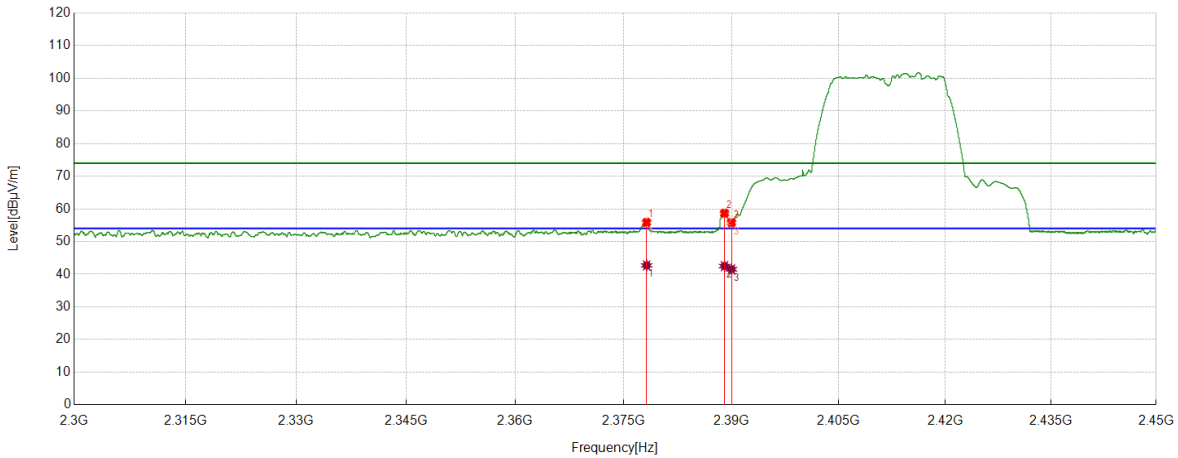
Test Mode	Channel	Polarization	Verdict
11B	HCH	Vertical	PASS



No.	Frequency	Reading Level	Correct Factor	Result	Limit	Margin	Remark
	(MHz)	(dBuV)	(dB/m)	(dBuV/m)	(dBuV/m)	(dB)	
1	2483.5000	44.73	10.64	55.37	74.00	18.63	peak
		32.50	10.64	43.14	54.00	10.86	average
2	2498.9174	46.44	10.73	57.17	74.00	16.83	peak
		32.16	10.73	42.89	54.00	11.11	average

- Note: 1. If Peak Result complies with AV limit, AV Result is deemed to comply with AV limit.
2. Test setup: RBW: 1 MHz, VBW: 3 MHz, Sweep time: auto.
3. Measurement = Reading Level + Correct Factor.
4. Only the worst case emission was recorded, if it complies with the limit, the other emissions deemed to comply with the limit.

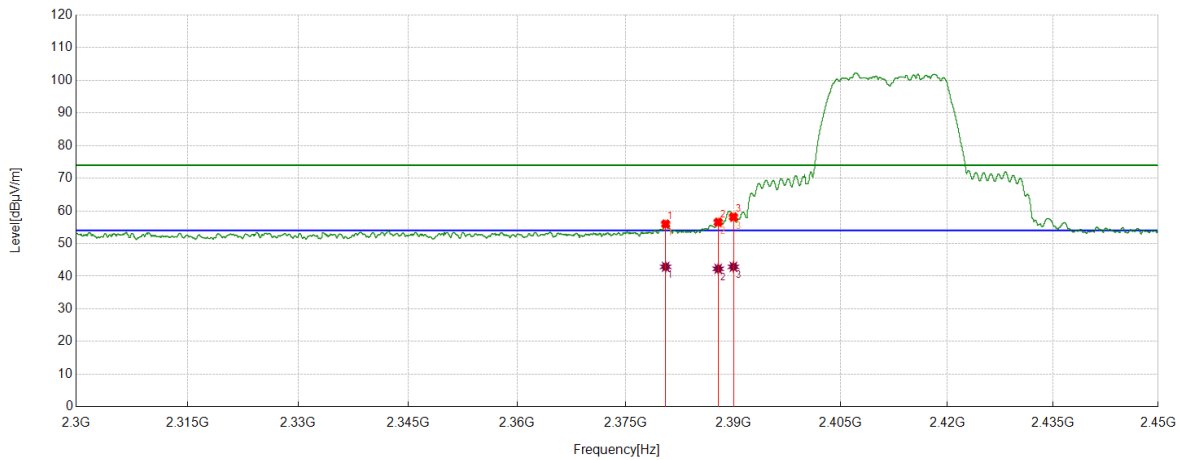
Test Mode	Channel	Polarization	Verdict
11G	LCH	Horizontal	PASS



No.	Frequency	Reading Level	Correct Factor	Result	Limit	Margin	Remark
	(MHz)	(dBuV)	(dB/m)	(dBuV/m)	(dBuV/m)	(dB)	
1	2378.1973	45.61	10.26	55.87	74.00	18.13	peak
		32.44	10.26	42.70	54.00	11.30	average
2	2389.0361	48.35	10.34	58.69	74.00	15.31	peak
		32.15	10.34	42.49	54.00	11.51	average
3	2390.0000	45.46	10.35	55.81	74.00	18.19	peak
		31.17	10.35	41.52	54.00	12.48	average

Note: 1. If Peak Result complies with AV limit, AV Result is deemed to comply with AV limit.
2. Test setup: RBW: 1 MHz, VBW: 3 MHz, Sweep time: auto.
3. Measurement = Reading Level + Correct Factor.
4. Only the worst case emission was recorded, if it complies with the limit, the other emissions deemed to comply with the limit.

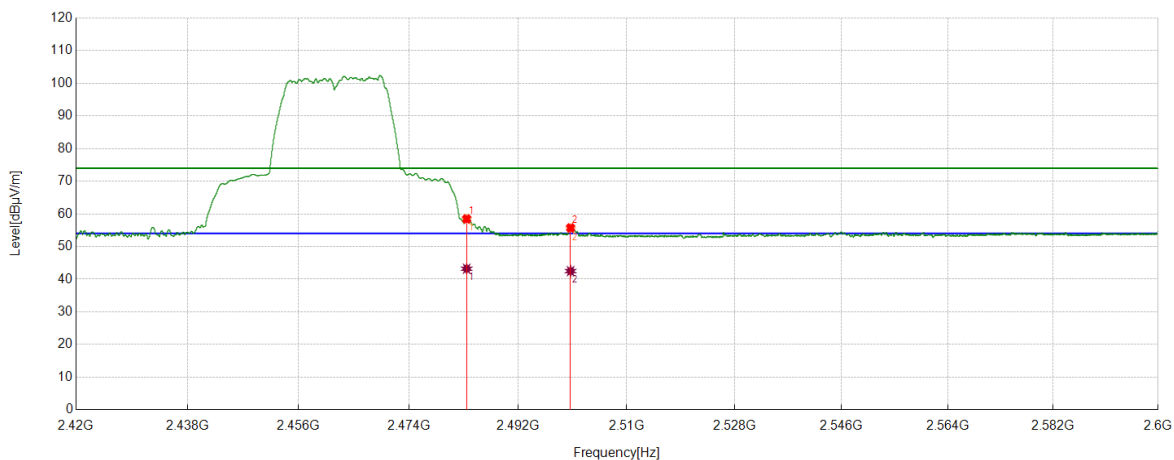
Test Mode	Channel	Polarization	Verdict
11G	LCH	Vertical	PASS



No.	Frequency	Reading Level	Correct Factor	Result	Limit	Margin	Remark
	(MHz)	(dBuV)	(dB/m)	(dBuV/m)	(dBuV/m)	(dB)	
1	2380.5601	45.68	10.30	55.98	74.00	18.02	peak
		32.58	10.30	42.88	54.00	11.12	average
2	2387.8735	46.21	10.34	56.55	74.00	17.45	peak
		31.93	10.34	42.27	54.00	11.73	average
3	2390.0000	47.80	10.35	58.15	74.00	15.85	peak
		32.53	10.35	42.88	54.00	11.12	average

- Note: 1. If Peak Result complies with AV limit, AV Result is deemed to comply with AV limit.
2. Test setup: RBW: 1 MHz, VBW: 3 MHz, Sweep time: auto.
3. Measurement = Reading Level + Correct Factor.
4. Only the worst case emission was recorded, if it complies with the limit, the other emissions deemed to comply with the limit.

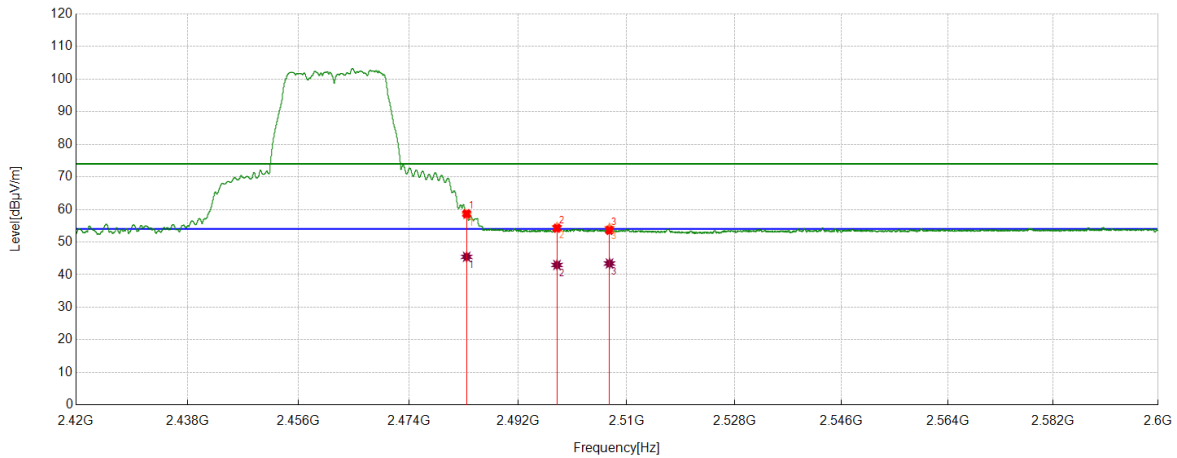
Test Mode	Channel	Polarization	Verdict
11G	HCH	Horizontal	PASS



No.	Frequency	Reading Level	Correct Factor	Result	Limit	Margin	Remark
	(MHz)	(dBuV)	(dB/m)	(dBuV/m)	(dBuV/m)	(dB)	
1	2483.5000	47.83	10.64	58.47	74.00	15.53	peak
		32.57	10.64	43.21	54.00	10.79	average
2	2500.6726	44.97	10.75	55.72	74.00	18.28	peak
		31.74	10.75	42.49	54.00	11.51	average

- Note: 1. If Peak Result complies with AV limit, AV Result is deemed to comply with AV limit.
2. Test setup: RBW: 1 MHz, VBW: 3 MHz, Sweep time: auto.
3. Measurement = Reading Level + Correct Factor.
4. Only the worst case emission was recorded, if it complies with the limit, the other emissions deemed to comply with the limit.

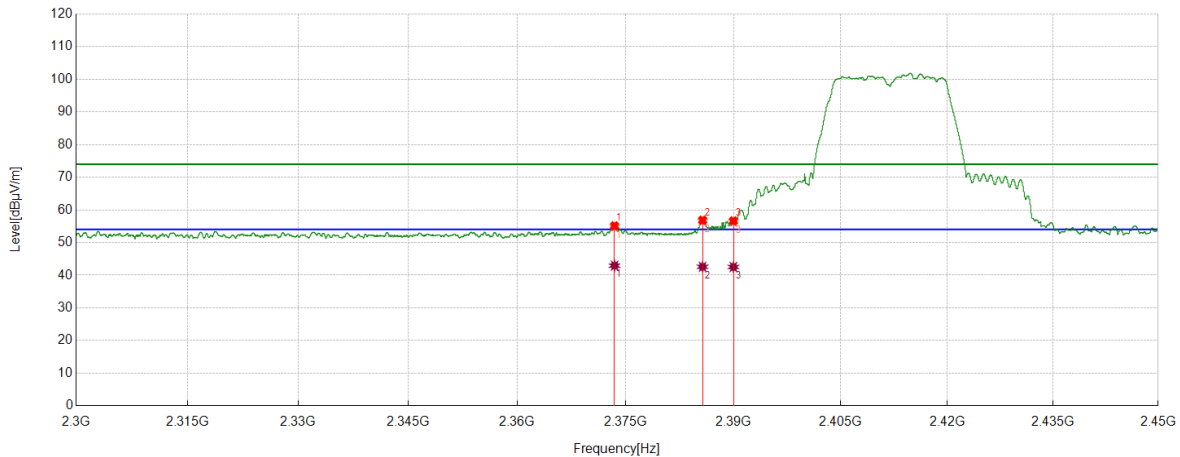
Test Mode	Channel	Polarization	Verdict
11G	HCH	Vertical	PASS



No.	Frequency	Reading Level	Correct Factor	Result	Limit	Margin	Remark
	(MHz)	(dBuV)	(dB/m)	(dBuV/m)	(dBuV/m)	(dB)	
1	2483.5000	48.05	10.64	58.69	74.00	15.31	peak
		34.83	10.64	45.47	54.00	8.53	average
2	2498.4223	43.50	10.74	54.24	74.00	19.26	peak
		32.23	10.74	42.97	54.00	11.03	average
3	2507.1309	42.61	10.99	53.60	74.00	19.40	peak
		32.44	10.99	43.43	54.00	10.57	average

- Note: 1. If Peak Result complies with AV limit, AV Result is deemed to comply with AV limit.
2. Test setup: RBW: 1 MHz, VBW: 3 MHz, Sweep time: auto.
3. Measurement = Reading Level + Correct Factor.
4. Only the worst case emission was recorded, if it complies with the limit, the other emissions deemed to comply with the limit.

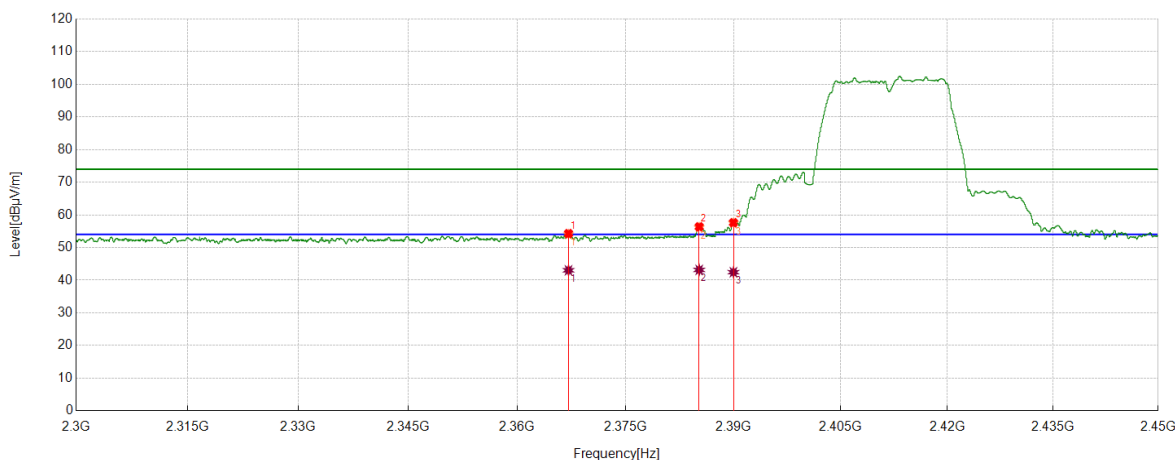
Test Mode	Channel	Polarization	Verdict
11N HT20	LCH	Horizontal	PASS



No.	Frequency	Reading Level	Correct Factor	Result	Limit	Margin	Remark
	(MHz)	(dBuV)	(dB/m)	(dBuV/m)	(dBuV/m)	(dB)	
1	2373.4717	44.92	10.18	55.10	74.00	18.90	peak
		32.75	10.18	42.93	54.00	11.07	average
2	2385.6982	46.51	10.33	56.84	74.00	17.16	peak
		32.25	10.33	42.58	54.00	11.42	average
3	2390.0000	46.27	10.35	56.62	74.00	17.38	peak
		32.17	10.35	42.52	54.00	11.48	average

- Note: 1. If Peak Result complies with AV limit, AV Result is deemed to comply with AV limit.
2. Test setup: RBW: 1 MHz, VBW: 3 MHz, Sweep time: auto.
3. Measurement = Reading Level + Correct Factor.
4. Only the worst case emission was recorded, if it complies with the limit, the other emissions deemed to comply with the limit.

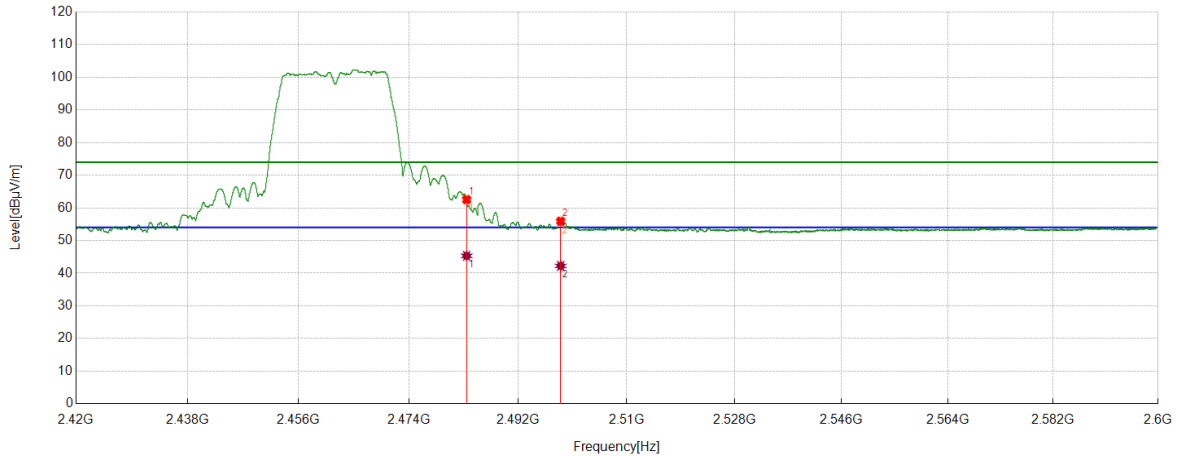
Test Mode	Channel	Polarization	Verdict
11N HT20	LCH	Vertical	PASS



No.	Frequency	Reading Level	Correct Factor	Result	Limit	Margin	Remark
	(MHz)	(dBuV)	(dB/m)	(dBuV/m)	(dBuV/m)	(dB)	
1	2367.0959	44.23	10.06	54.29	74.00	19.71	peak
		32.98	10.06	43.04	54.00	10.96	average
2	2385.2294	46.04	10.33	56.37	74.00	17.63	peak
		32.83	10.33	43.16	54.00	10.84	average
3	2390.0000	47.27	10.35	57.62	74.00	16.38	peak
		32.10	10.35	42.45	54.00	11.55	average

Note: 1. If Peak Result complies with AV limit, AV Result is deemed to comply with AV limit.
2. Test setup: RBW: 1 MHz, VBW: 3 MHz, Sweep time: auto.
3. Measurement = Reading Level + Correct Factor.
4. Only the worst case emission was recorded, if it complies with the limit, the other emissions deemed to comply with the limit.

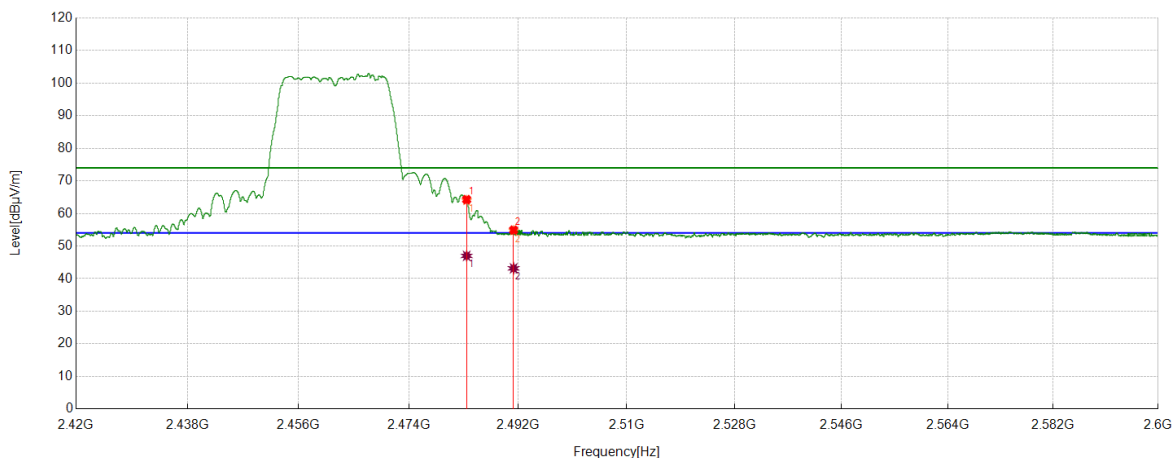
Test Mode	Channel	Polarization	Verdict
11N HT20	HCH	Horizontal	PASS



No.	Frequency	Reading Level	Correct Factor	Result	Limit	Margin	Remark
	(MHz)	(dBuV)	(dB/m)	(dBuV/m)	(dBuV/m)	(dB)	
1	2483.5000	51.91	10.64	62.55	74.00	11.45	peak
		34.68	10.64	45.32	54.00	8.68	average
2	2499.0299	45.20	10.73	55.93	74.00	17.57	peak
		31.51	10.73	42.24	54.00	11.76	average

- Note: 1. If Peak Result complies with AV limit, AV Result is deemed to comply with AV limit.
2. Test setup: RBW: 1 MHz, VBW: 3 MHz, Sweep time: auto.
3. Measurement = Reading Level + Correct Factor.
4. Only the worst case emission was recorded, if it complies with the limit, the other emissions deemed to comply with the limit.

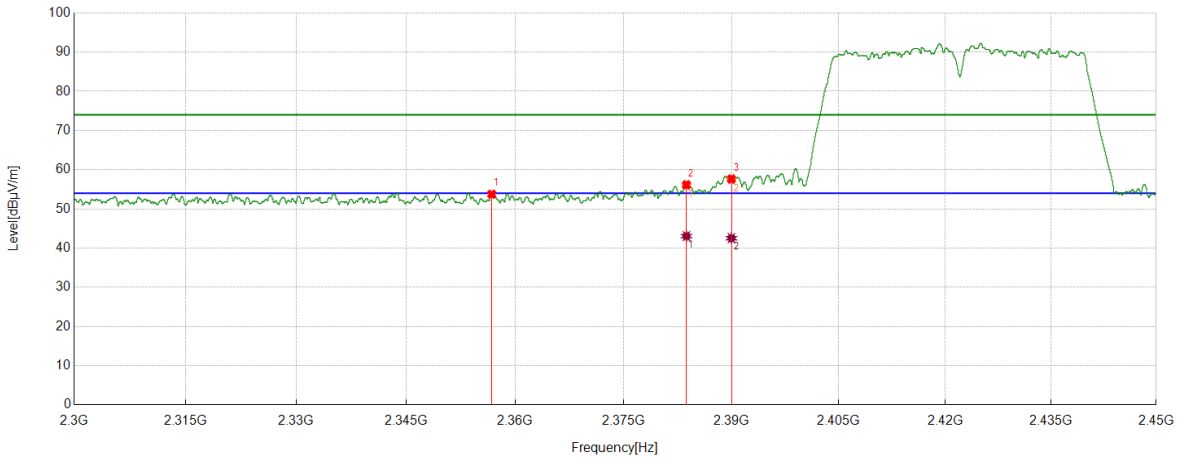
Test Mode	Channel	Polarization	Verdict
11N HT20	HCH	Vertical	PASS



No.	Frequency	Reading Level	Correct Factor	Result	Limit	Margin	Remark
	(MHz)	(dBuV)	(dB/m)	(dBuV/m)	(dBuV/m)	(dB)	
1	2483.5000	53.62	10.64	64.26	74.00	9.74	peak
		36.35	10.64	46.99	54.00	7.01	average
2	2491.2439	44.11	10.79	54.90	74.00	19.10	peak
		32.37	10.79	43.16	54.00	10.84	average

Note: 1. If Peak Result complies with AV limit, AV Result is deemed to comply with AV limit.
2. Test setup: RBW: 1 MHz, VBW: 3 MHz, Sweep time: auto.
3. Measurement = Reading Level + Correct Factor.
4. Only the worst case emission was recorded, if it complies with the limit, the other emissions deemed to comply with the limit.

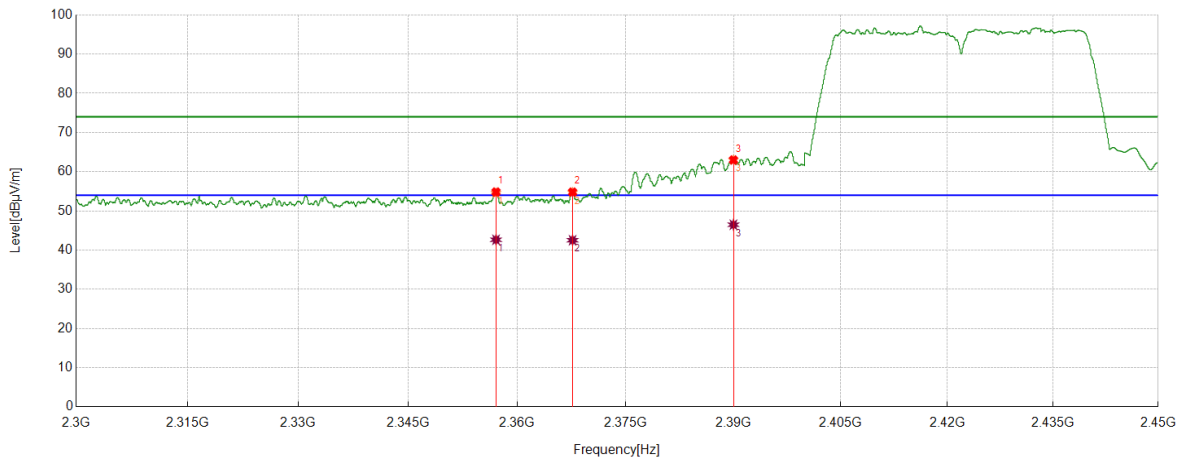
Test Mode	Channel	Polarization	Verdict
11N HT40	LCH	Horizontal	PASS



No.	Frequency	Reading Level	Correct Factor	Result	Limit	Margin	Remark
	(MHz)	(dBuV)	(dB/m)	(dBuV/m)	(dBuV/m)	(dB)	
1	2356.7821	43.84	9.91	53.75	74.00	20.25	peak
2	2383.7292	45.84	10.32	56.16	74.00	17.84	peak
		32.73	10.32	43.05	54.00	10.95	average
3	2390.0000	47.29	10.35	57.64	74.00	16.36	peak
		32.18	10.35	42.53	54.00	11.47	average

- Note: 1. If Peak Result complies with AV limit, AV Result is deemed to comply with AV limit.
2. Test setup: RBW: 1 MHz, VBW: 3 MHz, Sweep time: auto.
3. Measurement = Reading Level + Correct Factor.
4. Only the worst case emission was recorded, if it complies with the limit, the other emissions deemed to comply with the limit.

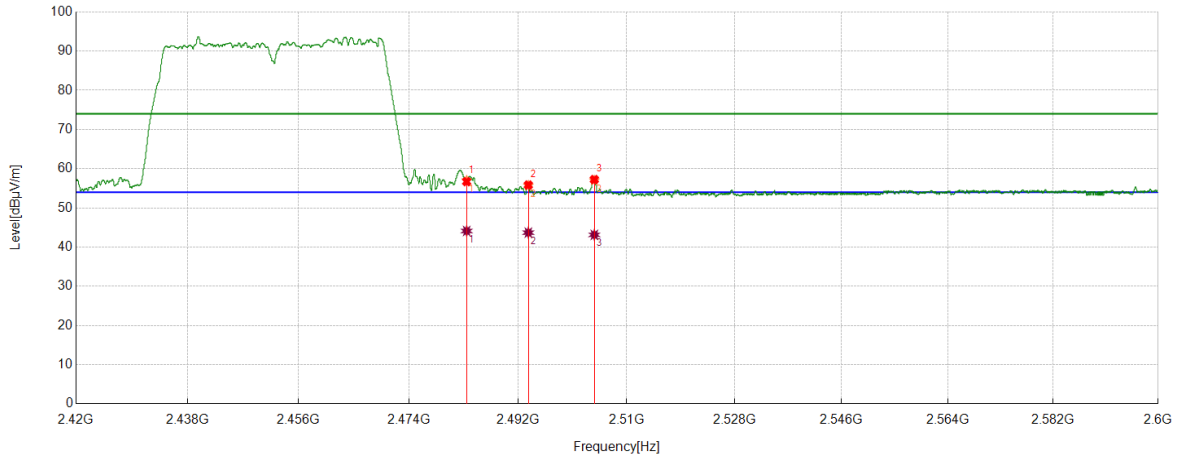
Test Mode	Channel	Polarization	Verdict
11N HT40	LCH	Vertical	PASS



No.	Frequency	Reading Level	Correct Factor	Result	Limit	Margin	Remark
	(MHz)	(dBuV)	(dB/m)	(dBuV/m)	(dBuV/m)	(dB)	
1	2357.1009	44.91	9.91	54.82	74.00	19.18	peak
		32.73	9.91	42.64	54.00	11.36	average
2	2367.6585	44.73	10.06	54.79	74.00	19.21	peak
		32.46	10.06	42.52	54.00	11.48	average
3	2390.0000	52.64	10.35	62.99	74.00	11.01	peak
		36.12	10.35	46.47	54.00	7.53	average

Note: 1. If Peak Result complies with AV limit, AV Result is deemed to comply with AV limit.
2. Test setup: RBW: 1 MHz, VBW: 3 MHz, Sweep time: auto.
3. Measurement = Reading Level + Correct Factor.
4. Only the worst case emission was recorded, if it complies with the limit, the other emissions deemed to comply with the limit.

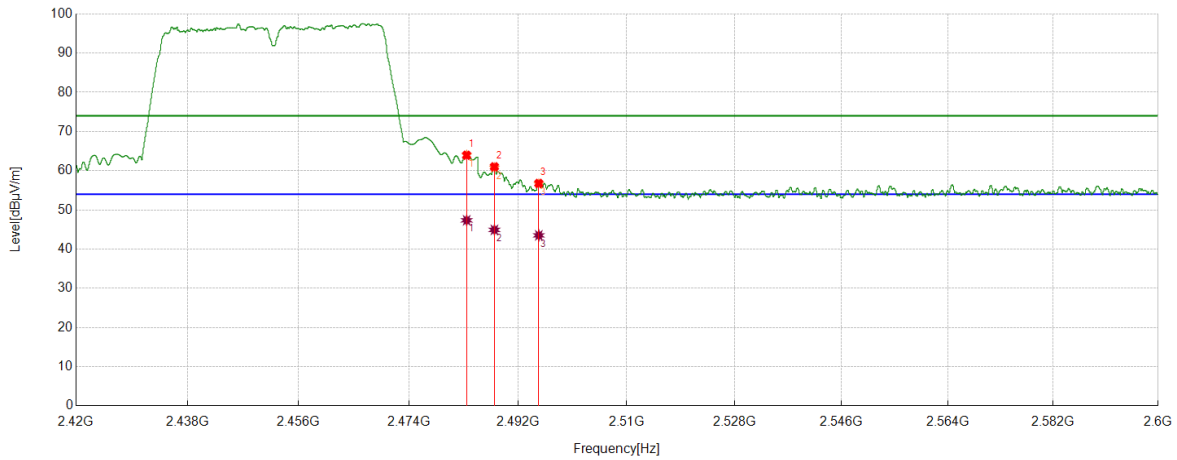
Test Mode	Channel	Polarization	Verdict
11N HT40	HCH	Horizontal	PASS



No.	Frequency	Reading Level	Correct Factor	Result	Limit	Margin	Remark
	(MHz)	(dBuV)	(dB/m)	(dBuV/m)	(dBuV/m)	(dB)	
1	2483.5000	46.06	10.64	56.70	74.00	17.30	peak
		33.47	10.64	44.11	54.00	9.89	average
2	2493.6742	45.06	10.77	55.83	74.00	18.17	peak
		32.92	10.77	43.69	54.00	10.31	average
3	2504.6106	46.33	10.90	57.23	74.00	16.77	peak
		32.22	10.90	43.12	54.00	10.88	average

- Note: 1. If Peak Result complies with AV limit, AV Result is deemed to comply with AV limit.
2. Test setup: RBW: 1 MHz, VBW: 3 MHz, Sweep time: auto.
3. Measurement = Reading Level + Correct Factor.
4. Only the worst case emission was recorded, if it complies with the limit, the other emissions deemed to comply with the limit.

Test Mode	Channel	Polarization	Verdict
11N HT40	HCH	Vertical	PASS



No.	Frequency	Reading Level	Correct Factor	Result	Limit	Margin	Remark
	(MHz)	(dBuV)	(dB/m)	(dBuV/m)	(dBuV/m)	(dB)	
1	2483.5000	53.30	10.64	63.94	74.00	10.06	peak
		36.70	10.64	47.34	54.00	6.66	average
2	2488.071	50.25	10.75	61.00	74.00	13.00	peak
		34.15	10.75	44.90	54.00	9.10	average
3	2495.4069	46.00	10.76	56.76	74.00	17.24	peak
		32.74	10.76	43.50	54.00	10.50	average

- Note: 1. If Peak Result complies with AV limit, AV Result is deemed to comply with AV limit.
2. Test setup: RBW: 1 MHz, VBW: 3 MHz, Sweep time: auto.
3. Measurement = Reading Level + Correct Factor.
4. Only the worst case emission was recorded, if it complies with the limit, the other emissions deemed to comply with the limit.

7.7.3.SPURIOUS EMISSIONS

Test Result Table:

1) For 1GHz~3GHz

Environment Parameter	Selected Values During Tests
Relative Humidity	55.9%
Atmospheric Pressure:	102.5kPa
Temperature	21.2°C

Test Mode	Channel	Puw(dBm)	Verdict
11B SISO	LCH	<Limit	PASS
	MCH	<Limit	PASS
	HCH	<Limit	PASS
11G SISO	LCH	<Limit	PASS
	MCH	<Limit	PASS
	HCH	<Limit	PASS
11N HT20	LCH	<Limit	PASS
	MCH	<Limit	PASS
	HCH	<Limit	PASS
11N HT40	LCH	<Limit	PASS
	MCH	<Limit	PASS
	HCH	<Limit	PASS

2) For 3GHz~18GHz

Environment Parameter	Selected Values During Tests
Relative Humidity	55.9%
Atmospheric Pressure:	102.5kPa
Temperature	21.2°C

Test Mode	Channel	Puw(dBm)	Verdict
11B SISO	LCH	<Limit	PASS
	MCH	<Limit	PASS
	HCH	<Limit	PASS
11G SISO	LCH	<Limit	PASS
	MCH	<Limit	PASS
	HCH	<Limit	PASS
11N HT20	LCH	<Limit	PASS
	MCH	<Limit	PASS
	HCH	<Limit	PASS
11N HT40	LCH	<Limit	PASS
	MCH	<Limit	PASS
	HCH	<Limit	PASS

Form-ULID-008536-9 V2.0

UL-CCIC COMPANY LIMITED

This report shall not be reproduced except in full, without the written approval of UL-CCIC COMPANY LIMITED.

3) For 18GHz~26.5GHz

Environment Parameter	Selected Values During Tests
Relative Humidity	55.9%
Atmospheric Pressure:	102.5kPa
Temperature	21.2°C

Test Mode	Channel	Puw(dBm)	Verdict
11B	MCH	<Limit	PASS

Remark:

1) Through pre-testing all the test modes and test channels, but only the data of the worst case is included in this test report.

4) For 30MHz~1GHz

Environment Parameter	Selected Values During Tests
Relative Humidity	48.4%
Atmospheric Pressure:	102.4kPa
Temperature	22.4°C

Test Mode	Channel	Puw(dBm)	Verdict
11B	MCH	<Limit	PASS

Remark:

1) Through pre-testing all the test modes and test channels, but only the data of the worst case is included in this test report.

5) For 9KHz~30MHz

Environment Parameter	Selected Values During Tests
Relative Humidity	48.4%
Atmospheric Pressure:	102.4kPa
Temperature	22.4°C

Test Mode	Channel	Puw(dBm)	Verdict
11B	MCH	<Limit	PASS

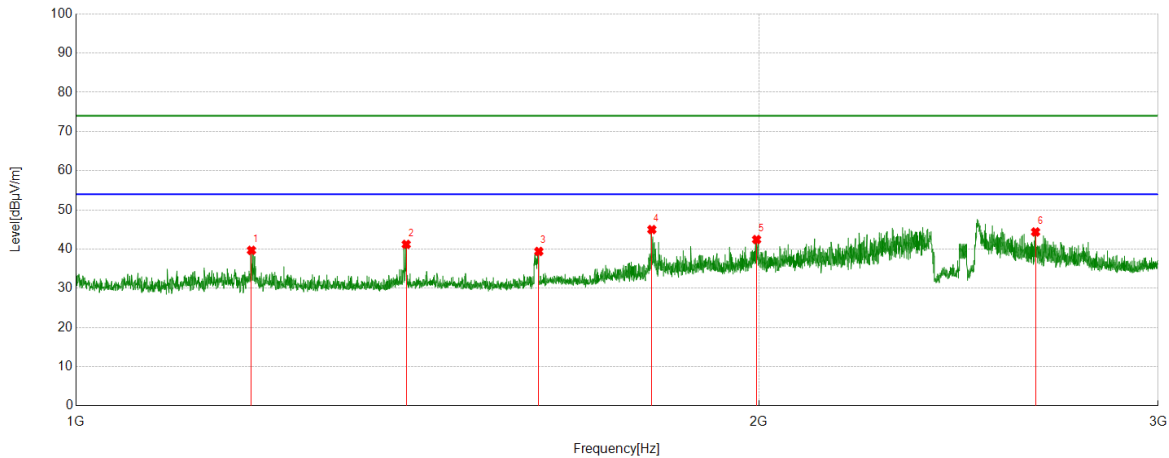
Remark:

1) Through pre-testing all the test modes and test channels, but only the data of the worst case is included in this test report.

Part I: 1GHz~3GHz

HARMONICS AND SPURIOUS EMISSIONS

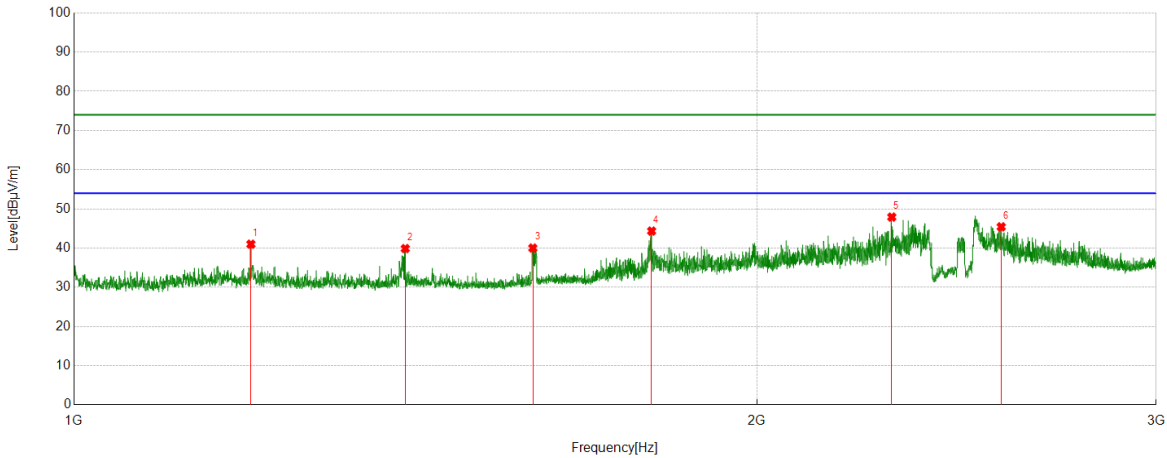
Test Mode	Channel	Polarization	Verdict
11B	LCH	Horizontal	PASS



No.	Frequency	Reading Level	Correct Factor	Result	Limit	Margin	Remark
	(MHz)	(dBuV)	(dB/m)	(dBuV/m)	(dBuV/m)	(dB)	
1	1195.0244	61.62	-21.94	39.68	74.00	34.32	peak
2	1398.2998	61.67	-20.47	41.20	74.00	32.80	peak
3	1599.825	58.11	-18.71	39.40	74.00	34.60	peak
4	1794.3493	62.80	-17.82	44.98	74.00	29.02	peak
5	1995.6245	58.74	-16.31	42.43	74.00	31.57	peak
6	2648.9561	57.60	-13.23	44.37	74.00	29.63	peak

- Note: 1. Measurement = Reading Level + Correct Factor.
2. If Peak Result complies with AV limit, AV Result is deemed to comply with AV limit.
3. Test setup: RBW: 1 MHz, VBW: 3 MHz, Sweep time: auto.
4. Peak: Peak detector.
5. AVG: VBW refer to section 7.2.
6. For below 3GHz part, filter losses were only considered in the spurious frequency bands and the authorized band was not corrected for Band Reject Filter losses
The proper operation of the transmitter prior to adding the filter to the measurement chain.
7. Only the worst case emission was recorded, if it complies with the limit, the other emissions deemed to comply with the limit.

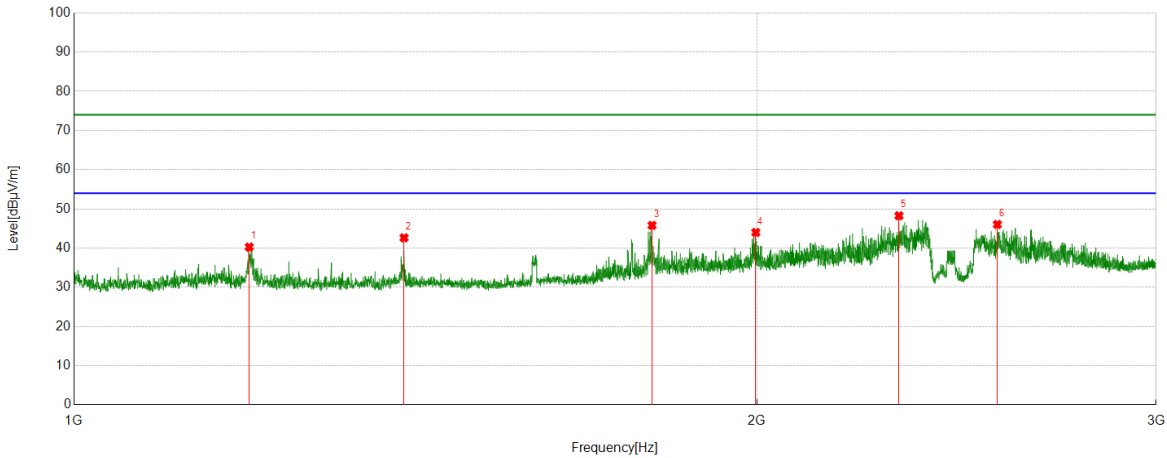
Test Mode	Channel	Polarization	Verdict
11B	LCH	Vertical	PASS



No.	Frequency	Reading Level	Correct Factor	Result	Limit	Margin	Remark
	(MHz)	(dBuV)	(dB/m)	(dBuV/m)	(dBuV/m)	(dB)	
1	1196.7746	62.95	-21.95	41.00	74.00	33.00	peak
2	1399.8000	60.33	-20.45	39.88	74.00	34.12	peak
3	1593.3242	58.72	-18.71	40.01	74.00	33.99	peak
4	1797.5997	62.08	-17.74	44.34	74.00	29.66	peak
5	2293.9117	63.20	-15.29	47.91	74.00	26.09	peak
6	2563.4454	59.08	-13.66	45.42	74.00	28.58	peak

- Note: 1. Measurement = Reading Level + Correct Factor.
2. If Peak Result complies with AV limit, AV Result is deemed to comply with AV limit.
3. Test setup: RBW: 1 MHz, VBW: 3 MHz, Sweep time: auto.
4. Peak: Peak detector.
5. AVG: VBW refer to section 7.2.
6. For below 3GHz part, filter losses were only considered in the spurious frequency bands and the authorized band was not corrected for Band Reject Filter losses
The proper operation of the transmitter prior to adding the filter to the measurement chain.
7. Only the worst case emission was recorded, if it complies with the limit, the other emissions deemed to comply with the limit.

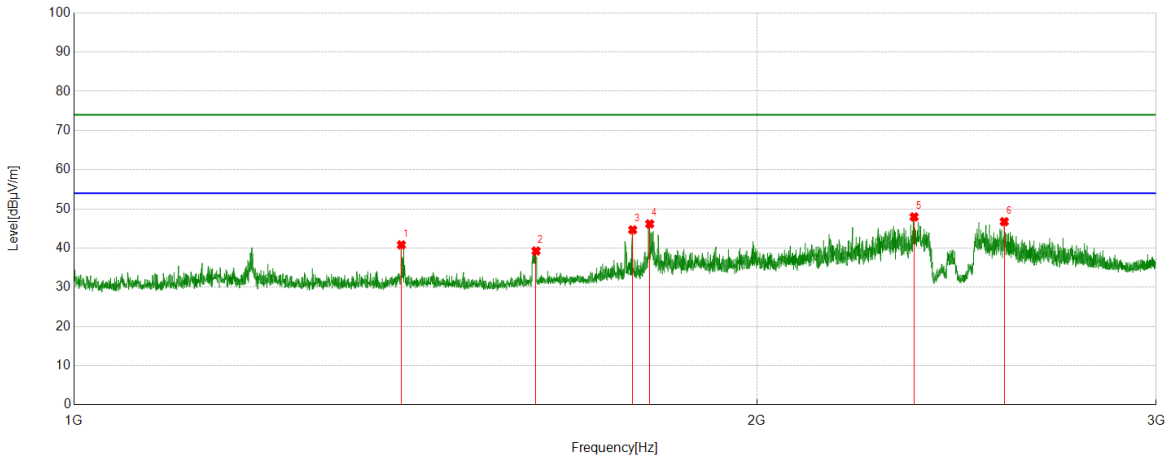
Test Mode	Channel	Polarization	Verdict
11B	MCH	Horizontal	PASS



No.	Frequency (MHz)	Reading Level (dBuV)	Correct Factor (dB/m)	Result (dBuV/m)	Limit (dBuV/m)	Margin (dB)	Remark
1	1194.7743	62.20	-21.93	40.27	74.00	33.73	peak
2	1398.0498	63.10	-20.48	42.62	74.00	31.38	peak
3	1798.3498	63.53	-17.72	45.81	74.00	28.19	peak
4	1998.1248	60.29	-16.29	44.00	74.00	30.00	peak
5	2310.6638	63.76	-15.51	48.25	74.00	25.75	peak
6	2553.4442	59.83	-13.80	46.03	74.00	27.97	peak

- Note: 1. Measurement = Reading Level + Correct Factor.
2. If Peak Result complies with AV limit, AV Result is deemed to comply with AV limit.
3. Test setup: RBW: 1 MHz, VBW: 3 MHz, Sweep time: auto.
4. Peak: Peak detector.
5. AVG: VBW refer to section 7.2.
6. For below 3GHz part, filter losses were only considered in the spurious frequency bands and the authorized band was not corrected for Band Reject Filter losses
The proper operation of the transmitter prior to adding the filter to the measurement chain.
7. Only the worst case emission was recorded, if it complies with the limit, the other emissions deemed to comply with the limit.

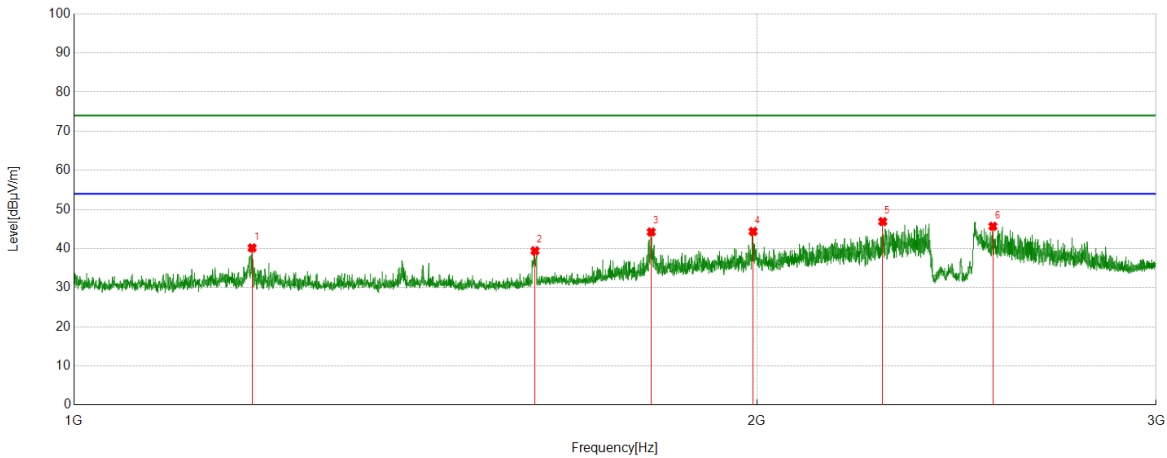
Test Mode	Channel	Polarization	Verdict
11B	MCH	Vertical	PASS



No.	Frequency (MHz)	Reading Level (dBuV)	Correct Factor (dB/m)	Result (dBuV/m)	Limit (dBuV/m)	Margin (dB)	Remark
1	1394.2993	61.34	-20.52	40.82	74.00	33.18	peak
2	1598.5748	57.97	-18.71	39.26	74.00	34.74	peak
3	1763.3454	62.72	-18.07	44.65	74.00	29.35	peak
4	1794.0993	64.00	-17.83	46.17	74.00	27.83	peak
5	2346.4183	62.71	-14.75	47.96	74.00	26.04	peak
6	2571.4464	60.20	-13.46	46.74	74.00	27.26	peak

- Note: 1. Measurement = Reading Level + Correct Factor.
2. If Peak Result complies with AV limit, AV Result is deemed to comply with AV limit.
3. Test setup: RBW: 1 MHz, VBW: 3 MHz, Sweep time: auto.
4. Peak: Peak detector.
5. AVG: VBW refer to section 7.2.
6. For below 3GHz part, filter losses were only considered in the spurious frequency bands and the authorized band was not corrected for Band Reject Filter losses
The proper operation of the transmitter prior to adding the filter to the measurement chain.
7. Only the worst case emission was recorded, if it complies with the limit, the other emissions deemed to comply with the limit.

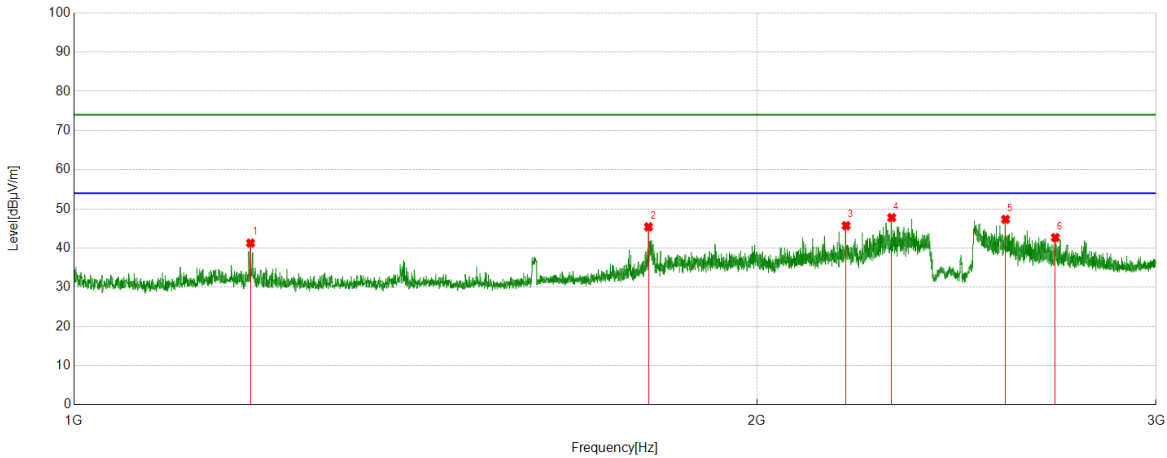
Test Mode	Channel	Polarization	Verdict
11B	HCH	Horizontal	PASS



No.	Frequency	Reading Level	Correct Factor	Result	Limit	Margin	Remark
	(MHz)	(dBuV)	(dB/m)	(dBuV/m)	(dBuV/m)	(dB)	
1	1198.2748	62.14	-21.97	40.17	74.00	33.83	peak
2	1596.8246	58.14	-18.71	39.43	74.00	34.57	peak
3	1796.8496	62.00	-17.76	44.24	74.00	29.76	peak
4	1992.6241	60.71	-16.33	44.38	74.00	29.62	peak
5	2272.9091	62.33	-15.43	46.90	74.00	27.10	peak
6	2541.9427	59.29	-13.60	45.69	74.00	28.31	peak

- Note: 1. Measurement = Reading Level + Correct Factor.
2. If Peak Result complies with AV limit, AV Result is deemed to comply with AV limit.
3. Test setup: RBW: 1 MHz, VBW: 3 MHz, Sweep time: auto.
4. Peak: Peak detector.
5. AVG: VBW refer to section 7.2.
6. For below 3GHz part, filter losses were only considered in the spurious frequency bands and the authorized band was not corrected for Band Reject Filter losses
The proper operation of the transmitter prior to adding the filter to the measurement chain.
7. Only the worst case emission was recorded, if it complies with the limit, the other emissions deemed to comply with the limit.

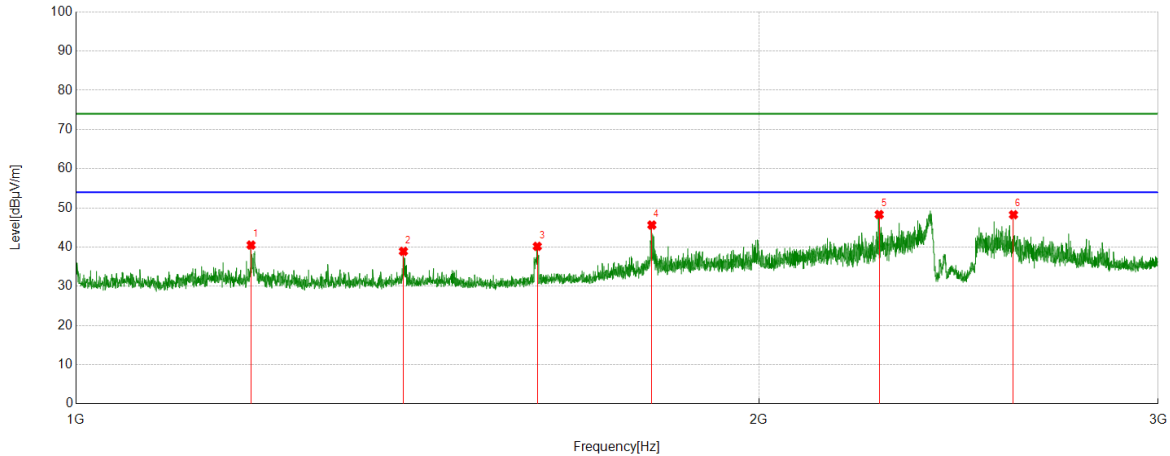
Test Mode	Channel	Polarization	Verdict
11B	HCH	Vertical	PASS



No.	Frequency (MHz)	Reading Level (dBuV)	Correct Factor (dB/m)	Result (dBuV/m)	Limit (dBuV/m)	Margin (dB)	Remark
1	1196.2745	63.23	-21.95	41.28	74.00	32.72	peak
2	1791.849	63.29	-17.88	45.41	74.00	28.59	peak
3	2189.8987	61.63	-15.91	45.72	74.00	28.28	peak
4	2293.6617	63.07	-15.28	47.79	74.00	26.21	peak
5	2574.6968	60.81	-13.47	47.34	74.00	26.66	peak
6	2708.2135	55.50	-12.81	42.69	74.00	31.31	peak

- Note: 1. Measurement = Reading Level + Correct Factor.
2. If Peak Result complies with AV limit, AV Result is deemed to comply with AV limit.
3. Test setup: RBW: 1 MHz, VBW: 3 MHz, Sweep time: auto.
4. Peak: Peak detector.
5. AVG: VBW refer to section 7.2.
6. For below 3GHz part, filter losses were only considered in the spurious frequency bands and the authorized band was not corrected for Band Reject Filter losses
The proper operation of the transmitter prior to adding the filter to the measurement chain.
7. Only the worst case emission was recorded, if it complies with the limit, the other emissions deemed to comply with the limit.

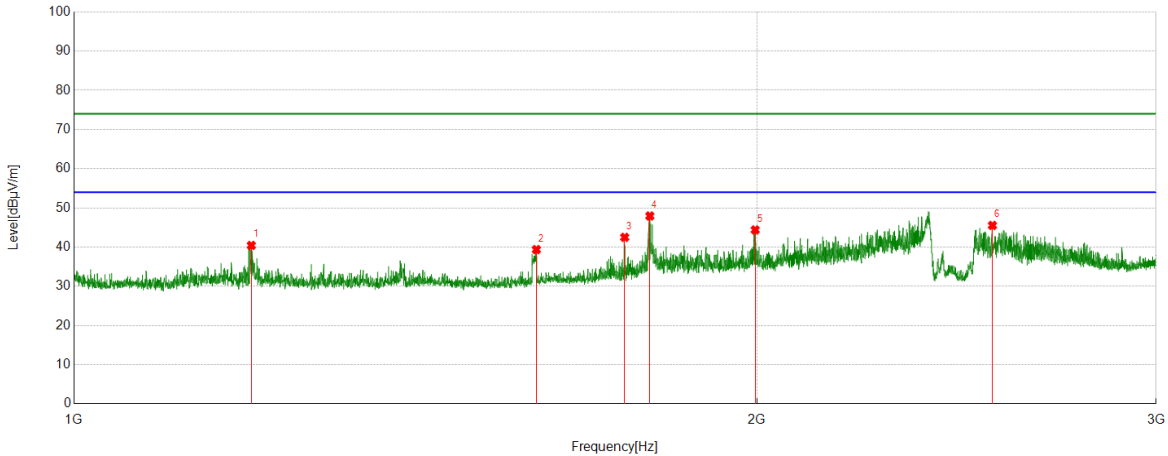
Test Mode	Channel	Polarization	Verdict
11G	LCH	Horizontal	PASS



No.	Frequency	Reading Level	Correct Factor	Result	Limit	Margin	Remark
	(MHz)	(dBuV)	(dB/m)	(dBuV/m)	(dBuV/m)	(dB)	
1	1194.5243	62.45	-21.93	40.52	74.00	33.48	peak
2	1394.2993	59.44	-20.52	38.92	74.00	35.08	peak
3	1597.3247	58.89	-18.70	40.19	74.00	33.81	peak
4	1794.3493	63.45	-17.82	45.63	74.00	28.37	peak
5	2260.1575	63.53	-15.22	48.31	74.00	25.69	peak
6	2590.1988	61.66	-13.40	48.26	74.00	25.74	peak

- Note: 1. Measurement = Reading Level + Correct Factor.
2. If Peak Result complies with AV limit, AV Result is deemed to comply with AV limit.
3. Test setup: RBW: 1 MHz, VBW: 3 MHz, Sweep time: auto.
4. Peak: Peak detector.
5. AVG: VBW refer to section 7.2.
6. For below 3GHz part, filter losses were only considered in the spurious frequency bands and the authorized band was not corrected for Band Reject Filter losses
The proper operation of the transmitter prior to adding the filter to the measurement chain.
7. Only the worst case emission was recorded, if it complies with the limit, the other emissions deemed to comply with the limit.

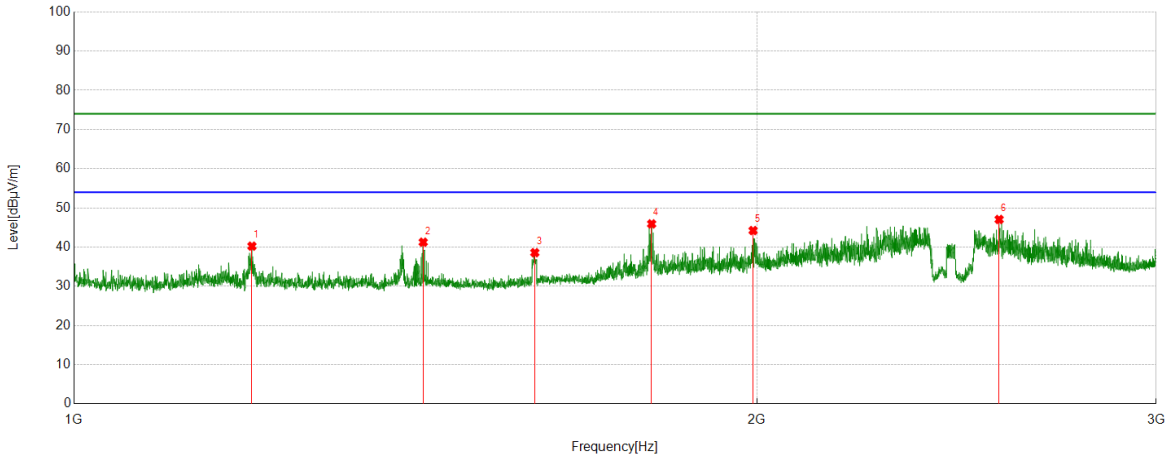
Test Mode	Channel	Polarization	Verdict
11G	LCH	Vertical	PASS



No.	Frequency	Reading Level	Correct Factor	Result	Limit	Margin	Remark
	(MHz)	(dBuV)	(dB/m)	(dBuV/m)	(dBuV/m)	(dB)	
1	1197.2747	62.39	-21.96	40.43	74.00	33.57	peak
2	1599.0749	58.06	-18.70	39.36	74.00	34.64	peak
3	1749.0936	60.54	-18.05	42.49	74.00	31.51	peak
4	1794.3493	65.76	-17.82	47.94	74.00	26.06	peak
5	1996.8746	60.68	-16.30	44.38	74.00	29.62	peak
6	2540.6926	59.09	-13.56	45.53	74.00	28.47	peak

- Note: 1. Measurement = Reading Level + Correct Factor.
2. If Peak Result complies with AV limit, AV Result is deemed to comply with AV limit.
3. Test setup: RBW: 1 MHz, VBW: 3 MHz, Sweep time: auto.
4. Peak: Peak detector.
5. AVG: VBW refer to section 7.2.
6. For below 3GHz part, filter losses were only considered in the spurious frequency bands and the authorized band was not corrected for Band Reject Filter losses
The proper operation of the transmitter prior to adding the filter to the measurement chain.
7. Only the worst case emission was recorded, if it complies with the limit, the other emissions deemed to comply with the limit.

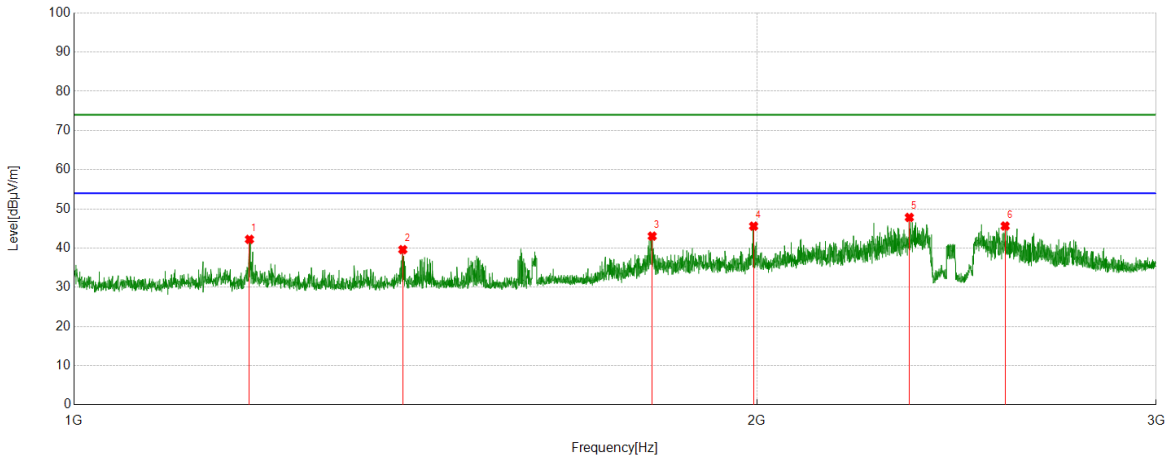
Test Mode	Channel	Polarization	Verdict
11G	MCH	Horizontal	PASS



No.	Frequency	Reading Level	Correct Factor	Result	Limit	Margin	Remark
	(MHz)	(dBuV)	(dB/m)	(dBuV/m)	(dBuV/m)	(dB)	
1	1198.0248	62.20	-21.96	40.24	74.00	33.76	peak
2	1425.5532	61.38	-20.13	41.25	74.00	32.75	peak
3	1596.5746	57.28	-18.70	38.58	74.00	35.42	peak
4	1797.5997	63.66	-17.74	45.92	74.00	28.08	peak
5	1992.6241	60.55	-16.33	44.22	74.00	29.78	peak
6	2557.9447	60.83	-13.78	47.05	74.00	26.95	peak

- Note: 1. Measurement = Reading Level + Correct Factor.
2. If Peak Result complies with AV limit, AV Result is deemed to comply with AV limit.
3. Test setup: RBW: 1 MHz, VBW: 3 MHz, Sweep time: auto.
4. Peak: Peak detector.
5. AVG: VBW refer to section 7.2.
6. For below 3GHz part, filter losses were only considered in the spurious frequency bands and the authorized band was not corrected for Band Reject Filter losses
The proper operation of the transmitter prior to adding the filter to the measurement chain.
7. Only the worst case emission was recorded, if it complies with the limit, the other emissions deemed to comply with the limit.

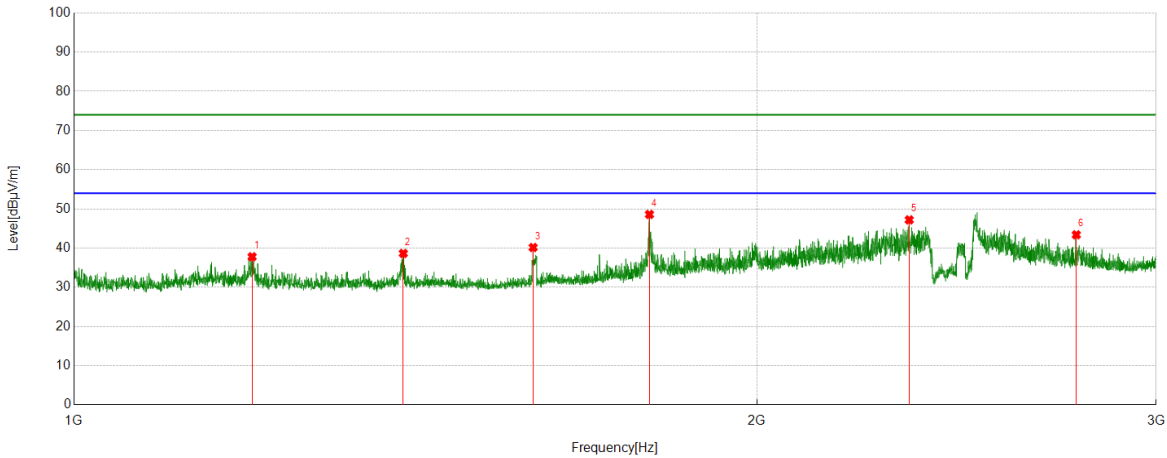
Test Mode	Channel	Polarization	Verdict
11G	MCH	Vertical	PASS



No.	Frequency	Reading Level	Correct Factor	Result	Limit	Margin	Remark
	(MHz)	(dBuV)	(dB/m)	(dBuV/m)	(dBuV/m)	(dB)	
1	1195.0244	64.17	-21.94	42.23	74.00	31.77	peak
2	1396.2995	60.11	-20.50	39.61	74.00	34.39	peak
3	1798.5998	60.77	-17.72	43.05	74.00	30.95	peak
4	1993.6242	61.92	-16.32	45.60	74.00	28.40	peak
5	2335.1669	62.69	-14.87	47.82	74.00	26.18	peak
6	2573.6967	59.10	-13.47	45.63	74.00	28.37	peak

- Note: 1. Measurement = Reading Level + Correct Factor.
2. If Peak Result complies with AV limit, AV Result is deemed to comply with AV limit.
3. Test setup: RBW: 1 MHz, VBW: 3 MHz, Sweep time: auto.
4. Peak: Peak detector.
5. AVG: VBW refer to section 7.2.
6. For below 3GHz part, filter losses were only considered in the spurious frequency bands and the authorized band was not corrected for Band Reject Filter losses
The proper operation of the transmitter prior to adding the filter to the measurement chain.
7. Only the worst case emission was recorded, if it complies with the limit, the other emissions deemed to comply with the limit.

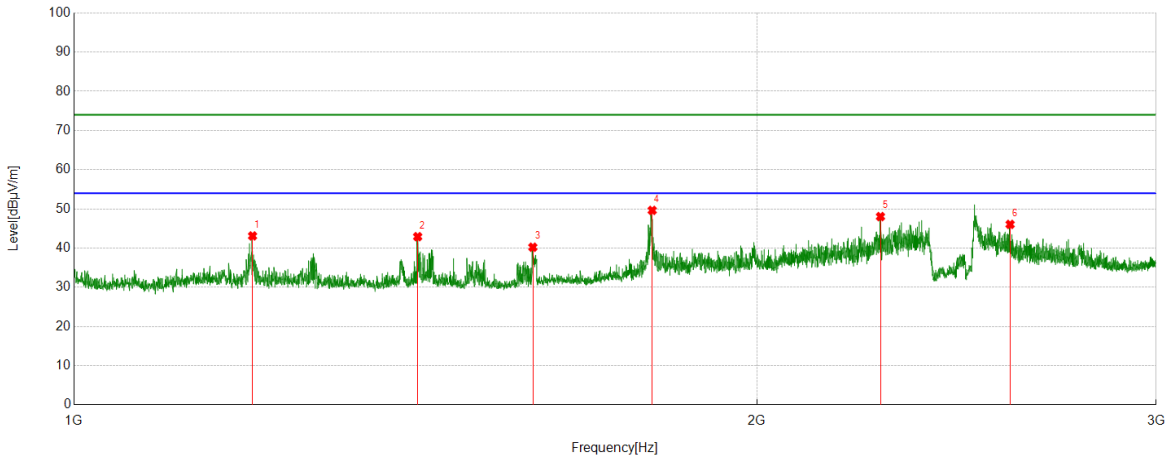
Test Mode	Channel	Polarization	Verdict
11G	HCH	Horizontal	PASS



No.	Frequency	Reading Level	Correct Factor	Result	Limit	Margin	Remark
	(MHz)	(dBuV)	(dB/m)	(dBuV/m)	(dBuV/m)	(dB)	
1	1198.2748	59.75	-21.97	37.78	74.00	36.22	peak
2	1397.0496	59.13	-20.49	38.64	74.00	35.36	peak
3	1593.8242	58.86	-18.71	40.15	74.00	33.85	peak
4	1793.5992	66.43	-17.84	48.59	74.00	25.41	peak
5	2334.9169	62.07	-14.87	47.20	74.00	26.80	peak
6	2766.4708	56.32	-12.93	43.39	74.00	30.61	peak

- Note: 1. Measurement = Reading Level + Correct Factor.
2. If Peak Result complies with AV limit, AV Result is deemed to comply with AV limit.
3. Test setup: RBW: 1 MHz, VBW: 3 MHz, Sweep time: auto.
4. Peak: Peak detector.
5. AVG: VBW refer to section 7.2.
6. For below 3GHz part, filter losses were only considered in the spurious frequency bands and the authorized band was not corrected for Band Reject Filter losses
The proper operation of the transmitter prior to adding the filter to the measurement chain.
7. Only the worst case emission was recorded, if it complies with the limit, the other emissions deemed to comply with the limit.

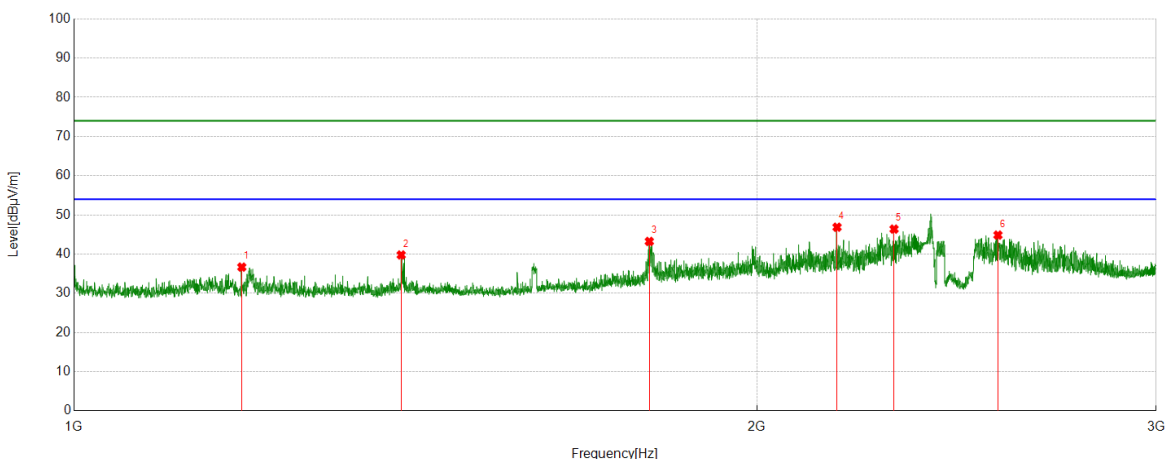
Test Mode	Channel	Polarization	Verdict
11G	HCH	Vertical	PASS



No.	Frequency	Reading Level	Correct Factor	Result	Limit	Margin	Remark
	(MHz)	(dBuV)	(dB/m)	(dBuV/m)	(dBuV/m)	(dB)	
1	1198.7748	65.08	-21.98	43.10	74.00	30.90	peak
2	1417.5522	63.18	-20.27	42.91	74.00	31.09	peak
3	1593.3242	58.93	-18.71	40.22	74.00	33.78	peak
4	1798.5998	67.34	-17.72	49.62	74.00	24.38	peak
5	2267.6585	63.48	-15.44	48.04	74.00	25.96	peak
6	2586.6983	59.48	-13.43	46.05	74.00	27.95	peak

- Note: 1. Measurement = Reading Level + Correct Factor.
2. If Peak Result complies with AV limit, AV Result is deemed to comply with AV limit.
3. Test setup: RBW: 1 MHz, VBW: 3 MHz, Sweep time: auto.
4. Peak: Peak detector.
5. AVG: VBW refer to section 7.2.
6. For below 3GHz part, filter losses were only considered in the spurious frequency bands and the authorized band was not corrected for Band Reject Filter losses
The proper operation of the transmitter prior to adding the filter to the measurement chain.
7. Only the worst case emission was recorded, if it complies with the limit, the other emissions deemed to comply with the limit.

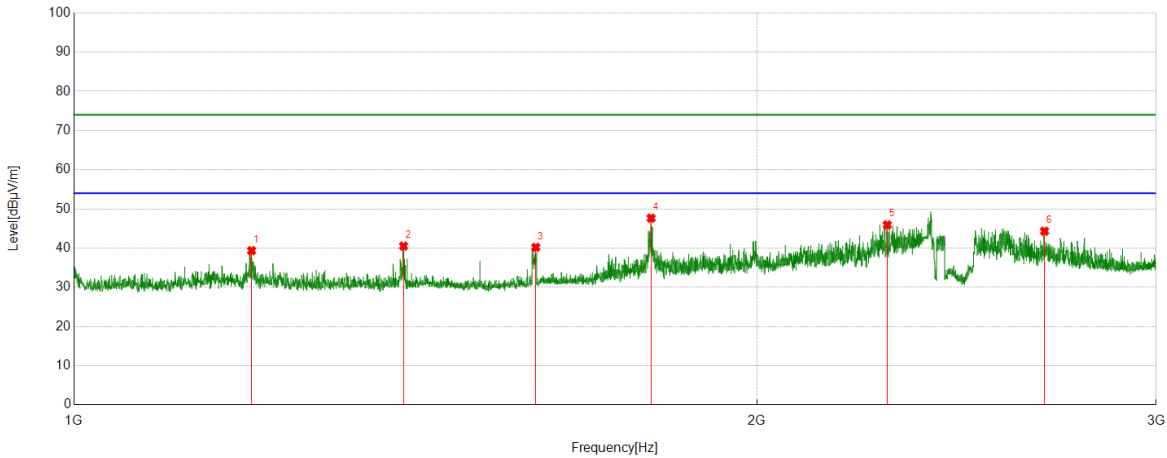
Test Mode	Channel	Polarization	Verdict
11N HT20	LCH	Horizontal	PASS



No.	Frequency (MHz)	Reading Level (dBuV)	Correct Factor (dB/m)	Result (dBuV/m)	Limit (dBuV/m)	Margin (dB)	Remark
1	1185.7732	58.53	-21.85	36.68	74.00	37.32	peak
2	1394.0493	60.31	-20.53	39.78	74.00	34.22	peak
3	1793.3492	61.08	-17.85	43.23	74.00	30.77	peak
4	2169.8962	62.83	-15.97	46.86	74.00	27.14	peak
5	2299.1624	61.78	-15.41	46.37	74.00	27.63	peak
6	2554.9444	58.64	-13.79	44.85	74.00	29.15	peak

- Note: 1. Measurement = Reading Level + Correct Factor.
2. If Peak Result complies with AV limit, AV Result is deemed to comply with AV limit.
3. Test setup: RBW: 1 MHz, VBW: 3 MHz, Sweep time: auto.
4. Peak: Peak detector.
5. AVG: VBW refer to section 7.2.
6. For below 3GHz part, filter losses were only considered in the spurious frequency bands and the authorized band was not corrected for Band Reject Filter losses
The proper operation of the transmitter prior to adding the filter to the measurement chain.
7. Only the worst case emission was recorded, if it complies with the limit, the other emissions deemed to comply with the limit.

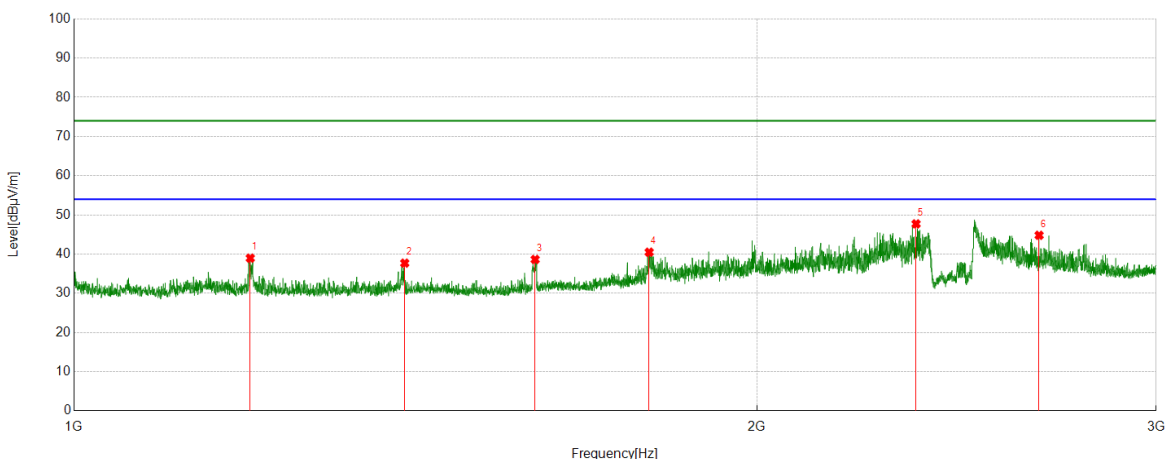
Test Mode	Channel	Polarization	Verdict
11N HT20	LCH	Vertical	PASS



No.	Frequency	Reading Level	Correct Factor	Result	Limit	Margin	Remark
	(MHz)	(dBuV)	(dB/m)	(dBuV/m)	(dBuV/m)	(dB)	
1	1197.5247	61.31	-21.96	39.35	74.00	34.65	peak
2	1397.2997	61.01	-20.49	40.52	74.00	33.48	peak
3	1598.0748	58.91	-18.71	40.20	74.00	33.80	peak
4	1796.5996	65.41	-17.76	47.65	74.00	26.35	peak
5	2283.4104	61.14	-15.22	45.92	74.00	28.08	peak
6	2678.7098	57.26	-12.95	44.31	74.00	29.69	peak

- Note: 1. Measurement = Reading Level + Correct Factor.
2. If Peak Result complies with AV limit, AV Result is deemed to comply with AV limit.
3. Test setup: RBW: 1 MHz, VBW: 3 MHz, Sweep time: auto.
4. Peak: Peak detector.
5. AVG: VBW refer to section 7.2.
6. For below 3GHz part, filter losses were only considered in the spurious frequency bands and the authorized band was not corrected for Band Reject Filter losses
The proper operation of the transmitter prior to adding the filter to the measurement chain.
7. Only the worst case emission was recorded, if it complies with the limit, the other emissions deemed to comply with the limit.

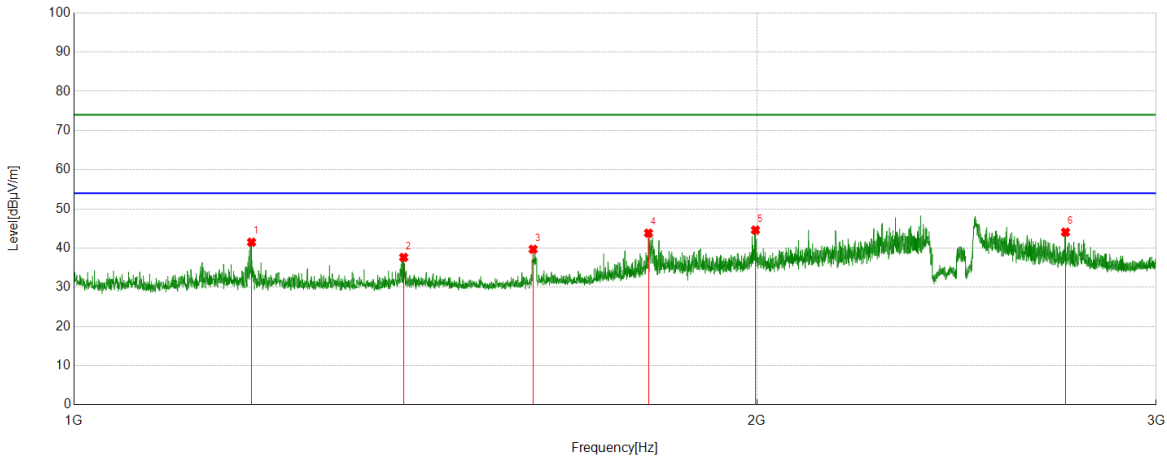
Test Mode	Channel	Polarization	Verdict
11N HT20	MCH	Horizontal	PASS



No.	Frequency	Reading Level	Correct Factor	Result	Limit	Margin	Remark
	(MHz)	(dBuV)	(dB/m)	(dBuV/m)	(dBuV/m)	(dB)	
1	1196.0245	60.91	-21.95	38.96	74.00	35.04	peak
2	1399.0499	58.15	-20.46	37.69	74.00	36.31	peak
3	1597.0746	57.34	-18.71	38.63	74.00	35.37	peak
4	1793.0991	58.33	-17.85	40.48	74.00	33.52	peak
5	2351.1689	62.46	-14.76	47.70	74.00	26.30	peak
6	2663.958	58.03	-13.23	44.80	74.00	29.20	peak

- Note: 1. Measurement = Reading Level + Correct Factor.
2. If Peak Result complies with AV limit, AV Result is deemed to comply with AV limit.
3. Test setup: RBW: 1 MHz, VBW: 3 MHz, Sweep time: auto.
4. Peak: Peak detector.
5. AVG: VBW refer to section 7.2.
6. For below 3GHz part, filter losses were only considered in the spurious frequency bands and the authorized band was not corrected for Band Reject Filter losses
The proper operation of the transmitter prior to adding the filter to the measurement chain.
7. Only the worst case emission was recorded, if it complies with the limit, the other emissions deemed to comply with the limit.

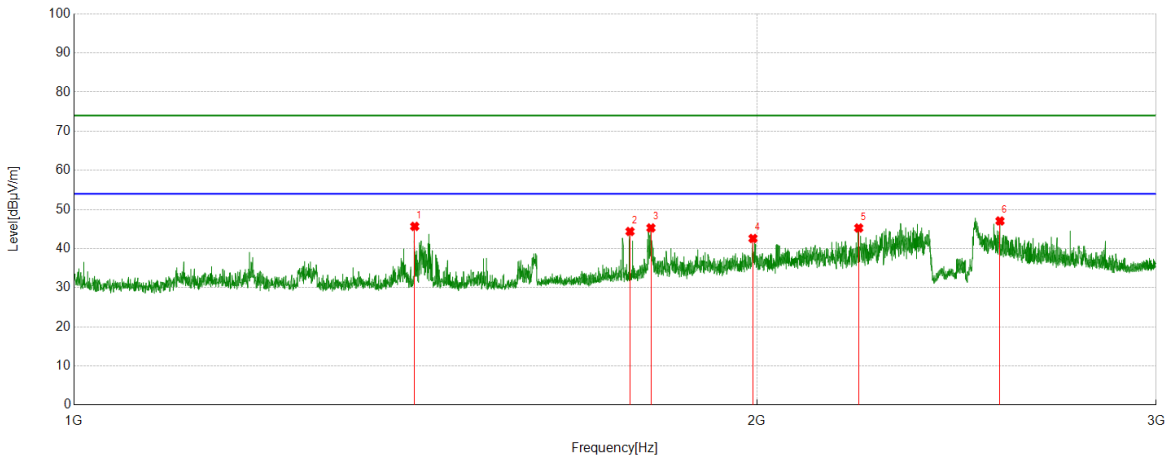
Test Mode	Channel	Polarization	Verdict
11N HT20	MCH	Vertical	PASS



No.	Frequency	Reading Level	Correct Factor	Result	Limit	Margin	Remark
	(MHz)	(dBuV)	(dB/m)	(dBuV/m)	(dBuV/m)	(dB)	
1	1197.5247	63.46	-21.96	41.50	74.00	32.50	peak
2	1397.5497	58.11	-20.48	37.63	74.00	36.37	peak
3	1593.8242	58.42	-18.71	39.71	74.00	34.29	peak
4	1791.849	61.70	-17.88	43.82	74.00	30.18	peak
5	1997.3747	60.90	-16.30	44.60	74.00	29.40	peak
6	2736.217	56.68	-12.61	44.07	74.00	29.93	peak

- Note: 1. Measurement = Reading Level + Correct Factor.
2. If Peak Result complies with AV limit, AV Result is deemed to comply with AV limit.
3. Test setup: RBW: 1 MHz, VBW: 3 MHz, Sweep time: auto.
4. Peak: Peak detector.
5. AVG: VBW refer to section 7.2.
6. For below 3GHz part, filter losses were only considered in the spurious frequency bands and the authorized band was not corrected for Band Reject Filter losses
The proper operation of the transmitter prior to adding the filter to the measurement chain.
7. Only the worst case emission was recorded, if it complies with the limit, the other emissions deemed to comply with the limit.

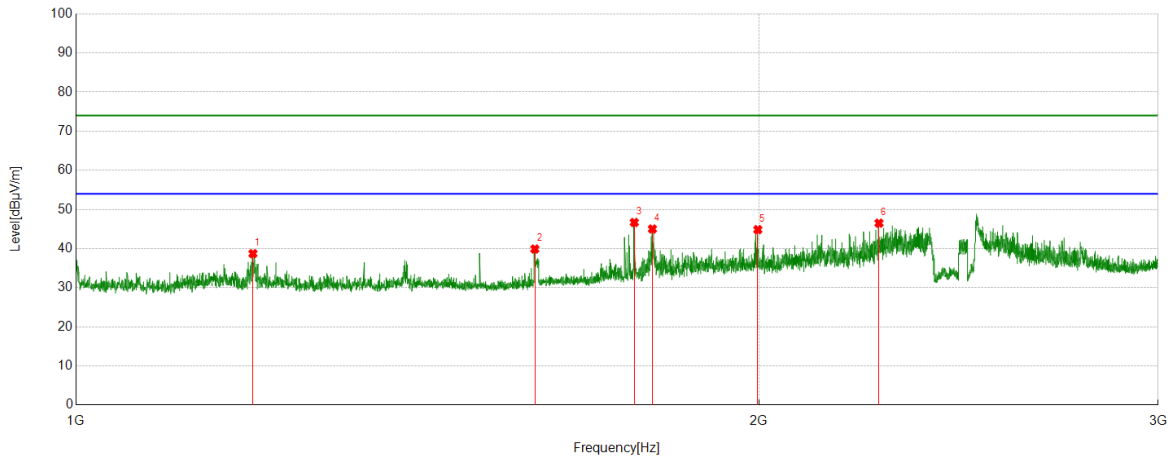
Test Mode	Channel	Polarization	Verdict
11N HT20	HCH	Horizontal	PASS



No.	Frequency	Reading Level	Correct Factor	Result	Limit	Margin	Remark
	(MHz)	(dBuV)	(dB/m)	(dBuV/m)	(dBuV/m)	(dB)	
1	1413.3017	65.88	-20.21	45.67	74.00	28.33	peak
2	1758.5948	62.42	-18.05	44.37	74.00	29.63	peak
3	1796.3495	63.05	-17.77	45.28	74.00	28.72	peak
4	1992.374	58.93	-16.34	42.59	74.00	31.41	peak
5	2218.1523	60.66	-15.40	45.26	74.00	28.74	peak
6	2560.195	60.83	-13.77	47.06	74.00	26.94	peak

- Note: 1. Measurement = Reading Level + Correct Factor.
2. If Peak Result complies with AV limit, AV Result is deemed to comply with AV limit.
3. Test setup: RBW: 1 MHz, VBW: 3 MHz, Sweep time: auto.
4. Peak: Peak detector.
5. AVG: VBW refer to section 7.2.
6. For below 3GHz part, filter losses were only considered in the spurious frequency bands and the authorized band was not corrected for Band Reject Filter losses
The proper operation of the transmitter prior to adding the filter to the measurement chain.
7. Only the worst case emission was recorded, if it complies with the limit, the other emissions deemed to comply with the limit.

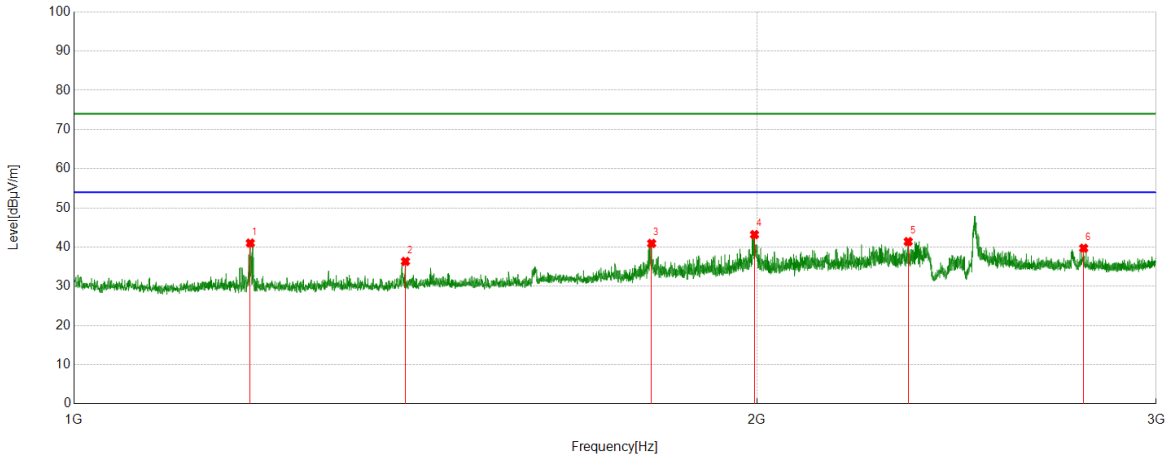
Test Mode	Channel	Polarization	Verdict
11N HT20	HCH	Vertical	PASS



No.	Frequency	Reading Level	Correct Factor	Result	Limit	Margin	Remark
	(MHz)	(dBuV)	(dB/m)	(dBuV/m)	(dBuV/m)	(dB)	
1	1196.7746	60.66	-21.95	38.71	74.00	35.29	peak
2	1593.3242	58.60	-18.71	39.89	74.00	34.11	peak
3	1762.5953	64.74	-18.06	46.68	74.00	27.32	peak
4	1795.3494	62.81	-17.80	45.01	74.00	28.99	peak
5	1998.1248	61.13	-16.29	44.84	74.00	29.16	peak
6	2259.6575	61.70	-15.20	46.50	74.00	27.50	peak

- Note: 1. Measurement = Reading Level + Correct Factor.
2. If Peak Result complies with AV limit, AV Result is deemed to comply with AV limit.
3. Test setup: RBW: 1 MHz, VBW: 3 MHz, Sweep time: auto.
4. Peak: Peak detector.
5. AVG: VBW refer to section 7.2.
6. For below 3GHz part, filter losses were only considered in the spurious frequency bands and the authorized band was not corrected for Band Reject Filter losses
The proper operation of the transmitter prior to adding the filter to the measurement chain.
7. Only the worst case emission was recorded, if it complies with the limit, the other emissions deemed to comply with the limit.

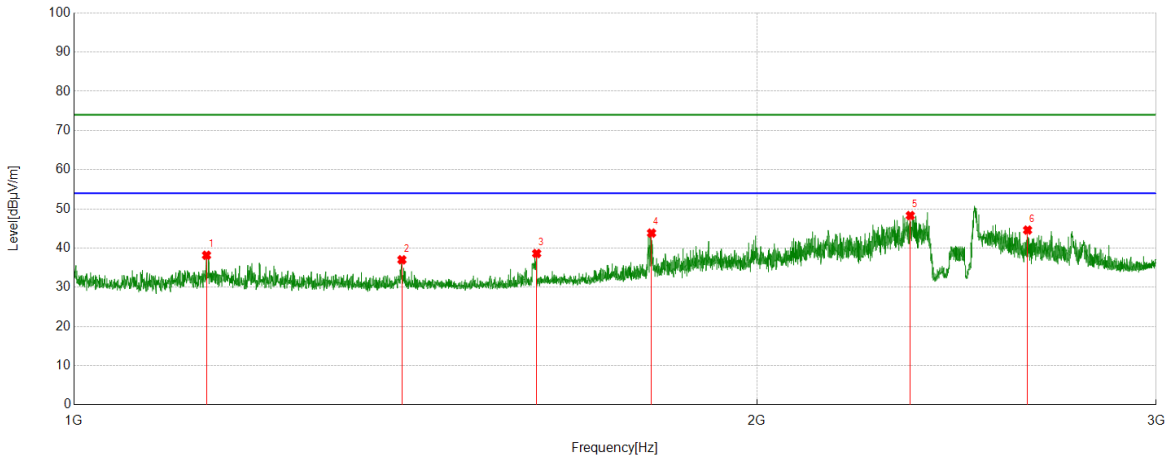
Test Mode	Channel	Polarization	Verdict
11N HT40	LCH	Horizontal	PASS



No.	Frequency	Reading Level	Correct Factor	Result	Limit	Margin	Remark
	(MHz)	(dBuV)	(dB/m)	(dBuV/m)	(dBuV/m)	(dB)	
1	1196.0245	62.97	-21.95	41.02	74.00	32.98	peak
2	1400.05	56.80	-20.45	36.35	74.00	37.65	peak
3	1797.5997	58.67	-17.74	40.93	74.00	33.07	peak
4	1995.3744	59.50	-16.32	43.18	74.00	30.82	peak
5	2332.4166	56.34	-14.95	41.39	74.00	32.61	peak
6	2787.2234	52.52	-12.81	39.71	74.00	34.29	peak

- Note: 1. Measurement = Reading Level + Correct Factor.
2. If Peak Result complies with AV limit, AV Result is deemed to comply with AV limit.
3. Test setup: RBW: 1 MHz, VBW: 3 MHz, Sweep time: auto.
4. Peak: Peak detector.
5. AVG: VBW refer to section 7.2.
6. For below 3GHz part, filter losses were only considered in the spurious frequency bands and the authorized band was not corrected for Band Reject Filter losses
The proper operation of the transmitter prior to adding the filter to the measurement chain.
7. Only the worst case emission was recorded, if it complies with the limit, the other emissions deemed to comply with the limit.

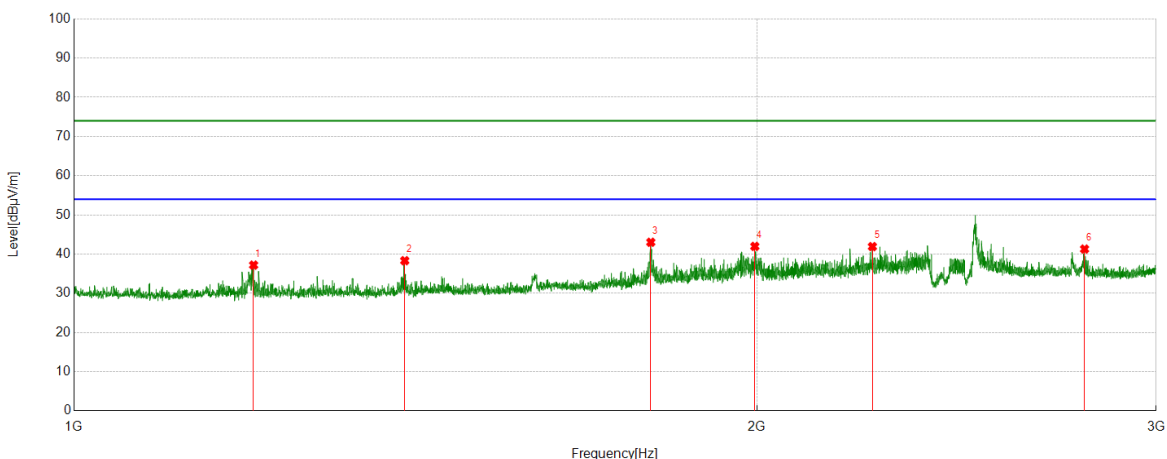
Test Mode	Channel	Polarization	Verdict
11N HT40	LCH	Vertical	PASS



No.	Frequency	Reading Level	Correct Factor	Result	Limit	Margin	Remark
	(MHz)	(dBuV)	(dB/m)	(dBuV/m)	(dBuV/m)	(dB)	
1	1144.018	59.54	-21.37	38.17	74.00	35.83	peak
2	1395.0494	57.52	-20.51	37.01	74.00	36.99	peak
3	1599.5749	57.33	-18.71	38.62	74.00	35.38	peak
4	1797.3497	61.58	-17.75	43.83	74.00	30.17	peak
5	2337.4172	63.10	-14.80	48.30	74.00	25.70	peak
6	2632.9541	57.89	-13.30	44.59	74.00	29.41	peak

- Note: 1. Measurement = Reading Level + Correct Factor.
2. If Peak Result complies with AV limit, AV Result is deemed to comply with AV limit.
3. Test setup: RBW: 1 MHz, VBW: 3 MHz, Sweep time: auto.
4. Peak: Peak detector.
5. AVG: VBW refer to section 7.2.
6. For below 3GHz part, filter losses were only considered in the spurious frequency bands and the authorized band was not corrected for Band Reject Filter losses
The proper operation of the transmitter prior to adding the filter to the measurement chain.
7. Only the worst case emission was recorded, if it complies with the limit, the other emissions deemed to comply with the limit.

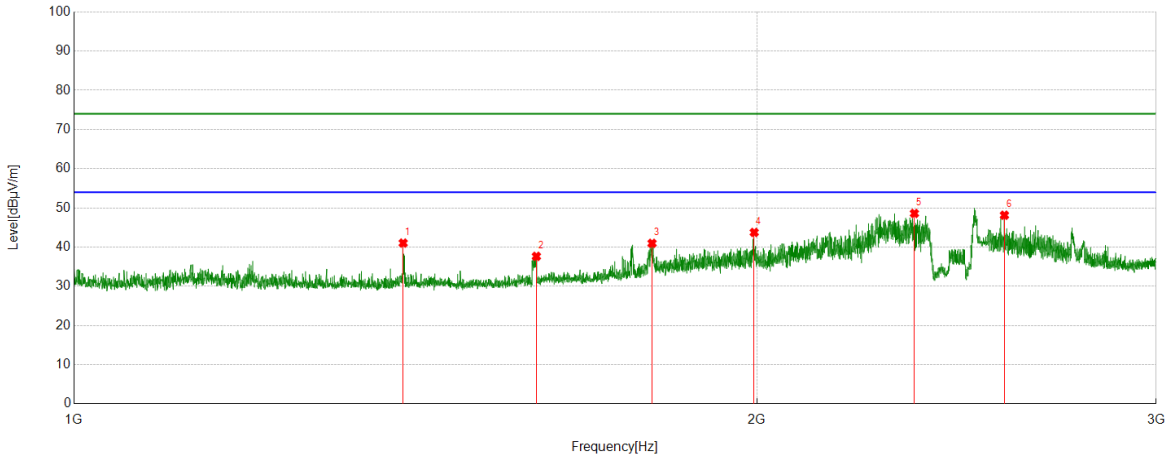
Test Mode	Channel	Polarization	Verdict
11N HT40	MCH	Horizontal	PASS



No.	Frequency	Reading Level	Correct Factor	Result	Limit	Margin	Remark
	(MHz)	(dBuV)	(dB/m)	(dBuV/m)	(dBuV/m)	(dB)	
1	1200.025	59.18	-21.99	37.19	74.00	36.81	peak
2	1399.0499	58.78	-20.46	38.32	74.00	35.68	peak
3	1796.0995	60.79	-17.77	43.02	74.00	30.98	peak
4	1996.1245	58.27	-16.31	41.96	74.00	32.04	peak
5	2249.1561	56.86	-14.95	41.91	74.00	32.09	peak
6	2789.7237	54.06	-12.78	41.28	74.00	32.72	peak

- Note: 1. Measurement = Reading Level + Correct Factor.
2. If Peak Result complies with AV limit, AV Result is deemed to comply with AV limit.
3. Test setup: RBW: 1 MHz, VBW: 3 MHz, Sweep time: auto.
4. Peak: Peak detector.
5. AVG: VBW refer to section 7.2.
6. For below 3GHz part, filter losses were only considered in the spurious frequency bands and the authorized band was not corrected for Band Reject Filter losses
The proper operation of the transmitter prior to adding the filter to the measurement chain.
7. Only the worst case emission was recorded, if it complies with the limit, the other emissions deemed to comply with the limit.

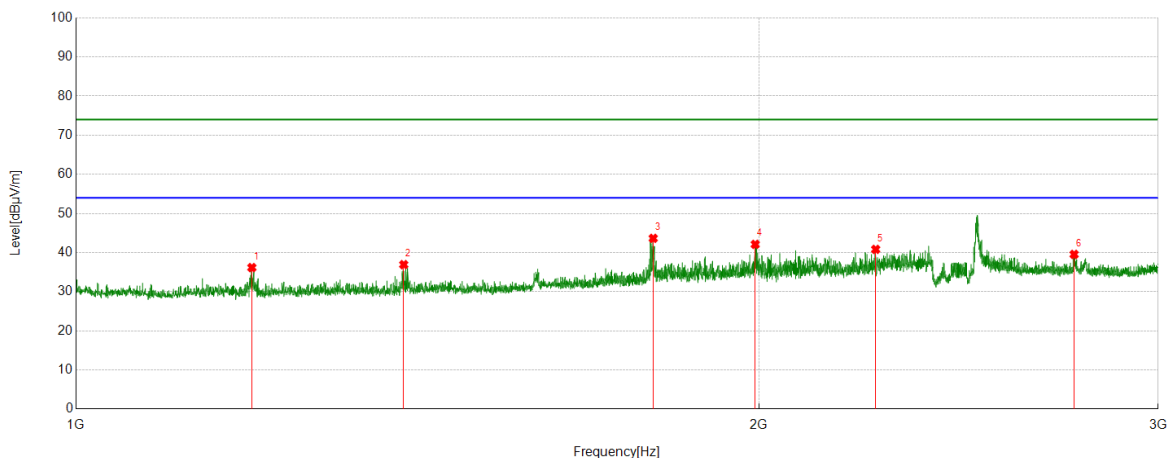
Test Mode	Channel	Polarization	Verdict
11N HT40	MCH	Vertical	PASS



No.	Frequency	Reading Level	Correct Factor	Result	Limit	Margin	Remark
	(MHz)	(dBuV)	(dB/m)	(dBuV/m)	(dBuV/m)	(dB)	
1	1396.7996	61.52	-20.49	41.03	74.00	32.97	peak
2	1599.0749	56.34	-18.70	37.64	74.00	36.36	peak
3	1798.3498	58.68	-17.72	40.96	74.00	33.04	peak
4	1994.8744	60.05	-16.31	43.74	74.00	30.26	peak
5	2347.1684	63.34	-14.75	48.59	74.00	25.41	peak
6	2571.6965	61.60	-13.47	48.13	74.00	25.87	peak

- Note: 1. Measurement = Reading Level + Correct Factor.
2. If Peak Result complies with AV limit, AV Result is deemed to comply with AV limit.
3. Test setup: RBW: 1 MHz, VBW: 3 MHz, Sweep time: auto.
4. Peak: Peak detector.
5. AVG: VBW refer to section 7.2.
6. For below 3GHz part, filter losses were only considered in the spurious frequency bands and the authorized band was not corrected for Band Reject Filter losses
The proper operation of the transmitter prior to adding the filter to the measurement chain.
7. Only the worst case emission was recorded, if it complies with the limit, the other emissions deemed to comply with the limit.

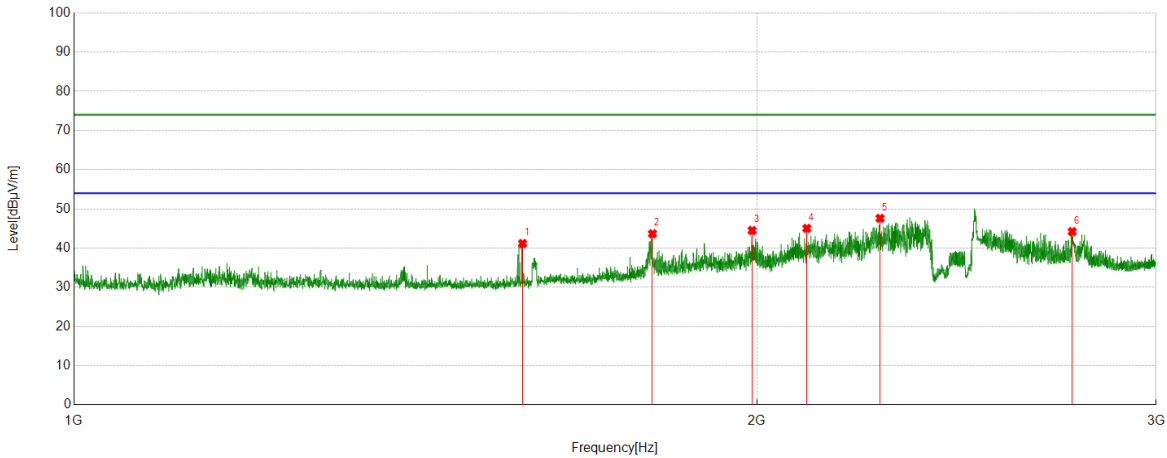
Test Mode	Channel	Polarization	Verdict
11N HT40	HCH	Horizontal	PASS



No.	Frequency	Reading Level	Correct Factor	Result	Limit	Margin	Remark
	(MHz)	(dBuV)	(dB/m)	(dBuV/m)	(dBuV/m)	(dB)	
1	1195.5244	58.11	-21.94	36.17	74.00	37.83	peak
2	1394.7994	57.44	-20.52	36.92	74.00	37.08	peak
3	1796.8496	61.40	-17.76	43.64	74.00	30.36	peak
4	1992.8741	58.44	-16.33	42.11	74.00	31.89	peak
5	2252.1565	55.82	-15.00	40.82	74.00	33.18	peak
6	2754.7193	52.28	-12.74	39.54	74.00	34.46	peak

- Note: 1. Measurement = Reading Level + Correct Factor.
2. If Peak Result complies with AV limit, AV Result is deemed to comply with AV limit.
3. Test setup: RBW: 1 MHz, VBW: 3 MHz, Sweep time: auto.
4. Peak: Peak detector.
5. AVG: VBW refer to section 7.2.
6. For below 3GHz part, filter losses were only considered in the spurious frequency bands and the authorized band was not corrected for Band Reject Filter losses
The proper operation of the transmitter prior to adding the filter to the measurement chain.
7. Only the worst case emission was recorded, if it complies with the limit, the other emissions deemed to comply with the limit.

Test Mode	Channel	Polarization	Verdict
11N HT40	HCH	Vertical	PASS



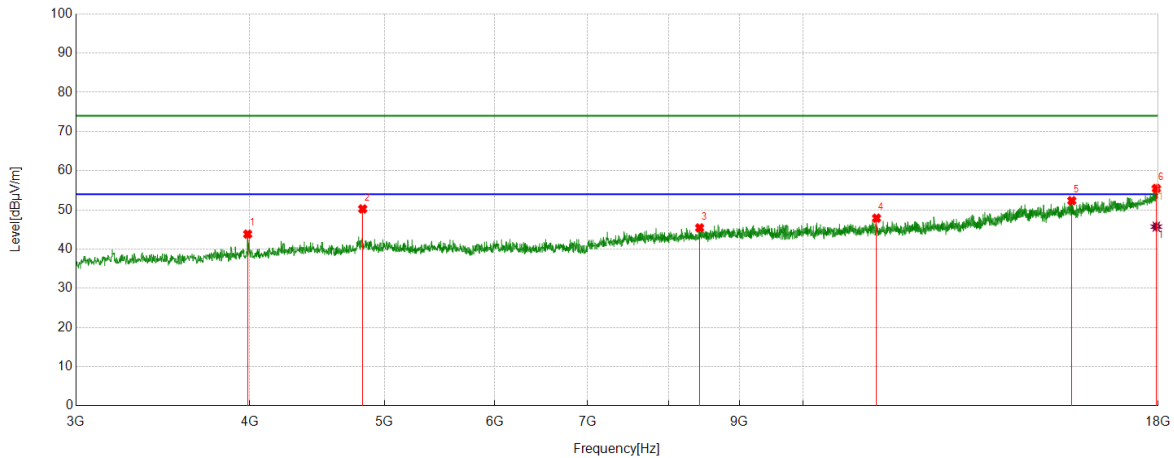
No.	Frequency	Reading Level	Correct Factor	Result	Limit	Margin	Remark
	(MHz)	(dBuV)	(dB/m)	(dBuV/m)	(dBuV/m)	(dB)	
1	1576.8221	60.39	-19.21	41.18	74.00	32.82	peak
2	1799.0999	61.37	-17.71	43.66	74.00	30.34	peak
3	1990.6238	60.84	-16.34	44.50	74.00	29.50	peak
4	2104.388	60.84	-15.80	45.04	74.00	28.96	peak
5	2266.6583	63.01	-15.42	47.59	74.00	26.41	peak
6	2754.9694	56.96	-12.75	44.21	74.00	29.79	peak

- Note: 1. Measurement = Reading Level + Correct Factor.
2. If Peak Result complies with AV limit, AV Result is deemed to comply with AV limit.
3. Test setup: RBW: 1 MHz, VBW: 3 MHz, Sweep time: auto.
4. Peak: Peak detector.
5. AVG: VBW refer to section 7.2.
6. For below 3GHz part, filter losses were only considered in the spurious frequency bands and the authorized band was not corrected for Band Reject Filter losses
The proper operation of the transmitter prior to adding the filter to the measurement chain.
7. Only the worst case emission was recorded, if it complies with the limit, the other emissions deemed to comply with the limit.

Part II: 3GHz~18GHz

HARMONICS AND SPURIOUS EMISSIONS

Test Mode	Channel	Polarization	Verdict
11B	LCH	Horizontal	PASS



No.	Frequency (MHz)	Reading Level (dBuV)	Correct Factor (dB/m)	Result (dBuV/m)	Limit (dBuV/m)	Margin (dB)	Remark
1	3986.3733	50.79	-6.98	43.81	74.00	30.19	peak
2	4822.7278	54.34	-4.09	50.25	74.00	23.75	peak
3	8425.0531	43.44	1.97	45.41	74.00	28.59	peak
4	11292.2865	42.56	5.33	47.89	74.00	26.11	peak
5	15603.4504	39.04	13.30	52.34	74.00	21.66	peak
6	17945.6182	36.99	18.48	55.47	74.00	18.53	peak
		27.24	18.48	45.72	54.00	8.28	average

Note: 1. Measurement = Reading Level + Correct Factor.

2. If Peak Result complies with AV limit, AV Result is deemed to comply with AV limit.

3. Test setup: RBW: 1 MHz, VBW: 3 MHz, Sweep time: auto.

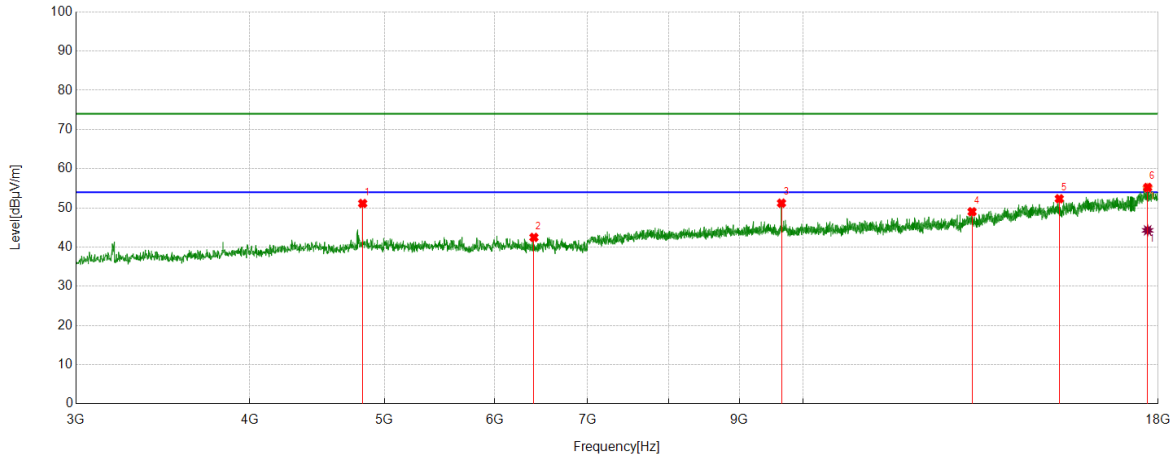
4. Peak: Peak detector.

5. AVG: VBW refer to section 7.2.

6. For above 3GHz part, filter losses were only considered in the spurious frequency bands and the authorized band was not corrected for HPF losses. The proper operation of the transmitter prior to adding the filter to the measurement chain.

7. Only the worst case emission was recorded, if it complies with the limit, the other emissions deemed to comply with the limit.

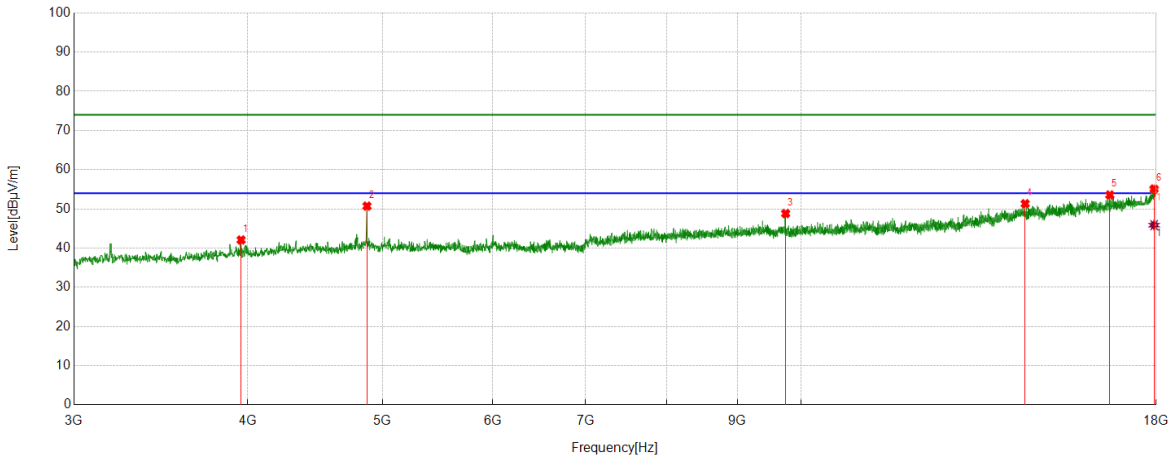
Test Mode	Channel	Polarization	Verdict
11B	LCH	Vertical	PASS



No.	Frequency	Reading Level	Correct Factor	Result	Limit	Margin	Remark
	(MHz)	(dBuV)	(dB/m)	(dBuV/m)	(dBuV/m)	(dB)	
1	4822.7278	55.22	-4.09	51.13	74.00	23.87	peak
2	6403.5504	44.24	-1.77	42.47	74.00	31.53	peak
3	9647.706	47.48	3.73	51.21	74.00	22.79	peak
4	13227.5284	40.70	8.31	49.01	74.00	24.99	peak
5	15282.7853	39.66	12.67	52.33	74.00	21.67	peak
6	17690.5863	37.67	17.54	55.21	74.00	18.79	peak
		26.73	17.54	44.27	54.00	9.73	average

- Note: 1. Measurement = Reading Level + Correct Factor.
2. If Peak Result complies with AV limit, AV Result is deemed to comply with AV limit.
3. Test setup: RBW: 1 MHz, VBW: 3 MHz, Sweep time: auto.
4. Peak: Peak detector.
5. AVG: VBW refer to section 7.2.
6. For above 3GHz part, filter losses were only considered in the spurious frequency bands and the authorized band was not corrected for HPF losses. The proper operation of the transmitter prior to adding the filter to the measurement chain.
7. Only the worst case emission was recorded, if it complies with the limit, the other emissions deemed to comply with the limit.

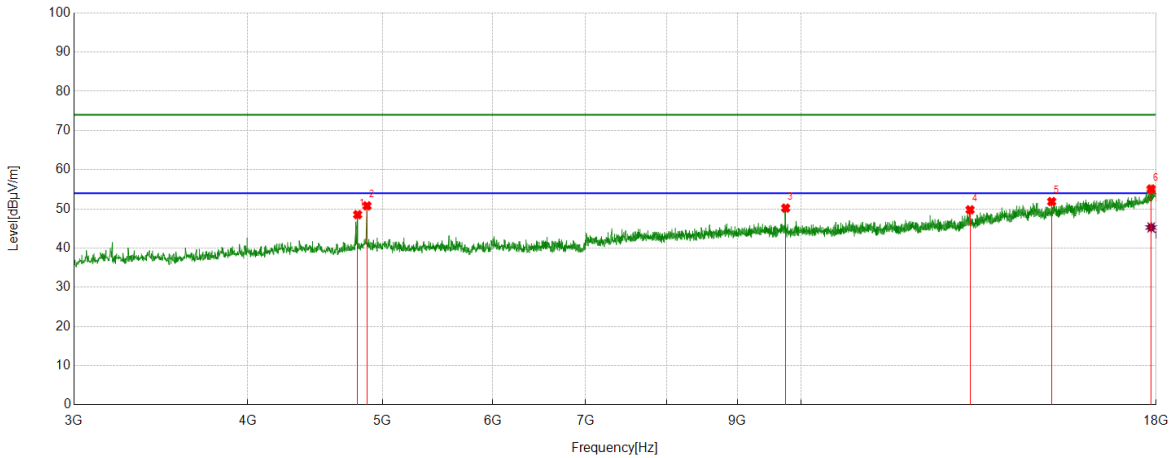
Test Mode	Channel	Polarization	Verdict
11B	MCH	Horizontal	PASS



No.	Frequency	Reading Level	Correct Factor	Result	Limit	Margin	Remark
	(MHz)	(dBuV)	(dB/m)	(dBuV/m)	(dBuV/m)	(dB)	
1	3956.3695	48.65	-6.57	42.08	74.00	31.92	peak
2	4873.3592	54.33	-3.62	50.71	74.00	23.29	peak
3	9747.0934	45.63	3.18	48.81	74.00	25.19	peak
4	14491.4364	39.70	11.62	51.32	74.00	22.68	peak
5	16672.334	38.79	14.76	53.55	74.00	20.95	peak
6	17939.9925	36.46	18.63	55.09	74.00	18.91	peak
		27.22	18.63	45.85	54.00	8.15	average

- Note: 1. Measurement = Reading Level + Correct Factor.
2. If Peak Result complies with AV limit, AV Result is deemed to comply with AV limit.
3. Test setup: RBW: 1 MHz, VBW: 3 MHz, Sweep time: auto.
4. Peak: Peak detector.
5. AVG: VBW refer to section 7.2.
6. For below 3GHz part, filter losses were only considered in the spurious frequency bands and the authorized band was not corrected for Band Reject Filter losses
The proper operation of the transmitter prior to adding the filter to the measurement chain.
7. Only the worst case emission was recorded, if it complies with the limit, the other emissions deemed to comply with the limit.

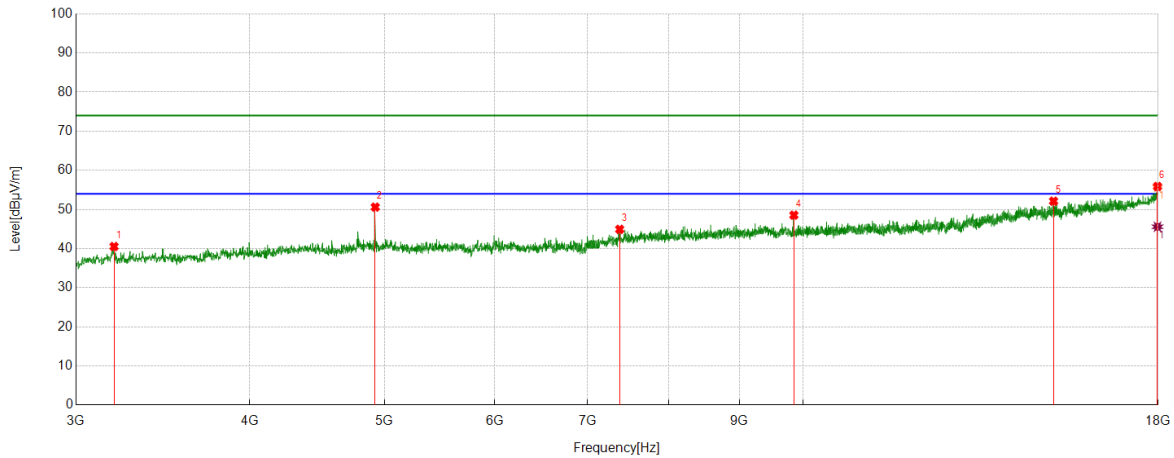
Test Mode	Channel	Polarization	Verdict
11B	MCH	Vertical	PASS



No.	Frequency	Reading Level	Correct Factor	Result	Limit	Margin	Remark
	(MHz)	(dBuV)	(dB/m)	(dBuV/m)	(dBuV/m)	(dB)	
1	4798.3498	52.24	-3.71	48.53	74.00	25.47	peak
2	4873.3592	54.39	-3.62	50.77	74.00	23.23	peak
3	9747.0934	47.02	3.18	50.20	74.00	23.80	peak
4	13227.5284	41.46	8.31	49.77	74.00	24.23	peak
5	15142.1428	40.17	11.69	51.86	74.00	22.14	peak
6	17851.8565	36.36	18.72	55.08	74.00	18.92	peak
		26.55	18.72	45.27	54.00	8.73	average

- Note: 1. Measurement = Reading Level + Correct Factor.
2. If Peak Result complies with AV limit, AV Result is deemed to comply with AV limit.
3. Test setup: RBW: 1 MHz, VBW: 3 MHz, Sweep time: auto.
4. Peak: Peak detector.
5. AVG: VBW refer to section 7.2.
6. For above 3GHz part, filter losses were only considered in the spurious frequency bands and the authorized band was not corrected for HPF losses. The proper operation of the transmitter prior to adding the filter to the measurement chain.
7. Only the worst case emission was recorded, if it complies with the limit, the other emissions deemed to comply with the limit.

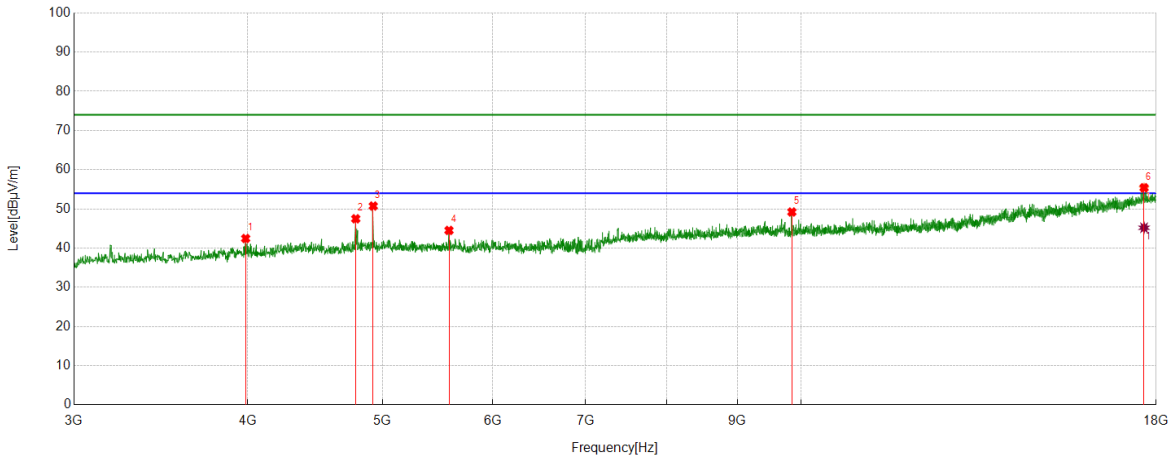
Test Mode	Channel	Polarization	Verdict
11B	HCH	Horizontal	PASS



No.	Frequency	Reading Level	Correct Factor	Result	Limit	Margin	Remark
	(MHz)	(dBuV)	(dB/m)	(dBuV/m)	(dBuV/m)	(dB)	
1	3195.0244	50.41	-9.88	40.53	74.00	33.47	peak
2	4923.9905	54.48	-3.88	50.60	74.00	23.40	peak
3	7380.5476	44.88	0.04	44.92	74.00	29.08	peak
4	9848.356	44.91	3.64	48.55	74.00	25.45	peak
5	15138.3923	40.37	11.75	52.12	74.00	21.88	peak
6	17981.2477	37.23	18.65	55.88	74.00	18.12	peak
		26.93	18.65	45.58	54.00	8.42	average

- Note: 1. Measurement = Reading Level + Correct Factor.
2. If Peak Result complies with AV limit, AV Result is deemed to comply with AV limit.
3. Test setup: RBW: 1 MHz, VBW: 3 MHz, Sweep time: auto.
4. Peak: Peak detector.
5. AVG: VBW refer to section 7.2.
6. For above 3GHz part, filter losses were only considered in the spurious frequency bands and the authorized band was not corrected for HPF losses. The proper operation of the transmitter prior to adding the filter to the measurement chain.
7. Only the worst case emission was recorded, if it complies with the limit, the other emissions deemed to comply with the limit.

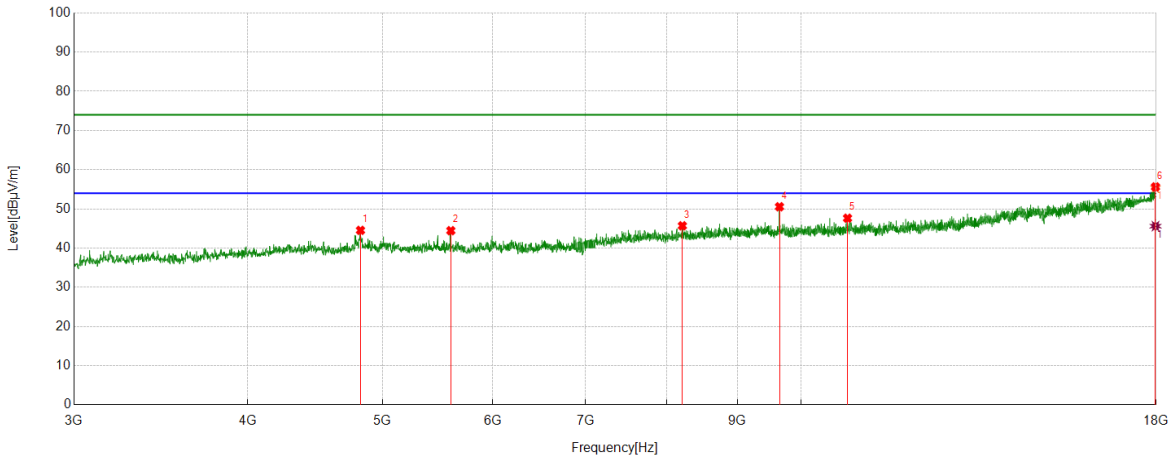
Test Mode	Channel	Polarization	Verdict
11B	HCH	Vertical	PASS



No.	Frequency (MHz)	Reading Level (dBuV)	Correct Factor (dB/m)	Result (dBuV/m)	Limit (dBuV/m)	Margin (dB)	Remark
1	3986.3733	49.43	-6.98	42.45	74.00	31.55	peak
2	4783.3479	51.13	-3.65	47.48	74.00	26.52	peak
3	4923.9905	54.61	-3.88	50.73	74.00	23.27	peak
4	5582.1978	47.52	-3.01	44.51	74.00	29.49	peak
5	9848.356	45.57	3.64	49.21	74.00	24.79	peak
6	17643.7055	37.60	17.80	55.40	74.00	18.60	peak
		27.39	17.80	45.19	54.00	8.81	average

- Note: 1. Measurement = Reading Level + Correct Factor.
2. If Peak Result complies with AV limit, AV Result is deemed to comply with AV limit.
3. Test setup: RBW: 1 MHz, VBW: 3 MHz, Sweep time: auto.
4. Peak: Peak detector.
5. AVG: VBW refer to section 7.2.
6. For above 3GHz part, filter losses were only considered in the spurious frequency bands and the authorized band was not corrected for HPF losses. The proper operation of the transmitter prior to adding the filter to the measurement chain.
7. Only the worst case emission was recorded, if it complies with the limit, the other emissions deemed to comply with the limit.

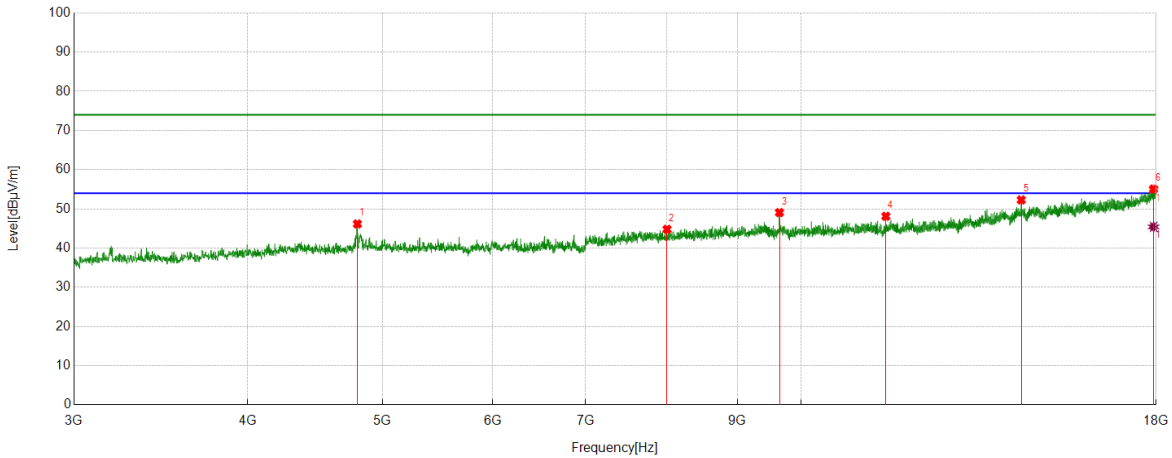
Test Mode	Channel	Polarization	Verdict
11G	LCH	Horizontal	PASS



No.	Frequency	Reading Level	Correct Factor	Result	Limit	Margin	Remark
	(MHz)	(dBuV)	(dB/m)	(dBuV/m)	(dBuV/m)	(dB)	
1	4820.8526	48.72	-4.19	44.53	74.00	29.47	peak
2	5599.0749	47.03	-2.58	44.45	74.00	29.55	peak
3	8215.0269	43.65	2.04	45.69	74.00	28.31	peak
4	9647.706	46.82	3.73	50.55	74.00	23.45	peak
5	10799.0999	43.25	4.38	47.63	74.00	26.37	peak
6	17981.2477	36.96	18.65	55.61	74.00	18.39	peak
		26.95	18.65	45.60	54.00	8.40	average

- Note: 1. Measurement = Reading Level + Correct Factor.
2. If Peak Result complies with AV limit, AV Result is deemed to comply with AV limit.
3. Test setup: RBW: 1 MHz, VBW: 3 MHz, Sweep time: auto.
4. Peak: Peak detector.
5. AVG: VBW refer to section 7.2.
6. For above 3GHz part, filter losses were only considered in the spurious frequency bands and the authorized band was not corrected for HPF losses. The proper operation of the transmitter prior to adding the filter to the measurement chain.
7. Only the worst case emission was recorded, if it complies with the limit, the other emissions deemed to comply with the limit.

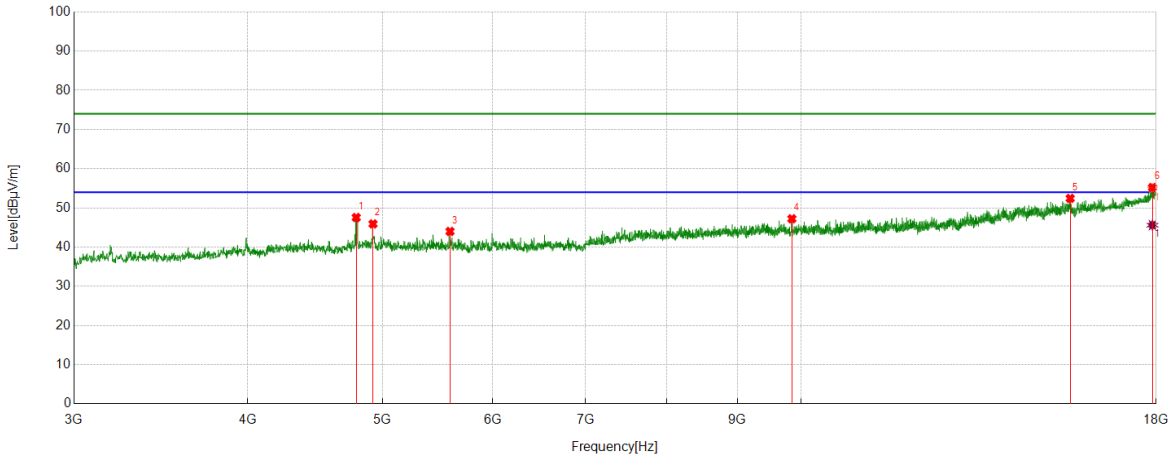
Test Mode	Channel	Polarization	Verdict
11G	LCH	Vertical	PASS



No.	Frequency	Reading Level	Correct Factor	Result	Limit	Margin	Remark
	(MHz)	(dBuV)	(dB/m)	(dBuV/m)	(dBuV/m)	(dB)	
1	4796.4746	49.80	-3.64	46.16	74.00	27.84	peak
2	8008.7511	43.17	1.62	44.79	74.00	29.21	peak
3	9647.706	45.34	3.73	49.07	74.00	24.93	peak
4	11506.0633	41.81	6.30	48.11	74.00	25.89	peak
5	14397.6747	40.72	11.57	52.29	74.00	21.71	peak
6	17924.9906	36.36	18.71	55.07	74.00	18.93	peak
		26.71	18.71	45.42	54.00	8.58	average

- Note: 1. Measurement = Reading Level + Correct Factor.
2. If Peak Result complies with AV limit, AV Result is deemed to comply with AV limit.
3. Test setup: RBW: 1 MHz, VBW: 3 MHz, Sweep time: auto.
4. Peak: Peak detector.
5. AVG: VBW refer to section 7.2.
6. For above 3GHz part, filter losses were only considered in the spurious frequency bands and the authorized band was not corrected for HPF losses. The proper operation of the transmitter prior to adding the filter to the measurement chain.
7. Only the worst case emission was recorded, if it complies with the limit, the other emissions deemed to comply with the limit.

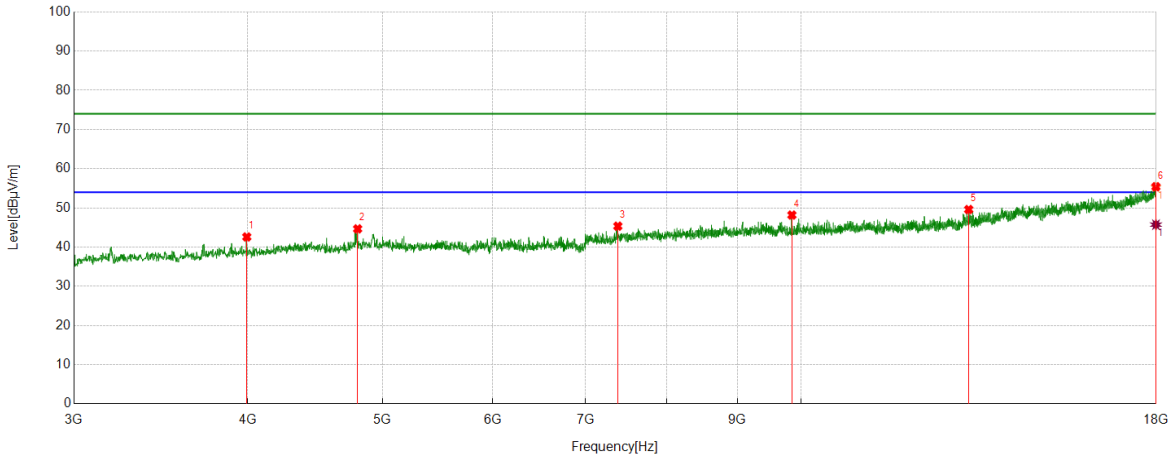
Test Mode	Channel	Polarization	Verdict
11G	MCH	Horizontal	PASS



No.	Frequency	Reading Level	Correct Factor	Result	Limit	Margin	Remark
	(MHz)	(dBuV)	(dB/m)	(dBuV/m)	(dBuV/m)	(dB)	
1	4787.0984	51.08	-3.53	47.55	74.00	26.45	peak
2	4922.1153	49.80	-3.89	45.91	74.00	28.09	peak
3	5591.5739	46.95	-2.95	44.00	74.00	30.00	peak
4	9848.356	43.59	3.64	47.23	74.00	26.77	peak
5	15612.8266	38.98	13.45	52.43	74.00	21.57	peak
6	17891.2364	35.95	19.25	55.20	74.00	18.80	peak
		26.35	19.25	45.60	54.00	8.40	average

- Note: 1. Measurement = Reading Level + Correct Factor.
2. If Peak Result complies with AV limit, AV Result is deemed to comply with AV limit.
3. Test setup: RBW: 1 MHz, VBW: 3 MHz, Sweep time: auto.
4. Peak: Peak detector.
5. AVG: VBW refer to section 7.2.
6. For above 3GHz part, filter losses were only considered in the spurious frequency bands and the authorized band was not corrected for HPF losses. The proper operation of the transmitter prior to adding the filter to the measurement chain.
7. Only the worst case emission was recorded, if it complies with the limit, the other emissions deemed to comply with the limit.

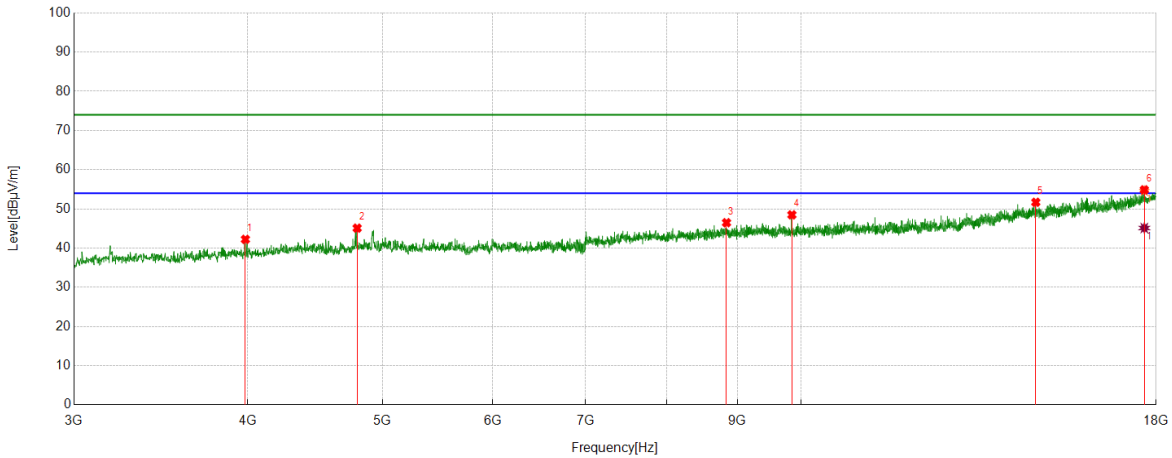
Test Mode	Channel	Polarization	Verdict
11G	MCH	Vertical	PASS



No.	Frequency	Reading Level	Correct Factor	Result	Limit	Margin	Remark
	(MHz)	(dBuV)	(dB/m)	(dBuV/m)	(dBuV/m)	(dB)	
1	3993.8742	49.62	-7.03	42.59	74.00	31.41	peak
2	4798.3498	48.36	-3.71	44.65	74.00	29.35	peak
3	7382.4228	45.32	0.02	45.34	74.00	28.66	peak
4	9848.356	44.53	3.64	48.17	74.00	25.83	peak
5	13197.5247	41.56	8.03	49.59	74.00	24.41	peak
6	17994.3743	36.74	18.66	55.40	74.00	18.60	peak
		27.06	18.66	45.72	54.00	8.28	average

- Note: 1. Measurement = Reading Level + Correct Factor.
2. If Peak Result complies with AV limit, AV Result is deemed to comply with AV limit.
3. Test setup: RBW: 1 MHz, VBW: 3 MHz, Sweep time: auto.
4. Peak: Peak detector.
5. AVG: VBW refer to section 7.2.
6. For above 3GHz part, filter losses were only considered in the spurious frequency bands and the authorized band was not corrected for HPF losses. The proper operation of the transmitter prior to adding the filter to the measurement chain.
7. Only the worst case emission was recorded, if it complies with the limit, the other emissions deemed to comply with the limit.

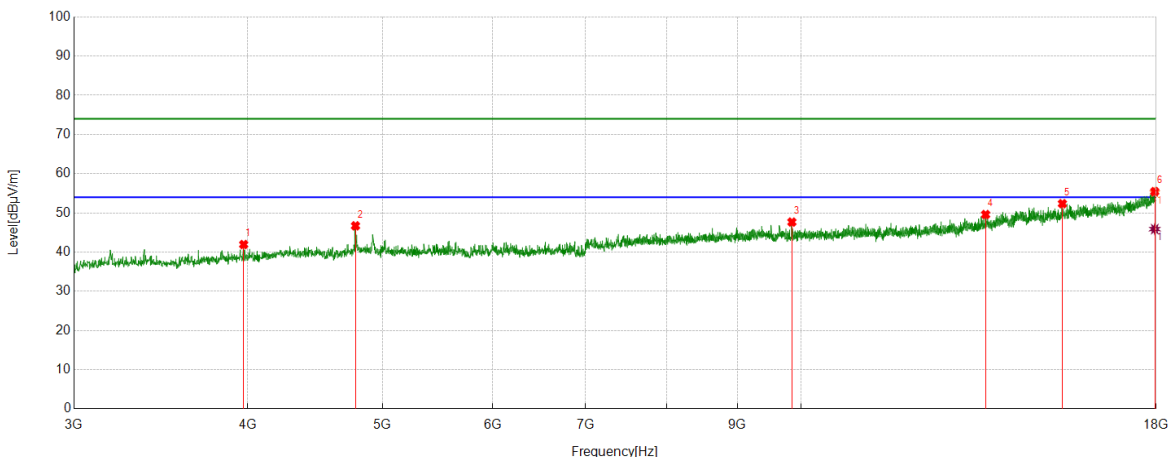
Test Mode	Channel	Polarization	Verdict
11G	HCH	Horizontal	PASS



No.	Frequency	Reading Level	Correct Factor	Result	Limit	Margin	Remark
	(MHz)	(dBuV)	(dB/m)	(dBuV/m)	(dBuV/m)	(dB)	
1	3984.4981	49.13	-6.90	42.23	74.00	31.77	peak
2	4794.5993	48.68	-3.59	45.09	74.00	28.91	peak
3	8837.6047	43.93	2.55	46.48	74.00	27.52	peak
4	9848.356	44.84	3.64	48.48	74.00	25.52	peak
5	14748.3435	40.42	11.27	51.69	74.00	22.31	peak
6	17651.2064	37.13	17.73	54.86	74.00	19.14	peak
		27.39	17.73	45.12	54.00	8.88	average

- Note: 1. Measurement = Reading Level + Correct Factor.
2. If Peak Result complies with AV limit, AV Result is deemed to comply with AV limit.
3. Test setup: RBW: 1 MHz, VBW: 3 MHz, Sweep time: auto.
4. Peak: Peak detector.
5. AVG: VBW refer to section 7.2.
6. For above 3GHz part, filter losses were only considered in the spurious frequency bands and the authorized band was not corrected for HPF losses. The proper operation of the transmitter prior to adding the filter to the measurement chain.
7. Only the worst case emission was recorded, if it complies with the limit, the other emissions deemed to comply with the limit.

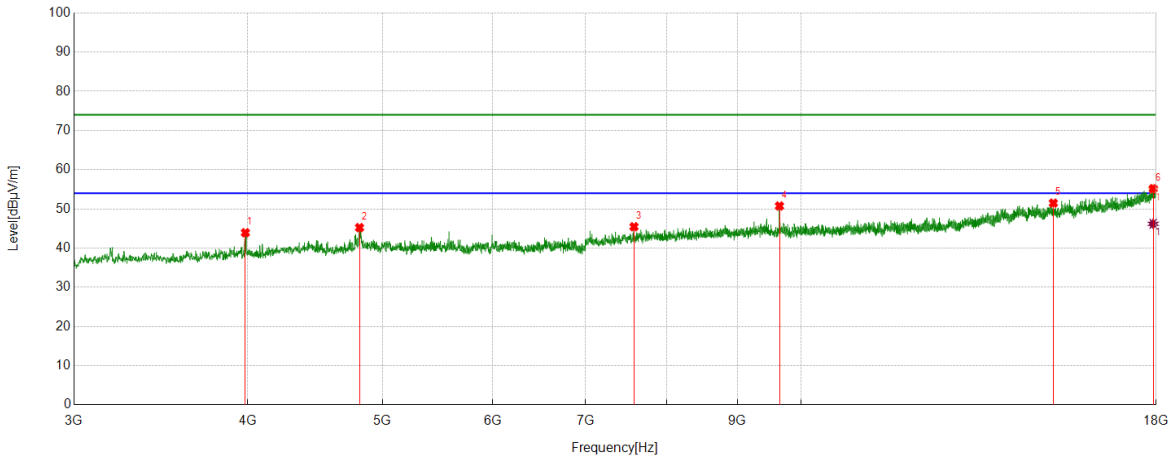
Test Mode	Channel	Polarization	Verdict
11G	HCH	Vertical	PASS



No.	Frequency	Reading Level	Correct Factor	Result	Limit	Margin	Remark
	(MHz)	(dBuV)	(dB/m)	(dBuV/m)	(dBuV/m)	(dB)	
1	3973.2467	48.43	-6.50	41.93	74.00	32.07	peak
2	4781.4727	50.40	-3.70	46.70	74.00	27.30	peak
3	9848.356	44.02	3.64	47.66	74.00	26.34	peak
4	13572.5716	40.34	9.24	49.58	74.00	24.42	peak
5	15412.1765	39.25	13.10	52.35	74.00	21.65	peak
6	17958.7448	36.99	18.45	55.44	74.00	18.56	peak
		27.42	18.45	45.87	54.00	8.13	average

- Note: 1. Measurement = Reading Level + Correct Factor.
2. If Peak Result complies with AV limit, AV Result is deemed to comply with AV limit.
3. Test setup: RBW: 1 MHz, VBW: 3 MHz, Sweep time: auto.
4. Peak: Peak detector.
5. AVG: VBW refer to section 7.2.
6. For above 3GHz part, filter losses were only considered in the spurious frequency bands and the authorized band was not corrected for HPF losses. The proper operation of the transmitter prior to adding the filter to the measurement chain.
7. Only the worst case emission was recorded, if it complies with the limit, the other emissions deemed to comply with the limit.

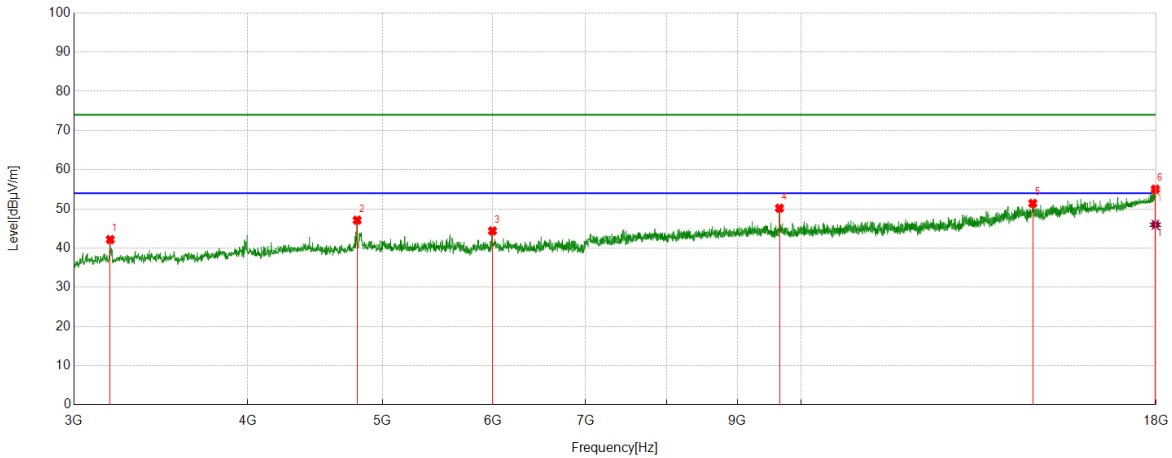
Test Mode	Channel	Polarization	Verdict
11N HT20	LCH	Horizontal	PASS



No.	Frequency (MHz)	Reading Level (dBuV)	Correct Factor (dB/m)	Result (dBuV/m)	Limit (dBuV/m)	Margin (dB)	Remark
1	3984.4981	50.83	-6.90	43.93	74.00	30.07	peak
2	4813.3517	49.35	-4.12	45.23	74.00	28.77	peak
3	7583.0729	44.56	0.89	45.45	74.00	28.55	peak
4	9647.706	47.01	3.73	50.74	74.00	23.26	peak
5	15183.3979	39.07	12.41	51.48	74.00	22.52	peak
6	17913.7392	36.25	18.92	55.17	74.00	18.83	peak
		27.27	18.92	46.19	54.00	7.81	average

- Note: 1. Measurement = Reading Level + Correct Factor.
2. If Peak Result complies with AV limit, AV Result is deemed to comply with AV limit.
3. Test setup: RBW: 1 MHz, VBW: 3 MHz, Sweep time: auto.
4. Peak: Peak detector.
5. AVG: VBW refer to section 7.2.
6. For above 3GHz part, filter losses were only considered in the spurious frequency bands and the authorized band was not corrected for HPF losses. The proper operation of the transmitter prior to adding the filter to the measurement chain.
7. Only the worst case emission was recorded, if it complies with the limit, the other emissions deemed to comply with the limit.

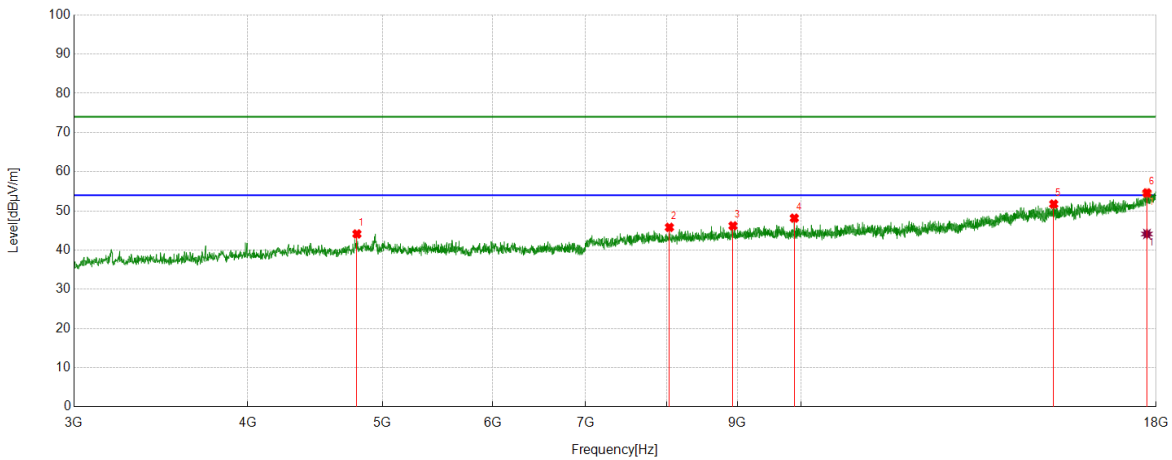
Test Mode	Channel	Polarization	Verdict
11N HT20	LCH	Vertical	PASS



No.	Frequency (MHz)	Reading Level (dBuV)	Correct Factor (dB/m)	Result (dBuV/m)	Limit (dBuV/m)	Margin (dB)	Remark
1	3185.6482	52.07	-9.89	42.18	74.00	31.82	peak
2	4794.5993	50.71	-3.59	47.12	74.00	26.88	peak
3	5998.4998	46.86	-2.47	44.39	74.00	29.61	peak
4	9647.706	46.45	3.73	50.18	74.00	23.82	peak
5	14675.2094	39.50	11.92	51.42	74.00	22.58	peak
6	17977.4972	36.36	18.67	55.03	74.00	18.97	peak
		27.29	18.67	45.96	54.00	8.04	average

- Note: 1. Measurement = Reading Level + Correct Factor.
2. If Peak Result complies with AV limit, AV Result is deemed to comply with AV limit.
3. Test setup: RBW: 1 MHz, VBW: 3 MHz, Sweep time: auto.
4. Peak: Peak detector.
5. AVG: VBW refer to section 7.2.
6. For above 3GHz part, filter losses were only considered in the spurious frequency bands and the authorized band was not corrected for HPF losses. The proper operation of the transmitter prior to adding the filter to the measurement chain.
7. Only the worst case emission was recorded, if it complies with the limit, the other emissions deemed to comply with the limit.

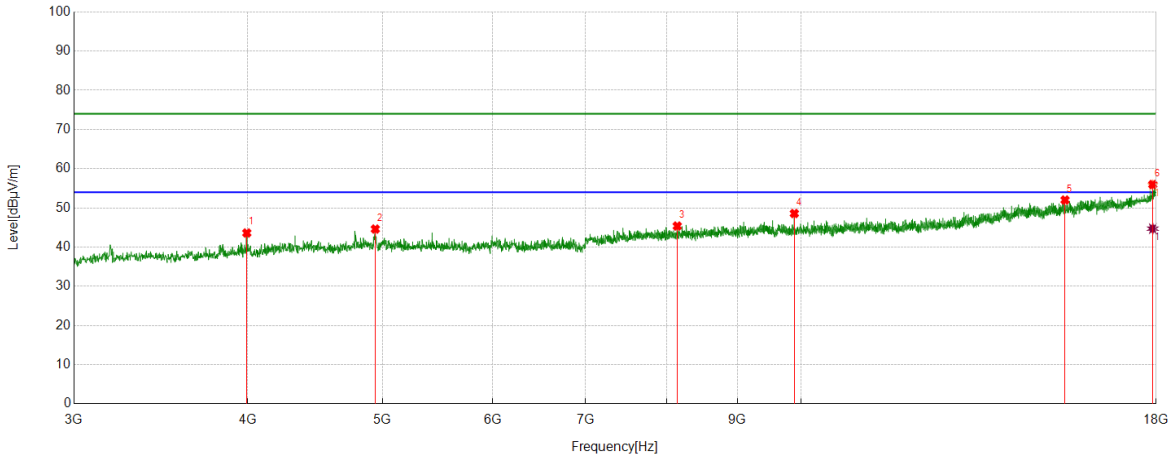
Test Mode	Channel	Polarization	Verdict
11N HT20	MCH	Horizontal	PASS



No.	Frequency	Reading Level	Correct Factor	Result	Limit	Margin	Remark
	(MHz)	(dBuV)	(dB/m)	(dBuV/m)	(dBuV/m)	(dB)	
1	4792.7241	47.65	-3.53	44.12	74.00	29.88	peak
2	8040.6301	43.51	2.29	45.80	74.00	28.20	peak
3	8933.2417	43.47	2.72	46.19	74.00	27.81	peak
4	9887.736	43.86	4.29	48.15	74.00	25.85	peak
5	15192.7741	39.22	12.52	51.74	74.00	22.26	peak
6	17728.091	37.01	17.58	54.59	74.00	19.41	peak
		26.53	17.58	44.11	54.00	9.89	average

- Note: 1. Measurement = Reading Level + Correct Factor.
2. If Peak Result complies with AV limit, AV Result is deemed to comply with AV limit.
3. Test setup: RBW: 1 MHz, VBW: 3 MHz, Sweep time: auto.
4. Peak: Peak detector.
5. AVG: VBW refer to section 7.2.
6. For above 3GHz part, filter losses were only considered in the spurious frequency bands and the authorized band was not corrected for HPF losses. The proper operation of the transmitter prior to adding the filter to the measurement chain.
7. Only the worst case emission was recorded, if it complies with the limit, the other emissions deemed to comply with the limit.

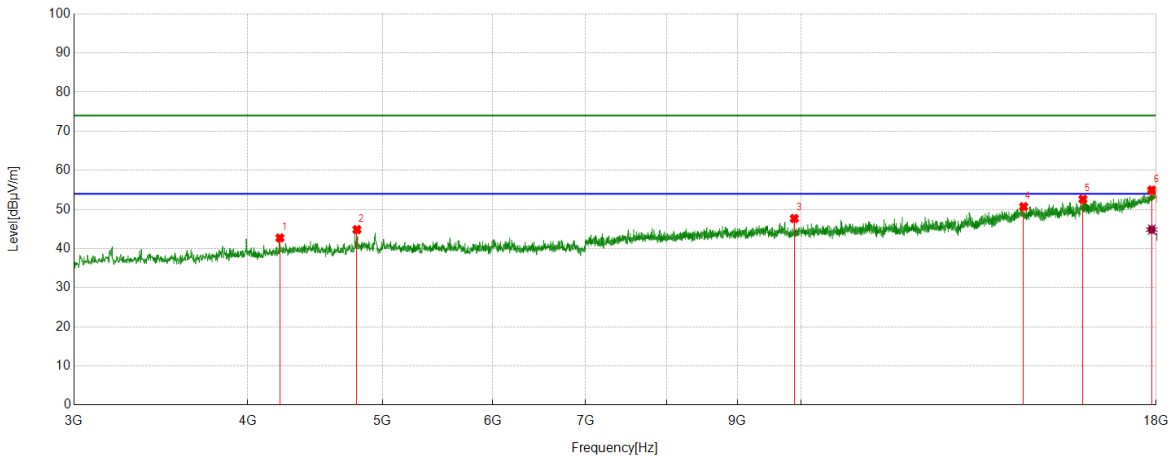
Test Mode	Channel	Polarization	Verdict
11N HT20	MCH	Vertical	PASS



No.	Frequency	Reading Level	Correct Factor	Result	Limit	Margin	Remark
	(MHz)	(dBuV)	(dB/m)	(dBuV/m)	(dBuV/m)	(dB)	
1	3993.8742	50.63	-7.03	43.60	74.00	30.40	peak
2	4940.8676	48.47	-3.87	44.60	74.00	29.40	peak
3	8145.6432	43.74	1.63	45.37	74.00	28.63	peak
4	9887.736	44.28	4.29	48.57	74.00	25.43	peak
5	15479.685	39.47	12.54	52.01	74.00	21.99	peak
6	17900.6126	36.70	19.27	55.97	74.00	18.03	peak
		25.43	19.27	44.70	54.00	9.30	average

- Note: 1. Measurement = Reading Level + Correct Factor.
2. If Peak Result complies with AV limit, AV Result is deemed to comply with AV limit.
3. Test setup: RBW: 1 MHz, VBW: 3 MHz, Sweep time: auto.
4. Peak: Peak detector.
5. AVG: VBW refer to section 7.2.
6. For above 3GHz part, filter losses were only considered in the spurious frequency bands and the authorized band was not corrected for HPF losses. The proper operation of the transmitter prior to adding the filter to the measurement chain.
7. Only the worst case emission was recorded, if it complies with the limit, the other emissions deemed to comply with the limit.

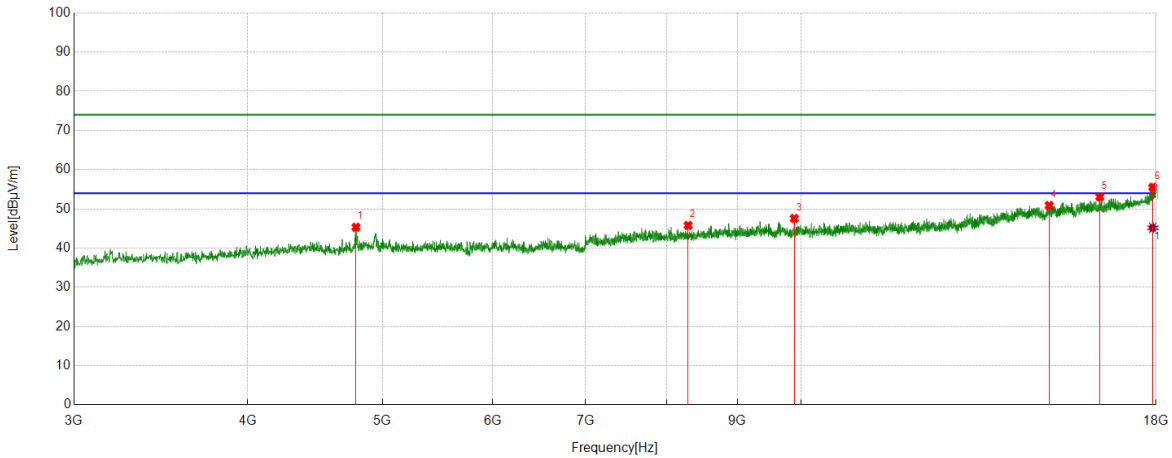
Test Mode	Channel	Polarization	Verdict
11N HT20	HCH	Horizontal	PASS



No.	Frequency	Reading Level	Correct Factor	Result	Limit	Margin	Remark
	(MHz)	(dBuV)	(dB/m)	(dBuV/m)	(dBuV/m)	(dB)	
1	4218.9024	48.59	-5.86	42.73	74.00	31.27	peak
2	4792.7241	48.38	-3.53	44.85	74.00	29.15	peak
3	9887.736	43.40	4.29	47.69	74.00	26.31	peak
4	14453.9317	39.15	11.57	50.72	74.00	23.28	peak
5	15944.7431	38.88	13.74	52.62	74.00	21.38	peak
6	17870.6088	36.23	18.74	54.97	74.00	19.03	peak
		26.12	18.74	44.86	54.00	9.14	average

- Note: 1. Measurement = Reading Level + Correct Factor.
2. If Peak Result complies with AV limit, AV Result is deemed to comply with AV limit.
3. Test setup: RBW: 1 MHz, VBW: 3 MHz, Sweep time: auto.
4. Peak: Peak detector.
5. AVG: VBW refer to section 7.2.
6. For above 3GHz part, filter losses were only considered in the spurious frequency bands and the authorized band was not corrected for HPF losses. The proper operation of the transmitter prior to adding the filter to the measurement chain.
7. Only the worst case emission was recorded, if it complies with the limit, the other emissions deemed to comply with the limit.

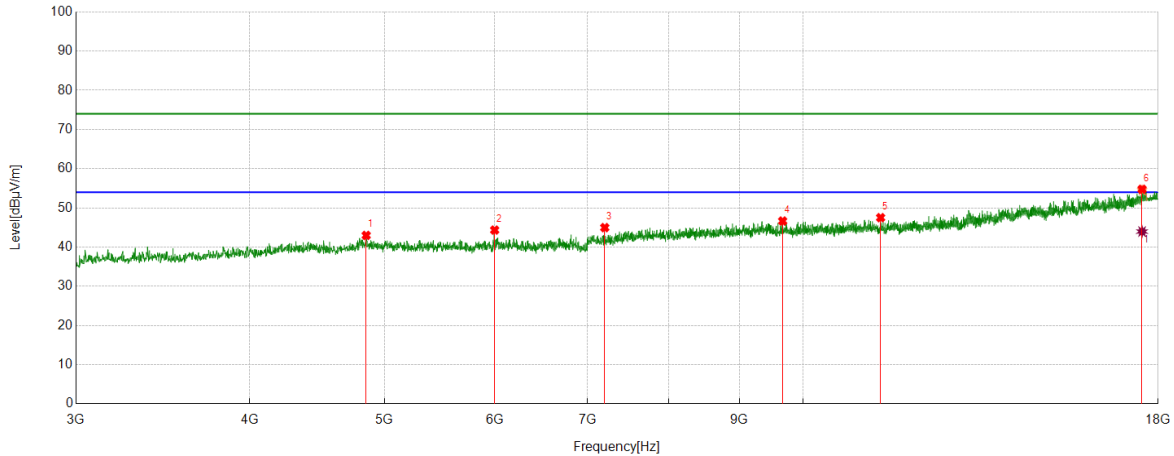
Test Mode	Channel	Polarization	Verdict
11N HT20	HCH	Vertical	PASS



No.	Frequency	Reading Level	Correct Factor	Result	Limit	Margin	Remark
	(MHz)	(dBuV)	(dB/m)	(dBuV/m)	(dBuV/m)	(dB)	
1	4785.2232	48.92	-3.59	45.33	74.00	28.67	peak
2	8293.7867	43.93	1.85	45.78	74.00	28.22	peak
3	9887.736	43.28	4.29	47.57	74.00	26.43	peak
4	15078.3848	38.53	12.35	50.88	74.00	23.12	peak
5	16396.6746	38.88	14.20	53.08	74.00	21.42	peak
6	17904.363	36.33	19.18	55.51	74.00	18.49	peak
		25.99	19.18	45.17	54.00	8.83	average

- Note: 1. Measurement = Reading Level + Correct Factor.
2. If Peak Result complies with AV limit, AV Result is deemed to comply with AV limit.
3. Test setup: RBW: 1 MHz, VBW: 3 MHz, Sweep time: auto.
4. Peak: Peak detector.
5. AVG: VBW refer to section 7.2.
6. For above 3GHz part, filter losses were only considered in the spurious frequency bands and the authorized band was not corrected for HPF losses. The proper operation of the transmitter prior to adding the filter to the measurement chain.
7. Only the worst case emission was recorded, if it complies with the limit, the other emissions deemed to comply with the limit.

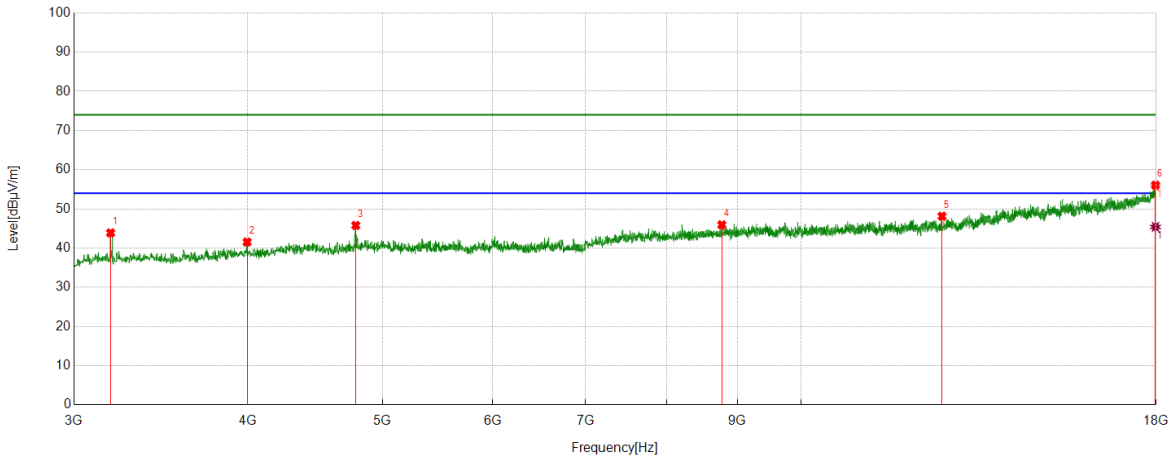
Test Mode	Channel	Polarization	Verdict
11N HT40	LCH	Horizontal	PASS



No.	Frequency	Reading Level	Correct Factor	Result	Limit	Margin	Remark
	(MHz)	(dBuV)	(dB/m)	(dBuV/m)	(dBuV/m)	(dB)	
1	4850.8564	46.53	-3.55	42.98	74.00	31.02	peak
2	6000.375	46.82	-2.48	44.34	74.00	29.66	peak
3	7200.5251	45.13	-0.16	44.97	74.00	29.03	peak
4	9666.4583	43.08	3.57	46.65	74.00	27.35	peak
5	11369.1711	42.14	5.37	47.51	74.00	26.49	peak
6	17527.4409	38.04	16.72	54.76	74.00	19.24	peak
		27.25	16.72	43.97	54.00	10.03	average

- Note: 1. Measurement = Reading Level + Correct Factor.
2. If Peak Result complies with AV limit, AV Result is deemed to comply with AV limit.
3. Test setup: RBW: 1 MHz, VBW: 3 MHz, Sweep time: auto.
4. Peak: Peak detector.
5. AVG: VBW refer to section 7.2.
6. For above 3GHz part, filter losses were only considered in the spurious frequency bands and the authorized band was not corrected for HPF losses. The proper operation of the transmitter prior to adding the filter to the measurement chain.
7. Only the worst case emission was recorded, if it complies with the limit, the other emissions deemed to comply with the limit.

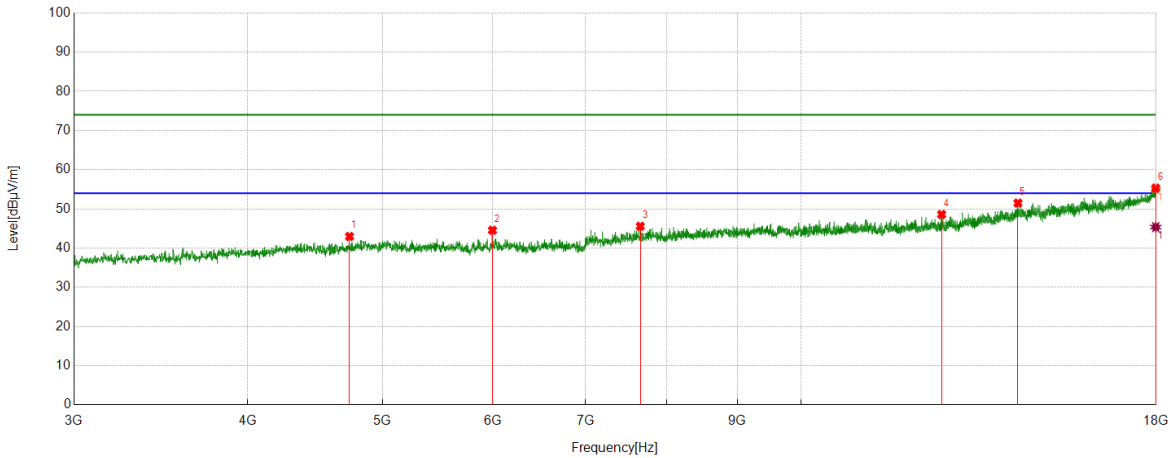
Test Mode	Channel	Polarization	Verdict
11N HT40	LCH	Vertical	PASS



No.	Frequency	Reading Level	Correct Factor	Result	Limit	Margin	Remark
	(MHz)	(dBuV)	(dB/m)	(dBuV/m)	(dBuV/m)	(dB)	
1	3187.5234	53.79	-9.90	43.89	74.00	30.11	peak
2	3995.7495	48.53	-6.98	41.55	74.00	32.45	peak
3	4783.3479	49.43	-3.65	45.78	74.00	28.22	peak
4	8770.0963	43.24	2.70	45.94	74.00	28.06	peak
5	12627.4534	41.06	7.07	48.13	74.00	25.87	peak
6	17981.2477	37.41	18.65	56.06	74.00	17.94	peak
		26.75	18.65	45.40	54.00	8.60	average

- Note: 1. Measurement = Reading Level + Correct Factor.
2. If Peak Result complies with AV limit, AV Result is deemed to comply with AV limit.
3. Test setup: RBW: 1 MHz, VBW: 3 MHz, Sweep time: auto.
4. Peak: Peak detector.
5. AVG: VBW refer to section 7.2.
6. For above 3GHz part, filter losses were only considered in the spurious frequency bands and the authorized band was not corrected for HPF losses. The proper operation of the transmitter prior to adding the filter to the measurement chain.
7. Only the worst case emission was recorded, if it complies with the limit, the other emissions deemed to comply with the limit.

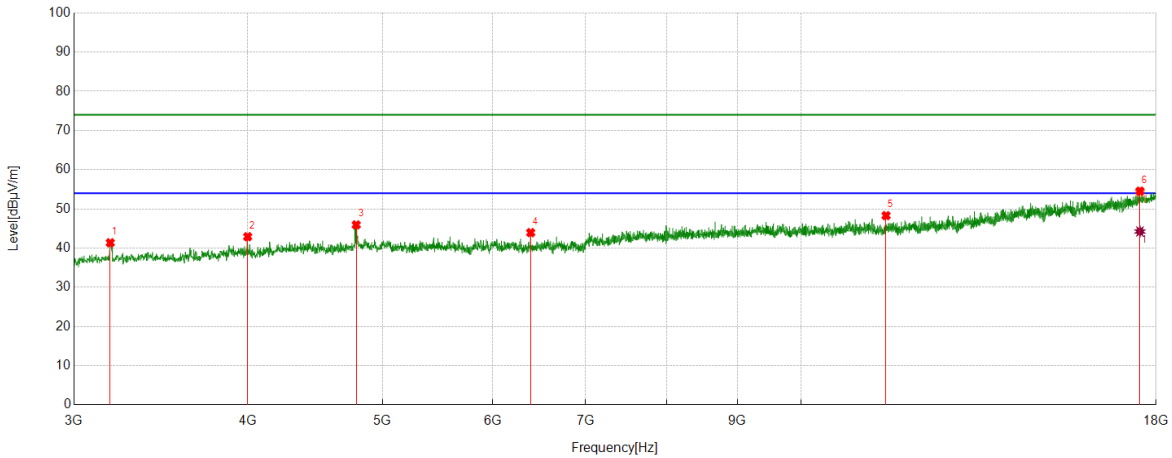
Test Mode	Channel	Polarization	Verdict
11N HT40	MCH	Horizontal	PASS



No.	Frequency	Reading Level	Correct Factor	Result	Limit	Margin	Remark
	(MHz)	(dBuV)	(dB/m)	(dBuV/m)	(dBuV/m)	(dB)	
1	4734.5918	47.25	-4.29	42.96	74.00	31.04	peak
2	5998.4998	47.02	-2.47	44.55	74.00	29.45	peak
3	7661.8327	44.03	1.53	45.56	74.00	28.44	peak
4	12619.9525	41.36	7.22	48.58	74.00	25.42	peak
5	14318.9149	40.35	11.13	51.48	74.00	22.52	peak
6	17988.7486	36.72	18.59	55.31	74.00	18.69	peak
		26.77	18.59	45.36	54.00	8.64	average

- Note: 1. Measurement = Reading Level + Correct Factor.
2. If Peak Result complies with AV limit, AV Result is deemed to comply with AV limit.
3. Test setup: RBW: 1 MHz, VBW: 3 MHz, Sweep time: auto.
4. Peak: Peak detector.
5. AVG: VBW refer to section 7.2.
6. For above 3GHz part, filter losses were only considered in the spurious frequency bands and the authorized band was not corrected for HPF losses. The proper operation of the transmitter prior to adding the filter to the measurement chain.
7. Only the worst case emission was recorded, if it complies with the limit, the other emissions deemed to comply with the limit.

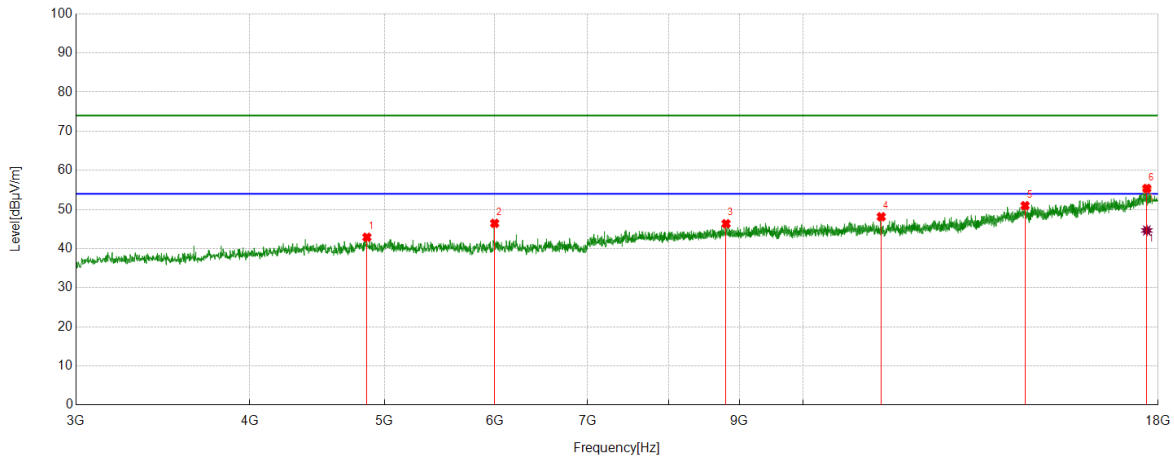
Test Mode	Channel	Polarization	Verdict
11N HT40	MCH	Vertical	PASS



No.	Frequency (MHz)	Reading Level (dBuV)	Correct Factor (dB/m)	Result (dBuV/m)	Limit (dBuV/m)	Margin (dB)	Remark
1	3185.6482	51.25	-9.89	41.36	74.00	32.64	peak
2	3999.4999	49.81	-6.90	42.91	74.00	31.09	peak
3	4787.0984	49.46	-3.53	45.93	74.00	28.07	peak
4	6390.4238	46.03	-2.09	43.94	74.00	30.06	peak
5	11509.8137	41.84	6.44	48.28	74.00	25.72	peak
6	17523.6905	37.60	16.92	54.52	74.00	18.98	peak
		27.32	16.92	44.24	54.00	9.76	average

- Note: 1. Measurement = Reading Level + Correct Factor.
2. If Peak Result complies with AV limit, AV Result is deemed to comply with AV limit.
3. Test setup: RBW: 1 MHz, VBW: 3 MHz, Sweep time: auto.
4. Peak: Peak detector.
5. AVG: VBW refer to section 7.2.
6. For above 3GHz part, filter losses were only considered in the spurious frequency bands and the authorized band was not corrected for HPF losses. The proper operation of the transmitter prior to adding the filter to the measurement chain.
7. Only the worst case emission was recorded, if it complies with the limit, the other emissions deemed to comply with the limit.

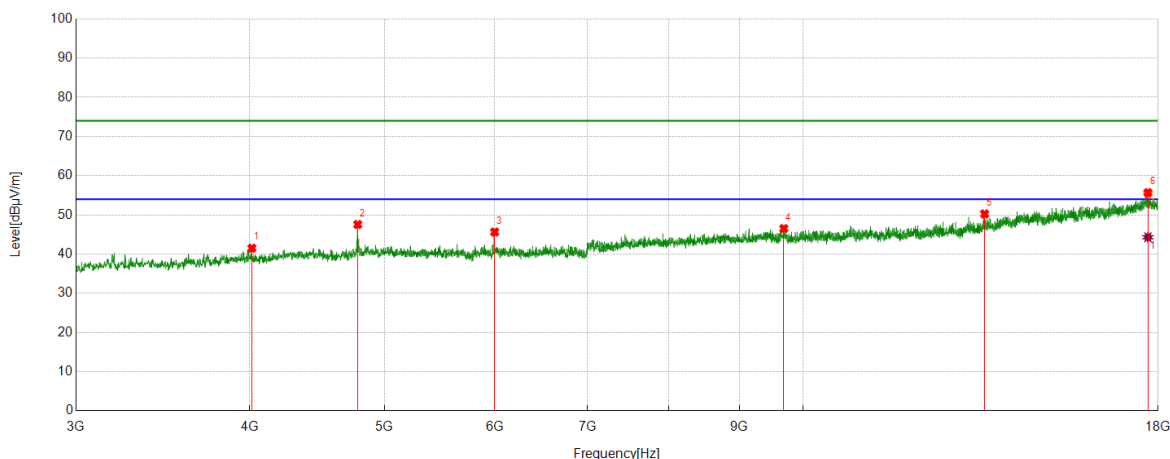
Test Mode	Channel	Polarization	Verdict
11N HT40	HCH	Horizontal	PASS



No.	Frequency (MHz)	Reading Level (dBuV)	Correct Factor (dB/m)	Result (dBuV/m)	Limit (dBuV/m)	Margin (dB)	Remark
1	4856.4821	46.55	-3.65	42.90	74.00	31.10	peak
2	6000.375	48.93	-2.48	46.45	74.00	27.55	peak
3	8801.9752	43.80	2.56	46.36	74.00	27.64	peak
4	11380.4226	42.75	5.38	48.13	74.00	25.87	peak
5	14440.8051	39.31	11.66	50.97	74.00	23.03	peak
6	17666.2083	37.80	17.57	55.37	74.00	18.63	peak
		27.06	17.57	44.63	54.00	9.37	average

- Note: 1. Measurement = Reading Level + Correct Factor.
2. If Peak Result complies with AV limit, AV Result is deemed to comply with AV limit.
3. Test setup: RBW: 1 MHz, VBW: 3 MHz, Sweep time: auto.
4. Peak: Peak detector.
5. AVG: VBW refer to section 7.2.
6. For above 3GHz part, filter losses were only considered in the spurious frequency bands and the authorized band was not corrected for HPF losses. The proper operation of the transmitter prior to adding the filter to the measurement chain.
7. Only the worst case emission was recorded, if it complies with the limit, the other emissions deemed to comply with the limit.

Test Mode	Channel	Polarization	Verdict
11N HT40	HCH	Vertical	PASS



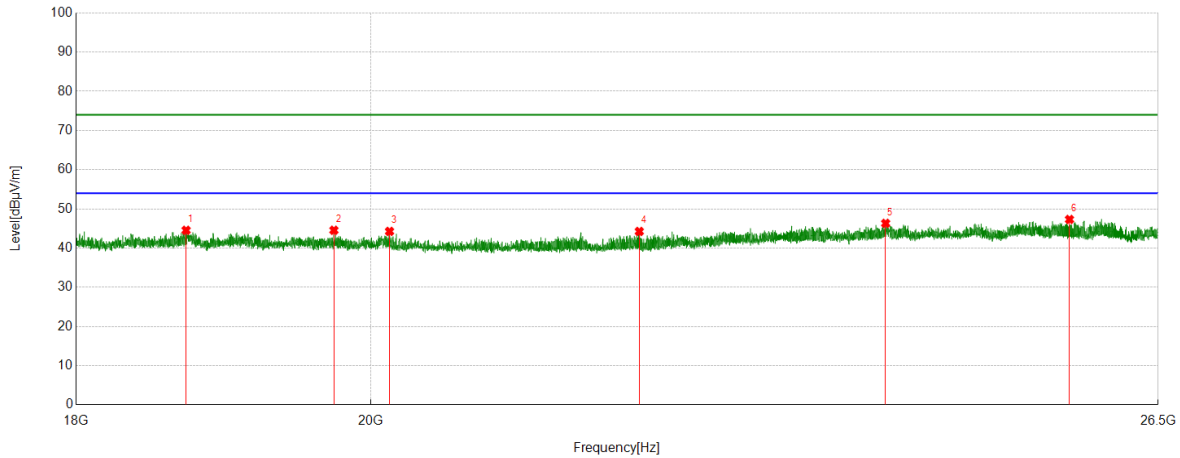
No.	Frequency	Reading Level	Correct Factor	Result	Limit	Margin	Remark
	(MHz)	(dBuV)	(dB/m)	(dBuV/m)	(dBuV/m)	(dB)	
1	4014.5018	48.24	-6.74	41.50	74.00	32.50	peak
2	4783.3479	51.20	-3.65	47.55	74.00	26.45	peak
3	6000.375	48.11	-2.48	45.63	74.00	28.37	peak
4	9685.2107	42.92	3.60	46.52	74.00	27.48	peak
5	13505.0631	41.23	9.02	50.25	74.00	23.75	peak
6	17698.0873	38.06	17.61	55.67	74.00	18.33	peak
		26.69	17.61	44.30	54.00	9.70	average

- Note: 1. Measurement = Reading Level + Correct Factor.
2. If Peak Result complies with AV limit, AV Result is deemed to comply with AV limit.
3. Test setup: RBW: 1 MHz, VBW: 3 MHz, Sweep time: auto.
4. Peak: Peak detector.
5. AVG: VBW refer to section 7.2.
6. For above 3GHz part, filter losses were only considered in the spurious frequency bands and the authorized band was not corrected for HPF losses. The proper operation of the transmitter prior to adding the filter to the measurement chain.
7. Only the worst case emission was recorded, if it complies with the limit, the other emissions deemed to comply with the limit.

Part III: 18GHz~26.5GHz

SPURIOUS EMISSIONS 18GHz TO 26.5GHz (WORST-CASE CONFIGURATION)

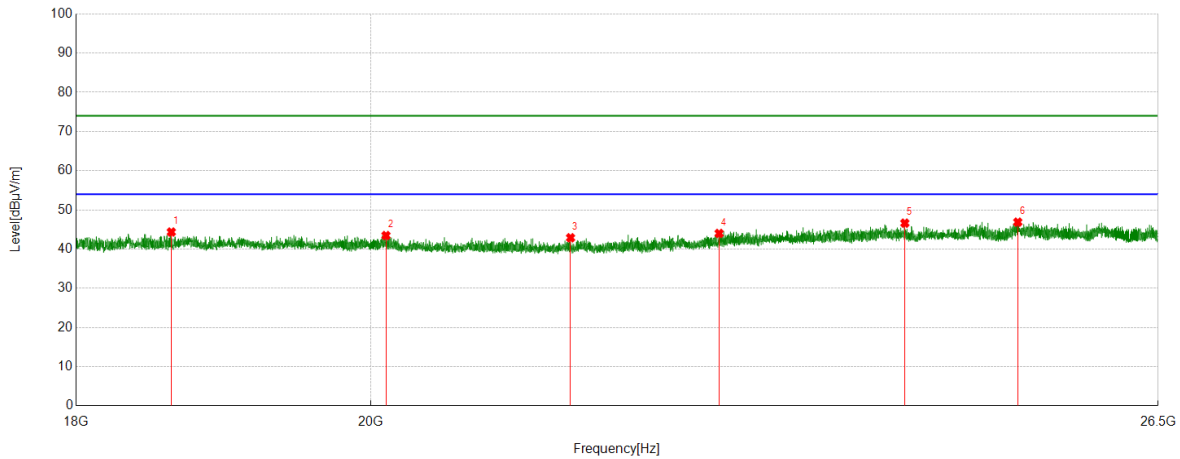
Test Mode	Channel	Polarization	Verdict
11B	MCH	Horizontal	PASS



No.	Frequency (MHz)	Reading Level (dBuV)	Correct Factor (dB/m)	Result (dBuV/m)	Limit (dBuV/m)	Margin (dB)	Remark
1	18722.5723	50.79	-6.25	44.54	74.00	29.46	peak
2	19738.4238	49.93	-5.38	44.55	74.00	29.45	peak
3	20134.5635	49.47	-5.21	44.26	74.00	29.74	peak
4	22014.9515	49.98	-5.73	44.25	74.00	29.75	peak
5	24040.7041	48.96	-2.65	46.31	74.00	27.69	peak
6	25673.7174	50.31	-3.00	47.31	74.00	26.69	peak

Note: 1.If Peak Result complies with AV limit, AV Result is deemed to comply with AV limit.
2. Test setup: RBW: 1 MHz, VBW: 3 MHz, Sweep time: auto.
3. Measurement = Reading Level + Correct Factor.

Test Mode	Channel	Polarization	Verdict
11B	MCH	Vertical	PASS



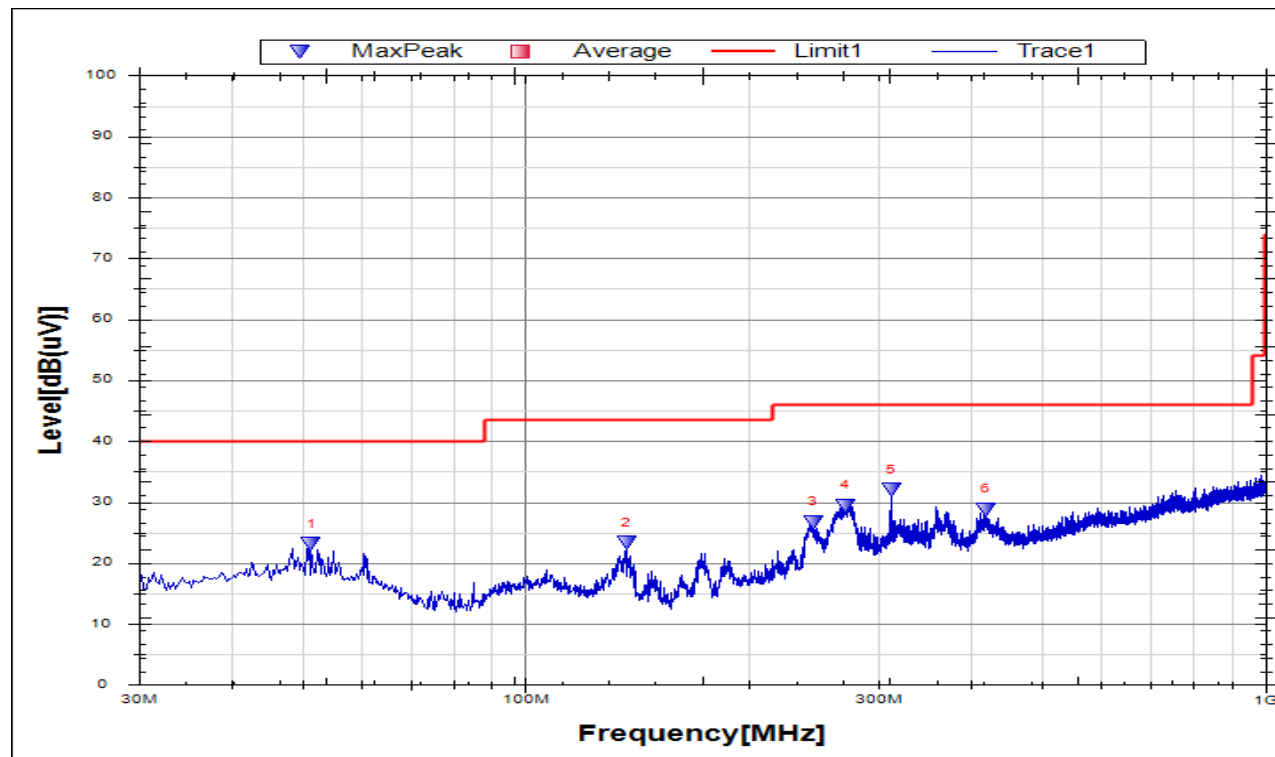
No.	Frequency	Reading Level	Correct Factor	Result	Limit	Margin	Remark
	(MHz)	(dBuV)	(dB/m)	(dBuV/m)	(dBuV/m)	(dB)	
1	18623.9624	50.74	-6.39	44.35	74.00	29.65	peak
2	20109.0609	48.63	-5.17	43.46	74.00	30.54	peak
3	21480.248	48.73	-5.84	42.89	74.00	31.11	peak
4	22651.6652	48.29	-4.29	44.00	74.00	30.00	peak
5	24206.4706	49.42	-2.80	46.62	74.00	27.38	peak
6	25203.6204	50.28	-3.40	46.88	74.00	27.12	peak

Note: 1.If Peak Result complies with AV limit, AV Result is deemed to comply with AV limit.
2. Test setup: RBW: 1 MHz, VBW: 3 MHz, Sweep time: auto.
3. Measurement = Reading Level + Correct Factor.

Part IV: 30MHz~1GHz

SPURIOUS EMISSIONS 30M TO 1GHz (WORST-CASE CONFIGURATION)

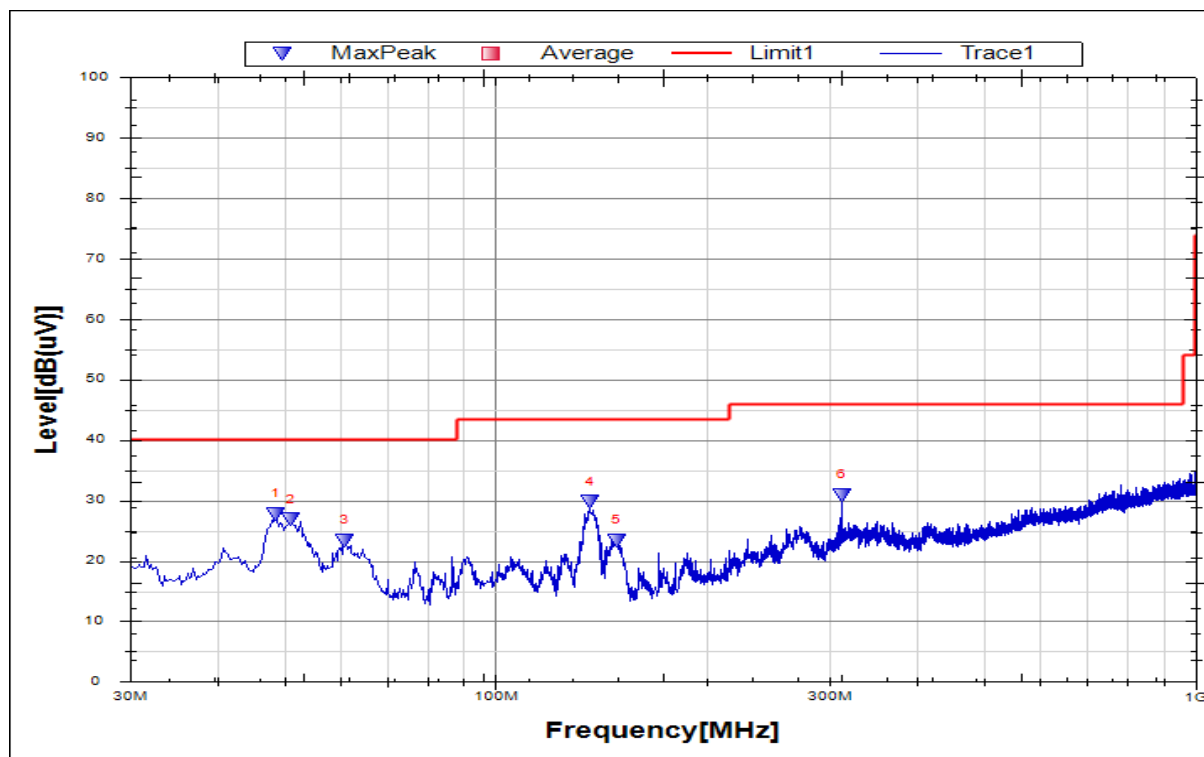
Test Mode	Channel	Polarization	Verdict
11B	MCH	Horizontal	PASS



No.	Frequency (MHz)	Reading Level (dBuV)	Correct Factor (dB/m)	Result (dBuV/m)	Limit (dBuV/m)	Margin (dB)	Remark
1	51.3454	2.23	20.85	23.08	40	16.92	peak
2	136.7268	7.87	15.44	23.31	43.5	20.19	peak
3	244.4239	6.58	20.19	26.77	46	19.23	peak
4	270.1354	8.77	20.71	29.48	46	16.52	peak
5	311.8559	10.34	21.66	32	46	14.00	peak
6	418.5827	4.66	24.09	28.75	46	17.25	peak

Note: 1. If Peak Result complies with QP limit, QP Result is deemed to comply with QP limit.
2. Test setup: RBW: 120 kHz, VBW: 300 kHz, Sweep time: auto.
3. Measurement = Reading Level + Correct Factor.

Test Mode	Channel	Polarization	Verdict
11B	MCH	Vertical	PASS



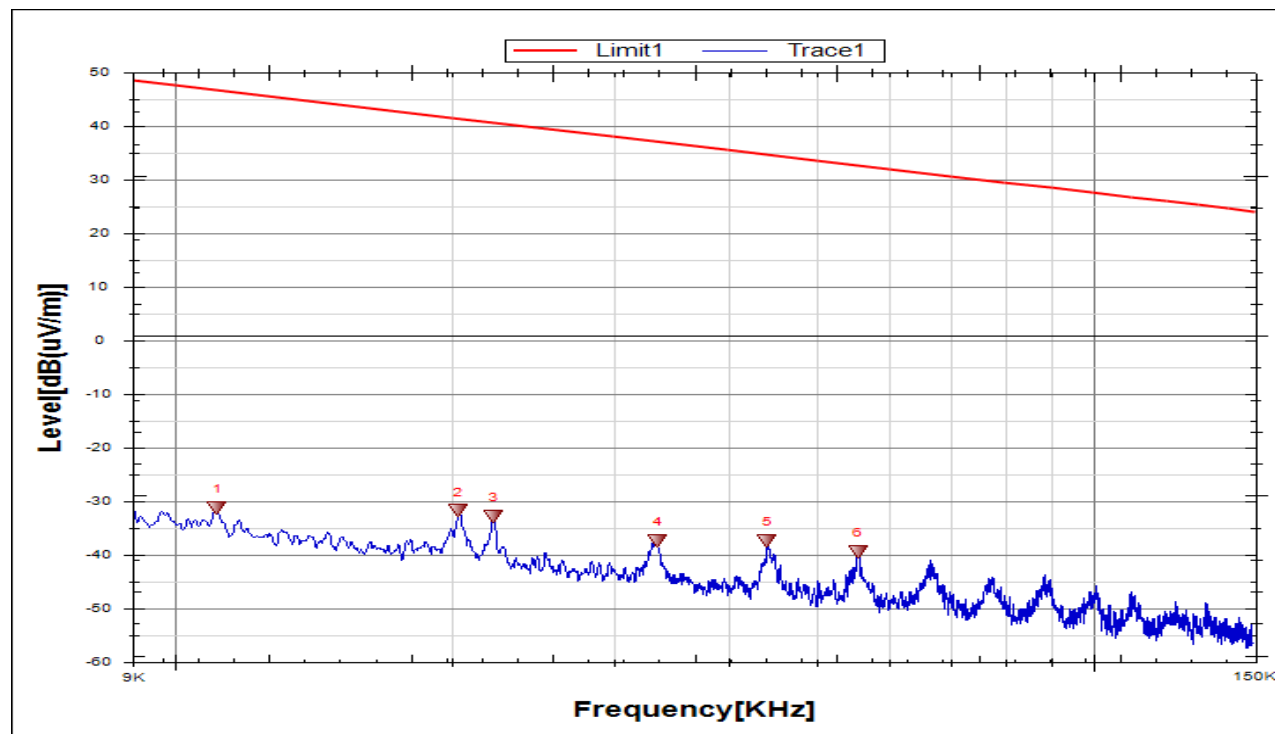
No.	Frequency (MHz)	Reading Level (dBuV)	Correct Factor (dB/m)	Result (dBuV/m)	Limit (dBuV/m)	Margin (dB)	Remark
1	48.4346	6.88	20.86	27.74	40	12.26	peak
2	50.8602	5.92	20.92	26.84	40	13.16	peak
3	60.8052	4.04	19.38	23.42	40	16.58	peak
4	136.2417	14.32	15.47	29.79	43.5	13.71	peak
5	148.6123	8.02	15.37	23.39	43.5	20.11	peak
6	311.8559	9.28	21.66	30.94	46	15.06	peak

Note: 1. If Peak Result complies with QP limit, QP Result is deemed to comply with QP limit.
2. Test setup: RBW: 120 kHz, VBW: 300 kHz, Sweep time: auto.
3. Measurement = Reading Level + Correct Factor.

Part V: 9KHz~30MHz

SPURIOUS EMISSIONS Below 30MHz (WORST CASE CONFIGURATION-FACE ON)

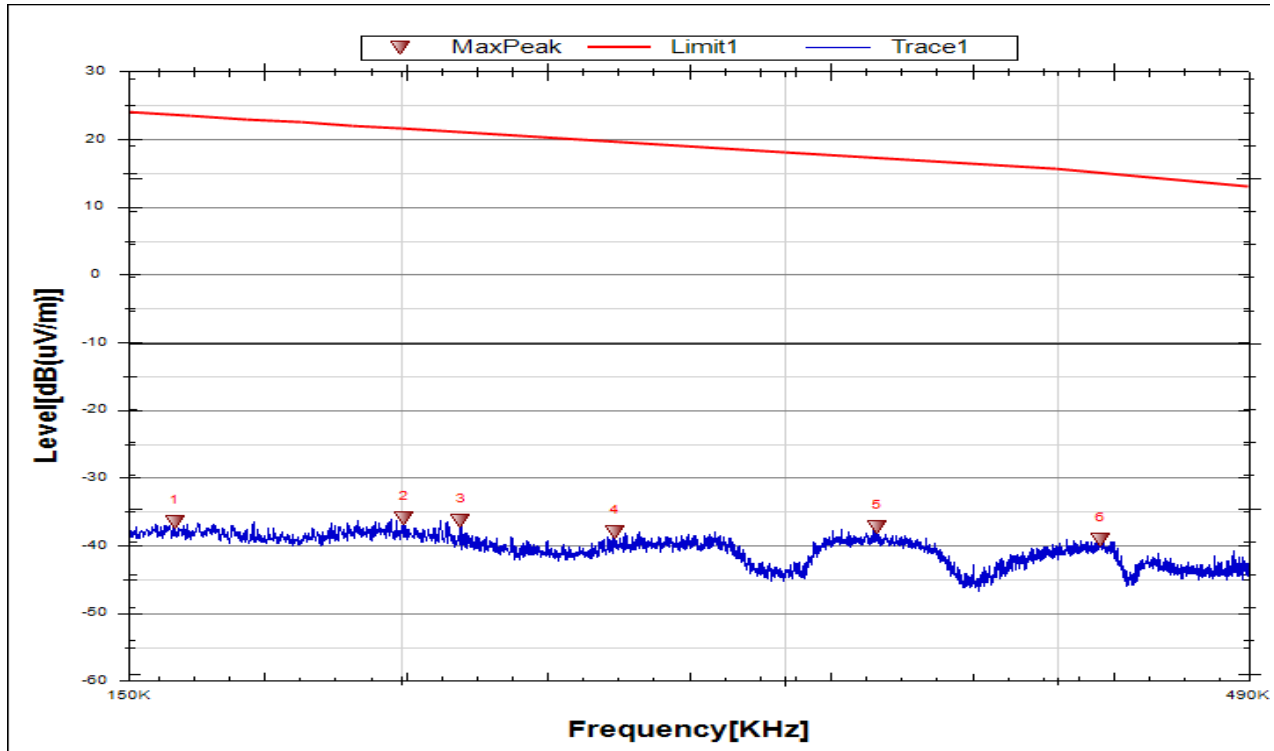
Test Mode	Channel	Frequency Range	Verdict
11B	MCH	9KHz~150KHz	PASS



No.	Frequency (MHz)	Reading Level (dBuV)	Correct Factor (dB/m)	FCC Result (dBuV/m)	FCC Limit (dBuV/m)	IC Result (dBuA/m)	IC Limit (dBuA/m)	Margin (dB)	Remark
1	0.0111	30.7	-61.9	-31.2	46.94	-82.7	-4.56	78.14	peak
2	0.0203	30.08	-61.81	-31.73	41.47	-83.23	-10.03	73.2	peak
3	0.0222	28.97	-61.79	-32.82	40.81	-84.32	-10.69	73.63	peak
4	0.0335	24.39	-61.71	-37.32	37.18	-88.82	-14.32	74.5	peak
5	0.0441	24.45	-61.71	-37.26	34.76	-88.76	-16.74	72.02	peak
6	0.0553	22.37	-61.73	-39.36	32.78	-90.86	-18.72	72.14	peak

- Note: 1. Measurement = Reading Level + Correct Factor.
2. Result 300m= Result 3m-80 dBuV/m
3. If Peak Result complies with AV and QP limit, AV and QP Result are deemed to comply with AV limit.
4. All 3 polarizations(Horizontal, Face-on and Face-off) of the loop antenna had been tested, but only the worst data recorded in the report
5. The limits in CFR 47, Part 15, Subpart C, paragraph 15.209 (a), are identical to those in RSS-GEN Section 8.9, Table 6, since the measurements are performed in terms of magnetic field strength and converted to electric field strength levels (as reported in the table) using the free space impedance of 377Ω. For example, the measurement frequency X KHz resulted in a level of Y dBuV/m, which is equivalent to $Y - 51.5 = Z$ dBuA/m, which has the same margin, W dB, to the corresponding RSS-GEN Table 6 limit as it has to be 15.209(a) limit.

Test Mode	Channel	Frequency Range	Verdict
11B	MCH	150KHz~490Hz	PASS



No.	Frequency (MHz)	Reading Level (dBuV)	Correct Factor (dB/m)	FCC Result (dBuV/m)	FCC Limit (dBuV/m)	IC Result (dBuA/m)	IC Limit (dBuA/m)	Margin (dB)	Remark
1	0.1573	25.38	-61.84	-36.46	23.67	-87.96	-27.83	60.13	peak
2	0.2005	25.94	-61.86	-35.92	21.56	-87.42	-29.94	57.48	peak
3	0.213	25.52	-61.87	-36.35	21.12	-87.85	-30.38	57.47	peak
4	0.2505	23.94	-61.89	-37.95	19.8	-89.45	-31.7	57.75	peak
5	0.3307	24.61	-61.9	-37.29	17.29	-88.79	-34.21	54.58	peak
6	0.4188	22.75	-61.88	-39.13	15.04	-90.63	-36.46	54.17	peak

- Note: 1. Measurement = Reading Level + Correct Factor.
2. Result 300m= Result 3m-80 dBuV/m
3. If Peak Result complies with AV and QP limit, AV and QP Result are deemed to comply with AV limit.
4. All 3 polarizations(Horizontal, Face-on and Face-off) of the loop antenna had been tested, but only the worst data recorded in the report
5. The limits in CFR 47, Part 15, Subpart C, paragraph 15.209 (a), are identical to those in RSS-GEN Section 8.9, Table 6, since the measurements are performed in terms of magnetic field strength and converted to electric field strength levels (as reported in the table) using the free space impedance of 377Ω. For example, the measurement frequency X KHz resulted in a level of Y dBuV/m, which is equivalent to $Y-51.5 = Z$ dBuA/m, which has the same margin, W dB, to the corresponding RSS-GEN Table 6 limit as it has to be 15.209(a) limit.