



User Manual

CONTENTS

IMPORTANT SAFETY INSTRUCTIONS	P01
BATTERY	P02
CAUTIONS	P02
SPECIFICATIONS	P03
PREPARATION	P04
UNBINDING THE CAMERA FROM THE MONITOR	P06
CAMERA SELECTION METHOD	P07
NIGHT VISION	P08
SAFETY PROTECTION	P08
SET UP THE SYSTEM	P09
SET UP THE CAMERA ON THE APP	P10

IMPORTANT SAFETY INSTRUCTIONS

- Ensure adherence to all warnings and instructions marked on the product.
- Adult setup is mandatory.
- The product serves as an aid only and should not replace responsible and proper adult supervision.
- Not designed for use as a medical monitor.
- Avoid usage near water to prevent the risk of electric shock.
- Utilize only the adapters provided to avoid damaging the product.
- Employ only attachments and accessories endorsed by the manufacturer.
- Disconnect from the power source before cleaning. Avoid liquid cleaners; use a dry cloth instead.
- Unplug during prolonged periods of non-use.
- Keep power cords clear of obstructions and ensure they are not a tripping hazard.
- Operate solely with the power source type indicated on the product.
- Avoid placing on unstable surfaces to prevent falls.
- Ensure proper ventilation to avoid overheating. Never cover ventilation slots.
- Do not attempt to disassemble. Contact authorized service facilities for maintenance.
- Supervise children to prevent product tampering.
- Store small, detachable parts away from young children to prevent choking hazards.
- Not for use by individuals with limited physical, sensory, or mental capabilities without proper supervision.

EN

BATTERY

- Use only the specified battery to prevent explosion risks.
- Avoid exposure to extreme temperatures and pressures, which can cause explosions or leaks.
- Do not dispose of the battery in fire or attempt to damage it mechanically.
- Follow proper disposal guidelines for used batteries to minimize environmental harm.

CAUTIONS

- Handle batteries with care to avoid burn, fire, and explosion hazards.
- Protect the product from extreme temperatures, sunlight, and heat sources.
- Prevent strangulation by keeping cords out of children's reach.
- Do not place the camera within or too close to the baby's crib or playpen to avoid suffocation and strangulation risks.
- Install the camera safely away from the crib to prevent injury.
- Be mindful of potential interference from other electronic devices and position the camera unit accordingly.
- Regularly test sound reception for optimal performance.
- Maintain a distance of at least 1.5m/4.9ft between the monitor and camera to prevent microphone feedback.

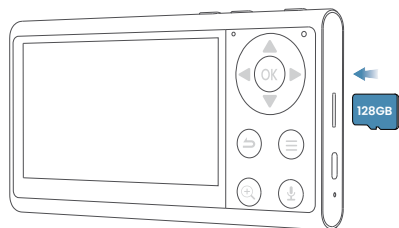
SPECIFICATION

SCREEN SIZE	4.3"
WIFI BAND	905-925MHz
PAN/TILT	355°/100°
TWO-WAY AUDIO	SUPPORTED
NIGHT LIGHT	THREE UNIQUE LIGHTING MODES AVAILABLE
LULLABY	14 LULLABIES VIA APP WITH SD CARD; 3 VIA MONITOR
HUMIDITY& TEMPERATURE DETECTION	SUPPORTED
MOVEMENT DETECTION	SUPPORTED
POWER SUPPLY	DC 5V/1A
LENGTH OF THE POWER CORD	4.9 FT
WORKING TEMP	32°F-104°F
LOCAL STORAGE	MICRO SD CARD (UP TO 128G)

PREPARATION

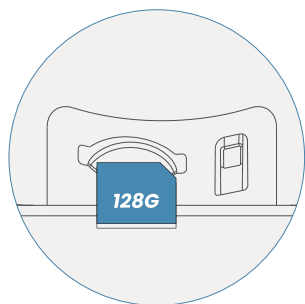
• LOCAL MONITORING

Operates independently of the internet, requiring a Micro SD card (up to 128GB, NOT INCLUDED) for recording and storage—optional if video and image storage isn't needed.



• APP MONITORING

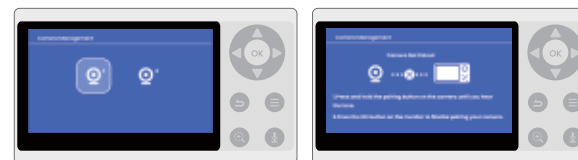
Remote monitoring is enabled through an app, also necessitating a Micro SD card (up to 128GB, NOT INCLUDED) for storing videos and playing lullabies. Using an SD card is optional unless utilizing the specified feature. Alternatively, for video storage, consider subscribing to a cloud storage plan.



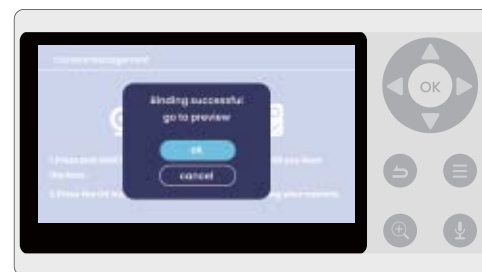
! Note:

If the camera fails to connect automatically, manually establish the connection as follows:




1. On the monitor, press the 'Menu' button (≡).
2. Go to 'Settings' (⚙️) > 'Camera' (📷).
3. Under 'Camera Management,' choose 'Camera 1' or 'Camera 2' to pair.
4. Press and hold the 'Voice Call' button (📞) on the camera until you hear a 'cuckoo' sound.
5. Press 'OK' (OK) on the monitor to complete the connection.

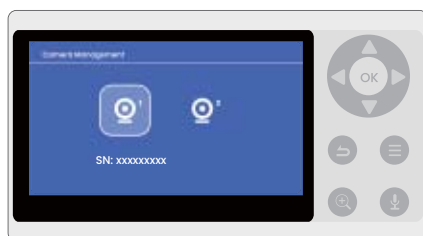


6. A solid blue indicator light on the camera and a success message on the monitor will confirm the connection.

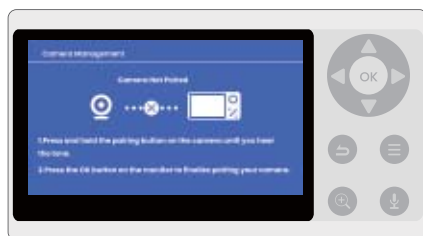


UNBINDING THE CAMERA FROM THE MONITOR

- On the monitor, press the 'Menu' button .
- Navigate to 'Settings'  > 'Camera' .
- In 'Camera Management', select either 'Camera 1' or 'Camera 2' that you wish to unbind.



- Press and hold the 'OK' button on the monitor until you see 'Camera Not Paired' on the screen.




After unbinding, if the camera was not previously connected to the app, it will perform a pan/tilt check after 15 seconds, and its indicator light will start to flash red slowly. If it was already connected to the app, the camera will remain stationary, and the indicator light will stay solid blue.

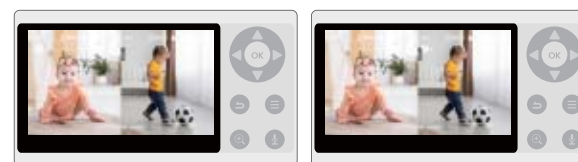
Note:


If you wish to reconnect the camera with the monitor, please follow the steps outlined in 'CONNECTING THE CAMERA TO THE MONITOR'.

CAMERA SELECTION METHOD (FOR DUAL-CAMERA BABY MONITORS ONLY)

The Dual-Camera Baby Monitor supports simultaneous live viewing from both cameras. To zoom in or out on a specific camera, it's necessary to select that camera first.

From the home screen, use the Zoom button  to alternate between Camera 1 and Camera 2 views.



To zoom, select the desired camera by pressing the 'OK' button  on the monitor. This action switches the view to full-screen mode for the selected camera, enabling the zoom function.



Note:

To exit full-screen viewing mode and return to dual-screen mode, press the back button.

SET UP THE CAMERA ON THE APP


• Before starting, please note:

1. Ensure the camera is on and press the 'RESET' button for 5 seconds until the indicator light flashes red, signaling it's ready for WiFi connection.
2. The monitor will be offline during WiFi setup, resuming once the app connects to the camera successfully.
3. Confirm 'Elemage Cam' app is downloaded.
4. Select the correct device type and model when adding a device.
5. Check for a stable network and keep the camera and mobile device close to the router during setup.
6. Please enter the correct password according to the instruction manual, ensuring it contains between 8 and 32 characters for a seamless Wi-Fi connection.
7. Avoid using emojis, special characters, or symbols in your WiFi name and password. Public networks (like in apartments, subways, airports, hotels, etc.) are not recommended.
8. Networks requiring web authentication are not supported.
9. WiFi networks with hidden hotspot names are not supported; ensure your hotspot name is visible.
10. VPNs or Proxy Servers are not compatible.

I. METHOD 1 CONNECT VIA BLUETOOTH ENABLED (RECOMMENDED)

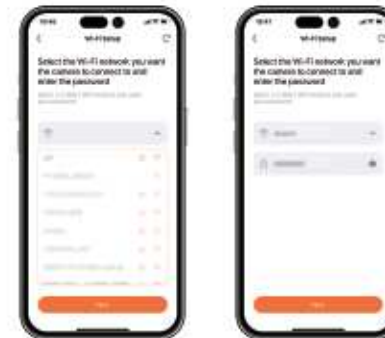
! Note:

Please allow the app to access your Bluetooth and Location services to guarantee a successful connection.

1. On the 'Home' page, tap 'Add' or  in the upper right corner to add a device.
2. Grant the app permission to access your Bluetooth.
3. Locate your device's serial number in the list. (The serial number is located on the sticker affixed to the camera.)



4. Select the same WiFi network your phone is connected to and enter the correct password.
5. Grant the app permission to access your Location.
6. Wait to hear a 'cuckoo' sound, signaling the start of the connection process. Then, ensure that the indicator light changes to a steady blue, which signifies the setup has been successful. Afterward, press 'Next' to assign a name to your camera.





⚠ Caution:

During the Wi-Fi setup, if the app displays a page indicating a connection failure, tap 'Re-add' in the upper left corner. Then, press and hold the 'Reset' button until you hear a 'cuckoo' sound. Ensure the indicator light changes to slow red flashes. Follow the instructions in the 'METHOD 1: CONNECT VIA BLUETOOTH ENABLED (RECOMMENDED)' section to re-add the camera to the app. Alternatively, tap the 'Other Methods' button to try a different method as outlined in 'METHOD 2: SCAN QR CODE', which is detailed in the 'IMPORTANT TIPS' section for further guidance.



NOTICE

FCC Statement:

This device complies with Part 15 of the FCC Rules. Operation is subject to the following two conditions: (1) This device may not cause harmful interference, and (2) this device must accept any interference received, including interference that may cause undesired operation.

⚠ Note:

This equipment has been tested and found to comply with the limits for a Class B digital device, pursuant to Part 15 of the FCC Rules. These limits are designed to provide reasonable protection against harmful interference in a residential installation. This equipment generates, uses, and can radiate radio frequency energy and, if not installed and used in accordance with the instructions, may cause harmful interference to radio communications.

However, there is no guarantee that interference will not occur in a particular installation. If this equipment does cause harmful interference to radio or television reception, which can be determined by turning the equipment off and on, the user is encouraged to try to correct the interference by one or more of the following measures:

- Reorient or relocate the receiving antenna.
 - Increase the separation between the equipment and receiver.
 - Connect the equipment into an outlet on a circuit different from that to which the receiver is connected.
 - Consult the dealer or an experienced radio/TV technician for help.
- Changes or modifications not expressly approved by the party responsible for compliance could void the user's authority to operate the equipment.

Monitor: SAR statement

This device meets the government's requirements for exposure to radio waves. This device is designed and manufactured not to exceed the emission limits for exposure to radio frequency (RF) energy set by the Federal Communications Commission of the U.S. Government. The SAR limit set by the FCC is 1.6W/Kg. For body-worn operation, this device has been tested and meets the FCC RF exposure guidelines for use with an accessory that contains no metal and positions the device a minimum of 0mm from the body. RF exposure compliance with any body-worn accessory that contains metal was not tested and certified. and use of such body-worn accessory should be avoided. Accessory available in market and must be used to keep use distance 0mm from EUT to body-worn operation.

Camera: RF Exposure Statement

To maintain compliance with FCC's RF Exposure guidelines, This equipment should be installed and operated with minimum distance of 20cm the radiator your body. This device and its antenna(s) must not be co-located or operation in conjunction with any other antenna or transmitter.



CET PRODUCT SERVICE SP. Z O.O.
Ul. Długa 33 102
Zgierz 95-100 Polen
Tel: +49 1734543507
Email: info@cetproduct.com

FCC ID: 2AZL7-ZY-BB1 (Camera)
FCC ID: 2AZL7-ZY-BM1 (Monitor)
Made in China

Manufacturer: Shenzhen CTV
Int Cloud Technology Co., Ltd
Address: 501, Building A,
Debaoli Industrial Park,
ShangxueTechnology City,
Xinxue Community, Bantian
Street, Longgang District,
Shenzhen, China



IC warning:

This device contains licence-exempt transmitter(s)/receiver(s) that comply with Innovation Science and Economic Development Canada's licence-exempt RSS(s). Operation is subject to the following two conditions:

- 1) this device may not cause interference and
- 2) this device must accept any interference, including interference that may cause undesired operation of the device.

Monitor:

Radiation Exposure: This equipment complies with Canada radiation exposure limits set forth for an uncontrolled environment; To maintain compliance with IC's RF Exposure guidelines, This device and its antenna(s) must not be co-located or operation in conjunction with any other antenna or transmitter.

Camera:

Radiation Exposure: This equipment complies with Canada radiation exposure limits set forth for an uncontrolled environment; To maintain compliance with IC's RF Exposure guidelines, This equipment should be installed and operated with minimum distance of 20cm the radiator your body. This device and its antenna(s) must not be co-located or operation in conjunction with any other antenna or transmitter.

Déclaration de l'ISED Canada:

Cet appareil contient des transmetteur(s) / récepteur(s) sans licence / conformes à l'innovation RSS exemptes de licence de Sciences et Développement économique Canada.

L'opération est sous réserve des deux conditions suivantes :

- 1) cet appareil ne peut pas causer d'interférences et
- 2) ce dispositif doit accepter toute interférence, y compris peut provoquer le fonctionnement indésirable de l'appareil.

Monitor:

Exposition aux rayonnements : Cet équipement est conforme aux radiations du Canada limites d'exposition pour un environnement incontrôlé noncé d'exposition RF Pour maintenir le respect des guides d'exposition RF d'IC, Cet appareil et ses antennes ne doivent pas être co-localisé ou en opération en conjonction avec toute autre antenne ou émetteur.

Camera:

Exposition aux rayonnements : Cet équipement est conforme aux radiations du Canada limites d'exposition pour un environnement incontrôlé noncé d'exposition RF Pour maintenir le respect des guides d'exposition RF d'IC, cquipment doit être installé et actionné avec une distance minimale de 20cm le radiateur de votre corps. Cet appareil et ses antennes ne doivent pas être co-localisé ou en opération en conjonction avec toute autre antenne ou émetteur.