


## Warranty Registration

|                 |  |           |  |
|-----------------|--|-----------|--|
| Product name    |  | Model No. |  |
| Date Purchased  |  |           |  |
| Customer's name |  | Phone     |  |
| Address         |  |           |  |
| Agents' name    |  | Phone     |  |
| Address         |  |           |  |

## Warnings !

1. Do not assemble or alter any part of the Flash Memory Bar that is not described in this manual.
2. Do not allow the device to come into contact with water or other liquids.
3. Do not handle the device to do the plug and unplug operation if your hands are wet.
4. Do not place the product near a heat source or expose them to direct flame or heat.
5. Never place the device in close to equipment generating strong electromagnetic fields.



The image shows the cover of a 'Flash Memory Bar User's Guide'. At the top left, there is a 'USB' logo. The title 'Flash Memory Bar' is prominently displayed in a large, stylized font, with 'Flash' in red and 'Memory Bar' in black. Below the title, 'User's Guide' is written in a smaller, black font. A large, stylized hand is shown holding a black USB flash drive. The drive has 'Flash Memory Bar' written on it. Overlaid on the hand and drive is a yellow banner with black text that reads 'Over 10 years!' and 'More than 1 Million Times!'. At the bottom, there are three blue ovals containing the words 'Simply!', 'Efficiently!', and 'Powerfully!' in white, italicized font. The background is a collage of various electronic components and circuitry.

USB

# Flash Memory Bar

## User's Guide

Over 10 years!  
More than 1 Million Times!

Flash Memory Bar

*Simply!*

*Efficiently!*

*Powerfully!*

## Specifications

|                           |   |
|---------------------------|---|
| Interface                 | Supported USB 1.1 Spec.   |
| Memory Capacity (MB)      | 16/32/64/128/256/512/1024   |
| Duration for keeping data | Up to the 10years   |
| Reading/Writing speed     | 1MB/sec.(read)<br>920KB/sec.(write)   |
| Indication                | Power on : lighting red LED<br>Stand by : lighting green LED<br>Writing data : blinking green LED |
| Temp. for keeping         | -20 ~ +85   |
| Temp. for operation       | 0 ~ +45   |
| Weight                    | 10grams approximately   |
| Operating Systems         | Windows 98SE, ME, 2000, XP<br>Linux Kernel 2.4.0 over,<br>Mac 9.0 over                            |
| Authentication            | FCC, CE, MIC  |

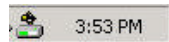
## How to Use

- The Flash Memory Bar can use the default driver with most of the OS, however, in case of Windows 98, you have to install the driver bundled CD with the product or can download the driver from [www.usbfm.com](http://www.usbfm.com).
- When you plug the device into the USB port of your computer, you will see a "Removable Disk" icon in the file manager window.
- Normally you can use the device as like Floppy disk or hard disk for the way of hardware formatting.

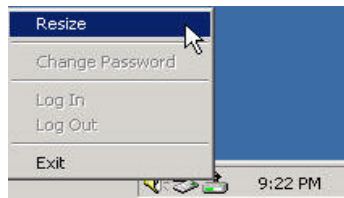
## Login the Security Data Zone

The defaults partition type is " Single Public Area".  
In order to use the Security Mode, please click of Security file in the bundled CD.

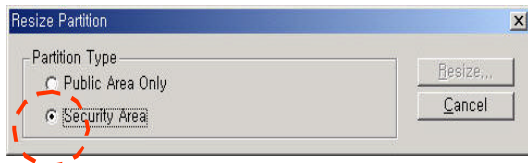
After you installed the software correctly, the Flash Memory Bar icon will appear in the notification area automatically.



1. You can use the right button of your mouse to pop up the selection menus as the following figures.



2. Please select the radio button of Security Area.



3. The following “Security Area Resize” window will be appeared.



4. You can drag the scroll bar in the middle of the window to set the size of the “Security AP Zone” and “ Security Data Zone”.

5. After finished the setting, click the “Resize” button.

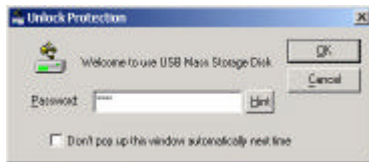
6. The “Confirmation” window will be popped up. Please make sure you already backup the important files or data.

7. Once the resize finished, the “Resize Information” is appeared.

8. Please unplug the device from the USB port and the Plug it into USB port again.

When you finished the process for Security Mode, the device is divided into “Security AP Zone” and “Security Data Zone”. As like “Single Public Area” you can use “Security AP Zone” without any Password. For using “Security Data Zone”, double click the Flash Memory Bar icon in the notification window or select the [Login] of the menu.

9. Key in the password in the “Password(Security Data Zone)” area. the default password is “0000”.



You can create the password hint in the “Unlock Protect” window as well as can change the password.

In order you to see the data in the “Security AP Zone”, you have to [Logout] from the menu in the notification.

## Boot Up Function

1. Set the device to the “Public Area Only”.
2. Copy the “Boot” folder in the CD to the Flash Memory Bar”.
3. You can use this function with computer supports the “Boot Up Function”.

If you have any questions  
while you are using flash memory bar,  
Please contact us by homepage or e-mail.

<http://www.usbfm.com>  
E-mail : [w3master@ilk21.com](mailto:w3master@ilk21.com)

## ● Customer Support

---

#904 Kyonggi Venture Bldg, 1017, Ingye- Dong, Paldal- Gu,  
Suwon - City, Kyonggi - Do, Korea  
Tel : 82-31-304- 1556/7 Fax : 82-31- 304- 1560  
E-mail : [w3master@ilk21.com](mailto:w3master@ilk21.com) Http://[www.usbfm.com](http://www.usbfm.com)

## Precaution

1. Security feature will work for Windows users, and this procedure will erase any data on your Flash Memory Bar.

Please backup your data before performing security mode or when you make the Flash Memory Bar bootable.

2. When you are transferring data, the green LED will flash indication of the Flash Memory Bar is in use and is “busy” writing or reading data.

Because some operating systems use write cache, please be sure the LED is not Flashing or finishing Flashing when you unplug it.

Unplugging the Flash Memory Bar while it is busy, will result in lost data and computer errors.

3. The Red/Green LED of Flash Memory Bar lights up when you plug it into your USB Port.

This tells you that you have properly plugged it in and it is receiving power.

4. For safer remove the device, please follow the safe removal procedure.

- . Please double- click the “Safe removal” icon.
- . The “Unplug or Eject Hardware” window will be appeared.
- . Click the “Stop” button.
- . After that you can unplug the device from the USB port of your computer.

Information to user : PART 15, PARAGRAPH 15.21 AND  
15.105(b)

Changes or modifications not expressly approved by the party  
responsible for compliance could void the user's authority to  
operate the equipment

#### FCC Notice

NOTE : This equipment has been tested and found to comply  
with the limits for a Class B digital device, pursuant to Part 15  
of the FCC Rules. These limits are designed to provide  
reasonable protection against harmful interference in a  
residential installation. This equipment generates, uses and can  
radiate radio frequency energy and, if not installed and used in  
accordance with the instructions, may cause harmful  
interference to radio communications. However, there is no  
guarantee that interference will not occur in a particular  
installation. If this equipment does cause harmful interference  
to radio or television reception, which can be determined by  
turning the equipment off and on, the user is encouraged to try  
to correct the interference by one or more of the following  
measures:

- Reorient or relocate the receiving antenna.
- Increase the separation between the equipment and  
receiver

- Connect the equipment into an outlet on a circuit different  
from that to which the receiver is connected.
- Consult the dealer or an experienced radio/TV technician  
for help.

-----  
-----

This device complies with Part 15 of the FCC Rules. Operation  
is subject to the following two conditions: (1) this device may  
not cause harmful interference, and (2) this device must accept  
any interference received, including interference that may  
cause undesired operation.