

## 2.1033 (C) (11) Equipment Identification Plate

---

NOTES:

Label will be as shown on the equipment with permanent adhesive.

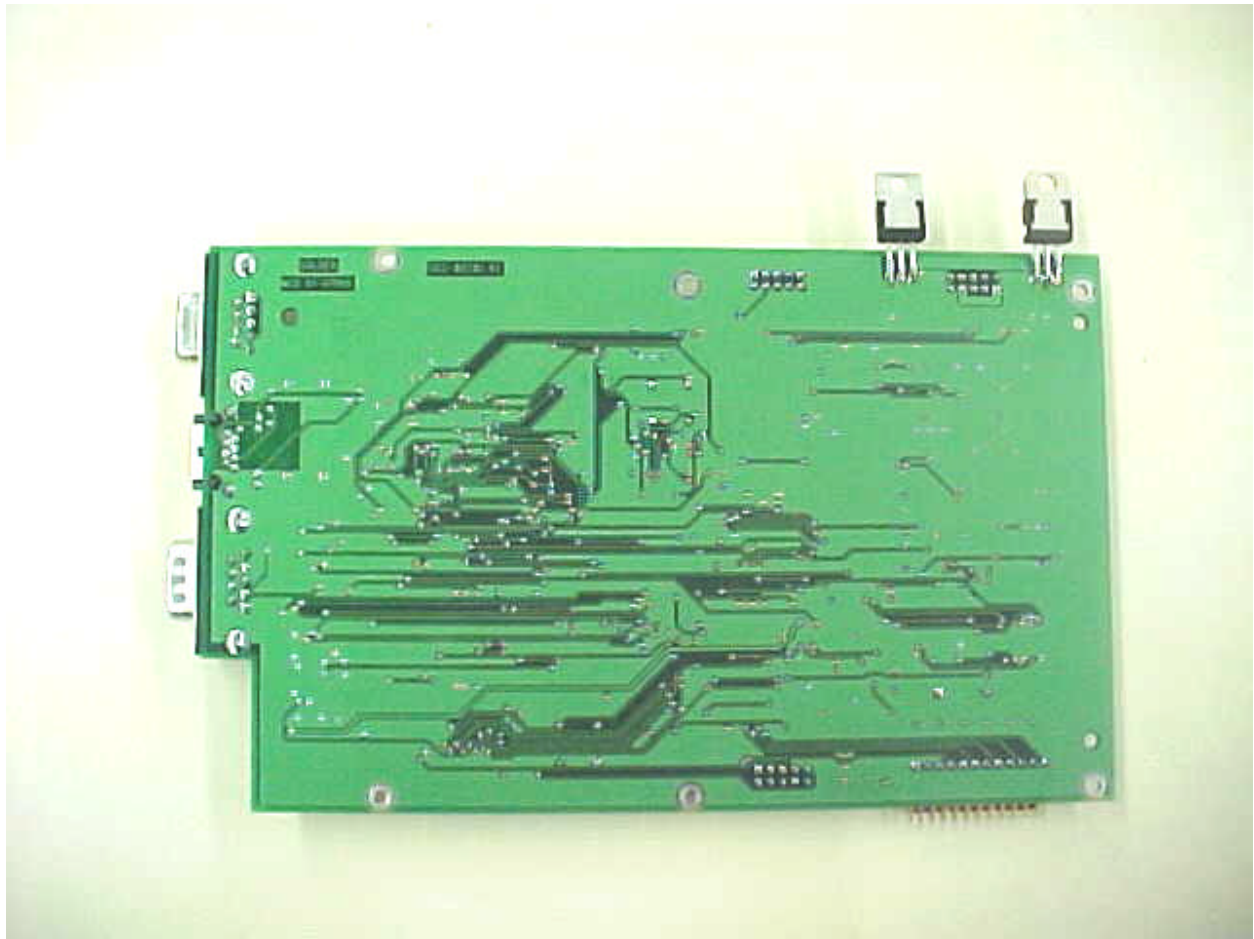
All information on the label will be etched or stamped. Both methods will exceed the expected lifetime of the equipment.

The label will be large enough to allow all information to be legible.

## 2.1033 (C) (12) Equipment Photographs - Internal

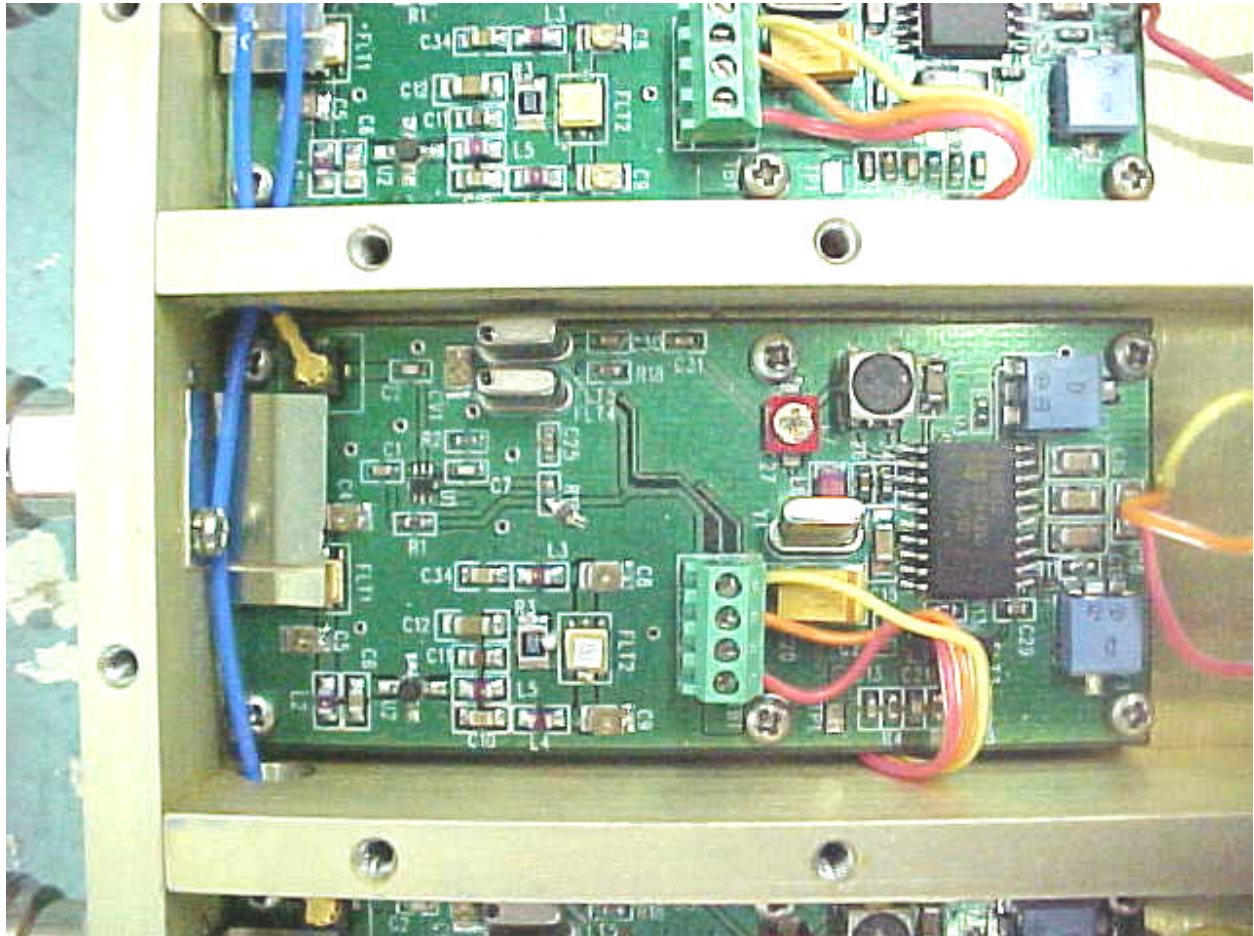
Photo 1      Detail View – Internal – A

---



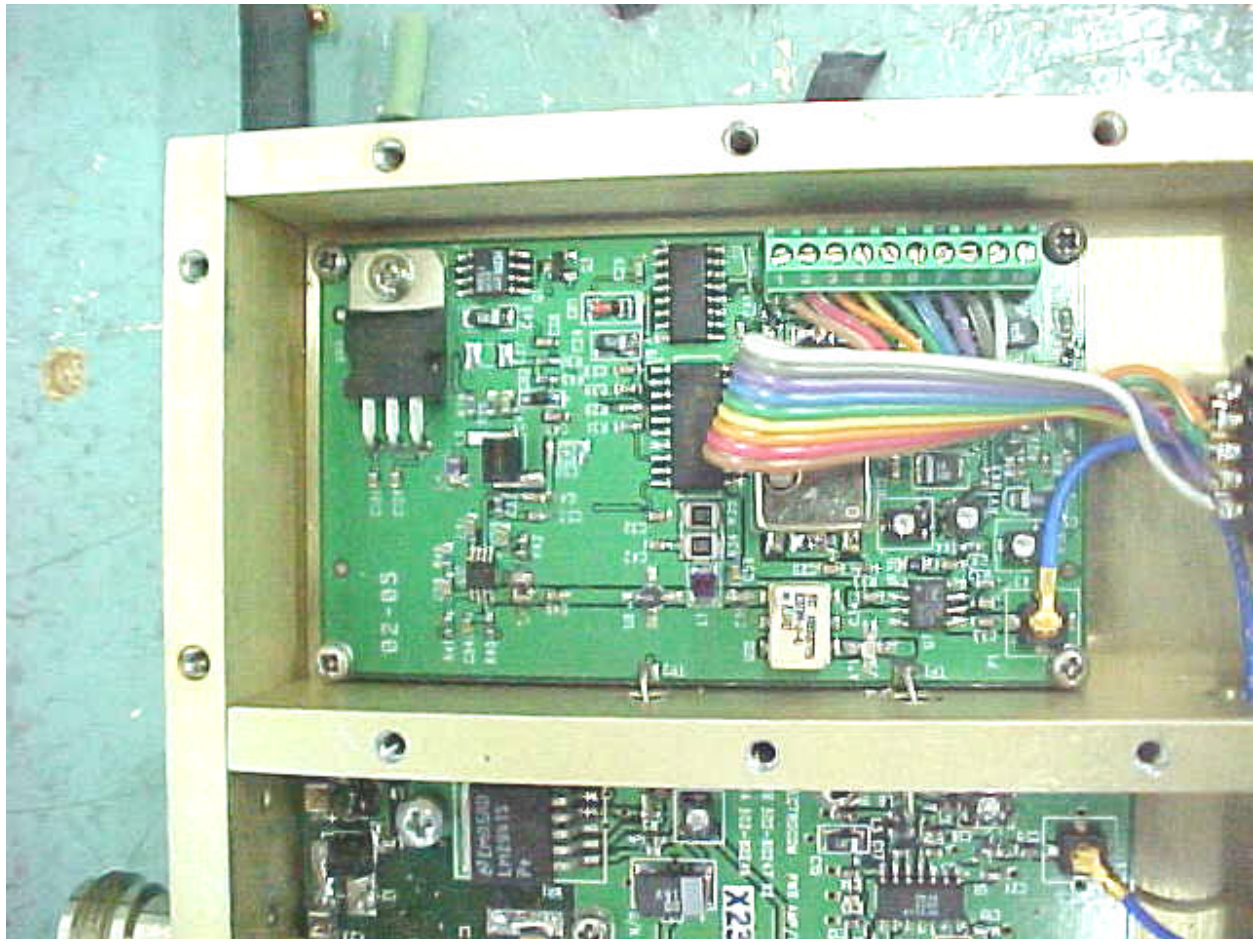
## 2.1033 (C) (12) Equipment Photographs - Internal

Photo 2      Detail View – Internal – B



## 2.1033 (C) (12) Equipment Photographs - Internal

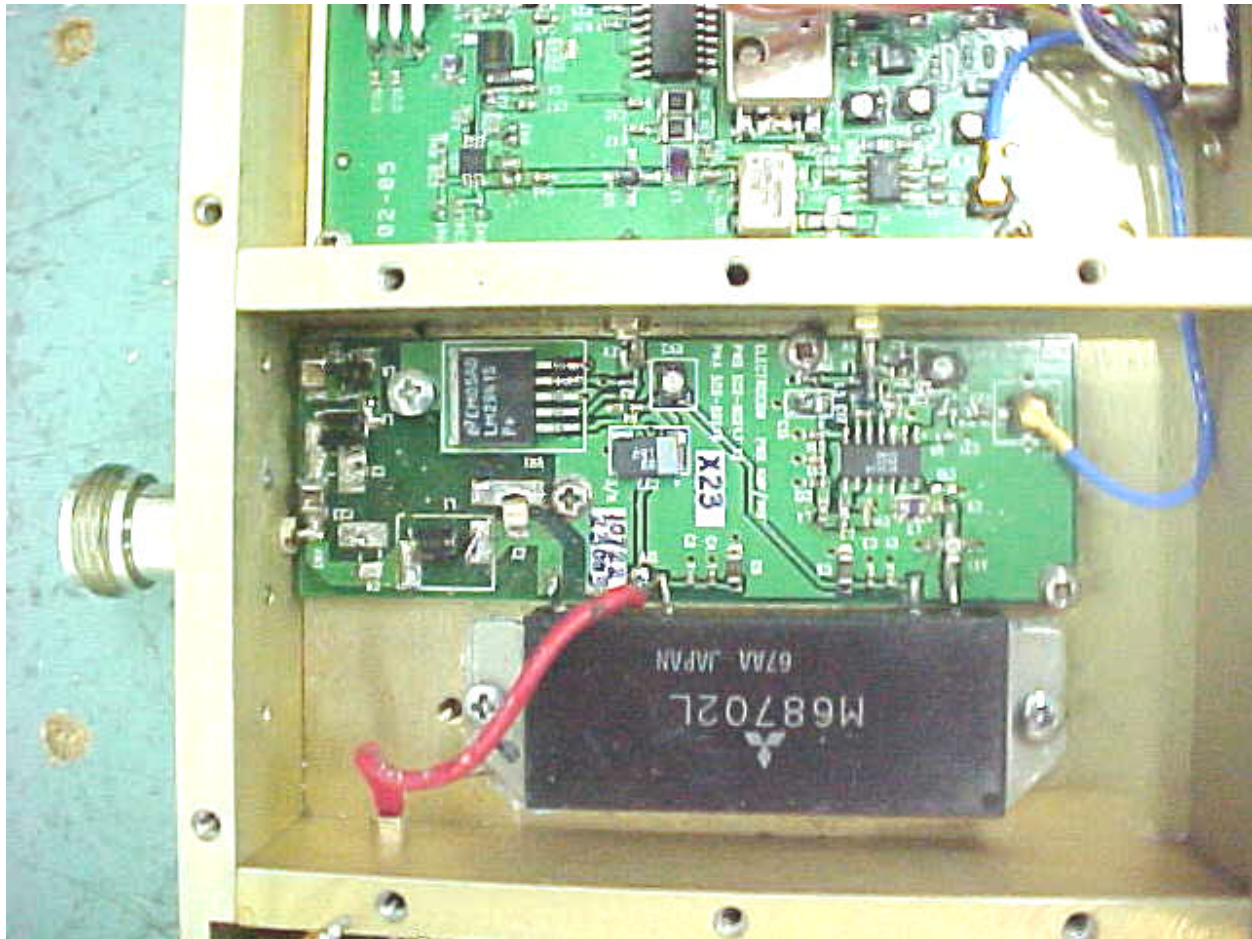
Photo 3 Detail View – Internal – C





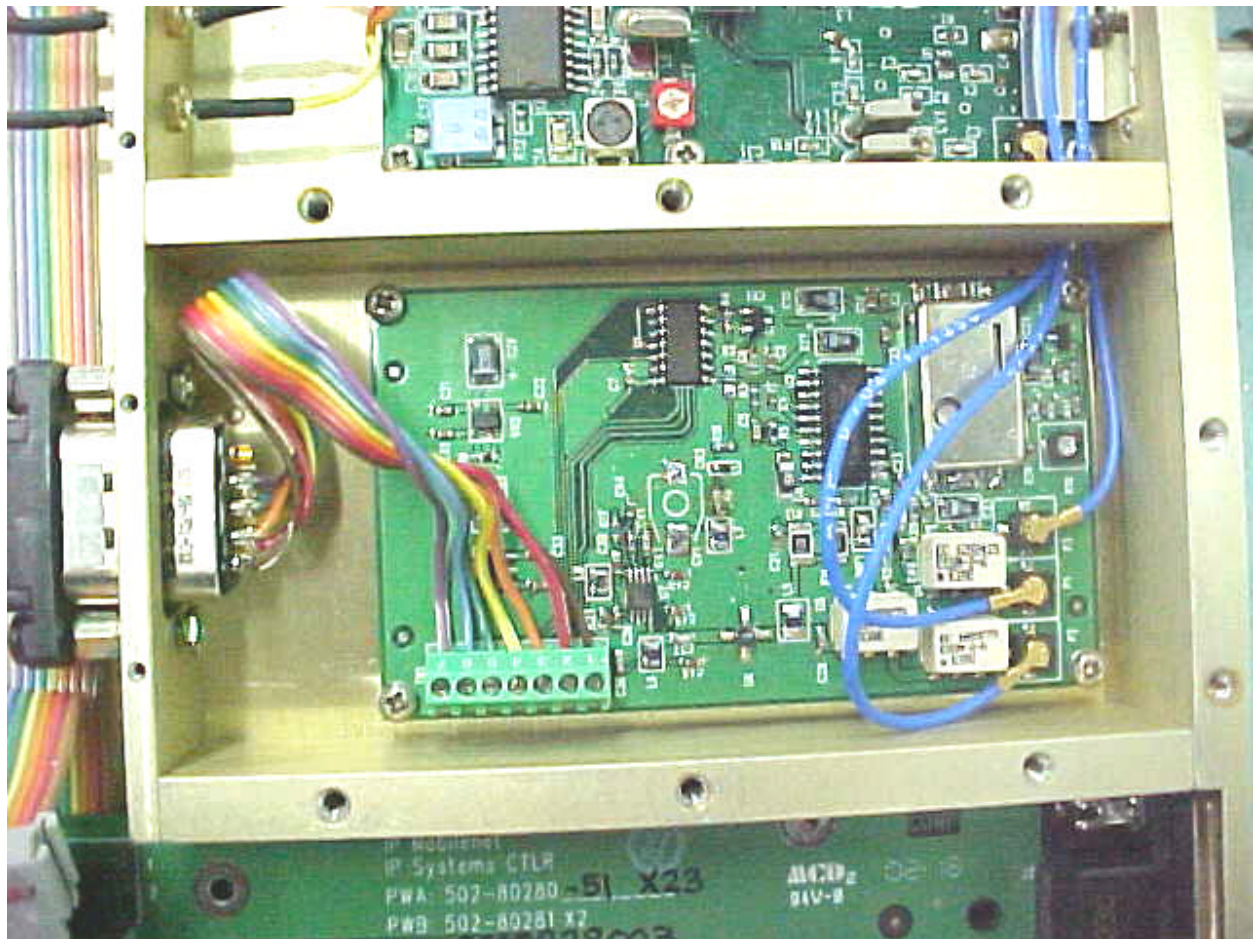
## 2.1033 (C) (12) Equipment Photographs - Internal

Photo 4 Detail View – Internal – D



## 2.1033 (C) (12) Equipment Photographs - Internal

Photo 5 Detail View – Internal – E





## 2.1033 (C) (12) Equipment Photographs - Internal

Photo 6 Detail View – Internal – F

