

• Important safety notice

- Please read below safety instructions carefully before installation and operation: (Keep this manual for future reference or troubleshooting)
1. Please pay attention to all the warnings and hints on this device.
 2. Do not expose this unit to rain, moisture and liquid.
 3. Do not put any stuff into the device.
 4. Do not repair the device or open the enclosure without professional person guidance to avoid electronic shock.
 5. Make sure good ventilation openings to avoid product overheating damage.
 6. Shut off power and make sure environment is safe before installation.
 7. Do not plug-in/out the network cables and IR cables when it is in use to avoid cables damage.
 8. Use DC5V only. Make sure the specification matched if using 3rd party DC adapters.

• Introduction

This transmitter extends HDMI signal wirelessly from source device to display device up to 50meters with the advanced application of HDbiT transport protocol and wireless technology. It requires no cables between sender (TX) and receiver (RX) which makes the installation easy and clean.

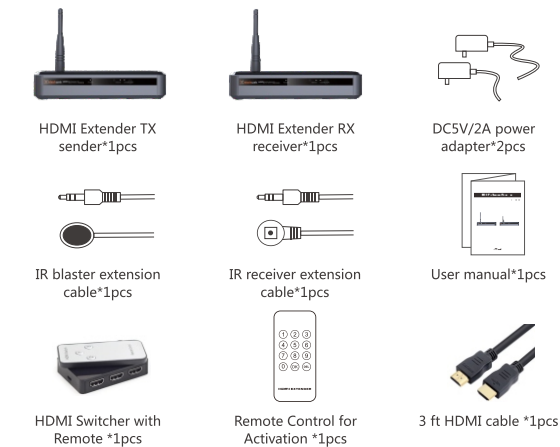
Note:

- 1) Transmission distance will be different due to the environment.
- 2) Wall, brick or glass will shorten the signal cover range or cause big signal loss.

• Features

1. Transmit HDMI signal from source device to display device up to 50meters wirelessly.
2. Support IR remote control function to control source device content from long distance.
3. No cable between sender(TX) and receiver(RX).
4. Easy and clean installation.

• Package contents

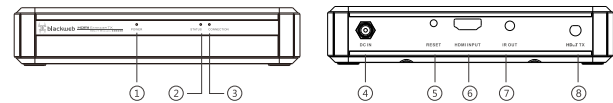


• Installation Requirement

1. HDMI source device (DVD, Gaming Console, Set top box, PC etc)
2. HDMI display device (SDTV, HDTV, or Projector with HDMI port)

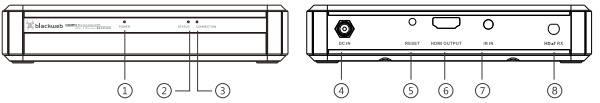
• Panel description

1. HDMI Extender TX sender



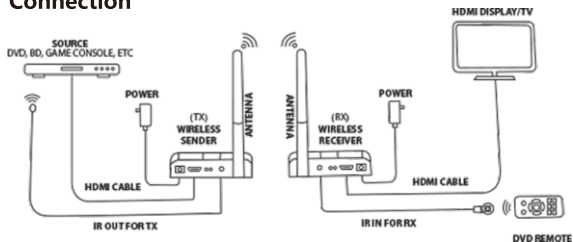
① Power led	It lights when power is on
② Status led	Led blinks slowly when it is building connection. Led blinks fast when it is successfully connected and transmitting data
③ Connection led	It lights when wireless signal is well connected
④ Power input	Connect with DC5V/2A power adapter
⑤ Reset	Press reset button to restart the device
⑥ HDMI input	Connect with HDMI source device
⑦ IR blaster extension cable interface	Connect with IR blaster extension cable. Please put the IR blaster close to source device to best transmit the IR signal from receiver
⑧ Antenna	Launch wireless signal (attach before use)

2. HDMI Extender RX receiver



① Power led	It lights when power is on
② Status led	Led blinks slowly when it is building connection. Led blinks fast when it is successfully connected and transmitting data
③ Connection led	It lights when wireless signal is well connected
④ Power input	Connect with DC5V/2A power adapter
⑤ Reset	Press reset button to restart the device
⑥ HDMI output	Connect with HDMI display device
⑦ IR receiver extension cable interface	Connect with IR receiver extension cable. Please make sure the remote control is within the required range of IR receiver
⑧ Antenna	Receive wireless signal (attach before use)

• Connection



Connection Instructions

1. Attach antenna to (TX) sender unit. Connect source device to (TX) sender via HDMI input. Connect IR blaster extension cable to (TX) sender via IR out.
2. Attach Antenna to (RX) receiver unit. Connect display device to (RX) receiver unit via HDMI output. Connect IR receiver extension cable to (RX) receiver via IR in.
3. Connect power adapters to (TX) sender & (RX) receiver via DC-in.
4. Power on devices to begin transmission.

Note: HDMI Switch (to connect more than one source): Connect up to 3 different HDMI sources.

Connect Switch directly to (TX) sender via HDMI input, then connect 3 sources to Switch (Additional HDMI cables not included).

• FAQ

Q: TV display “waiting for connection” on the bottom right corner?

A: Please check if the power supply of TX (sender) and RX(receiver) is well connected and the power indicator led lights on.

Q: TV display “Please check the TX input signal” ?

- A:**
- 1) Please check if there is an HDMI signal input of sender TX (sender)
 - 2) Try to connect the signal source directly to display device to see if there is signal output from source device or change the signal source, HDMI cables and try again.

Q: Display not fluent and stable?

A: 1) Please move the position of sender (TX) and receiver (RX) and make sure the device is within the required signal range.

2) Click “reset” button on the TX/RX panel, reset and reconnect.

3) Remove other wireless signal disturbance and reduce the obstacles on the way.

• Specification

Items	Specification
HDMI signal	Full compatible with HDCP
Transport protocol	HDBiT
Support resolution	480i@60Hz, 480P@60Hz, 576i@50Hz, 576P@50Hz, 720P@50/60Hz, 1080i720P@50/60Hz, 1080P720P@50/60Hz
IR remote control	Support 20~60Hz wide frequency IR remote device
Transmit distance	Up to 50m for 1080p 60Hz
Working temperature	0°C ~ 60°C
Power supply	DC5V/2A *2PCS
Power consumption	TX: 8.5W; RX: 5.5W
Enclosure material	Plastic
Product dimension	165.7 * 137.7 *34.5mm
Color	Black
Audio Format	R/L stereo audio

Disclaimer

The product name and brand name may be registered trademark of related manufacturers.TM and ® may be omitted on the user manual. The pictures on the user manual are just for reference, and there may be some slight difference with the real products.

We reserve the rights to make changes without further notice to a product or system described herein to improve reliability, function or design.



HDMI Wireless Extender

User manual



BWC17AV001

FCC STATEMENT :

This device complies with Part 15 of the FCC Rules. Operation is subject to the following two conditions:

- (1) This device may not cause harmful interference, and
- (2) This device must accept any interference received, including interference that may cause undesired operation.

Warning: Changes or modifications not expressly approved by the party responsible for compliance could void the user's authority to operate the equipment.

NOTE: This equipment has been tested and found to comply with the limits for a Class B digital device, pursuant to Part 15 of the FCC Rules. These limits are designed to provide reasonable protection against harmful interference in a residential installation. This equipment generates uses and can radiate radio frequency energy and, if not installed and used in accordance with the instructions, may cause harmful interference to radio communications. However, there is no guarantee that interference will not occur in a particular installation. If this equipment does cause harmful interference to radio or television reception, which can be determined by turning the equipment off and on, the user is encouraged to try to correct the interference by one or more of the following measures:

- Reorient or relocate the receiving antenna.

- Increase the separation between the equipment and receiver.

- Connect the equipment into an outlet on a circuit different from that to which the receiver is connected.

- Consult the dealer or an experienced radio/TV technician for help.

FCC Radiation Exposure Statement:

This equipment complies with FCC radiation exposure limits set forth for an uncontrolled environment. This equipment should be installed and operated with minimum distance 20cm between the radiator & your body.