

# MERCURY

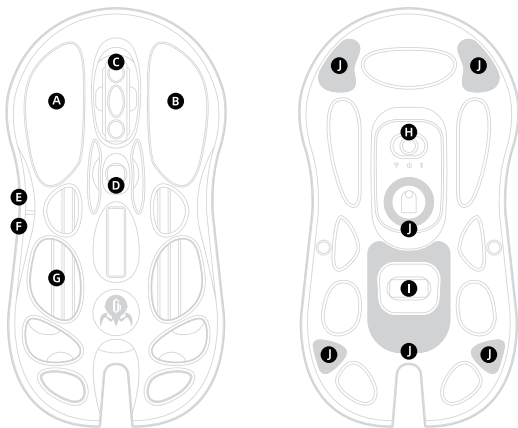
GravaStar Mercury M1 Pro Wireless Gaming Mouse



User Manual



## WHAT'S INSIDE



A: Left mouse button

D: DPI switch

G: Ambient light

J: Teflon foot pad

B: Right mouse button

E: Mouse button

H: Wireless/Power Off/Bluetooth

C: Scroll wheel

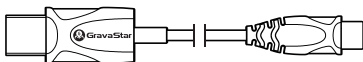
F: Mouse button

I: Wireless USB dongle compartment

### USB Wireless Receiver & A/C Adapter



### 2.1 meters Cable (Charging + Data Transfer)



"The illustrations in the manual are for reference purposes only; the actual product may vary. The data mentioned in the manual is sourced from GravaStar; please refer to the actual usage for accurate information."

Left-click: Single click

Right-click: Single click

Scroll wheel: Single click / Scroll up and down

DPI button: Cycle through sensitivity levels

Mouse button

Mouse button

Ambient light

Front Button Descriptions

Slide to Left: 2.4G Mode

Slide to Right: Bluetooth Mode

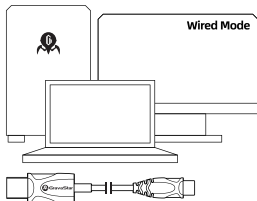
Stay in the middle: Power ON/OFF

Wireless USB dongle compartment

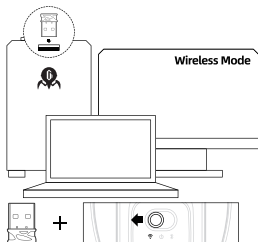
Back Button Descriptions



## GETTING STARTED



Connect the mouse to the computer using the charging cable into any USB port, and you can use the mouse in wired mode.



Connect the USB wireless receiver to the computer. Use the mode switch button and slide it to the left for 2.4G mode.

**2.4G Connection:** Slide the switch on the bottom to the left for wireless mode. Inserting the 1K Receiver into the computer's USB port and you can start to use the mouse. If you want to connect with the 4K Receiver, simultaneously press the left, center, and right buttons for 3 seconds on the Receiver. The blue light will slowly flash once every 1 second for 20 seconds.

**Bluetooth Connection:** Bluetooth Connection: Slide the switch on the bottom to the right for Bluetooth mode. The blue light of Bluetooth will flash twice every second. You can find the device name "Gravastar M1" in your Bluetooth device list.

**Wired Connection:** Connect the mouse with the cable. The Wired mode takes priority over other connections (2.4G/Bluetooth modes will be automatically turned off).

**Low battery warning:** Low battery warning: Battery level is lower than 20%.  
a. Red light flashes twice every second; b. Automatically enters low battery mode and the light turns off.

### Charging Indicator

0% Red color

≤30% Red color  
>30% Green color with a breathing effect

100% battery  
Charging by computer: Ambient light mode  
Charging by power adaptor: Green light stays on

Download the mouse driver online at <https://www.gravastar.com/> to unlock all the features of it. Please note that the device can still function normally without the driver, but for a better experience with additional customization options, it's recommended to use the driver.

## Customize your mouse through the driver

Configuration Function Memory: Save preset configurations for selective switching.

Button Customization: Customize all buttons except the left-click.

DPI Levels/Report Rate Customization: Edit DPI levels and report rates as desired.

Mode Selection: Choose from three performance modes - HP (High Performance), LP (Low Performance), and Corded - suitable for different usage scenarios.

LOD (Lift-Off Distance) Height Selectable: Adjust the lift-off distance height to your preference/  
30-Minute Full-Power Mode: Activate full-power mode for 30 minutes / Ripple Control: Control ripple effects /  
Linear Correction / Built-in smoothing correction algorithm.

Light Customization

## SPECIFICATION

**Product Name :** GravaStar Mercury M1 Pro Wireless Gaming Mouse

**Model :** GravaStar M1

### TECHNICAL SPECIFICATIONS:

LIGHTSPEED wireless technology/LIGHTSYNC RGB lighting/ON-BOARD MEMORY PROFILES

Magnesium alloy shell/Exoskeleton Design/PTFE Feet

**Sensor:** PAW3395DM

**Master Control :** NRF52833

**Resolution:** 26000 DPI

**Max Speed (IPS) :** 650

**Max Acceleration :** 50G

**USB Reprt rate :** 1K~4K Hz (2.4G)

**Bluetooth Version:** V5.3

**Input :** 5V~350mA

**Battery Capacity :** 300mAh

**Charging port :** Type-C

**Net Weight(Mouse Only) :** 85g

**Product Dimension:** 124(L)\*64.5(W)\*39.5(H)mm

**System Compatibility:** Windows/Mac/iOS/Android

\*The above specifications are for reference only, and the manufacturer reserves the right to optimize and modify product specifications without prior notice.



## Warranty



One-year warranty.

Within the warranty period of the product, if any malfunctions are due to the product's own quality, users can contact the retailer with purchase receipt to receive free repair services.

These will not be covered by warranty:

- Damage caused by self-disassembly.
- Malfunctions or damage resulting from water exposure, drops, or deliberate mechanical damage.
- Malfunctions or damage caused by force majeure events.

### FCC Requirement

changes or modifications not expressly approved by the party responsible for compliance could void the user's authority to operate the equipment.

This device complies with Part 15 of the FCC Rules. Operation is subject to the following two conditions:

- (1) this device may not cause harmful interference, and
- (2) this device must accept any interference received, including interference that may cause undesired operation.

Note: This equipment has been tested and found to comply with the limits for a Class B digital device pursuant to Part 15 of the FCC Rules. These limits are designed to provide reasonable protection against harmful interference in a residential installation. This equipment generates, uses, and can radiate radio frequency energy, and if not installed and used in accordance with the instructions, may cause harmful interference to radio communications. However, there is no guarantee that interference will not occur in a particular installation. If this equipment does cause harmful interference to radio or television reception, which can be determined by turning the equipment off and on, the user is encouraged to try to correct the interference by one or more of the following measures:

- Reorient or relocate the receiving antenna.
- Increase the separation between the equipment and receiver.
- Connect the equipment into an outlet on a circuit different from that to which the receiver is connected.
- Consult the dealer or an experienced radio/TV technician for help.



XXX-XXXXXX

CMIIT ID: XXXXXXXXXXXX



XXXXXXXXXXXXXXXXXX



FCC ID: XXXXX-XX

RoHS



# GravaStar Family



## Audio

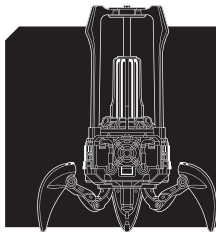


### Mars Pro

Sci-fi Designed Bluetooth Speaker

# G1

Zinc Alloy Shell / Dual 20W Speakers  
Dynamic Light Effects / Handcrafted Collectible-level Painting  
Supports Dual Speaker Networking



### Supernova

Sci-fi Designed Bluetooth Speaker

# G5

Sci-fi Transparent Rocket Capsule / 25W Speakers  
Various RGB Lighting Effects / Biomimetic Tail Spike Handle  
Supports Dual Speaker Networking

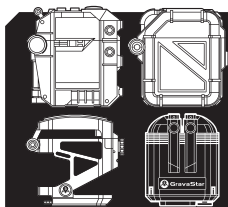


### Sirius Pro

Wireless Earbuds with Knowles  
balanced armatures

# P9

Zinc Alloy / 4+12 Hours of Battery Life  
ENC Call Noise Cancellation / IPX4 Waterproof Rating  
Balanced Armature and Composite Diaphragm + Bluetooth 5.2



### Sirius P5

Pioneering Wireless Earbuds with  
Interchangeable Case

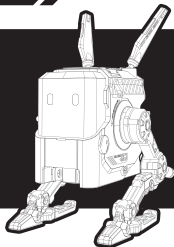
# P5

8H+32H Ultra-long Battery Life / ENC Call Noise Cancellation  
IPX4 Waterproof Rating / High-definition Decoding + Bluetooth 5.2

# GravaStar Family



## Power Adapter

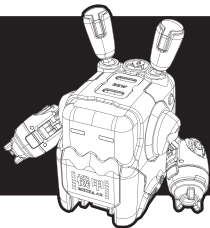


### Alpha65

#### 65W GaN Power Adapter

Adjustable Desktop Companion

65W GaN Triple Ports Fast Charging / Multi-Protocol  
Compatibility / Powerful Intelligent Temperature Control  
Technology / 8-Layer Safety Protection System

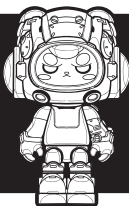


### Delta35

#### 35W GaN Power Adapter

Mecha Design Fast Charger / 35W GaN Dual

Ports for Simultaneous Charging / Compatible with  
Multiple Protocols and Devices



### KIMO & TIFA

#### GravaStar Art Toys

# IP

BE COOL PLAY IT





[www.gravastar.com](http://www.gravastar.com)



**Made in China**