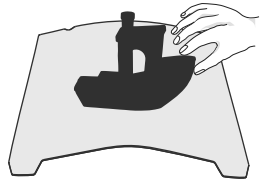
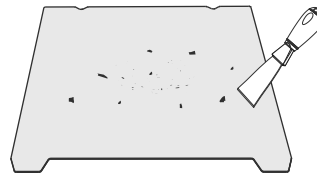


7. Equipment Maintenance

7.1 Platform plate removal and maintenance



- ❶ A. When printing is finished, wait for the platform plate to cool before removing the printing platform with the model attached;
B. Slightly bend the platform with both hands to separate the model from the platform.



- ❷ If there are residual filaments on the platform plate, scrape them off lightly with a blade and print again.



For more detailed maintenance and repair instructions, please visit
<https://wiki.creality.com/zh/cr-series/creality-hi>



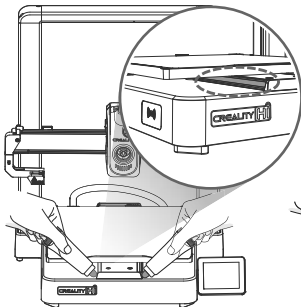
Creality WIKI



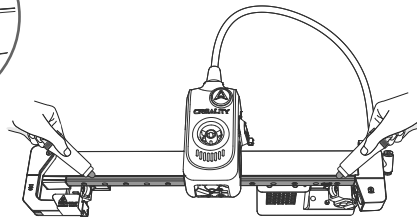
1. Don't bend too much for daily use to prevent deformation and unusability;
2. The printing platform is a perishable part, and it is recommended to replace it regularly to ensure that the first layer of the model sticks properly.

7.2 Optic Axis Maintenance

It is recommended to purchase lubricating grease for periodic lubrication maintenance of the optic axis and guide rail areas.



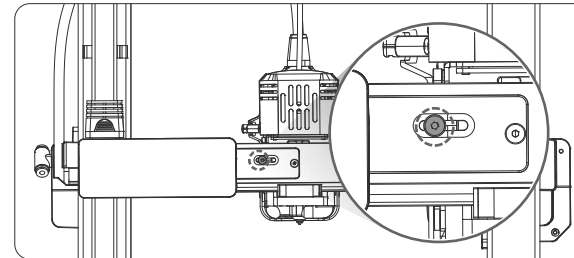
Y-axis optic axis area



X-axis optic axis area

7.3 X-axis Belt Tension Adjustment

If the cutter fails to cut through the filament, adjust the X-axis belt tension; Loosen the screws as shown in the diagram to automatically release the belt tension, then tighten the screws.



8. Specifications

Specifications	
Scanning model	Crealty Hi
Modeling technology	FFF
Modeling dimensions	260*260*300mm
Leveling method	Auto Leveling
Number of extruder	1
Extruder diameter	0.4mm
Slice thickness	0.1-0.35mm
Nozzle temperature	≤300°C
Hotbed temperature	≤100°C
Filament type	Hyper-PLA/PLA/TPU/PETG/ABS/PLA-CF
Rated power	1000W
Rated voltage	100-240V~, 50/60Hz
Filament detection	Yes
Power loss recovery	Yes
Working mode	USB flash drive printing/LAN printing/Cloud printing
Print file format	Gcode
Slicing software	Crealty Print
Operating system	Windows/MAC OS
Language	中文/ English/ Español/ Deutsche/ Français/ Русский/ Português/ Italiano/ Türk/ 日本語/ 한국어

FCC WARNING

This device complies with part 15 of the FCC Rules. Operation is subject to the following two conditions:

(1) this device may not cause harmful interference, and (2) this device must accept any interference received, including interference that may cause undesired operation.

Any changes or modifications not expressly approved by the party responsible for compliance could void the user's authority to operate the equipment.

NOTE: This equipment has been tested and found to comply with the limits for a Class B digital device, pursuant to Part 15 of the FCC Rules. These limits are designed to provide reasonable protection against harmful interference in a residential installation. This equipment generates, uses and can radiate radio frequency energy and, if not installed and used in accordance with the instructions, may cause harmful interference to radio communications.

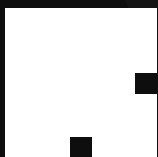
However, there is no guarantee that interference will not occur in a particular installation.

If this equipment does cause harmful interference to radio or television reception, which can be determined by turning the equipment off and on, the user is encouraged to try to correct the interference by one or more of the following measures:

- Reorient or relocate the receiving antenna.
- Increase the separation between the equipment and receiver.
- Connect the equipment into an outlet on a circuit different from that to which the receiver is connected.
- Consult the dealer or an experienced radio/TV technician for help.

To maintain compliance with FCC's RF Exposure guidelines, This equipment should be installed and operated with minimum distance between 20cm the radiator your body: Use only the supplied antenna.

Due to the differences between different machine models, the actual objects and the images can differ. Please refer to the actual machine. The final explanation rights shall be reserved by Shenzhen Crealty 3D Technology Co., Ltd.



SHENZHEN CREALITY 3D TECHNOLOGY CO., LTD.

18th Floor, JinXiuHongDu Building, Meilong Road, Xinniu Community,
Minzhi Street, Longhua District, Shenzhen City, China.

Official Website: www.crealty.com

Tel: +86 755-8523 4565

E-mail: cs@creality.com

