

Robot Wi-Fi Antenna specifications

Model: 821-001-01A01

Antenna Type: FPC Antenna

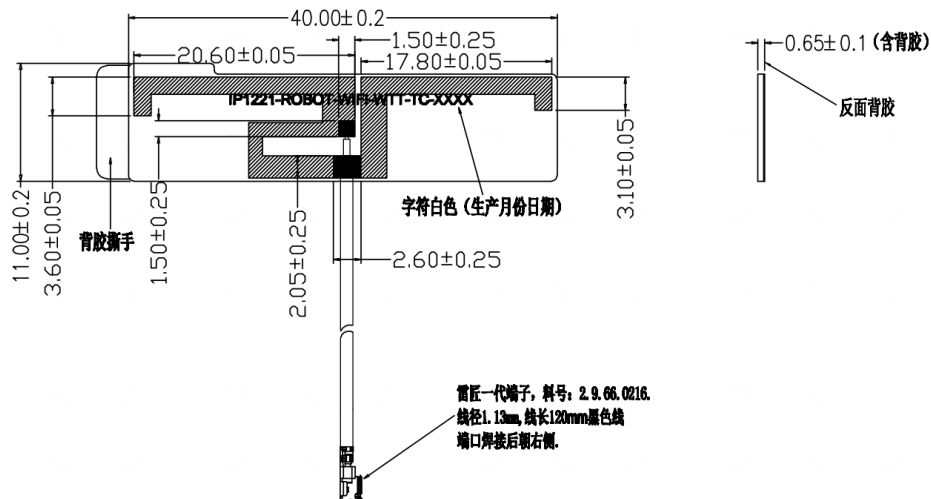
Manufacturer: Welletronics Communication Technology Co., LTD.

Address: 1st, 2nd, and 3rd floors, No. 8 Tongfu Estate Industrial Zone, Xinshi Community, Dalang Street, Longhua District, Shenzhen

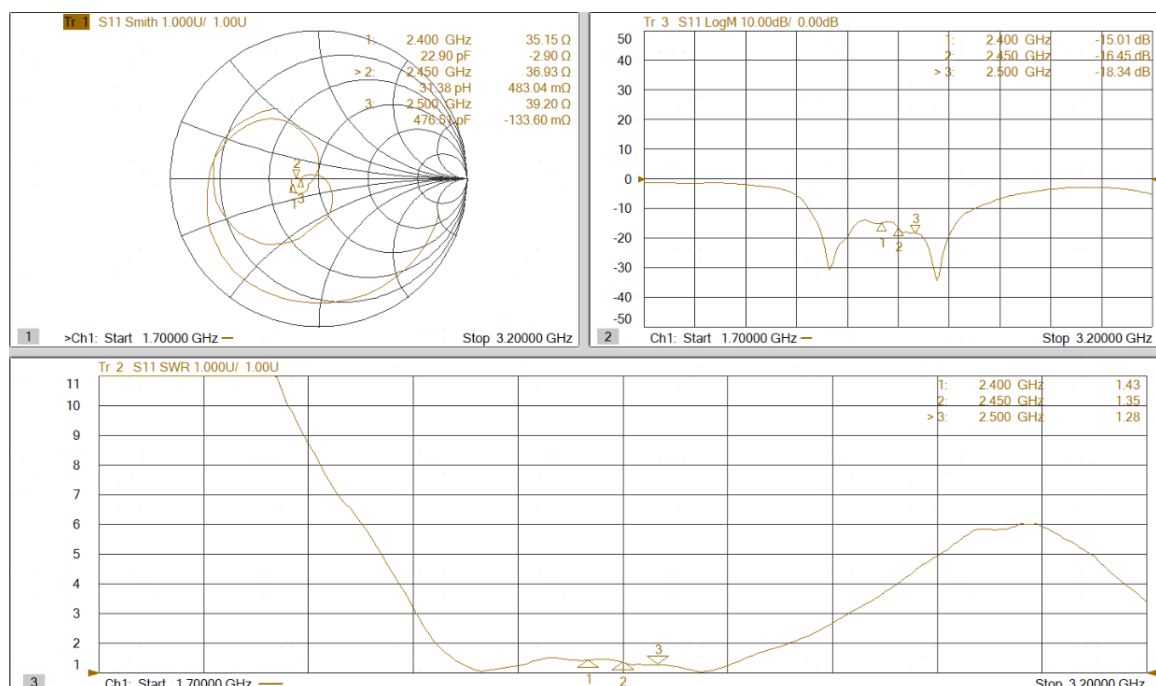
1. ELECTRICAL CHARACTERISTICS

Frequency Range	2400MHz to 2500MHz
Bandwidth	100MHz
Peak Gain	1dBi
Return Loss	> 10 dB
Impedance	50Ω
Polarization	Linear

2. DRAWING



3. RETURN LOSS



4. RADIATION PATTERNS

